

MIT Open Access Articles

Transfer of a Catabolic Pathway for Chloromethane in Methylobacterium Strains Highlights Different Limitations for Growth with Chloromethane or with Dichloromethane

The MIT Faculty has made this article openly available. **Please share** how this access benefits you. Your story matters.

Citation: Michener, Joshua K. et al. "Transfer of a Catabolic Pathway for Chloromethane in Methylobacterium Strains Highlights Different Limitations for Growth with Chloromethane or with Dichloromethane." *Frontiers in Microbiology* 7 (2016): n. pag.

As Published: <http://dx.doi.org/10.3389/fmicb.2016.01116>

Publisher: Frontiers Research Foundation

Persistent URL: <http://hdl.handle.net/1721.1/106273>

Version: Final published version: final published article, as it appeared in a journal, conference proceedings, or other formally published context

Terms of use: Creative Commons Attribution 4.0 International License





Transfer of a Catabolic Pathway for Chloromethane in *Methylobacterium* Strains Highlights Different Limitations for Growth with Chloromethane or with Dichloromethane

Joshua K. Michener^{1,2,3*}, Stéphane Vuilleumier⁴, Françoise Bringel⁴ and Christopher J. Marx^{2,5,6,7}

¹ Department of Biological Engineering, Massachusetts Institute of Technology, Cambridge, MA, USA, ² Department of Organismic and Evolutionary Biology, Harvard University, Cambridge, MA, USA, ³ Biosciences Division, Oak Ridge National Laboratory, Oak Ridge, TN, USA, ⁴ UMR 7156 UNISTRA – CNRS, Université de Strasbourg, Strasbourg, France,

⁵ Department of Biological Sciences, University of Idaho, Moscow, ID, USA, ⁶ Institute for Bioinformatics and Evolutionary Studies, University of Idaho, Moscow, ID, USA, ⁷ Center for Modeling Complex Interactions, University of Idaho, Moscow, ID, USA

OPEN ACCESS

Edited by:

Rekha Seshadri,
Department of Energy Joint Genome
Institute, USA

Reviewed by:

Soo Rin Kim,
Kyungpook National University,
South Korea
Jonathan Badger,
National Cancer Institute, USA

*Correspondence:

Joshua K. Michener
michenerjk@ornl.gov

Specialty section:

This article was submitted to
Evolutionary and Genomic
Microbiology,
a section of the journal
Frontiers in Microbiology

Received: 09 March 2016

Accepted: 04 July 2016

Published: 19 July 2016

Citation:

Michener JK, Vuilleumier S, Bringel F
and Marx CJ (2016) Transfer of a
Catabolic Pathway for Chloromethane
in *Methylobacterium* Strains
Highlights Different Limitations
for Growth with Chloromethane or
with Dichloromethane.
Front. Microbiol. 7:1116.
doi: 10.3389/fmicb.2016.01116

Chloromethane (CM) is an ozone-depleting gas, produced predominantly from natural sources, that provides an important carbon source for microbes capable of consuming it. CM catabolism has been difficult to study owing to the challenging genetics of its native microbial hosts. Since the pathways for CM catabolism show evidence of horizontal gene transfer, we reproduced this transfer process in the laboratory to generate new CM-catabolizing strains in tractable hosts. We demonstrate that six putative accessory genes improve CM catabolism, though heterologous expression of only one of the six is strictly necessary for growth on CM. In contrast to growth of *Methylobacterium* strains with the closely related compound dichloromethane (DCM), we find that chloride export does not limit growth on CM and, in general that the ability of a strain to grow on DCM is uncorrelated with its ability to grow on CM. This heterologous expression system allows us to investigate the components required for effective CM catabolism and the factors that limit effective catabolism after horizontal transfer.

Keywords: horizontal gene transfer (HGT), bioremediation, chloromethane, *Methylobacterium extorquens*, microbial evolution

INTRODUCTION

Chloromethane (CM) is the most abundant organohalide on earth, accounting for roughly 16% of tropospheric chlorine in 2012, and therefore contributes to chloride-catalyzed ozone depletion (World Meteorological Organization, 2014). Sources of CM are mainly natural, such as biomass burning and tropical plants (Yokouchi et al., 2000; Keppler et al., 2005). An abundant electron-rich compound represents a valuable carbon source for a microbe and, as expected, multiple microbial strains have been isolated based on their ability to grow with CM as the sole source of carbon and

energy (Hartmans et al., 1986; Doronina et al., 1996; McAnulla et al., 2001; Woodall et al., 2001; Schäfer et al., 2005; Warner et al., 2005; Nadalig et al., 2011; Nadalig et al., 2014). These microbes are estimated to consume approximately one third of the CM produced each year and therefore represent an ecologically significant sink for CM (Keppler et al., 2005).

The model CM-degrading bacterium is *Methylobacterium extorquens* CM4 (hereafter 'CM4'), an aerobic methylotrophic alpha-proteobacterium (Doronina et al., 1996). Genes necessary for growth on CM have been identified based on insertion mutants of strain CM4 with CM growth defects. In CM4, CM dehalogenation is catalyzed by a pair of proteins, CmuA and CmuB, that transfer the methyl group first to a B₁₂ cofactor on CmuA and then to tetrahydrofolate (H₄F), with concomitant loss of HCl (**Figure 1A**) (Vannelli et al., 1999; Studer et al., 2001). In order to grow with CM as the sole source of carbon and energy, the cell must assimilate a portion of this methyl-H₄F via methylene-H₄F and use the rest to generate reducing equivalents. Methylene-H₄F is also formed during conventional methylotrophic growth, wherein *M. extorquens* oxidizes methanol to formate in a tetrahydromethanopterin (H₄MPT)-dependent pathway (Chistoserdova et al., 1998; Marx et al., 2003). The formate is then further oxidized to CO₂ or reduced in a H₄F-dependent pathway for carbon assimilation (Marx et al., 2003, 2005; Crowther et al., 2008). Since CM methyl groups enter metabolism as reduced methyl-H₄F, carbon can be assimilated using the same pathways as during growth with methanol. However, the generation of reducing equivalents during growth with CM requires the oxidation of methyl-H₄F to formate, reversing the flux in this pathway compared to growth with methanol (**Figure 1A**). Three additional enzymes not found in other strains of *M. extorquens*, MetF2, FolD, and PurU, are thought to convert methyl-H₄F into formate (Studer et al., 2002). However, despite repeated attempts by different researchers in separate laboratories using unique constructs, we have been unable to make targeted mutations in CM4. This limitation has made it difficult to directly test the roles of these accessory genes. The available evidence indicates that *metF2* and *purU* are involved in converting methyl-H₄F into formate, but the role of *folD* is indeterminate (Vannelli et al., 1998, 1999; Studer et al., 2002).

In addition to CM4, a relatively small and phylogenetically diverse subset of methylotrophs has been found to grow on CM. The genomes of two CM utilizing strains, CM4 and *Hyphomicrobium* sp. MC1 (hereafter 'MC1'), have been sequenced (Vuilleumier et al., 2011; Marx et al., 2012). In CM4, the CM utilization genes (the *cmu* pathway) are distributed around a large plasmid that also contains genes for cobalamin and folate metabolism. In MC1, the *cmu* genes form a putative operon. The other CM-utilizing strains contain *cmu* pathways with highly homologous enzymes, and their distribution and genetic organization strongly suggest that the pathway has been transferred by horizontal gene transfer (HGT; Nadalig et al., 2014). Horizontal transfer of a complex metabolic pathway can be challenging for the recipient strain, since the transferred pathway must function effectively in its new host, and the host must be able to accommodate the stresses imposed by the new pathway.

We have previously analyzed the factors that limit the effectiveness of a horizontally transferred pathway for catabolism of dichloromethane (DCM), an industrial solvent that differs from CM by only a single chlorine (Michener et al., 2014a). It is unclear how general those factors would be, even for a closely related compound such as CM, since the pathways for catabolism of CM and DCM have different enzymology and metabolic consequences (**Figure 1A**). Catabolism of DCM requires a dedicated cytoplasmic dehalogenase (DcmA) that directly dechlorinates DCM to formaldehyde (La Roche and Leisinger, 1990). As with CM, growth on DCM produces cytoplasmic hydrochloric acid, though twice as much per C₁ unit. However, DCM is metabolized similarly to the formaldehyde produced during growth on methanol, without requiring the metabolic rerouting necessary for growth on CM (**Figure 1A**). In the case of DCM, expressing DcmA in a variety of other *Methylobacterium* strains initially led to little or no growth (Kayser et al., 2002; Michener et al., 2014b). Effective use of the DCM catabolic pathway required mutations to the host genome that increased chloride efflux (Michener et al., 2014a). Given the similarities and differences between CM and DCM, we wished to understand whether the DCM-utilizing DM4 strain would be preadapted to use CM and, more generally, whether there would be a correlation between the relative ability of a strain to grow with these closely related compounds when provided with the corresponding dehalogenase.

In this work, we have deliberately transferred the CM catabolic pathway into naïve *Methylobacterium* strains, generating new CM-utilizing microbes. We demonstrate that these strains grow poorly on CM, indicating the need for post-transfer refinement. We find no correlation between a strain's ability to grow with CM and DCM when provided with the corresponding heterologous catabolic pathway. Our heterologous expression system allows facile manipulation, allowing us to measure the fitness effect of accessory genes such as *purU* and *folD*. Finally, we show that growth on CM is not limited by chloride export, in contrast to growth on DCM.

RESULTS

Transfer of a *cmu* Cluster from *Hyphomicrobium* sp. MC1, But Not from *M. extorquens* CM4, Enables Diverse *Methylobacterium* Strains to Grow on CM

To reproduce the process of HGT, we cloned the gene clusters implicated in CM catabolism into conjugative plasmids and transferred them into naïve recipient strains (**Figure 1B**). The *cmu* cluster from *Hyphomicrobium* sp. MC1 (Vuilleumier et al., 2011) was cloned as a single insert, yielding pJM105. The *cmu* genes in *M. extorquens* CM4 are dispersed around a large 380 kb plasmid (Marx et al., 2012). Accordingly, we amplified two separate regions of this plasmid, comprising *cmuA/folD/purU* and *metF2/cmuB/cmuC*, and combined them into a single insert to construct plasmid pJM50 (**Figure 1B**).

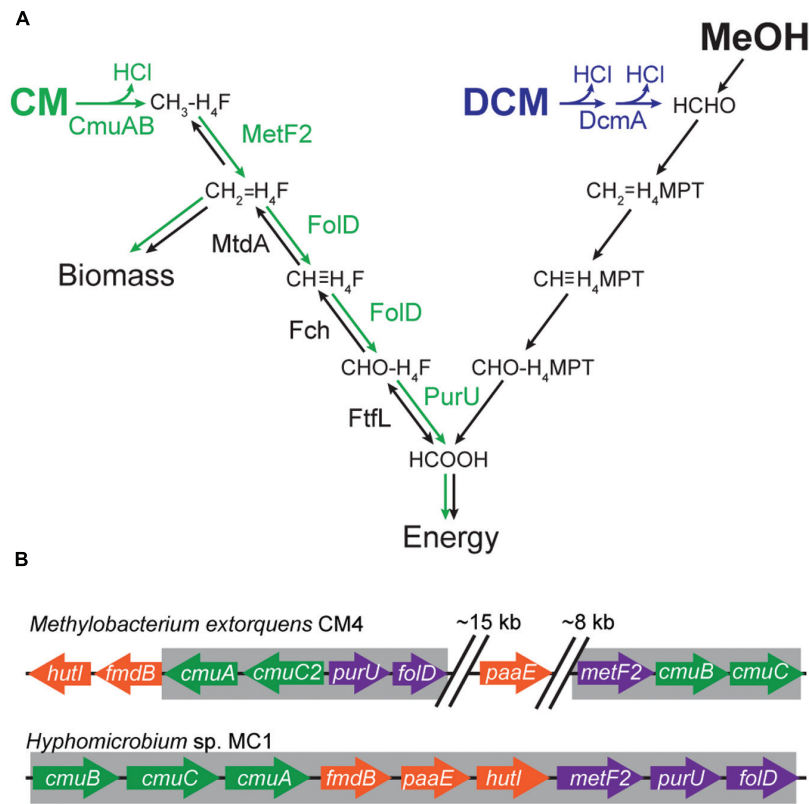


FIGURE 1 | Genes and enzymes required for growth on C₁ compounds. (A) Growth with CM requires a reversal of the flux through the assimilatory tetrahydrofolate (H₄F) pathway. During growth with methanol (MeOH) or DCM, carbon enters C₁ metabolism as formaldehyde (HCHO) and is oxidized to formate (HCOOH) in a tetrahydromethanopterin (H₄MPT)-dependent pathway. Formate is then further oxidized to CO₂ or reduced in a H₄F-dependent pathway. During growth with CM, carbon enters as methyl-H₄F and is oxidized to formate to yield energy. Reversing flux through the assimilatory H₄F pathway requires three additional enzyme activities (green arrows). **(B)** The *cmu* clusters of *Hyphomicrobium* sp. MC1 is more compact than the corresponding cluster of *M. extorquens* CM4. The regions highlighted in gray were amplified by PCR; cloned into expression plasmids pJM50 and pJM105, respectively; and conjugated into recipient *Methylobacterium* strains.

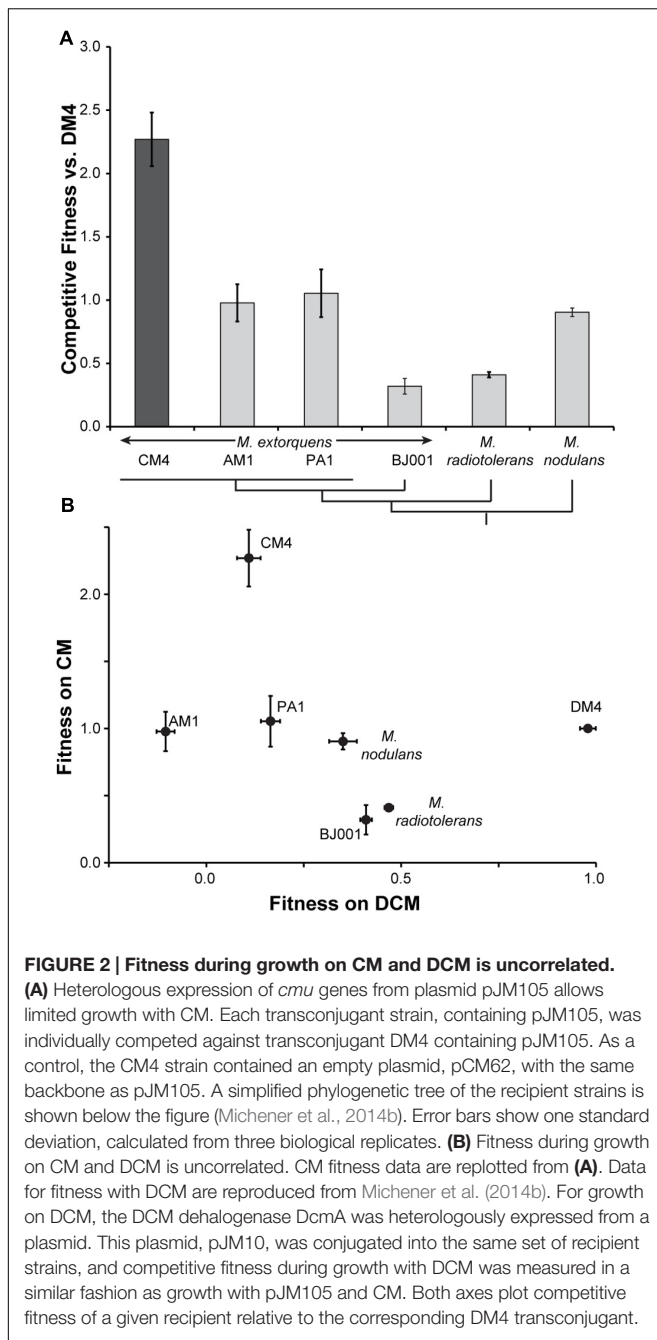
Each of these plasmids was separately introduced into six different recipient strains unable to grow on CM: *M. extorquens* strains AM1 (Peel and Quayle, 1961), PA1 (Knief et al., 2010), DM4 (Gälli and Leisinger, 1985), and BJ001 (Van Aken et al., 2004), as well as *Methylobacterium nodulans* (Sy et al., 2001) and *Methylobacterium radiotolerans* (Sanders and Maxcy, 1979) (Supplementary Table S2). Each of the transconjugants was tested for growth in minimal medium containing CM as the sole source of carbon and energy. After three days of growth, all six of the pJM105 transconjugants containing the *Hyphomicrobium* sp. MC1 *cmu* cluster showed small, but consistent, levels of growth (0.02 < OD₆₀₀ < 0.06), while none of the pJM50 transconjugants reached a comparable optical density. Under these conditions, strain CM4 typically reaches an optical density of ~0.1. Control flasks, containing cells but no CM, did not exceed an OD₆₀₀ of 0.01.

Poor growth of the pJM105 transconjugants made it difficult to accurately quantify growth rates and yields, so instead we characterized their growth based on competitive fitness. Each of the transconjugants, as well as *M. extorquens* CM4 as a positive control, was mixed with the transconjugant of DM4

and grown with CM as the sole source of carbon and energy. We measured the population sizes and population ratios before and after growth, and then calculated the competitive fitness relative to DM4 (Figure 2A). As expected, the fitness of the native CM-consuming strain CM4 was significantly higher than any of the transconjugants (*p* < 0.01 for all transconjugants, two-tailed *t*-test). However, each of the transconjugants had non-zero fitness, indicating that they grew with CM as the sole source of carbon and energy. For comparison, we also competed AM1, PA1, and DM4 against CM4 directly. These competitions confirmed that the transconjugant strains grow with CM, but at 23-44% of the fitness of CM4 (Supplementary Figure S1).

Effectiveness of CM Catabolism Does Not Correlate with DCM Use across *Methylobacterium* Strains

We previously measured the fitness of this same set of recipient strains during growth on DCM after introduction of a heterologous DCM catabolic pathway (Michener et al., 2014b). Comparing the fitness of the strains on CM and DCM, we find



no correlation between an individual's fitness on CM and DCM (linear regression, $p = 0.49$, **Figure 2B**).

Deletions in the *cmu* Gene Cassette Allow Identification of Genes Essential for Growth with CM in *M. extorquens* AM1

Each of the six accessory genes in the *cmu* gene cassette, *metF2*, *purU*, *folD*, *paaE*, *hutI*, and *fmdB* was individually deleted from pJM105, and the modified plasmids were introduced into AM1.

We determined the fitness effect of each single-gene deletion by competing strains containing the modified plasmids against a strain containing the original plasmid during growth with CM (**Figure 3**). Only one gene, *metF2* encoding a methylene H_4F reductase (**Figure 1**), was essential for growth on CM, while the other deletions imposed fitness costs of 18–47%.

Chloride Transport Does Not Limit Growth with CM

We previously showed that growth of transconjugant *Methylobacterium* strains with DCM was limited by the need to export the chloride ions produced as a byproduct of dechlorination (Michener et al., 2014a). Mutations that increased chloride efflux, such as overexpression of the ClcA chloride:proton antiporter, significantly increased fitness during growth on DCM (**Figure 4B**). Accordingly, we tested whether ClcA overexpression would increase the fitness of a *Methylobacterium* strain during growth with CM. We introduced the pJM105 plasmid into mutant strains of AM1 and PA1 that each overexpress ClcA. In both cases, the fitness of the ClcA overexpression strain was indistinguishable from an otherwise isogenic control (**Figure 4**).

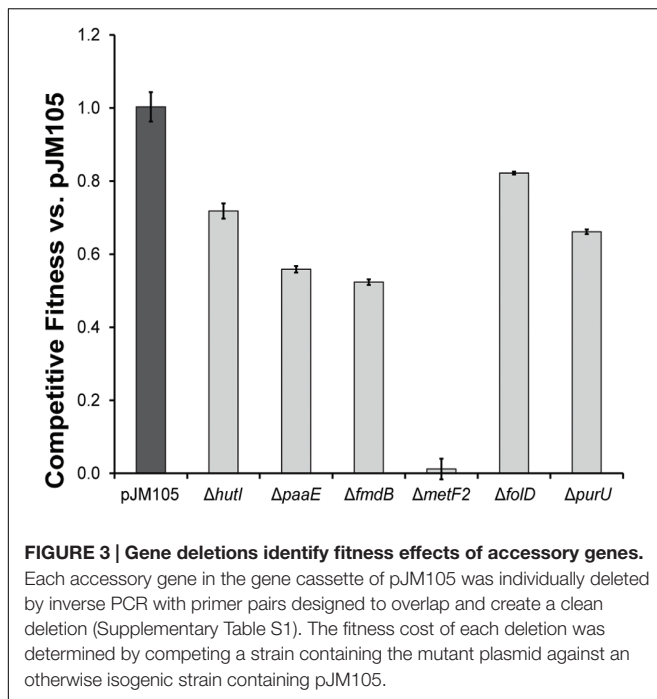
DISCUSSION

Heterologous CM Use Does Not Correlate with DCM Use across *Methylobacterium* Strains

As with growth on DCM, the ability to exploit this horizontally transferred pathway is common and all of the recipients were able to grow on CM. Consistent with our previous results, the phylogenetic relationships between recipients was not predictive of their fitness, though we might expect less of a phylogenetic effect since the heterologous pathway was transferred from outside the genus. Additionally, transfer of the pathway allowed only limited growth, ranging from 14 to 46% of the fitness of a natural isolate (**Figure 2A**). Despite these general similarities, the lack of correlation between fitness on CM and DCM suggests that the fitness-limiting factors are different for the catabolic pathways of these two chlorinated methanes. We assume in our interpretation of the competition experiments that the strains compete solely through consumption of the carbon source. Any other competitive interactions would likely have similar effects during growth both with CM and with DCM.

Gene Deletions Demonstrate That *metF2*, But Not *purU* or *folD*, Is Essential for Growth with CM in *M. extorquens* AM1

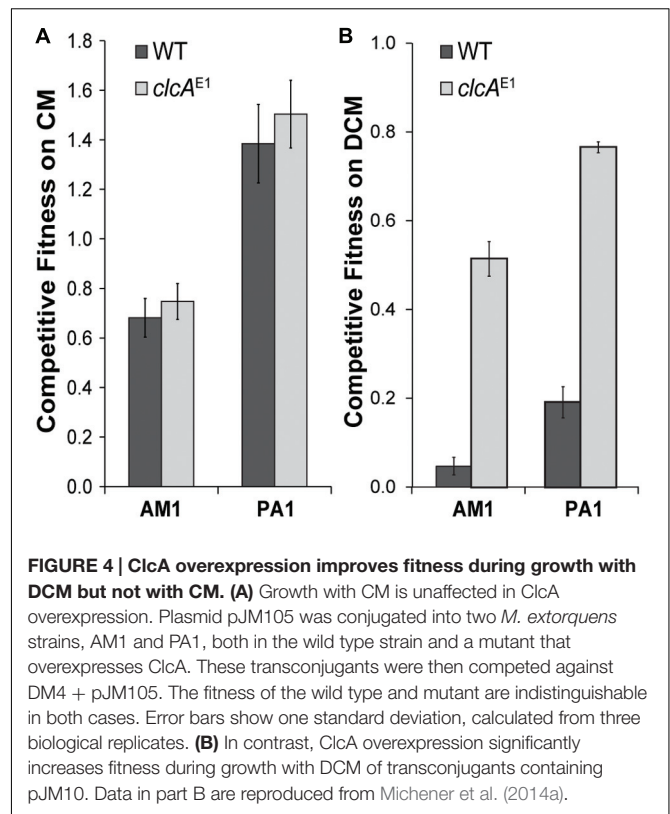
The MetF2 enzyme was essential for growth of AM1 with CM, as had previously been shown for CM4 (Studer et al., 2002). CM4 has two 5,10-methylene- H_4F reductase gene homologs: a chromosomal *metF* shared by strain AM1 (99.7% amino acid identity) and a plasmid-borne *metF2* that is part of the



cmu cluster and shares only 26% amino acid identity with the chromosomal homolog. *Hyphomicrobium* sp. MC1 also contains two *metF* homologs, *metF* with 65.2% amino acid identity to the CM4 *metF* and *metF2* with 28.4% amino acid identity to the CM4 *metF2*. Since the native AM1 *metF* is unable to sustain growth with CM in the absence of *metF2* from *Hyphomicrobium* sp. MC1, we conclude that the chromosomal *metF* is either misregulated during growth on CM or is incapable of catalyzing the oxidative reaction with the necessary flux.

The partial fitness defect of the $\Delta purU$ *cmu* gene cassette contrasts with previous findings showing that this gene was essential for growth of CM4 with CM (Vannelli et al., 1999). We hypothesize that the formate- H_4F ligase FtlL is capable of catalyzing a limited flux from formyl- H_4F to formate. In a host such as AM1 with low CM flux, the reduction in flux from a *purU* deletion would likely only produce a small but measurable fitness cost. Reduction to a similar absolute level of flux in CM4 might either reduce growth to a level that gives the appearance of essentiality or lead to increased accumulation of one or more toxic intermediates.

The observed fitness cost of the *folD* deletion in the *cmu* cassette provides the first evidence that this enzyme plays an important role in CM catabolism. As with *purU*, however, the fact that the *folD* knockout still grows on CM strongly suggests that MtdA and Fch can carry C_1 flux in the oxidative direction (Figure 1A), albeit at levels insufficient for the $\Delta folD$ strain to match even the limited growth of AM1 with the intact *cmu* gene cluster. Indeed, previous work replacing MtdA and Fch with FolD in AM1 has shown that FolD is sufficient for growth on succinate, which requires relatively little flux through the H_4F pathway, but is insufficient for growth on methanol, which requires a much higher flux (Marx and Lidstrom, 2004). Both FolD and MtdA/Fch



appear to poorly catalyze the reverse reaction, presumably due either to enzyme biochemistry or to allosteric regulation (Martinez-Gomez et al., 2013). More broadly, these results are consistent with past work showing that the phenotype of lesions in C_1 metabolic pathways can vary dramatically between different environments depending on the level of flux through the pathway (Marx et al., 2003; Nayak and Marx, 2014).

We have not investigated the fitness effects of deleting *cmuA*, *cmuB*, or *cmuC*, each of which was previously reported to be required for growth of CM4 with CM (Vannelli et al., 1999).

Accessory Genes *hutI*, *paaE*, and *fmdB* Are Beneficial during Growth with CM in *M. extorquens* AM1

Based on operon structure and gene conservation, *paaE*, *hutI*, and *fmdB* were predicted to be involved in growth with CM. However, this work is the first direct demonstration that these genes are beneficial during growth with CM. None of the genes were necessary for growth with CM, but deleting them imposed fitness costs of 25–47%. Further work will be needed to elucidate the precise contribution from each of these accessory genes.

These deletion experiments may also explain our inability to productively transfer the *cmu* operon from its best-studied host, *M. extorquens* CM4, into closely related *Methylobacterium* strains. The gene clusters cloned from strains MC1 and CM4 differ in four genes (Figure 1B): gene *cmuC2* is only found in the CM4 cluster, while genes *fmdB*, *paaE*, and *hutI* were not included in the CM4 cluster that we cloned. Two of these genes, *fmdB*

and *hutI* are immediately adjacent to *cmuA* in *M. extorquens* CM4 and the third gene, *paaE*, occurs on the native CM4 plasmid pCMU01 roughly equidistant between the two segments that we amplified (Figure 1B). A simple multiplicative model based on our deletion studies, which assumes each mutation has a constant proportional effect on fitness regardless of the genetic background, would predict a fitness of ~20% for the triple deletion $\Delta fmdB\Delta hutI\Delta paaE$ relative to the full pJM105 plasmid. If introduction of plasmid pJM50, which lacks *fmdB*, *hutI*, and *paaE*, allowed strains to grow with CM, but only 20% as effectively as with pJM105, we would not have been able to detect the growth of pJM50 transconjugants. Additionally, the *cmu* cluster that we cloned from *Hyphomicrobium* sp. MC1 has the native gene order and spacing, unlike the CM4 cluster, and this may favor heterologous *cmu* gene expression. In our single-gene deletion experiments, the start and stop codons of the deleted gene were preserved to minimize polar effects on the remainder of the gene cluster. However, even such conservative deletions may affect transcript stability, and we cannot rule out fitness effects due to disruption of undetected genes in the gene cluster or truncated polypeptides resulting from the deletions.

While it is possible that complete transfer of the native 380 kb CM4 plasmid might suffice for effective growth with CM, attempts to transfer the entire plasmid into naïve recipients has not been successful. We also note that several other genes are present on the native CM4 plasmid, are specifically induced during growth on CM, were not transferred in our experiment, and therefore are not essential for CM catabolism in *Methylobacterium* strains (Roselli et al., 2013). We have shown in this work that *hutI*, *paaE*, and *fmdB* are beneficial, but not essential, during growth with CM. The additional CM-induced genes from the native CM4 plasmid may provide a similar fitness benefit during growth on CM. Our heterologous expression system offers a unique opportunity to explore these questions in a genetically tractable system such as *M. extorquens* AM1.

Chloride Transport Does Not Limit Growth with CM in AM1 or PA1

Growth with CM and DCM both require dechlorination, yet growth with DCM is dependent on the level of chloride efflux while growth with CM appears unaffected, based on our *ClcA* overexpression experiments. Growth on DCM was highly sensitive to the *clcA* expression level, with a twofold change in *clcA* providing a roughly four-fold change in fitness (Michener et al., 2014a). The chloride burden of growth on CM is half that of growth on DCM, so the native chloride export capacity of the recipients may suffice for CM growth. In combination with our observation that the fitness of a given recipient strain during growth on DCM is not predictive of its fitness during growth on CM, we conclude that growth with DCM and CM place different stresses on the cell. However, we note that both the *cmu* operon in *Hyphomicrobium* sp. MC1 and the pCMU01 plasmid in CM4 also contain a second copy of *clcA* that we chose not to include in our heterologous operons. The factors limiting growth on CM in *Methylobacterium* strains may differ from those in *Hyphomicrobium* strains, with native chloride export capacity potentially higher in the *Methylobacterium* strains.

Having demonstrated that chloride export mediated by *ClcA* does not limit heterologous CM growth, we propose several alternate hypotheses for the limited transconjugant fitness during growth on CM. First, growth on CM is strongly dependent on cobalamin and folate, and the large CM4 plasmid contains 16 genes involved in B₁₂ metabolism in addition to *Methylobacterium* core *cob* genes, as well as seven genes involved in folate metabolism, 6 of which do not have chromosomal homologs (Roselli et al., 2013). If chromosomally encoded cobalamin and folate metabolism is inefficient at providing the cofactors essential for dehalogenation, it would limit CM growth in the other *Methylobacterium* strains. Second, growth with CM introduces carbon at an unusual branch point in the *Methylobacterium* C₁ metabolic network (Nayak and Marx, 2014), requiring the reversal of a metabolic pathway that more commonly functions in the reductive direction during growth with methanol or DCM (Figure 1A). Therefore, the recipients may be misregulating their metabolic networks for the new demands placed upon them during growth with CM. Third, the transfer of a nine-gene pathway between microbial families may affect protein expression levels in the new genetic environment, with significant costs to pathway flux and organismal fitness (Chou et al., 2014). Experimental evolution of these transconjugants, selecting for increased fitness during growth on CM, will help to investigate these hypotheses (Michener et al., 2014a; Clark et al., 2015).

MATERIALS AND METHODS

Media and Chemicals

All chemicals were purchased from Sigma–Aldrich (St. Louis, MO, USA) unless otherwise noted. *Escherichia coli* were grown at 37°C in LB broth. *Methylobacterium* strains were grown in M-PIPES at 30°C, supplemented with 3.5 mM succinate for routine growth and with 12.5 µg/mL tetracycline as needed (Delaney et al., 2013). For CM growth, *Methylobacterium* strains were diluted to an OD₆₀₀ of 0.001 in 10 mL of M-PIPES without tetracycline in 50 mL glass flasks sealed with silicone rubber stoppers. A gas-tight syringe was then used to transfer 1 mL of CM from a gas sampling bulb maintained at 16 psig into the headspace of the sealed flask. Cultures were grown aerobically for three days before analysis.

Plasmid Construction and Matings

Genomic DNA from *Hyphomicrobium* sp. MC1 and *M. extorquens* CM4 were prepared using the Wizard Genomic DNA Purification Kit (Promega, Madison, WI, USA). To construct plasmid pJM50, two genomic regions were amplified from *M. extorquens* CM4 gDNA using the Q5 polymerase with the high GC enhancer (New England Biolabs, Ipswich, MA, USA) (Supplementary Table S3). A single 6.2 kb amplicon contained *cmuA*, *purU*, and *folD*, while a second 3.6 kb amplicon contained *metF*, *cmuB*, and *cmuC*. The amplicons were combined in the pCM62 plasmid backbone using Gibson assembly (NEB) and transformed

into chemically competent 10 β *E. coli* (NEB). To construct plasmid pJM105, a single genomic region was amplified from *Hyphomicrobium* sp. MC1 gDNA as three overlapping amplicons of 2.6, 4.2, and 3.6 kb and assembled as for pJM50. Plasmids were mated from the 10 β cloning *E. coli* strain into recipient *Methylobacterium* strains by tri-parental matings as described previously (Fulton et al., 1984).

To construct the deletion plasmids, pJM107-112, plasmid pJM105 was amplified by inverse PCR with primers designed to overlap and create a clean deletion. The desired open reading frame was truncated, deleting the majority of the gene while leaving the start and stop codons intact and in-frame to minimize polar effects. The resulting amplicons were circularized using Gibson assembly, transformed into chemically competent *E. coli*, and mated into *M. extorquens* AM1 as described above.

Competitive Fitness Assays

Fitness assays were performed largely as described previously (Lee et al., 2009). In brief, cultures were grown in M-PIPES containing succinate and tetracycline, then diluted to OD 0.01 in fresh M-PIPES containing CM. After two days of growth, the cultures were mixed with the appropriate competitor strain, diluted into fresh M-PIPES containing CM, and grown for a further three days. Pre-growth population samples were frozen at -80°C for later analysis. After competitive growth in mixed culture, the population ratios in the mixed culture both before and after growth were determined by flow cytometry (Michener et al., 2014a). Population sizes were determined based on optical density at 600 nm.

To measure the fitness of the pJM50 and pJM105 transconjugants, strains were competed against *M. extorquens* DM4 $\Delta dcmA$ Venus containing the appropriate plasmid (Michener et al., 2014a) or against *M. extorquens* CM4 containing an empty tetracycline plasmid, pCM62 (Marx and Lidstrom, 2001). To measure the fitness of the deletion plasmid transconjugants, the deletion plasmids were conjugated into *M. extorquens* AM1 Δcel Venus and competed against *M. extorquens* AM1 Δcel Cherry + pJM105. To measure the fitness of the chloride transport mutants, pJM105 was conjugated

into *M. extorquens* PA1 Δcel mCherry *clcA*^{E1} and *M. extorquens* AM1 Δcel mCherry *clcA*^{E1} and competed against *M. extorquens* DM4 $\Delta dcmA$ Venus + pJM105 (Michener et al., 2014b).

AUTHOR CONTRIBUTIONS

All authors contributed to the design of experiments, the interpretation of data, and drafting of the manuscript. Experiments were performed by JM.

FUNDING

The authors acknowledge financial support from the National Institutes of Health (F32 GM106629 to JM). Oak Ridge National Laboratory is managed by UT Battelle, LLC under Contract No. DE-AC05-00OR22725 for the U.S. Department of Energy.

ACKNOWLEDGMENTS

This manuscript has been authored by UT-Battelle, LLC under Contract No. DE-AC05-00OR22725 with the U.S. Department of Energy. The United States Government retains and the publisher, by accepting the article for publication, acknowledges that the United States Government retains a non-exclusive, paid-up, irrevocable, world-wide license to publish or reproduce the published form of this manuscript, or allow others to do so, for United States Government purposes. The Department of Energy will provide public access to these results of federally sponsored research in accordance with the DOE Public Access Plan (<http://energy.gov/downloads/doe-public-access-plan>).

SUPPLEMENTARY MATERIAL

The Supplementary Material for this article can be found online at: <http://journal.frontiersin.org/article/10.3389/fmicb.2016.01116>

REFERENCES

- Chistoserdova, L., Vorholt, J. A., Thauer, R. K., and Lidstrom, M. E. (1998). C1 transfer enzymes and coenzymes linking methylotrophic bacteria and methanogenic archaea. *Science* 281, 99–102. doi: 10.1126/science.281.5373.99
- Chou, H. H., Delaney, N. F., Draghi, J. A., and Marx, C. J. (2014). Mapping the fitness landscape of gene expression uncovers the cause of antagonism and sign epistasis between adaptive mutations. *PLoS Genet.* 10:e1004149. doi: 10.1371/journal.pgen.1004149
- Clark, I. C., Melnyk, R. A., Youngblut, M. D., Carlson, H. K., Iavarone, A. T., and Coates, J. D. (2015). Synthetic and evolutionary construction of a chlorate-reducing *Shewanella oneidensis* MR-1. *MBio* 6:e00282-15. doi: 10.1128/mBio.00282-15
- Crowther, G. J., Kosály, G., and Lidstrom, M. E. (2008). Formate as the main branch point for methylotrophic metabolism in *Methylobacterium extorquens* AM1. *J. Bacteriol.* 190, 5057–5062. doi: 10.1128/JB.00228-08
- Delaney, N. F., Kaczmarek, M. E., Ward, L. M., Swanson, P. K., Lee, M. C., and Marx, C. J. (2013). Development of an optimized medium, strain and high-throughput culturing methods for *Methylobacterium extorquens*. *PLoS ONE* 8:e62957. doi: 10.1371/journal.pone.0062957
- Doronina, N. V., Sokolov, A. P., and Trotsenko, Y. A. (1996). Isolation and initial characterization of aerobic chloromethane-utilizing bacteria. *FEMS Microbiol. Lett.* 142, 179–183. doi: 10.1111/j.1574-6968.1996.tb08427.x
- Fulton, G. L., Nunn, D. N., and Lidstrom, M. E. (1984). Molecular cloning of a malylyl coenzyme A lyase gene from *Pseudomonas* sp. strain AM1, a facultative methylotroph. *J. Bacteriol.* 160, 718–723.
- Gälli, R., and Leisinger, T. (1985). Specialized bacterial strains for the removal of dichloromethane from industrial waste. *Conserv. Recycling* 8, 91–100. doi: 10.1016/0361-3658(85)90028-1
- Hartmans, S., Schmucke, A., Cook, A. M., and Leisinger, T. (1986). Methyl chloride: naturally occurring toxicant and C-1 growth substrate. *J. Gen. Microbiol.* 132, 1139–1142. doi: 10.1099/00221287-132-4-1139

- Kayser, M. F., Ucurum, Z., and Vuilleumier, S. (2002). Dichloromethane metabolism and C1 utilization genes in *Methylobacterium* strains. *Microbiology* 148, 1915–1922. doi: 10.1099/00221287-148-6-1915
- Keppler, F., Harper, D. B., Röckmann, T., Moore, R. M., and Hamilton, J. T. G. (2005). New insight into the atmospheric chloromethane budget gained using stable carbon isotope ratios. *Atmos. Chem. Phys.* 5, 2403–2411. doi: 10.5194/acp-5-2403-2005
- Knief, C., Frances, L., and Vorholt, J. A. (2010). Competitiveness of diverse *Methylobacterium* strains in the phyllosphere of *Arabidopsis thaliana* and identification of representative models, including *M. extorquens* PA1. *Microb. Ecol.* 60, 440–452. doi: 10.1007/s00248-010-9725-3
- La Roche, S. D., and Leisinger, T. (1990). Sequence analysis and expression of the bacterial dichloromethane dehalogenase structural gene, a member of the glutathione S-transferase supergene family. *J. Bacteriol.* 172, 164–171.
- Lee, M. C., Chou, H. H., and Marx, C. J. (2009). Asymmetric, bimodal trade-offs during adaptation of *Methylobacterium* to distinct growth substrates. *Evolution* 63, 2816–2830. doi: 10.1111/j.1558-5646.2009.00757.x
- Martinez-Gomez, N. C., Nguyen, S., and Lidstrom, M. E. (2013). Elucidation of the role of the methylene-tetrahydromethanopterin dehydrogenase MtdA in the tetrahydromethanopterin-dependent oxidation pathway in *Methylobacterium extorquens* AM1. *J. Bacteriol.* 195, 2359–2367. doi: 10.1128/JB.00029-13
- Marx, C. J., Bringel, F., Chistoserdova, L., Moulin, L., Farhan Ul Haque, M., Fleischman, D. E. et al. (2012). Complete genome sequences of six strains of the genus *Methylobacterium*. *J. Bacteriol.* 194, 4746–4748. doi: 10.1128/JB.01009-12
- Marx, C. J., Laukel, M., Vorholt, J. A., and Lidstrom, M. E. (2003). Purification of the formate-tetrahydrofolate ligase from *Methylobacterium extorquens* AM1 and demonstration of its requirement for methylotrophic growth. *J. Bacteriol.* 185, 7169–7175. doi: 10.1128/JB.185.24.7169-7175.2003
- Marx, C. J., and Lidstrom, M. E. (2001). Development of improved versatile broad-host-range vectors for use in methylotrophs and other Gram-negative bacteria. *Microbiology* 147, 2065–2075. doi: 10.1099/00221287-147-8-2065
- Marx, C. J., and Lidstrom, M. E. (2004). Development of an insertional expression vector system for *Methylobacterium extorquens* AM1 and generation of null mutants lacking *mtaA* and/or *fch*. *Microbiology* 150, 9–19. doi: 10.1099/mic.0.26587-0
- Marx, C. J., Van Dien, S. J., and Lidstrom, M. E. (2005). Flux analysis uncovers key role of functional redundancy in formaldehyde metabolism. *PLoS Biol.* 3:e16. doi: 10.1371/journal.pbio.0030016
- McAnulla, C., Woodall, C. A., McDonald, I. R., Studer, A., Vuilleumier, S., Leisinger, T., et al. (2001). Chloromethane utilization gene cluster from *Hyphomicrobium chloromethanicum* strain CM2(T) and development of functional gene probes to detect halomethane-degrading bacteria. *Appl. Environ. Microbiol.* 67, 307–316. doi: 10.1128/AEM.67.1.307-316.2001
- Michener, J. K., Camargo Neves, A. A., Vuilleumier, S., Bringel, F., and Marx, C. J. (2014a). Effective use of a horizontally-transferred pathway for dichloromethane catabolism requires post-transfer refinement. *Elife* 3:e04279. doi: 10.7554/eLife.04279
- Michener, J. K., Vuilleumier, S., Bringel, F., and Marx, C. J. (2014b). Phylogeny poorly predicts the utility of a challenging horizontally transferred gene in *Methylobacterium* strains. *J. Bacteriol.* 196, 2101–2107. doi: 10.1128/JB.00034-14
- Nadalig, T., Farhan Ul Haque, M., Roselli, S., Schaller, H., Bringel, F., and Vuilleumier, S. (2011). Detection and isolation of chloromethane-degrading bacteria from the *Arabidopsis thaliana* phyllosphere, and characterization of chloromethane utilization genes. *FEMS Microbiol. Ecol.* 77, 438–448. doi: 10.1111/j.1574-6941.2011.01125.x
- Nadalig, T., Greule, M., Bringel, F., Keppler, F., and Vuilleumier, S. (2014). Probing the diversity of chloromethane-degrading bacteria by comparative genomics and isotopic fractionation. *Front. Microbiol.* 5:523. doi: 10.3389/fmicb.2014.00523
- Nayak, D. D., and Marx, C. J. (2014). Methylamine utilization via the N-methylglutamate pathway in *Methylobacterium extorquens* PA1 involves a novel flow of carbon through C₁ assimilation and dissimilation pathways. *J. Bacteriol.* 196, 4130–4139. doi: 10.1128/JB.02026-14
- Peel, D., and Quayle, J. R. (1961). Microbial growth on C1 compounds. I. Isolation and characterization of *Pseudomonas* AM1. *Biochem. J.* 81, 465–469. doi: 10.1042/bj0810465
- Roselli, S., Nadalig, T., Vuilleumier, S., and Bringel, F. (2013). The 380 kb pCMU01 plasmid encodes chloromethane utilization genes and redundant genes for vitamin B₁₂- and tetrahydrofolate-dependent chloromethane metabolism in *Methylobacterium extorquens* CM4: a proteomic and bioinformatics study. *PLoS ONE* 8:e56598. doi: 10.1371/journal.pone.0056598
- Sanders, S. W., and Maxcy, R. B. (1979). Patterns of cell division, DNA base compositions, and fine structures of some radiation-resistant vegetative bacteria found in food. *Appl. Environ. Microbiol.* 37, 159–168.
- Schäfer, H., McDonald, I. R., Nightingale, P. D., and Murrell, J. C. (2005). Evidence for the presence of a CmuA methyltransferase pathway in novel marine methyl halide-oxidizing bacteria. *Environ. Microbiol.* 7, 839–852. doi: 10.1111/j.1462-2920.2005.00757.x
- Studer, A., McAnulla, C., Büchele, R., Leisinger, T., and Vuilleumier, S. (2002). Chloromethane-induced genes define a third C1 utilization pathway in *Methylobacterium chloromethanicum* CM4. *J. Bacteriol.* 184, 3476–3484. doi: 10.1128/JB.184.13.3476-3484.2002
- Studer, A., Stupperich, E., Vuilleumier, S., and Leisinger, T. (2001). Chloromethane: tetrahydrofolate methyl transfer by two proteins from *Methylobacterium chloromethanicum* strain CM4. *Eur. J. Biochem.* 268, 2931–2938. doi: 10.1046/j.1432-1327.2001.02182.x
- Sy, A., Giraud, E., Jourand, P., Garcia, N., Willems, A., de Lajudie, P., et al. (2001). Methylotrophic *Methylobacterium* bacteria nodulate and fix nitrogen in symbiosis with legumes. *J. Bacteriol.* 183, 214–220. doi: 10.1128/JB.183.1.214-220.2001
- Van Aken, B., Peres, C. M., Doty, S. L., Yoon, J. M., and Schnoor, J. L. (2004). *Methylobacterium populi* sp. nov., a novel aerobic, pink-pigmented, facultatively methylotrophic, methane-utilizing bacterium isolated from poplar trees (*Populus deltoides* × *nigra* DN34). *Int. J. Syst. Evol. Microbiol.* 54, 1191–1196. doi: 10.1099/ijs.0.02796-0
- Vannelli, T., Messmer, M., Studer, A., Vuilleumier, S., and Leisinger, T. (1999). A corrinoid-dependent catabolic pathway for growth of a *Methylobacterium* strain with chloromethane. *Proc. Natl. Acad. Sci. U.S.A.* 96, 4615–4620. doi: 10.1073/pnas.96.8.4615
- Vannelli, T., Studer, A., Kertesz, M., and Leisinger, T. (1998). Chloromethane metabolism by *Methylobacterium* sp. strain CM4. *Appl. Environ. Microbiol.* 64, 1933–1936.
- Vuilleumier, S., Nadalig, T., Farhan Ul Haque, M., Magdelenat, G., Lajus, A., Roselli, S., et al. (2011). Complete genome sequence of the chloromethane-degrading *Hyphomicrobium* sp. strain MC1. *J. Bacteriol.* 193, 5035–5036. doi: 10.1128/JB.05627-11
- Warner, K. L., Larkin, M. J., Harper, D. B., Murrell, J. C., and McDonald, I. R. (2005). Analysis of genes involved in methyl halide degradation in *Aminobacter lissarensis* CC495. *FEMS Microbiol. Lett.* 251, 45–51. doi: 10.1016/j.femsle.2005.07.021
- Woodall, C. A., Warner, K. L., Oremland, R. S., Murrell, J. C., and McDonald, I. R. (2001). Identification of methyl halide-utilizing genes in the methyl bromide-utilizing bacterial strain IMB-1 suggests a high degree of conservation of methyl halide-specific genes in Gram-negative bacteria. *Appl. Environ. Microbiol.* 67, 1959–1963. doi: 10.1128/AEM.67.4.1959-1963.2001
- World Meteorological Organization (2014). *Assessment for Decision-Makers: Scientific Assessment of Ozone Depletion: 2014. Global Ozone Research and Monitoring Project*. Geneva: World Meteorological Organization.
- Yokouchi, Y., Nojiri, Y., Barrie, L. A., Toom-Sauntry, D., Machida, T., Inuzuka, Y., et al. (2000). A strong source of methyl chloride to the atmosphere from tropical coastal land. *Nature* 403, 295–298. doi: 10.1038/3502049

Conflict of Interest Statement: The authors declare that the research was conducted in the absence of any commercial or financial relationships that could be construed as a potential conflict of interest.

Copyright © 2016 Michener, Vuilleumier, Bringel and Marx. This is an open-access article distributed under the terms of the Creative Commons Attribution License (CC BY). The use, distribution or reproduction in other forums is permitted, provided the original author(s) or licensor are credited and that the original publication in this journal is cited, in accordance with accepted academic practice. No use, distribution or reproduction is permitted which does not comply with these terms.