

## MIT Open Access Articles

*Construction of Multichromophoric Spectra from Monomer Data: Applications to Resonant Energy Transfer*

The MIT Faculty has made this article openly available. **Please share** how this access benefits you. Your story matters.

**Citation:** Chenu, Aurélia and Cao, Jianshu. "Construction of Multichromophoric Spectra from Monomer Data: Applications to Resonant Energy Transfer." *Physical Review Letters* 118 (2017 January): 013001. © 2017 American Physical Society

**As Published:** <http://dx.doi.org/10.1103/PhysRevLett.118.013001>

**Publisher:** American Physical Society

**Persistent URL:** <http://hdl.handle.net/1721.1/108769>

**Version:** Final published version: final published article, as it appeared in a journal, conference proceedings, or other formally published context

**Terms of Use:** Article is made available in accordance with the publisher's policy and may be subject to US copyright law. Please refer to the publisher's site for terms of use.



## Construction of Multichromophoric Spectra from Monomer Data: Applications to Resonant Energy Transfer

Aurélia Chenu<sup>\*</sup> and Jianshu Cao<sup>†</sup>

*Massachusetts Institute of Technology, 77 Massachusetts Avenue, Cambridge, Massachusetts 02139, USA*  
(Received 30 August 2016; published 3 January 2017)

We develop a model that establishes a quantitative link between the physical properties of molecular aggregates and their constituent building blocks. The relation is built on the coherent potential approximation, calibrated against exact results, and proven reliable for a wide range of parameters. It provides a practical method to compute spectra and transfer rates in multichromophoric systems from experimentally accessible monomer data. Applications to Förster energy transfer reveal optimal transfer rates as functions of both the system-bath coupling and intra-aggregate coherence.

DOI: [10.1103/PhysRevLett.118.013001](https://doi.org/10.1103/PhysRevLett.118.013001)

Molecular self-assembly is used in nature to build complex structures and regulate material properties [1], and can also be exploited for the fabrication of versatile nanostructures [2]. The spatial arrangement of chromophoric building blocks strongly influences the electronic distribution [3], enabling a broad range of optical and transport properties [4]. Nature has mastered this art, evolving from a very limited number of monomers an impressive diversity of photosynthetic light-harvesting complexes [5], which are known to be highly versatile [6] and efficient in absorbing sunlight and transferring the subsequent excitation [4,7]. Understanding the sensitive interplay between monomer and superstructure (composed of monomers), and its influence on the optical, electronic, and transport properties is highly desirable for the synthesis of new materials [3], the design and operation of organic-based devices [8], including solar cells [9], transistors, light-emitting diodes [10], and flexible electronics [11]. Yet despite its fundamental role, the relationship between molecular superstructure and physical properties lacks systematic quantitative understanding. In this Letter, we derive such a quantitative method, by establishing the relation between the aggregate spectra and its constituent monomer building blocks; we further calibrate it against exact results, and apply the theory to the important dynamical process of resonant energy transfer.

Optical excitations of organic compounds involve both electronic and vibrational degrees of freedom [12]. While the exciton-phonon interaction is well understood for monomers [13–15], the electronic coupling in superstructures such as multichromophoric (MC) complexes delocalizes the excitation [16] and therefore requires the treatment of electron-vibrational coupling, excitonic coupling, and disorder on an equal footing [17]. The available techniques, either exact such as stochastic path integral (SPI) [18] and hierarchical equation of motions (HEOM) [19–21], or approximate such as full-cumulant expansion (FCE) [22], 2nd-order time convolution [23], time

convolutionless [24,25], and other recent developments [26,27], are computationally expensive and not universally applicable to relate the structure to optical properties. These treatments require microscopic Hamiltonians and thus are not explicit about the structure-spectra relation. Our approach establishes such a relation: it allows us to predict the physical properties of complex structures or, conversely, infer the structure from its measured properties.

While construction of the optical properties is important in its own right, the spectra also provide additional transport information. The transfer rates between weakly coupled excitonic systems can be obtained from the overlap of the donor emission and acceptor absorption spectra using Förster resonant energy transfer (FRET) [28]. The original FRET theory describes the environment through its effect on the monomer spectra. Extensions to MC systems [29–32], where the donor or acceptor are composed of coupled chromophores, demonstrated that the far-field linear spectroscopic line shapes are insufficient; rather, the near-field, polarization-resolved aggregate spectra are needed to obtain the MCFT (MC fluorescent transfer) rate in general. Though nonlinear spectroscopic experiments [33] could, in principle, be used, the required information is not accessible with current experimental techniques [32]. The theory developed here solves this problem, allowing for the construction of the aggregate spectra from the experimentally accessible monomer spectra.

Our model is based on the coherent potential approximation (CPA) [34]: it treats the vibrational coupling exactly at the monomer level and includes all orders of electronic coupling, treated exactly up to the second order and approximately for higher orders. Benchmarks against exact SPI [18] and FCE [22] calculations show that our model is reliable over a wide range of parameters. Our theory applies to MCFT and recovers some aspects of the classical treatments [35–38] as a limiting case. It completes the series of papers quantifying the reliability of different quantum models in MC systems [18,22,39].

*Monomer spectra.*—We introduce the notation and exact formulation of monomer spectra using the independent boson model [14]. Consider a single monomer coupled to a thermal phonon bath, both labeled by  $n$ , and characterized by the spin-boson Hamiltonian

$$H_0^{(n)} = H_{0S}^{(n)} + H_B^{(n)} + H_{SB}^{(n)}, \quad (1)$$

where  $H_{0S}^{(n)} = E_n B_n^\dagger B_n$  denotes the Hamiltonian of the electronic system,  $H_B^{(n)} = \sum_k \hbar \omega_{n,k} b_{n,k}^\dagger b_{n,k}$  that of the bath, and  $H_{SB}^{(n)} = B_n^\dagger B_n \sum_k g_{n,k} (b_{n,k}^\dagger + b_{n,k})$  their coupling, which is taken linear in the bath coordinate. The operator  $B_n^\dagger$  creates an excitation on monomer  $n$ , forming the state  $B_n^\dagger |\text{vac}\rangle = |n\rangle$ ;  $b_{n,k}^\dagger$  creates a phononic excitation in mode  $k$ . The excited state energy  $E_n = \hbar \omega_n^0 + \lambda_n$  includes the reorganization energy  $\lambda_n = \sum_k g_{n,k} / \omega_{n,k}$ . Interaction with the electric field is treated semiclassically through the system-radiation interaction Hamiltonian  $H_{SR}^{(n)} = \hat{\mu}_n \cdot E \hat{e}$ , where  $\hat{\mu}_n = \vec{\mu}_{ng} B_n^\dagger + \text{H.c.}$  denotes the transition dipole moment operator and  $\hat{e}$  is a unit vector.

Following Sumi [34], we use the retarded Green's function [14] associated with the monomer Hamiltonian (1),

$$\mathcal{G}_{nn}^0(t) = -\frac{i}{\hbar} \Theta(t) e^{(i/\hbar)H_0^{(n)}t} B_n e^{-(i/\hbar)H_0^{(n)}t} B_n^\dagger, \quad (2)$$

to define the optical spectra—all given in units of energy here. The absorption spectrum is obtained from the imaginary part of the Green's function averaged over the phonon bath,  $\langle \mathcal{G}_{nn}^0(\omega) \rangle_g$ , where  $\langle \bullet \rangle_g \equiv \text{Tr}_B[\bullet \rho_g^0]$  denotes the trace over the bath using the density matrix of the system bath in its ground state,  $\rho_g^0$ . The experimentally accessible spectrum includes the dipole transition,  $I_{\text{exp}}^{(n)}(\omega) = (\hat{e} \cdot \vec{\mu}_{gn}) I_0^{(n)}(\omega) (\vec{\mu}_{ng} \cdot \hat{e})$ , where

$$I_0^{(n)}(\omega) = -2\text{Im} \int_{-\infty}^{\infty} dt e^{i\omega t} \text{Tr}_B[\mathcal{G}_{nn}^0(t) \rho_g^0]. \quad (3)$$

This monomer spectrum can be evaluated exactly as follows. Assuming a Franck-Condon transition from the ground state, the initial state can be taken as the factorized state  $\rho_g^0 = \mathbb{1}_S \otimes \rho_B$ , where  $\rho_B = e^{-\beta H_B^{(n)}} / \text{Tr}[e^{-\beta H_B^{(n)}}]$  is the bath density matrix at equilibrium, with  $\beta^{-1} = k_B T$ . For a harmonic bath at thermal equilibrium, the absorption line shape (3) is exactly

$$I_0^{(n)}(\omega) = \frac{2}{\hbar} \text{Re} \int_0^{\infty} dt e^{i\omega t} e^{-i\omega_{ng}t} e^{-g_n(t)}, \quad (4)$$

where  $\omega_{ng} \equiv (E_n - E_g)/\hbar$  and  $E_g$  denotes the electronic ground state energy. The line shape function  $g_n(t) = \int_0^t d\tau_1 \int_0^{\tau_2} d\tau_2 C_n(\tau_2)$  is obtained from the bath auto-correlation function  $C_n(\tau) = (1/\hbar^2) \langle H_{SB}^{(n)}(\tau) H_{SB}^{(n)}(0) \rangle$ ,

and can be evaluated exactly assuming a Drude spectral density,  $C_n''(\omega) \equiv 2\lambda_n \Lambda \omega / (\omega^2 + \Lambda^2)$ , with  $\Lambda$  the cutoff frequency [13].

Steady-state emission occurs after the entire system bath has equilibrated within the single-exciton manifold and is obtained from  $\langle \mathcal{G}_{nn}^0(\omega) \rangle_e$ , with  $\langle \bullet \rangle_e \equiv \text{Tr}_B[\bullet \rho_e^0]$ . The initial state  $\rho_e^0$  entering the averaged Green's function is not factorized anymore, and the system-bath entanglement needs to be considered [22]. Instead of a direct calculation, we follow Refs. [18,25,29] and use the detailed balance condition [40] to obtain the emission spectrum from the absorption,

$$E_0^{(n)}(\omega) = \frac{e^{\beta \hbar \omega}}{Z^{(n)}} I_0^{(n)}(\omega), \quad (5)$$

where  $Z^{(n)} = \text{Tr}[e^{-\beta H_{0S}^{(n)}} e^{-\beta H_B^{(n)}}]$  is the monomer partition function.

*Multichromophoric spectra.*—Consider now a system of  $N$  coupled chromophores described by

$$H = H_0 + V, \quad (6)$$

where  $H_0 = \sum_{n=1}^N H_0^{(n)}$  is the sum over  $N$  independent monomers (1), which includes exciton-phonon interaction, and  $V = \sum_{n \neq m} V_{nm} B_n^\dagger B_m$  characterizes the intermonomer coupling, typically of dipole-dipole nature. The operator  $B_n^\dagger$  now denotes excitation of the  $n$ th monomer exclusively. Interaction with light is now characterized by  $H_{SR} = \sum_n H_{SR}^{(n)}$ . We denote  $\mathcal{G}$  and  $\mathcal{G}^0$  the  $N \times N$  matrices formed by the Green's functions associated, respectively, with the total Hamiltonian  $H$  and the unperturbed Hamiltonian  $H_0$ , which matrix elements are

$$\mathcal{G}_{nn'}(t) = -\frac{i}{\hbar} \Theta(t) e^{(i/\hbar)Ht} B_n e^{-(i/\hbar)Ht} B_{n'}^\dagger, \quad (7a)$$

$$\mathcal{G}_{nn'}^0(t) = -\frac{i}{\hbar} \Theta(t) e^{(i/\hbar)H_0 t} B_n e^{-(i/\hbar)H_0 t} B_{n'}^\dagger. \quad (7b)$$

Note that the diagonal elements of  $\mathcal{G}^0$  are equal to the monomer Green's functions (2). In principle, the MC Green's function  $\mathcal{G}$  can be exactly expressed using the unperturbed Green's function  $\mathcal{G}^0$  and the self-energy according to Dyson's equation [14]. Tracing over the phonon bath would then provide the MC absorption and emission tensors,  $\mathbf{I}(\omega) = -2\text{Im} \langle \mathcal{G}(\omega) \rangle_g$  and  $\mathbf{E}(\omega) = -2\text{Im} \langle \mathcal{G}(\omega) \rangle_e$ , respectively. However, while an exact solution exists for single monomers (1), the intermonomer coupling  $V$  in MC systems (6) tends to delocalize the electronic excitation and mix the vibrational and electronic degrees of freedom. Evaluating the trace then requires methods numerically expensive [18], and often approximate [22,39].

The approximate theory derived here provides an analytical expression in terms of the constituent spectra and structural properties, allowing for an explicit relation between the optical properties and the structure. Using the

integral representation of the exponential, the bath-averaged total Green's function can be expanded, in the time or frequency domain, as [41]

$$\langle \mathcal{G} \rangle = \langle \mathcal{G}^0 \rangle + \langle \mathcal{G}^0 V \mathcal{G}^0 \rangle + \langle \mathcal{G}^0 V \mathcal{G}^0 V \mathcal{G}^0 \rangle + \dots, \quad (8)$$

where the  $\langle \bullet \rangle$  denote the trace over the bath and the subscript ( $g$  or  $e$ ) characterizing the initial state will be specified as needed. The 0th order term is simply the diagonal matrix of the monomeric Green's function (2) with the proper initial state, i.e.,  $\langle \mathcal{G}^0 \rangle_{g/e} = (\langle \mathcal{G}_{nn}^0 \rangle_{g/e})$ . The first-order term can be evaluated exactly for the factorized initial state,  $\langle \bullet \rangle_g$ , because (i) the trace then commutes with the bath density operator, (ii) there is one and only one electronic transition involved, and (iii) the individual baths are uncorrelated. The trace can thus be split exactly,

$$\langle \mathcal{G}^0 V \mathcal{G}^0 \rangle_g = \langle \mathcal{G}^0 \rangle_g \mathbf{V} \langle \mathcal{G}^0 \rangle_g, \quad (9)$$

where  $\mathbf{V} = (V_{nm})$  is a tensor. For the second-order term in Eq. (8), we neglect the phonon correlations and take

$$\langle \mathcal{G}_{nn}^0(\omega) \mathcal{G}_{nn}^0(\omega) \rangle_g \approx \langle \mathcal{G}_{nn}^0(\omega) \rangle_g \langle \mathcal{G}_{nn}^0(\omega) \rangle_g. \quad (10)$$

This approximation is analogous to the decoupling scheme used in the single-site dynamical coherent potential approximation (CPA) [15] and will be referred as such. It is the main approximation here, yielding to our key result. It allows simplifying all higher orders such that the full Green's function (8) with the initial ground-state density matrix reduces to

$$\langle \mathcal{G}(\omega) \rangle_g \approx \frac{\langle \mathcal{G}^0(\omega) \rangle_g}{\mathbb{1}_N - \mathbf{V} \langle \mathcal{G}^0(\omega) \rangle_g}. \quad (11)$$

The CPA approach treats the bath coupling exactly at the monomer level. It is exact up to the second order of intra-aggregate coupling  $V$  and includes all higher orders approximately. As such, our approach is more robust than other methods derived for weak coupling [42,43], especially in highly delocalized cases.

The MC absorption tensor is then simply

$$\mathbf{I}_{\text{CPA}}(\omega) = -2\text{Im} \frac{\langle \mathcal{G}^0(\omega) \rangle_g}{\mathbb{1}_N - \mathbf{V} \langle \mathcal{G}^0(\omega) \rangle_g}. \quad (12)$$

The far-field, measurable absorption spectrum, is given by  $I_{\text{exp}}(\omega) = \sum_{nn'} (\hat{\mathbf{e}} \cdot \vec{\mu}_n) I_{nn'}(\omega) (\vec{\mu}_{n'} \cdot \hat{\mathbf{e}})$ . Note that in calculating the full MC tensor, the CPA requires knowledge of both the real and imaginary parts of the monomeric Green's function  $\langle \mathcal{G}^0(\omega) \rangle_g$ . The latter is accessible experimentally through the absorption spectra of the constituent monomers and their transition dipole moments; the real part is related through the Kramer-Kronig relation [13]. The CPA approach therefore allows constructing the MC absorption tensor (12) from its monomer features, either experimentally or theoretically accessible. Also, we show in Ref. [41] that Eq. (12) reduces to the tensor derived from a classical

picture of oscillating dipoles [37,38], when the coupling is restricted to dipole-dipole interaction. This suggests that the CPA approximation (10) is implicit in the classical electrostatic treatment of absorption [44].

Direct application of the CPA (10) with ( $g \rightarrow e$ ) yields the emission tensor

$$\mathbf{E}_{\text{CPA}}(\omega) = -2\text{Im} \frac{\langle \mathcal{G}^0(\omega) \rangle_e}{\mathbb{1}_N + \mathbf{V} \langle \mathcal{G}^0(\omega) \rangle_e}, \quad (13)$$

where the initial density matrix is the equilibrium state in the first-excited manifold  $\rho_e^0$ . Because of the initial system-bath entanglement, the separation of averaging (9) with ( $g \rightarrow e$ ) is no longer exact, and the CPA is approximate already in the first order of  $V$  for the emission tensor. Numerical simulations show that the prediction is similar to the sum of the monomer emission spectra (5), and therefore deviates from the exact solution for strong coupling [Fig. 1(b)]. Instead of Eq. (13) and similarly to the monomer treatment (5), we calculate the emission tensor from the detailed balance (DB), which applies to the total system as

$$\mathbf{E}(\omega) = \frac{e^{\beta\hbar\omega}}{\text{Tr}[e^{-\beta H}]} \mathbf{I}(\omega). \quad (14)$$

We label this emission tensor by “CPA<sub>DB</sub>” when using Eq. (12) for the absorption tensor  $\mathbf{I}(\omega)$ . The normalization

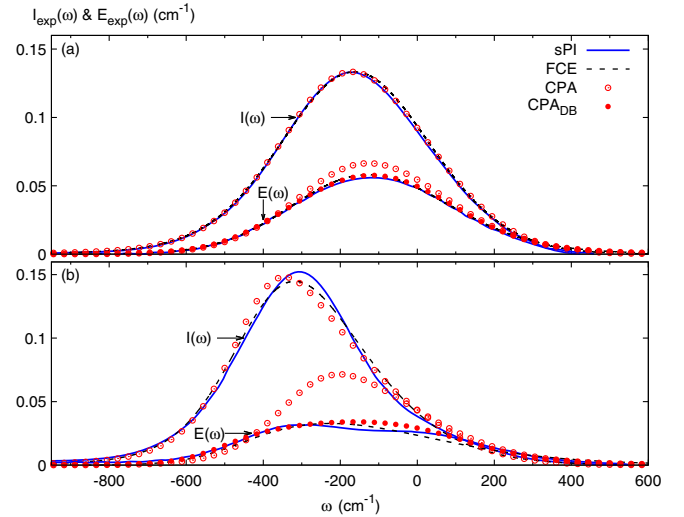


FIG. 1. Comparison of models for MC absorption  $I_{\text{exp}}(\omega)$  and emission  $E_{\text{exp}}(\omega)$  spectra, for (a) localized and (b) delocalized dimers. Absorption (12) obtained from the CPA treatment developed here well matches SPI exact [18] and FCE approximate [22] results; emission spectra (13) resemble the sum of the individual spectra (not shown here), and are not accurate for large interchromophore couplings (b). Adding detailed balance, the CPA<sub>DB</sub> (14) provides accurate results over a wide range of couplings. The difference between CPA and CPA<sub>DB</sub> displays the influence of the system-bath entanglement, which is important for emission. Parameters correspond to (a) case I ( $V = 20$ ,  $\Delta E_{21} \equiv E_2 - E_1 = 100$  cm<sup>-1</sup>) and (b) case II ( $V = 100$ ,  $\Delta E_{21} = 20$  cm<sup>-1</sup>) in Ref. [22] with  $\lambda = 100$  cm<sup>-1</sup>,  $\Lambda = 53$  cm<sup>-1</sup>,  $T = 300$  K, and  $\hat{\mathbf{e}}$  along  $\vec{\mu}$ .

factor can be obtained either from direct SPI calculation [45] or from the absorption spectrum using the mirror property of the spectra, i.e.,  $\mathbf{E}(\omega^0 - \lambda - \omega) = \mathbf{I}(\omega^0 + \lambda + \omega)/Z_{0S}$ , where  $Z_{0S} \equiv \text{Tr}(e^{-\beta \sum_n H_{0S}^{(n)}})$  is given by the monomer system Hamiltonian [13,18]. The emission spectrum is then  $E_{\text{exp}}(\omega) = \hat{\mathbf{e}} \cdot [\hat{\boldsymbol{\mu}}^T \cdot \mathbf{E}(\omega) \cdot \hat{\boldsymbol{\mu}}] \cdot \hat{\mathbf{e}}$ .

Figure 1 presents the absorption and emission spectra for the two dimers detailed in Ref. [22], i.e., for weak and strong interchromophore coupling  $V$ . It is shown that the proposed treatment [Eqs. (12)–(14)] provides accurate predictions for both spectra, even for relatively strong coupling— $V/\lambda = 1$  in Fig. 1(b). The CPA with detailed balance (14) greatly enhances the results over the CPA only (13), thereby showing the importance of the bath's first-order correlation function when the initial state is the system-bath entangled density matrix. Comparisons with the FCE over a wider range of parameters are presented in Ref. [41].

*Application to energy transfer rate.*—Knowledge of the spectral tensors allows for the determination of the transfer rate between a donor ( $D$ ) and an acceptor ( $A$ ) aggregate using Fermi's golden rule. We consider a system of  $M$ -coupled donor and  $N$ -coupled acceptor chromophores described by the total Hamiltonian

$$H^{AD} = H^A + H^D + J^{AD}, \quad (15)$$

where the MC Hamiltonian of the donor  $H^D = H_0^D + V^D$  and that of the acceptor  $H^A = H_0^A + V^A$  is described by Eq. (6), changing  $B_n \rightarrow D_n(A_n)$ , respectively, and where the interchromophore coupling is  $V^D = \sum_{m \neq m'} V_{mm'}^D D_m^\dagger D_{m'}$  and  $V^A = \sum_{n \neq n'} V_{nn'}^A A_n^\dagger A_{n'}$ .  $J^{AD}$  denotes the coupling between the donor-acceptor chromophores, i.e.,  $J^{AD} = \sum_n \sum_m J_{nm}^{AD} A_n^\dagger D_m + \text{H.c.}$  The operators  $D_m^\dagger$  and  $A_n^\dagger$ , respectively, denote excitation of the donor monomer  $m$  and the acceptor monomer  $n$ .

The rate of multichromophoric Förster resonant energy transfer is given by the overlap of the emission and absorption tensors [22,25,32],

$$k = \int_{-\infty}^{\infty} \frac{d\omega}{2\pi} \text{Tr}[\mathbf{J}^T \mathbf{E}^D(\omega) \mathbf{J} \mathbf{I}^A(\omega)], \quad (16)$$

where the matrix  $\mathbf{J} = (J_{nm}^{AD})$  denotes the donor-acceptor coupling strength. The emission and absorption tensors, respectively,  $\mathbf{E}^D(\omega) = [E_{mm'}^D(\omega)]$  and  $\mathbf{I}^A(\omega) = [I_{nn'}^A(\omega)]$ , are the polarization-resolved near-field spectral components, which are known to be necessary in MC systems for significant intradonor ( $V^D$ ) or intra-acceptor ( $V^A$ ) couplings [32].

Using the derived treatment, specifically the CPA absorption tensor (12) for the acceptor along with the CPA<sub>DB</sub> emission tensor (14) for the donor, the MCFT rate becomes

$$k \approx \int_{-\infty}^{\infty} \frac{d\omega}{2\pi} \text{Tr} \left[ \mathbf{J}^T \frac{e^{\beta \hbar \omega}}{\text{Tr}[e^{-\beta H^D}]} 2\text{Im} \left( \frac{\langle \mathcal{G}_D^0(\omega) \rangle_g}{\mathbb{1}_M - \mathbf{V}^D \langle \mathcal{G}_D^0(\omega) \rangle_g} \right) \right. \\ \left. \times \mathbf{J} 2\text{Im} \left( \frac{\langle \mathcal{G}_A^0(\omega) \rangle_g}{\mathbb{1}_N - \mathbf{V}^A \langle \mathcal{G}_A^0(\omega) \rangle_g} \right) \right], \quad (17)$$

where  $\mathcal{G}_D^0$  ( $\mathcal{G}_A^0$ ) is a  $M \times M$  ( $N \times N$ ) matrix formed by the Green's functions of the uncoupled monomers constituting the donor (acceptor) aggregate, i.e., defined by Eq. (7b) changing  $B_n \rightarrow D_n(A_n)$ . This rate expression only requires the monomer bath-averaged Green's functions  $\langle \mathcal{G}^0 \rangle_g$ , which includes the system-bath coupling exactly at the monomer level and can be evaluated exactly for a thermal bath (4) or determined experimentally. All influence from electronic coupling is contained in the matrices describing intradonor  $\mathbf{V}^D$ , intra-acceptor  $\mathbf{V}^A$ , and interdonor–acceptor  $\mathbf{J}^{AD}$  couplings, and not restricted to dipole-dipole coupling. The rate (17) is exact up to second order in the intra-aggregate couplings  $\mathbf{V}$  and includes all higher orders approximately.

Figure 2 presents the transfer rate for localized and delocalized donor or acceptor (cases I&II in Ref. [22], respectively) for different reorganization energies  $\lambda$ . Comparison with the exact path-integral calculations shows perfect agreement for the localized case Fig. 2(a), and a slight overprediction for highly delocalized MC systems Fig. 2(b).

The simplicity of our approach [Eq. (17)] allows predicting the transfer rates over a wide range of structural

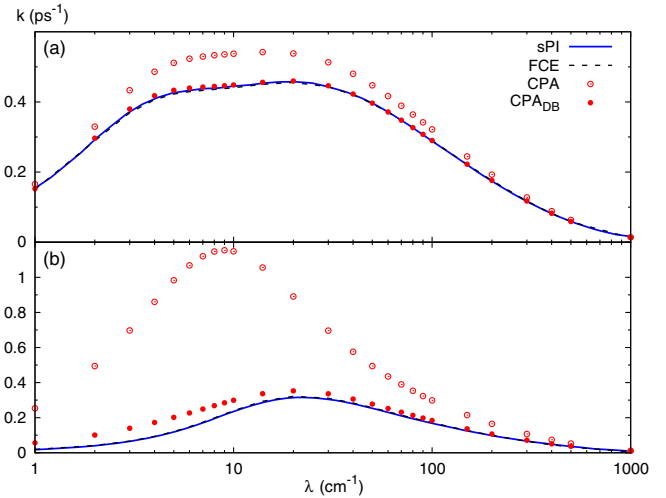


FIG. 2. Energy transfer rate (17) for different bath reorganization energies  $\lambda$  using the developed CPA and CPA<sub>DB</sub> models to calculate absorption (12) and emission (13), (14) tensors for localized (a) and delocalized (b) systems. Comparison with exact SPI results [18] show perfect matching of the CPA<sub>DB</sub> for small electronic coupling (a), and a slight overprediction of the rate for large coupling (b). The error using only CPA comes from overpredicting the emission tensor (cf. Fig. 1). We used  $J_{nm}^{AD} = 10 \text{ cm}^{-1}$ ;  $\lambda^D = \lambda^A$  and  $V_{nn'}^A = V_{mm'}^D = V$ .  $\Delta E_{21}^A = \Delta E_{21}^D = \Delta E_{21}$  are as in Fig. 1.

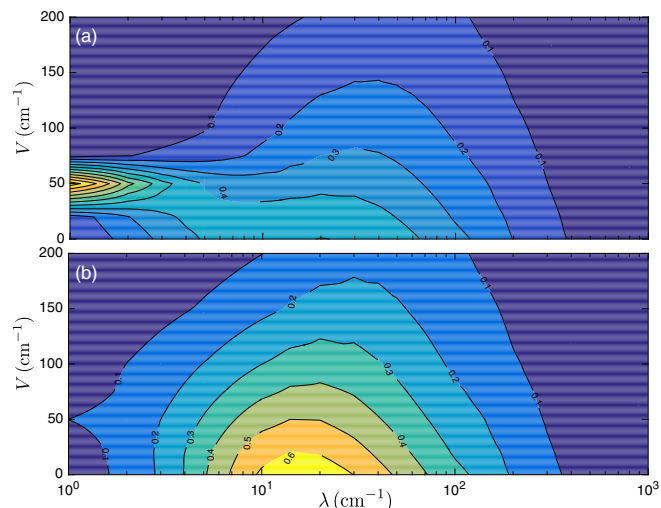


FIG. 3. Contour map of the transfer rate as function of the reorganization energy  $\lambda = \lambda^A = \lambda^D$  and the intra-aggregate coupling strength  $V = V_{nn'}^A = V_{mm'}^D$ . Panel (a) exhibits an optimal intra-aggregate coupling strength around  $V \sim 50 \text{ cm}^{-1}$ , and panel (b) clearly shows the optimal bath coupling. The different behaviors between (a) and (b) stem from different electronic splittings  $\Delta E_{12}^{A(D)}$ , respectively, (a) 100 and (b) 20  $\text{cm}^{-1}$ .

parameters. Figure 3 shows the rate as a function of the reorganization energy and intra-aggregate coupling  $V$  for systems with different electronic splittings  $\Delta E_{21}$ . We clearly see an optimal bath-coupling strength, confirming environment-assisted quantum transport [46]. Interestingly, Fig. 3(a) also exhibits an optimal intra-aggregate coherence ( $V \sim 50 \text{ cm}^{-1}$ ), which was not previously reported. The existence of such optimum depends on the system configuration, as seen from the comparison with rates in a system with smaller energy gap, Fig. 3(b). While this dependance requires further investigation, our results confirm that intra-aggregate couplings can enhance transfer, which is in line with Refs. [32,37,47–49].

In summary, we extended the applicability of the CPA to absorption and emission tensors of multichromophoric systems, and showed accurate results over a surprisingly wide range of structure parameters. This approach now allows for a reliable prediction of the MCFT rate, which reveals that, additionally to optimal environment couplings, the intra-aggregate coupling can be optimized to enhance transport. Our treatment identifies the correction terms, and recovers the classical absorption tensor as a limiting case, suggesting that first-order bath correlations are neglected classically. Our model could be further extended to include the off-diagonal bath coupling, introduced through electronic coupling, using, e.g., the two-particle dynamical CPA [50].

Beyond fast and reliable characterization of multichromophoric complexes, a quantitative relation between physical properties and aggregate structure is established. This straightforward approach is based on spectroscopic measurements and does not require a microscopic Hamiltonian.

It allows us to explore a large space of structure parameters and optimize the aggregate structure based on its optical and transport properties. As such, we anticipate that it will be a relevant tool to experimentally and theoretically describe electronic excitation and excitonic energy transfer.

We thank P. Brumer for interesting discussions on the topic and A. del Campo for comments on the manuscript. We acknowledge funding from the Swiss National Science Foundation (A.C.) and the NSF (Grant No. CHE-1112825).

\*achenu@mit.edu

†jianshu@mit.edu

- [1] S. M. Douglas, H. Dietz, and T. Liedl, *Nature (London)* **459**, 414 (2009); G. Mayer and M. Sarikaya, *Exp. Mech.* **42**, 395 (2002); V. Kos and R. Ford, *Cellular Molecular Life Sci.* **66**, 311 (2009).
- [2] G. Whitesides, J. Mathias, and C. Seto, *Science* **254**, 1312 (1991); S. Zhang, *Nat. Biotechnol.* **21**, 1171 (2003).
- [3] U. Scherf and E. List, *Adv. Mater.* **14**, 477 (2002).
- [4] H. van Amerongen, L. Valkunas, and R. van Grondelle, *Photosynthetic Excitons* (World Scientific, Singapore, 2000).
- [5] R. J. Cogdell, A. T. Gardiner, H. Hashimoto, and T. H. P. Brotsudarmo, *Photochem. Photobiol. Sci.* **7**, 1150 (2008).
- [6] X. Hu, A. Damjanović, T. Ritz, and K. Schulten, *Proc. Natl. Acad. Sci. U.S.A.* **95**, 5935 (1998); G. D. Scholes, T. Mirkovic, D. B. Turner, F. Fassioli, and A. Buchleitner, *Energy Environ. Sci.* **5**, 9374 (2012).
- [7] I. McConnell, G. Li, and G. W. Brudvig, *Chem. Biol.* **17**, 434 (2010).
- [8] F. Spano and C. Rivas, *Annu. Rev. Phys. Chem.* **65**, 477 (2014).
- [9] J.-L. Brédas, J. E. Norton, J. Cornil, and V. Coropceanu, *Acc. Chem. Res.* **42**, 1691 (2009); A. Heeger, *Chem. Soc. Rev.* **39**, 2354 (2010); F. Goubard and F. Dumur, *RSC Adv.* **5**, 3521 (2015).
- [10] K. M. U. Sherf, *Organic Light Emitting Devices: Synthesis, Properties and Applications* (Wiley, New York, 2006).
- [11] E. Orgiu and P. Samorí, *Adv. Mater.* **26**, 1827 (2014).
- [12] Y. Levinson and E. Rashba, *Rep. Prog. Phys.* **36**, 1499 (1973).
- [13] S. Mukamel, *Principles of Nonlinear Spectroscopy* (Oxford University Press, Oxford, 1995), Chap. 8.
- [14] G. D. Mahan, *Many-Particle Physics*, 3rd ed. (Kluwer Academic, Dordrecht, 2000); Chap. 2; Chap. 4.
- [15] V. Broude, E. Rashba, and E. Sheka, *Spectroscopy of Molecular Excitons*, Springer Series in Chemical Physics, edited by V. Goldanskii (Springer, New York, 1985).
- [16] A. S. Davydov, *Theory of Molecular Excitons* (McGraw-Hill, New York, 1962).
- [17] A. Chenu and G. Scholes, *Annu. Rev. Phys. Chem.* **66**, 69 (2015).
- [18] J. M. Moix, J. Ma, and J. Cao, *J. Chem. Phys.* **142**, 094108 (2015).
- [19] A. Ishizaki and G. R. Fleming, *J. Chem. Phys.* **130**, 234111 (2009).

- [20] J. Strümpfer and K. Schulten, *J. Chem. Phys.* **134**, 095102 (2011).
- [21] Y. Jing, L. Chen, S. Bai, and Q. Shi, *J. Chem. Phys.* **138**, 045101 (2013).
- [22] J. Ma and J. Cao, *J. Chem. Phys.* **142**, 094106 (2015).
- [23] T. Renger and V. May, *Phys. Rev. Lett.* **84**, 5228 (2000).
- [24] T. Renger and R. A. Marcus, *J. Chem. Phys.* **116**, 9997 (2002).
- [25] L. Banchi, G. Costagliola, A. Ishizaki, and P. Giorda, *J. Chem. Phys.* **138**, 184107 (2013).
- [26] T.-C. Dinh and T. Renger, *J. Chem. Phys.* **142**, 034104 (2015).
- [27] A. Gelzinis, D. Abramavicius, and L. Valkunas, *J. Chem. Phys.* **142**, 154107 (2015).
- [28] T. Förster, in *Modern Quantum Chemistry*, edited by O. Sinanoğlu (Academic, New York, 1965), Vol. III, p. 93.
- [29] H. Sumi, *J. Phys. Chem. B* **103**, 252 (1999).
- [30] K. Mukai, S. Abe, and H. Sumi, *J. Phys. Chem. B* **103**, 6096 (1999).
- [31] G. D. Scholes, *Annu. Rev. Phys. Chem.* **54**, 57 (2003).
- [32] S. Jang, M. D. Newton, and R. J. Silbey, *Phys. Rev. Lett.* **92**, 218301 (2004).
- [33] G. D. Scholes and G. R. Fleming, *J. Phys. Chem. B* **104**, 1854 (2000).
- [34] H. Sumi, *J. Phys. Soc. Jpn.* **36**, 770 (1974).
- [35] H. Kuhn, *J. Chem. Phys.* **53**, 101 (1970).
- [36] R. R. Chance, A. Prock, and R. Silbey, *J. Chem. Phys.* **62**, 2245 (1975).
- [37] E. N. Zimanyi and R. J. Silbey, *J. Chem. Phys.* **133**, 144107 (2010).
- [38] S. Duque, P. Brumer, and L. A. Pachón, *Phys. Rev. Lett.* **115**, 110402 (2015).
- [39] J. Ma, J. M. Moix, and J. Cao, *J. Chem. Phys.* **142**, 094107 (2015).
- [40] N. V. Kampen, *Stochastic Processes in Physics and Chemistry* (Elsevier, New York, 2007).
- [41] See Supplemental Material at <http://link.aps.org/supplemental/10.1103/PhysRevLett.118.013001> for the link between the CPA and the classical approach and further comparison with FCE results.
- [42] M. Yang, *J. Chem. Phys.* **123**, 124705 (2005).
- [43] T. Mančal, V. Balevičius, and L. Valkunas, *J. Phys. Chem. A* **115**, 3845 (2011).
- [44] J. Cao and B. J. Berne, *J. Chem. Phys.* **99**, 6998 (1993).
- [45] J. M. Moix, Y. Zhao, and J. Cao, *Phys. Rev. B* **85**, 115412 (2012).
- [46] V. Chorošajev, A. Gelzinis, L. Valkunas, and D. Abramavicius, *J. Chem. Phys.* **140**, 244108 (2014).
- [47] Y. C. Cheng and R. J. Silbey, *Phys. Rev. Lett.* **96**, 028103 (2006).
- [48] K. Kim, M.-S. Chang, S. Korenblit, R. Islam, E. E. Edwards, J. K. Freericks, G.-D. Lin, L.-M. Duan, and C. Monroe, *Nature (London)* **465**, 590 (2010).
- [49] J. Wu, R. J. Silbey, and J. Cao, *Phys. Rev. Lett.* **110**, 200402 (2013).
- [50] R. Friesner and R. J. Silbey, *Chem. Phys. Lett.* **93**, 107 (1982); R. E. Lagos and R. A. Friesner, *Phys. Rev. B* **29**, 3045 (1984).