

MIT Open Access Articles

*Complexion-mediated martensitic
phase transformation in Titanium*

The MIT Faculty has made this article openly available. **Please share** how this access benefits you. Your story matters.

Citation: Zhang, J., C. C. Tasan, M. J. Lai, A. -C. Dippel, and D. Raabe. "Complexion-Mediated Martensitic Phase Transformation in Titanium." Nature Communications 8 (February 1, 2017): 14210.

As Published: <http://dx.doi.org/10.1038/ncomms14210>

Publisher: Nature Publishing Group

Persistent URL: <http://hdl.handle.net/1721.1/110169>

Version: Final published version: final published article, as it appeared in a journal, conference proceedings, or other formally published context

Terms of use: Creative Commons Attribution 4.0 International License



ARTICLE

Received 28 May 2016 | Accepted 29 Nov 2016 | Published 1 Feb 2017

DOI: 10.1038/ncomms14210

OPEN

Complexion-mediated martensitic phase transformation in Titanium

J. Zhang^{1,2}, C.C. Tasan³, M.J. Lai¹, A.-C. Dippel⁴ & D. Raabe¹

The most efficient way to tune microstructures and mechanical properties of metallic alloys lies in designing and using athermal phase transformations. Examples are shape memory alloys and high strength steels, which together stand for 1,500 million tons annual production. In these materials, martensite formation and mechanical twinning are tuned via composition adjustment for realizing complex microstructures and beneficial mechanical properties. Here we report a new phase transformation that has the potential to widen the application window of Ti alloys, the most important structural material in aerospace design, by nanostructuring them via complexion-mediated transformation. This is a reversible martensitic transformation mechanism that leads to a final nanolaminate structure of α'' (orthorhombic) martensite bounded with planar complexions of athermal ω ($a\text{-}\omega$, hexagonal). Both phases are crystallographically related to the parent β (BCC) matrix. As expected from a planar complexion, the $a\text{-}\omega$ is stable only at the hetero-interface.

¹Max-Planck-Institut für Eisenforschung, Max-Planck-Strasse 1, 40237 Düsseldorf, Germany. ²State Key Laboratory for Mechanical Behavior of Materials, Xi'an Jiaotong University, Xi'an 710049, China. ³Department of Materials Science and Engineering, Massachusetts Institute of Technology, 77 Massachusetts Avenue, Cambridge, Massachusetts 02139, USA. ⁴Deutsches Elektronen-Synchrotron DESY, Notkestrasse 85, D-22607 Hamburg, Germany. Correspondence and requests for materials should be addressed to J.Z. (email: jian.zhang@xjtu.edu.cn) or to C.C.T. (email: tasan@mit.edu) or to D.R. (email: d.raabe@mpie.de).

Typical Ti alloys contain primarily phases with hexagonal lattice structure, the so-called α -Ti¹. Alloying can be used to stabilize the high-temperature body-centred cubic titanium phase also at ambient temperatures. These so-called β -titanium alloys have become a completely new material class due to their exceptional mechanical properties, namely ultralow elastic stiffness and gum-type deformation behaviour². These are unique advantages, both for biomedical and aerospace applications, which no other alloy class can deliver. The underlying transformation mechanisms occurring in these alloys, which are held responsible for some of their key mechanical properties, are however not understood.

The new transformation phenomenon is observed in β -titanium alloys of Ti-23Nb-0.7Ta-2Zr, at.%. This system is a variation of the gum metal², which has drawn significant interest due to its unusual mechanical properties (low elastic stiffness and nearly hardening-free plasticity) and various deformation mechanisms that have been controversially reported as possible underlying reasons for such behaviour (bulk shearing^{3–6}, stress-induced α'' martensitic phase transformation^{4,7,8}, dislocation plasticity^{9,10}, deformation twinning^{11,12}, ω -phase transformation¹³ and strain glass transition¹⁴). The β -phase's instability, when exposed to mechanical loads, evidently plays a critical role in such gum alloys^{15,16}; therefore, we aim at understanding the phase transformations in this system better. The observed mechanism involves a so far undiscovered coupling of several athermal phase transition steps at the interface, namely, $\beta \rightarrow \alpha''$ martensitic phase transformation and $\beta \rightarrow a-\omega$ transition, creating planar complexions at the α''/β interfaces as well as nano-layered martensitic twinning (Fig. 1). It results in a final nanolaminate composite microstructure throughout the bulk Ti gum metal.

A planar complexion^{17–28} is referred to a metastable interfacial state confined and stabilized in the interfaces of the adjacent phases²⁰. It can adopt states that have distinct interfacial structures and/or composition profiles correlated with local minima in free energy²¹ and may undergo reversible structural transitions when the thermodynamic conditions vary^{19,27}. The complexions known so far mostly appear at grain boundaries and

at planar hetero-interfaces, and originate from diffusional transitions²⁷. In contrast, the new $a-\omega$ planar complexion observed in this study is induced by a diffusionless martensitic transformation ($\beta \rightarrow \alpha''$), that is, it forms through a diffusionless process. The confinement and reversibility of this interface nanolaminate, consisting of adjacent orthorhombic α'' , hexagonal ω and twinned α'' nanolayers inside the host β -matrix realize a planar complexion state. A new transformation-induced planar complexion of ω -structure is found. It possesses the athermal character and reversibility through the reversible $\beta \rightarrow a-\omega$ transition. It forms from the β -matrix to accommodate the interfacial strain of α''/β -phase boundaries during $\beta \rightarrow \alpha''$ martensitic transition and further mediates the transition by influencing the twinning mode, and results in a final nanolaminate composite microstructure throughout the bulk Ti alloy on cooling.

In what follows, employing various experimental tools (for example, high-resolution transmission electron microscopy (HRTEM), *in-situ* synchrotron X-ray diffraction (SXRD), atom probe tomography (APT) and so on), we provide evidence of the structure, the reversibility and athermal nature of the individual interface features and transformation phenomena involved.

Results

Characterization of the phase transformation. We start the analysis with the characterization of the phase transformation occurring during quenching (Fig. 2). Figure 2a shows a one-dimensional (1D) SXRD pattern integrated over the two-dimensional (2D) SXRD pattern collected on an area detector from the as-quenched state. It indicates that the high-temperature β -phase partially transforms to α'' martensite and $a-\omega$ upon quenching. Phase fractions are estimated employing Rietveld refinement of the diffractogram (Fig. 2a) to be 2.27, 76.55 and 21.18 vol.% for $a-\omega$, α'' and retained β , respectively (fitting results are presented in Supplementary Fig. 1). The lattice parameters of each structure are also calculated from the SXRD pattern (listed in Supplementary Table 1). Interestingly, the differential scanning calorimetry (DSC) curve (inset of Fig. 2a) shows no thermal peaks upon heating/cooling between 25 and 300 °C, even at the $a-\omega$ and α'' reverse transformation finishing temperatures (200 and 245 °C, determined by *in-situ* SXRD results presented later in Fig. 4). The absence of DSC peaks, despite the presence of large volume fractions of α'' and $a-\omega$ at room temperature, suggests that both transformation processes take place over a large temperature range, that is, they have a diffuse character.

Figure 2b shows a scanning electronic microscopy-backscatter electrons (SEM-BSE) micrograph of a $[0-11]_{\beta}$ grain (the following lattice correspondences are used in the present paper: $\beta \rightarrow \alpha''$: $[100]_{\alpha''} - [100]_{\beta}$, $[010]_{\alpha''} - [011]_{\beta}$, $[001]_{\alpha''} - [0-11]_{\beta}$; $\beta \rightarrow a-\omega$: $[11-20]_{a-\omega} - [0-11]_{\beta}$, $[0001]_{a-\omega} - [-111]_{\beta}$). Two sets of edge-on α'' twins are observed along $\{-220\}_{\alpha''}/\{-211\}_{\beta}$, indicating that the two edge-on $\{-211\}_{\beta}$ planes (that is, $(-211)_{\beta}$ and $(211)_{\beta}$) around the $[0-11]_{\beta}$ zone axis can both serve as twinning plane for α'' martensite (that is, $(-220)_{\alpha''}$ and $(220)_{\alpha''}$). In Fig. 2c, TEM-bright-field image shows fine α'' twins with $(-220)_{\alpha''}/(-211)_{\beta}$ twinning plane. For understanding the present twinning mode, the selected area diffraction pattern (SADP) from the $[0-11]_{\beta}/[001]_{\alpha''}/[11-20]_{a-\omega}$ zone axis is presented in Fig. 2d. The $\{110\}_{\alpha''}$ faint spots (shuffle spots), which are more clearly visible in the 2D SXRD patterns shown later, indicate the existence of the α'' martensite. Diffuse scatterings with intensity concentration at $1/3\{211\}_{\beta}$ positions are the characteristics of the ω structure. However, it is unlike the typical diffraction pattern of thermally induced $a-\omega$ (formed during quenching without the

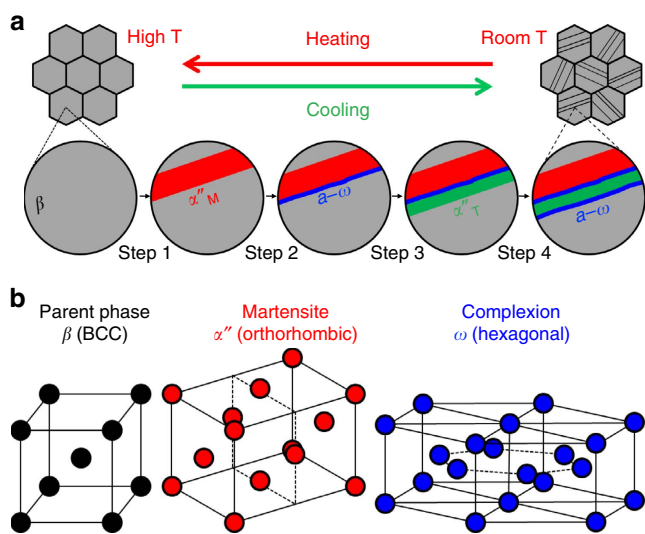


Figure 1 | Schematic illustration of the phase transformations and crystal structures of the phases involved. (a) Schematic illustration for complexion-mediated martensitic phase transformation in a β -Ti alloy matrix (from left to right): Step 1, formation of α'' -matrix; Step 2, formation of first $a-\omega$ planar complexion; Step 3, formation of α'' -twin; and Step 4, formation of second $a-\omega$ planar complexion. (b) Crystal structures of β parent phase, α'' martensite and ω complexion.

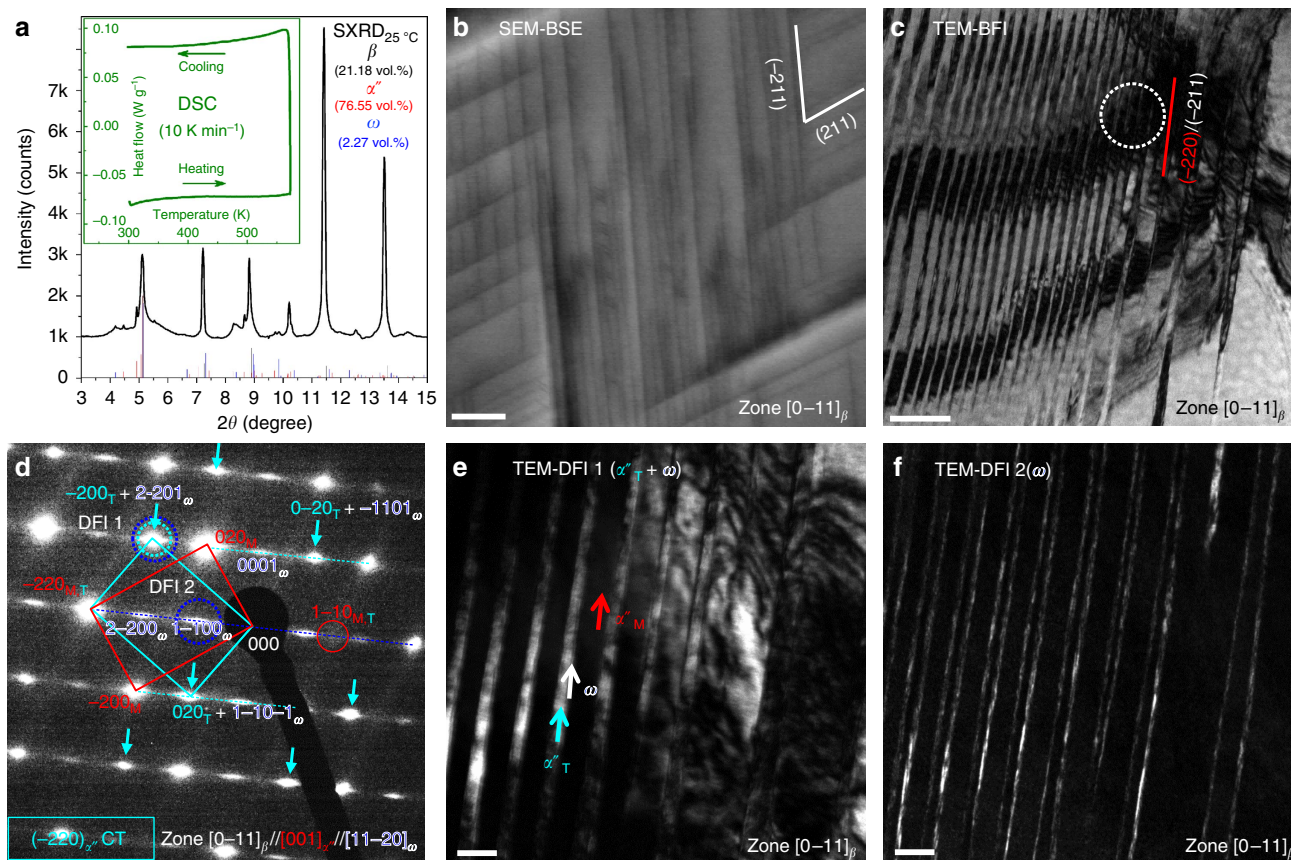


Figure 2 | Characterization of the complex-mediated martensitic phase transformation. (a) One-dimensional SXR D pattern, with the DSC inset showing no clear thermal peaks. (b) SEM-BSE micrograph (scale bar, 2 μm) from a $[0-11]_{\beta}$ grain shows two sets of $\{220\}_{\alpha''}$ CTs (bulk sample). (c) TEM-bright-field image (BFI) shows a set of CT (scale bar, 100 nm). (d) Corresponding SADP from the area encircled in c. (e, f) DFIs (TEM-DFI 1 and 2) from the overlapping spot (cyan and blue dotted circles in d) and from the $a-\omega$ spot (blue circle in d), which indicate that $a-\omega$ planar complexions only locate along the CT boundaries (both scale bars, 20 nm). CT, compound twin.

assistance of an athermal $\beta \rightarrow \alpha''$ transformation), where two sets of $1/3\{211\}_{\beta}$ reflections are present and of similar intensity^{29,30}. Only one set is present here and, moreover, half of the $1/3\{211\}_{\beta}$ spots have much higher intensity than the others as indicated by cyan arrows (Fig. 2d). To understand the origin of the different intensities of the $1/3\{211\}_{\beta}$ spots, two dark-field images (DFIs), referred to as TEM-DFI 1 and DFI 2, were taken by using one brighter and one weaker $1/3\{211\}_{\beta}$ spot as shown in Fig. 2e, f, respectively. The TEM-DFI 1 in Fig. 2e shows that one of two martensite laths is bright and the other is dark. The boundaries between them are also bright but in much lower intensity. This indicates that both the bright laths and the boundaries contribute to the brighter $1/3\{211\}_{\beta}$ spots. More interestingly, in TEM-DFI 2 (Fig. 2f), only the boundaries are bright. Therefore, the TEM-DFIs reveal that the brighter $1/3\{211\}_{\beta}$ spots originate from both α'' twin (α''_T) and $a-\omega$, whereas the ones of lower intensity are formed solely from $a-\omega$ along the twin boundaries. With this, it can be concluded that the SADP in Fig. 2d reveals higher intensity $1/3\{211\}_{\beta}$ spots and primary spots correspond to a $\{-220\}_{\alpha''}$ compound twin (CT). It is noteworthy that the $\{-220\}_{\alpha''}$ CT is the only twinning mode found in all TEM observations in this study. This is in contrast with binary Ti-Nb, where the major twinning mode of α'' is $\{111\}_{\alpha''}$ type I twinning and no CTs were found^{30,31}. Moreover, the TEM-DFIs reveal that $1/3\{211\}_{\beta}$ spots originate from the preferentially formed $a-\omega$ phase along the pure shear direction $\{-211\} < 111 >_{\beta}$ of the $\beta \rightarrow \alpha''$ transformation³². It indicates that the formation of $a-\omega$ is induced by the $\beta \rightarrow \alpha''$ transformation. As a result, a nanolaminate

microstructure is created, composed of sequentially arranged layer-by-layer α'' CT bounded with $a-\omega$ films, which resembles a planar complexation state^{20,27}.

Atomic configuration of α'' CT and $a-\omega$ planar complexion.

Figure 3 shows HRTEM images from the $[0-11]_{\beta}$ zone axis, providing the atomic configuration of the α'' CT and $a-\omega$ planar complexion. Figure 3a shows a HRTEM where several successive nanolayers of α'' CT bounded by $a-\omega$ planar complexions were captured. The corresponding fast Fourier transform (FFT) pattern is shown in Fig. 3a (inset), which is almost identical to the SADP in Fig. 2d. An inverse FFT image of higher magnification (from the green zone in Fig. 3a) is shown in Fig. 3b, c, focusing on the internal structure of α'' CT and $a-\omega$, respectively. Figure 3b shows the atomic configuration of α'' CT, where red/cyan lines along the $(020)_{M,T}$ planes reveal the deviation of the $(020)_{M,T}$ lattice planes across the $a-\omega$ layer, which also indicates the α'' strain accommodation direction by $a-\omega$ as denoted by thicker red/cyan arrows (with white background). The lattice spacings in the centre of α''_M and α''_T are $d_{(0-20)_{M,T}} = 0.24$ nm and $d_{(200)_{M,T}} = 0.16$ nm in agreement with the values obtained from SXR D (Supplementary Table 1). Furthermore, analysis of one $a-\omega$ zone has been performed, as shown in Fig. 3c. As plotted in the inset, the distance between two middle atoms of $a-\omega$ was measured and plotted with respect to the atomic layers along the purple lines. The following structures can be identified: $\beta \rightarrow \text{IC}_{a-\omega}$ (incommensurate ω) $\rightarrow \text{C}_{a-\omega}$ (commensurate ω)³³⁻³⁵. This sequence provides the first clear perception revealing the

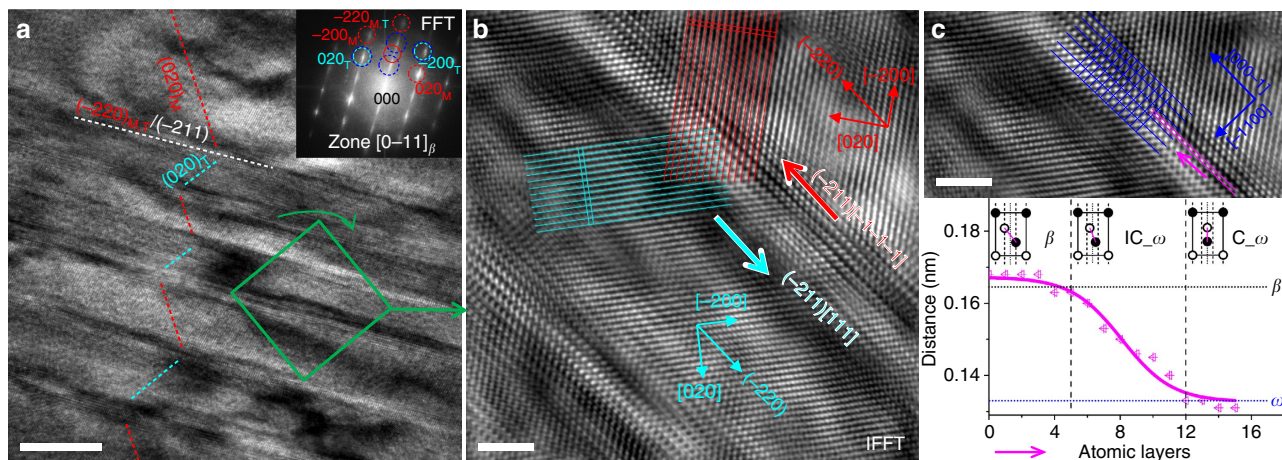


Figure 3 | HRTEM images of α'' CT and $a-\omega$ planar complex. (a) Low-magnification HRTEM image; the inset shows the corresponding FFT diffraction pattern (scale bar, 10 nm). (b) Atomic configuration of α'' CT, where red and cyan arrows with white background represent the shear and accommodation directions of α'' matrix and its twin during transformation. (c) Analysis of atomic configuration within $a-\omega$ planar complex: $\beta \rightarrow IC_\omega$ (incommensurate ω) $\rightarrow C_\omega$ (commensurate ω), where the inset is the plot of atom distance between the middle atoms along the purple lines. Scale bars, 2 nm (b,c).

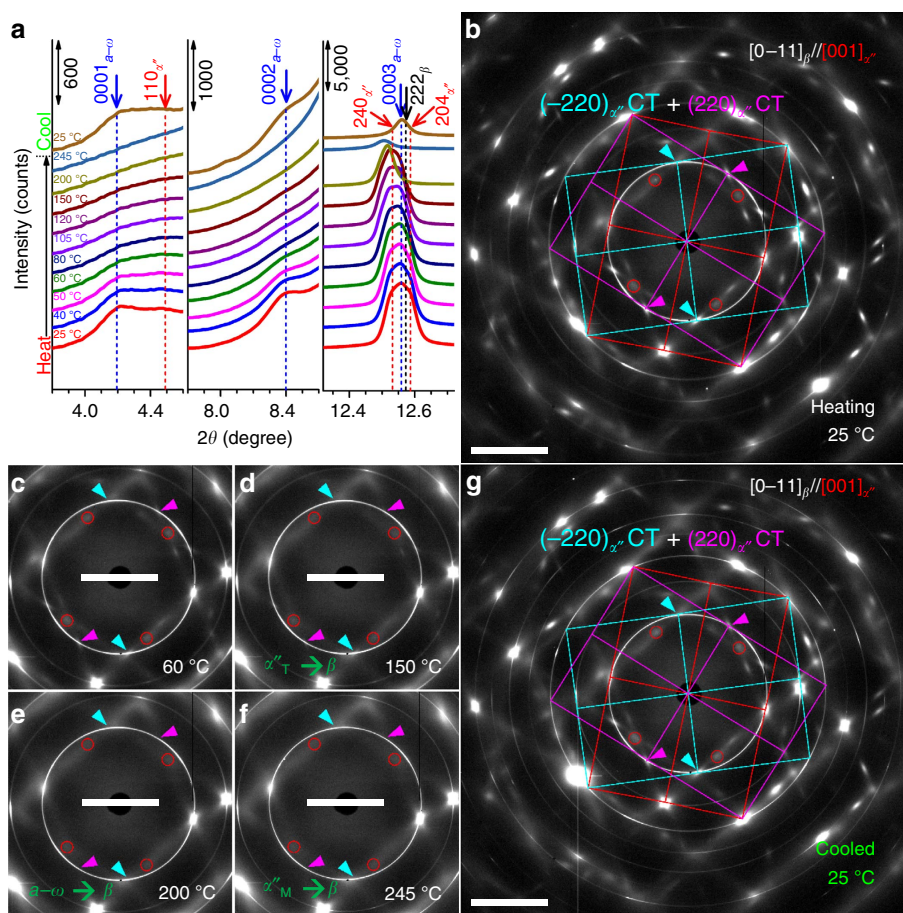


Figure 4 | Results of *in-situ* SXRD heating/cooling experiments. (a) Line profiles integrated from 2D SXRD patterns. (b-g) Representative 2D SXRD patterns at 25, 60, 150, 200, 245 °C (during heating) and 25 °C (after cooling), respectively. Scale bar, 5°.

individual steps contributing to the $\beta \rightarrow a-\omega$ transformation mechanism. Consequently, the C_ω and IC_ω zones can be outlined in the $a-\omega$ planar complex regions as shown in Supplementary Fig. 2. On the boundary of the C_ω zones, $1/2\langle 111 \rangle \{211\}$ dislocations are identified. Moreover, one segment of a twin boundary without $a-\omega$ complex is found between the two complex regions outlined, where the

interfacial stress falls below a critical value. The histogram of the $a-\omega$ planar complex-width distribution is shown in Supplementary Fig. 3. It has been calculated based on TEM-DFI 2 (Fig. 2f) for better statistics.

This observation also provides another evidence that the $a-\omega$ planar complex is induced by a shear stress exerted by the α'' transformation, as this shear stress along $\{-211\}\langle 111 \rangle_\beta$

(the pure shear of $\beta \rightarrow \alpha''$ transformation) has a perfect lattice correspondence for promoting the $\beta \rightarrow a-\omega$ transformation, which will be explained further below. Furthermore, $a-\omega$ plays a role in accommodating α'' martensitic twins as manifested by a pair of remaining planar strain feature on both sides of the $a-\omega$ layers (Fig. 3b). Hence, a new complexion/second-phase accommodation mechanism is identified in martensitically transforming materials: the interfacial stress of $\beta \rightarrow \alpha''$ is accommodated by triggering the formation of planar complexion through $\beta \rightarrow a-\omega$ transformation.

Reversibility of the α'' CT and $a-\omega$ planar complexion. The results of the *in-situ* heating/cooling SXR D experiments shown in Fig. 4 provide another direct evidence for the co-existence and the reversibility of α'' CT and $a-\omega$ complexion. Figure 4a shows three segments of the 1D SXR D patterns integrated from the 2D SXR D patterns. Some representative 2D SXR D patterns are shown in Fig. 4b–g. In Fig. 4a, gradual disappearance of the ω and α'' reflections within 2θ ranges of 3.8° to 4.6° and 7.8° to 8.6° during heating, and their restoration after cooling to 25°C prove the reversibility of $\beta \rightarrow a-\omega$ and $\beta \rightarrow \alpha''$ transformations during heating/cooling. Another broad peak within the 2θ range of 12.3° to 12.7° consists of $(240)_{\alpha''}$, $(0003)_{\omega}$, $(222)_{\beta}$ and $(204)_{\alpha''}$ reflections. During heating, the overlapping peaks become narrower at 200°C , indicating full reversion of $a-\omega$ to β around 200°C , as one $a-\omega$ peak is located at higher 2θ . This is also revealed more clearly in the analysis of 2D SXR D patterns, presented in the following section. When the temperature is further increased, the peak becomes even smaller at 245°C , which is the reverse transformation finishing temperature of $\alpha'' \rightarrow \beta$. Hence, at 245°C , a single β -phase is achieved, which gains even more solid proof through the 2D SXR D pattern captured at 245°C (Fig. 4e).

Next, the 2D SXR D patterns in Fig. 4b–g are further analysed, to provide more insights on the transformation kinetics and overall sequence of $\alpha''_{\text{T}} \rightarrow \beta$, $a-\omega \rightarrow \beta$ and $\alpha''_{\text{M}} \rightarrow \beta$ transitions. Based on the grain identification performed on the 2D SXR D pattern at 245°C (single β -phase), as presented in the Supplementary Fig. 4, diffraction intensities in the current *in-situ* SXR D pattern originated mainly from three grains: two of them are $[0-11]_{\beta}$ and the other one is $[012]_{\beta}$. In the following, we focus on the diffraction pattern of one $[0-11]_{\beta}$ grain with near on-pole condition, with its diffraction pattern outlined in green in Supplementary Fig. 4.

In Fig. 4b, a 2D SXR D pattern obtained at 25°C (before heating) is shown and the primary diffraction spots are linked by red lines to indicate that the grain is mainly in α'' martensite state.

Additional to the primary spots, extra spots at $1/2\{211\}_{\beta}$ and $1/3\{211\}_{\beta}$ locations are also found. Based on the SADP analysis shown in Fig. 2d, two sets of $\{-220\}_{\alpha''}$ CT diffraction spots from the $[001]_{\alpha''} // [0-11]_{\beta}$ zone axis are identified as marked in cyan and magenta, which is consistent with the SEM-BSE image in Fig. 2b. The $(020)_{\alpha''}$ twin spots of each CT are indicated by cyan and magenta arrows (pointing to the $\langle 111 \rangle_{\beta}$ shear direction of $\beta \rightarrow \alpha''$ transformation), respectively; in contrast, $\{1-10\}_{\alpha''}$ spots caused by $\{0-11\}\langle 011 \rangle_{\beta}$ shuffling associated with the α'' transformation are encircled (red). One noticeable difference between the diffraction patterns of TEM (Fig. 2d) and SXR D (Fig. 4b) is the absence of $(1-100)_{\omega}$ and $(2-200)_{\omega}$ spots in the SXR D pattern. These signals are actually ‘forbidden’ diffraction spots in the hexagonal lattice structure. Their appearance in TEM SADP (Fig. 2d) is due to the double diffraction effect³⁶. In the 2D SXR D pattern, these spots disappear for the following two reasons. (1) The SXR D beamline used for this study has a much larger wavelength ($\lambda = 0.020727\text{ nm}$) as compared with TEM operated at 200 kV ($\lambda = 0.00251\text{ nm}$) and hence a much smaller radius of the Ewald sphere, which leads to lower double diffraction intensity values. (2) The thickness of the samples used in SXR D is $\sim 1\text{ mm}$. In contrast, the TEM thin foils used in this work are below 200 nm in thickness. Therefore, in the SXR D experiments, double diffraction effects drop to near-zero intensity before penetrating the entire sample, different than in corresponding TEM diffraction experiments. For clarity, the key diagrams to this complex diffraction pattern are provided in Supplementary Fig. 5, which consists of two overlapping diffraction patterns from two possible edge-on α'' CT: $(-220)_{\alpha''}$ CT and $(-2-20)_{\alpha''}$ CT. During heating, the intensity of the extra spots due to α'' CT and $a-\omega$ decreases gradually (Fig. 4c), as can be seen more clearly in Supplementary Movie 1. In Fig. 4d, the disappearance of twin spots (that is, the intensity of arrow-pointed spots becomes the same as that of the $(0001)_{\omega}$ $a-\omega$ spots at the smallest 2θ angle) at 150°C indicates that all α''_{T} transforms reversely into β first around 150°C . The 2D SXR D pattern taken at 200°C (Fig. 4e) shows the disappearance of ω spots, indicating that the $a-\omega$ fully reverses back to β at around 200°C . When the sample is further heated up, the 2D SXR D pattern at 245°C (Fig. 4f) reveals that the $(1-10)_{\alpha''}$ shuffle spot vanishes, indicating that α'' fully transforms back to β . After cooling to 25°C , the 2D SXR D pattern in Fig. 4g shows that the original diffraction pattern (Fig. 4b) is nearly fully restored. This *in-situ* heating/cooling SXR D analysis proves the complete reversibility of α'' CT and its associated $a-\omega$ complexion.

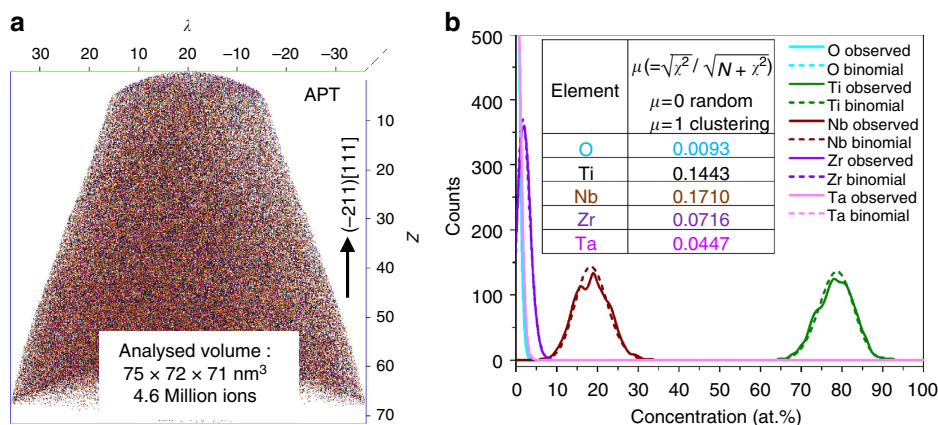


Figure 5 | APT analysis. (a) APT elemental map displays the atomic-scale local composition. (b) Frequency distribution curves for Ti, Nb, Ta, Zr and O atoms obtained from the APT data shown in a; binomial distributions for average solute contents are also shown for comparison, which stands for the ideal distribution in a homogenized alloy.

The results mentioned above also suggest that the $\{-220\}_{\alpha''}$ CT-induced $\beta \rightarrow a-\omega$ transformation is martensitic, hence without composition change. To confirm this, APT analyses were carried out on tips that were focused ion beam (FIB) milled from a $\{111\}_{\beta}$ grain. The cluster analysis reveals that all alloying elements are distributed homogeneously, indicating an athermal transformation mechanism (Fig. 5).

Discussion

To elucidate the underlying mechanisms of the $a-\omega$ planar complexion mediated transformation, a schematic representation of the transformation process on cooling is presented in Fig. 6. When the $\beta \rightarrow \alpha''$ transformation starts (Step 1), the $(-211)[-1-1-1]_{\beta}$ shear stress at the lower interface of the α''_M and β is built up as indicated by the red arrows. Simultaneously, confining back-stresses from the surrounding untransformed β matrix are built up, acting against the shear direction of α''_M , the extent of which is indicated by the height of blue energy bands on both sides. These two stress components act in opposite directions, creating a compressive stress on the $(-211)_{\beta}$ plane along the effective axis $[111]_{\beta}$ of the $a-\omega$ formation^{35,37}. Growth of α'' stops and $a-\omega$ forms when the stress reaches a critical value required for inducing $\beta \rightarrow a-\omega$ (as illustrated in Supplementary Fig. 6a,b). This marks Step 2, the occurrence of which indicates that $a-\omega$ is thermodynamically not stable but can be stabilized under the assistance of stress. Formation of the $a-\omega$ planar complexion accommodates the strain (evident in Fig. 3b) and hence decreases the interfacial stress. When the local stress drops to values below the critical value, the growth of the $a-\omega$ layer stops, as the $a-\omega$ region is still thermodynamically unfavourable. This is also the reason why the occurrence of the $\beta \rightarrow a-\omega$ transition is strictly confined to the interface region (forming a planar complexion of a size around 2 nm) and not viable outside of it. As the $a-\omega$ transformation produces shear along the $(-211)[-1-1-1]_{\beta}$ component, α''_T of the $\{-220\}_{\alpha''}/\{-211\}_{\beta}$ compound twinning character is formed (Step 3) due to the requirement of interface energy minimization. The second

$a-\omega$ layer forms (Step 4) also because of a planar compressive stress accumulated by the $\beta \rightarrow \alpha''_T$ transition. However, the formation of the α''_T involves very large shear stresses (due to 35% twinning shear strain) along $(-211)[-1-1-1]_{\beta}$ and hence the critical stress of the transformation $\beta \rightarrow a-\omega$ is reached 'faster' (in fewer atomic layers) than that caused by α''_M in Step 1. Moreover, the formation of the second $a-\omega$ layer stops the further growth of the α''_T layer. As a result, the width of the α''_T layer should be much thinner than that of the α''_M layer, which is consistent with the presented TEM observations (Fig. 2e). The accommodation potential of both $a-\omega$ layers are the same and therefore the two $a-\omega$ layers should have similar thickness (evident in Fig. 2f). These four individual structural steps are considered as one transformation event, mediated by a planar complexion state at the interface. With further cooling, the final nanolaminate microstructures can be formed after repeating the four-step transformation event, as illustrated in Supplementary Fig. 6c,d. Two more SEM-BSE images in Supplementary Fig. 7 provide a larger field of view of such nanolaminate microstructures from both $[0-11]_{\beta}$ and $[111]_{\beta}$ orientations. Such a nanoscale successive transformation process, when progressing over a wider temperature range, shows no abrupt thermal signal as is evident from the DSC measurement (inset in Fig. 2a). This phenomenon is similar to the disappearance of the DSC peak observed during the strain glass transition³⁸. Based on the above discussion, it is quite clear that the formation of $a-\omega$ planar complexions is to accommodate $\beta \rightarrow \alpha''$ interfacial strain and also mediates the $\beta \rightarrow \alpha''$ transition to possess $\{-220\}_{\alpha''}$ compound twinning character. It results in a final nanolaminate composite microstructure throughout the bulk Ti gum metal.

In conclusion, a new reversible complexion-mediated martensitic phase transformation phenomenon has been discovered in titanium, which is mediated by a planar complexion state. It involves the joint formation of the $\{-220\}_{\alpha''}/\{-211\}_{\beta}$ α'' martensitic CT and the accommodating $a-\omega$ planar complexion. TEM analysis shows that the two transformation steps are coupled, constituting a complexion interfacial state: the $a-\omega$ transformation is induced by a shear stress initiated by pure shear $\{-211\} \langle 111 \rangle_{\beta}$ during $\beta \rightarrow \alpha''$, which has perfect lattice correspondence for inducing the $a-\omega$ complexion. *In-situ* heating/cooling SXR and APT prove that both α'' and $a-\omega$ transformations are reversible and martensitic. This coupled and complexion-mediated transformation mechanism enables novel nanostructuring and hence strengthening opportunities for Ti alloys.

Methods

Alloy synthesis and heat treatment. A reversible complexion-mediated martensitic phase transformation is observed in the oxygen-free gum metal (Ti-23Nb-0.7Ta-2Zr, at.%) upon quenching. The actual composition of the alloy was determined by chemical analysis as Ti-23Nb-0.67Ta-1.96Zr-0.26O (at.%). The chemical composition was tested by inductively coupled plasma optical emission spectrometry and infrared absorption spectroscopy measurements. The melt of the ingot was produced under argon atmosphere in an arc-melting furnace from pure elements, cast into a copper mould, homogenized at 1,200 °C for 4 h and then furnace cooled. Smaller samples of the alloy were further annealed in vacuum quartz tubes for 1 h at 1,000 °C and subsequently water quenched as the tube was broken simultaneously, to avoid iso- ω formation³⁹.

Synchrotron measurements. SXR measurements were performed on the bulk samples with a thickness of ~ 1 mm, at beam-line P02.1 at PETRA III (DESY Hamburg, Germany) with the wavelength $\lambda = 0.020727$ nm⁴⁰. Beam size used was $500 \times 500 \mu\text{m}^2$. The 2D SXR patterns were collected on an area detector (PerkinElmer XRD1621). Azimuthal integration was performed using the software FIT2D and the obtained 1D SXR patterns were then analysed by Rietveld refinement using MAUD⁴¹. The 1D SXR pattern in Fig. 2a indicates the co-existence of α'' and $a-\omega$ phases, and a small volume of remaining β -phase. The $a-\omega$ reflections are quite diffuse/broad and low in intensity. The patterns are rather complex, owing to the overlap with the α'' and β peaks, which will fail fitting or

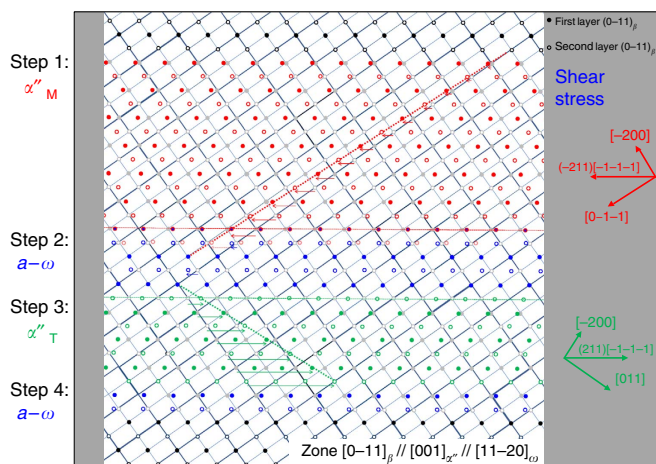


Figure 6 | Schematic representation of atomic movements associated with the complexion-mediated transformation upon cooling. Open and solid circles represent the first and second layers of atoms viewed from $[0-11]_{\beta}$ orientation. Colour in the figure: black to β -phase; blue to $a-\omega$; red to α'' -matrix; green to α'' -twin. For better clarity, only β -indexes are used here. The transformation starts from the top and propagates to the bottom during cooling as divided into four steps: Step 1 (formation of α'' -matrix), Step 2 (formation of first $a-\omega$ layer), Step 3 (formation of α'' -twin) and Step 4 (formation of second $a-\omega$ layer).

lead to wrong fitting results. Hence, the α - ω reflections were not included during the first-step Rietveld refinement (shown in Supplementary Fig. 1a), through which a successful fitting ($R_w = 9.0\%$) was reached and the volume fractions of α'' and remaining β -phase were determined to be 82 and 18 vol.%, respectively. By using first step refinement as the starting point, second step Rietveld refinement with α - ω reflections added, converged well ($R_w = 7.84\%$), as presented in Supplementary Fig. 1b. From this analysis we suggest the room temperature phase fractions for α - ω , α'' and β as 2.27, 76.55 and 21.18 vol.%, respectively. *In-situ* heating/cooling SXRD experiments were carried out under the same condition with a home-made heating stage as illustrated in Supplementary Fig. 8.

Physical and microstructural characterization. The DSC measurement was performed in a Mettler Toledo DSC1 at heating/cooling rate of $10^\circ\text{C min}^{-1}$. The sample was first heated up from room temperature (25°C) to 300°C and subsequently cooled down to 25°C . TEM samples were electro-polished (Struers Tenupol 5) at 6°C using an electrolyte of A3. TEM observations were performed in a JEOL JEM-2200 FS at an acceleration voltage of 200 kV, through which bright-field images, DFIs, SADPs and HRTEM images were recorded by a Gatan SDD Camera. FFT and inverse FFT analysis were applied to the HRTEM images. SEM-BSE and electron backscatter diffraction (EBSD) were carried out in a Zeiss Crossbeam XB 1540 FIB-SEM instrument (Carl Zeiss SMT AG, Germany). EBSD was used to determine the grain orientation where SEM-BSE micrographs were taken. To maintain consistency with the notation used for the TEM results, $[0\text{--}11]$ and $[111]$ are used to denote the plane normals of $\langle 110 \rangle$ and $\langle 111 \rangle$ grains determined by EBSD. Elemental distribution at atomic scale was studied using local electrode APT (LEAP 3000X HR, Cameca Inc.). APT tips were prepared from a $[111]\beta$ grain (as shown in Supplementary Fig. 7b), following the standard procedure⁴² in a FEI Helios Nanolab 600i dual-beam FIB.

Data availability. The data that support the findings of this study are available from the corresponding authors on request.

References

1. Leyens, C. & Peters, M. *Titanium and Titanium Alloys: Fundamentals and Applications* (Wiley-VCH, 2003).
2. Saito, T. *et al.* Multifunctional alloys obtained via a dislocation-free plastic deformation mechanism. *Science* **300**, 464–467 (2003).
3. Gutkin, M. Y., Ishizaki, T., Kuramoto, S., Ovid'ko, I. A. & Skiba, N. V. Giant faults in deformed Gum Metal. *Int. J. Plasticity* **24**, 1333–1359 (2008).
4. Obbard, E. G. *et al.* Mechanics of superelasticity in Ti-30Nb-(8–10)Ta-5Zr alloy. *Acta Mater.* **58**, 3557–3567 (2010).
5. Withey, E. A., Minor, A. M., Chrzan, D. C., Morris, J. W. & Kuramoto, S. The deformation of Gum Metal through *in situ* compression of nanopillars. *Acta Mater.* **58**, 2652–2665 (2010).
6. Plancher, E., Tasan, C. C., Sandloebes, S. & Raabe, D. On dislocation involvement in Ti-Nb gum metal plasticity. *Script. Mater.* **68**, 805–808 (2013).
7. Tane, M. *et al.* Low Young's modulus in Ti-Nb-Ta-Zr-O alloys: cold working and oxygen effects. *Acta Mater.* **59**, 6975–6988 (2011).
8. Vorontsov, V. A., Jones, N. G., Rahman, K. M. & Dye, D. Superelastic load cycling of Gum Metal. *Acta Mater.* **88**, 323–333 (2015).
9. Yang, Y., Li, G. P., Cheng, G. M., Li, Y. L. & Yang, K. Multiple deformation mechanisms of Ti-22.4Nb-0.73Ta-2.0Zr-1.34O alloy. *Appl. Phys. Lett.* **94**, 061901 (2009).
10. Besse, M., Castany, P. & Gloriant, T. Mechanisms of deformation in gum metal TNTZ-O and TNTZ titanium alloys: a comparative study on the oxygen influence. *Acta Mater.* **59**, 5982–5988 (2011).
11. Yang, Y. *et al.* Formation of zigzag-shaped $[112] \langle 111 \rangle$ beta mechanical twins in Ti-24.5Nb-0.7Ta-2Zr-1.4O alloy. *Script. Mater.* **66**, 211–214 (2012).
12. Lai, M. J. *et al.* Origin of shear induced β to ω transition in Ti-Nb-based alloys. *Acta Mater.* **92**, 55–63 (2015).
13. Yano, T., Murakami, Y., Shindo, D., Hayasaka, Y. & Kuramoto, S. Transmission electron microscopy studies on nanometer-sized ω phase produced in Gum Metal. *Script. Mater.* **63**, 536–539 (2010).
14. Wang, Y. *et al.* Strain glass transition in a multifunctional β -type Ti alloy. *Sci. Rep.* **4**, 3995 (2014).
15. Raabe, D., Sander, B., Friak, M., Ma, D. & Neugebauer, J. Theory-guided bottom-up design of beta-titanium alloys as biomaterials based on first principles calculations: theory and experiments. *Acta Mater.* **55**, 4475–4487 (2007).
16. Banerjee, D. & Williams, J. C. Perspectives on titanium science and technology. *Acta Mater.* **61**, 844–879 (2013).
17. Tang, M., Carter, W. C. & Cannon, R. M. Diffuse interface model for structural transitions of grain boundaries. *Phys. Rev. B* **73**, 024102 (2006).
18. Tang, M., Carter, W. C. & Cannon, R. M. Grain boundary transitions in binary alloys. *Phys. Rev. Lett.* **97**, 075502 (2006).
19. Dillon, S. J. & Harmer, M. P. Multiple grain boundary transitions in ceramics: a case study of alumina. *Acta Mater.* **55**, 5247–5254 (2007).
20. Dillon, S. J., Tang, M., Carter, W. C. & Harmer, M. P. Complexion: a new concept for kinetic engineering in materials science. *Acta Mater.* **55**, 6208–6218 (2007).
21. Baram, M., Chatain, D. & Kaplan, W. D. Nanometer-thick equilibrium films: the interface between thermodynamics and atomistics. *Science* **332**, 206–209 (2011).
22. Harmer, M. P. The phase behavior of interfaces. *Science* **332**, 182–183 (2011).
23. Dillon, S. J., Harmer, M. P. & Rohrer, G. S. The relative energies of normally and abnormally growing grain boundaries in alumina displaying different complexions. *J. Am. Ceram. Soc.* **93**, 1796–1802 (2010).
24. Frolov, T., Divinski, S. V., Asta, M. & Mishin, Y. Effect of interface phase transformations on diffusion and segregation in high-angle grain boundaries. *Phys. Rev. Lett.* **110**, 255502 (2013).
25. Frolov, T., Olmsted, D. L., Asta, M. & Mishin, Y. Structural phase transformations in metallic grain boundaries. *Nat. Commun.* **4**, 1899 (2013).
26. Kaplan, W., Chatain, D., Wynblatt, P. & Carter, W. C. A review of wetting versus adsorption, complexions, and related phenomena: the rosetta stone of wetting. *J. Mater. Sci.* **48**, 5681–5717 (2013).
27. Cantwell, P. R. *et al.* Grain boundary complexions. *Acta Mater.* **62**, 1–48 (2014).
28. Kuzmina, M., Herbig, M., Ponge, D., Sandlöbes, S. & Raabe, D. Linear complexions: confined chemical and structural states at dislocations. *Science* **349**, 1080–1083 (2015).
29. Kim, H. Y., Ikehara, Y., Kim, J. I., Hosoda, H. & Miyazaki, S. Martensitic transformation, shape memory effect and superelasticity of Ti-Nb binary alloys. *Acta Mater.* **54**, 2419–2429 (2006).
30. Chai, Y. W., Kim, H. Y., Hosoda, H. & Miyazaki, S. Interfacial defects in Ti-Nb shape memory alloys. *Acta Mater.* **56**, 3088–3097 (2008).
31. Inamura, T. *et al.* Composition dependent crystallography of α'' -martensite in Ti-Nb-based β -titanium alloy. *Philos. Mag.* **87**, 3325–3350 (2007).
32. Tahara, M., Kim, H. Y., Inamura, T., Hosoda, H. & Miyazaki, S. Lattice modulation and superelasticity in oxygen-added β -Ti alloys. *Acta Mater.* **59**, 6208–6218 (2011).
33. Sikka, S. K., Vohra, Y. K. & Chidambaram, R. Omega phase in materials. *Prog. Mater. Sci.* **27**, 245–310 (1982).
34. Schryvers, D. & Tanner, L. E. High-resolution electron microscopy observations of athermal omega phase in Ti-Mo alloys. *Mater. Sci. Forum* **56**, 329–334 (1990).
35. Banerjee, S. Omega phase transformation – morphologies and mechanisms. *Int. J. Mater. Res.* **97**, 963–977 (2006).
36. Williams, D. B. & Carter, C. B. *Transmission Electron Microscopy: a Textbook for Materials Science* (Springer Science & Business Media, 2009).
37. Banerjee, S. & Mukhopadhyay, P. *Phase Transformations Examples from Titanium and Zirconium Alloys* (Pergamon, 2007).
38. Zhang, J. *et al.* Stress-induced strain glass to martensite (R) transition in a $\text{Ti}_{50}\text{Ni}_{44.5}\text{Fe}_{5.5}$ alloy. *Phys. Rev. B* **83**, 174204 (2011).
39. Zhang, J., Rynko, R., Frenzel, J., Somsen, C. & Eggeler, G. Ingot metallurgy and microstructural characterization of Ti-Ta alloys. *Int. J. Mater. Res.* **105**, 156–167 (2014).
40. Dippel, A.-C. *et al.* Beamline P02.1 at PETRA III for high-resolution and high-energy powder diffraction. *J. Synchrotron Radiat.* **22**, 675–687 (2015).
41. Lutterotti, L. Total pattern fitting for the combined size-strain-stress-texture determination in thin film diffraction. *Nucl. Instrum. Methods Phys. Res. B Beam Interact. Mater. Atoms* **268**, 334–340 (2010).
42. Thompson, K. *et al.* *In situ* site-specific specimen preparation for atom probe tomography. *Ultramicroscopy* **107**, 131–139 (2007).

Acknowledgements

We acknowledge the funding by the European Research Council under the EU's 7th Framework Programme (FP7/2007–2013)/ERC Grant agreement 290998 'SmartMet'. J.Z. acknowledges support of Innovative Research Team in University (IRT13034), 973 Programs of China (2014CB644003), National Key Research and Development Program of China (2016YFB0701302) and NSFC (51501145, 51320105014 and 51621063). Parts of this research were carried out at PETRA III at DESY, a member of the Helmholtz Association (HGF). The contributions of H. Springer, K.G. Pradeep, M. Nellesen, B. Grabowski and A. Kostka are also gratefully acknowledged.

Author contributions

D.R., C.C.T. and J.Z. designed the research. J.Z. was the lead experimental scientist of the study. J.Z., M.J.L. and A.-C.D. interpreted the data. J.Z., C.C.T. and D.R. wrote the paper. All authors discussed the results and commented on the manuscript.

Additional information

Supplementary Information accompanies this paper at <http://www.nature.com/naturecommunications>

Competing financial interests: The authors declare no competing financial interests.

Reprints and permission information is available online at <http://npg.nature.com/reprintsandpermissions/>

How to cite this article: Zhang, J. *et al.* Complexion-mediated martensitic phase transformation in Titanium. *Nat. Commun.* **8**, 14210 doi: 10.1038/ncomms14210 (2017).

Publisher's note: Springer Nature remains neutral with regard to jurisdictional claims in published maps and institutional affiliations.



This work is licensed under a Creative Commons Attribution 4.0 International License. The images or other third party material in this article are included in the article's Creative Commons license, unless indicated otherwise in the credit line; if the material is not included under the Creative Commons license, users will need to obtain permission from the license holder to reproduce the material. To view a copy of this license, visit <http://creativecommons.org/licenses/by/4.0/>

© The Author(s) 2017