

## MIT Open Access Articles

*Draft genome sequence of strain HIMB100, a cultured representative of the SAR116 clade of marine Alphaproteobacteria*

The MIT Faculty has made this article openly available. **Please share** how this access benefits you. Your story matters.

**Citation:** Grote, Jana et al. "Draft Genome Sequence of Strain HIMB100, a Cultured Representative of the SAR116 Clade of Marine Alphaproteobacteria." *Standards in Genomic Sciences* 5.3 (2011): 269–278. CrossRef. Web.

**As Published:** <http://dx.doi.org/10.4056/sigs.1854551>

**Publisher:** Genomic Standards Consortium

**Persistent URL:** <http://hdl.handle.net/1721.1/77602>

**Version:** Final published version: final published article, as it appeared in a journal, conference proceedings, or other formally published context

**Terms of use:** Creative Commons Attribution 3.0 Unported License



## Draft genome sequence of strain HIMB100, a cultured representative of the SAR116 clade of marine *Alphaproteobacteria*

Jana Grote<sup>1,2</sup>, Cansu Bayindirli<sup>1,3</sup>, Kristin Bergauer<sup>1,4</sup>, Paula Carpintero de Moraes<sup>1,5</sup>, Huan Chen<sup>1,6</sup>, Lindsay D'Ambrosio<sup>1,7</sup>, Bethanie Edwards<sup>1,8</sup>, Beatriz Fernández-Gómez<sup>1,9</sup>, Mariam Hamisi<sup>1,10</sup>, Ramiro Logares<sup>1,9</sup>, Dan Nguyen<sup>1,11</sup>, Yoshimi M. Rii<sup>1,12</sup>, Emily Saeck<sup>1,13</sup>, Charles Schutte<sup>1,14</sup>, Brittany Widner<sup>1,15</sup>, Matthew J. Church<sup>1,12</sup>, Grieg F. Steward<sup>1,12</sup>, David M. Karl<sup>1,12</sup>, Edward F. DeLong<sup>1,16</sup>, John M. Eppley<sup>16</sup>, Stephan C. Schuster<sup>17</sup>, Nikos C. Kyrpides<sup>18</sup>, and Michael S. Rappé<sup>1,2\*</sup>

<sup>1</sup> Center for Microbial Oceanography: Research and Education, University of Hawaii, Honolulu, Hawaii, USA

<sup>2</sup> Hawaii Institute of Marine Biology, SOEST, University of Hawaii, Kaneohe, Hawaii, USA

<sup>3</sup> Plymouth Marine Laboratory, University of East Anglia, Norwich, UK

<sup>4</sup> Department of Marine Biology, University of Vienna, Vienna, Austria

<sup>5</sup> Instituto Oceanografico, Universidade de Sao Paulo, Sao Paulo, Brazil

<sup>6</sup> Environmental Sciences Institute, Florida A&M University, Tallahassee, Florida, USA

<sup>7</sup> Department of Marine Sciences, University of North Carolina, Chapel Hill, North Carolina, USA

<sup>8</sup> Scripps Institution of Oceanography, University of California, San Diego, La Jolla, California, USA

<sup>9</sup> Departament de Biologia Marina i Oceanografia, Institut de Ciències del Mar, CMIMA, CSIC, Barcelona, Spain

<sup>10</sup> School of Natural Sciences and Mathematics, The University of Dodoma, Dodoma, Tanzania

<sup>11</sup> Département de Sciences Biologiques, Université de Montréal, Montréal, Canada

<sup>12</sup> Department of Oceanography, SOEST, University of Hawaii, Honolulu, Hawaii, USA

<sup>13</sup> Australian Rivers Institute, Griffith University, Queensland, Australia

<sup>14</sup> Department of Marine Sciences, University of Georgia, Athens, Georgia, USA

<sup>15</sup> Department of Ocean, Earth and Atmospheric Sciences, Old Dominion University, Norfolk, Virginia, USA

<sup>16</sup> Department of Civil and Environmental Engineering, Massachusetts Institute of Technology, Cambridge, Massachusetts, USA

<sup>17</sup> Center for Comparative Genomics and Bioinformatics, Pennsylvania State University, University Park, Pennsylvania, USA

<sup>18</sup> Department of Energy Joint Genome Institute, Walnut Creek, California, USA

\*Corresponding author: Michael S. Rappé (rappe@hawaii.edu)

**Keywords:** marine bacterioplankton, genome, proteorhodopsin, SAR116, *Rhodospirillaceae*

Strain HIMB100 is a planktonic marine bacterium in the class *Alphaproteobacteria*. This strain is of interest because it is one of the first known isolates from a globally ubiquitous clade of marine bacteria known as SAR116 within the family *Rhodospirillaceae*. Here we describe preliminary features of the organism, together with the draft genome sequence and annotation. This is the second genome sequence of a member of the SAR116 clade. The 2,458,945 bp genome contains 2,334 protein-coding and 42 RNA genes.

### Introduction

HIMB100 is a taxonomically uncharacterized marine bacterial strain isolated from surface seawater collected off the coast of Oahu, Hawaii in the subtropical Pacific Ocean [1]. It is of significant interest because it belongs to a 16S rRNA gene clade of marine *Alphaproteobacteria* known as SAR116, which was first described by Mullins *et*

*al.* in 1995 [2] and has since been found to be widespread in the global surface ocean based on cultivation-independent surveys of marine bacterioplankton [3-9]. The first cultured strain of this clade was isolated from surface waters of the Pacific Ocean off the coast of Oregon, USA, in 2007 [10]. In 2010, the genome sequence of *Candidatus*

*Puniceispirillum marinum* IMCC1322, a cultivated member of the SAR116 clade isolated from the East Sea in the Western Pacific Ocean (Sea of Japan), was reported [11]. Here we present a preliminary set of features for strain HIMB100 (Table 1), together with a description of the complete genomic sequencing and annotation, as well as a preliminary comparative analysis with the complete genome of *Candidatus* P. *marinum* IMCC1322.

## Classification and features

Strain HIMB100 was isolated by a high-throughput, dilution-to-extinction approach [20] from seawater collected off the coast of Hawaii, USA, in the subtropical North Pacific Ocean, and bore an identical 16S rRNA gene sequence to three other isolates obtained from the same study [1]. All four strains were isolated in seawater sterilized by tangential flow filtration and amended with low concentrations of inorganic nitrogen and phosphorus (1.0  $\mu\text{M}$   $\text{NH}_4\text{Cl}$ , 1.0  $\mu\text{M}$   $\text{NaNO}_3$ , and 0.1  $\mu\text{M}$   $\text{KH}_2\text{PO}_4$ ). Repeated attempts to cultivate the isolates on solidified culture media or in artificial seawater media failed. In addition, preliminary attempts have failed to identify amendments to the seawater-based culture medium that would increase the abundance of cells in culture above ca.  $1 \times 10^6$  cells  $\text{ml}^{-1}$ .

Phylogenetic analyses based on 16S rRNA gene sequence comparisons revealed strain HIMB100 to be closely related to a large number of environmental gene clones obtained almost exclusively from seawater. For example, alignment of HIMB100 against the Silva release 104 reference database (512,037 high quality bacterial 16S rRNA sequences >1200 base pairs in length, released October 2010) revealed 554 entries that belong to the same phylogenetic lineage within the *Alphaproteobacteria*. Of these, only one originated from a cultivated isolate (*Candidatus* P. *marinum* IMCC1322), and all 554 entries derived from either seawater or the marine environment. The 16S rRNA gene sequence from Oregon coast strain HTCC8037 was 98.0% similar to that of strain HIMB100, but it does not appear in the Silva reference database because it is a partial sequence of 884 nucleotides in length [10]. In phylogenetic analyses with taxonomically described

members of the *Alphaproteobacteria*, strain HIMB100 and *Candidatus* P. *marinum* IMCC1322 (94.1% similar) formed a monophyletic lineage within the family *Rhodospirillaceae* (Figure 1). The 16S rRNA gene of strain HIMB100 was most similar to the type strains of *Nisaea denitrificans* (90.3%), *N. nitritireducens* (89.9%), and *Thalassobaculum salexigens* (89.3%), which were all isolated from surface seawater of the northwestern Mediterranean Sea [25,26], *T. litoreum* (89.5%), isolated from coastal seawater off of Korea [27], and *Oceanibaculum indicum* (89.4%), isolated from a polycyclic aromatic hydrocarbon-degrading consortium that was enriched from a deep-seawater sample collected from the Indian Ocean [28].

Cells of strain HIMB100 are long, thin spiral-shaped rods (0.3 x 1-5  $\mu\text{m}$ ) when in exponential growth (Figure 2). Because it is able to grow in media consisting solely of sterile seawater with added inorganic nitrogen and phosphorus in the light or dark, HIMB100 is presumed to grow chemoheterotrophically by oxidizing compounds in the dissolved organic carbon pool of natural seawater. A summary of other known preliminary features is shown in Table 1.

## Chemotaxonomy

No cellular fatty acids profiles are currently available for strain HIMB100, nor have any been reported for other cultivated members of the SAR116 clade.

## Genome sequencing and annotation

### Genome project history

Strain HIMB100 was selected for sequencing because of its phylogenetic affiliation with a widespread lineage of marine bacteria that is significantly underrepresented in culture collections. The genome project is deposited in the Genomes OnLine Database (GOLD) as project Gi06671, and the complete genome sequence in GenBank as accession number AFXB00000000 [Table 2]. A summary of the main project information is shown in Table 2.

**Table 1.** Classification and general features of strain HIMB100 according to the MIGS recommendations [12]

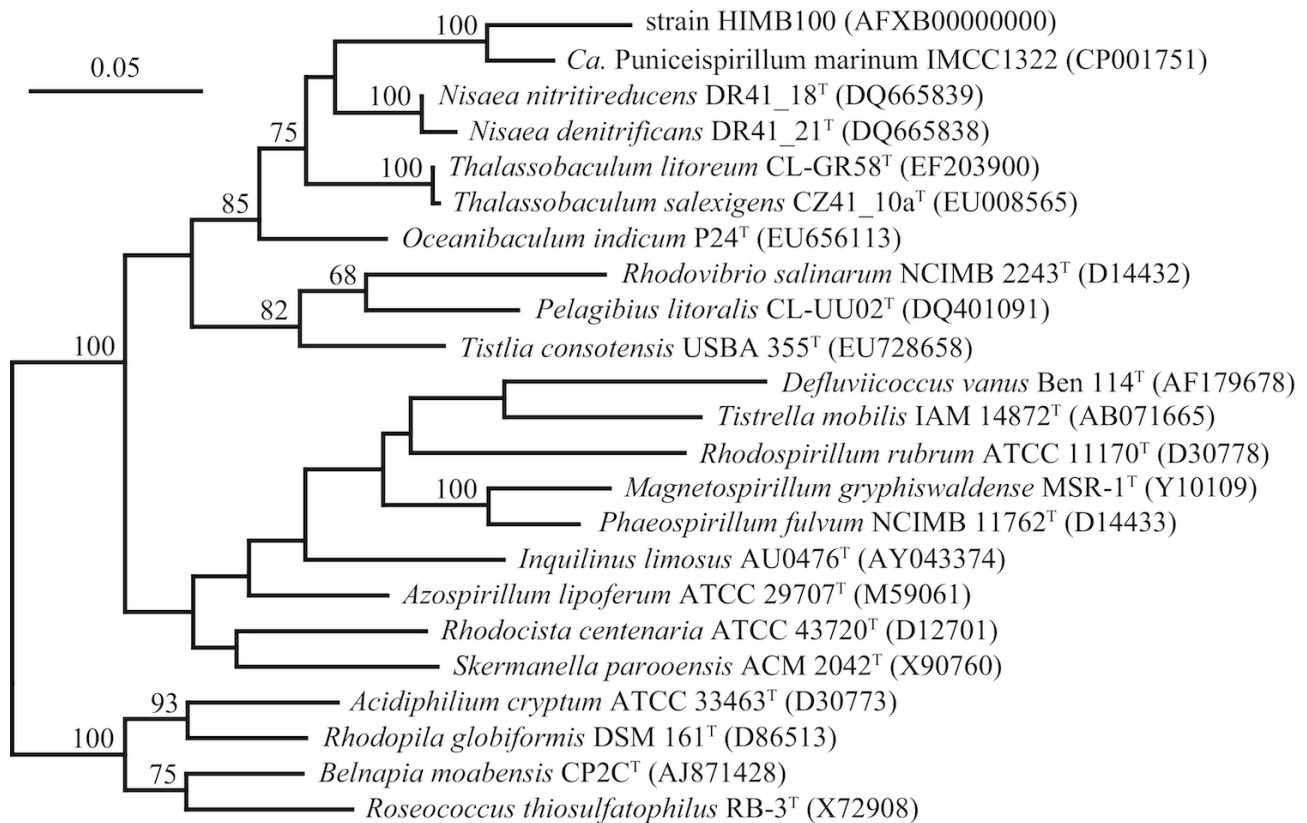
MIGS ID	Property	Term	Evidence code
		Domain <i>Bacteria</i>	TAS [13]
		Phylum <i>Proteobacteria</i>	TAS [14]
		Class <i>Alphaproteobacteria</i>	TAS [15,16]
	Current classification	Order <i>Rhodospirillales</i>	TAS [17,18]
		Family <i>Rhodospirillaceae</i>	TAS [17,18]
		Genus not assigned	
		Species not assigned	
		Type strain HIMB100	IDA
	Gram stain	negative	NAS
	Cell shape	spiral-shaped	IDA
	Motility	unknown	
	Sporulation	non-sporulating	NAS
	Temperature range	mesophilic	IDA
	Optimum temperature	unknown	
	Carbon source	ambient seawater DOC	TAS [1]
	Energy source	chemoorganoheterotrophic	NAS
MIGS-6	Habitat	sea water	
MIGS-6.3	Salinity	~35.0 ‰	NAS
MIGS-22	Oxygen	aerobic	NAS
MIGS-15	Biotic relationship	free-living	TAS [1]
MIGS-14	Pathogenicity	none	NAS
MIGS-4	Geographic location	Kaneohe Bay, Hawaii, subtropical Pacific Ocean	TAS [1]
MIGS-5	Sample collection time	18 May 2005	TAS [1]
MIGS-4.1	Latitude	21.44	TAS [1]
MIGS-4.2	Longitude	-157.78	TAS [1]
MIGS-4.3	Depth	~1 m	TAS [1]

Evidence codes - IDA: Inferred from Direct Assay (first time in publication); TAS: Traceable Author Statement (i.e., a direct report exists in the literature); NAS: Non-traceable Author Statement (i.e., not directly observed for the living, isolated sample, but based on a generally accepted property for the species, or anecdotal evidence). These evidence codes are from the Gene Ontology project [19]. If the evidence code is IDA, the property was directly observed by one of the authors or an expert mentioned in the acknowledgements.

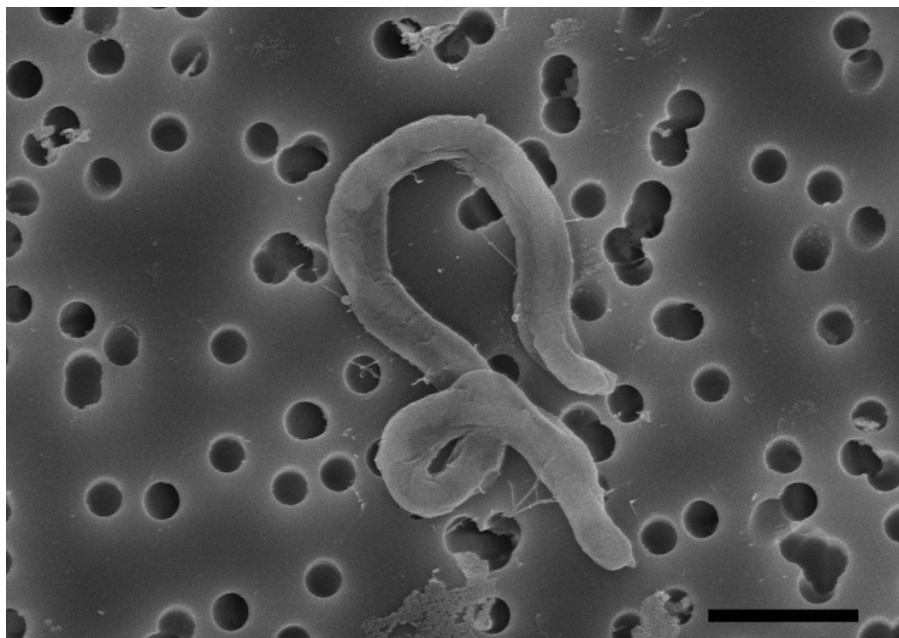
### Growth conditions and DNA isolation

Strain HIMB100 was grown at 27° C in 50 L of coastal Hawaii seawater sterilized by tangential flow filtration [1] and supplemented with (final concentration) 10 µM NH<sub>4</sub>Cl, 1.0 µM KH<sub>2</sub>PO<sub>4</sub>, 1.0 µM L-serine, 1.0 µM L-methionine, 10 mM FeCl<sub>3</sub>, 0.1 µM betaine, 0.001% (wt/vol) of D-ribose, D-glucose, succinic acid, pyruvic acid, glycerol, and N-acetyl-D-glucosamine, 0.002%

(vol/vol) ethanol, and Va vitamin mix at a 10<sup>-3</sup> dilution [20]. Cells from the liquid culture were collected on a membrane filter, and DNA was isolated from the microbial biomass using a standard phenol/chloroform/isoamyl alcohol extraction protocol. A total of ca. 12 µg of DNA was obtained.



**Figure 1.** Phylogenetic tree based comparisons between 16S rRNA gene sequences from strain HIMB100, *Candidatus Puniceispirillum marinum* IMCC1322, and type strains of related species within the family *Rhodospirillaceae*. Sequence selection and alignment improvements were carried out using the 'All-Species Living Tree' project database [21] and the ARB software package [22]. The tree was inferred from 1,206 alignment positions using the RAxML maximum likelihood method [23]. Support values from 100 bootstrap replicates, determined by RAxML [24], are displayed above branches if larger than 60%. The scale bar indicates substitutions per site.



**Figure 2.** Scanning electron micrograph of strain HIMB100. Scale bar corresponds to 1  $\mu$ m.

**Table 2.** Genome sequencing project information

MIGS ID	Property	Term
MIGS-31	Finishing quality	Finished
MIGS-28	Libraries used	one standard 454 pyrosequence titanium library
MIGS-29	Sequencing platforms	454 GS FLX Titanium
MIGS-31.2	Fold coverage	132 × pyrosequence
MIGS-30	Assemblers	Newbler version 2.3
MIGS-32	Gene calling method	Prodigal 1.4, GenePRIMP
	Genbank ID	AFXB000000000
	Genbank Date of Release	November 10, 2011
	GOLD ID	Gi0667
	Database: IMG	2503113005
	NCBI taxon ID	281031
MIGS-13	Source material identifier	HIMB100
	Project relevance	environmental

### Genome sequencing and assembly

The genome of strain HIMB100 was sequenced at the Pennsylvania State University Center for Comparative Genomics and Bioinformatics (University Park, PA, USA) using the 454 GS FLX Ti platform of 454 Life Sciences (Branford, CT, USA). The sequencing library was prepared according to the 454 instructions from genomic DNA of strain HIMB100. Sequencing was carried out on a full 454 picotiter plate, yielding 1,342,353 reads with an average length of 415 bp, totaling 556 Mbp. Pyrosequencing reads were assembled using the Newbler assembler version 2.3, resulting in 10 contigs of 2,458,945 bp. Sequencing provided 132 × coverage of the genome.

### Genome annotation

Genes were identified using Prodigal [29] as part of the genome annotation pipeline in the Integrated Microbial Genomes Expert Review (IMG-ER) system [30]. The predicted coding sequences were translated and used to search the National Center for Biotechnology Information (NCBI) nonredundant database, UniProt, TIGRFam, Pfam, PRIAM, KEGG, COG, and InterPro databases. The tRNAscanSE tool [31] was used to find tRNA genes, whereas ribosomal RNAs were found by using the tool RNAmmer [32]. Other non-coding RNAs were identified by searching the genome for the Rfam profiles using INFERNAL (v0.81) [33]. Additional gene prediction analysis and manual functional annotation was performed within IMG-ER.

### Genome properties

The genome is 2,458,945 bp long and comprises 10 contigs ranging in size from 30,717 to 1,167,490 bp, with an overall GC content of 50.48 % (Table 3 and Figure 3). Of the 2,376 genes predicted, 2,334 were protein coding genes, and 42 were RNAs. Most protein coding genes (82.0%) were assigned putative functions, while the remaining genes were annotated as hypothetical proteins. The distribution of genes into COG functional categories is presented in Table 4.

### Genome comparisons with *Candidatus Puniceispirillum marinum* IMCC1322

The genome of one other member of the SAR116 clade, *Candidatus P. marinum* IMCC1322, was recently sequenced [11]. This genome is 2,753,527 bp in length (295 Kbp longer than HIMB100), arranged in a single chromosome, and possesses a G + C content similar to that of HIMB100 (48.85% vs. 50.48%). Although the genome of *Candidatus P. marinum* IMCC1322 is annotated with over 200 more genes than HIMB100 (2,582 genes vs. 2,376), it only encodes for 51 additional protein-coding genes with predicted function.

The predicted metabolic potentials encoded by the two genomes have many features in common. The genomes of both strains possess a lesion in the Embden-Meyerhoff-Parnas pathway in that they lack the enzyme 6-phosphofructokinase. However, the genomes of both strains possess two

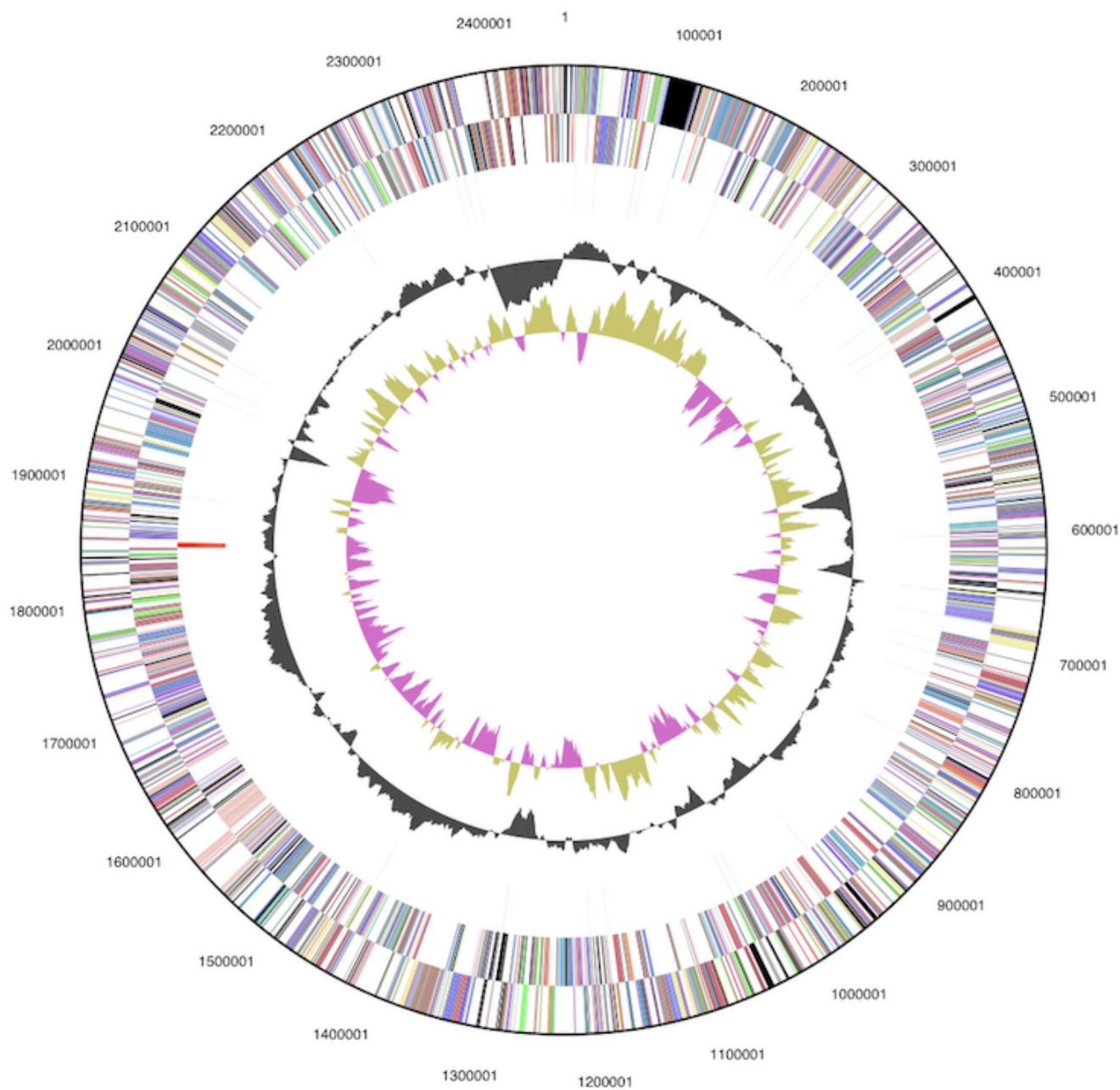
key enzymes of the Entner-Doudoroff pathway, phosphogluconate dehydratase and 2-keto-3-deoxy-phosphogluconate aldolase. The oxidative portion of the pentose phosphate pathway is incomplete in both strains; the genome of HIMB100 lacks a recognizable 6-phosphogluconolactonase, while the genomes of both strains lack a recognizable 6-phosphogluconate dehydrogenase. In addition, several genes of predicted biogeochemical importance are present in both strains, including proteorhodopsin and carotenoid biosynthesis genes, carbon monoxide dehydrogenase, dimethylsulfoniopropionate (DMSP) demethylase, and dimethylsulfoxide (DMSO) reductase. Genes for assimilatory sulfate reduction are incomplete in both genomes, and so it is hypothesized that exogenous reduced sulfur compounds, such as DMSP and DMSO, are likely to fill the requirement of sulfur for cellular growth. The genomes of both strains possess a high affinity inorganic phosphate transport system (pstSCAB), and encode a phosphate regulon sensor (phoU), phosphate

starvation-inducible protein (phoH), and the phosphate regulon consisting of the phoB-phoR two-component system. Both genomes encode for ABC transporters for iron, glycine betaine/proline, zinc, sorbitol/mannitol, amino acids (branched-chain and general L-amino acids), sulfonate/nitrate/taurine and a heme exporter. Thiamine and alpha-glucoside transport systems were only identified within the genome of strain HIMB100, while ribose and putrescine transport systems were only identified within the genome of *Candidatus* P. marinum IMCC1322. Finally, two operons of potential ecological relevance show different distributions within the two genomes: the genome of strain HIMB100 possesses a seven-gene operon encoding all of the subunits and accessory proteins for urease that is completely lacking in the genome of *Candidatus* P. marinum IMCC1322, while the genome of *Candidatus* P. marinum IMCC1322 possesses 21 genes for cobalamin biosynthesis that are absent from the genome of strain HIMB100.

**Table 3.** Genome statistics

Attribute	Value	% of total <sup>a</sup>
Genome size (bp)	2,458,945	100.00
DNA coding region (bp)	2,260,613	91.91
DNA G+C content (bp)	1,241,171	50.48
Total genes	2,376	100.00
RNA genes	42	1.77
Protein-coding genes	2,334	98.23
Genes with function prediction	1,948	81.99
Genes assigned to COGs	1,873	78.83
Genes assigned to Pfam domains	1,957	82.37
Genes with signal peptides	733	30.43
Genes with transmembrane helices	504	21.21

a) The total is based on either the size of the genome in base pairs or the total number of protein coding genes in the annotated genome.



**Figure 3.** Graphic circular map of the HIMB100 genome. From outside to the center: Genes on forward strand (colored by COG categories), Genes on reverse strand (colored by COG categories), RNA genes (tRNAs green, rRNAs red, other RNAs black), GC content, GC skew. The 10 contigs of the draft genome are ordered randomly.

**Table 4.** Number of genes associated with the 25 general COG functional categories

Code	Value	%age <sup>a</sup>	Description
J	142	6.8	Translation
A	0	0	RNA processing and modification
K	77	3.7	Transcription
L	93	4.5	Replication, recombination and repair
B	2	0.1	Chromatin structure and dynamics
D	20	1.0	Cell cycle control, mitosis and meiosis
Y	0	0	Nuclear structure
V	16	0.8	Defense mechanisms
T	41	2.0	Signal transduction mechanisms
M	142	6.8	Cell wall/membrane biogenesis
N	41	2.0	Cell motility
Z	0	0	Cytoskeleton
W	0	0	Extracellular structures
U	40	1.9	Intracellular trafficking and secretion
O	89	4.3	Posttranslational modification, protein turnover, chaperones
C	149	7.1	Energy production and conversion
G	126	6.0	Carbohydrate transport and metabolism
E	250	12.0	Amino acid transport and metabolism
F	58	2.8	Nucleotide transport and metabolism
H	117	5.6	Coenzyme transport and metabolism
I	113	5.4	Lipid transport and metabolism
P	70	3.4	Inorganic ion transport and metabolism
Q	78	3.7	Secondary metabolites biosynthesis, transport and catabolism
R	271	13.0	General function prediction only
S	155	7.4	Function unknown
-	503	21.2	Not in COGs

a) The total is based on the total number of protein coding genes in the annotated genome.

## Acknowledgements

We gratefully acknowledge the support of the Gordon and Betty Moore Foundation, which funded sequencing of this genome. Annotation was performed as part of the 2010 Summer Course in Microbial Oceanography (<http://cmore.soest.hawaii.edu/summercourse/2010/index.htm>), with support from the Agouron Institute, the Gordon and Betty Moore Foundation, the University of Hawaii at Manoa School of Ocean and Earth Science

and Technology (SOEST), and the Center for Microbial Oceanography: Research and Education (C-MORE), a National Science Foundation-funded Science and Technology Center (award No. EF0424599). This is SOEST contribution 8364 and HIMB contribution 1459.

## References

- Rappé MS, Brandon ML. Diversity among bacteria from the coastal subtropical Pacific Ocean determined by high-throughput culturing and small-subunit rRNA gene clone libraries. In review.
- Mullins TD, Britschgi TB, Krest RL, Giovannoni SJ. Genetic comparisons reveal the same unknown bacterial lineages in Atlantic and Pacific bacterioplankton communities. *Limnol Oceanogr* 1995; **40**:148-158. [doi:10.4319/lo.1995.40.1.0148](https://doi.org/10.4319/lo.1995.40.1.0148)
- Rappé MS, Kemp PF, Giovannoni SJ. Phylogenetic diversity of marine coastal picoplankton 16S rRNA genes cloned from the continental shelf off Cape Hatteras, North Carolina. *Limnol Oceanogr* 1997; **42**:811-826. [doi:10.4319/lo.1997.42.5.0811](https://doi.org/10.4319/lo.1997.42.5.0811)
- Acinas SG, Antón J, Rodríguez-Valera F. Diversity of free-living and attached bacteria in offshore western Mediterranean waters as depicted by analysis of genes encoding 16S rRNA. *Appl Environ Microbiol* 1999; **65**:514-522. [PubMed](https://pubmed.ncbi.nlm.nih.gov/10166496/)
- Rappé MS, Vergin K, Giovannoni SJ. Phylogenetic comparisons of a coastal bacterioplankton community with its counterparts in open ocean and freshwater systems. *FEMS Microbiol Ecol* 2000; **33**:219-232. [PubMed doi:10.1016/S0168-6496\(00\)00064-7](https://pubmed.ncbi.nlm.nih.gov/10101686496/)
- Giovannoni SJ, Rappé MS. (2000). Evolution, diversity and molecular ecology of marine prokaryotes. In: Kirchman DL (ed), *Microbial Ecology of the Oceans*. Wiley and Sons. pp. 47-84.
- Suzuki MT, Béjà O, Taylor LT, DeLong EF. Phylogenetic analysis of ribosomal RNA operons from uncultivated coastal marine bacterioplankton. *Environ Microbiol* 2001; **3**:323-331. [PubMed doi:10.1046/j.1462-2920.2001.00198.x](https://pubmed.ncbi.nlm.nih.gov/101046j.1462-2920.2001.00198.x)
- Giovannoni SJ, Stingl U. Molecular diversity and ecology of microbial plankton. *Nature* 2005; **437**:343-348. [PubMed doi:10.1038/nature04158](https://pubmed.ncbi.nlm.nih.gov/101038/nature04158)
- DeLong EF, Preston CM, Mincer T, Rich V, Hallam SJ, Frigaard NU, Martinez A, Sullivan MB, Edwards R, Brito BR, et al. Community genomics among stratified microbial assemblages in the ocean's interior. *Science* 2006; **311**:496-503. [PubMed doi:10.1126/science.1120250](https://pubmed.ncbi.nlm.nih.gov/101126/science.1120250)
- Stingl U, Tripp HJ, Giovannoni SJ. Improvements of high-throughput culturing yielded novel SAR11 strains and other abundant marine bacteria from the Oregon coast and the Bermuda Atlantic Time Series study site. *ISME J* 2007; **1**:361-371. [PubMed](https://pubmed.ncbi.nlm.nih.gov/101038/nature00917)
- Oh HM, Kwon KK, Kang I, Kang SG, Lee JH, Kim SJ, Cho JC. Complete genome sequence of "Candidate Puniceispirillum marinum": IMCC1322, a representative of the SAR116 clade in the *Alphaproteobacteria*. *J Bacteriol* 2010; **192**:3240-3241. [PubMed doi:10.1128/JB.00347-10](https://pubmed.ncbi.nlm.nih.gov/101128/JB.00347-10)
- Field D, Garrity G, Gray T, Morrison N, Selengut J, Sterk P, Tatusova T, Thomson N, Allen MJ, Angiuoli SV, et al. The minimum information about a genome sequence (MIGS) specification. *Nat Biotechnol* 2008; **26**:541-547. [PubMed doi:10.1038/nbt1360](https://pubmed.ncbi.nlm.nih.gov/101038/nbt1360)
- Woese CR, Kandler O, Wheelis ML. Towards a natural system of organisms: proposal for the domains *Archaea*, *Bacteria*, and *Eucarya*. *Proc Natl Acad Sci USA* 1990; **87**:4576-4579. [PubMed doi:10.1073/pnas.87.12.4576](https://pubmed.ncbi.nlm.nih.gov/101073/pnas.87.12.4576)
- Garrity GM, Bell JA, Lilburn T. Phylum XIV. *Proteobacteria* phyl. nov. In: Garrity GM, Brenner DJ, Krieg NR, Staley JT (eds), *Bergey's Manual of Systematic Bacteriology*, Second Edition, Volume 2, Part B, Springer, New York, 2005, p. 1.
- Validation List No. 107. List of new names and new combinations previously effectively, but not validly, published. *Int J Syst Evol Microbiol* 2006; **56**:1-6. [PubMed doi:10.1099/ijs.0.64188-0](https://pubmed.ncbi.nlm.nih.gov/101099/ijs.0.64188-0)
- Garrity GM, Bell JA, Lilburn T. Class I. *Alphaproteobacteria* class. nov. In: Garrity GM, Brenner DJ, Krieg NR, Staley JT (eds), *Bergey's Manual of Systematic Bacteriology*, Second Edition, Volume 2, Part C, Springer, New York, 2005, p. 1.
- Skerman VBD, McGowan V, Sneath PHA. Approved Lists of Bacterial Names. *Int J Syst Bacteriol* 1980; **30**:225-420. [doi:10.1099/00207713-30-1-225](https://pubmed.ncbi.nlm.nih.gov/101099/00207713-30-1-225)
- Pfennig N, Trüper HG. Higher taxa of the phototrophic bacteria. *Int J Syst Bacteriol* 1971; **21**:17-18. [doi:10.1099/00207713-21-1-17](https://pubmed.ncbi.nlm.nih.gov/101099/00207713-21-1-17)
- Ashburner M, Ball CA, Blake JA, Botstein D, Butler H, Cherry JM, Davis AP, Dolinski K, Dwight SS, Eppig JT, et al. Gene Ontology: tool for the unification of biology. *Nat Genet* 2000; **25**:25-29. [PubMed doi:10.1038/75556](https://pubmed.ncbi.nlm.nih.gov/101038/75556)
- Rappé MS, Cannon SA, Vergin KL, Giovannoni SJ. Cultivation of the ubiquitous SAR11 marine bacterioplankton clade. *Nature* 2002; **418**:630-633. [PubMed doi:10.1038/nature00917](https://pubmed.ncbi.nlm.nih.gov/101038/nature00917)

21. Yarza P, Richter M, Peplies J, Euzéby J, Amann R, Schleifer KH, Ludwig W, Glöckner FO, Rosselló-Móra R. The All-Species Living Tree project: a 16S rRNA-based phylogenetic tree of all sequenced type strains. *Syst Appl Microbiol* 2008; **31**:241-250. [PubMed](#) [doi:10.1016/j.syapm.2008.07.001](https://doi.org/10.1016/j.syapm.2008.07.001)
22. Ludwig W, Strunk O, Westram R, Richter L, Meier H, Kumar Y, Buchner T, Lai S, Steppi G, Jobb W, et al. ARB: a software environment for sequence data. *Nucleic Acids Res* 2004; **32**:1363-1371. [PubMed](#) [doi:10.1093/nar/gkh293](https://doi.org/10.1093/nar/gkh293)
23. Stamatakis A. RAxML-VI-HPC: maximum likelihood-based phylogenetic analyses with thousands of taxa and mixed models. *Bioinformatics* 2006; **22**:2688-2690. [PubMed](#) [doi:10.1093/bioinformatics/btl446](https://doi.org/10.1093/bioinformatics/btl446)
24. Stamatakis A, Hoover P, Rougemont J. A rapid bootstrap algorithm for the RAxML web-servers. *Syst Biol* 2008; **57**:758-771. [PubMed](#) [doi:10.1080/10635150802429642](https://doi.org/10.1080/10635150802429642)
25. Urios L, Michotey V, Intertaglia L, Lesongeur F, Lebaron P. *Nisaea denitrificans* gen. nov., sp. nov. and *Nisaea nitritireducens* sp. nov., two novel members of the class *Alphaproteobacteria* from the Mediterranean Sea. *Int J Syst Evol Microbiol* 2008; **58**:2336-2341. [PubMed](#) [doi:10.1099/ijs.0.64592-0](https://doi.org/10.1099/ijs.0.64592-0)
26. Urios L, Michotey V, Intertaglia L, Lesongeur F, Lebaron P. *Thalassobaculum salexigens* sp. nov., a new member of the family *Rhodospirillaceae* from the NW Mediterranean Sea, and emended description of the genus *Thalassobaculum*. *Int J Syst Evol Microbiol* 2010; **60**:209-213. [PubMed](#) [doi:10.1099/ijs.0.011460-0](https://doi.org/10.1099/ijs.0.011460-0)
27. Zhang GI, Hwang CY, Cho BC. *Thalassobaculum litoreum* gen. nov., sp. nov., a member of the family *Rhodospirillaceae* isolated from coastal seawater. *Int J Syst Evol Microbiol* 2008; **58**:479-485. [PubMed](#) [doi:10.1099/ijs.0.65344-0](https://doi.org/10.1099/ijs.0.65344-0)
28. Lai Q, Yuan J, Wu C, Shao Z. *Oceanibaculum indicum* gen. nov., sp. nov., isolated from deep seawater of the Indian Ocean. *Int J Syst Evol Microbiol* 2009; **59**:1733-1737. [PubMed](#) [doi:10.1099/ijs.0.004341-0](https://doi.org/10.1099/ijs.0.004341-0)
29. Hyatt D, Chen GL, LoCascio PF, Land ML, Larimer FW, Hauser LJ. Prodigal: prokaryotic gene recognition and translation initiation site identification. *BMC Bioinformatics* 2010; **11**:119. [PubMed](#) [doi:10.1186/1471-2105-11-119](https://doi.org/10.1186/1471-2105-11-119)
30. Markowitz VM, Ivanova NN, Chen A, Chu K, Kyrpides NC. IMG-ER: a system for microbial genome annotation expert review and curation. *Bioinformatics* 2009; **25**:2271-2278. [PubMed](#) [doi:10.1093/bioinformatics/btp393](https://doi.org/10.1093/bioinformatics/btp393)
31. Lowe TM, Eddy SR. tRNAscan-SE: a program for improved detection of transfer RNA genes in genomic sequence. *Nucleic Acids Res* 1997; **25**:955-964. [PubMed](#) [doi:10.1093/nar/25.5.955](https://doi.org/10.1093/nar/25.5.955)
32. Lagesen K, Hallin P, Rodland EA, Staerfeldt HH, Rognes T, Ussery DW. RNAmmer: consistent and rapid annotation of ribosomal RNA genes. *Nucleic Acids Res* 2007; **35**:3100-3108. [PubMed](#) [doi:10.1093/nar/gkm160](https://doi.org/10.1093/nar/gkm160)
33. Griffiths-Jones S, Moxon S, Marshall M, Khanna A, Eddy SR, Bateman A. Rfam: annotating non-coding RNAs in complete genomes. *Nucleic Acids Res* 2004; **33**:D121-D124. [PubMed](#) [doi:10.1093/nar/gki081](https://doi.org/10.1093/nar/gki081)