

MIT Open Access Articles

Uncertainty analysis of vegetation distribution in the northern high latitudes during the 21st century with a dynamic vegetation model

The MIT Faculty has made this article openly available. **Please share** how this access benefits you. Your story matters.

Citation: Jiang, Yueyang, Qianlai Zhuang, Sibyll Schaphoff, Stephen Sitch, Andrei Sokolov, David Kicklighter, and Jerry Melillo. "Uncertainty Analysis of Vegetation Distribution in the Northern High Latitudes During the 21st Century with a Dynamic Vegetation Model." *Ecology and Evolution* 2, no. 3 (February 13, 2012): 593–614.

As Published: <http://dx.doi.org/10.1002/ece3.85>

Publisher: John Wiley & Sons, Inc

Persistent URL: <http://hdl.handle.net/1721.1/89416>

Version: Final published version: final published article, as it appeared in a journal, conference proceedings, or other formally published context

Terms of use: Creative Commons Attribution



Uncertainty analysis of vegetation distribution in the northern high latitudes during the 21st century with a dynamic vegetation model

Yueyang Jiang¹, Qianlai Zhuang², Sibyll Schaphoff³, Stephen Sitch⁴, Andrei Sokolov⁵, David Kicklighter⁶ & Jerry Melillo⁶

¹Department of Earth and Atmospheric Sciences, Purdue University, West Lafayette, Indiana

²Department of Earth and Atmospheric Sciences and Department of Agronomy, Purdue University, West Lafayette, Indiana

³Potsdam Institute for Climate Impact Research, P.O. Box 601203, D-14412 Potsdam, Germany

⁴Met Office Hadley Centre, JCHMR, Maclean Building, Wallingford OX10 8BB, United Kingdom

⁵Department of Earth, Atmospheric, and Planetary Sciences, Massachusetts Institute of Technology, Cambridge, Massachusetts

⁶The Ecosystems Center, Marine Biological Laboratory at Woods Hole, Massachusetts

Keywords

Climate-induced uncertainty, greenness migration, parameter importance, parameter-induced uncertainty, sensitivity analysis, vegetation redistribution.

Correspondence

Yueyang Jiang, Department of Earth and Atmospheric Sciences, Purdue University, West Lafayette, IN. Tel: 1-765-496-2790; Fax: 1-765-496-1210; E-mail: jiang5@purdue.edu

Funded by the NASA Land Use and Land Cover Change program (NASA-NNX09AI26G), Department of Energy (DE-FG0208ER64599), National Science Foundation (NSF-1028291 and NSF-0919331), and the NSF Carbon and Water in the Earth Program (NSF-0630319).

Received: 23 September 2011; Revised: 7 November 2011; Accepted: 9 November 2011

Ecology and Evolution 2012; 2(3): 593–614

doi: 10.1002/ece3.85

Abstract

This study aims to assess how high-latitude vegetation may respond under various climate scenarios during the 21st century with a focus on analyzing model parameters induced uncertainty and how this uncertainty compares to the uncertainty induced by various climates. The analysis was based on a set of 10,000 Monte Carlo ensemble Lund-Potsdam-Jena (LPJ) simulations for the northern high latitudes (45°N and polewards) for the period 1900–2100. The LPJ Dynamic Global Vegetation Model (LPJ-DGVM) was run under contemporary and future climates from four Special Report Emission Scenarios (SRES), A1FI, A2, B1, and B2, based on the Hadley Centre General Circulation Model (GCM), and six climate scenarios, X901M, X902L, X903H, X904M, X905L, and X906H from the Integrated Global System Model (IGSM) at the Massachusetts Institute of Technology (MIT). In the current dynamic vegetation model, some parameters are more important than others in determining the vegetation distribution. Parameters that control plant carbon uptake and light-use efficiency have the predominant influence on the vegetation distribution of both woody and herbaceous plant functional types. The relative importance of different parameters varies temporally and spatially and is influenced by climate inputs. In addition to climate, these parameters play an important role in determining the vegetation distribution in the region. The parameter-based uncertainties contribute most to the total uncertainty. The current warming conditions lead to a complexity of vegetation responses in the region. Temperate trees will be more sensitive to climate variability, compared with boreal forest trees and C3 perennial grasses. This sensitivity would result in a unanimous northward greenness migration due to anomalous warming in the northern high latitudes. Temporally, boreal needleleaved evergreen plants are projected to decline considerably, and a large portion of C3 perennial grass is projected to disappear by the end of the 21st century. In contrast, the area of temperate trees would increase, especially under the most extreme A1FI scenario. As the warming continues, the northward greenness expansion in the Arctic region could continue.

Introduction

Vegetation distribution plays a critical role in atmospheric dynamics through its effects on the earth's surface and on

atmospheric water cycling (D'Odorico et al. 2006; Saco et al. 2007; Thompson et al. 2010), carbon cycling (Lucht et al. 2006; Bounoua et al. 2010), and the surface energy budget (Kim and Wang 2005). In the northern high latitudes, the

large-scale vegetation distribution is significantly controlled by climate (Woodward 1987), which has had a clear warming trend for the past three decades (ACIA 2005; Chapman and Walsh 2007). This trend is expected to continue through the 21st century (Overland *et al.* 2004; Wolf *et al.* 2008).

Vegetation has been extensively observed to have a considerable response to this warming trend (Tape *et al.* 2006; Soja *et al.* 2007), and this response could be potentially stronger in the next hundred years (Gerber *et al.* 2004; Lucht *et al.* 2006; Walker *et al.* 2006). For instance, several studies have shown a clear warming temperature trend caused northward and upslope migration of treelines and an alteration in the current mosaic structure of boreal forests in the pan-Arctic region (Soja *et al.* 2007; Shuman and Shugart 2009). Some other studies presented an increase in the abundance and extent of shrubs responding to the climate warming in the Arctic region over the past several decades (Tape *et al.* 2006). Studies such as Tchebakova *et al.* (2009) predicted that the drier climate would cause the Siberian forest to decrease and shift northward. By the end of the 21st century, forest-steppe and steppe ecosystems were predicted to dominate more than half of the Siberian zone (Tchebakova *et al.* 2009).

The shift in vegetation distribution could alter the ecosystem energy balance and carbon cycle, further affecting the climate system (Chapin III *et al.* 2000; Beringer *et al.* 2005). For instance, Thompson *et al.* (2004) showed a dramatic decrease in albedo along the vegetation gradient from tundra to forest due to increasing canopy complexity. Consequently, this decrease in albedo could exert a positive feedback on radiative forcing and amplify atmospheric warming (Euskirchen *et al.* 2009). In addition, Bonan *et al.* (2003) has shown that the northward expansion of boreal forest into tundra could remove carbon from the atmosphere, thereby resulting in a climate cooling effect that compensates for the warming effect due to reduced surface albedo (Betts 2000). Many other studies (Wilmking *et al.* 2004; Walker *et al.* 2006; Euskirchen *et al.* 2009) also emphasize the complexity of plant feedbacks to climate change, however the uncertainty is considerably high (Cox *et al.* 2004; Schaphoff *et al.* 2006).

Assessing potential changes in vegetation distribution in boreal ecosystems is essential for understanding the environmental response to changing climate (Cramer *et al.* 2001). To date, a number of dynamic global vegetation models (DGVMs) are promising to project future changes in vegetation distribution, including its future structure and composition (Cramer *et al.* 2001; Sitch *et al.* 2003). However, uncertainties in model parameter values and uncertainties in the climate inputs lead to considerably uncertain results from these projections. Previous sensitivity and uncertainty studies have mostly focused on carbon and water balances (Knorr *et al.* 2005; Shuman and Shugart 2009; Tang and Zhuang 2009). Zaehle *et al.* (2005) has already examined the effects of parameter uncertainty on contemporary dis-

tributions of plant functional types (PFTs) estimated by the Lund-Potsdam-Jena DGVM (LPJ-DGVM; Sitch *et al.* 2003; Gerten *et al.* 2004). However, that study only reported the effects of climate change on the future distributions of tropical and temperate PFTs, based on only a single climate projection (IS92a HadCM2-SUL, Mitchell *et al.* 1995; Johns *et al.* 1997). This study aims to assess how high-latitude vegetation may respond under various input emission and climate scenarios over the 21st century, with a focus on how changes in model parameters may influence the model output, and how this uncertainty then compares to uncertainty generated from various climate inputs.

In this study, we built upon the Zaehle *et al.* (2005) study and quantified the uncertainty of the distribution of six PFTs found in the northern high latitudes (above 45°N) for several emission and climate scenarios using the LPJ-DGVM. These PFTs include temperate needleleaved evergreen (TNE) woody, temperate broadleaved evergreen (TBE) woody, temperate broadleaved summergreen (TBS) woody, boreal needleleaved evergreen (BNE) woody, boreal summergreen woody (BSW), and C3 perennial grass (CPG). We further examined how the interactions between climate inputs and parameterization affect the uncertainty of vegetation distributions (Overland *et al.* 2004; Weng and Zhou 2006; Tchebakova *et al.* 2009). By helping to better understand these interactions, this study represents a step toward better projection of vegetation distribution in the northern high latitudes. In addition, the quantification of probabilities of future vegetation distribution will be useful for ecosystem management and climate policy-making.

Method

Overview

Ten sets of climate change scenarios (see section Forcing Data) were used to drive LPJ-DGVM simulations in the northern high latitudes from 2001 to 2100. We first used a Latin Hypercube sampler (LHS) algorithm (Iman and Helton 1988) to develop 1000 sets of parameter values. We then conducted Monte Carlo (MC) simulations with LPJ-DGVM using each of the 1000 sets of parameter values under each of the 10 climate scenarios, for a total of 10,000 simulations. Based on these MC ensemble simulations, we quantitatively ranked parameter importance using the Partial Rank Correlation Coefficient (PRCC; Saltelli 2002; Marino *et al.* 2008), and described the spatial characteristics of their influences. We further examined the changes in the coverage of six PFTs during the 21st century under these climate scenarios. Finally, the sensitivity and uncertainty of changes in vegetation distributions to climate inputs and parameters were analyzed.

Description of LPJ-DGVM model

The LPJ-DGVM (Sitch *et al.* 2003; Gerten *et al.* 2004) is a process-based model that explicitly combines biogeography and biogeochemistry modeling approaches in a modular framework to simulate the spatio-temporal dynamics of terrestrial vegetation and land-atmosphere carbon and water exchanges. The LPJ-DGVM is driven by annual atmospheric CO₂ concentration and soil type, together with monthly climate data on air temperature, precipitation, and fractional cloud cover. It simulates photosynthesis, plant distribution, and competition for water and light of nine PFTs, which are defined using physiological parameters influencing growth. The establishment of plants is determined by bioclimatic limits. Mortality is governed by the interactions among light competition, low growth efficiency, heat mortality, and when bioclimatic limits are exceeded for an extended period.

In a single grid cell, each PFT is represented in terms of the overall foliage projective cover (FPC), which is determined by the product of individual FPC with crown area and population density (eq. 8 in Sitch *et al.* 2003). The individual FPC is calculated by the Lambert-Beer law (Monsi and Saeki 1953; Specht 1981). The sum of FPCs through all PFTs is between 0 and 1, with the difference between 1 and the sum of FPC for all PFTs representing the bare ground, or in other words, the area remaining to be colonized. Resource competition and differential responses to fire between PFTs influence their relative annual fractional cover and their population density. An individual PFT can migrate into new regions if its bioclimatic limits and competition with other PFTs allow establishment and successful plant growth (Gerber *et al.* 2004).

There are several rules and constraints for the calculation of FPC in a grid cell, according to Sitch *et al.* (2003). For instance, establishment takes place in each simulation year. The annual establishment of new individuals depends on the potential establishment rate (est_{max}), and on the current fraction of the grid cell devoid of woody plants. The annual establishment of new individuals also declines in proportion with canopy light attenuation when the sum of woody FPCs exceeds 0.95 and approaches 1, simulating a decline in establishment success with canopy closure (Prentice *et al.* 1992). The net effect of establishment is always a marginal increase in FPC. Another constraint for the calculation of FPC in a grid cell is that if the sum of woody FPCs is greater than unity in a particular year, the herbaceous biomass is first reduced, representing the competitive dominance of the taller-growing woody PFTs. In addition, heat stress, meaning depressed growth efficiency or a situation in which a PFT's bioclimatic limits are exceeded, could lead to additional mortality. The net effect of mortality is a marginal decrease in FPC, creating new space for PFT expansion by growth and establishment (Smith *et al.* 2001). More details about the LPJ model are presented in Sitch *et al.* (2003) and Gerten *et al.* (2004).

In LPJ, the actual intercellular-to-atmospheric CO₂ concentration ratio is simulated using a coupled photosynthesis and water balance canopy conductance scheme (Sitch *et al.* 2003). The elevated CO₂ concentration could enhance the plant productivity through two mechanisms. First, the increased intercellular partial pressure of CO₂ directly increases the assimilation of C3 plants, and inhibits photorespiration, thereby leading to more efficient photosynthesis. Second, CO₂ fertilization could lower stomatal conductance and reduce water loss during transpiration, thereby leading to a higher water use efficiency, which could further lengthen the growing season and increase net primary production (Prentice *et al.* 2001) and potentially enable the expansion of PFTs, even under drought conditions (Neilson and Drapek 1998). The LPJ-DGVM has been proven to reasonably assess vegetation redistribution due to environmental changes at large scales (Sitch *et al.* 2003; Schaphoff *et al.* 2006). Zaehle *et al.* (2005) has shown that there are a number of key parameters in the LPJ-DGVM that have strong effects on the establishment, growth, and mortality of PFTs. The values of these parameters, which are stratified by PFT, are normally determined through model calibration or empirical studies (Prentice *et al.* 1992; Smith *et al.* 2001).

Forcing data

A set of 0.5° × 0.5° gridded monthly climate data (air temperature, precipitation, and cloudiness), obtained from the Climate Research Unit (CRU) of the University of East Anglia (New *et al.* 2002; Mitchell and Jones 2005), were used to drive each simulation from 1901 to 2000. We used annual global atmospheric CO₂ concentration data from ice-core records and atmospheric observations (Keeling and Whorf 2005), and soil texture data derived from the FAO soil datasets (Zobler 1986; FAO 1991). Ten climate change scenarios (2001–2100) were used, including four from the Intergovernmental Panel on Climate Change (IPCC) emission scenarios, HadCM3 A1FI, A2, B1, and B2 (Nakicenovic *et al.* 2000), and six (X901M, X902L, X903H, X904M, X905L, X906H) estimated by the MIT Integrated Global System Model (IGSM; Sokolov *et al.* 2005) for two emission scenarios used in the Synthesis and Assessment Product 2.1 of the U.S. Climate Change Science Program (Clarke *et al.* 2007).

The IPCC HadCM3 A1FI, A2, B1, and B2 scenarios are distinct emission scenarios that reflect the implementation of specific policies for controlling anthropogenic greenhouse gases in the future (Table 1). The six MIT IGSM climate scenarios were derived from ensemble simulations of potential climate responses to two emissions scenarios (reference and level 1 stabilization cases, Clarke *et al.* 2007; Webster *et al.* 2009) simulated by the MIT Emission Prediction and Policy Analysis (EPPA) model (Paltsev *et al.* 2005). Results from three simulations for each emission scenario were

Table 1. Annual changing rate of air temperature ($^{\circ}\text{C}/\text{year}$) and precipitation (mm/year) in the 10 climate scenarios used in this study, and the emission range (ppmv) from 2001 (E_{2001}) to 2100 (E_{2100}). The annual changing rates are determined as the slopes from a least squares linear regression using hundred-year time series from 2001 to 2100, over the region ranging from 45°N to 90°N . All estimates for air temperature and precipitation were statistically significant at $P < 0.0001$.

Scenario	Air temperature ($^{\circ}\text{C}/\text{year}$)			Precipitation (mm/year)			Emission (ppmv)
	Estimate	95% CI	R^2	Estimate	95% CI	R^2	(E_{2001} , E_{2100})
A1FI	0.136	(0.133, 0.140)	0.98	0.166	(0.161, 0.170)	0.98	(368.448, 925.531)
A2	0.106	(0.102, 0.109)	0.98	0.127	(0.123, 0.131)	0.98	(368.949, 818.891)
B1	0.056	(0.055, 0.057)	0.99	0.073	(0.071, 0.074)	0.99	(368.936, 531.371)
B2	0.069	(0.068, 0.069)	1.00*	0.086	(0.086, 0.087)	1.00*	(368.903, 603.702)
X901M	0.073	(0.071, 0.076)	0.97	0.117	(0.113, 0.122)	0.97	(370.957, 911.319)
X902L	0.057	(0.055, 0.058)	0.98	0.087	(0.084, 0.090)	0.97	(371.228, 947.953)
X903H	0.094	(0.090, 0.098)	0.96	0.148	(0.142, 0.155)	0.95	(371.281, 905.128)
X904M	0.019	(0.018, 0.020)	0.92	0.035	(0.032, 0.037)	0.87	(370.957, 476.506)
X905L	0.013	(0.012, 0.014)	0.85	0.023	(0.021, 0.026)	0.80	(371.228, 490.717)
X906H	0.027	(0.026, 0.028)	0.96	0.047	(0.044, 0.050)	0.93	(371.281, 472.149)

*Round to 1.00, not exactly equal to 1.

chosen from the ensemble simulations to provide climate inputs to LPJ-DGVM based on three sets of values for model parameters describing climate sensitivity, rate of heat uptake by the deep ocean, and the strength of aerosol forcing. One set represents median (M) values from the distribution of climate parameters obtained by Forest *et al.* (2008) and used in Sokolov *et al.* (2009). Simulation with this set of model parameters produces surface warming close to a median of the distribution obtained by Sokolov *et al.* (2009). The two other sets are the values of the parameters used in simulations that produce changes in surface air temperatures (SAT) close to the lower and upper bounds of the 90% range in climate response, or low (L) and high (H) climate response, respectively, obtained in the simulations for each emissions scenario (Sokolov *et al.* 2009). X901M, X902L, and X903H correspond to the reference emissions scenario, and represent the median, low, and high climate response, respectively (Table 1). Similarly, X904M, X905L, and X906H correspond to the level 1 stabilization scenario, and represent the median, low, and high climate response, respectively.

The annual changing rate of air temperature and precipitation for each climate scenario in the northern high latitudes are presented in Table 1, based on a simple linear regression for a time series of air temperature and precipitation, respectively. In particular, the mean annual air temperature between 2001 and 2100 over the domain significantly ($P < 0.0001$) increased throughout all scenarios. The largest increase ($0.136^{\circ}\text{C}/\text{year}$) is from the A1FI climate scenario, and the smallest increase ($0.013^{\circ}\text{C}/\text{year}$) is from the X905L climate scenario. Precipitation also significantly ($P < 0.0001$) increased across all climate scenarios, with the greatest increase ($0.166 \text{ mm}/\text{year}$) occurring in the A1FI simulation and the smallest increase ($0.023 \text{ mm}/\text{year}$) occurring in the X905L. The combination of these scenarios permits a robust

analysis of the potential future response of vegetation dynamics to climate changes. In addition, the IGSM air temperature increases faster when the latitudes are higher. In contrast, the IPCC data have a much smoother and more consistent temporal increasing trend for annual temperature over the study domain.

As shown in Table 1, each scenario includes a projection of atmospheric CO_2 , starting from around 369 ppmv (IPCC) and 371 ppmv (IGSM) in 2001 and increasing to the magnitude of warming in year 2100, with the highest increase in the X902L scenario (948 ppmv) and the lowest increase in the X906H scenario (472 ppmv).

MC simulations

The Latin Hypercube Sampling technique (LHS; Iman and Helton 1988) is based on MC simulations and uses a stratified sampling approach to efficiently estimate the output statistics (Van Griensven *et al.* 2006). With this approach, n samples were drawn for k random variables $\theta_1, \dots, \theta_k$ over the feasible space described by their probability distributions. Following Tang and Zhuang (2009), three steps were performed to conduct the sampling. First, the distribution of each variable was subdivided into n strata with a probability of occurrence equal to $1/n$. For uniform distributions, the variable range was subdivided into n equal intervals. Second, in each interval, one value was randomly selected with respect to the probability density in the interval. Third, the n values obtained for θ_1 were randomly paired with those for θ_2 . Finally, these n pairs were further randomly paired with the n values of θ_3 to form n triplets, and so forth, until n nonoverlapping realizations were created.

In this study, we used the LHS method to generate 1,000 sets of parameter samples for the LPJ MC simulations with each

Table 2. Key Lund-Potsdam-Jena Dynamic Global Vegetation Model (LPJ-DGVM) parameters involved in this study.

Parameter	Standard	Range	Description	Reference
k_{beer}	0.5	[0.4, 0.7]	Light extinction coefficient	Larcher (2003)
θ	0.7	[0.2, 0.996]	Photosynthesis colimitation shape parameter	Collatz et al. (1990), Leverenz (1988)
k_{mort1}	0.05	[0.01, 0.01]	Asymptotic maximum mortality rate (yr^{-1});	Null
k_{mort2}	0.5	[0.2, 0.5]	Growth efficiency mortality scalar	Null
α_a	0.5	[0.3, 0.7]	Photosynthesis scaling parameter (leaf to canopy)	Haxeltine and Prentice (1996)
α_{c3}	0.08	[0.02, 0.125]	Intrinsic quantum efficiency of CO_2 uptake in C3 plants	Farquhar et al. (1980), Hallgren and Pitman (2000)
k_{allom1}	100	[75, 125]	Crown area = $k_{\text{allom1}} \times \text{height}^{k_{\text{allom3}}}$	Null
k_{allom3}	0.67	[0.5, 0.8]	Height = $k_{\text{allom2}} \times \text{diameter}^{k_{\text{allom3}}}$	Huang et al. (1992)
k_{rp}	1.6	[1.33, 1.6]	Crown area = $k_{\text{allom1}} \times \text{height}^{k_{\text{rp}}}$	Enquist and Niklas (2002), Whitehead et al. (1994)
$k_{\text{la:sa}}$	4000	[2000, 8000]	Leaf to sapwood area ratio	Waring et al. (1982)
CA_{max}	15.0	[7.5, 30.0]	Maximum woody PFT crown area	Null
r_{growth}	0.25	[0.15, 0.4]	Growth respiration per unit Net Primary Production (NPP)	Sprugel et al. (1995)
est_{max}	0.12	[0.05, 0.3]	Maximum sapling establishment rate [$\text{m}^{-2}\text{yr}^{-1}$]	Null

of the 10 climate datasets. Ranges of parameter values were assigned based on either literature review or estimates (Table 2). We neglected the correlations among the parameters when performing the sampling and each parameter was assumed to follow a uniform distribution. This assumption could have led to an overestimation of uncertainty and reduce the confidence in model results (Helton and Davis 2000; Zaehle et al. 2005). Future efforts could apply the inverse method to introduce parameter correlations and further constrain the model uncertainties (Kaminski et al. 2002; Rayner et al. 2005).

For each LHS set, the LPJ simulation was started from “bare ground,” where no plant biomass existed. Then following Sitch et al. (2005), a “spin-up” simulation of thousand years was conducted using a cyclic replication of CRU monthly climatology from 1901 to 1930 to reach approximate equilibrium with respect to carbon pools and preindustrial stable vegetation cover. Then, the transient historical climate (CRU, 1901–2000) and projected climate change scenarios (e.g., IPCC A2, 2001–2100) were used to drive the model. We ran the simulations for all 10 climate change scenarios and compared the FPC output of each PFT. The temporal trends of all PFT area changes were presented for the current century. We also compared results from the MC ensemble simulations with those from control simulations (with default parameter values from previous literature, Sitch et al. 2003), both driven by 10 different climate scenarios.

Sensitivity and uncertainty analysis

We used the PRCC (Marino et al. 2008; Saltelli 2002), a sensitivity index based on linear (respectively monotonic)

assumptions, to identify the relative importance of the contribution from a particular parameter to the simulation uncertainty. We briefly describe how we calculated the PRCC below.

A correlation coefficient (CC) between input x_j and output y was calculated as

$$CC = \frac{\text{cov}(x_j, y)}{\sqrt{\text{var}(x_j)\text{var}(y)}} = \frac{\sum_{i=1}^N (x_{ij} - \bar{x})(y_i - \bar{y})}{\sqrt{\sum_{i=1}^N (x_{ij} - \bar{x})^2 \sum_{i=1}^N (y_i - \bar{y})^2}}, \quad j = 1, 2, \dots, k. \quad (1)$$

where $\text{cov}(x_j, y)$ represents the covariance between x_j and y , while $\text{var}(x_j)$ and $\text{var}(y)$ are the variances of x_j and y , respectively. The respective sample means of x and y are \bar{x} and \bar{y} .

Partial correlation characterizes the linear relationship between input x_j and output y after the linear effects on y of the remaining inputs are discounted. The partial correlation coefficient (PCC) between x_j and y represents the CC between two residuals, $(x_j - \hat{x}_j)$ and $(y - \hat{y})$, where \hat{x}_j and \hat{y} are the estimated values of the linear regression

$$\hat{x}_j = c_0 + \sum_{\substack{p=1 \\ p \neq j}}^n c_p x_p, \quad \hat{y} = b_0 + \sum_{\substack{p=1 \\ p \neq j}}^n b_p x_p. \quad (2)$$

To measure the potential nonlinear but monotonic relationships between x_j and y , we calculated the PRCC, which

Table 3. Partial Rank Correlation Coefficients (PRCCs) for the projected area of a specific plant functional type and each input parameter. These PRCCs are calculated using the average foliage projective cover (FPC) outputs across all climate scenarios.

Rank	TNE		TBE		TBS		BNE		BSW		CPG	
	Parameter	PRCC	Parameter	PRCC	Parameter	PRCC	Parameter	PRCC	Parameter	PRCC	Parameter	PRCC
1	α_{C3}	0.678	α_{C3}	0.784	α_{C3}	0.697	k_{beer}	-0.781	α_{C3}	0.778	k_{beer}	0.899
2	k_{beer}	-0.610	k_{rp}	-0.655	k_{beer}	-0.614	α_{C3}	0.373	k_{beer}	-0.657	α_{C3}	-0.728
3	k_{rp}	-0.528	α_a	0.512	k_{rp}	-0.599	est_{max}	0.294	k_{rp}	-0.533	k_{rp}	0.655
4	$k_{la:sa}$	-0.467	k_{beer}	0.511	α_a	0.407	$k_{la:sa}$	-0.239	α_a	0.502	est_{max}	-0.506
5	α_a	0.383	$k_{la:sa}$	-0.363	est_{max}	0.383	k_{rp}	-0.206	$k_{la:sa}$	-0.298	k_{allom1}	-0.443
6	k_{allom1}	0.296	k_{allom1}	0.362	k_{allom1}	0.351	k_{allom1}	0.181	r_{growth}	-0.291	$k_{la:sa}$	0.438
7	est_{max}	0.278	r_{growth}	-0.291	r_{growth}	-0.317	α_a	0.171	k_{allom1}	0.266	α_a	-0.418
8	θ	0.096	est_{max}	0.269	k_{allom3}	0.301	k_{mort1}	-0.129	k_{mort1}	-0.255	k_{mort1}	0.28
9	k_{allom3}	0.085	θ	0.2	$k_{la:sa}$	-0.212	CA_{max}	0.098	est_{max}	0.251	k_{allom3}	-0.243
10	CA_{max}	-0.085	k_{allom3}	0.173	θ	0.189	k_{allom3}	0.038	k_{allom3}	0.196	θ	-0.175
11	r_{growth}	-0.034	CA_{max}	-0.13	k_{mort1}	-0.138	r_{growth}	-0.033	θ	0.165	r_{growth}	0.144
12	k_{mort2}	-0.014	k_{mort1}	0.114	CA_{max}	-0.105	θ	-0.012	CA_{max}	-0.075	k_{mort2}	-0.141
13	k_{mort1}	-0.006	k_{mort2}	-0.111	k_{mort2}	0.013	k_{mort2}	-0.002	k_{mort2}	0.063	CA_{max}	0.007

TNE, temperate needleleaved evergreen tree; TBE, temperate broadleaved evergreen tree; TBS, temperate broadleaved summergreen tree; BNE, boreal needleleaved evergreen tree; BSW, boreal summergreen woody tree; CPG, C3 perennial grass.

is a robust measure as long as little to no correlation exists between inputs (Marino et al. 2008). It represents a partial correlation on rank-transformed data (x_j and y are first rank transformed and then the linear regression models in eq. 2 are built). A higher positive PRCC indicates that the parameter has a greater positive control on the response variable of interest, while a higher (absolute value) negative PRCC indicates a greater negative control. In contrast, a PRCC value close to 0 indicates a poor effect on the response variable of interest. The free software package R version 2.11.1 and the “sensitivity” package for R were used for the calculation of PRCCs (Pujol et al. 2008; RDC–Team 2010).

In this study, of the total 36 parameters, we selected 13 key parameters (Table 2), which are demonstrated as the most important ones in the determination of FPC in Zaehle et al. (2005). A detailed definition of each parameter can be found in Zaehle et al. (2005). Parameter importance of these 13 parameters was determined for all 0.5×0.5 grid cells (totally 25,063 cells) in the region. We used the mean hundred-year FPC values (from 2001 to 2100) to analyze the parameter importance for each PFT. Since LPJ uses the same parameters to describe a specific PFT in different regions experiencing distinct climate conditions, it is necessary to test the sensitivity of parameter importance to climate inputs. Based on 10,000 MC simulations, we compared the parameter importance among the ten different climate change scenarios. To investigate how vegetation dynamics are sensitive to climate change, we examined the spatial pattern of climate change and how it is associated with the change of each PFT in the region north of 45°N.

Under each climate change scenario, we produced the mean, variance, and the 90% confidence interval (CI) of the

projected vegetation coverage for a specific PFT, based on the 1000 MC simulations. The variance and the 90% CI represent the parameter-based uncertainty in modeled vegetation distribution. We also calculated the mean and variance associated with the climate-induced uncertainties under each climate scenario.

Results

Parameter importance

Parameters controlling the competitive strength of a specific PFT and the interspecies competition balance determine the variation of FPC. Unlike Zaehle et al. (2005), we included the relative parameter importance in determining the FPC of each individual PFT, not only for the dominant, subdominant, and herbaceous PFTs in grid cells.

Based on the absolute value of the PRCC, we ranked the importance of the 13 selected parameters (Table 3). The most influential parameters in determining vegetation distribution include α_{C3} , k_{rp} , and k_{beer} . Parameters of secondary importance include est_{max} , $k_{la:sa}$, α_a , and k_{allom1} . The remaining six parameters are relatively less important than the parameters in the first two groups, and are organized in the third importance group. Table 3 shows that the ranking of relative parameter importance could vary among different PFTs; the general order, however, is similar.

For a certain PFT, the influence of each parameter on the corresponding FPC output exhibits a pattern of distinct spatial characteristics. For example, k_{beer} has a relatively low influence on the CPG coverage in the high Arctic region (Fig. 1a), and a high influence on CPG coverage in the southern region (e.g., Canadian boreal forest). This implies that

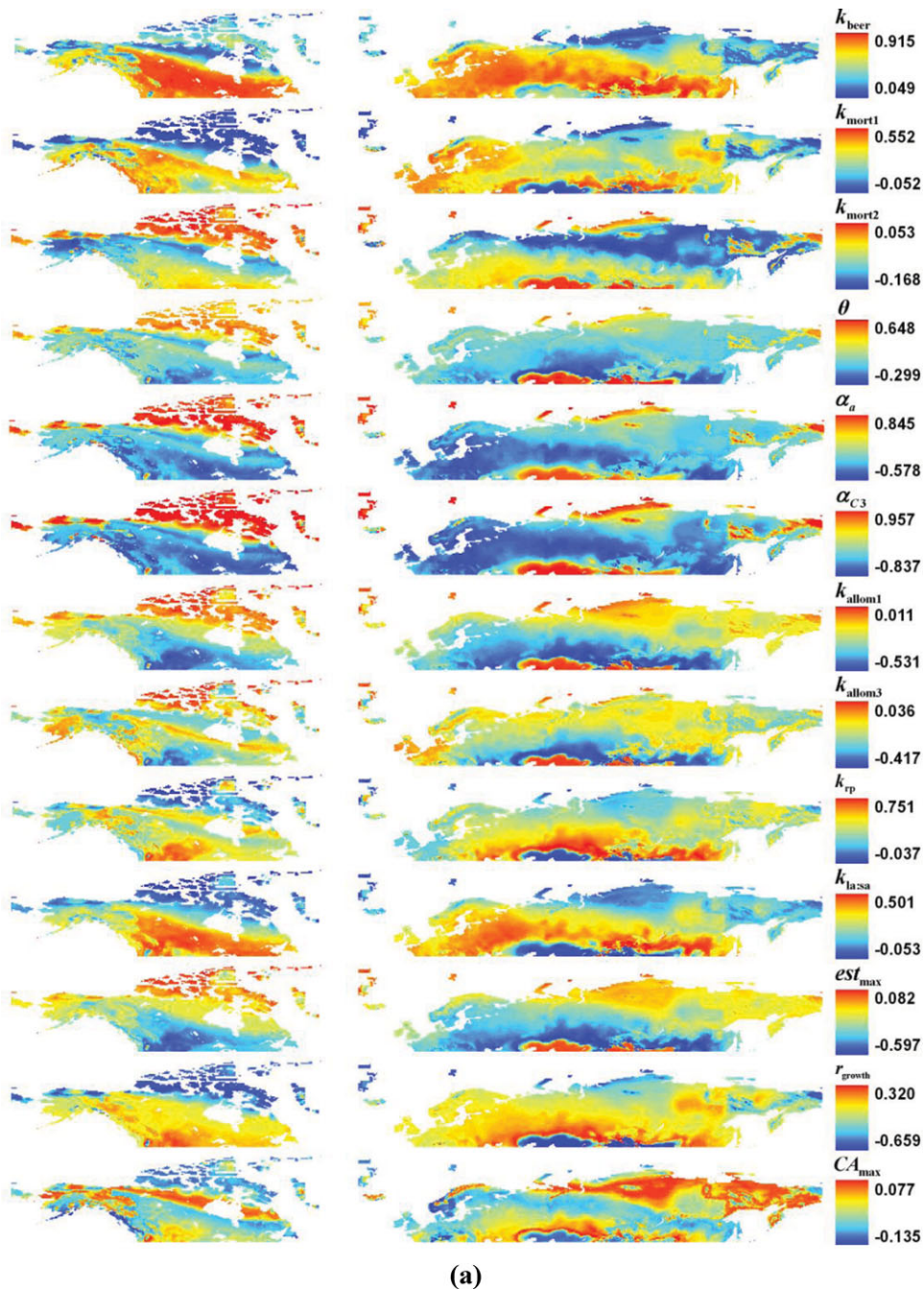


Figure 1. Parameter importance measured as Partial Rank Correlation Coefficient (PRCC) of 13 parameters for the foliage projective cover (FPC) of (a) C3 perennial grass, and (b) boreal needleleaved evergreen trees based on 10,000 Lund-Potsdam-Jena Dynamic Global Vegetation Model (LPJ-DGVM) ensemble simulations under 10 different climate change scenarios in the northern high latitudes. *Note.* For a description of each parameter refer to Table 2. If a specific plant functional type (PFT) never appears in a grid cell, the grid cell is then not considered when mapping.

the increased available radiation as a result of reduced PAR within the canopy has less effect on the FPC of CPG in the very north region. Among different PFTs, the spatial variation in the influence of parameters exhibits both similarities

and differences. For instance, unlike CPG, the BNE coverage in the Siberia zone is strongly controlled by k_{beer} (Fig. 1b). This implies that in the Siberia zone, the elevated available radiation due to reduced canopy PAR exerts less of an effect

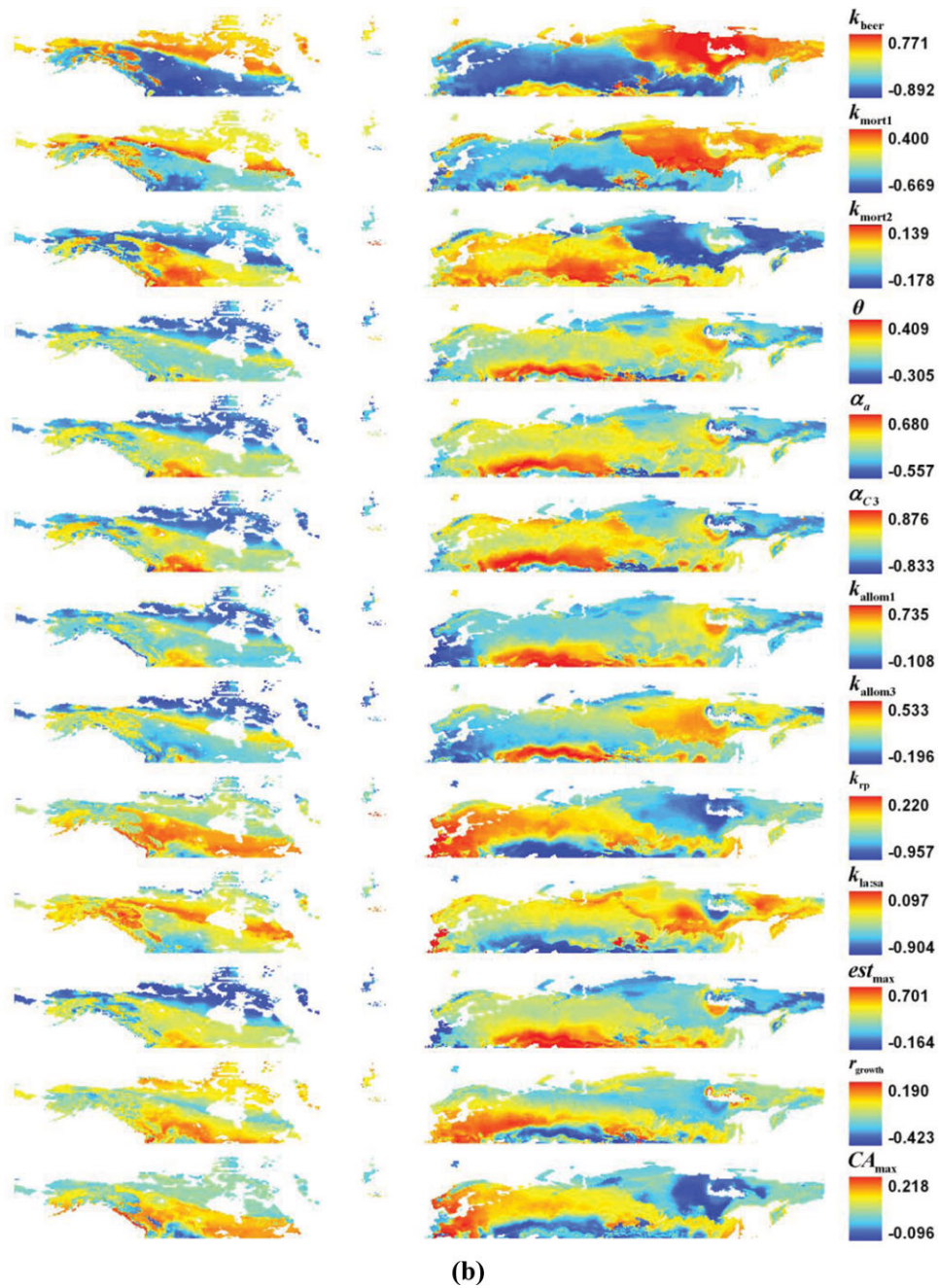
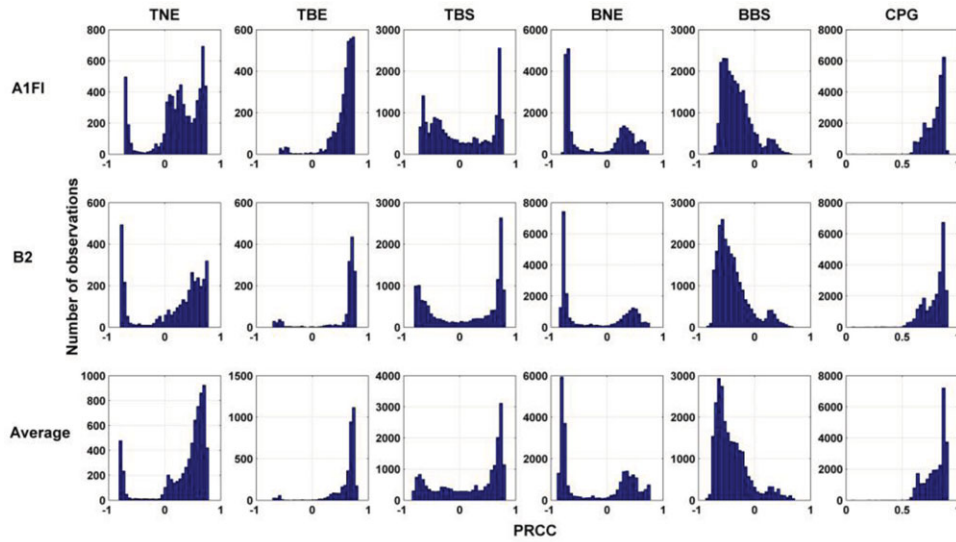


Figure 1. Continued.

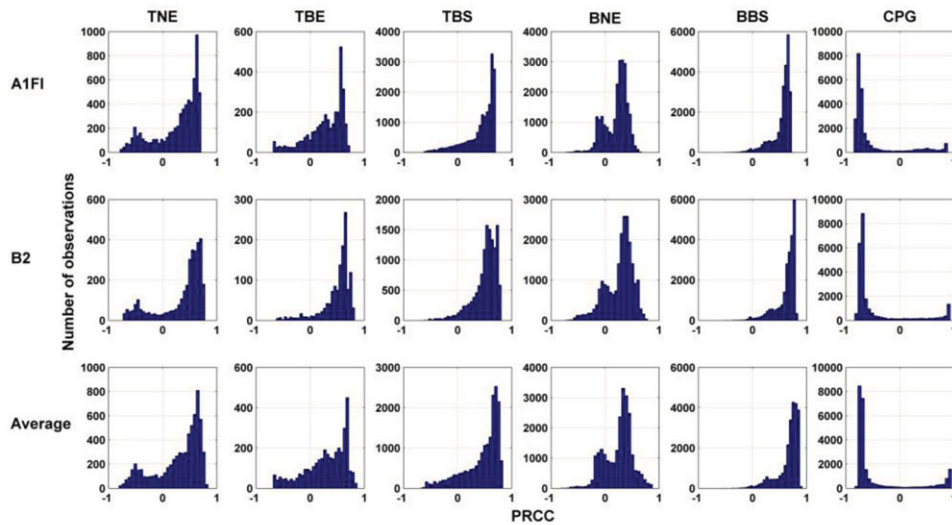
on the FPC of CPG than on that of BNE trees. Other parameters also exhibit quite different regional characteristics in the determination of the FPC output of each PFT.

Our study shows that climate input potentially affects the expansion of influence of all 13 parameters. Based on PRCCs of all 25,063 grid cells, Figure 2a shows that histograms of the PRCC values of k_{beer} could be different among different

climates (e.g., A1FI and A2). For example, under the A1FI climate scenario, more grid cells were positively affected by k_{beer} for the TNE coverage, compared with the A2 scenario. A major reason is that under the A1FI condition, the TNE trees could survive in more grid cells, therefore contributing to the larger extent of k_{beer} influence. Furthermore, distributions of PRCCs for k_{beer} influencing the TNE coverage are different



(a)



(b)

Figure 2. Histogram of the PRCCs of (a) k_{beer} and (b) α_{C3} for six PFTs in all grid cells in which a specific PFT survives from 2001 to 2100. From top to bottom, results are determined under A1FI, B2, and averaged climate scenarios. From left to right, results are for temperate needleleaved evergreen (TNE) woody, temperate broadleaved evergreen (TBE) woody, temperate broadleaved summergreen (TBS) woody, boreal needleleaved evergreen (BNE) woody, boreal summergreen woody (BSW), and C3 perennial, respectively.

between the A1FI and A2 conditions. Similar to k_{beer} , the expansion of α_{C3} could also be affected by climates. As shown in Figure 2b, less grid cells were influenced by α_{C3} for the TBE coverage under the A2 climates, than those under the A1FI climate. For different PFTs, the distribution of PRCCs for a certain parameter is quite different under the same climate scenario. Additionally, among different parameters,

the distributions of PRCCs are also very different for the coverage of a specific PFT under the same climate.

To examine the potential effect of climate on parameter importance, we investigated the relationship between PRCCs and a specific climate input (i.e., air temperature or precipitation). For the total 25,063 grid cells, Figure 3 exhibits the PRCC values (for BNE trees) versus the mean annual air

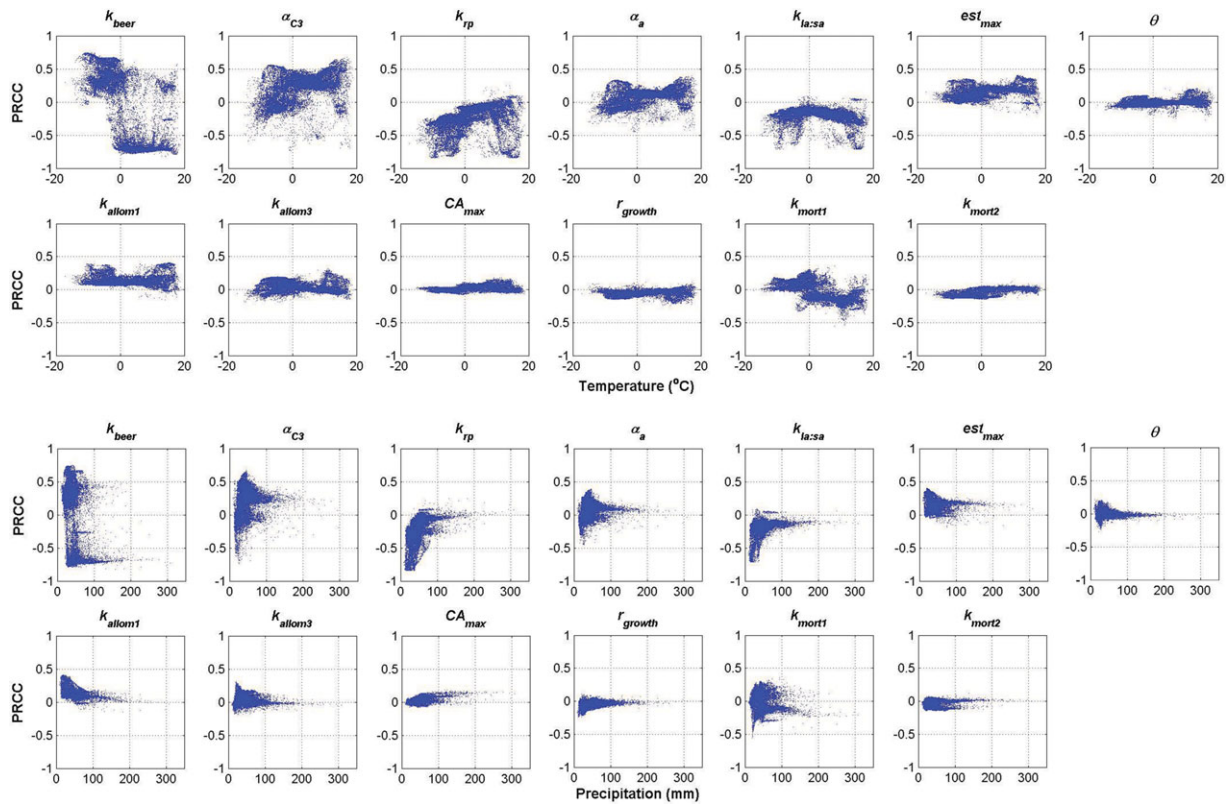


Figure 3. Scatter plot of PRCCs versus mean air temperature (°C) or mean precipitation (mm) for all grid cells (out of total 25,063 grids), which have valid PRCC values for BNE woody under the A1FI scenario.

temperature or precipitation from the A1FI scenario. We found that some parameters (e.g., k_{beer} and k_{tp}) are sensitive to temperature when determining the BNE coverage. In particular, k_{beer} generally exerts a positive effect when temperature is below zero and a negative effect when temperature is above zero (Fig. 3). The relative importance (measured using PRCC) of k_{tp} has a general decreasing trend as temperature increases. Parameters such as α_{C3} , k_{tp} , and α_a seem to be vulnerable to precipitation as shown in Figure 3. These parameters exhibit a strong influence (relatively high absolute value for PRCC) in grid cells with low precipitation, and moderate influence in grid cells with high precipitation. However, parameters (e.g., k_{mort2}) exhibiting a flat scatter plot had low sensitivity to air temperature or precipitation changes. Under a different climate (e.g., B2), the scatter plot could be slightly, but not significantly changed, and the pattern of the plot will remain almost the same in all cases. For instance, the responses of k_{beer} to air temperature and precipitation are similar when the B2 scenario is used, compared with the responses when the A1FI scenario is used (Fig. 4).

Parameter-induced uncertainties in modeling coverage for each PFT

Under a certain climate, the uncertainty in projecting vegetation coverage is attributed to the uncertainty in parameter values or their combinations, especially the most important ones. Figure 5 shows considerable parameter-induced uncertainty in each PFT's coverage under different climates. The upper and lower bounds of the uncertainty range are determined by the 90% and 10% quantiles, respectively. With a certain combination of parameters, different climate inputs resulted in diverged PFT coverage since the changing rate and magnitude of air temperature, precipitation, and CO₂ concentration are quite different among different climate scenarios (Table 1). Because the range of parameter-induced uncertainty is determined by the combination of extreme parameter values, a slight divergence in the uncertainty range is found among different climates (Fig. 5). For example, under the reference emission scenario, the intense climate (i.e., X903H) results in the largest uncertainty in the projected TNE, TBE, and TBS coverage. X901M and X902L result in

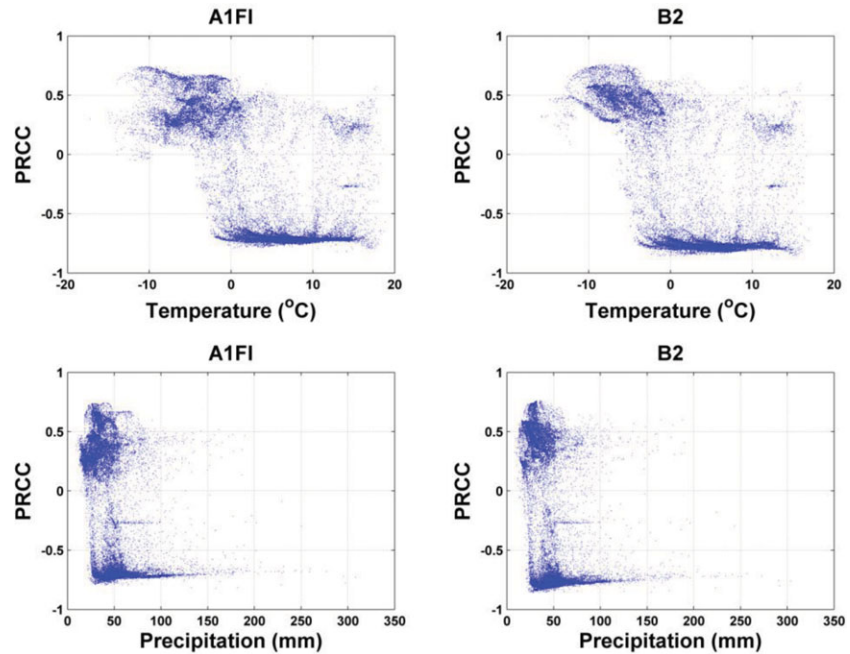


Figure 4. Scatter plot of PRCCs for k_{beer} versus mean air temperature ($^{\circ}\text{C}$) or mean precipitation (mm) for all grid cells (out of total 25,063 grids), which have valid PRCC values for BNE woody under the A1FI and B2 scenarios.

the moderate and lowest variation of the vegetation coverage, respectively. However, variations in BNE, BSW, and CPG areas exhibit no clear differences among these three different climate scenarios. Under the stabilized emission scenario, the uncertainty ranges for all six PFTs are very similar through the high (X906H), moderate (X904M), and low (X905L) climate conditions.

Compared with control outputs, the ensemble mean outputs always underestimated the TNE, BNE, and BSW coverage, and overestimated the CPG coverage (Fig. 5). Nevertheless, the mean ensemble outputs for TBE and TBS coverage are both comparable to those from control simulations. This suggests that current LPJ parameterization for TBE and TBS plants leads to an “average” output as a consequence of the large amount of combinations of parameter values.

From Figure 5, we found that the parameter-based uncertainty in TNE coverage is approximately equivalent to 60% \sim 70% of the mean ensemble output. A large part of this uncertainty is due to uncertainties in α_{C3} (PRCC = 0.678), k_{beer} (PRCC = -0.610), k_{rp} (PRCC = -0.528), and $k_{\text{la:sa}}$ (PRCC = -0.467; Table 3). TNE coverage seems to be most likely underestimated in our ensemble simulations, compared with the control output. For TBE trees, besides the above four parameters, the variation of k_{rp} (PRCC = -0.655) also contributes much to the uncertainty of TBE coverage. The uncertainty range of the TBE area is close to 80% of the mean output. Variations in α_{C3} (PRCC = 0.697), k_{beer} (PRCC = -0.614), and k_{rp} (PRCC = -0.599) significantly influence the uncertainty of TBS coverage, of which the projected mean coverage is in agreement with that of the control simulation.

The variation due to parameter-based uncertainty exists in a range equivalent to 70% of the mean coverage. For BNE plants, k_{beer} (PRCC = -0.781) is the most important parameter in determining the projected BNE coverage. For BSW and CPG, α_{C3} , k_{beer} , and k_{rp} mostly control the uncertainty ranges. Variations due to parameter-based uncertainty approximately equal to 80% of the mean values.

Emission- and climate-induced uncertainty

Simulations driven by four IPCC emission scenarios (i.e., A1FI, A2, B1, and B2) provide an opportunity to explore the influence of emission scenarios on vegetation distribution. In Figure 6, differences in coverage of a certain PFT among different scenarios could be related to variability in emission scenarios. In addition, the intense, moderate, and weak scenarios correspond, respectively, to the largest, moderate, and lowest uncertainties in projecting TNE, TBE, and TBS coverage (Fig. 5). However, for BNE, BSW, and CPG, uncertainty ranges are similar among these four emission scenarios.

The MIT IGSM simulations represent the climate uncertainty that might result from a single emissions scenario (e.g., “reference” and “stabilization”). Thus, unlike the simulations using IPCC emissions scenarios, the results from the MIT IGSM simulations can be used to account for both climate uncertainty and the LPJ parameter uncertainty on the projected area of PFTs. Here, we used the differences between results from the high climate response (e.g., X903H and X906H) or the low climate response (e.g., X902L and X905L), and those from median climate response (e.g., X901M and X904M) to

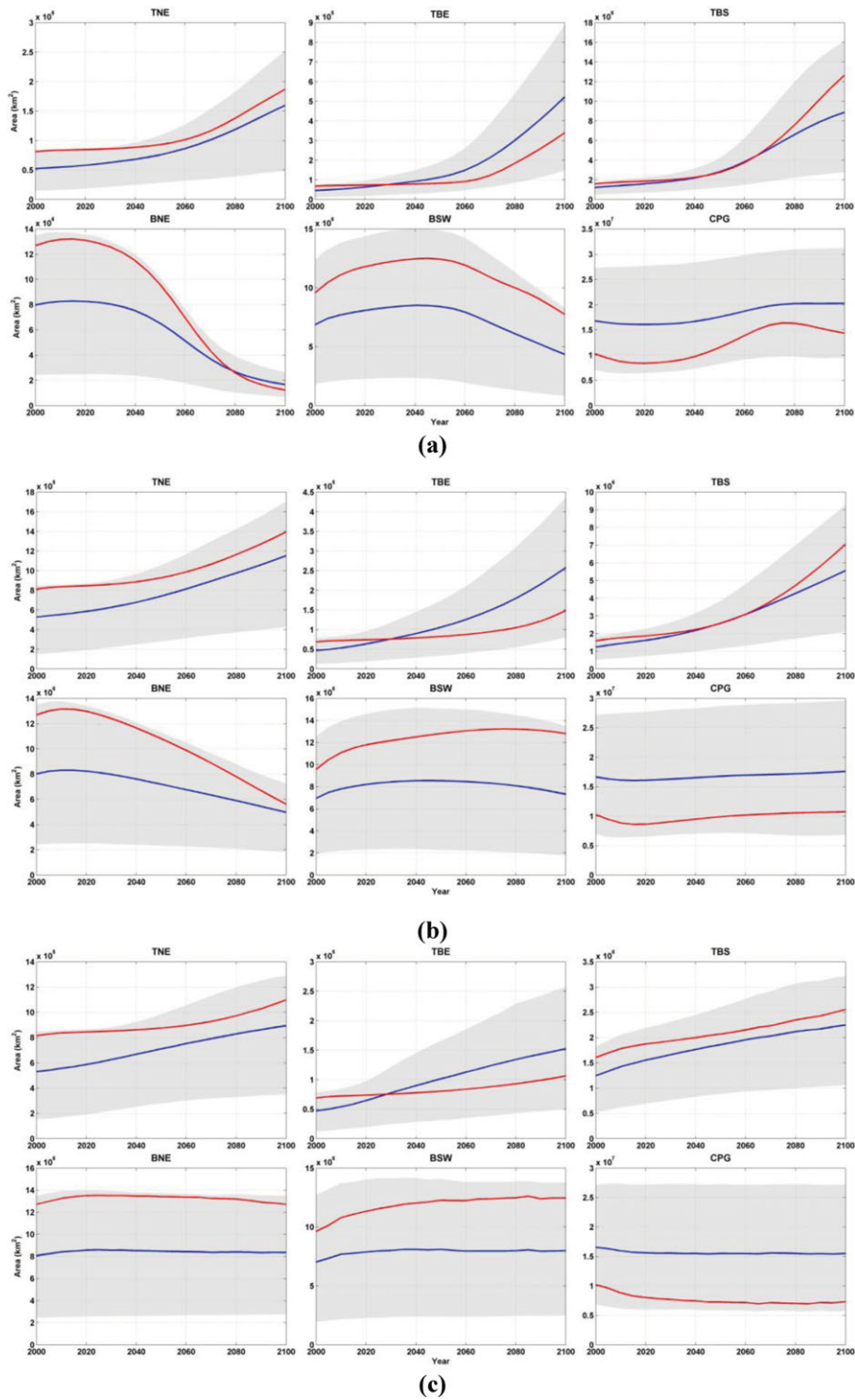
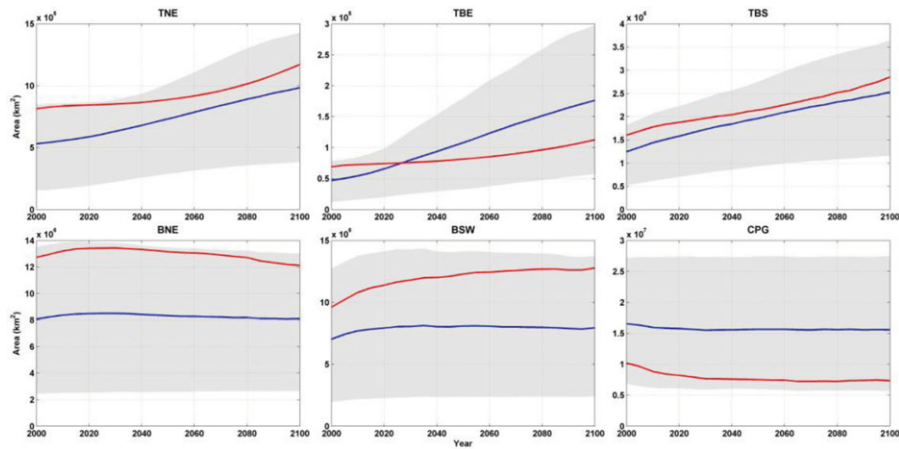
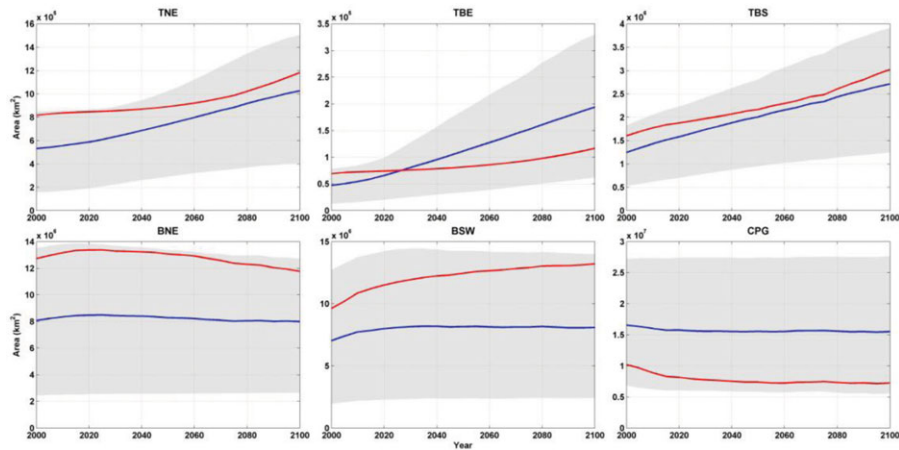


Figure 5. The averaged coverage (km²) of each PFT from the Monte Carlo (MC) ensemble simulations (blue lines) with their uncertainty ranges (shaded regions), and results from control simulations (red lines) using default parameter values from Sitch *et al.* (2003) from 2001 to 2100, under (a) A1FI, (b) B2, (c) X905L, (d) X904M, and (e) X906H scenarios. The upper and lower bounds of the uncertainty range are determined by the 90% and 10% quantiles based on the MC ensemble simulations. TNE, temperate needleleaved evergreen; TBE, temperate broadleaved evergreen; TBS, temperate broadleaved summergreen; BNE, boreal needleleaved evergreen; BSW, boreal summergreen woody; CPG, C3 perennial grass.



(d)



(e)

Figure 5. Continued.

determine the climate-induced uncertainty range. Under a certain emission scenario (e.g., reference emission), differences in coverage of a certain PFT among different climates (X901M, X902L, X903H), as shown in Figure 6, could be related to climate uncertainties. Compared with the parameter-induced uncertainty (Fig. 5), the climate-induced uncertainty is much smaller, but still significant. Comparing the results from two different emission scenarios (reference vs. stabilization) as shown in Figure 6, we found that the difference in emission scenarios contributes much to the variation of each PFT coverage. The emission-induced uncertainty is even larger than the climate-induced uncertainty, but still smaller than the parameter-induced uncertainty.

To explore the various vegetation responses to climate, we also examined the relationship between FPC outputs and a specific climate factor (i.e., air temperature and precipitation). Using FPC outputs (averaged from 2001 to 2100) from all grid cells (which total 25,063), we performed a simple

linear regression between FPC and mean air temperature, mean precipitation, slope of air temperature, and slope of precipitation, separately. An obvious correlation exists between the TBS coverage with the mean air temperature ($R^2 > 0.55$ under all climates). However, the slope of air temperature shows little correlation with FPC outputs. Although the mean precipitation shows no strong correlation on FPCs of all PFTs, a modest linear relationship exists between slopes of precipitation for four IPCC HadCM3 climates as well as for TBS coverage ($R^2 > 0.3$).

Projection of future vegetation distribution

Temporal changes

Changes of vegetation distribution in the current century are projected to be different under different climate scenarios (Fig. 6). Generally, higher emission scenarios (i.e., reference emission) result in a higher changing rate of vegetation

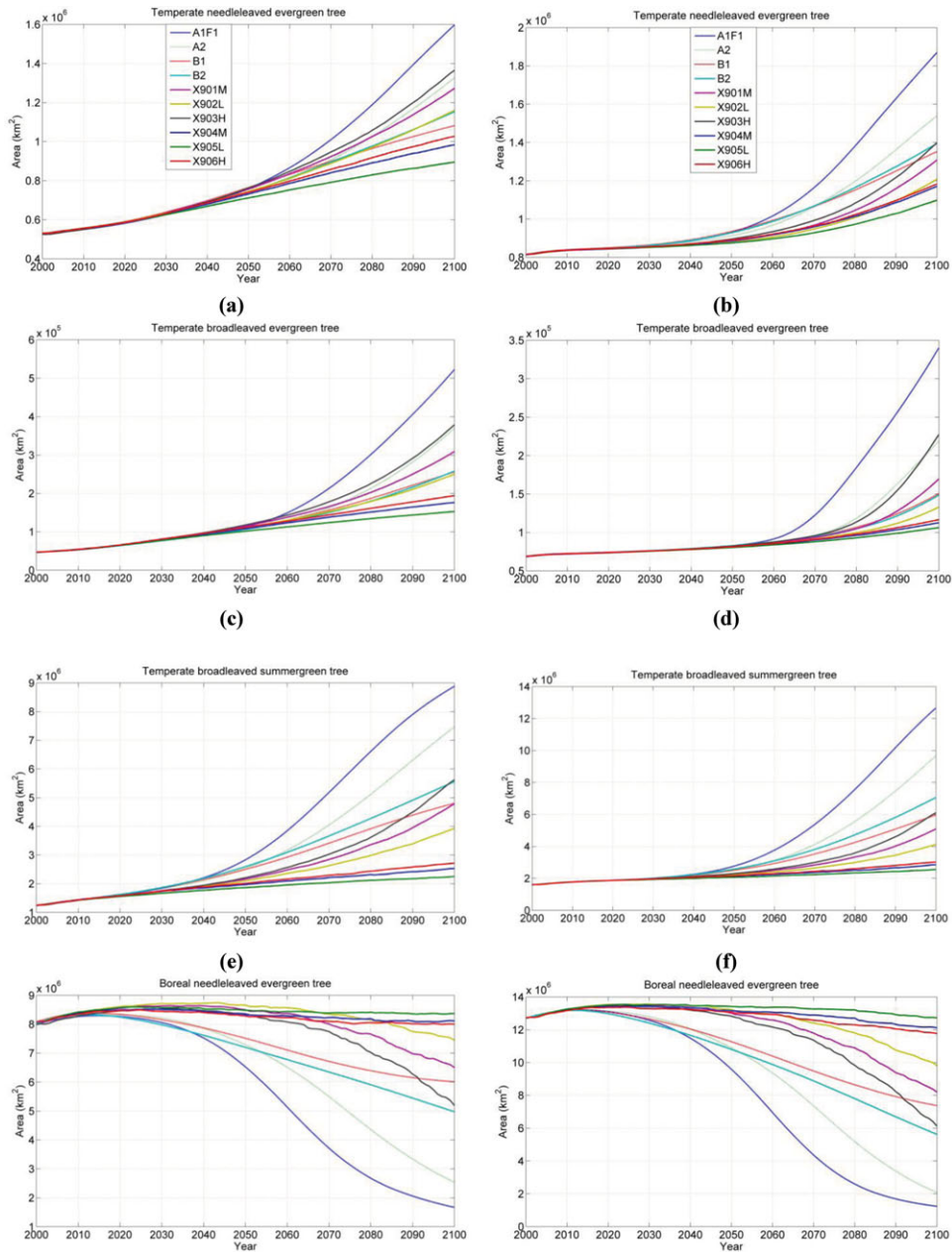


Figure 6. Temporal change of simulated mean areas (km², left) and results from the control simulations (right) of six PFTs under 10 climate change scenarios, from 2001 to 2100. X901M, X902L, and X903H correspond to the reference emission scenario; X904M, X905L, and X906H correspond to the stabilization emission scenario.

redistribution, compared with those under the lower emission scenarios (i.e., stabilized emission scenario).

In particular, for TNE trees, both ensemble simulations (Fig. 6a) and the control simulation (Fig. 6b) predicted a significant area increase across all climates, with the highest change occurring under the A1FI climate (an approximately 1.1×10^6 km² increase) and the lowest change oc-

curing in the X905L climate (an approximately 0.2×10^6 km² increase). A similar trend was projected for TBE plants. The projected TBS area exhibited a clear increasing trend under seven climate scenarios, which included all except the three climates under the stabilization emission scenario (Fig. 6e and 6f). Unlike the TBS trees, the BNE coverage had an obvious shrinking trend under most climates, except

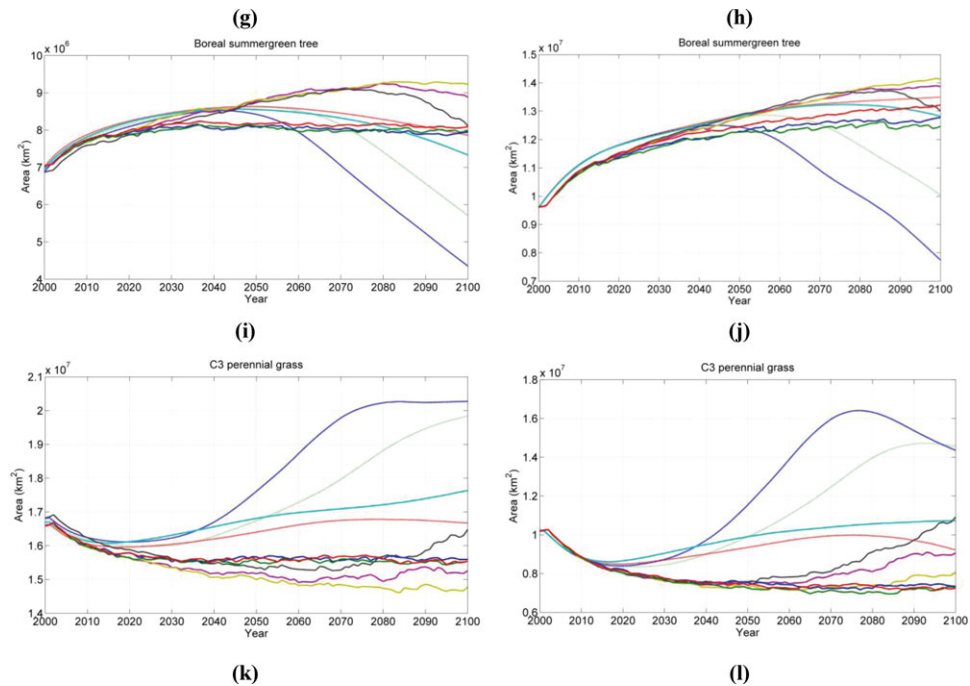


Figure 6. Continued.

under the stabilization emission scenario (Fig. 6g and 6h). The largest decrease happened under A1FI (approximately 90% decreases) and the lowest occurred under X902L (less than 10% decreases). Driven by four IPCC climates, ensemble simulations produced first an increasing followed by a decreasing trend in BSW coverage with the turning point located in the mid-century (Fig. 6i). A similar trend was found under the reference emission scenario from MIT IGSM; however, the decreasing amplitudes were much lower and the turning point occurred much later (approximately 2080). In contrast, under the stabilization emission scenario, there were almost no changes after the BSW area achieved its peak in 2030. Finally, only two climates (A1FI and B2) lead to a net decrease in BSW area in both types of simulations (Fig. 6i and 6j). For CPG plants, two climates (A1FI and A2) lead to a substantial coverage increase at the end of the 21st century, while the other climates contributed to a slight increase or a net decrease in CPG coverage (Fig. 6k and 6l). It should be noted that in the control simulation under A1FI, CPG coverage shrank significantly after reaching its peak in the year 2075 (Fig. 6l).

Spatial changes

Among different climates, the changing rates of vegetation distribution are quite different and more pronounced under strong warming scenarios (e.g., A1FI, Fig. 6). For the Arctic region, we projected a northward grass expansion associated

with warming temperatures. As the warming conditions are projected to continue into the 21st century, we predicted a continuous increase of greenness in this region. We found that different climates result in different extents of greenness in the region. For example, the most extreme warming climate, A1FI, is responsible for the intense tree line expansion, while the lowest warming climate, X905L, corresponds to the weakest tree line migration.

In North America and Eurasia, we projected a clear northward expansion of BSW plants into the low Arctic region (Fig. 7). However, it is worth noting that the increased temperature strongly influences the competitive advantage between BSW and CPG plants. For instance, under A1FI, BSW plants would replace a large area of CPG due to warming temperatures in the region during the first half of the 21st century. However, in the second half century, the continuous increasing temperature completely reverses the competitive advantage between BSW and CPG. Consequently the CPG plants could redominate large areas once covered by BSW plants. Meanwhile, increased temperature enhances evapotranspiration, thereby resulting in “drier” conditions that strengthen the competition of CPG, even if the region receives more precipitation.

A unanimous decline in BNE coverage is predicted in western Eurasia and North America, due to the replacement of CPG plants. However, the extent of the decline is largely controlled by warming temperatures. In particular, the intense warming scenario (e.g., A1FI) is always responsible for the

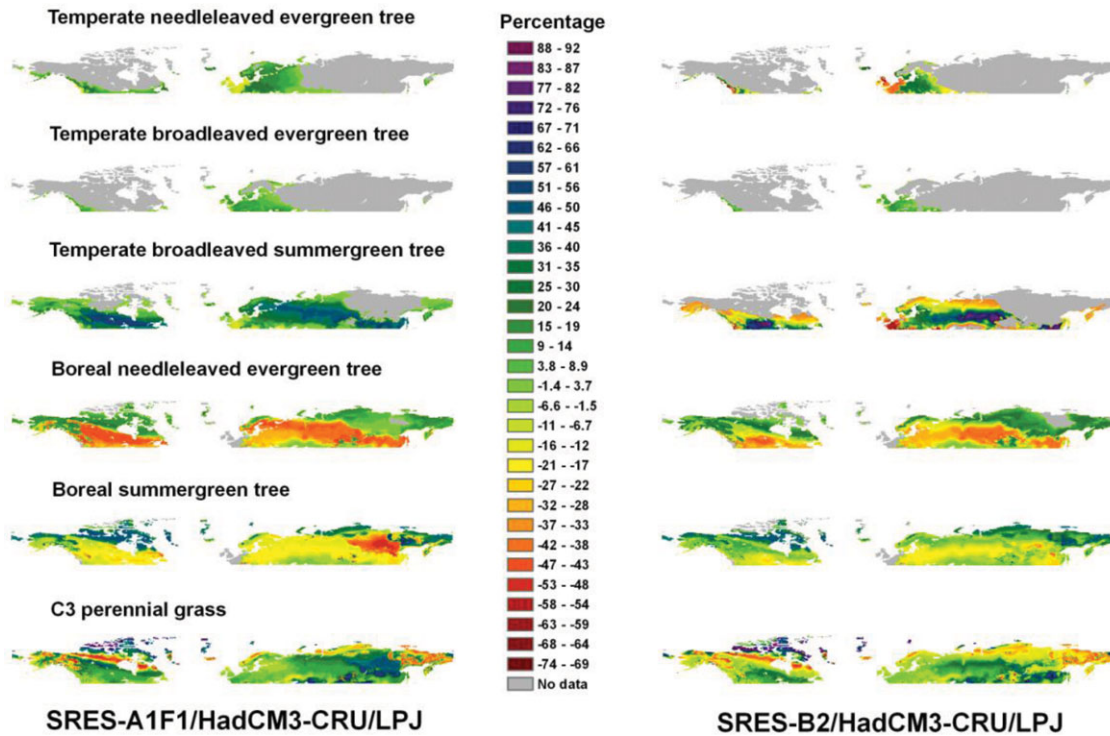


Figure 7. Changes in vegetation distribution of six PFTs between 2000 and 2100. Simulated changes in FPC were calculated under a strong (HadCM3-A1F1) and a moderate climate change scenario (HadCM3-B2).

most intense response (Fig. 7). In contrast, under X905L, BNE trees are always the dominant vegetation in boreal forest ecosystems, despite the small northward migration of TBS trees in Western Europe. During the first half of the 21st century, we projected a strong northward CPG expansion from the drying and less warming region (45°N–55°N) in Eurasia. However, the continuous warming temperatures could cause increased dryness, which would further favor the domination of TBS trees in the grass-migrated boreal forest regions in the second half of the 21st century. In North America and Eurasia, we projected a significant northward expansion of TBS trees. Our findings are consistent with Wolf et al. (2008), which predicted a more deciduous world in terms of land vegetation in the 21st century. The TNE plant was always, in our simulations, the dominant PFT in western Eurasia, and in the small area along western Canada. TBE plants appear in the same regions as TNE trees, and also have a temporal increasing trend, but do not spread into other regions.

Discussion

Uncertainty of vegetation distribution

In this study, the parameter-induced uncertainty contributes most to the total uncertainty in projecting vegetation distributions (Fig. 5). Since the uncertainty range is determined

by the consequences of parameter combinations with extreme parameter values, a further constrained parameter space could potentially reduce the uncertainty range. One widely used method to constrain the model uncertainty is “the inverse method,” which is able to introduce parameter correlations (Kaminski et al. 2002; Rayner et al. 2005). Furthermore, some parameters could be obtained through field experiments (e.g., CA_{max}).

Because each parameter either governs a biogeophysical or biogeochemical process, or represents an ecological constant, detailed information for a spatial analysis of parameter importance (Fig. 1) provides useful information for the assessment of regional environmental effects on vegetation coverage. However, we acknowledge that several important processes are not explicitly parameterized or described in the current model. For example, the fire return interval (Jiang et al. 2009; Jiang and Zhuang 2011) and successional pathways that the vegetation follows after a fire event are important, but these types of dynamics and their associated parameters are not fully modeled here. This is also true for permafrost dynamics and the nitrogen cycle. Under a warming climate, permafrost exerts significant effect on vegetation change through increased thawing of the active layer depth (Euskirchen et al. 2006; Tchekakova et al. 2009; Zhuang et al. 2003). Consequently, this would result in a

complex variety of vegetation responses. On the one hand, a northward tree line expansion would follow permafrost retreat. On the other hand, thermokarst development in the boreal forest region could remove the ice-rich substrate, which is the physical foundation of the forest, thereby destroying extensive spruce and birch forests and leading to a conversion to wet sedge meadows (Osterkamp *et al.* 2000). In addition, nitrogen dynamics considerably impact plant growth and productivity by limiting nitrogen availability for carbon sequestration (LeBauer and Treseder 2008). In this study, the effect of CO₂ fertilization on the northward greenness expansion could be somewhat overestimated because uncoupled nitrogen dynamics could realistically limit the rate of plant shift. In addition to parameters, the climate variability also contributes to the uncertainty of projected vegetation coverage (Fig. 5). All six PFTs seem to be sensitive to climate variability; however, different PFTs present distinct behaviors in response to climate variability. These differences are associated with the different bioclimatic limits (e.g., the lower and upper limit of temperature optimum for photosynthesis) used for each PFT in the model.

The regional characteristics of vegetation redistribution are indeed determined by the regional climate. However, other regional factors, such as permafrost dynamics (Wania *et al.* 2009a, b), human influence (Neilson *et al.* 2005; Araújo and Rahbek 2006; Araújo and New 2007), and topographic constraints (Rupp *et al.* 2001) could also be key determinants in the control of vegetation dynamics in the northern high latitudes. For example, human land use exerts considerable effects on landscape change, and through fire suppression, human activities strongly influence the wildfire regime, which is a major disturbance in boreal forest ecosystems (Kasischke *et al.* 2002; Rupp *et al.* 2002; Kasischke and Turetsky 2006; Flannigan *et al.* 2009). In addition, the topographic barrier is always an important limitation to tree line advance, especially in mountain areas.

The emission-induced uncertainty was examined by stratifying comparisons of FPC outputs using the climates of X901M, X902L, and X903H separately from results using the climates of X904M, X905L, and X906H. Our results imply that the CO₂ fertilization effect on plants is substantial, especially in the high-emission scenarios (e.g., reference emission from MIT IGSM), and thus may make a large contribution to vegetation change, in addition to the contribution it makes to direct temperature and water effects. This is consistent with other studies (e.g., Bachelet *et al.* 2003) that have shown that the rate of vegetation change would be affected by the extent of the CO₂ fertilization effect. In this study, between the reference and stabilization emission scenarios, the magnitudes of the uncertainty range are quite different (Fig. 6). In particular, under the reference emission scenario, uncertainties in FPC outputs are generally larger than those under the stabilized emission scenario. An analysis of emission-induced

uncertainty for future vegetation distribution provides useful information for policy makers and ecosystem managers to better understand the effects of CO₂ fertilization on vegetation dynamics and the potential northward shift of greenness in the northern high latitudes.

Future vegetation distribution and its consequences

Compared with control outputs, we projected a northern hemisphere with less TNE, BNE, and BSW trees, and more CPG plants based on the ensemble simulations (Fig. 5). This implies that the environmental changes (e.g., changes of biogeophysical or biogeochemical processes) are more likely to contribute to increases in TNE, BNE, and BSW coverage, and to a decrease in CPG coverage. For TBS trees, it suggests that the control simulation with its current parameterization can somewhat represent the “average” output from a large number of simulations with different combinations of parameter values.

In our simulations, climate input (e.g., air temperature) plays an important role in determining vegetation redistribution; this has also been demonstrated in other recent studies (Kharuk *et al.* 2009; Shuman and Shugart 2009; Giesecke *et al.* 2010; Lantz *et al.* 2010; Wright and Fridley 2010). For example, the continuous increased summer temperature in the Arctic region potentially achieves the lowest requirement for CPG to survive, therefore stimulating northward CPG expansion in the region. In the Siberia region, the warmer and wetter climate first stimulates the BSW expansion, and then the highly increased temperature potentially results in a much drier condition that exerts strong water stress for BSW trees and consequently leads to their recession. The projected BNE decline is associated with the increasing heat stress (leading to possible high peak tissue temperature) on BNE trees (Lucht *et al.* 2006) throughout all climate scenarios. Compared with previous studies (e.g., Chapin and Starfield 1997; Rupp *et al.* 2001; Neilson *et al.* 2005), which suggest that the northward treeline migration into the western Arctic region would likely take centuries to occur, our results show that this time scale could be much shorter. However, since many (species-specific) processes, habitat and landscape fragmentation, invasions, plasticities, and so on, are not included in the model, it may well be biased in terms of the speed of vegetation distributional and compositional changes.

Consistent with previous studies (e.g., Euskirchen *et al.* 2009), our results indicated a complexity of regional vegetation responses to future climate change in the northern high latitudes (Fig. 7). However, a unanimous northward treeline migration due to anomalous warming conditions was projected in the Arctic region across all climates, which is consistent with other studies (Lloyd and Fastie 2002; Bachelet *et al.* 2005; Scholze *et al.* 2006; McGuire *et al.* 2007; Wolf *et al.*

2008). The predicted expansion of greenness in the Arctic region (Fig. 7) could dramatically change the regional features, which were originally characterized by low air and soil temperatures, permafrost, a short growing season, and limited vegetation productivity (Stow *et al.* 2004). In particular, the projected northward tree line expansion could decrease the surface albedo (Thompson *et al.* 2004) and lead to a substantial positive feedback on atmospheric heating in summer (Chapin III *et al.* 2005; Euskirchen *et al.* 2009). Subsequent environmental responses, such as a decrease in snow cover duration and extent (Euskirchen *et al.* 2006, 2007; Stone *et al.* 2002), the exacerbation of permafrost degradation (Jorgenson *et al.* 2001), and the lengthening of the growing season (Smith *et al.* 2004) could further facilitate the surviving of trees and grasses.

Since the structure and composition of plant communities have a fundamental effect on both regional and global climate systems as they modify surface albedo, carbon fluxes, and the water cycle (Harding *et al.* 2002; Callaghan *et al.* 2004; ACIA 2005), the detailed analysis of parameter importance and regional vegetation changes presented in this study provides useful information for further analysis of ecological responses (e.g., water and carbon cycle) to potential climate changes and future ecosystem resource management schemes.

Conclusions

This study quantitatively investigated the parameter and climate-induced uncertainties in simulating vegetation distribution in the northern high latitudes using LPJ. Parameter-induced uncertainties contribute the largest amount of uncertainty in modeling vegetation distribution, while emission- and climate-induced uncertainties are also significant. The relative importance of different parameters varies temporally and spatially in the region, and is influenced by climate inputs. Parameters controlling plant C uptake and light-use efficiency have the predominant influence in determining the vegetation coverage of both woody and herbaceous plant function types. Although the uncertainty is significantly large, we projected a unanimous northward greenness in the Arctic region due to anomalous warming. Temporally, boreal needleleaved evergreen plants are projected to decline considerably, and a large portion of C3 perennial grass will disappear by the end of the century. In contrast, the area of temperate trees would increase considerably. This study provides useful information in the exploration of the influence of environmental changes on vegetation dynamics, and the different vegetation responses to different emission polices.

Acknowledgments

This research is supported by the National Aeronautics and Space Administration (NASA) Land Use and Land Cover Change program (NASA-NNX09AI26G), Department of En-

ergy (DE-FG02-08ER64599), National Science Foundation (NSF-1028291 and NSF-0919331), and the NSF Carbon and Water in the Earth Program (NSF-0630319). The computing is supported by Rosen Center of high-performance computing at Purdue.

References

- ACIA. 2005. Arctic climate impact assessment (ACIA), 2005. Cambridge Univ. Press, New York.
- Araujo, M., and C. Rahbek. 2006. How does climate change affect biodiversity? *Science*(Washington) 313:1396–1397.
- Araújo, M., and M. New. 2007. Ensemble forecasting of species distributions. *Trends Ecol. Evol.* 22:42–47.
- Bachelet, D., J. Lenihan, R. Neilson, R. Drapek, and T. Kittel. 2005. Simulating the response of natural ecosystems and their fire regimes to climatic variability in Alaska. *Can. J. Fores. Res.* 35:2244–2257.
- Bachelet, D., R. P. Neilson, T. Hickler, R. J. Drapek, J. M. Lenihan, M. T. Sykes, B. Smith, S. Sitch, and K. Thonicke. 2003. Simulating past and future dynamics of natural ecosystems in the United States. *Global Biogeochem. Cycles* 17:1045–1066.
- Beringer, J., F. Chapin III, C. Thompson, and A. McGuire. 2005. Surface energy exchanges along a tundra-forest transition and feedbacks to climate. *Agr. Forest Meteorol.* 131:143–161.
- Betts, R. A. 2000. Offset of the potential carbon sink from boreal forestation by decreases in surface albedo. *Nature* 408:187–190.
- Bonan, G. B., S. Levis, S. Sitch, M. Vertenstein, and K. W. Oleson. 2003. A dynamic global vegetation model for use with climate models: concepts and description of simulated vegetation dynamics. *Glob. Change Biol.* 9:1543–1566.
- Bounoua, L., F. Hall, P. Sellers, A. Kumar, G. Collatz, C. Tucker, and M. Imhoff. 2010. Quantifying the negative feedback of vegetation to greenhouse warming: a modeling approach. *Geophys. Res. Lett.* 37:L23701.
- Callaghan, T., L. Björn, Y. Chernov, T. Chapin, T. Christensen, B. Huntley, R. Ims, M. Johansson, D. Jolly, and S. Jonasson. 2004. Effects of changes in climate on landscape and regional processes, and feedbacks to the climate system. *AMBIO: J. Hum. Environ.* 33:459–468.
- Chapin, F., and A. Starfield. 1997. Time lags and novel ecosystems in response to transient climatic change in arctic Alaska. *Clim. Change* 35:449–461.
- Chapin, III, F., A. McGuire, J. Randerson, R. Pielke, D. Baldocchi, S. Hobbie, N. Roulet, W. Eugster, E. Kasischke, and E. Rastetter. 2000. Arctic and boreal ecosystems of western North America as components of the climate system. *Glob. Change Biol.* 6:211–223.
- Chapin, III, F., M. Sturm, M. Serreze, J. McFadden, J. Key, A. Lloyd, A. McGuire, T. Rupp, A. Lynch, and J. Schimel. 2005. Role of land-surface changes in Arctic summer warming. *Science* 310:657–660.
- Chapman, W., and J. Walsh. 2007. Simulations of Arctic temperature and pressure by global coupled models. *J. Clim.* 20:609–632.

- Clarke, L., J. Edmonds, H. Jacoby, H. Pitcher, J. Reilly, and R. Richels. 2007. Scenarios of Greenhouse Gas Emissions and Atmospheric Concentrations, Sub-report 2.1A of Synthesis and Assessment Product 2.1 by the U.S. Climate Change Science Program and the Subcommittee on Global Change Research, Department of Energy, Office of Biological and Environmental Research, Washington, DC., USA, 106 pp.
- Collatz, G., J. Berry, G. Farquhar, and J. Pierce. 1990. The relationship between the Rubisco reaction mechanism and models of photosynthesis*. *Plant Cell Environ.* 13:219–225.
- Cox, P., R. Betts, M. Collins, P. Harris, C. Huntingford, and C. Jones. 2004. Amazonian forest dieback under climate-carbon cycle projections for the 21st century. *Theor. Appl. Climatol.* 78:137–156.
- Cramer, W., A. Bondeau, F. Woodward, I. Prentice, R. Betts, V. Brovkin, P. Cox, V. Fisher, J. Foley, and A. Friend. 2001. Global response of terrestrial ecosystem structure and function to CO₂ and climate change: results from six dynamic global vegetation models. *Glob. Change Biol.* 7:357–373.
- D'Odorico, P., F. Laio, and L. Ridolfi. 2006. Patterns as indicators of productivity enhancement by facilitation and competition in dryland vegetation. *J. Geophys. Res.* 111:G03010.
- Enquist, B., and K. Niklas. 2002. Global allocation rules for patterns of biomass partitioning in seed plants. *Science* 295:1517–1520.
- Euskirchen, E., A. McGuire, and F. Chapin III. 2007. Energy feedbacks of northern high latitude ecosystems to the climate system due to reduced snow cover during 20th century warming. *Glob. Change Biol.* 13:2425–2438.
- Euskirchen, E., A. McGuire, D. Kicklighter, Q. Zhuang, J. Clein, R. Dargaville, D. Dye, J. Kimball, K. McDonald, and J. Melillo. 2006. Importance of recent shifts in soil thermal dynamics on growing season length, productivity, and carbon sequestration in terrestrial high-latitude ecosystems. *Glob. Change Biol.* 12:731–750.
- Euskirchen, E., A. McGuire, F. Chapin III, S. Yi, and C. Thompson. 2009. Changes in vegetation in northern Alaska under scenarios of climate change, 2003–2100: implications for climate feedbacks. *Ecological Applications* 19:1022–1043.
- FAO. 1991. The digitized soil map of the world (Release 1.0). Food and Agriculture Organization of the United Nations. 67(1), Rome.
- Farquhar, G., S. Caemmerer, and J. Berry. 1980. A biochemical model of photosynthetic CO₂ assimilation in leaves of C₃ species. *Planta* 149:78–90.
- Flannigan, M., B. Stocks, M. Turetsky, and M. Wotton. 2009. Impacts of climate change on fire activity and fire management in the circumboreal forest. *Glob. Change Biol.* 15:549–560.
- Forest, C. E., P. H. Stone, and A. P. Sokolov. 2008. Constraining Climate Model Parameters from Observed 20th Century Changes. *Tellus*, 60A:911–920.
- Gerber, S., F. Joos, and I. Prentice. 2004. Sensitivity of a dynamic global vegetation model to climate and atmospheric CO₂. *Glob. Change Biol.* 10:1223–1239.
- Gerten, D., S. Schaphoff, U. Haberlandt, W. Lucht, and S. Sitch. 2004. Terrestrial vegetation and water balance—hydrological evaluation of a dynamic global vegetation model. *J. Hydrol.* 286:249–270.
- Giesecke, T., P. Miller, M. Sykes, A. Ojala, H. Seppä, and R. Bradshaw. 2010. The effect of past changes in inter-annual temperature variability on tree distribution limits. *J. Biogeogr.* 37:1394–1405.
- Hallgren, W., and A. Pitman. 2000. The uncertainty in simulations by a Global Biome Model (BIOME3) to alternative parameter values. *Glob. Change Biol.* 6:483–495.
- Harding, R., P. Kuhry, T. Christensen, M. Sykes, R. Dankers, and S. van der Linden. 2002. Climate feedbacks at the tundra-taiga interface. *Ambio* 12:47–55.
- Haxeltine, A., and I. Prentice. 1996. A general model for the light-use efficiency of primary production. *Funct. Ecol.* 10:551–561.
- Helton, J., and F. Davis. 2000. Sampling-based methods. Sensitivity Analysis, eds A. Saltelli, K. Chan and E. M. Scott, ch. 6, Pp. 101–153 *in* New York, Wiley.
- Huang, S., S. Titus, and D. Wiens. 1992. Comparison of nonlinear height-diameter functions for major Alberta tree species. *Can. J. For. Res.* 22:1297–1304.
- Iman, R., and J. Helton. 1988. An investigation of uncertainty and sensitivity analysis techniques for computer models. *Risk Anal.* 8:71–90.
- Jiang, Y., Q. Zhuang, M. D. Flannigan, and J. M. Little. 2009. Characterization of wildfire regimes in Canadian boreal terrestrial ecosystems. *Int. J. Wildland Fire*, 18(8): 992–1002. doi:10.1071/WF08096.
- Jiang, Y., and Q. Zhuang. 2011. Extreme value analysis of wildfires in Canadian boreal forest ecosystems. *Can. J. For. Res.* 41:1836–1851.
- Johns, T. C., R. E. Carnell, J. F. Crossley, J. M. Gregory, J. F. B. Mitchell, C. A. Senior, S. F. B. Tett, and R. A. Wood. 1997. The second Hadley Centre coupled ocean-atmosphere GCM: Model description, spinup and validation. *Clim. Dyn.* 13:103–134.
- Jorgenson, M., C. Racine, J. Walters, and T. Osterkamp. 2001. Permafrost degradation and ecological changes associated with a warming climate in Central Alaska. *Clim. Change* 48:551–579.
- Kaminski, T., W. Knorr, P. Rayner, and M. Heimann. 2002. Assimilating atmospheric data into a terrestrial biosphere model: A case study of the seasonal cycle. *Global Biogeochem. Cycles* 16:1066–1082.
- Kasischke, E. S., and M. R. Turetsky. 2006. Recent changes in the fire regime across the North American boreal region—spatial and temporal patterns of burning across Canada and Alaska. *Geophys. Res. Lett.* 33:L09703, doi:10.1029/2006GL025677.
- Kasischke, E. S., D. Williams, and D. Barry. 2002. Analysis of the patterns of large fires in the boreal forest region of Alaska. *Int. J. Wildland Fire* 11:131–144.

- Keeling, C., and T. Whorf. 2005. Atmospheric CO₂ records from sites in the SIO air sampling network. Trends: A Compendium of Data on Global Change. Carbon Dioxide Information Analysis Center, Oak Ridge National Laboratory, US Department of Energy, Oak Ridge, TN, USA.
- Kharuk, V., K. Ranson, S. Im, and M. Dvinskaya. 2009. Response of *Pinus sibirica* and *Larix sibirica* to climate change in southern Siberian alpine forest—tundra ecotone. *Scand. J. Fores. Res.* 24:130–139.
- Kim, Y., and G. Wang. 2005. Modeling seasonal vegetation variation and its validation against Moderate Resolution Imaging Spectroradiometer (MODIS) observations over North America. *J. Geophys. Res.* 110:D04106, doi:10.1029/2004JD005436.
- Knorr, W., I. Prentice, J. House, and E. Holland. 2005. Long-term sensitivity of soil carbon turnover to warming. *Nature* 433:298–301.
- Lantz, T., S. Gergel, and S. Kokelj. 2010. Spatial heterogeneity in the shrub tundra ecotone in the Mackenzie Delta Region, Northwest Territories: implications for Arctic environmental change. *Ecosystems* 13:194–204.
- Larcher, W. 2003. *Physiological plant ecology: ecophysiology and stress physiology of functional groups*. Springer Verlag, New York.
- LeBauer, D. S., and K. K. Treseder. 2008. Nitrogen limitation of net primary productivity in terrestrial ecosystems is globally distributed. *Ecology* 89:371–379.
- Leverenz, J. 1988. The effects of illumination sequence, CO₂ concentration, temperature and acclimation on the convexity of the photosynthetic light response curve. *Physiologia plantarum* 74:332–341.
- Lloyd, A., and C. Fastie. 2002. Spatial and temporal variability in the growth and climate response of treeline trees in Alaska. *Clim. Change* 52:481–509.
- Lucht, W., S. Schaphoff, T. Erbrecht, U. Heyder, and W. Cramer. 2006. Terrestrial vegetation redistribution and carbon balance under climate change. *Carbon Balance Manag.* 1:1–7.
- Marino, S., I. Hogue, C. Ray, and D. Kirschner. 2008. A methodology for performing global uncertainty and sensitivity analysis in systems biology. *J. Theor. Biol.* 254:178–196.
- McGuire, A., F. Chapin, C. Wirth, M. Apps, J. Bhatti, T. Callaghan, T. Christensen, J. Clein, M. Fukuda, and T. Maximov. 2007. Responses of high latitude ecosystems to global change: potential consequences for the climate system. Pp. 297–310 in (Canadell, JG, Pataki, DE, Pitelka, LF), eds. *Terrestrial Ecosystems in a Changing World*. The IGBP Series, Springer-Verlag, Berlin.
- Mitchell, J., T. Johns, J. Gregory, and S. Tett. 1995. Climate responses to increasing levels of greenhouse gases and sulphate aerosols. *Nature* 376:501–504.
- Mitchell, T., and P. Jones. 2005. An improved method of constructing a database of monthly climate observations and associated high-resolution grids. *Int. J. Climatol.* 25:693–712.
- Monsi, M., and T. Saeki. 1953. The light factor in plant communities and its significance for dry matter production. *Japan. J. Bot.* 14:22–52.
- Nakicenovic, N., J. Alcamo, G. Davis, B. de Vries, J. Fenhann, and co-authors. 2000. *IPCC Special Report on Emissions Scenarios*. Cambridge University Press, Cambridge, United Kingdom and New York, NY, USA. 599 pp.
- Neilson, R., L. Pitelka, A. Solomon, R. Nathan, G. Midgley, J. Fragoso, H. Lischke, and K. Thompson. 2005. Forecasting regional to global plant migration in response to climate change. *Bioscience* 55:749–759.
- Neilson, R. P., and R. J. Drapek. 1998. Potentially complex biosphere responses to transient global warming. *Glob. Change Biol.* 4:505–521, doi:10.1046/j.1365-2486.1998.t01-1-00202.x.
- New, M., D. Lister, M. Hulme, and I. Makin. 2002. A high-resolution data set of surface climate over global land areas. *Clim. Res.* 21:1–25.
- Osterkamp, T. E., L. Viereck, Y. Shur, M. T. Jorgenson, C. Racine, A. Doyle, and R. D. Boone. 2000. Observations of Thermokarst and Its Impact on Boreal Forests in Alaska, U.S.A. *Arctic, Antarctic, and Alpine Res.* 32:303–315.
- Overland, J., M. Spillane, and N. Soreide. 2004. Integrated analysis of physical and biological pan-Arctic change. *Clim. Change* 63:291–322.
- Paltsev, S., J. M. Reilly, H. D. Jacoby, R. S. Eckaus, J. McFarland, M. Sarofim, M. Asadoorian, and M. Babiker. 2005. *The MIT Emissions Prediction and Policy Analysis (EPPA) Model: Version 4*, MIT Joint Program for the Science and Policy of Global Change, Report 125, 72 pp.
- Prentice, I., W. Cramer, S. Harrison, R. Leemans, R. Monserud, and A. Solomon. 1992. Special paper: a global biome model based on plant physiology and dominance, soil properties and climate. *J. Biogeogr.* 19:117–134.
- Prentice, I. C., G. D. Farquhar, M. G. R. Fasham, M. L. Goulden, M. Heimann, V. J. Jaramillo, H. S. Kheshgi, C. Le Quéré, R. J. Scholes, and D. W. R. Wallace. 2001. The carbon cycle and Atmospheric carbon dioxide. Pp. 183–237, in Houghton, J. T., Ding, Y., Griggs, D. J., Noguer, M., van der Linden, P. J., Dai, X., Maskell, K., and Johnson, C. A. eds. *Climate Change 2001, The Scientific Basis: Contribution of Working Group I to the Third Assessment Report of the Intergovernmental Panel on Climate Change (IPCC)*, Cambridge University Press, Cambridge, UK, 944 pp.
- Pujol, G. 2008. *Sensitivity: sensitivity analysis*. R package version 1.4-0.
- Rayner, P., M. Scholze, W. Knorr, T. Kaminski, R. Giering, and H. Widmann. 2005. Two decades of terrestrial carbon fluxes from a carbon cycle data assimilation system (CCDAS). *Global Biogeochem. Cycles* 19:GB2026, doi:10.1029/2004GB002254.
- RDC-Team. 2010. *R: a language and environment for statistical computing* 2009. R Foundation for Statistical Computing, Vienna. Available at <http://www.R-project.org>.
- Rupp, T., F. Chapin, and A. Starfield. 2001. Modeling the influence of topographic barriers on treeline advance at the

- forest-tundra ecotone in northwestern Alaska. *Clim. Change* 48:399–416.
- Rupp, T. S., A. M. Starfield, F. S. Chapin III, and P. Duffy. 2002. Modeling the impact of black spruce on the fire regime of Alaskan boreal forest. *Clim. Change* 55:213–233.
- Saco, P., G. Willgoose, and G. Hancock. 2007. Eco-geomorphology of banded vegetation patterns in arid and semi-arid regions. *Hydrol. Earth Syst. Sci.* 11:1717–1730.
- Saltelli, A. 2002. Making best use of model evaluations to compute sensitivity indices. *Comput. Phys. Commun.* 145:280–297.
- Schaphoff, S., W. Lucht, D. Gerten, S. Sitch, W. Cramer, and I. Prentice. 2006. Terrestrial biosphere carbon storage under alternative climate projections. *Clim. Change* 74:97–122.
- Scholze, M., W. Knorr, N. Arnell, and I. Prentice. 2006. A climate-change risk analysis for world ecosystems. *Proc. Natl. Acad. Sci. USA.* 103:13116–13120.
- Shuman, J., and H. Shugart. 2009. Evaluating the sensitivity of Eurasian forest biomass to climate change using a dynamic vegetation model. *Environ. Res. Lett.* 4:045024.
- Sitch, S., B. Smith, I. Prentice, A. Arneth, A. Bondeau, W. Cramer, J. Kaplan, S. Levis, W. Lucht, and M. Sykes. 2003. Evaluation of ecosystem dynamics, plant geography and terrestrial carbon cycling in the LPJ dynamic global vegetation model. *Glob. Change Biol.* 9:161–185.
- Sitch, S., V. Brovkin, and W. von Bloh. 2005. Impacts of future land cover changes on atmospheric CO₂ and climate. *Global Biogeochem. Cycles* 19:GB2013, doi:10.1029/2004GB002311.
- Smith, B., I. Prentice, and M. Sykes. 2001. Representation of vegetation dynamics in the modelling of terrestrial ecosystems: comparing two contrasting approaches within European climate space. *Glob. Ecol. Biogeogr.* 10:621–637.
- Smith, N., S. Saatchi, and J. Randerson. 2004. Trends in high northern latitude soil freeze and thaw cycles from 1988 to 2002. *J. Geophys. Res.* 109:D12101.
- Soja, A., N. Tchebakova, N. French, M. Flannigan, H. Shugart, B. Stocks, A. Sukhinin, E. Parfenova, F. Chapin III, and P. Stackhouse. 2007. Climate-induced boreal forest change: predictions versus current observations. *Global Planet. Change* 56:274–296.
- Sokolov, A. P., C. A. Schlosser, S. Dutkiewicz, S. Paltsev, D. W. Kicklighter, H. D. Jacoby, R. G. Prinn, C. E. Forest, J. Reilly, C. Wang, B. Felzer, M. C. Sarofim, J. Scott, P. H. Stone, J. M. Melillo, and J. Cohen. 2005. The MIT Integrated Global System Model (IGSM) Version 2: Model Description and Baseline Evaluation. MIT Joint Program on the Science and Policy of Global Change, Report 124, Cambridge, Massachusetts.
- Sokolov, A. P., P. H. Stone, C. E. Forest, R. Prinn, M. C. Sarofim, M. Webster, S. Paltsev, C. A. Schlosser, D. Kicklighter, S. Dutkiewicz, J. Reilly, C. Wang, B. Felzer, and J. H. Dacoby. 2009. Probabilistic forecast for 21st century climate based on uncertainties in emissions (without policy) and climate parameters. *J. Clim.* 22:5175–5204.
- Specht, R. 1981. Growth indices—their role in understanding the growth, structure and distribution of Australian vegetation. *Oecologia* 50:347–356.
- Sprugel, D., M. Ryan, J. Brooks, K. Vogt, and T. Martin. 1995. Respiration from the organ level to the stand. Pp. 255–299 in W. K. Smith and T. M. Hinkly, eds. *Resource physiology of conifers*. Academic, San Diego.
- Stone, R., E. Dutton, J. Harris, and D. Longenecker. 2002. Earlier spring snowmelt in northern Alaska as an indicator of climate change. *J. Geophys. Res.* 107(D10):4089, doi:10.1029/2000JD000286.
- Stow, D., A. Hope, D. McGuire, D. Verbyla, J. Gamon, F. Huemmrich, S. Houston, C. Racine, M. Sturm, and K. Tape. 2004. Remote sensing of vegetation and land-cover change in Arctic Tundra Ecosystems. *Remote Sens. Environ.* 89:281–308.
- Tang, J., and Q. Zhuang. 2009. A global sensitivity analysis and Bayesian inference framework for improving the parameter estimation and prediction of a process-based Terrestrial Ecosystem Model. *J. Geophys. Res.* 114:D15303, doi:10.1029/2009JD011724.
- Tape, K., M. Sturm, and C. Racine. 2006. The evidence for shrub expansion in Northern Alaska and the Pan-Arctic. *Glob. Change Biol.* 12:686–702.
- Tchebakova, N., E. Parfenova, and A. Soja. 2009. The effects of climate, permafrost and fire on vegetation change in Siberia in a changing climate. *Environ. Res. Lett.* 4:045013.
- Thompson, C., J. Beringer, F. Chapin III, and A. McGuire. 2004. Structural complexity and land surface energy exchange along a gradient from arctic tundra to boreal forest. *J. Veg. Sci.* 15:397–406.
- Thompson, S., C. Harman, P. Heine, and G. Katul. 2010. Vegetation-infiltration relationships across climatic and soil type gradients. *J. Geophys. Res.* 115:G02023.
- Van Griensven, A., T. Meixner, S. Grunwald, T. Bishop, M. Diluzio, and R. Srinivasan. 2006. A global sensitivity analysis tool for the parameters of multi-variable catchment models. *J. Hydrol.* 324:10–23.
- Walker, M., C. Wahren, R. Hollister, G. Henry, L. Ahlquist, J. Alatalo, M. Bret-Harte, M. Calef, T. Callaghan, and A. Carroll. 2006. Plant community responses to experimental warming across the tundra biome. *Proc. Natl. Acad. Sci. USA.* 103:1342–1346.
- Wania, R., I. Ross, and I. Prentice. 2009a. Integrating peatlands and permafrost into a dynamic global vegetation model: 1. Evaluation and sensitivity of physical land surface processes. *Global Biogeochem. Cycles* 23:GB3014, doi:10.1029/2008GB003412.
- Wania, R., I. Ross, and I. Prentice. 2009b. Integrating peatlands and permafrost into a dynamic global vegetation model: 2. Evaluation and sensitivity of vegetation and carbon cycle processes. *Global Biogeochem. Cycles* 23:GB3015, doi:10.1029/2008GB003413.

- Waring, R., P. Schroeder, and R. Oren. 1982. Application of the pipe model theory to predict canopy leaf area. *J. For. Res.* 12:556–560.
- Webster, M., A. P. Sokolov, J. M. Reilly, C. E. Forest, S. Paltsev, A. Schlosser, C. Wang, D. Kicklighter, M. Sarofim, J. Melillo, R. G. Prinn, and H. D. Jacoby. 2009. Analysis of Climate Policy Targets under Uncertainty, MIT-JPSPGC Report 180, September, 53 pp.
- Weng, E., and G. Zhou. 2006. Modeling distribution changes of vegetation in China under future climate change. *Environ. Model. Assess.* 11:45–58.
- Whitehead, D., F. Kelliher, P. Lane, and D. Pollock. 1994. Seasonal partitioning of evaporation between trees and understorey in a widely spaced *Pinus radiata* stand. *J. Appl. Ecol.* 31:528–542.
- Wilmking, M., G. Juday, V. Barber, and H. Zald. 2004. Recent climate warming forces contrasting growth responses of white spruce at treeline in Alaska through temperature thresholds. *Glob. Change Biol.* 10:1724–1736.
- Wolf, A., T. Callaghan, and K. Larson. 2008. Future changes in vegetation and ecosystem function of the Barents Region. *Clim. Change* 87:51–73.
- Woodward, F. 1987. Climate and plant distribution. Cambridge Univ. Press, Cambridge, UK.
- Wright, J., and J. Fridley. 2010. Biogeographic synthesis of secondary succession rates in eastern North America. *J. Biogeogr.* 37:1584–1596.
- Zaehle, S., S. Sitch, B. Smith, and F. Hatterman. 2005. Effects of parameter uncertainties on the modeling of terrestrial biosphere dynamics. *Global Biogeochem. Cycles* 19:GB3020, doi:10.1029/2004GB002395.
- Zhuang, Q., A. D. McGuire, J. M. Melillo, J. S. Clein, R. J. Dargaville, D. W. Kicklighter, R. B. Myneni, J. Dong, V. E. Romanovsky, J. Harden, and J. E. Hobbie. 2003. Carbon cycling in extratropical terrestrial ecosystems of the Northern Hemisphere during the 20th Century: A modeling analysis of the influences of soil thermal dynamics. *Tellus* 55B:751–776.
- Zobler, L. 1986. A world soil file for global climate modeling. National Aeronautics and Space Administration, Goddard Space Flight Center, Institute for Space Studies, NASA Technical Memorandum 87802, 32 pp.