

MIT Open Access Articles

Magneto-fluorescent core-shell supernanoparticles

The MIT Faculty has made this article openly available. **Please share** how this access benefits you. Your story matters.

Citation: Chen, Ou, Lars Riedemann, Fred Etoc, Hendrik Herrmann, Mathieu Coppey, Mariya Barch, Christian T. Farrar, et al. "Magneto-Fluorescent Core-Shell Supernanoparticles." Nat Comms 5 (October 9, 2014): 5093.

As Published: <http://dx.doi.org/10.1038/ncomms6093>

Publisher: Nature Publishing Group

Persistent URL: <http://hdl.handle.net/1721.1/99461>

Version: Author's final manuscript: final author's manuscript post peer review, without publisher's formatting or copy editing

Terms of use: Creative Commons Attribution-Noncommercial-Share Alike





Published in final edited form as:

Nat Commun. ; 5: 5093. doi:10.1038/ncomms6093.

Magneto-Fluorescent Core-Shell Supernanoparticles

Ou Chen¹, Lars Riedemann², Fred Etoc³, Hendrik Herrmann^{4,5}, Mathieu Coppey³, Mariya Barch⁶, Christian T. Farrar⁷, Jing Zhao¹, Oliver T. Bruns¹, He Wei¹, Peng Guo⁸, Jian Cui¹, Russ Jensen¹, Yue Chen¹, Daniel K. Harris¹, Jose M. Cordero¹, Zhongwu Wang⁹, Alan Jasanoff^{6,10,11}, Dai Fukumura², Rudolph Reimer⁴, Maxime Dahan³, Rakesh K. Jain², and Mounji G. Bawendi^{1,*}

¹Department of Chemistry, Massachusetts Institute of Technology, 77 Massachusetts Ave., Cambridge, MA 02139 (USA)

²Massachusetts General Hospital and Harvard Medical School, 100 Blossom St., Boston, MA 02114 (USA)

³Laboratoire Physico-Chimie Curie, Institut Curie, CNRS UMR168, 75248 Paris (France)

⁴Heinrich-Pette-Institute, Martinistrasse 52, 20251 Hamburg (Germany)

⁵Bernhard-Nocht-Institute for Tropical Medicine, Bernhard-Nocht-Strasse 74, 20359 Hamburg (Germany)

⁶Department of Biological Engineering, Massachusetts Institute of Technology, 77 Massachusetts Ave., Cambridge, MA 02139 (USA)

⁷Athinoula A. Martinos Center for Biomedical Imaging, Massachusetts General Hospital, Charlestown, MA 02129 (USA)

⁸Vascular Biology Program, Children's Hospital Boston, Harvard Medical School, 300 Longwood Ave., Boston, MA 02115 (USA)

⁹Cornell High Energy Synchrotron Source (CHESS), Wilson Laboratory, Cornell University, Ithaca, NY, 14853 (USA)

¹⁰Department of Brain and Cognitive Sciences, Massachusetts Institute of Technology, 77 Massachusetts Ave., Cambridge, MA 02139 (USA)

¹¹Department of Nuclear Science and Engineering, Massachusetts Institute of Technology, 77 Massachusetts Ave., Cambridge, MA 02139 (USA)

Abstract

*Correspondence to: mgb@mit.edu.

Author contributions

O.C. and M.G.B. conceived and designed the project. O.C. performed the bulk of the experimental work with help from L.R., F.E., H.H., M.B., C.F., J.C., P.G. and R.J.. The data was analyzed by O.C., L.R., F.E., H.H., M.C., M.B., C.F., J.Z., O.B., J.C., H.W., P.G., R.J., Z.W. and M.G.B.. All authors discussed the results and took part in producing the manuscript.

Competing financial interests

The authors declare no competing financial interests.

Supplementary information accompanies this paper.

Magneto-fluorescent particles have been recognized as an emerging class of materials that exhibit great potential in advanced applications. However, synthesizing such magneto-fluorescent nanomaterials that simultaneously exhibit uniform and tunable sizes, high magnetic content loading, maximized fluorophore coverage at the surface, and a versatile surface functionality has proven challenging. Here we report a simple approach for co-assembling magnetic nanoparticles with fluorescent quantum dots to form colloidal magneto-fluorescent supernanoparticles. Importantly, these supernanoparticles exhibit a superstructure consisting of a close packed magnetic nanoparticle “core” which is fully surrounded by a “shell” of fluorescent quantum dots. A thin layer of silica-coating provides high colloidal stability and biocompatibility and a versatile surface functionality. We demonstrate that after surface pegylation, these silica-coated magneto-fluorescent supernanoparticles can be magnetically manipulated inside living cells while being optically tracked. Moreover, our silica-coated magneto-fluorescent supernanoparticles can also serve as an *in vivo* multi-photon and magnetic resonance dual-modal imaging probe.

Introduction

The design and fabrication of materials that simultaneously contain more than one functional component, so-called multifunctional materials, is an active research area with the potential to impact a wide range of technological applications^{1–4}. Among a variety of possible building blocks, colloidal nanocrystals have proven to be ideal for generating higher-order architectures either in random or ordered assemblies^{5–12}. In particular, co-assembling two types of nanocrystals with distinct properties into larger colloidal particles, especially at the mesoscopic scale, offers the possibility of producing new classes of nanoparticles (i.e., supernanoparticles (SPs)) with a set of combined properties, all the while maintaining the colloidal nature of their building blocks¹³. Moreover, synthesizing SPs with well defined internal structures, although challenging, may be critical in generating novel properties. In particular, magneto-fluorescent particles have been recognized as an emerging class of materials that have potential in advanced applications^{3, 14–17}. To fully realize their potential and to optimize their performance, the following design criteria need to be simultaneously fulfilled: uniform and tunable sizes, high magnetic content loading for synergistic magnetic properties, maximized loading of fluorophores at the surface for an optimized fluorescence signal, long-term colloidal stability, and a versatile surface functionality for the varied requirements of different applications, especially in biology. A simple and versatile synthetic strategy gives the additional benefit of a relatively rapid materials fabrication. In the past decade, much effort has been devoted to developing synthetic strategies for the fabrication of such magneto-fluorescent materials, including heterostructure crystal growth^{18–21}, co-encapsulation into organic structures (e.g., oil droplet, lipid micelle, block co-polymer) or inorganic materials (e.g., silica)^{22–29}, template-based synthesis via either chemical bonding or physical attachment^{30–32}.

Our method is based on co-assembling CdSe-CdS core-shell quantum dots (QDs) with Fe₃O₄ magnetic nanoparticles (MNPs) into colloidal SPs. In this co-assembly process, close packed MNPs form a “core” that is subsequently coated with a “shell” of QDs, resulting in the formation of “core-shell” structured SPs (CS-SPs). Additional thermal treatment transforms the randomly assembled “core” MNPs into a periodic assembly with a face-

centered-cubic (fcc) superlattice. The CS-SPs can be over coated with a thin silica layer, offering them further surface functionality and colloidal stability. Importantly, these silica-coated CS-SPs (silica-CS-SPs) exhibit uniform and tunable sizes, high magnetic content loading, maximized fluorophore loading on the surface, substantial colloidal stability, and versatile surface functionality. We demonstrate that after functionalizing with polyethylene glycol (PEG), silica-CS-SPs can be magnetically manipulated inside living cells while being optically tracked. Moreover, our silica-CS-SPs can also serve as a dual-modal imaging probe for *in vivo* multi-photon (MP) and magnetic resonance (MR) imaging.

Results and discussion

CdSe-CdS core-shell QDs (9.0 ± 0.4 nm) and superparamagnetic Fe_3O_4 MNPs (5.9 ± 0.3 nm) were used to demonstrate the formation of multifunctional magneto-fluorescent SPs (Supplementary Fig. 1). As shown schematically in Fig. 1a, hydrophobic QDs and MNPs were mixed and transferred to an aqueous solution using dodecyltrimethylammonium bromide (DTAB) as a surfactant. The resultant micelle aqueous solution was quickly injected into a poly(vinylpyrrolidone) (PVP) ethylene glycol (EG) solution. After 30 min stirring, the PVP stabilized SPs were isolated by centrifugation and re-dispersed into ethanol. Large-area transmission electron microscopy (TEM) and scanning electron microscopy (SEM) images show that the resulting spherical SPs have an average diameter of ~ 120 nm ($\sigma \sim 11\%$) (Fig. 1b, Supplementary Fig. 2). Dynamic light scattering (DLS) measurements give a hydrodynamic (HD) diameter of ~ 170 nm for ethanol-dispersed SPs (Supplementary Fig. 3). The apparent increased HD diameter relative to that in TEM and SEM is due to the presence of a PVP polymer surface layer and its low contrast in TEM and SEM imaging. Higher magnification TEM images demonstrate that each SP is composed of close packed nanoparticles (Fig. 1c). Due to the uniformity of the QD and MNP building blocks ($\sigma \sim 4.4\%$ for QDs and $\sigma \sim 5.0\%$ for MNPs) and their different sizes (9.0 nm for QDs and 5.9 nm for MNPs) (Supplementary Fig. 1), the QDs and MNPs can be easily distinguished in TEM. TEM images in Fig. 1c and 1d illustrate that each SP contains both QDs and MNPs. This result is consistent with a series of additional observations including absorption and PL spectra (Fig. 1e), wide angle X-ray diffraction (Fig. 1f), particle movement under external magnetic attraction (Fig. 1g), and energy dispersive X-ray spectroscopy (EDS) (Fig. 1h). EDS gives an elemental composition of 27.3% cadmium and 72.7% iron, in agreement with the initially introduced quantities of QDs and MNPs (Fig. 1h, inset). A phase separation occurs inside each SP, in which MNPs preferentially assemble to form a magnetic “core”, with the QDs forming a fluorescent “shell” (Fig. 1c and d). Scanning TEM (STEM) elemental mapping and line scan (Fig. 1i and j), and high-resolution TEM characterization (Supplementary Fig. 4) further demonstrate this “core-shell” superstructure. Three-dimensional (3D) TEM tomography is also consistent with only MNPs inside the SP core (Supplementary Movie 1). With these observations, we speculate that the formation of this super “core-shell” structure is most likely driven by enhanced forces which originate from the magnetic dipole-dipole interactions of MNPs (i.e., Fe_3O_4 MNPs) in addition to the solvophobic interactions that drive the assembly of both MNPs and QDs (Fig. 1a). The same protocol, but with small QDs (6.0 ± 0.3 nm) and large MNPs (9.6 ± 0.4 nm), yields the same CS-SP architecture (small QDs as “shell” and large MNPs as “core”)

(Supplementary Fig. 5 and Supplementary Movie 2). This control experiment excludes particle size as the dominant parameter for the formation of the “core-shell” superstructure.

Recent studies have shown that supercrystalline SPs can be obtained through a thermal annealing process^{33–35}. We performed a thermal annealing of our CS-SPs. TEM images show that upon annealing at 80 °C for 24 hours, the “core-shell” structure is preserved, but the core MNPs form an ordered structure and display highly ordered and atomic-like superlattice fringes (Fig. 2a–d). Analyses of the observed fringes and superlattice orientations suggest that the core particles in CS-SPs form a fcc superlattice with an estimated lattice constant of 10.5 ± 0.2 nm (Fig. 2a–c). Figure 2a–c display typical TEM images of these crystalline CS-SPs viewed along the [001], [011] and [112] zone axes, respectively. Typical TEM images further indicate that some CS-SPs include defects and stacking faults (Fig. 2d). High-resolution synchrotron small angle x-ray scattering (SAXS) characterization unambiguously confirms the assignment of a highly ordered fcc superlattice (Fig. 2e). The first broad SAXS peak represents strong diffuse scattering from the randomly distributed “shell” QDs, but other SAXS peaks are well assigned to Bragg peaks from an ideal fcc superlattice, corresponding to the Fm3m space group (Fig. 2e). The calculated lattice constant is 10.4 ± 0.2 nm (Supplementary Table 1), consistent with TEM observations (Fig. 2a–d). Correlating the SAXS-defined nearest inter-particle spacing of 7.3 nm to the average MNP size of 5.9 nm gives an inter-particle distance of 1.4 nm, consistent with coiled and intercalated oleate ligands on MNPs surfaces^{36, 37}. Given the average diameter of CS-SPs, the number of MNPs inside each CS-SP is estimated at $\sim 2020 \pm 230$, with a packing density of 39%. Upon fine-tuning the ratio of nanoparticles (both QDs and MNPs) to DTAB surfactant and the ratio of QDs to MNPs (Supplementary Table 2), we can obtain a wide range of the crystalline CS-SPs with an average diameter ranging from ~ 80 nm to ~ 360 nm (Fig. 2f–i). Higher magnification TEM images clearly show the core-shell structure of individual crystalline SPs for all sizes (Fig. 2j–m).

With their combination of both magnetism and fluorescence, CS-SPs have potential in various applications and technological devices. However, feasible applications, especially in biological systems, often require additional surface functionality, and this can be significantly hindered with CS-SPs that have a PVP polymer surface. To overcome this challenge and improve biocompatibility and colloidal stability, we encapsulate CS-SPs (~ 80 nm) with a thin silica shell through a sol-gel process^{38, 39}. TEM characterization shows that each CS-SP is uniformly coated with a 10.6 ± 0.7 nm thick silica shell (Fig. 3a). STEM line scan, element mapping and 3D TEM tomography show that the core-shell superstructure is preserved (Fig. 3b, Supplementary Fig. 6 and Supplementary Movie 3). DLS measurements reveal that the HD diameter dramatically decreases from ~ 130 nm to ~ 100 nm, similar to the TEM-determined size of ~ 100 nm (Fig. 3a and Supplementary Fig. 7). The decrease in HD size implies a complete removal of the bulky PVP layer. Importantly, these silica-coated CS-SPs (silica-CS-SPs) display a high degree of colloidal stability. No measureable changes in both the PL intensity and HD size can be observed after 6-month at 4 °C (Fig. 3c). These silica-CS-SPs exhibit superparamagnetism at room temperature with a saturation magnetization of 15.2 emu g^{-1} (1.4×10^{-14} emu per particle) (Fig. 3d and Supplementary Fig. 8 and Supplementary Table 3). The decreased magnetization compared to that of free Fe_3O_4 MNPs (63.7 emu g^{-1} , Supplementary Fig. 9) is due to non-magnetic components

inside each silica-CS-SP (the QDs, the silica layer, and the organic ligands) with a mass percentage of 75.2% (Supplementary Fig. 10 and Supplementary Table 3). The PL QY of the silica-CS-SPs was measured to be ~12% using a 405 nm excitation light, comparable with that of the PVP-coated CS-SPs (Supplementary Fig. 11). The decreased QY compared to free QDs (PL QY of 94%) is in large part a result of the MNPs strongly absorbing this wavelength light. Under the illumination of a continuous wave laser at a power density of 22 W cm^{-2} for ~ 2800 second, silica-CS-SPs did not show evidence either of blinking or photo-bleaching (Fig. 3e), thus making them an ideal tool for single particle tracking. To demonstrate the silica-layer enabled surface functionality, methoxy-polyethylene-glycol silane (mPEG-silane, MW5000) was conjugated to the CS-SPs (Supplementary Fig. 12). The resulting particles have nearly neutral surfaces ($-5.1 \pm 2.3 \text{ mV}$, Supplementary Fig. 13), minimal cell toxicity (Supplementary Fig. 14) and minimal protein-adsorption (Supplementary Fig. 15). These features allow for the ultimate use of these CS-SPs in various biological systems.

One of the persistent challenges in cell biology is to understand how a series of biomolecular activities can be integrated and modulated in the intracellular space. Several recent experiments have shown how magnetic nanoparticles could be used as actuators for remote control of signaling processes at the single cell level with subcellular resolution^{40, 41}. Yet, experimental failure is quite common, mainly due to particle polydispersities in size and magnetic content that not only make microinjection of nanoparticles difficult, but also render intracellular manipulation fragile due to the viscoelasticity of the cytoplasm. As a consequence, there is a pressing need for the fabrication of nanoparticles that have a small and uniform size but still show strong magnetism for efficient response, and are also highly fluorescent for monitoring their intracellular spatial distribution. The specifications of our silica-CS-SPs meet all these requirements. Given a particle diameter of ~100 nm, forces on the order of 1 pN, similar to the force generated by a molecular motor⁴², can be generated with a magnetic tip (Fig. 4a). These forces were sufficient to efficiently manipulate silica-CS-SPs across whole cells within minutes (Fig. 4b–d and Supplementary Movie 4 and 5). The movement of the silica-CS-SPs appears to be only marginally hindered by the cytoplasmic meshwork (Fig. 4b–d). The silica-CS-SPs are bright enough that their individual trajectories can be tracked with great accuracy (a pointing accuracy of ~15nm) throughout their transport within the cytoplasm (Fig. 4b and c). The key for success and reproducibility of these experiments is the superior homogeneity in both particle size and magnetic content of these silica-CS-SPs. We thus expect silica-CS-SPs, once decorated with targeting or signaling molecules, to constitute a powerful platform for the magnetic control/manipulation of intracellular processes.

Another biomedical application of interest of MNPs is their use as markers for MR imaging. The T_2 -weighted MR contrast is dramatically enhanced in silica-CS-SPs due to the high degree of aggregation of the core MNPs^{15, 43–46}, giving a T_2 relaxivity of $402.7 \text{ mM}^{-1}\text{S}^{-1}$, ~ 6.2 times larger than for the individual MNPs (Supplementary Fig. 16). Such a high T_2 relaxivity coupled with excellent photoluminescence properties, make silica-CS-SPs ideal MP/MR dual-modal *in vivo* imaging probes. As a demonstration, mPEG functionalized silica-CS-SPs with a HD diameter of ~120 nm ($200 \mu\text{L}$, 2 mg mL^{-1}) were intravenously

injected into mice bearing brain metastasis of a murine mammary carcinoma (MCAIV)⁴⁷. Both the optical MP images (Fig 4e–g) and T_2 -weighted MR images (Fig 4h–j) reveal that silica-CS-SPs selectively accumulate in the tumor region 24 hours after injection through an enhanced permeation and retention effect⁴⁸. These experiments demonstrate the potential of our silica-CS-SPs as unique powerful *in vivo* MP/MR dual-modal imaging probe.

In conclusion, we demonstrate a simple and effective method for assembling CdSe-CdS QDs with Fe₃O₄ MNPs into colloidal SPs with a “core-shell” superstructure. These SPs have remarkably narrow size distributions, so that the properties of single SPs reliably map onto the properties of the ensemble. Additional thermal annealing drives the crystallization of the “core” MNPs into a highly ordered supercrystal with an ideal fcc superlattice. The CS-SPs can be easily coated with a thin silica layer, providing surface functionality and colloidal stability as well as biocompatibility. Importantly, these silica-CS-SPs simultaneously exhibit uniform and tunable sizes, high magnetic content loading, maximized fluorophore loading on the surface, substantial colloidal stability, and versatile surface functionality. These features allow the utilization of these magneto-fluorescent SPs for *in vitro* intracellular manipulation and *in vivo* MR/MP dual-mode imaging. Given the versatility of our assembly strategy, we anticipate that, driven by various applications, SPs with a variety of compositions will also be achieved using this method.

Methods

Synthesis of QDs and MNPs nanocrystals

High-quality uniform CdSe-CdS core-shell QDs and Fe₃O₄ MNPs with tunable sizes are synthesized according to the literature methods^{49, 50}. Detailed information regarding synthesis can be found in the Supplementary Methods. As-synthesized nanocrystals were purified by precipitation with acetone and were dispersed in chloroform to form stock solutions with concentrations of 20–50 mg mL⁻¹.

Synthesis of CS-SPs with a random magnetic “core”

In a typical synthesis, 1 mL chloroform solution containing 4 mg 9.0-nm QDs and 6 mg 5.9-nm MNPs was injected to 1 mL dodecyltrimethylammonium bromide (DTAB) aqueous solution (20 mg mL⁻¹ in Nanopure water). The solution was thoroughly mixed by vortex for 5 seconds. After removing the chloroform from the mixture by blowing Ar at room temperature, a clear QD-MNP-micelle aqueous solution was obtained. This QD-MNP-micelle solution was swiftly injected into a 5mL poly(vinylpyrrolidone) (PVP, MW 55000) ethylene glycol (EG) solution (2 mM) under vigorous stirring with a stirring speed of 700 rpm for 30 min at room temperature. The resulting CS-SPs were isolated by centrifugation, re-dispersed in ethanol and stored at ~4 °C.

Synthesis of CS-SPs with a supercrystalline magnetic “core”

The synthesis procedure is the same as the synthesis of CS-SPs described above, except that an additional thermal annealing process was carried out after the CS-SPs synthesis. In this thermal annealing process, the resulting CS-SPs in PVP/EG solution was heated to 80 °C with a slow stirring speed (300 rpm) and kept for 24 hours before cooling to room

temperature. The resulting supercrystalline CS-SPs were isolated by centrifugation, redispersed in ethanol and stored at ~4 °C as a stock solution.

Synthesis of silica-CS-SPs

For a typical synthesis, 2 mg CS-SPs was dissolved in 20 mL ethanol. Under vigorous stirring, 3 mL deionized-water (DI-water) and 1 mL NH₃·H₂O solution was added dropwise in the reaction solution, followed by the addition of 50 μL TEOS. The final solution was kept stirring at room temperature for 20 min. The resulting silica-CS-SPs were isolated by centrifugation, washed with deionized-water and dissolved in 2 mL DI-water and stored at ~4 °C.

Synthesis of mPEG-silane functionalized silica-CS-SPs

2 mL silica-CS-SPs were diluted in 10 mL DI-water. Under magnetic stirring, 50 μL NH₃·H₂O solution and 20 μL TEOS were added into the solution, sequentially. After the mixture solution was heated to 70 °C, 1 mL mPEG-silane (MW 5000) aqueous solution (0.02 M) was dropped in. The reaction solution was kept stirring at 70 °C for 3 hrs and then stirred at room temperature for another 15 hrs. The resulting mPEG-silane functionalized silica-CS-SPs were isolated by centrifugation, washed three times with nanopure water and finally dissolved in 1 mL phosphate buffer solution (PBS, 1X) and stored at ~4 °C fridge.

Magnetic manipulation of the silica-CS-SPs in living cells

For manipulation in living cells, HeLa cells and Cos7 cell lines were cultured at 37°C in 5% CO₂ in Dulbecco's modified Eagle's medium (DMEM) supplemented with 10% fetal calf serum. For imaging and manipulation, cells were grown on 25 mm glass coverslips. Experiments were performed at 37 °C in a heating chamber placed on the inverted microscope. Microinjection was performed with the same borosilicate needles as described above and filled with a concentrated solution of SPs. After microinjection, the cells were left for 20 minutes recovery. In order to bring the tip close to the sample with the orientation adapted to each unique cell morphology, the magnetic tip was attached to a circular teflon holder, allowing us to rotate the tip in respect to the optical axis of the microscope, as described in Etoc et al.⁴¹. Tracking of the manipulated SPs was performed semi-manually using the Manual Tracking plugin of ImageJ.

Intravital multiphoton microscopy

All animal procedures were carried out following the Public Health Service Policy on Humane Care of Laboratory Animals and approved by the Institutional Animal Care and Use Committee of the Massachusetts General Hospital. Imaging studies were carried out using a MCAIV cranial window model in C3H mice⁵¹. MCAIV tumor cell pellet (~ 2.5×10⁵ cells) is injected into the exposed parenchymal space at about 0.1 mm depth. *In vivo* imaging is performed on established tumors on day 9 after pellet implantation.

***In vivo* imaging**—Fluorescein isothiocyanate–dextran/phosphate buffered saline solution (FITC-Dextran) was prepared for *in vivo* vessel tracing in a concentration of 10 mg mL⁻¹. Following tail vein injection of 100 μL of FITC-Dextran, a baseline vessel image was

acquired using multiphoton imaging described previously⁴⁷ on a custom-built multiphoton laser-scanning microscope using confocal laser-scanning microscope body (Olympus 300; Optical Analysis Corp.) and a broadband femtosecond laser source (High Performance MaiTai, Spectra-Physics). After acquisition of a baseline image, mPEG-silane functionalized silica-CS-SPs solution (200 μ L, 2 mg mL⁻¹) were intravenously injected via tail vein. Image slices were taken with 400 mW at a wavelength of 820 nm in three ROIs in tumor area and one in the healthy contra-lateral hemisphere. Images were taken with depths from 0 – 150 μ m. Imaging studies were performed with a 20X magnification, 0.95NA water immersion objective (Olympus XLUMPlanFI, 1-UB965, Optical Analysis). Image analysis was carried out using ImageJ.

***In vivo* magnetic resonance imaging study**

All experiments were performed on a 9.4 Tesla magnet (Magnex Scientific Ltd, Oxford, UK) equipped with a 60 mm inner diameter gradient coil (Resonance Research, Billerica, MA) and interfaced with a Bruker MRI console (Bruker Biospin, Billerica, MA). The gradient coil has a maximum strength of 1500 mT m⁻¹ and a rise time of 100 μ s. Images were acquired using a home built mouse head bird-cage coil. Mice were positioned on a custom made mouse cradle and anesthetized with 1.5% isoflurane in 50/50 O₂/medical air mixture with total flow rate of 1200 ml min⁻¹.

***T*₂-weighted RARE MRI**—*T*₂-weighted Rapid Acquisition with Refocused Echoes (RARE) images were acquired with the following acquisition parameters: TE = 10, RARE factor = 8, TR = 2500 ms, NA = 4, 15 image slices, 0.5 mm slice thickness, 125 μ m in-plane resolution. Tumor volume was determined from the *T*₂ hyperintense tumor region of the brain.

***T*₂ Maps**—*T*₂ maps were generated from multi-echo spin-echo and multi-echo gradient-echo images, respectively, using a custom written MATLAB program for voxel-wise fitting of the *T*₂ relaxation times. Multi-echo spin-echo image acquisition parameters were: TE = 10 ms, 15 echoes with 10 ms increment, TR = 2.5 s, 2 averages, FOV = 1.6 cm, matrix = 128 \times 128 (in-plane resolution 125 μ m), slice thickness = 0.5 mm, 15 image slices. Multi-echo gradient-echo image acquisition parameters were: TE = 2.5 ms, 10 echoes with 2.5 ms increment, TR = 1.5 s, 4 averages, FOV = 1.6 cm, matrix = 96 \times 96, slice thickness = 0.5 mm, 15 image slices.

Supplementary Material

Refer to Web version on PubMed Central for supplementary material.

Acknowledgments

This work received support from the NIH through 5-U54-CA151884 (M.G.B.), P01-CA080124 (R.K.J.), R01-CA126642 (M.G.B., D.F., R.K.J.), R01-CA163815 (R.K.J.), R01-CA096915 (D.F.), the ARO through the Institute for Soilder Nanotechnologies (W911NF-13-D-0001, M.G.B.), the Department of Energy through DE-FG02-07ER46454 (M.G.B.), the NIH funded Laser Biomedical Resource Center (LBRC) 9-P41-EB015871-26A1 (M.G.B.), Federal Share/National Cancer Institute Proton Beam Program Income Grants (R.K.J.), Mildred-Scheel-Fellowship (Deutsche Krebshilfe) by the German Cancer Aid (L.R.), a DoD Breast Cancer Research Innovator award (W81XWH-10-1-0016) (R.K.J.), the Human Frontier Science Program (grant no. RGP0005/2007) (M.D. and

M.G.B) and the program ANR-10-IDEX-0001-02 PSL (M.D.). M.B. and A.J. are supported by the NIH through R01-DA028299 and R01-NS076462 to A.J.. H.H. was supported by the Federal Ministry of Education and Research (BMBF, 01EZ0829). O.T.B. is supported by EMBO long-term fellowship. CHESS is supported by the NSF & NIH/NIGMS via NSF award DMR-0936384 (Z.W.). This work made use of the MRSEC Shared Experimental Facilities at MIT, supported by the National Science Foundation under award number DMR-08-19762.

References

1. Gibson RF. A review of recent research on mechanics of multifunctional composite materials and structures. *Compos Struct.* 2010; 92:2793–2810.
2. Suh WH, Suh YH, Stucky GD. Multifunctional nanosystems at the interface of physical and life sciences. *Nano Today.* 2009; 4:27–36.
3. Bigall NC, Parak WJ, Dorfs D. Fluorescent, magnetic and plasmonic-Hybrid multifunctional colloidal nano objects. *Nano Today.* 2012; 7:282–296.
4. Lee JE, Lee N, Kim T, Kim J, Hyeon T. Multifunctional mesoporous silica nanocomposite nanoparticles for theranostic applications. *Accounts Chem Res.* 2011; 44:893–902.
5. Macfarlane RJ, et al. Nanoparticle superlattice engineering with DNA. *Science.* 2011; 334:204–208. [PubMed: 21998382]
6. Wang T, et al. Self-assembled colloidal superparticles from nanorods. *Science.* 2012; 338:358–363. [PubMed: 23087242]
7. Dong AG, Chen J, Vora PM, Kikkawa JM, Murray CB. Binary nanocrystal superlattice membranes self-assembled at the liquid-air interface. *Nature.* 2010; 466:474–477. [PubMed: 20651688]
8. Talapin DV, et al. Quasicrystalline order in self-assembled binary nanoparticle superlattices. *Nature.* 2009; 461:964–967. [PubMed: 19829378]
9. Redl FX, Cho KS, Murray CB, O'Brien S. Three-dimensional binary superlattices of magnetic nanocrystals and semiconductor quantum dots. *Nature.* 2003; 423:968–971. [PubMed: 12827196]
10. Xia YS, et al. Self-assembly of self-limiting monodisperse supraparticles from polydisperse nanoparticles. *Nat Nanotechnol.* 2011; 6:580–587. [PubMed: 21857686]
11. Zhang YG, Lu F, Yager KG, van der Lelie D, Gang O. A general strategy for the DNA-mediated self-assembly of functional nanoparticles into heterogeneous systems. *Nat Nanotechnol.* 2013; 8:865–872. [PubMed: 24141539]
12. Quan ZW, Fang JY. Superlattices with non-spherical building blocks. *Nano Today.* 2010; 5:390–411.
13. Lu ZD, Yin YD. Colloidal nanoparticle clusters: functional materials by design. *Chem Soc Rev.* 2012; 41:6874–6887. [PubMed: 22868949]
14. Bakalova R, Zhelev Z, Aoki I, Kanno I. Designing quantum-dot probes. *Nat Photonics.* 2007; 1:487–489.
15. Bruns OT, et al. Real-time magnetic resonance imaging and quantification of lipoprotein metabolism in vivo using nanocrystals. *Nat Nanotechnol.* 2009; 4:193–201. [PubMed: 19265850]
16. Corr SA, Rakovich YP, Gun'ko YK. Multifunctional magnetic-fluorescent nanocomposites for biomedical applications. *Nanoscale Research Letters.* 2008; 3:87–104.
17. Kim J, et al. Multifunctional uniform nanoparticles composed of a magnetite nanocrystal core and a mesoporous silica shell for magnetic resonance and fluorescence imaging and for drug delivery. *Angew Chem Int Edit.* 2008; 47:8438–8441.
18. Kwon KW, Shim M. gamma-Fe₂O₃/II-VI sulfide nanocrystal heterojunctions. *J Am Chem Soc.* 2005; 127:10269–10275. [PubMed: 16028938]
19. Gu HW, Zheng RK, Zhang XX, Xu B. Facile one-pot synthesis of bifunctional heterodimers of nanoparticles: A conjugate of quantum dot and magnetic nanoparticles. *J Am Chem Soc.* 2004; 126:5664–5665. [PubMed: 15125648]
20. Trinh TT, Mott D, Thanh NTK, Maenosono S. One-pot synthesis and characterization of well defined core-shell structure of FePt@CdSe nanoparticles. *Rsc Adv.* 2011; 1:100–108.
21. Gao JH, et al. Intracellular spatial control of fluorescent magnetic nanoparticles. *J Am Chem Soc.* 2008; 130:3710–3711. [PubMed: 18314984]

22. Ruan G, et al. Simultaneous magnetic manipulation and fluorescent tracking of multiple individual hybrid nanostructures. *Nano Lett.* 2010; 10:2220–2224. [PubMed: 20450169]
23. Kim BS, Taton TA. Multicomponent nanoparticles via self-assembly with cross-linked block copolymer surfactants. *Langmuir.* 2007; 23:2198–2202. [PubMed: 17279714]
24. Mandal SK, et al. Encapsulation of magnetic and fluorescent nanoparticles in emulsion droplets. *Langmuir.* 2005; 21:4175–4179. [PubMed: 15835991]
25. Kim J, et al. Magnetic fluorescent delivery vehicle using uniform mesoporous silica spheres embedded with monodisperse magnetic and semiconductor nanocrystals. *J Am Chem Soc.* 2006; 128:688–689. [PubMed: 16417336]
26. Yi DK, et al. Silica-coated nanocomposites of magnetic nanoparticles and quantum dots. *J Am Chem Soc.* 2005; 127:4990–4991. [PubMed: 15810812]
27. Park JH, von Maltzahn G, Ruoslahti E, Bhatia SN, Sailor MJ. Micellar hybrid nanoparticles for simultaneous magnetofluorescent imaging and drug delivery. *Angew Chem Int Edit.* 2008; 47:7284–7288.
28. Di Corato R, et al. Multifunctional Nanobeads Based on Quantum Dots and Magnetic Nanoparticles: Synthesis and Cancer Cell Targeting and Sorting. *ACS Nano.* 2011; 5:1109–1121. [PubMed: 21218823]
29. Shen JM, et al. Luminescent/Magnetic Hybrid Nanoparticles with Folate-Conjugated Peptide Composites for Tumor-Targeted Drug Delivery. *Bioconjugate Chem.* 2012; 23:1010–1021.
30. Insin N, et al. Incorporation of iron oxide nanoparticles and quantum dots into silica microspheres. *ACS Nano.* 2008; 2:197–202. [PubMed: 19206619]
31. Lu ZD, et al. Direct assembly of hydrophobic nanoparticles to multifunctional structures. *Nano Lett.* 2011; 11:3404–3412. [PubMed: 21732588]
32. Kim HM, et al. Synthesis and high performance of magnetofluorescent polyelectrolyte nanocomposites as MR/near-infrared multimodal cellular imaging nanoprobe. *ACS Nano.* 2011; 5:8230–8240. [PubMed: 21932788]
33. Zhuang JQ, Wu HM, Yang YA, Cao YC. Supercrystalline colloidal particles from artificial atoms. *J Am Chem Soc.* 2007; 129:14166–14167. [PubMed: 17963395]
34. Zhuang JQ, Wu HM, Yang YA, Cao YC. Controlling colloidal superparticle growth through solvophobic interactions. *Angew Chem Int Edit.* 2008; 47:2208–2212.
35. Bai F, et al. A versatile bottom-up assembly approach to colloidal spheres from nanocrystals. *Angew Chem Int Edit.* 2007; 46:6650–6653.
36. Wang ZW, et al. Deviatoric stress driven formation of large single-crystal PbS nanosheet from nanoparticles and in situ monitoring of oriented attachment. *J Am Chem Soc.* 2011; 133:14484–14487. [PubMed: 21854066]
37. Lee B, et al. Comparison of structural behavior of nanocrystals in randomly packed films and long-range ordered superlattices by time-resolved small angle X-ray scattering. *J Am Chem Soc.* 2009; 131:16386–16388. [PubMed: 19863066]
38. Piao Y, Burns A, Kim J, Wiesner U, Hyeon T. Designed Fabrication of Silica-Based Nanostructured Particle Systems for Nanomedicine Applications. *Adv Funct Mater.* 2008; 18:3745–3758.
39. Selvan ST. Silica-coated quantum dots and magnetic nanoparticles for bioimaging applications (Mini-Review). *Biointerphases.* 2010; 5:Fa110–Fa115. [PubMed: 21171704]
40. Locatelli E, et al. Click chemistry for the assembly of gold nanorods and silver nanoparticles. *Chemistry.* 2011; 17:9052–9056. [PubMed: 21744406]
41. Etoc F, et al. Subcellular control Rac-GTPase signalling by magnetogenetic manipulation inside living cells. *Nat Nanotechnol.* 2013; 8:193–198. [PubMed: 23455985]
42. Fisher ME, Kolomeisky AB. The force exerted by a molecular motor. *Proc Natl Acad Sci USA.* 1999; 96:6597–6602. [PubMed: 10359757]
43. Bigall NC, et al. Colloidal ordered assemblies in a polymer shell-A novel type of magnetic nanobeads for theranostic applications. *Chem Mater.* 2013; 25:1055–1062.

44. Yoon TJ, Lee H, Shao HL, Hilderbrand SA, Weissleder R. Multicore assemblies potentiate magnetic properties of biomagnetic nanoparticles. *Adv Mater.* 2011; 23:4793–4797. [PubMed: 21953810]
45. Taboada E, Solanas R, Rodriguez E, Weissleder R, Roig A. Supercritical-Fluid-Assisted One-Pot Synthesis of Biocompatible Core(γ -Fe₂O₃)/Shell(SiO₂) Nanoparticles as High Relaxivity T-2-Contrast Agents for Magnetic Resonance Imaging. *Adv Funct Mater.* 2009; 19:2319–2324.
46. Xu FJ, Cheng CM, Chen DX, Gu HC. Magnetite Nanocrystal Clusters with Ultra-High Sensitivity in Magnetic Resonance Imaging. *Chemphyschem.* 2012; 13:336–341. [PubMed: 22095763]
47. Kodack DP, et al. Combined targeting of HER2 and VEGFR2 for effective treatment of HER2-amplified breast cancer brain metastases. *Proc Natl Acad Sci USA.* 2012; 109:E3119–E3127. [PubMed: 23071298]
48. Jain RK, Stylianopoulos T. Delivering nanomedicine to solid tumors. *Nat Rev Clin Oncol.* 2010; 7:653–664. [PubMed: 20838415]
49. Chen O, et al. Compact high-quality CdSe-CdS core-shell nanocrystals with narrow emission linewidths and suppressed blinking. *Nat Mater.* 2013; 12:445–451. [PubMed: 23377294]
50. Park J, et al. Ultra-large-scale syntheses of monodisperse nanocrystals. *Nat Mater.* 2004; 3:891–895. [PubMed: 15568032]
51. Yuan F, et al. Vascular-permeability and microcirculation of gliomas and mammary carcinomas transplanted in rat and mouse cranial windows. *Cancer Res.* 1994; 54:4564–4568. [PubMed: 8062241]

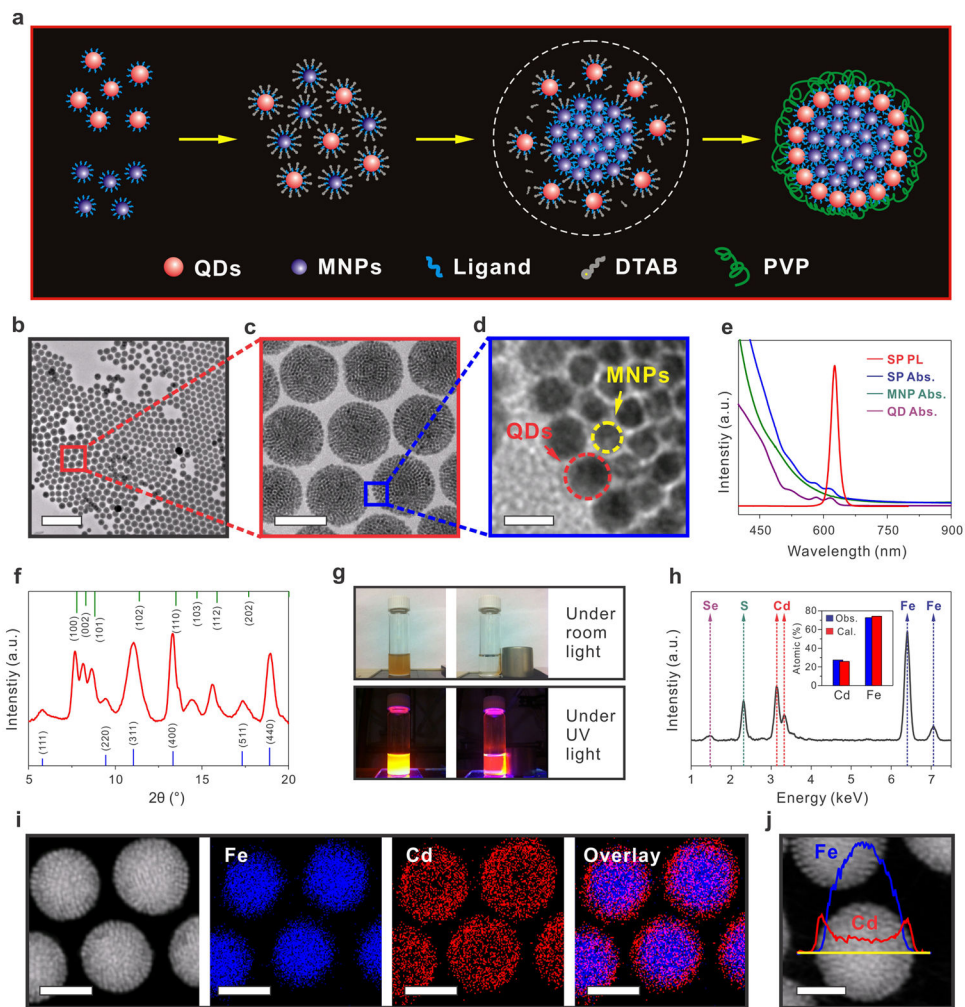


Figure 1. Synthesis and characterizations of core-shell structured SPs
a, Schematic of the formation of the core-shell supernanoparticles (CS-SPs). **b–d**, A set of TEM images of CS-SPs at different magnifications. Scale bars in **b–d** are 500 nm, 100 nm and 10 nm, respectively. **e**, Absorption spectra of CS-SPs (blue), MNPs (green), QDs (purple) and photoluminescence spectrum of CS-SPs (red). **f**, Wide-angle X-ray scattering pattern of CS-SPs. The stick patterns show the standard peak positions of bulk Fe_3O_4 (magnetite, bottom blue sticks) and wurtzite CdS (top green sticks). **g**, Photographs demonstrating the magnetic attraction of CS-SPs in the presence of a magnet under both room and UV light. **h**, Energy-dispersive X-ray spectrum (EDS) of CS-SPs shown in **b–d**. **i**, Images of dark-field scanning TEM and EDS elemental mapping from CS-SPs. Scale bars are 80 nm. **j**, EDS elemental line scan result. Scale bar is 60 nm.

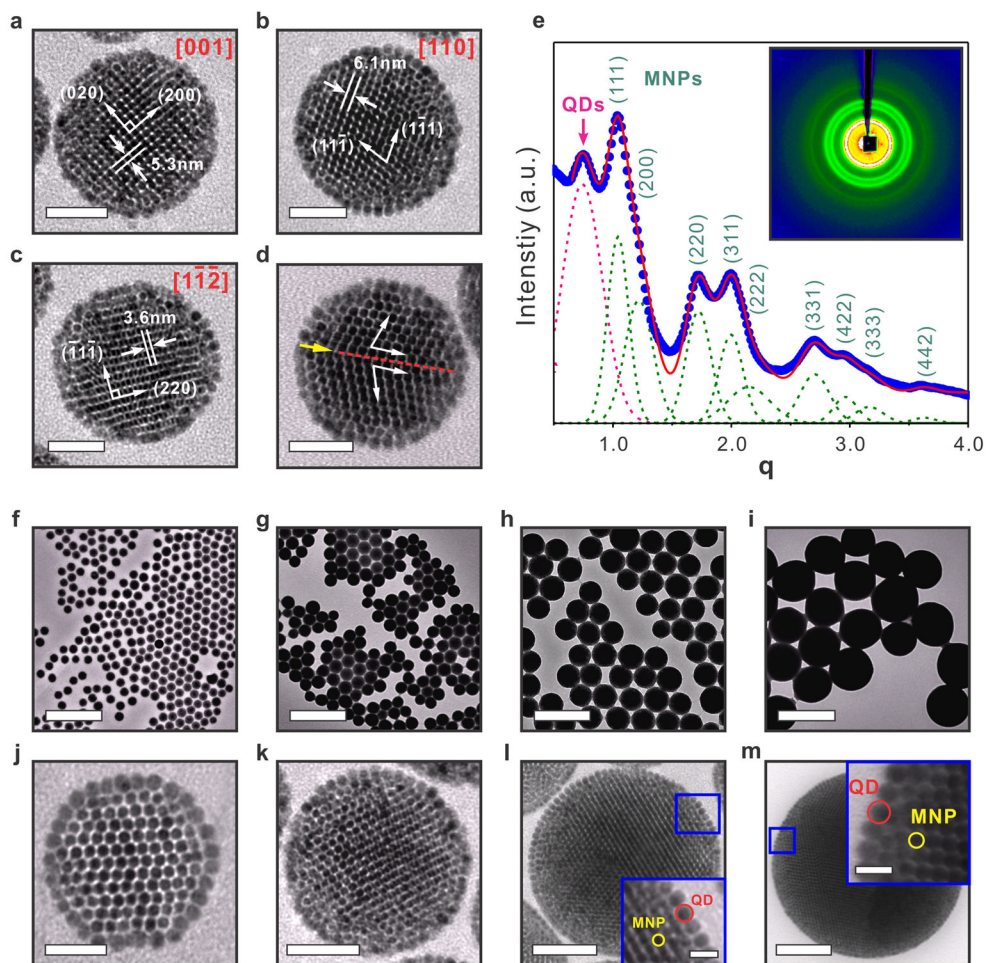


Figure 2. Supercrystalline CS-SPs and their size-controlled syntheses

TEM images of super-crystalline CS-SPs viewed along different zone axes **a**, [001], **b**, [110] and **c**, [112]. **d**, TEM image of a CS-SP with a stacking fault marked with a yellow arrow. Scale bars in **a–d** are 50 nm. **e**, The integrated data from the small-angle X-ray scattering (SAXS) pattern (inset) of CS-SPs show a position ratio series of $q/q_0 = 1/\sqrt{4/3}/\sqrt{8/3}/\sqrt{11/3}/\sqrt{4}/\sqrt{19/3}/\sqrt{8}/\sqrt{9}/\sqrt{12}$, (q_0 is the position of the (111) peak, $q = 4\pi \sin\theta/\lambda$), indicating a face-centered-cubic (fcc) close-packing of the MNPs. Large area TEM images (**f–i**) and higher magnification TEM images (**j–m**) of CS-SPs with an average diameter of 80 ± 9 nm (**f, j**), 120 ± 13 nm (**g, k**), 235 ± 30 nm (**h, l**) and 360 ± 60 nm (**i, m**). The insets in panel **l** and **m** are zoomed-in images of the blue squares. Scale bars in **f–i** are 500 nm. Scale bars in **j–m** are 30 nm, 50 nm, 70 nm and 100 nm, respectively. Scale bars in the insets of **l** and **m** are 15 nm. Red and yellow circles indicate the positions of QDs and MNPs, respectively.

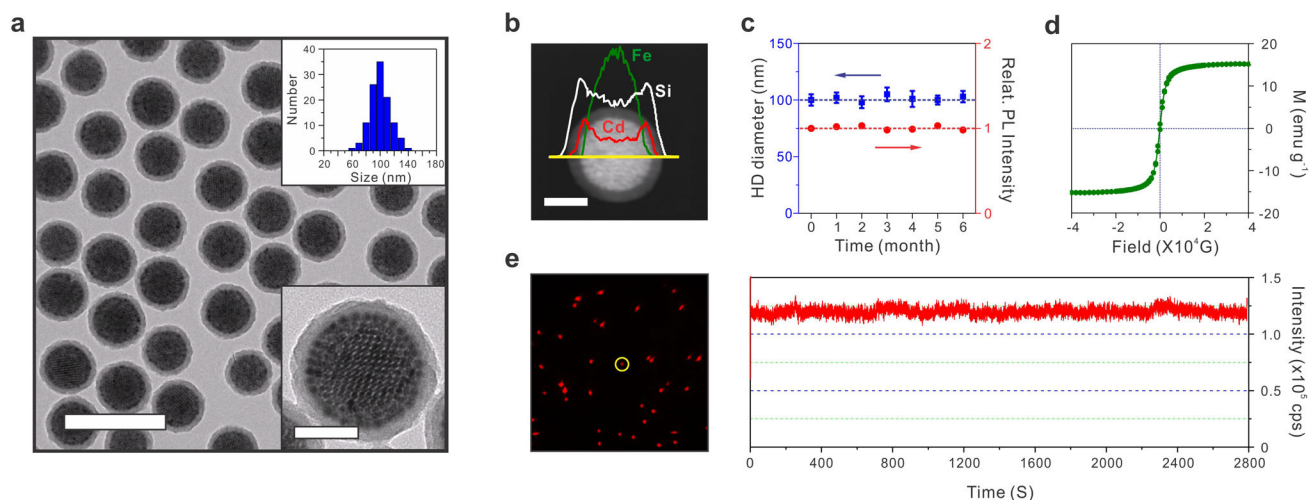


Figure 3. Silica-coated CS-SPs

a, A representative TEM image of silica-coated CS-SPs (silica-CS-SPs) with a thin layer thickness of $\sim 10.6 \pm 0.7$ nm. Scale bar is 200 nm. Insets show the histogram of the particle diameter distribution of silica-CS-SPs with an average diameter of 100 ± 12 nm (top right) and a zoomed-in TEM image of one silica-CS-SP (bottom right). Scale bar in the inset is 50 nm. **b**, An image of dark-field scanning TEM (STEM) and elemental line scan from a silica-CS-SP show that, while maintaining the core-shell superstructure, a thin layer of silica shell is uniformly deposited onto the CS-SP's surface. Scale bar is 50 nm. **c**, HD diameter and relative photoluminescence (relat. PL) intensity of silica-CS-SPs as a function of storage time. **d**, Magnetic characterization (magnetization versus magnetic field at 300K) shows the superparamagnetism of silica-CS-SPs. **e**, Left, epi fluorescence image of silica-CS-SPs on a glass substrate. Right, a representative photoluminescence time trace of a single silica-CS-SP.

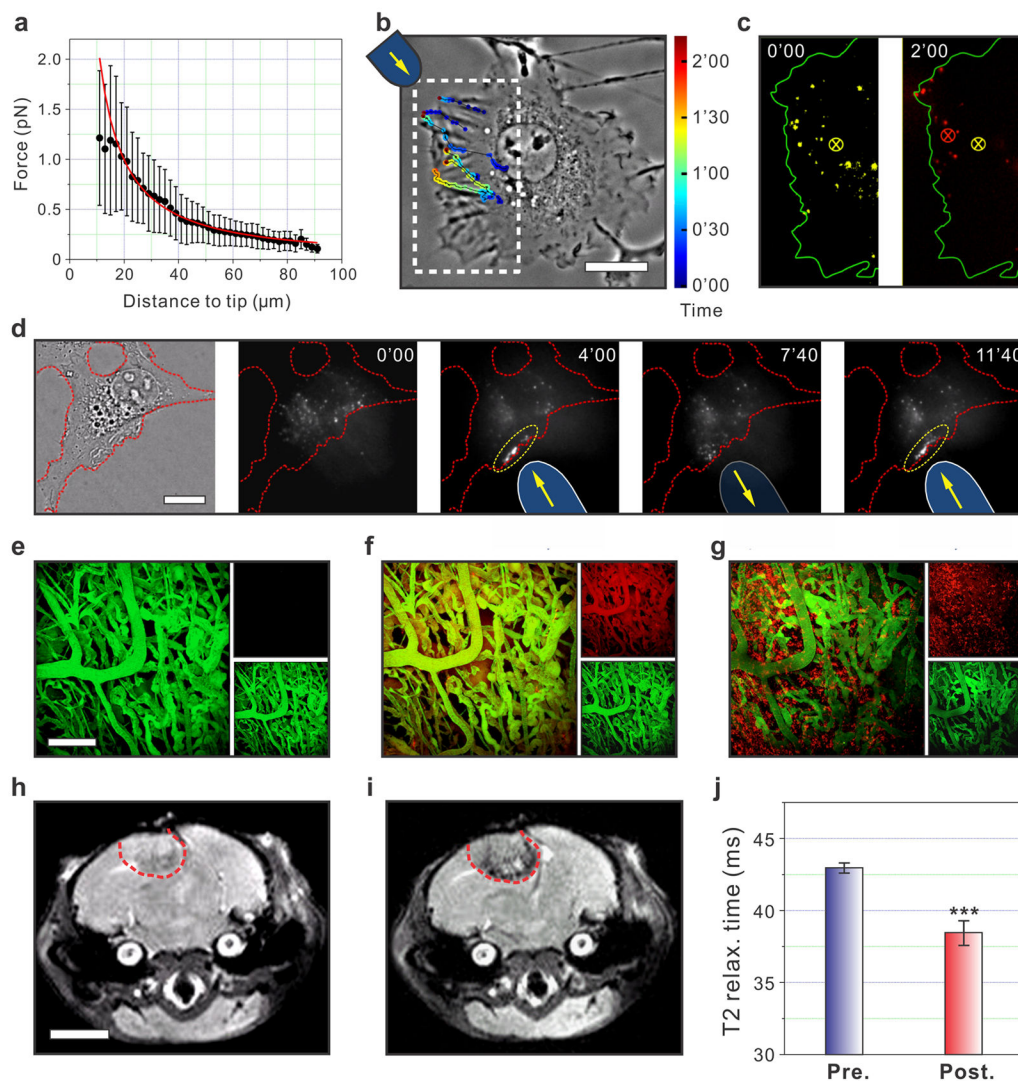


Figure 4. Silica-CS-SPs in biological applications

a, Force applied to individual silica-CS-SPs as a function of the distance from the magnetic tip (Supplementary Movie 6). A power law (red curve) fits the data. **b**, Tracking of individual silica-CS-SPs during their manipulation inside a Cos7 cell (Supplementary Movie 4). Positions along each trajectory are color-coded according to the time. Scale bar is 15 μm . **c**, Left: Fluorescence imaging of individual silica-CS-SPs (yellow) in the dashed line region of panel **b** and before the manipulation. The barycenter of the individual localizations is shown as a yellow cross. Right: superposition of the silica-CS-SPs fluorescence after 2 minutes (red), the barycenter of the individual localizations is shown as a red cross. **d**, Left: Transmission picture of a HeLa cell in which silica-CS-SPs have been microinjected. By bringing the magnetic tip in and out (blue bars), a reversible accumulation of silica-CS-SPs (yellow region) can be created at the cell periphery (indicated by red dashed line), in the direction of the magnetic tip (Supplementary Movie 5). Scale bar is 15 μm . Methoxy-polyethylene-glycol silane (mPEG-silane, MW5000) functionalized silica-CS-SPs (200 μL , 2mg/mL) were intravenously injected into C3H mice bearing brain metastasis of a murine

mammary carcinoma (MCAIV) with a cranial window model. Intravital multiphoton microscopy through the cranial window was carried out at different time point: pre-injection (e), 4-hour post-injection (f), and 24-hour post-injection (g). Scale bar is 150 μm . Images from red and green channels are shown in small panels (top: red channel, bottom: green channel). Green emission signals are generated from a blood vessel tracer (Fluorescein isothiocyanate–dextran, FITC-Dextran) and red emission signals are generated by mPEG functionalized silica-CS-SPs. *In vivo* T_2 -weighted magnetic resonance images of pre- (h) and 24-hour post- (i) injection of mPEG-silane functionalized silica-CS-SPs. 24-hour post-injection image show clear tumor visualization (denoted by the red-dash line). Scale bar is 3 mm. j, The corresponding T_2 relaxation (relax.) time fitting results for the tumor region at time points of pre-injection (Pre., blue bar) and 24-hour post-injection (Post., red bar). $n = 5$ mice, *** $P < 0.001$ (Student's t test).