

## MIT Open Access Articles

*Recognition of Platinum–DNA Damage  
by Poly(ADP-ribose) Polymerase-1*

The MIT Faculty has made this article openly available. **Please share** how this access benefits you. Your story matters.

**Citation:** Zhu, Guangyu, Paul Chang, and Stephen J. Lippard. "Recognition of Platinum–DNA Damage by Poly(ADP-ribose) Polymerase-1." *Biochemistry* 49.29 (2010) : 6177-6183.

**As Published:** <http://dx.doi.org/10.1021/bi100775t>

**Publisher:** American Chemical Society

**Persistent URL:** <http://hdl.handle.net/1721.1/64758>

**Version:** Author's final manuscript: final author's manuscript post peer review, without publisher's formatting or copy editing

**Terms of Use:** Article is made available in accordance with the publisher's policy and may be subject to US copyright law. Please refer to the publisher's site for terms of use.



# Recognition of Platinum-DNA Damage by Poly(ADP-Ribose) Polymerase-1<sup>†</sup>

Guangyu Zhu<sup>‡</sup>, Paul Chang<sup>§,¶,\*</sup> and Stephen J. Lippard<sup>‡,§,\*</sup>

<sup>‡</sup>*Department of Chemistry*, <sup>§</sup>*Koch Institute for Integrative Cancer Research* and <sup>¶</sup>*Department of Biology*,  
*Massachusetts Institute of Technology, 77 Massachusetts Ave., Cambridge, Massachusetts 02139.*

<sup>†</sup> This work was supported by grants from the Rita Allen Foundation and the Sidney Kimmel Foundation for Cancer Research to P.C. and from the National Cancer Institute (CA034992) to S.J.L.

\* To whom correspondence should be addressed. P.C. E-mail: pchang2@mit.edu. Telephone: (617) 324-3879. Fax: (617) 324-6284. S.J.L. E-mail: lippard@mit.edu. Telephone: (617) 253-1892. Fax: (617) 258-8150.

**RECEIVED DATE (to be automatically inserted after your manuscript is accepted if required according to the journal that you are submitting your paper to)**

TITLE RUNNING HEAD: PARP-1 binding to platinum-damaged DNA

ABBREVIATIONS: AMD, automodification domain; ADP-HPD, adenosine diphosphate (hydroxymethyl)pyrrolidinediol; BER, base excision repair; cDDP, *cis*-diamminedichloroplatinum(II); cDPCP, *cis*-diammine(pyridine)chloroplatinum(II) or pyriplatin; CFE, cell-free extract; DBD, DNA-binding domain; dsDNA, double-stranded DNA; DOXO, doxorubicin; EMSA, electrophoretic mobility shift assay; ICL, interstrand cross-link; LB, lysis buffer; MMR, mismatch repair; NAD<sup>+</sup>, nicotinamide adenine dinucleotide; NER, nucleotide excision repair; PAGE, polyacrylamide gel electrophoresis; pADPr, poly(ADP-ribose); PARG, poly(ADP-ribose) glycohydrolase; PARP-1, poly(ADP-ribose) polymerase-1; XRCC1, X-ray repair cross complementing 1.

ABSTRACT: Poly(ADP-ribose) polymerase-1 (PARP-1) was recently identified as a platinum DNA damage response protein. To investigate the binding properties of PARP-1 to different platinum-DNA adducts in greater detail, biotinylated DNA probes containing a site-specific cisplatin 1,2-d(GpG) or 1,3-d(GpTpG) intrastrand cross-link, or a cisplatin 5'-d(GC)/5'-d(GC) interstrand cross-link (ICL) were utilized in binding assays with cell free extracts (CFEs) in vitro. The activated state of PARP-1 was generated by treating cells with a DNA damaging agent or by addition of NAD<sup>+</sup> to CFEs. PARP-1 binds with a higher affinity to cisplatin-damaged DNA compared to undamaged DNA, and the amount of the protein that binds to the most common cisplatin-DNA cross-link, 1,2-d(GpG), is greater than to other types of cisplatin-DNA cross-links. Both DNA damage-activated and unactivated PARP-1 binds to cisplatin damaged DNA, and both automodified and cleaved PARP-1 bind to cisplatin-DNA lesions. The role of poly(ADP-ribose) (pADPr) in mediating PARP-1 binding to platinum damage was further investigated. PARP-1 binding to the cisplatin 1,2-d(GpG) cross-link decreases upon automodification, and overactivated PARP-1 loses its affinity for the cross-link. Elimination of pADPr facilitates binding of PARP-1 to the cisplatin 1,2-d(GpG) cross-link. PARP-1 also binds to DNA damaged by other platinum compounds including oxaliplatin and pyriplatin, indicating protein affinity for the damage in a platinum-specific manner rather than recognition of distorted DNA. Our results reveal the unique binding properties of PARP-1 to platinum-DNA damage, providing insights into, and a better understanding of, the cellular response to platinum-based anticancer drugs.

Platinum-based chemotherapy has been widely used in the clinic for over 30 years. Three FDA-approved platinum anticancer drugs, cisplatin, oxaliplatin and carboplatin, either alone or in combination with other anticancer drugs, have been used to treat numerous patients with a variety of cancers (1). These bifunctional platinum drugs attack DNA to form both intrastrand and interstrand cross-links (ICLs) that block transcription and trigger apoptosis (2). Cisplatin forms 1,2-d(GpG) cross-links as the major adduct, with 1,3-d(GpTpG) cross-links and ICLs appearing less frequently (3). Very recently, a monofunctional platinum compound, *cis*-diammine(pyridine)chloroplatinum(II) (cDPCCP, or pyriplatin; Figure 1), exhibited anticancer activity against colorectal cancer cells overexpressing an organic cation transporter and a significantly different mechanism of transcription inhibition of RNA polymerase II compared to that of cisplatin (4-5).

Poly(ADP-ribose) polymerases (PARPs) are a family of proteins present in eukaryotes. PARP-1 is the most studied PARP, playing pivotal roles in DNA replication, transcriptional regulation, and DNA damage repair. PARP-1 is one of the most abundant non-histone nuclear proteins, with  $10^5$  to  $10^6$  copies per cell (6). PARP-1 contains three domains. There is a DNA-binding domain (DBD) containing two zinc finger motifs, an automodification domain (AMD) that functions as the target of direct covalent self-modification, and a carboxyl-terminal catalytic domain that polymerizes linear or branched chains of ADP-ribose onto acceptor proteins. PARP-1 utilizes nicotinamide adenine dinucleotide ( $\text{NAD}^+$ ) as the substrate to add pADPr onto itself (automodification) or other acceptor proteins (hetero- or transmodification), including histone H1 and transcription factors. Once polymerized, pADPr is hydrolyzed by poly(ADP-ribose) glycohydrolase (PARG) (7).

PARP-1 functions in the DNA damage response. Whereas the catalytic activity of PARP-1 is low under physiological conditions, PARP-1 activity is highly upregulated following DNA damage (8). Such PARP-1 activation recruits DNA damage-response proteins to the sites of modification. These proteins include XRCC1 and DNA ligase III, which then trigger the base excision repair (BER) pathway. If the DNA is severely damaged, PARP-1 will initiate necrosis by depletion of  $\text{NAD}^+$  and ATP in the cells (9-10).

The development of PARP-1 inhibitors as anticancer drugs is an emerging field of drug discovery. Several PARP inhibitors have entered into clinical trials for various types of solid tumors, especially BRCA-mutated breast or ovarian cancers (11-13). Inhibitors targeting the catalytic domain of PARP prevent polymerization of pADPr during DNA damage and thereby block the recruitment of other DNA damage response proteins. PARP-1 inhibition therefore results in synthetic lethality of tumors with genetic lesions in DNA repair pathways such as BRCA1/2 because multiple DNA damage repair pathways are blocked. Since cisplatin treatment of cancer cell results in DNA damage, combinatorial therapy with cisplatin and PARP-1 inhibitors in DNA damage repair deficient cells could similarly result in symbiotic lethality. The strategy of using co-treatment with PARP-1 inhibitors has made it feasible to overcome platinum-based drug resistance. Thus, PARP-1 inhibitors sensitize specific cancer cell types to cisplatin. For example, the PARP inhibitor AZD2281 sensitizes BRCA2-deficient cells but not BRCA2-proficient cells to cisplatin (14).

Recently we identified PARP-1 as a protein that binds to platinum damaged DNA using PtBP<sub>6</sub>, a photoreactive analogue of cisplatin. PARP-1 binds to PtBP<sub>6</sub> 1,2-d(GpG) and 1,3-d(GpTpG) intrastrand cross-links and to 5'-(GC)/5'-(GC) ICLs (15-17). The photo-cross-linking efficiency is higher in the presence of PARP-1 inhibitors, suggesting that PARP-1 mediates the binding of damage response proteins (18). However, the specificity of PARP-1 binding to different cisplatin-DNA cross-links and the potential binding of PARP-1 to DNA damage by other platinum anticancer compounds have not yet been investigated. Moreover, the effect of automodification of PARP-1 by pADPr to platinum-damaged DNA needs further elucidation.

To provide this information, in the present study we investigated the binding properties of PARP-1 to platinum-damaged DNA in greater detail. PARP-1 binding to a variety of cisplatin-DNA lesions was examined, and the relative affinity of PARP-1 for damaged vs. undamaged double-stranded DNA (dsDNA) was studied. We also determined that PARP-1 recognizes oxaliplatin- and pyriplatin-DNA

adducts. The effects of PARP-1 automodification on its binding to the platinum damage were further explored. The potential roles of PARP-1 in the platinum-DNA damage response are discussed.

## EXPERIMENTAL PROCEDURES

*Materials and Methods.* All chemicals and solvents were purchased from commercial sources. Analytical and preparative HPLC was performed on an Agilent 1200 HPLC system. Polyacrylamide gel electrophoresis (PAGE) on DNA samples was performed on a Protean II xi Cell from Bio-Rad. SDS-PAGE analysis of protein samples was carried out using a Criterion Cell from Bio-Rad. UV-vis spectra were recorded on an HP 8453 spectrometer. Platinum analysis was performed by flameless atomic absorption spectrometry on a Perkin-Elmer AAnalyst 300 system. Western blots were run using SuperSignal Western Blot system from Pierce, Rockford, IL. Rabbit anti-PARP-1 polyclonal antibody was from Affinity Bioreagents, Rockford, IL. Dynabeads MyOne Streptavidin C1 was purchased from Invitrogen, Carlsbad, CA. Oligonucleotides were obtained from Integrated DNA Technologies, Coralville, IA. cDPCP and [Pt(*R,R*-DACH)Cl<sub>2</sub>] (DACH=1,2-diaminocyclohexane) were kindly provided by Dr. Katherine Lovejoy from the Department of Chemistry at MIT.

*Preparation of Site-Specifically Modified Platinum-DNA Probes.* Cisplatin-modified 1,2-d(GpG) and 1,3-d(GpTpG) probes were synthesized as reported (19) and characterized by native PAGE (Figure S1). cDDP-ICL was prepared following published procedures (17). For oxaliplatin-modified DNA probes, we used [Pt(*R,R*-DACH)Cl<sub>2</sub>] as the starting material. A 21 mM aqueous solution of [Pt(*R,R*-DACH)Cl<sub>2</sub>] was activated by adding 1.98 equivalents of AgNO<sub>3</sub> followed by agitation overnight in the dark at room temperature. The suspension was centrifuged. To a solution of 0.21 mM top strand in 10 mM NaH<sub>2</sub>PO<sub>4</sub> pH 6.3, 1.2 equivalents of activated [Pt(*R,R*-DACH)Cl<sub>2</sub>] were added. The reaction mixture was incubated in the dark at 37 °C for 8 h. The reaction was stopped by freezing the solution. PtDACH-modified top strand DNA was purified by ion exchange HPLC (Dionex DNAPac PA-100, linear gradient, 0.48 M NaCl to 0.55 M NaCl in 25 mM Tris-HCl pH 7.4 over 11 min). After purification, the platinated DNA

solution was dialyzed against H<sub>2</sub>O and lyophilized. The platination level was confirmed by UV-vis and atomic absorption spectroscopy, which yielded a Pt/DNA ratio of  $0.95 \pm 0.04$ . A 5-nmol quantity of the platinated top strand was annealed to 1 equivalent of bottom strand containing a biotin moiety in a buffer comprising 0.25 mM NaCl, 2 mM MgCl<sub>2</sub>, 10 mM Tris-HCl pH 7.4. The duplex was purified by a 12% native-PAGE. The cDPCP-modified duplex was synthesized as described elsewhere (4).

*Cell Culture and Transfection.* HeLa S3 cells were grown in DMEM high glucose supplemented with 10% FBS, 1% penicillin, and streptomycin at 37 °C, 5% CO<sub>2</sub>. Transfection was performed as described elsewhere (20). Briefly, at the time of transfection, cells were resuspended at a concentration of  $1 \times 10^6$  cells/mL in the medium without antibiotics. Cell cultures (40 mL) were transfected with 40 µg of eGFP-PARP-1 plasmid using 40 µL of 293fectin™ transfection reagent (Invitrogen, Carlsbad, CA) overnight. Cells were treated with 0.2 µM latrunculin B for 1 h to disrupt the microfilament network prior to cell lysis. For PARP-1 activation, cells were treated with 10 mM H<sub>2</sub>O<sub>2</sub> for 30 min or with 5 µM doxorubicin (DOXO; Sigma, St. Louis, MO) for 1 h prior to cell lysis.

*Cell-Free Extract (CFE) Preparation.* HeLa S3 cells were centrifuged at  $400 \times g$  for 3 min at 4 °C. Cell pellets were washed twice with ice-cold PBS prior to resuspension in cell lysis buffer (LB) containing 150 mM NaCl, 50 mM HEPES, 1 mM MgCl<sub>2</sub>, 0.5% (v/v) Triton X-100, 1 mM DTT, 1 mM EGTA, pH 7.4, with an EDTA-free protease inhibitor tablet (Roche, Branford, CT). For  $1 \times 10^7$  cells, a 146 µL quantity of LB was used. The mixture was incubated on ice for 10 min and spun at  $5,000 \times g$  for 5 min. The supernatant was collected and supplemented with 1 µM cytochalasin D and 1 µM nocodazole. For ARH3 or NAD<sup>+</sup> pretreatment conditions, CFE was either incubated with 0.1 mg/mL ARH3 at 4 °C for 30 min, or with 1 mM NAD<sup>+</sup> at 4 °C for 30 min before the binding assay (20).

*PARP-1 Binding Assay.* Dynabeads MyOne Streptavidin C1 were washed 3 times with LB. To a 50 µg quantity of Dynabeads, 25 pmol of DNA probes were added. The mixture was incubated in LB at 25 °C for 30 min to allow binding of the DNA probes. The supernatant was removed with the help of a magnet. Measured amounts of CFE were incubated with the beads at 4 °C for 1 h. The mixture was then washed 3 times with LB. The protein mixture was released into 15 µL of 1X LDS loading buffer (Invi-



trogen, Carlsbad, CA) by heating at 95 °C for 5 min. The samples were resolved on either precast 4-12% Bis-Tris gels, or by 8% SDS-PAGE. For the post-treatment of ARH3, the binding reaction mixture was washed twice with LB and treated with 0.1 mg/mL ARH3 for 30 min at 25 °C. The beads were washed twice with LB and the protein mixture was released in LDS loading buffer.

## RESULTS

*Design of DNA Sequences.* We chose to investigate 21-bp oligonucleotide duplexes containing site-specific damage by bifunctional or monofunctional platinum compounds (Figure 2). The sequences are identical in each of the probes except for, in the center of the duplex, a cisplatin 1,2-d(GpG) cross-link (cDDP-G\*G\*), a cisplatin 1,3-d(GpTpG) cross-link (cDDP-G\*TG\*), a cisplatin ICL (cDDP-ICL), an oxaliplatin 1,2-d(GpG) cross-link (PtDACH-G\*G\*), or a pyriplatin dG lesion (cDPCP-G\*). In this manner we were able to obtain the best comparison of PARP-1 binding to different kinds of platinum-DNA damage. A no-platinum control probe (NoPt) was also synthesized. Each of the probes contains a biotin moiety for binding to streptavidin coated magnetic beads.

*Synthesis and Characterization of 21-bp DNA Probes.* For the synthesis of probes containing site-specific cisplatin/oxaliplatin intrastrand cross-links or a pyriplatin-modified dG, the top strand was platinated and purified first. Platinated top strands were annealed with biotinylated bottom strands to obtain the duplexes. The purity of these duplexes was confirmed by a non-denaturing gel (Supporting Information Figure S1). The cisplatin ICL probe was synthesized as described previously (17). An analytical denaturing PAGE gel revealing the starting materials and cDDP-ICL is shown in Figure S2. Removal of the ICL by treatment with NaCN confirmed that cross-link results from platinum.

*PARP-1 Binding Assay Strategy.* A PARP-1 binding assay was performed in vitro using cell free extracts (CFEs). Biotinylated DNA probes were pre-bound to streptavidin-coated magnetic beads in LB. The magnetic beads containing the DNA probes with different platinum adducts were incubated with CFE. After incubation, the complexes were washed stringently with LB to remove non-specifically bound proteins. The DNA-Pt-protein complexes were precipitated and resolved by SDS-PAGE. Identifi-

cal amounts of each reaction were loaded to quantify the amount of total protein bound to the DNA probe. PARP-1 concentrations in each sample were detected by immunoblotting with a PARP-1 antibody.

There are several advantages of utilizing this PARP-1 binding strategy compared with traditional electrophoretic mobility shift assays (EMSAs) using purified proteins. First, PARP-1 is in a dynamic equilibrium with PARG, and the activity of PARP-1 partially requires its associated proteins. Therefore, use of a CFE is the better way to mimic the cellular environment *in vitro*. Second, the activation state of PARP-1 can be controlled in this system. For example, the binding of activated PARP-1 to specific platinum adducts can be adjusted by first treating cells with DNA-damaging agents, and the amount of pADPr polymer in CFE can be modified by addition of PARG or NAD<sup>+</sup>.

*Binding of Different Forms of PARP-1 to Cisplatin-Damaged DNA.* We first investigated the binding of endogenous PARP-1 to cisplatin-DNA cross-links. Three biotinylated DNA probes were used, cDDP-G\*G\*, cDDP-G\*TG\*, and cDDP-ICL. An unplatinated control (NoPt) was included in this assay in order to differentiate between binding of PARP-1 to damaged and undamaged DNA. Doxorubicin, a DNA damaging agent, was used to activate PARP-1 in HeLa S3 cells, and the binding of endogenous PARP-1 to the DNA probe was tested (21). A PARG inhibitor, adenosine diphosphate (hydroxymethyl)pyrrolidinediol (ADP-HPD) (22), was included during the steps of cell lysing and protein binding to the DNA probe in the PARP-1 binding assay in order to suppress the endogenous activity of PARG. Increasing amounts of DNA probes bound to magnetic beads were incubated with a constant amount of CFE. Immunoblot results showed that the approximately 115 kDa band is the native form of PARP-1, and the band above 115 kDa corresponds to automodified PARP-1. Both native form and automodified PARP-1 bind to cisplatin-DNA damage (Figure 3A). There is larger amount of PARP-1 that binds to cDDP-G\*G\* compared to cDDP-G\*TG\*, cDDP-ICL, or NoPt. Activated PARP-1 also binds to cisplatin-damaged DNA probes (Figure 3B). More activated PARP-1 binds to cisplatin-DNA intrastrand cross-links than to a cisplatin ICL or a native DNA duplex. We also transfected HeLa S3 cells with eGFP-PARP-1 plasmid to obtain CFE containing overexpressed PARP-1, and binding assay was carried out in the absence of ADP-HPD (20). The result indicated that overexpressed PARP-1 also

binds to cDDP-G\*G\*, cDDP-G\*TG\*, and cDDP-ICL (Figure S3). Cleaved PARP-1, corresponding to the bands below the native eGFP-PARP-1 band around 140 kDa, retains its binding affinity for cisplatin-DNA cross-links. Including all the native, automodified, and cleaved forms, the binding affinity of PARP-1 to a cisplatin 1,2-d(GpG) cross-link is the greatest.

*More PARP-1 Binds to a 1,2-d(GpG) Cross-Link than to Unplatinated DNA.* We studied the binding of endogenous PARP-1 to a cisplatin 1,2-d(GpG) cross-link in more detail. In this assay, a constant amount DNA probe was incubated with increasing amounts of CFE. After binding the protein to the probes, the complexes were washed stringently with LB, and the samples were treated with ARH3, another pADPr glycohydrolase, to eliminate the pADPr polymer (23). The activity of ARH3 is not affected by ADP-HPD. Therefore, all ARH3 treated forms of PARP-1 that bind to the cisplatin-DNA damage will migrate at 115 kDa on an SDS-PAGE gel. Figure 4 shows the binding of PARP-1 to a cisplatin 1,2-d(GpG) cross-link and an unplatinated control. When the protein-Pt-DNA complex was not treated with ARH3, the automodified PARP-1 binds to DNA (Figure 4A, lanes 1-3, 7-9; Figure 4B, lanes 1-3, 7-9), and treatment of ARH3 results in a single band (Figure 4A, lanes 4-6, 10-12; Figure 4B, lanes 4-6, 10-12). More PARP-1 binds to a cDDP 1,2-d(GpG) cross-link than to an unplatinated control, when both unactivated and activated protein samples were utilized (Figure 4A, lanes 1-3 and Figure 4B, lanes 1-3; Figure 4A, lanes 7-9 and Figure 4B, lanes 7-9). When PARP-1 is activated, less protein binds to the platinum-DNA damage (Figure 4A, lanes 1-3 and lanes 7-9). Quantification of the gel illustrating the binding difference is presented in Figure 4C.

*PARP-1 Binds to Different Platinum Lesions.* The binding of PARP-1 to different platinum-DNA lesions was studied. In order to better quantitate the amount of non-modified PARP-1 that binds, we used low concentrations of CFE so that only the native form of the bound protein is detectable. cDDP-G\*G\*, PtDACH-G\*G\*, and cDPCP-G\* DNA probes were included to elucidate the binding affinity of endogenous PARP-1. PARP-1 binds to the three DNA probes modified by different platinum compounds: cisplatin, oxaliplatin and cDPCP (Figure 5A). Compared to the activated PARP-1, more unactivated PARP-1 bound to damaged DNA (Figure 5B). There is a significantly greater amount of proteins that bind to platinated DNA than the proteins that bind to unplatinated control (Figure 5B).

*Over-activation of PARP-1 Inhibits Its Binding to Cisplatin-Damaged DNA.* We further examined the role of pADPr in the binding of PARP-1 to cisplatin-damaged DNA. HeLa S3 cells were treated with and without doxorubicin, then CFE generated. Prior to binding to the DNA probes, the CFE was pretreated with either NAD<sup>+</sup> to overactivate PARP-1, or with ARH3 to eliminate pADPr. In agreement with the results mentioned above, less activated PARP-1 bound to cisplatin-modified DNA (Figure 6, lanes 2, 4, 6) compared to the unactivated protein (Figure 6, lanes 1, 3, 5). Additionally, more PARP-1 bound when the samples were pretreated with ARH3 (Figure 6, lanes 3 and 4), whereas overactivation of PARP-1 by NAD<sup>+</sup> addition significantly decreased the binding affinity of the protein (Figure 6, lane 6).

## DISCUSSION

In the presence of DNA damage, PARP-1 is activated to catalyze the NAD<sup>+</sup>-dependent addition of pADPr polymer to receptor proteins including PARP-1 itself, resulting in either damage repair or cell death (8). PARP-1 also plays a role in transcription regulation by modulating chromatin structure, acting as an enhancer-binding factor, functioning as a transcriptional coregulator, or serving as a component of insulators (24). PARP-1 plays a role in the repair of other types of DNA lesions including pyrimidine dimers, and a role for PARP-1 in platinum-DNA damage recognition has been recently discovered by a photo-cross-linking strategy (15-17).

It is argued that automodified PARP-1 bound to DNA can still be cross-linked under the photo-cross-linking condition published previously (15). The assumption was that PARP-1 dissociates from the platinum damage only after heavy automodification, and insufficient levels of modification of PARP-1 may result in its shielding of the damage from repair (25). Our results clearly show that both native and automodified PARP-1 bind to platinum-DNA lesions, with less of the automodified form binding to the damage. However, when PARP-1 is overactivated by NAD<sup>+</sup>, very small amounts of protein bind to the cisplatin 1,2-d(GpG) lesion (Figure 6, Lane 6). The fact that activated PARP-1 still binds to platinum-DNA damage in our experiment is in agreement with the model that, under physiological conditions,

when DNA is damaged by platinum drugs and PARP-1 is activated, the protein shields the damage from repair until the downstream pathways are activated.

Numerous reports support the notion that PARP-1 binds to specific regions of DNA in a sequence-dependent manner. PARP-1 itself has an affinity for dsDNA *in vitro* (26-28). PARP-1 also recognizes other forms of DNA, including negatively supercoiled matrix attachment sequences and structurally complex cruciform DNA (29-30). The affinity of unmodified dsDNAs toward PARP-1 is lower than the affinity of end-blocked dsDNA in the trans-poly(ADP-ribosylation) reaction according to an *in vitro* kinetic study, and the affinity of both unmodified and modified dsDNA to PARP-1 was much lower in an auto-poly(ADP-ribosylation) reaction (31). Our results indicate that PARP-1 has an affinity for both unmodified and platinum-damaged dsDNA. More PARP-1 binds to the platinum-damaged dsDNA, indicating the role of PARP-1 in the cellular response to platinum damage.

A previous report showed that addition of the PARP inhibitor CEP-A increased the photo-cross-linking of proteins to a DNA probe containing a PtBP<sub>6</sub> 1,2-d(GpG) cross-link in Ntera2, BxPC3, and U2OS cells, but not in HeLa cells. In addition, PARP-1 inhibitors did not sensitize HeLa cells to cisplatin (18). Our results here further confirm that PARP-1 automodification attenuates its activity in platinum-DNA damage recognition in HeLa S3 cells. When PARP-1 is moderately activated, the protein binds to cisplatin-damaged as well as undamaged DNA in lesser amounts, and overactivated PARP-1 does not bind to the lesion. The amount of PARP-1 binding to a cisplatin 1,2-d(GpG) cross-link is the largest compared to other types of cisplatin-DNA lesions, which is consistent with the previous finding that a 1,2-d(GpG) cross-link more efficiently activates the protein (18).

Oxaliplatin has been approved by FDA for the treatment of colorectal cancer and it is biologically active against some cisplatin-resistant tumor types (32). The mechanism of oxaliplatin-DNA adduct repair is slightly different from that of cisplatin-DNA repair. For example, although nucleotide excision repair (NER) cannot discriminate between oxaliplatin and cisplatin-DNA adducts, mismatch repair (MMR) does not recognize oxaliplatin-DNA cross-links (33-34). A number of proteins have been identified that bind to oxaliplatin-DNA adducts, but there is no relationship between PARP-1 and oxaliplatin-damaged

DNA. In the present work, we demonstrate that PARP-1 binds to a dsDNA containing a site-specific oxaliplatin 1,2-d(GpG) cross-link. Therefore, PARP-1 may also play a role in the recognition and processing of oxaliplatin-DNA adducts.

cDPCP, or pyriplatin, shows promising biological activity against colorectal cancer cells, blocks the transcription by RNA polymerase II, and can escape from DNA damage repair pathways (4-5). The X-ray structure of a cDPCP-DNA adduct revealed that the damage introduces substantially less distortion in the DNA duplex compared to a cDDP-DNA adduct (4). The pyridine moiety in cDPCP faces the 5'-end of the platinated strand, allowing formation of a hydrogen bond between the NH<sub>3</sub> ligand trans to pyridine and O6 of the guanosine residue. However, little is known about damage response proteins that might bind to a cDPCP-DNA lesion. Our results indicate that PARP-1 binds to a dsDNA damaged by cDPCP. Taken together with the fact that PARP-1 also binds to dsDNA damaged by other platinum drugs, especially one containing a cisplatin 1,2-d(GpG) cross-link, it is likely that the PARP-1 binds to the damage in a platinum-specific manner rather than recognizing a distortion in the DNA.

In conclusion, the in vitro PARP-1 binding assays have established the specific role of PARP-1 in platinum-DNA damage response. PARP-1 differentiates between normal and platinum-damaged DNA, and the protein has higher affinity for cisplatin 1,2-d(GpG) cross-links compared to other types of cisplatin-DNA cross-links. PARP-1 recognizes not only cisplatin lesions but also those of oxaliplatin and pyriplatin. Automodification of PARP-1 significantly attenuates its binding to the platinated DNA, and elimination of pADPr facilitates binding of the protein to the cisplatin-DNA cross-link. Our results further shed light on platinum-DNA damage recognition, with the implication that PARP-1 may shield the lesion from repair and trigger a cytotoxic response. Future studies on downstream effects that follow automodified PARP-1 binding to the platinum lesion will provide an even more detailed picture of the exact role of this protein as a platinum damage-response factor in the cell.

## ACKNOWLEDGMENT

This work was supported by grants from the Rita Allen Foundation and the Sidney Kimmel Foundation for Cancer Research to P.C. and from the National Cancer Institute (CA034992) to S.J.L. We thank the members of the Chang Lab for helpful discussions and reagents, and Sejal Vyas of the Chang lab and Dr. Nora Graf of the Lippard lab for critical reading and comments on the manuscript.

## SUPPORTING INFORMATION AVAILABLE

Autoradiograph of the 21-bp DNA duplexes (Figure S1), autoradiograph of the cDDP-ICL (Figure S2), and Western Blot analysis of overexpressed eGFP-PARP-1 binding to different DNA probes (Figure S3). This material is available for free of charge via the Internet at <http://pubs.acs.org>

## REFERENCES

1. Wang, D., and Lippard, S. J. (2005) Cellular processing of platinum anticancer drugs. *Nat. Rev. Drug Discov.* *4*, 307-320.
2. Jamieson, E. R., and Lippard, S. J. (1999) Structure, Recognition, and Processing of Cisplatin-DNA Adducts. *Chem. Rev.* *99*, 2467-2498.
3. Jung, Y., and Lippard, S. J. (2007) Direct cellular responses to platinum-induced DNA damage. *Chem. Rev.* *107*, 1387-1407.
4. Lovejoy, K. S., Todd, R. C., Zhang, S., McCormick, M. S., D'Aquino, J. A., Reardon, J. T., Sancar, A., Giacomini, K. M., and Lippard, S. J. (2008) *cis*-Diammine(pyridine)chloroplatinum(II), a monofunctional platinum(II) antitumor agent: Uptake, structure, function, and prospects. *Proc. Natl. Acad. Sci. U.S.A.* *105*, 8902-8907.

5. Wang, D., Zhu, G., Huang, X., and Lippard, S. J. (2010) X-ray structure and mechanism of RNA polymerase II stalled at an antineoplastic monofunctional platinum-DNA adduct. *Proc. Natl. Acad. Sci. U.S.A.* in press.
6. Yamanaka, H., Penning, C. A., Willis, E. H., Wasson, D. B., and Carson, D. A. (1988) Characterization of human poly(ADP-ribose) polymerase with autoantibodies. *J. Biol. Chem.* 263, 3879-3883.
7. Woodhouse, B. C., and Dianov, G. L. (2008) Poly ADP-ribose polymerase-1: an international molecule of mystery. *DNA Repair (Amst)* 7, 1077-1086.
8. Malanga, M., and Althaus, F. R. (2005) The role of poly(ADP-ribose) in the DNA damage signaling network. *Biochem. Cell Biol.* 83, 354-364.
9. Schreiber, V., Dantzer, F., Amé, J. C., and de Murcia, G. (2006) Poly(ADP-ribose): novel functions for an old molecule. *Nat. Rev. Mol. Cell Biol.* 7, 517-528.
10. Bouchard, V. J., Rouleau, M., and Poirier, G. G. (2003) PARP-1, a determinant of cell survival in response to DNA damage. *Exp. Hematol.* 31, 446-454.
11. Drew, Y., and Plummer, R. (2009) PARP inhibitors in cancer therapy: two modes of attack on the cancer cell widening the clinical applications. *Drug Resist. Updates* 12, 153-156.
12. Chalmers, A. J. (2009) The potential role and application of PARP inhibitors in cancer treatment. *Br. Med. Bull.* 89, 23-40.
13. Jagtap, P., and Szabó, C. (2005) Poly(ADP-ribose) polymerase and the therapeutic effects of its inhibitors. *Nat. Rev. Drug Discov.* 4, 421-440.
14. Evers, B., Drost, R., Schut, E., de Bruin, M., van der Burg, E., Derksen, P. W., Holstege, H., Liu, X., van Drunen, E., Beverloo, H. B., Smith, G. C. M., Martin, N. M. B., Lau, A., O'Connor, M. J., and Jonkers, J. (2008) Selective inhibition of BRCA2-deficient mammary tumor cell growth by AZD2281 and cisplatin. *Clin. Cancer Res.* 14, 3916-3925.
15. Zhang, C. X., Chang, P. V., and Lippard, S. J. (2004) Identification of nuclear proteins that interact with platinum-modified DNA by photoaffinity labeling. *J. Am. Chem. Soc.* 126, 6536-6537.



16. Guggenheim, E. R., Xu, D., Zhang, C. X., Chang, P. V., and Lippard, S. J. (2009) Photoaffinity isolation and identification of proteins in cancer cell extracts that bind to platinum-modified DNA. *ChemBioChem* 10, 141-157.
17. Zhu, G., and Lippard, S. J. (2009) Photoaffinity labeling reveals nuclear proteins that uniquely recognize cisplatin-DNA interstrand cross-links. *Biochemistry* 48, 4916-4925.
18. Guggenheim, E. R., Ondrus, A. E., Movassaghi, M., and Lippard, S. J. (2008) Poly(ADP-ribose) polymerase-1 activity facilitates the dissociation of nuclear proteins from platinum-modified DNA. *Bioorg. Med. Chem.* 16, 10121-10128.
19. Mikata, Y., He, Q., and Lippard, S. J. (2001) Laser-induced photo-cross-linking of cisplatin-modified DNA to HMG-domain proteins. *Biochemistry* 40, 7533-7541.
20. Chang, P., Coughlin, M., and Mitchison, T. J. (2009) Interaction between Poly(ADP-ribose) and NuMA contributes to mitotic spindle pole assembly. *Mol. Biol. Cell* 20, 4575-4585.
21. Muñoz-Gámez, J. A., Martín-Oliva, D., Aguilar-Quesada, R., Cañuelo, A., Nuñez, M. I., Valenzuela, M. T., Ruiz de Almodóvar, J. M., De Murcia, G., and Oliver, F. J. (2005) PARP inhibition sensitizes p53-deficient breast cancer cells to doxorubicin-induced apoptosis. *Biochem. J.* 386, 119-125.
22. Slama, J. T., Aboul-Ela, N., Goli, D. M., Cheesman, B. V., Simmons, A. M., and Jacobson, M. K. (1995) Specific inhibition of poly(ADP-ribose) glycohydrolase by adenosine diphosphate (hydroxymethyl)pyrrolidinediol. *J. Med. Chem.* 38, 389-393.
23. Oka, S., Kato, J., and Moss, J. (2006) Identification and characterization of a mammalian 39-kDa poly(ADP-ribose) glycohydrolase. *J. Biol. Chem.* 281, 705-713.
24. Kraus, W. L. (2008) Transcriptional control by PARP-1: chromatin modulation, enhancer-binding, coregulation, and insulation. *Curr. Opin. Cell Biol.* 20, 294-302.
25. Zorbas, H., and Keppler, B. K. (2005) Cisplatin damage: are DNA repair proteins saviors or traitors to the cell? *ChemBioChem* 6, 1157-1166.

26. Huang, K., Tidyman, W. E., Le, K. U., Kirsten, E., Kun, E., and Ordahl, C. P. (2004) Analysis of nucleotide sequence-dependent DNA binding of poly(ADP-ribose) polymerase in a purified system. *Biochemistry* 43, 217-223.
27. Lilyestrom, W., van der Woerd, M. J., Clark, N., and Luger, K. (2010) Structural and Biophysical Studies of Human PARP-1 in Complex with Damaged DNA. *J. Mol. Biol.* 395, 983-994.
28. Jorgensen, T. J., Chen, K., Chasovskikh, S., Roy, R., Dritschilo, A., and Üren, A. (2009) Binding kinetics and activity of human poly(ADP-ribose) polymerase-1 on oligodeoxyribonucleotide substrates. *J. Mol. Recognit.* 22, 446-452.
29. Galande, S., and Kohwi-Shigematsu, T. (1999) Poly(ADP-ribose) polymerase and Ku autoantigen form a complex and synergistically bind to matrix attachment sequences. *J. Biol. Chem.* 274, 20521-20528.
30. Sastry, S. S., and Kun, E. (1990) The interaction of adenosine diphosphoribosyl transferase (ADPRT) with a cruciform DNA. *Biochem. Biophys. Res. Commun.* 167, 842-847.
31. Kun, E., Kirsten, E., and Ordahl, C. P. (2002) Coenzymatic activity of randomly broken or intact double-stranded DNAs in auto and histone H<sub>1</sub> trans-poly(ADP-ribosylation), catalyzed by poly(ADP-ribose) polymerase (PARP I). *J. Biol. Chem.* 277, 39066-39069.
32. Raymond, E., Faivre, S., Chaney, S., Woynarowski, J., and Cvitkovic, E. (2002) Cellular and molecular pharmacology of oxaliplatin. *Mol. Cancer. Ther.* 1, 227-235.
33. Reardon, J. T., Vaisman, A., Chaney, S. G., and Sancar, A. (1999) Efficient nucleotide excision repair of cisplatin, oxaliplatin, and Bis-aceto-ammine-dichloro-cyclohexylamine-platinum(IV) (JM216) platinum intrastrand DNA diadducts. *Cancer Res.* 59, 3968-3971.
34. Fink, D., Nebel, S., Aebi, S., Zheng, H., Cenni, B., Nehmé, A., Christen, R. D., and Howell, S. B. (1996) The role of DNA mismatch repair in platinum drug resistance. *Cancer Res.* 56, 4881-4886.

## FIGURE CAPTIONS

Figure 1: Chemical structure of platinum compounds: cisplatin, oxaliplatin and pyriplatin.

Figure 2: Sequences of the 21-bp duplexes containing site-specific platinum damage and biotin moiety.

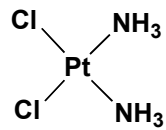
Figure 3: Western Blot analysis of endogenous PARP-1 binding to different DNA probes. (A) Binding of unactivated PARP-1 to cDDP-G\*G\* (lanes 1-3), cDDP-G\*TG\* (lanes 4-6), cDDP-ICL (lanes 7-9), and NoPt (lanes 10-12). (B) Binding of activated PARP-1 to cDDP-G\*G\* (lanes 1-3), cDDP-G\*TG\* (lanes 4-6), cDDP-ICL (lanes 7-9), and NoPt (lanes 10-12). A 45  $\mu$ L quantity of CFE was used in all lanes. The samples were resolved on 8% SDS-PAGE and detected using a PARP-1 antibody.

Figure 4: Western Blot analysis of endogenous PARP-1 binding to cDDP-G\*G\* (A) and NoPt (B). The samples were resolved on 8% SDS-PAGE and detected using a PARP-1 antibody. Amount of CFE used: Lanes 1, 4, 7 and 10 in both (A) and (B), 60  $\mu$ L; Lanes 2, 5, 8 and 11 in both (A) and (B), 15  $\mu$ L; Lanes 3, 6, 9 and 12 in both (A) and (B), 5  $\mu$ L; (C) Quantification of the gels. Lanes: a, unactivated PARP-1 binding to cDDP-G\*G\* (Lane 2 in Figure 4A); b, activated PARP-1 binding to cDDP-G\*G\* (Lane 8 in Figure 4A); c, unactivated PARP-1 binding to NoPt (Lane 2 in Figure 4B); d, activated PARP-1 binding to NoPt (Lane 8 in Figure 4B).

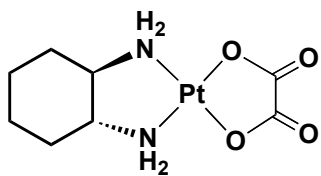
Figure 5: Western Blot analysis of endogenous PARP-1 binding to different platinum-DNA damages. (A) Binding of unactivated PARP-1 to cDDP-G\*G\* (lanes 1-3), PtDACH-G\*TG\* (lanes 4-6) and cDPCP-G\* (lanes 7-9). Amount of CFE used: Lanes 1, 4, and 7, 5  $\mu$ L; Lanes 2, 5, and 8, 2  $\mu$ L; Lanes 3, 6, and 9, 1  $\mu$ L. (B) Binding of activated PARP-1 to cDDP-G\*G\* (lane 1), PtDACH-G\*TG\* (lane 2), cDPCP-G\* (lane 3) and NoPt (lane 4). A 5  $\mu$ L quantity of CFE was used. The samples were resolved on 8% SDS-PAGE and detected by a PARP-1 antibody.

Figure 6: Western Blot analysis of PARP-1 binding to cDDP-G\*G\*. A 5  $\mu$ L quantity of CFE was used. The samples were resolved on 8% SDS-PAGE and detected by a PARP-1 antibody.

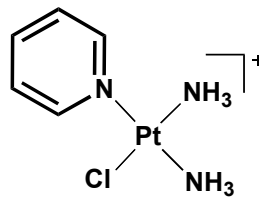
**Figure 1**



**Cisplatin**

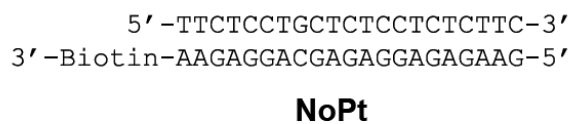
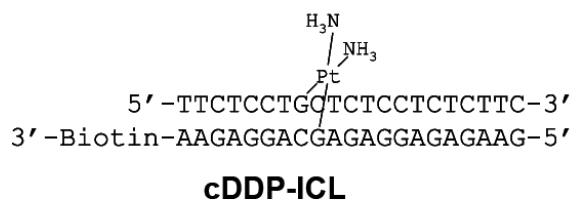
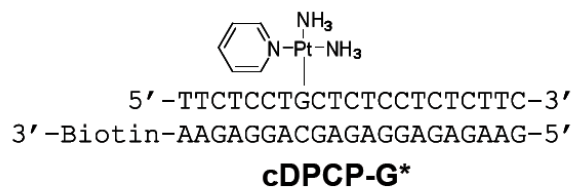
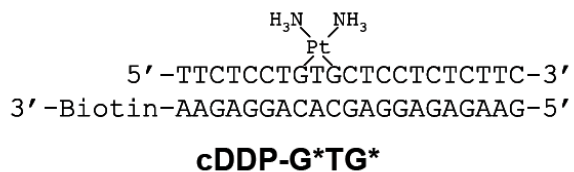
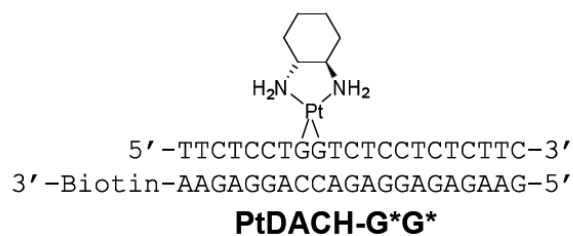
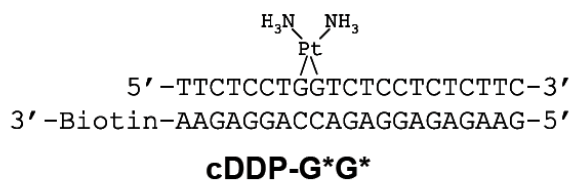


**Oxaliplatin**



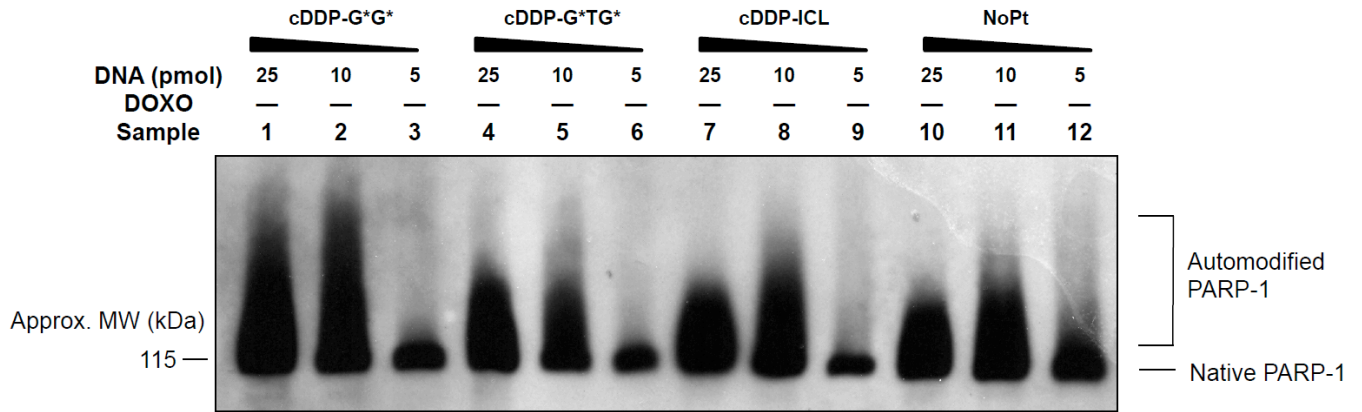
**Pyriplatin**

**Figure 2**

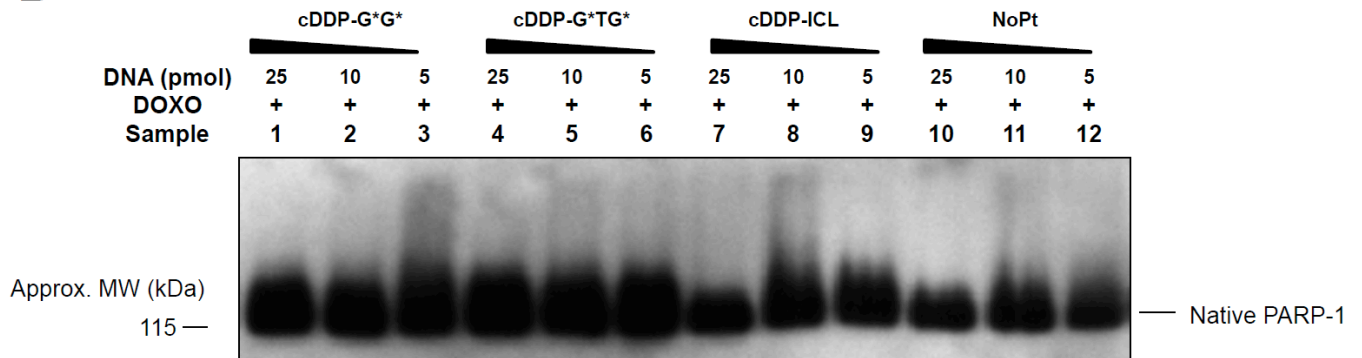


**Figure 3**

**A**

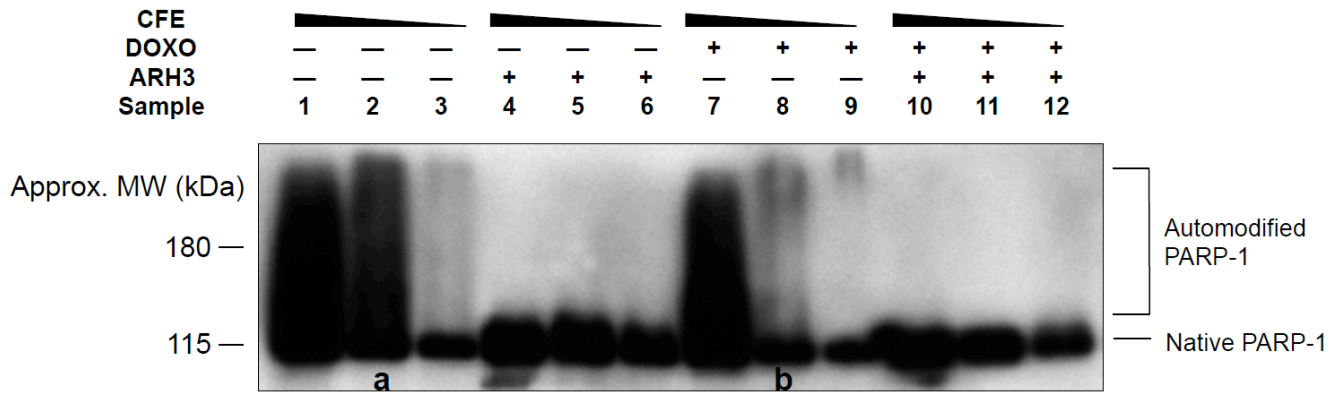


**B**

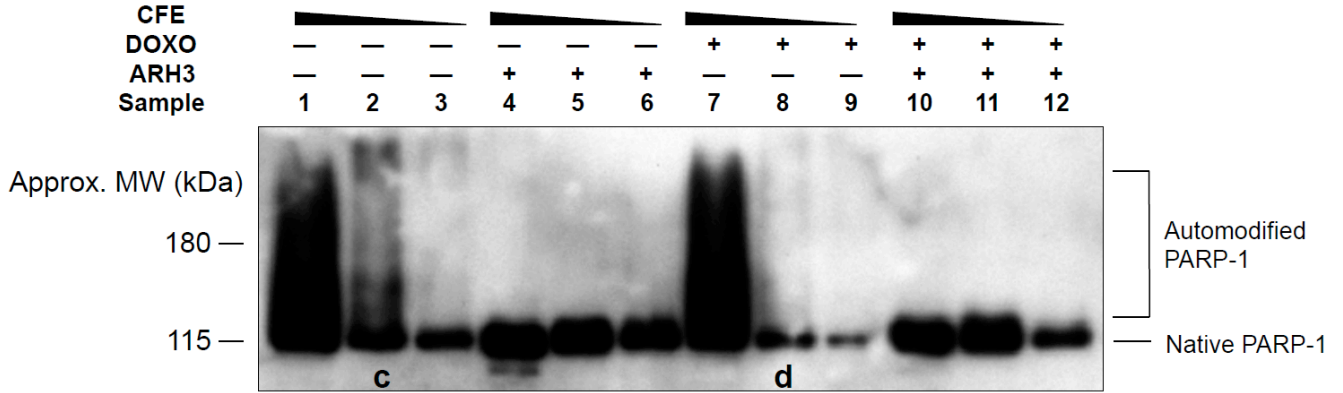


**Figure 4**

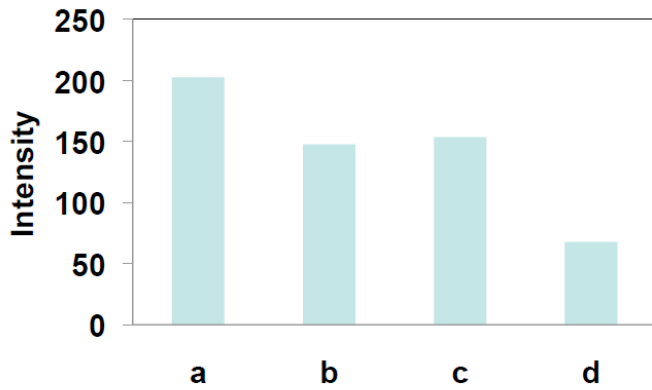
**A**



**B**

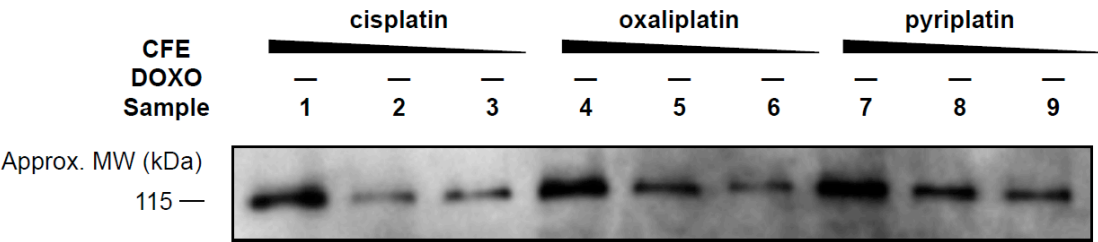


**C**

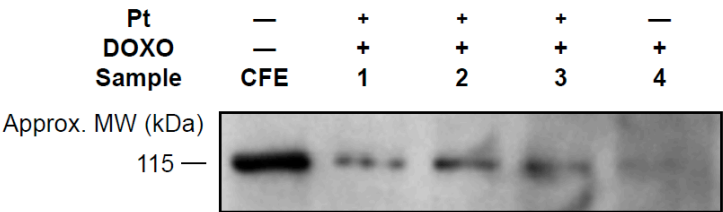


**Figure 5**

**A**



**B**



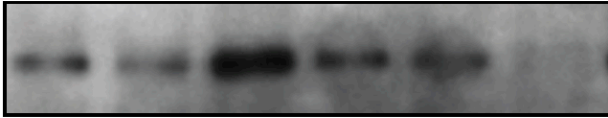


**Figure 6**

<b>DOXO</b>	—	+	—	+	—	+
<b>Pretreated ARH3</b>	—	—	+	+	—	—
<b>Pretreated NAD<sup>+</sup></b>	—	—	—	—	+	+
<b>Sample</b>	<b>1</b>	<b>2</b>	<b>3</b>	<b>4</b>	<b>5</b>	<b>6</b>

Approx. MW (kDa)

115 —



# Recognition of Platinum-DNA Damage by Poly(ADP-Ribose) Polymerase-1

Guangyu Zhu, Paul Chang and Stephen J. Lippard

