

FORM PROJECTION

EXPLORATION OF HABITABLE FIELD

by

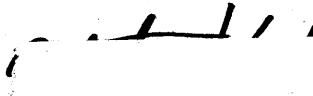
MOTOO KUBO
B.A., Nihon University
(1967)


SUBMITTED IN
PARTIAL FULFILLMENT
OF THE REQUIREMENTS FOR THE
DEGREE OF BACHELOR OF ARCHITECTURE


at the

MASSACHUSETTS INSTITUTE OF
TECHNOLOGY

June, 1971 (i.e. Feb. 1972)

Signature of Author 
Department of Architecture, June 7, 1971

Certified by 
Thesis Supervisor

Accepted by 
Chairman
Departmental Committee on Graduate Students

Rotch



CONTENTS

a-j: The original references

(specific and clear enough to generate a complex set of organizations, elements and relationships) for exploring some full range of open-continuous habitable forms by improving
adding
changing scale
direction
dimension
material
colour
etc..

The emphasis is not on abstracting
isolating
creating a single object,

but (by reference to some small piece of what is real existing), to get at the larger context through an additive method of working
seeing
making
building.

1,2. Drawing of built edge of the original plan.

3. Top: elevation of 2.

Bottom: elevation of field generated by displacing vertically and horizontally, the dimensions of above elevation and changing scale. The intention is to explore the relationship between scale/dimension changes and form families.

4. Partial definition of small use space by changing scale of a part of drawing 2.

CONTENTS

5. A distribution of large levels based on a scale change of drawing 4, which could be used as a reference for further building.

6. Darker part: plan of Drawing 5.

7. Example of a ground form possibility suggested by the original plan.

8,9,10,11,12.

Possible distribution of inside space in section illustrating an inside/outside edge. These could be sections through whole field of drawing 5.

13. Drawing illustrating building methods

I. Blue: Largest partial definition of cast-in-place concrete establishes landscape and major direction (floor span is variable).

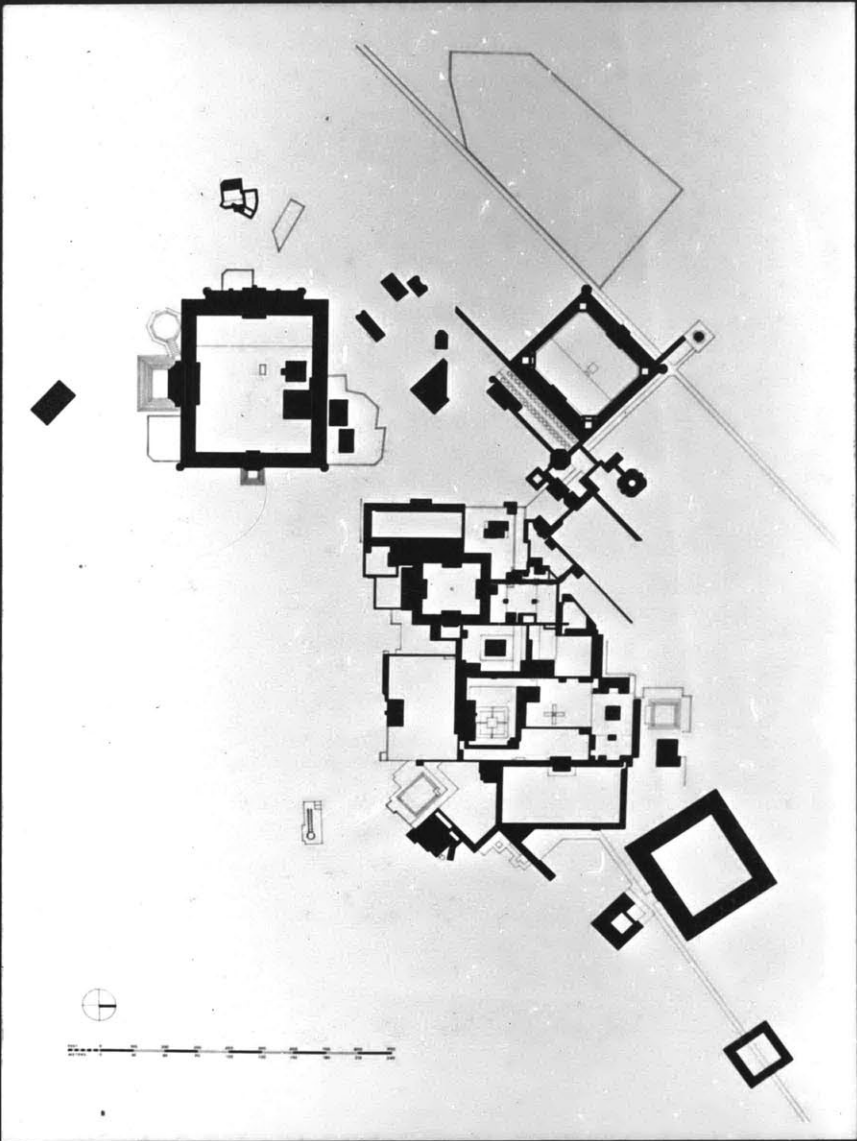
II. Green: Precast concrete parts.

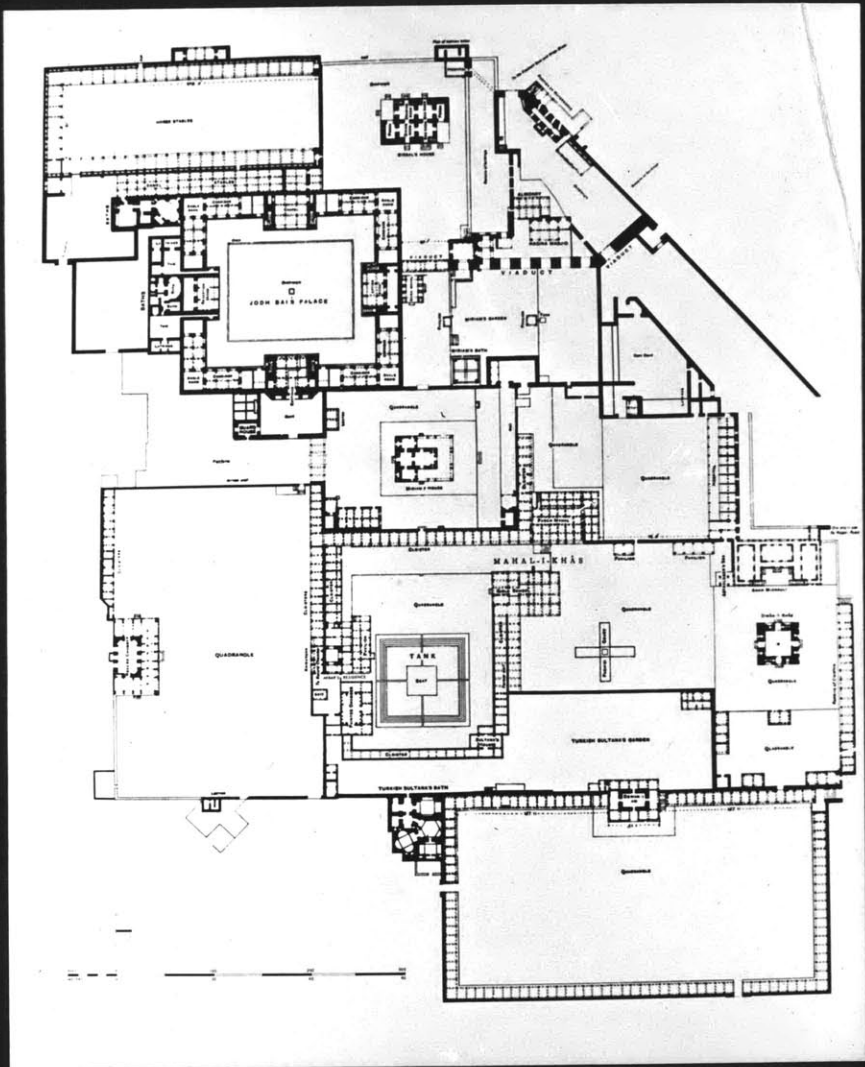
III. Yellow: Small parts linear
planar
3D defining various enclosures.

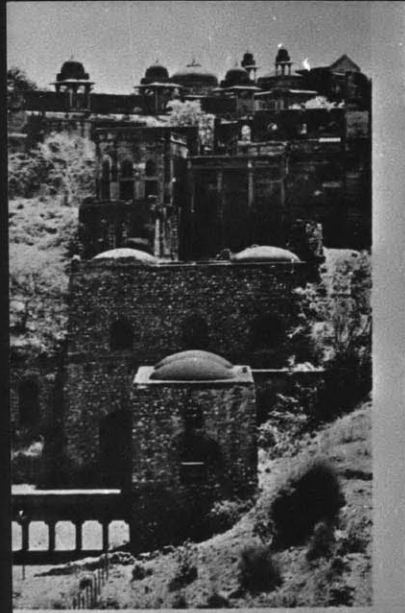
14. Possible plan of the field derived from the Section 13.

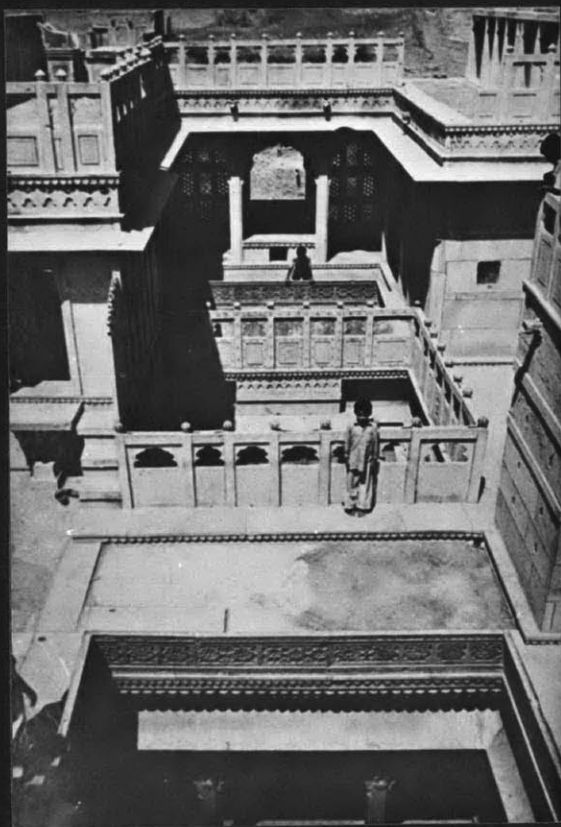
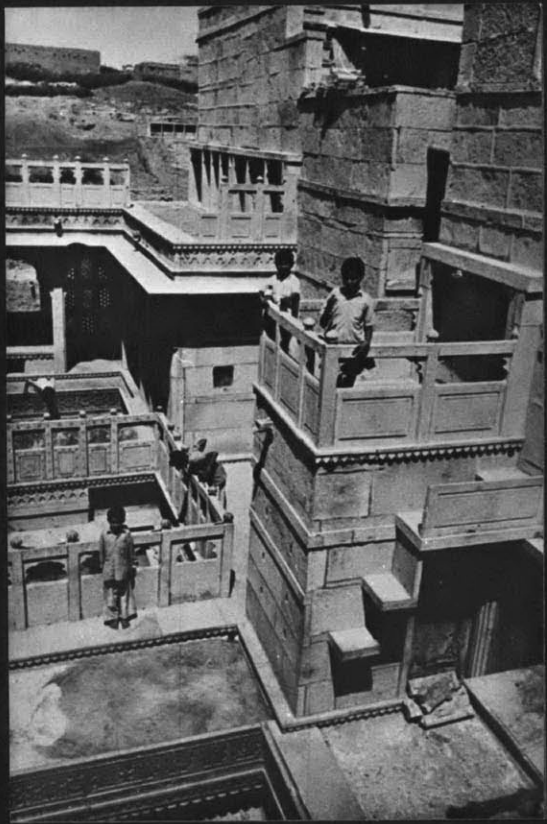
15, 16, 17

Same as above showing private use area/public access (dark blue) relationship.





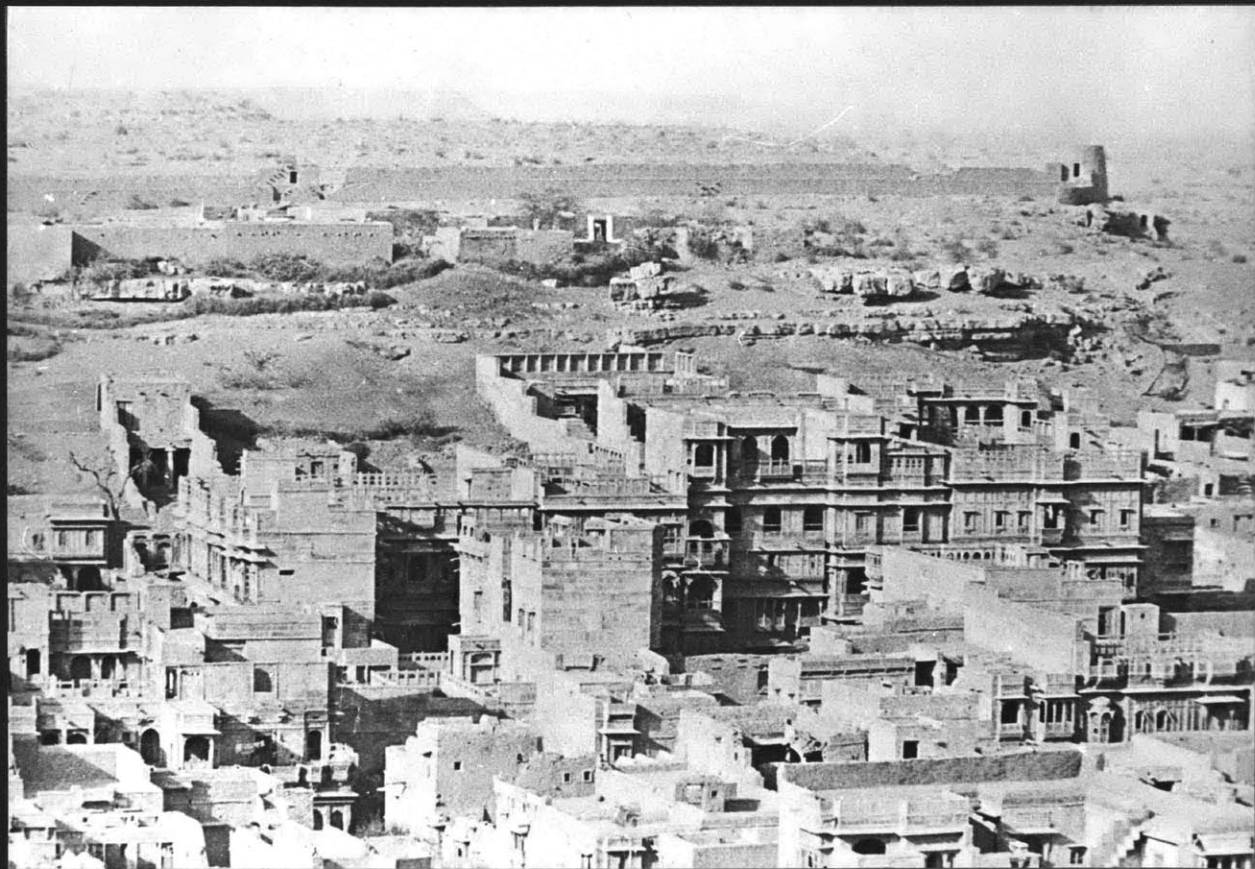


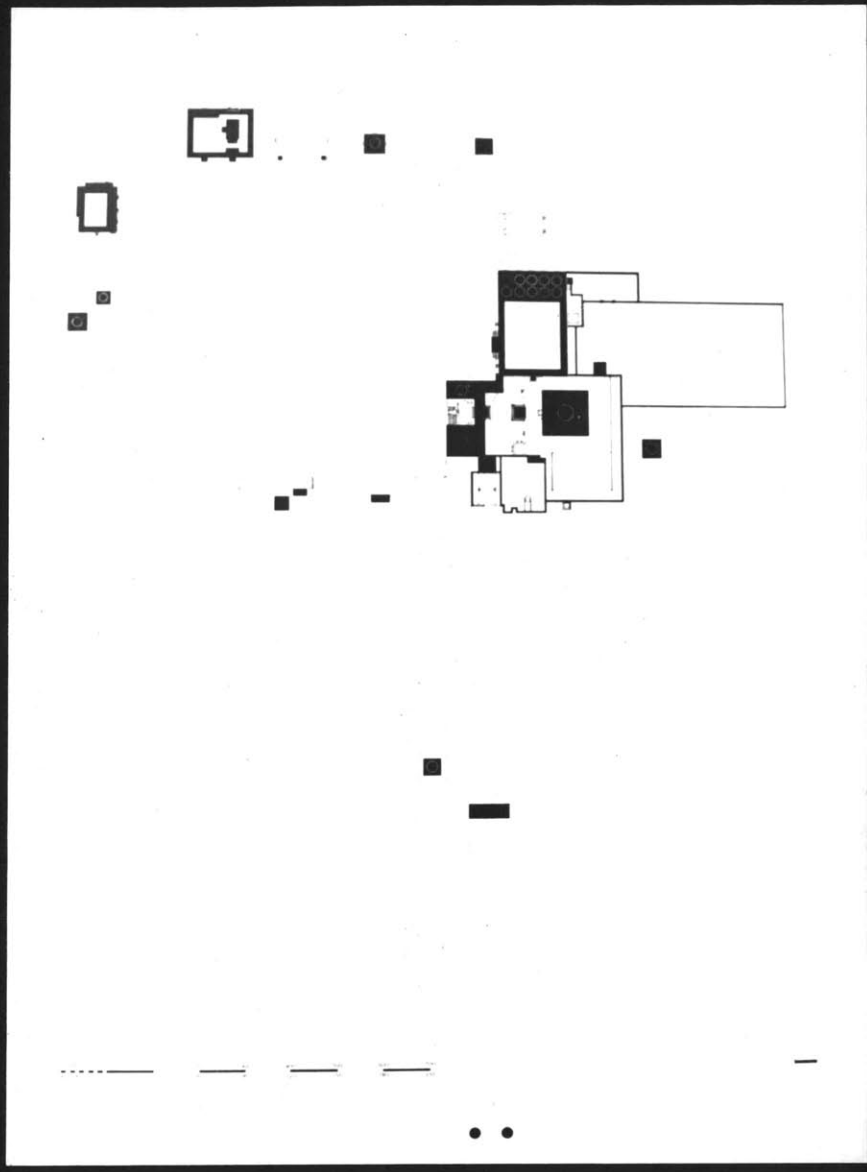


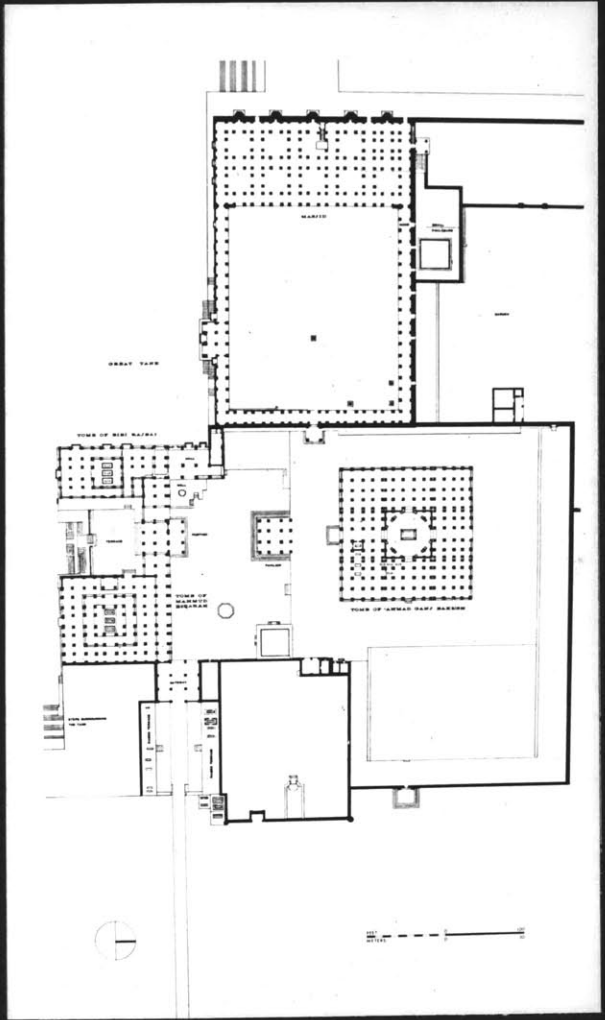


12

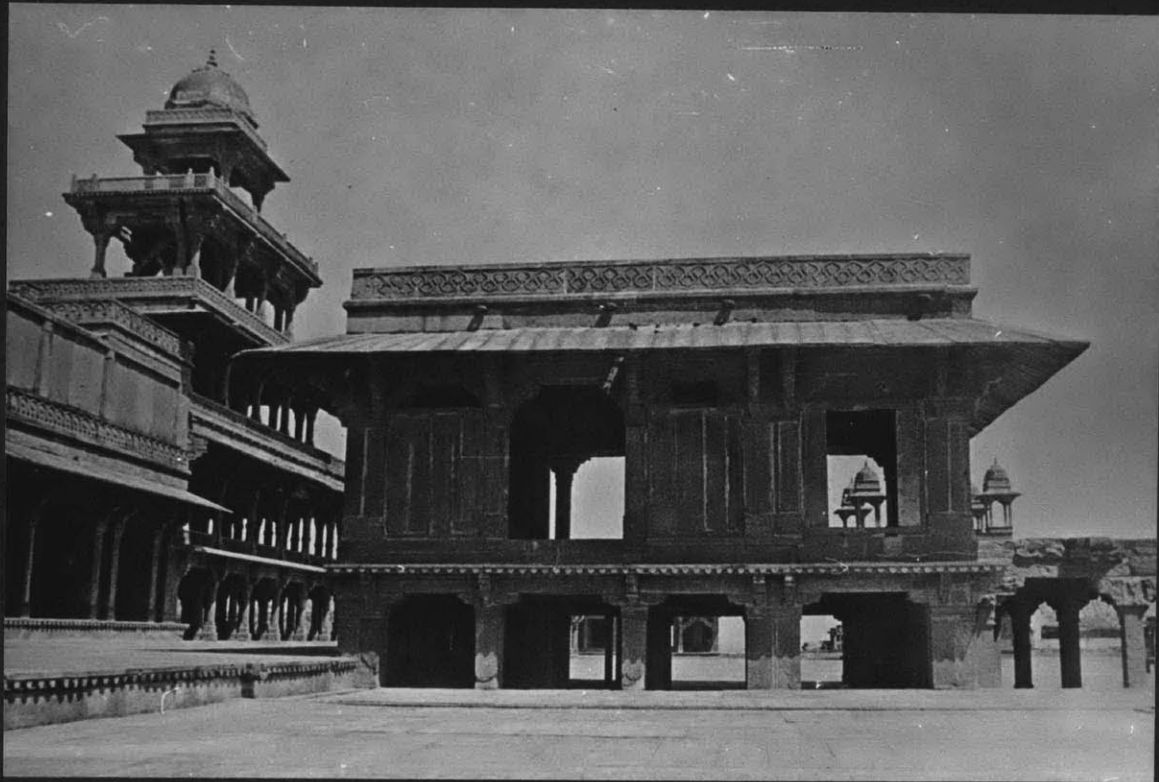




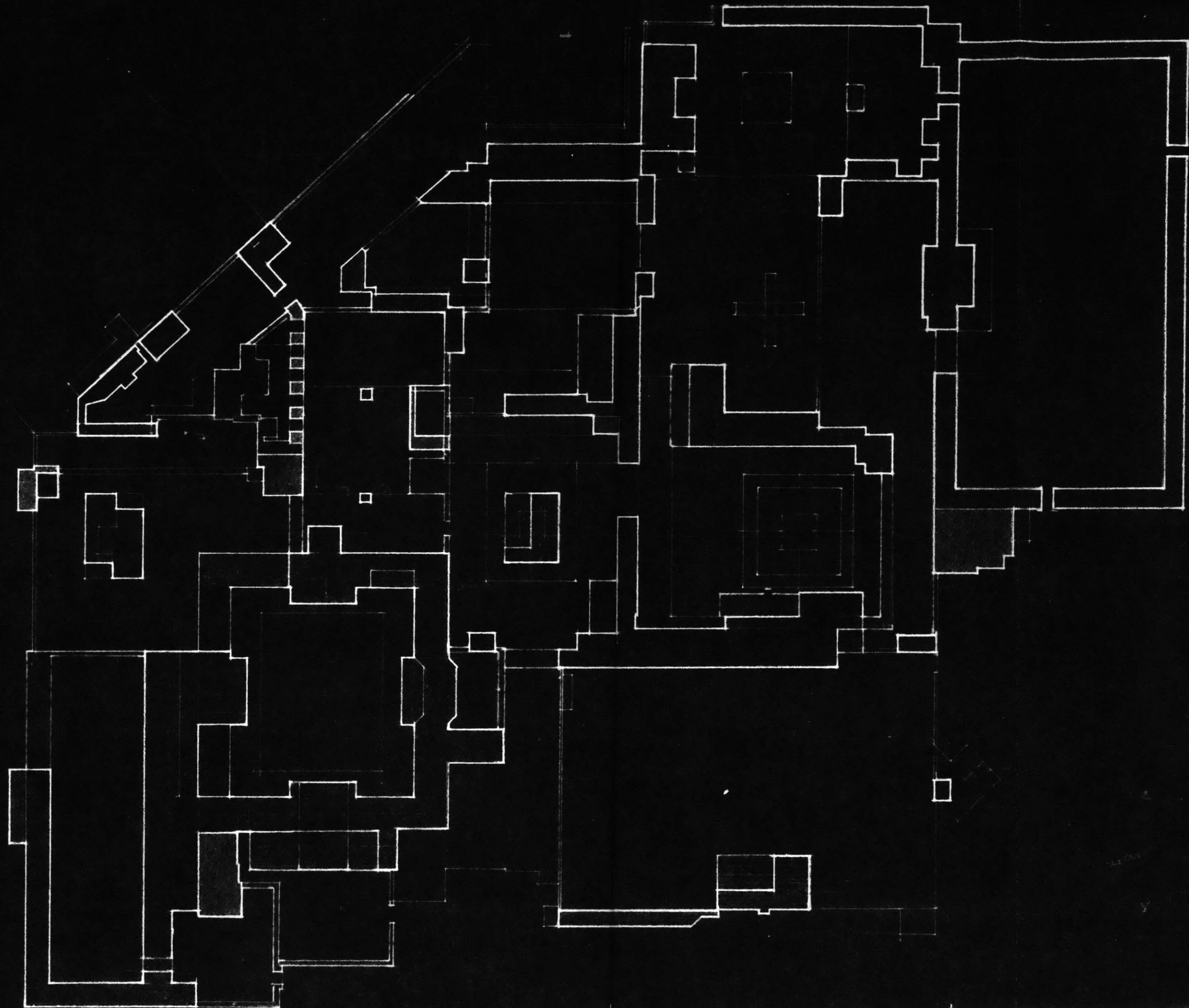


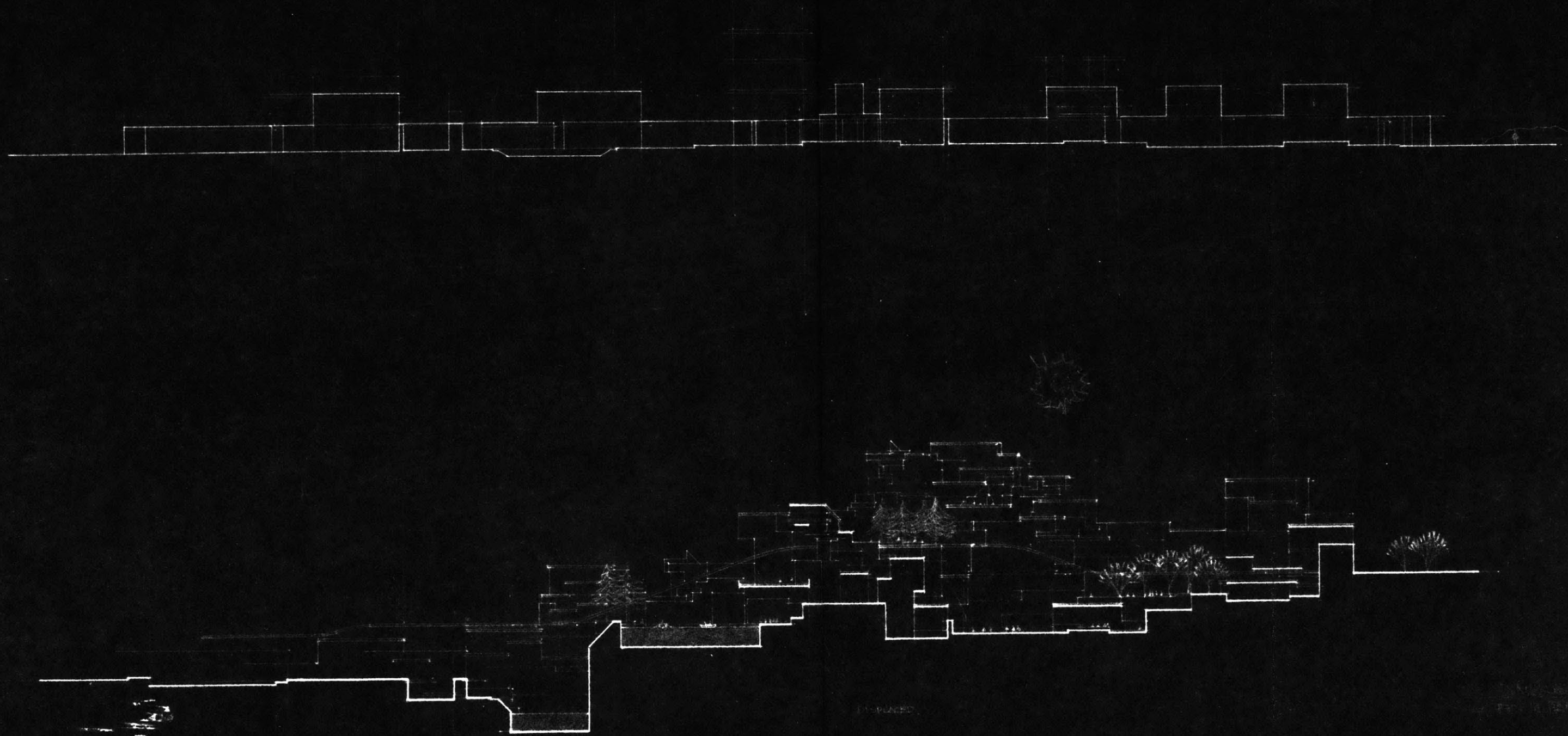






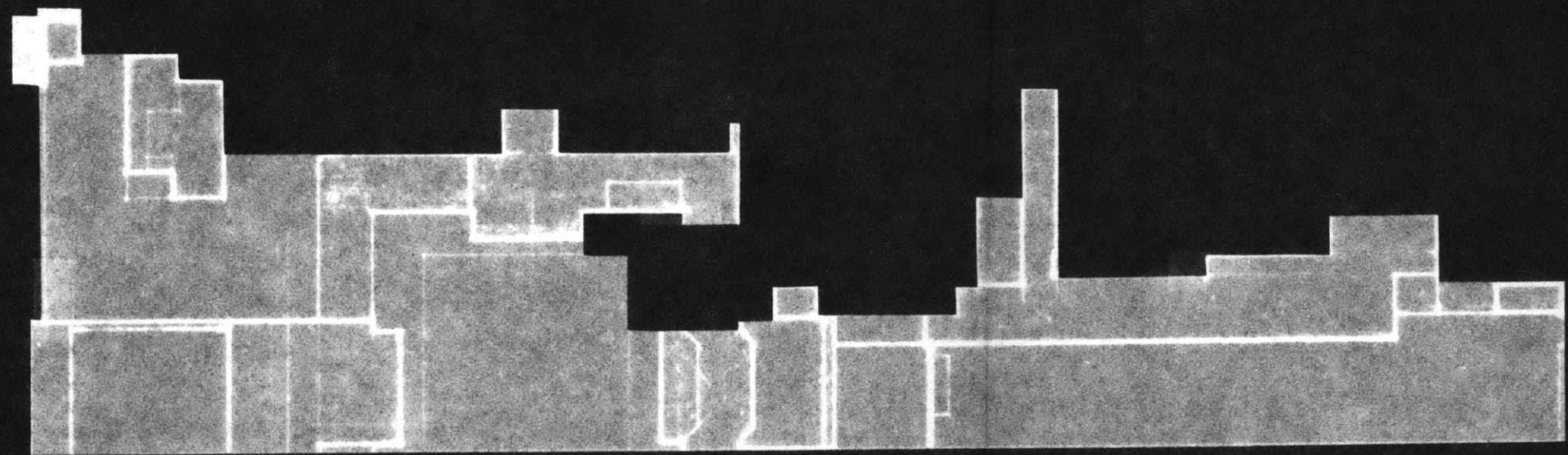


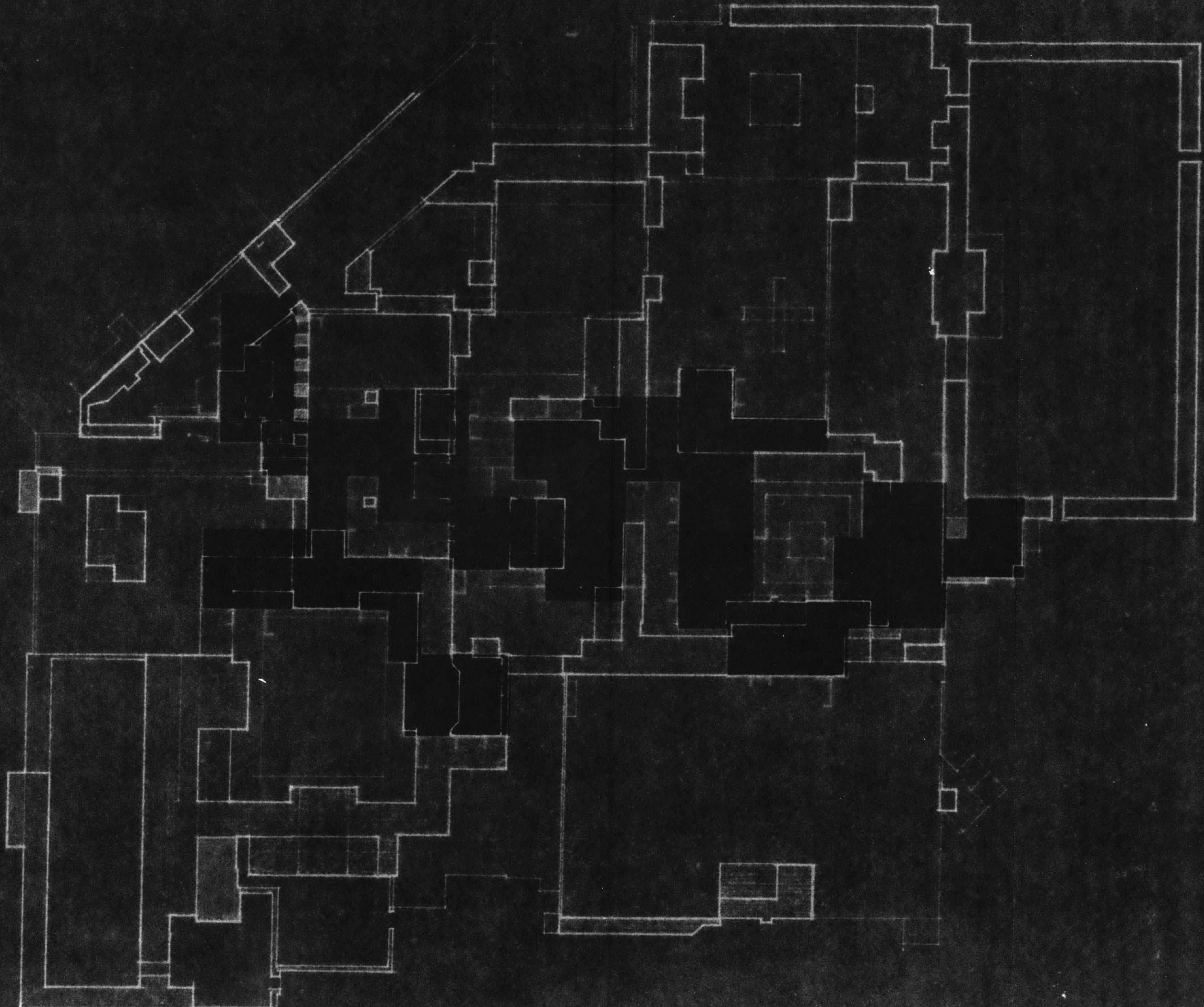


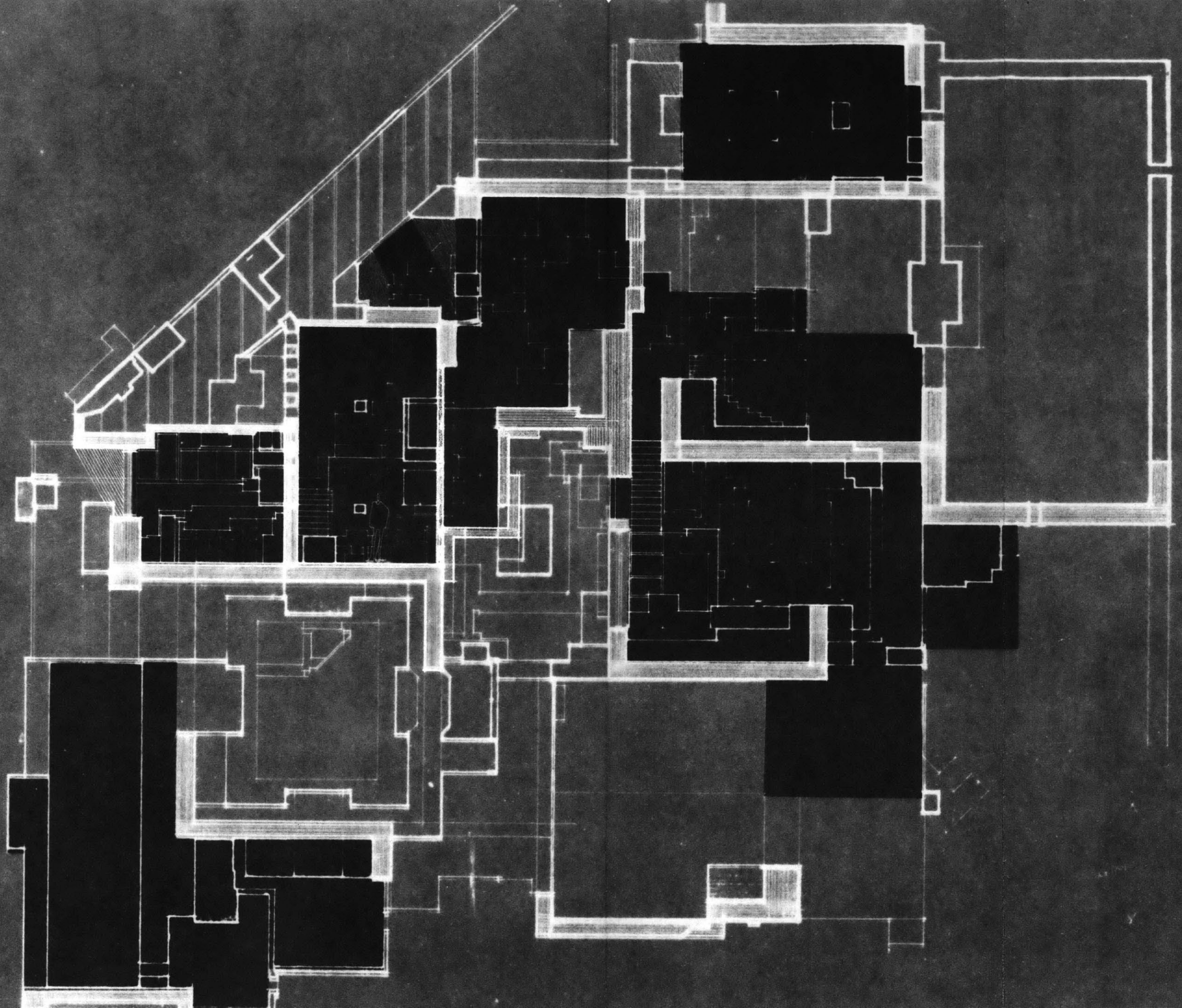












Scale
1/2"

