

MIT Open Access Articles

Learning Deep Features for Discriminative Localization

The MIT Faculty has made this article openly available. **Please share** how this access benefits you. Your story matters.

Citation: Zhou, Bolei, et al. "Learning Deep Features for Discriminative Localization." 2016 IEEE Conference on Computer Vision and Pattern Recognition (CVPR), 27-30 June, 2016, Las Vegas, NV, IEEE, 2016, pp. 2921–29.

As Published: <http://dx.doi.org/10.1109/CVPR.2016.319>

Publisher: Institute of Electrical and Electronics Engineers (IEEE)

Persistent URL: <http://hdl.handle.net/1721.1/112986>

Version: Original manuscript: author's manuscript prior to formal peer review

Terms of use: Creative Commons Attribution-Noncommercial-Share Alike



Learning Deep Features for Discriminative Localization

Bolei Zhou, Aditya Khosla, Agata Lapedriza, Aude Oliva, Antonio Torralba
Computer Science and Artificial Intelligence Laboratory, MIT
{bzhou, khosla, agata, oliva, torralba}@csail.mit.edu

Abstract

In this work, we revisit the global average pooling layer proposed in [13], and shed light on how it explicitly enables the convolutional neural network to have remarkable localization ability despite being trained on image-level labels. While this technique was previously proposed as a means for regularizing training, we find that it actually builds a generic localizable deep representation that can be applied to a variety of tasks. Despite the apparent simplicity of global average pooling, we are able to achieve 37.1% top-5 error for object localization on ILSVRC 2014, which is remarkably close to the 34.2% top-5 error achieved by a fully supervised CNN approach. We demonstrate that our network is able to localize the discriminative image regions on a variety of tasks despite not being trained for them.

1. Introduction

Recent work by Zhou *et al* [33] has shown that the convolutional units of various layers of convolutional neural networks (CNNs) actually behave as object detectors despite no supervision on the location of the object was provided. Despite having this remarkable ability to localize objects in the convolutional layers, this ability is lost when fully-connected layers are used for classification. Recently some popular fully-convolutional neural networks such as the Network in Network (NIN) [13] and GoogLeNet [24] have been proposed to avoid the use of fully-connected layers to minimize the number of parameters while maintaining high performance.

In order to achieve this, [13] uses *global average pooling* which acts as a structural regularizer, preventing overfitting during training. In our experiments, we found that the advantages of this global average pooling layer extend beyond simply acting as a regularizer - In fact, with a little tweaking, the network can retain its remarkable localization ability until the final layer. This tweaking allows identifying easily the discriminative image regions in a single forward-pass for a wide variety of tasks, even those that the network was not originally trained for. As shown in Figure 1(a), a



Figure 1. A simple modification of the global average pooling layer combined with our class activation mapping (CAM) technique allows the classification-trained CNN to both classify the image and localize class-specific image regions in a single forward-pass e.g., the toothbrush for *brushing teeth* and the chainsaw for *cutting trees*.

CNN trained on object categorization is successfully able to localize the discriminative regions for action classification as the objects that the humans are interacting with rather than the humans themselves.

Despite the apparent simplicity of our approach, for the weakly supervised object localization on ILSVRC benchmark [20], our best network achieves 37.1% top-5 test error, which is rather close to the 34.2% top-5 test error achieved by fully supervised AlexNet [10]. Furthermore, we demonstrate that the localizability of the deep features in our approach can be easily transferred to other recognition datasets for generic classification, localization, and concept discovery.¹

1.1. Related Work

Convolutional Neural Networks (CNNs) have led to impressive performance on a variety of visual recognition tasks [10, 34, 8]. Recent work has shown that despite being trained on image-level labels, CNNs have the remarkable ability to localize objects [1, 16, 2, 15]. In this work, we show that, using the right architecture, we can generalize this ability beyond just localizing objects, to start identifying exactly which regions of an image are being used for

¹Our models are available at: <http://cnnlocalization.csail.mit.edu>

discrimination. Here, we discuss the two lines of work most related to this paper: weakly-supervised object localization and visualizing the internal representation of CNNs.

Weakly-supervised object localization: There have been a number of recent works exploring weakly-supervised object localization using CNNs [1, 16, 2, 15]. Bergamo *et al* [1] propose a technique for self-taught object localization involving masking out image regions to identify the regions causing the maximal activations in order to localize objects. Cinbis *et al* [2] combine multiple-instance learning with CNN features to localize objects. Oquab *et al* [15] propose a method for transferring mid-level image representations and show that some object localization can be achieved by evaluating the output of CNNs on multiple overlapping patches. However, the authors do not actually evaluate the localization ability. On the other hand, while these approaches yield promising results, they are not trained end-to-end and require multiple forward passes of a network to localize objects, making them difficult to scale to real-world datasets. Our approach is trained end-to-end and can localize objects in a single forward pass.

The most similar approach to ours is the work based on global max pooling by Oquab *et al* [16]. Instead of global average pooling, they apply global max pooling to localize a point on objects. However, their localization is limited to a point lying in the boundary of the object rather than determining the full extent of the object. We believe that while the *max* and *average* functions are rather similar, the use of average pooling encourages the network to identify the complete extent of the object. The basic intuition behind this is that the loss for average pooling benefits when the network identifies *all* discriminative regions of an object as compared to max pooling. This is explained in greater detail and verified experimentally in Sec. 3.2. Furthermore, unlike [16], we demonstrate that this localization ability is generic and can be observed even for problems that the network was not trained on.

We use *class activation map* to refer to the weighted activation maps generated for each image, as described in Section 2. We would like to emphasize that while global average pooling is not a novel technique that we propose here, the observation that it can be applied for accurate discriminative localization is, to the best of our knowledge, unique to our work. We believe that the simplicity of this technique makes it portable and can be applied to a variety of computer vision tasks for fast and accurate localization.

Visualizing CNNs: There has been a number of recent works [29, 14, 4, 33] that visualize the internal representation learned by CNNs in an attempt to better understand their properties. Zeiler *et al* [29] use deconvolutional networks to visualize what patterns activate each unit. Zhou *et al*. [33] show that CNNs learn object detectors while being trained to recognize scenes, and demonstrate that the same

network can perform both scene recognition and object localization in a single forward-pass. Both of these works only analyze the convolutional layers, ignoring the fully-connected thereby painting an incomplete picture of the full story. By removing the fully-connected layers and retaining most of the performance, we are able to understand our network from the beginning to the end.

Mahendran *et al* [14] and Dosovitskiy *et al* [4] analyze the visual encoding of CNNs by inverting deep features at different layers. While these approaches can invert the fully-connected layers, they only show what information is being preserved in the deep features without highlighting the relative importance of this information. Unlike [14] and [4], our approach can highlight exactly which regions of an image are important for discrimination. Overall, our approach provides another glimpse into the soul of CNNs.

2. Class Activation Mapping

In this section, we describe the procedure for generating *class activation maps* (CAM) using global average pooling (GAP) in CNNs. A class activation map for a particular category indicates the discriminative image regions used by the CNN to identify that category (e.g., Fig. 3). The procedure for generating these maps is illustrated in Fig. 2.

We use a network architecture similar to Network in Network [13] and GoogLeNet [24] - the network largely consists of convolutional layers, and just before the final output layer (softmax in the case of categorization), we perform global average pooling on the convolutional feature maps and use those as features for a fully-connected layer that produces the desired output (categorical or otherwise). Given this simple connectivity structure, we can identify the importance of the image regions by projecting back the weights of the output layer on to the convolutional feature maps, a technique we call class activation mapping.

As illustrated in Fig. 2, global average pooling outputs the spatial average of the feature map of each unit at the last convolutional layer. A weighted sum of these values is used to generate the final output. Similarly, we compute a weighted sum of the feature maps of the last convolutional layer to obtain our class activation maps. We describe this more formally below for the case of softmax. The same technique can be applied to regression and other losses.

For a given image, let $f_k(x, y)$ represent the activation of unit k in the last convolutional layer at spatial location (x, y) . Then, for unit k , the result of performing global average pooling, F^k is $\sum_{x,y} f_k(x, y)$. Thus, for a given class c , the input to the softmax, S_c , is $\sum_k w_k^c F_k$ where w_k^c is the weight corresponding to class c for unit k . Essentially, w_k^c indicates the *importance* of F_k for class c . Finally the output of the softmax for class c , P_c is given by $\frac{\exp(S_c)}{\sum_c \exp(S_c)}$. Here we ignore the bias term: we explicitly set the input

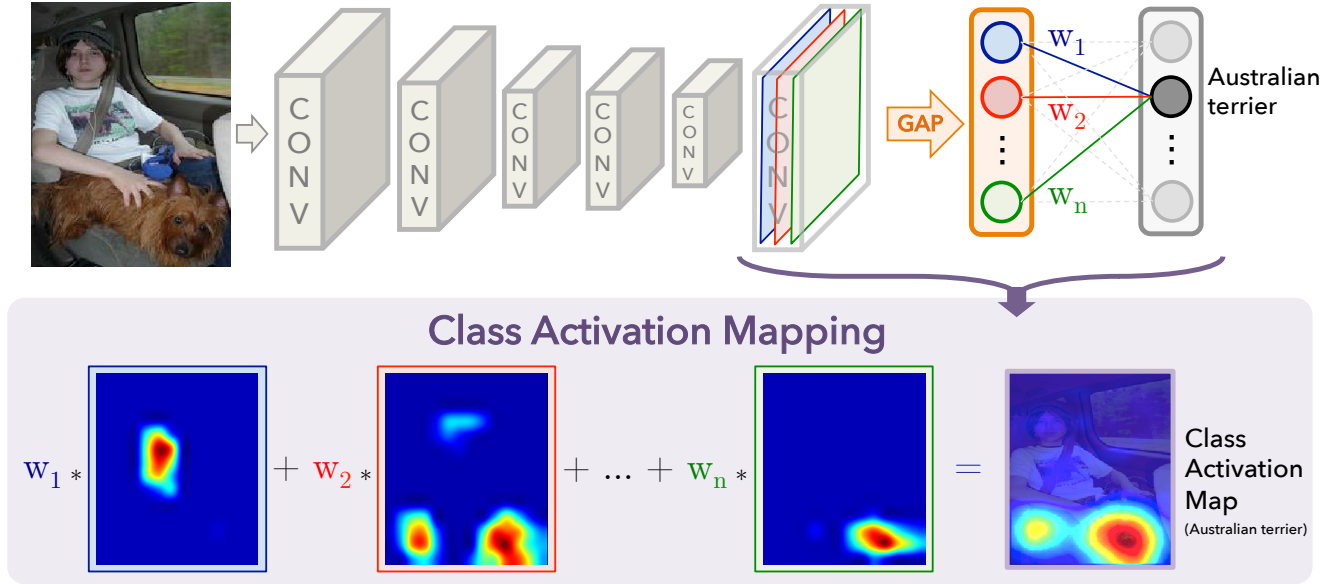


Figure 2. Class Activation Mapping: the predicted class score is mapped back to the previous convolutional layer to generate the class activation maps (CAMs). The CAM highlights the class-specific discriminative regions.

bias of the softmax to 0 as it has little to no impact on the classification performance.

By plugging $F_k = \sum_{x,y} f_k(x,y)$ into the class score, S_c , we obtain

$$\begin{aligned}
 S_c &= \sum_k w_k^c \sum_{x,y} f_k(x,y) \\
 &= \sum_{x,y} \sum_k w_k^c f_k(x,y). \quad (1)
 \end{aligned}$$

We define M_c as the class activation map for class c , where each spatial element is given by

$$M_c(x,y) = \sum_k w_k^c f_k(x,y). \quad (2)$$

Thus, $S_c = \sum_{x,y} M_c(x,y)$, and hence $M_c(x,y)$ directly indicates the importance of the activation at spatial grid (x,y) leading to the classification of an image to class c .

Intuitively, based on prior works [33, 29], we expect each unit to be activated by some visual pattern within its receptive field. Thus f_k is the map of the presence of this visual pattern. The class activation map is simply a weighted linear sum of the presence of these visual patterns at different spatial locations. By simply upsampling the class activation map to the size of the input image, we can identify the image regions most relevant to the particular category.

In Fig. 3, we show some examples of the CAMs output using the above approach. We can see that the discriminative regions of the images for various classes are highlighted. In Fig. 4 we highlight the differences in the CAMs for a single image when using different classes c to generate the maps. We observe that the discriminative regions

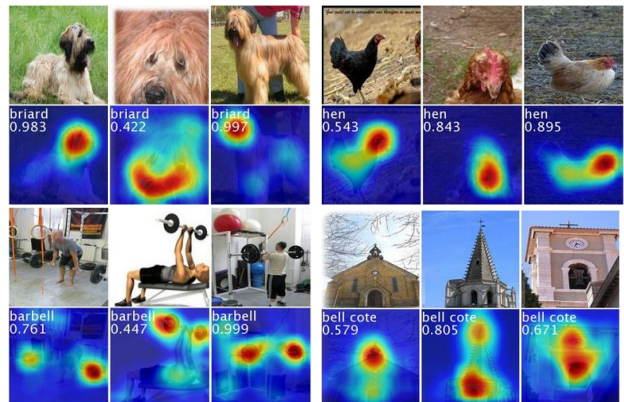


Figure 3. The CAMs of four classes from ILSVRC [20]. The maps highlight the discriminative image regions used for image classification e.g., the head of the animal for *briard* and *hen*, the plates in *barbell*, and the bell in *bell cote*.

for different categories are different even for a given image. This suggests that our approach works as expected. We demonstrate this quantitatively in the sections ahead.

Global average pooling (GAP) vs global max pooling (GMP): Given the prior work [16] on using GMP for weakly supervised object localization, we believe it is important to highlight the intuitive difference between GAP and GMP. We believe that GAP loss encourages the network to identify the extent of the object as compared to GMP which encourages it to identify just one discriminative part. This is because, when doing the average of a map, the value can be maximized by finding *all* discriminative parts of an object as all low activations reduce the output of

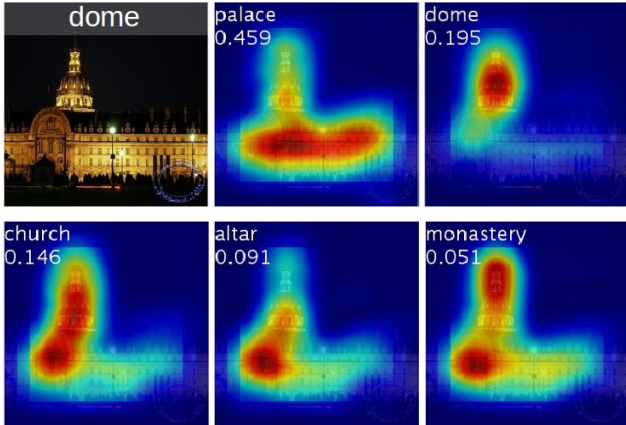


Figure 4. Examples of the CAMs generated from the top 5 predicted categories for the given image with ground-truth as dome. The predicted class and its score are shown above each class activation map. We observe that the highlighted regions vary across predicted classes e.g., *dome* activates the upper round part while *palace* activates the lower flat part of the compound.

the particular map. On the other hand, for GMP, low scores for all image regions except the most discriminative one do not impact the score as you just perform a max. We verify this experimentally on ILSVRC dataset in Sec. 3: while GMP achieves similar classification performance as GAP, GAP outperforms GMP for localization.

3. Weakly-supervised Object Localization

In this section, we evaluate the localization ability of CAM when trained on the ILSVRC 2014 benchmark dataset [20]. We first describe the experimental setup and the various CNNs used in Sec. 3.1. Then, in Sec. 3.2 we verify that our technique does not adversely impact the classification performance when learning to localize and provide detailed results on weakly-supervised object localization.

3.1. Setup

For our experiments we evaluate the effect of using CAM on the following popular CNNs: AlexNet [10], VGGnet [23], and GoogLeNet [24]. In general, for each of these networks we remove the fully-connected layers before the final output and replace them with GAP followed by a fully-connected softmax layer.

We found that the localization ability of the networks improved when the last convolutional layer before GAP had a higher spatial resolution, which we term the *mapping resolution*. In order to do this, we removed several convolutional layers from some of the networks. Specifically, we made the following modifications: For AlexNet, we removed the layers after `conv5` (i.e., `pool5` to `prob`) resulting in a mapping resolution of 13×13 . For VGGnet, we removed the layers after `conv5-3` (i.e., `pool5` to `prob`), result-

ing in a mapping resolution of 14×14 . For GoogLeNet, we removed the layers after `inception4e` (i.e., `pool4` to `prob`), resulting in a mapping resolution of 14×14 . To each of the above networks, we added a convolutional layer of size 3×3 , stride 1, pad 1 with 1024 units, followed by a GAP layer and a softmax layer. Each of these networks were then fine-tuned² on the 1.3M training images of ILSVRC [20] for 1000-way object classification resulting in our final networks AlexNet-GAP, VGGnet-GAP and GoogLeNet-GAP respectively.

For classification, we compare our approach against the original AlexNet [10], VGGnet [23], and GoogLeNet [24], and also provide results for Network in Network (NIN) [13]. For localization, we compare against the original GoogLeNet³, NIN and using backpropagation [22] instead of CAMs. Further, to compare average pooling against max pooling, we also provide results for GoogLeNet trained using global max pooling (GoogLeNet-GMP).

We use the same error metrics (top-1, top-5) as ILSVRC for both classification and localization to evaluate our networks. For classification, we evaluate on the ILSVRC validation set, and for localization we evaluate on both the validation and test sets.

3.2. Results

We first report results on object classification to demonstrate that our approach does not significantly hurt classification performance. Then we demonstrate that our approach is effective at weakly-supervised object localization.

Classification: Tbl. 1 summarizes the classification performance of both the original and our GAP networks. We find that in most cases there is a small performance drop of 1 – 2% when removing the additional layers from the various networks. We observe that AlexNet is the most affected by the removal of the fully-connected layers. To compensate, we add two convolutional layers just before GAP resulting in the AlexNet*-GAP network. We find that AlexNet*-GAP performs comparably to AlexNet. Thus, overall we find that the classification performance is largely preserved for our GAP networks. Further, we observe that GoogLeNet-GAP and GoogLeNet-GMP have similar performance on classification, as expected. Note that it is important for the networks to perform well on classification in order to achieve a high performance on localization as it involves identifying both the object category and the bounding box location accurately.

Localization: In order to perform localization, we need to generate a bounding box and its associated object category. To generate a bounding box from the CAMs, we use a simple thresholding technique to segment the heatmap. We first segment the regions of which the value is above 20%

²Training from scratch also resulted in similar performances.

³This has a lower mapping resolution than GoogLeNet-GAP.

Table 1. Classification error on the ILSVRC validation set.

Networks	top-1 val. error	top-5 val. error
VGGnet-GAP	33.4	12.2
GoogLeNet-GAP	35.0	13.2
AlexNet*-GAP	44.9	20.9
AlexNet-GAP	51.1	26.3
GoogLeNet	31.9	11.3
VGGnet	31.2	11.4
AlexNet	42.6	19.5
NIN	41.9	19.6
GoogLeNet-GMP	35.6	13.9

of the max value of the CAM. Then we take the bounding box that covers the largest connected component in the segmentation map. We do this for each of the top-5 predicted classes for the top-5 localization evaluation metric. Fig. 6(a) shows some example bounding boxes generated using this technique. The localization performance on the ILSVRC validation set is shown in Tbl. 2, and example outputs in Fig. 5.

We observe that our GAP networks outperform all the baseline approaches with GoogLeNet-GAP achieving the lowest localization error of 43% on top-5. This is remarkable given that this network was not trained on a single annotated bounding box. We observe that our CAM approach significantly outperforms the backpropagation approach of [22] (see Fig. 6(b) for a comparison of the outputs). Further, we observe that GoogLeNet-GAP significantly outperforms GoogLeNet on localization, despite this being reversed for classification. We believe that the low mapping resolution of GoogLeNet (7×7) prevents it from obtaining accurate localizations. Last, we observe that GoogLeNet-GAP outperforms GoogLeNet-GMP by a reasonable margin illustrating the importance of average pooling over max pooling for identifying the extent of objects.

To further compare our approach with the existing weakly-supervised [22] and fully-supervised [24, 21, 24] CNN methods, we evaluate the performance of GoogLeNet-GAP on the ILSVRC test set. We follow a slightly different bounding box selection strategy here: we select two bounding boxes (one tight and one loose) from the class activation map of the top 1st and 2nd predicted classes and one loose bounding boxes from the top 3rd predicted class. We found that this heuristic was helpful to improve performances on the validation set. The performances are summarized in Tbl. 3. GoogLeNet-GAP with heuristics achieves a top-5 error rate of 37.1% in a weakly-supervised setting, which is surprisingly close to the top-5 error rate of AlexNet (34.2%) in a fully-supervised setting. While impressive, we still have a long way to go when comparing the fully-supervised networks with the same architecture (i.e., weakly-supervised GoogLeNet-GAP vs fully-supervised GoogLeNet) for the localization.

Table 2. Localization error on the ILSVRC validation set. *Backprop* refers to using [22] for localization instead of CAM.

Method	top-1 val.error	top-5 val. error
GoogLeNet-GAP	56.40	43.00
VGGnet-GAP	57.20	45.14
GoogLeNet	60.09	49.34
AlexNet*-GAP	63.75	49.53
AlexNet-GAP	67.19	52.16
NIN	65.47	54.19
Backprop on GoogLeNet	61.31	50.55
Backprop on VGGnet	61.12	51.46
Backprop on AlexNet	65.17	52.64
GoogLeNet-GMP	57.78	45.26

Table 3. Localization error on the ILSVRC test set for various weakly- and fully- supervised methods.

Method	supervision	top-5 test error
GoogLeNet-GAP (heuristics)	weakly	37.1
GoogLeNet-GAP	weakly	42.9
Backprop [22]	weakly	46.4
GoogLeNet [24]	full	26.7
OverFeat [21]	full	29.9
AlexNet [24]	full	34.2

4. Deep Features for Generic Localization

The responses from the higher-level layers of CNN (e.g., f_{c6} , f_{c7} from AlexNet) have been shown to be very effective generic features with state-of-the-art performance on a variety of image datasets [3, 19, 34]. Here, we show that the features learned by our GAP CNNs also perform well as generic features, and as bonus, identify the discriminative image regions used for categorization, despite not having been trained for those particular tasks. To obtain the weights similar to the original softmax layer, we simply train a linear SVM [5] on the output of the GAP layer.

First, we compare the performance of our approach and some baselines on the following scene and object classification benchmarks: SUN397 [27], MIT Indoor67 [18], Scene15 [11], SUN Attribute [17], Caltech101 [6], Caltech256 [9], Stanford Action40 [28], and UIUC Event8 [12]. The experimental setup is the same as in [34]. In Tbl. 5, we compare the performance of features from our best network, GoogLeNet-GAP, with the f_{c7} features from AlexNet, and *ave pool* from GoogLeNet.

As expected, GoogLeNet-GAP and GoogLeNet significantly outperform AlexNet. Also, we observe that GoogLeNet-GAP and GoogLeNet perform similarly despite the former having fewer convolutional layers. Overall, we find that GoogLeNet-GAP features are competitive with the state-of-the-art as generic visual features.

More importantly, we want to explore whether the localization maps generated using our CAM technique with GoogLeNet-GAP are informative even in this scenario. Fig. 8 shows some example maps for various datasets. We observe that the most discriminative regions tend to be highlighted across all datasets. Overall, our approach is effective

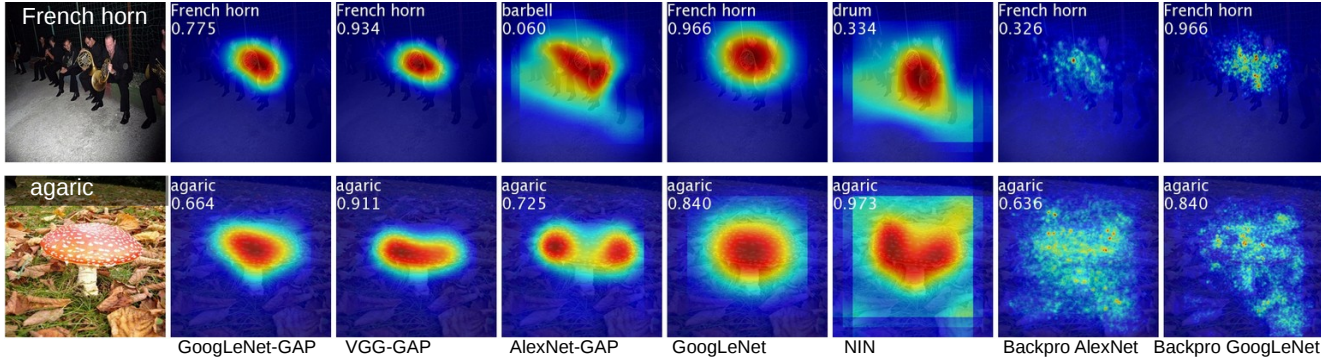


Figure 5. Class activation maps from CNN-GAPs and the class-specific saliency map from the backpropagation methods.

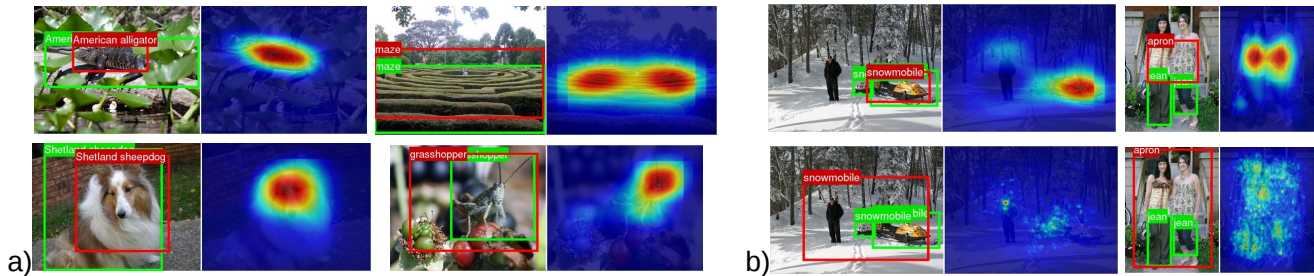


Figure 6. a) Examples of localization from GoogLeNet-GAP. b) Comparison of the localization from GoogLeNet-GAP (upper two) and the backpropagation using AlexNet (lower two). The ground-truth boxes are in green and the predicted bounding boxes from the class activation map are in red.

for generating localizable deep features for generic tasks.

In Sec. 4.1, we explore fine-grained recognition of birds and demonstrate how we evaluate the generic localization ability and use it to further improve performance. In Sec. 4.2 we demonstrate how GoogLeNet-GAP can be used to identify generic visual patterns from images.

4.1. Fine-grained Recognition

In this section, we apply our generic localizable deep features to identifying 200 bird species in the CUB-200-2011 [26] dataset. The dataset contains 11,788 images, with 5,994 images for training and 5,794 for test. We choose this dataset as it also contains bounding box annotations allowing us to evaluate our localization ability. Tbl. 4 summarizes the results.

We find that GoogLeNet-GAP performs comparably to existing approaches, achieving an accuracy of 63.0% when using the full image without any bounding box annotations for both train and test. When using bounding box annotations, this accuracy increases to 70.5%. Now, given the localization ability of our network, we can use a similar approach as Sec. 3.2 (i.e., thresholding) to first identify bird bounding boxes in both the train and test sets. We then use GoogLeNet-GAP to extract features again from the crops inside the bounding box, for training and testing. We find that this improves the performance considerably to 67.8%.

Table 4. Fine-grained classification performance on CUB200 dataset. GoogLeNet-GAP can successfully localize important image crops, boosting classification performance.

Methods	Train/Test Anno.	Accuracy
GoogLeNet-GAP on full image	n/a	63.0%
GoogLeNet-GAP on crop	n/a	67.8%
GoogLeNet-GAP on BBox	BBox	70.5%
Alignments [7]	n/a	53.6%
Alignments [7]	BBox	67.0%
DPD [31]	BBox+Parts	51.0%
DeCAF+DPD [3]	BBox+Parts	65.0%
PANDA R-CNN [30]	BBox+Parts	76.4%

This localization ability is particularly important for fine-grained recognition as the distinctions between the categories are subtle and having a more focused image crop allows for better discrimination.

Further, we find that GoogLeNet-GAP is able to accurately localize the bird in 41.0% of the images under the 0.5 intersection over union (IoU) criterion, as compared to a chance performance of 5.5%. We visualize some examples in Fig. 7. This further validates the localization ability of our approach.

4.2. Pattern Discovery

In this section, we explore whether our technique can identify common elements or patterns in images beyond

Table 5. Classification accuracy on representative scene and object datasets for different deep features.

	SUN397	MIT Indoor67	Scene15	SUN Attribute	Caltech101	Caltech256	Action40	Event8
fc7 from AlexNet	42.61	56.79	84.23	84.23	87.22	67.23	54.92	94.42
ave pool from GoogLeNet	51.68	66.63	88.02	92.85	92.05	78.99	72.03	95.42
gap from GoogLeNet-GAP	51.31	66.61	88.30	92.21	91.98	78.07	70.62	95.00

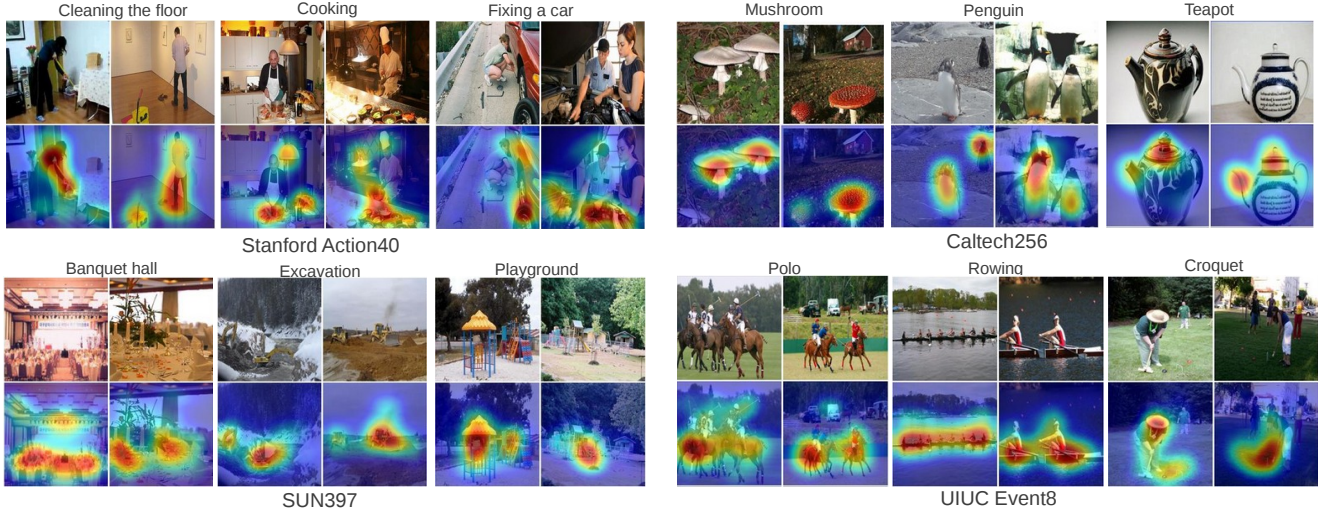


Figure 8. Generic discriminative localization using our GoogLeNet-GAP deep features (which have been trained to recognize objects). We show 2 images each from 3 classes for 4 datasets, and their class activation maps below them. We observe that the discriminative regions of the images are often highlighted e.g., in Stanford Action40, the mop is localized for *cleaning the floor*, while for *cooking* the pan and bowl are localized and similar observations can be made in other datasets. This demonstrates the generic localization ability of our deep features.

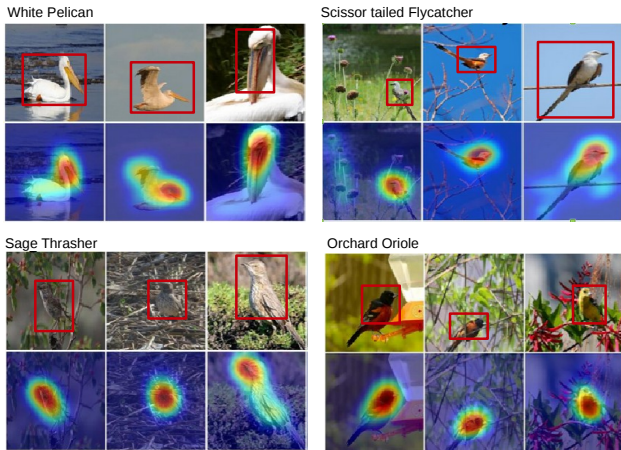


Figure 7. CAMs and the inferred bounding boxes (in red) for selected images from four bird categories in CUB200. In Sec. 4.1 we quantitatively evaluate the quality of the bounding boxes (41.0% accuracy for 0.5 IoU). We find that extracting GoogLeNet-GAP features in these CAM bounding boxes and re-training the SVM improves bird classification accuracy by about 5% (Tbl. 4).

objects, such as text or high-level concepts. Given a set of images containing a common concept, we want to identify which regions our network recognizes as being important and if this corresponds to the input pattern. We fol-

low a similar approach as before: we train a linear SVM on the GAP layer of the GoogLeNet-GAP network and apply the CAM technique to identify important regions. We conducted three pattern discovery experiments using our deep features. The results are summarized below. Note that in this case, we do not have train and test splits – we just use our CNN for visual pattern discovery.

Discovering informative objects in the scenes: We take 10 scene categories from the SUN dataset [27] containing at least 200 fully annotated images, resulting in a total of 4675 fully annotated images. We train a one-vs-all linear SVM for each scene category and compute the CAMs using the weights of the linear SVM. In Fig. 9 we plot the CAM for the predicted scene category and list the top 6 objects that most frequently overlap with the high CAM activation regions for two scene categories. We observe that the high activation regions frequently correspond to objects indicative of the particular scene category.

Concept localization in weakly labeled images: Using the hard-negative mining algorithm from [32], we learn concept detectors and apply our CAM technique to localize concepts in the image. To train a concept detector for a short phrase, the positive set consists of images that contain the short phrase in their text caption, and the negative set is composed of randomly selected images without any relevant words in their text caption. In Fig. 10, we visualize

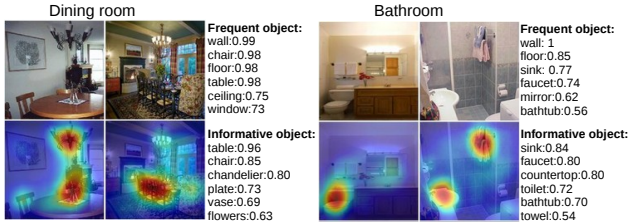


Figure 9. Informative objects for two scene categories. For the dining room and bathroom categories, we show examples of original images (top), and list of the 6 most frequent objects in that scene category with the corresponding frequency of appearance. At the bottom: the CAMs and a list of the 6 objects that most frequently overlap with the high activation regions.

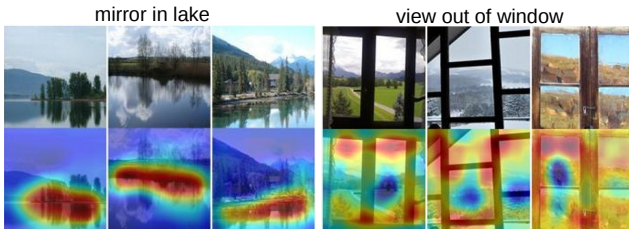


Figure 10. Informative regions for the concept learned from weakly labeled images. Despite being fairly abstract, the concepts are adequately localized by our GoogLeNet-GAP network.



Figure 11. Learning a weakly supervised text detector. The text is accurately detected on the image even though our network is not trained with text or any bounding box annotations.

the top ranked images and CAMs for two concept detectors. Note that CAM localizes the informative regions for the concepts, even though the phrases are much more abstract than typical object names.

Weakly supervised text detector: We train a weakly supervised text detector using 350 Google StreetView images containing text from the SVT dataset [25] as the positive set and randomly sampled images from outdoor scene images in the SUN dataset [27] as the negative set. As shown in Fig. 11, our approach highlights the text accurately without using bounding box annotations.

Interpreting visual question answering: We use our approach and localizable deep feature in the baseline proposed in [35] for visual question answering. It has overall accuracy 55.89% on the test-standard in the Open-Ended track. As shown in Fig. 12, our approach highlights the image regions relevant to the predicted answers.

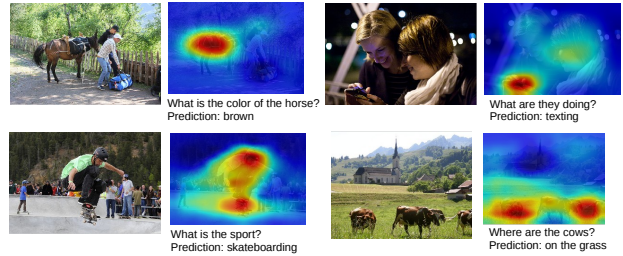


Figure 12. Examples of highlighted image regions for the predicted answer class in the visual question answering.

5. Visualizing Class-Specific Units

Zhou *et al* [33] have shown that the convolutional units of various layers of CNNs act as visual concept detectors, identifying low-level concepts like textures or materials, to high-level concepts like objects or scenes. Deeper into the network, the units become increasingly discriminative. However, given the fully-connected layers in many networks, it can be difficult to identify the importance of different units for identifying different categories. Here, using GAP and the ranked softmax weight, we can directly visualize the units that are most discriminative for a given class. Here we call them the *class-specific units* of a CNN.

Fig. 13 shows the class-specific units for AlexNet*-GAP trained on ILSVRC dataset for object recognition (top) and Places Database for scene recognition (bottom). We follow a similar procedure as [33] for estimating the receptive field and segmenting the top activation images of each unit in the final convolutional layer. Then we simply use the softmax weights to rank the units for a given class. From the figure we can identify the parts of the object that are most discriminative for classification and exactly which units detect these parts. For example, the units detecting dog face and body fur are important to *lakeland terrier*; the units detecting sofa, table and fireplace are important to the *living room*. Thus we could infer that the CNN actually learns a bag of words, where each word is a discriminative class-specific unit. A combination of these class-specific units guides the CNN in classifying each image.

6. Conclusion

In this work we propose a general technique called Class Activation Mapping (CAM) for CNNs with global average pooling. This enables classification-trained CNNs to learn to perform object localization, without using any bounding box annotations. Class activation maps allow us to visualize the predicted class scores on any given image, highlighting the discriminative object parts detected by the CNN. We evaluate our approach on weakly supervised object localization on the ILSVRC benchmark, demonstrating that our global average pooling CNNs can perform accurate object

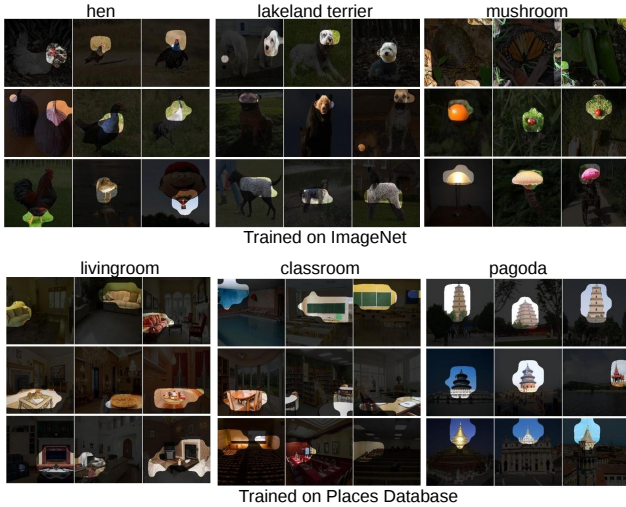


Figure 13. Visualization of the class-specific units for AlexNet*-GAP trained on ImageNet (top) and Places (bottom) respectively. The top 3 units for three selected classes are shown for each dataset. Each row shows the most confident images segmented by the receptive field of that unit. For example, units detecting blackboard, chairs, and tables are important to the classification of *classroom* for the network trained for scene recognition.

localization. Furthermore we demonstrate that the CAM localization technique generalizes to other visual recognition tasks i.e., our technique produces generic localizable deep features that can aid other researchers in understanding the basis of discrimination used by CNNs for their tasks.

References

- [1] A. Bergamo, L. Bazzani, D. Anguelov, and L. Torresani. Self-taught object localization with deep networks. *arXiv preprint arXiv:1409.3964*, 2014.
- [2] R. G. Cinbis, J. Verbeek, and C. Schmid. Weakly supervised object localization with multi-fold multiple instance learning. *IEEE Trans. on Pattern Analysis and Machine Intelligence*, 2015.
- [3] J. Donahue, Y. Jia, O. Vinyals, J. Hoffman, N. Zhang, E. Tzeng, and T. Darrell. Decaf: A deep convolutional activation feature for generic visual recognition. *International Conference on Machine Learning*, 2014.
- [4] A. Dosovitskiy and T. Brox. Inverting convolutional networks with convolutional networks. *arXiv preprint arXiv:1506.02753*, 2015.
- [5] R.-E. Fan, K.-W. Chang, C.-J. Hsieh, X.-R. Wang, and C.-J. Lin. Liblinear: A library for large linear classification. *The Journal of Machine Learning Research*, 2008.
- [6] L. Fei-Fei, R. Fergus, and P. Perona. Learning generative visual models from few training examples: An incremental bayesian approach tested on 101 object categories. *Computer Vision and Image Understanding*, 2007.
- [7] E. Gavves, B. Fernando, C. G. Snoek, A. W. Smeulders, and T. Tuytelaars. Local alignments for fine-grained categorization. *Int'l Journal of Computer Vision*, 2014.
- [8] R. Girshick, J. Donahue, T. Darrell, and J. Malik. Rich feature hierarchies for accurate object detection and semantic segmentation. *Proc. CVPR*, 2014.
- [9] G. Griffin, A. Holub, and P. Perona. Caltech-256 object category dataset. 2007.
- [10] A. Krizhevsky, I. Sutskever, and G. E. Hinton. Imagenet classification with deep convolutional neural networks. *In Advances in Neural Information Processing Systems*, 2012.
- [11] S. Lazebnik, C. Schmid, and J. Ponce. Beyond bags of features: Spatial pyramid matching for recognizing natural scene categories. *Proc. CVPR*, 2006.
- [12] L.-J. Li and L. Fei-Fei. What, where and who? classifying events by scene and object recognition. *Proc. ICCV*, 2007.
- [13] M. Lin, Q. Chen, and S. Yan. Network in network. *International Conference on Learning Representations*, 2014.
- [14] A. Mahendran and A. Vedaldi. Understanding deep image representations by inverting them. *Proc. CVPR*, 2015.
- [15] M. Oquab, L. Bottou, I. Laptev, and J. Sivic. Learning and transferring mid-level image representations using convolutional neural networks. *Proc. CVPR*, 2014.
- [16] M. Oquab, L. Bottou, I. Laptev, and J. Sivic. Is object localization for free? weakly-supervised learning with convolutional neural networks. *Proc. CVPR*, 2015.
- [17] G. Patterson and J. Hays. Sun attribute database: Discovering, annotating, and recognizing scene attributes. *Proc. CVPR*, 2012.
- [18] A. Quattoni and A. Torralba. Recognizing indoor scenes. *Proc. CVPR*, 2009.
- [19] A. S. Razavian, H. Azizpour, J. Sullivan, and S. Carlsson. Cnn features off-the-shelf: an astounding baseline for recognition. *arXiv preprint arXiv:1403.6382*, 2014.
- [20] O. Russakovsky, J. Deng, H. Su, J. Krause, S. Satheesh, S. Ma, Z. Huang, A. Karpathy, A. Khosla, M. Bernstein, A. C. Berg, and L. Fei-Fei. Imagenet large scale visual recognition challenge. *In Int'l Journal of Computer Vision*, 2015.
- [21] P. Sermanet, D. Eigen, X. Zhang, M. Mathieu, R. Fergus, and Y. LeCun. Overfeat: Integrated recognition, localization and detection using convolutional networks. *arXiv preprint arXiv:1312.6229*, 2013.
- [22] K. Simonyan, A. Vedaldi, and A. Zisserman. Deep inside convolutional networks: Visualising image classification models and saliency maps. *International Conference on Learning Representations Workshop*, 2014.
- [23] K. Simonyan and A. Zisserman. Very deep convolutional networks for large-scale image recognition. *International Conference on Learning Representations*, 2015.
- [24] C. Szegedy, W. Liu, Y. Jia, P. Sermanet, S. Reed, D. Anguelov, D. Erhan, V. Vanhoucke, and A. Rabinovich. Going deeper with convolutions. *arXiv preprint arXiv:1409.4842*, 2014.
- [25] K. Wang, B. Babenko, and S. Belongie. End-to-end scene text recognition. *Proc. ICCV*, 2011.
- [26] P. Welinder, S. Branson, T. Mita, C. Wah, F. Schroff, S. Belongie, and P. Perona. Caltech-UCSD Birds 200. Technical report, California Institute of Technology, 2010.
- [27] J. Xiao, J. Hays, K. A. Ehinger, A. Oliva, and A. Torralba. Sun database: Large-scale scene recognition from abbey to zoo. *Proc. CVPR*, 2010.

- [28] B. Yao, X. Jiang, A. Khosla, A. L. Lin, L. Guibas, and L. Fei-Fei. Human action recognition by learning bases of action attributes and parts. *Proc. ICCV*, 2011.
- [29] M. D. Zeiler and R. Fergus. Visualizing and understanding convolutional networks. *Proc. ECCV*, 2014.
- [30] N. Zhang, J. Donahue, R. Girshick, and T. Darrell. Part-based r-cnns for fine-grained category detection. *Proc. ECCV*, 2014.
- [31] N. Zhang, R. Farrell, F. Iandola, and T. Darrell. Deformable part descriptors for fine-grained recognition and attribute prediction. *Proc. ICCV*, 2013.
- [32] B. Zhou, V. Jagadeesh, and R. Piramuthu. Conceptlearner: Discovering visual concepts from weakly labeled image collections. *Proc. CVPR*, 2015.
- [33] B. Zhou, A. Khosla, A. Lapedriza, A. Oliva, and A. Torralba. Object detectors emerge in deep scene cnns. *International Conference on Learning Representations*, 2015.
- [34] B. Zhou, A. Lapedriza, J. Xiao, A. Torralba, and A. Oliva. Learning deep features for scene recognition using places database. *In Advances in Neural Information Processing Systems*, 2014.
- [35] B. Zhou, Y. Tian, S. Sukhbaatar, A. Szlam, and R. Fergus. Simple baseline for visual question answering. *arXiv preprint arXiv:1512.02167*, 2015.