

MIT Open Access Articles

Dynamics of Housing Debt in the Recent Boom and Great Recession

The MIT Faculty has made this article openly available. **Please share** how this access benefits you. Your story matters.

Citation: Adelino, Manuel, Antoinette Schoar, and Felipe Severino. "Dynamics of Housing Debt in the Recent Boom and Great Recession." NBER Macroeconomics Annual 32, no. 1 (April 2018): 265–311.

As Published: <http://dx.doi.org/10.1086/696054>

Publisher: University of Chicago Press

Persistent URL: <http://hdl.handle.net/1721.1/121093>

Version: Final published version: final published article, as it appeared in a journal, conference proceedings, or other formally published context

Terms of Use: Article is made available in accordance with the publisher's policy and may be subject to US copyright law. Please refer to the publisher's site for terms of use.



Dynamics of Housing Debt in the Recent Boom and Great Recession

Manuel Adelino, *Duke University and NBER*

Antoinette Schoar, *MIT and NBER*

Felipe Severino, *Dartmouth College*

The lasting impact of the mortgage crisis of 2008 on the US economy and international financial markets has spurred an intense debate among economists and policymakers about the origins of the crisis. The collapse of collateral values post-2007 led to a large increase in defaults, which in turn disrupted banks and the shadow banking system and was a leading cause of the deep recession that followed. Even after large government-stabilization programs, low house prices and depressed expectations held back investment and consumption. The rapid increase in household debt over the first decade of the twenty-first century, especially mortgage credit, has been widely documented, but views differ on what drove this expansion in credit. This paper outlines the two major narratives that have been proposed to explain the crisis and lays out the evidence that aims to differentiate them. We call these the *subprime view* and the *expectations view* of the boom and bust. We provide new facts and confirm several prior findings on the evolution of debt, homeownership rates, debt-to-income (DTI) ratios, and loan-to-value (LTV) ratios during both the housing boom and the housing bust.¹ The results support the idea that house prices and house price expectations played a central role in both the expansion of credit and the subsequent housing market bust.

One view of the housing boom and bust is that financial innovation and deregulation in the precrisis period led to increased securitization and delegation in underwriting, which in turn exacerbated agency problems within the mortgage origination chain and led to distortions in underwriting (the *subprime view*). A number of theory papers have laid out particular channels by which these distortions might have affected mortgage lending, such as Parlour and Plantin (2008), Dang, Gor-

ton, and Holmström (2010), and Chemla and Hennessy (2014). Popular narratives (such as Michael Lewis's *The Big Short* in 2015 and the 2010 movie *Inside Job*) put forward the idea that increased misalignment of incentives led financial institutions to provide unsustainable credit to low-income and poor-credit-quality borrowers, so-called subprime borrowers, who previously might have been rationed out of the mortgage market (see, e.g., Mian and Sufi 2015).

The alternative view emphasizes the role of house price expectations in explaining the increased credit supply (the *expectations* view). According to this view, inflated house price expectations led banks to underestimate the potential for losses and the losses given default. Inflated house price expectations might also have led borrowers to increase demand for housing and exploit the expanded credit supply.² However, heterogeneous priors about house prices by themselves do not lead to boom-and-bust cycles because prices would immediately adjust, and the impact of optimistic agents in the housing market must vary over time in order to generate those cycles. One channel through which the role of optimistic agents changes endogenously over the business cycle is changes in collateral-lending standards.³ Looser collateral standards after periods of good performance in the housing market (higher combined loan-to-value ratios [CLTVs]) can allow more optimistic agents to hold a larger fraction of assets and, as a result, drive up house prices.⁴ An alternative channel proposes that the *number* of optimistic agents changes with the credit cycle. For example, if house price expectations are extrapolative or adaptive, initial increases in house prices can feed on themselves; see, for example, Barberis et al. (2015), Lo (2004), Genaioli, Shleifer, and Vishny (2015), or DeFusco, Nathanson, and Zwick (2017). Burnside, Eichenbaum, and Rebelo (forthcoming) provide a different microfoundation via social contagion, where optimistic agents with tighter priors can convince less optimistic agents to change their beliefs.

What might have triggered these initial changes in house prices and expectations? The savings glut that led to increasing capital inflows to the United States and lower interest rates is often seen as a trigger for increasing house prices (see, in particular, Bernanke 2007; Rajan 2011; Bhutta 2015). These might have been exaggerated by demographic trends in mobility (Ferreira and Gyourko 2011) or gentrification trends (Guerrieri, Hartley, and Hurst 2013).

It is important to understand the primary drivers of the recent boom-and-bust cycle in household leverage, since it not only affects the diag-

nosis but also suggests different policy changes to guard against future crises. If the first view dominates, then regulations that force lenders to have more skin in the game, reduce securitization, and impose stricter screening of (marginal) borrowers are central. Under the second view, the focus needs to be on macroprudential regulation and rules that support the stability of banks, even when asset values change or may be overinflated.⁵

The discussion above illustrates the challenges of differentiating between the subprime view and the expectations view of the crisis. The explanations are not mutually exclusive and may even reinforce each other. If, for example, market participants believe that house prices can only rise, they may not see a need to screen borrowers because higher house prices protect the lender. As a result, changes in house price expectations may themselves trigger changes in lending standards, and the loosening of credit standards might be the *result* of rising house price expectations rather than the cause of those increases.⁶ The challenge of cleanly testing these models lies not only in the common problem that economic outcomes are endogenously determined, but also in that expectations are generally not observed.

We show, however, that the expectations view and the subprime view have several defining differences. A central prediction of the subprime view is that a relaxation in credit standards leads to *cross-sectional* dislocations in credit flows toward poorer and subprime borrowers, as Mian and Sufi (2009) point out. As a result, aggregate credit flows, DTI ratios, and even LTV ratios should increase disproportionately for these marginal groups, independent of house price increases. We show that, instead, and in line with the expectations view, areas with rapid house price increases saw the bulk of the credit expansion and similar increases in homeownership rates. In these areas, homeowners also took on more credit by accelerating the speed with which they sell and buy homes (churn) and obtain cash-out refinances. Importantly, though, the credit expansion was not particularly concentrated in low-credit-score or low-income borrowers. At the same time, the distribution of LTV ratios at origination (i.e., the LTV ratios of the new purchases) remained unchanged over the boom period, suggesting that lenders took the higher house prices at face value and lent in *response* to higher house values (higher “Vs”).⁷ After the onset of the crisis, however, defaults went up disproportionately in areas where house prices dropped most significantly, and middle-income and average-credit-score borrowers saw a very large increase in their share of total defaults. In what follows,

we provide a comprehensive analysis of the credit dynamics of the recent boom-and-bust cycle.

Credit Flows, Stock, and DTI. We first document that there were no significant cross-sectional dislocations in either aggregate credit flows or the stock of household debt across income or FICO bins. Using loan-level data from the Home Mortgage Disclosure Act (HMDA) and Lender Processing Services (LPS), we confirm that the flow of new (purchase) mortgage credit across the income and credit score distribution was stable over the period 2001–2007 (consistent with evidence in Adelino, Schoar, and Severino [2016]). Of course, the dollar amount of purchase mortgage credit grew significantly over this time, but it did so for all income and FICO-score groups. Credit *flows*, however, may tell only an incomplete story of the *stock* of household leverage if households across income groups: (a) differentially retire or refinance existing debt, (b) increase how quickly they buy and sell houses (churn), or (c) change the likelihood of entering into homeownership. Therefore, we first use Survey of Consumer Finances (SCF) data, which track the entire stock of mortgage debt, including purchase mortgages, second liens, and other home equity lines to show that the stock of DTI at the household level increased proportionally across the income distribution. Foote, Loewenstein, and Willen (2016) confirm this finding using Equifax data. We then use data from the American Community Survey (ACS) to create a proxy for the household's debt burden. We look at housing cost as a proportion of income as a measure of the household's mortgage debt burden, including second liens and other home equity lines. We show that housing costs as a share of income moved together for all homeowners in the data with the exception of households at the very top of the income distribution.

The ACS data also allow us to break out the increase in homeownership cost by states with above- and below-median house price appreciation. We find a much higher increase in the cost of ownership for people in high-appreciation areas compared to low-appreciation areas; for example, for the middle 60% of households by income, the cost of owning increases by 6–8 percentage points of income more in these areas than in low-appreciation areas between 2001 and 2006. This increase is entirely reversed by 2011. These results suggest that the changes in the cost of homeownership are fundamentally tied to area house price movements. A very similar picture emerges when we look at house values as a share of income.

While this is separate from the subprime view of the crisis, one might wonder whether DTI ratios and observable characteristics of households capture the full story of the mortgage expansion. For example, did credit flow to households that were “marginal” borrowers on unobservable dimensions (e.g., due to unobserved future income risk)? Testing for unobservable characteristics is difficult by definition, but we can analyze whether mortgage acceptance rates within DTI bins increased during this period. In figure A1 of the appendix, we show that the acceptance rate of mortgage applications within DTI bins did not go up during the boom. In fact, we see a slight downward trend, especially for the higher income groups. Given that approval rates conditional on income bins did not change significantly, it is unlikely that there was a massive change in the selection on unobservables at the same time.

Homeownership Rates. Second, using ACS data on homeownership rates, we show that the boom made homeownership *less* accessible for the lowest-income households. Starting in 2001, low-income households entered homeownership at lower rates than middle- and high-income households, and households above the 20th percentile all saw similar increases in homeownership over the period. When we break out the results by areas with fast and slow house price growth, we find that the results hold similarly in both types of areas. But the steep decline in ownership rates for the lowest-income group already starts in 2001 for areas with low house price appreciation. These results are consistent across three large-scale census surveys (the ACS, the American Housing Survey, and the Consumer Population Survey). The patterns are also consistent with Acolin et al. (2017), who show that subprime lending was not associated with increases in homeownership rates, and with Foote, Loewenstein, and Willen (2016), who use the SCF and find no increases in homeownership for low-income households. These results contradict the view that distortions in credit originations occurred at the extensive margin (Mian and Sufi 2016), and that lax lending standards allowed low-income households, who previously were rationed out of the market, to become homeowners. It also suggests that in the post-2000 period, the Community Reinvestment Act did not achieve its goal of increasing homeownership of lower-income households.

Cost of Renting Relative to the Cost of Owning. Third, using ACS data, we show that the gap in the cost of renting versus that of owning

(for recent movers) was relatively close at the beginning of the twenty-first century, but it increases to 4% of income on average at the peak of the boom. After the onset of the crisis, this gap drops by a full 10% of income. For households in the second income quintile, rental costs jump the most and become higher than the cost of owning. These patterns are consistent with the expectations view as in Kaplan, Mitman, and Violante (2016), where future house price appreciation sustains the divergence between costs of renting and owning. The results also suggest that, once the crisis started, large parts of the housing stock were tied up in foreclosures and drove up rental costs, especially for low-income households.

Churn. Another channel through which households can lever up is by increasing how quickly they move into new (potentially larger) homes. Each time a household moves, it typically repays an older (and usually lower LTV and DTI) mortgage and gets a new mortgage, which resets the mortgage to a new and higher level. We show that the rate at which owners moved into new homes peaked in 2006, with approximately 8% of households moving in each year. This rate increased in lockstep across the income distribution. Low-income households had lower levels of churn relative to higher-income ones during the boom, 6% versus 9%, respectively. For all income groups, the rate of movement drops to about 5% during the crisis period and returns to about 6% by 2015. This is in line with the notion that optimistic homeowners exploited increasing house prices by flipping houses more quickly and using the capital gains in one property as a down payment for a larger home (Stein 1995). For example, Piazzesi and Schneider (2009) show that the fraction of homeowners who are very optimistic about house prices doubled between 2004 and 2006 (from 10% to 20% of the population).

LTV. To better understand the role that house prices played in increasing DTI levels during the boom period, we analyze CLTV levels, a central parameter in determining the tightness of collateralized lending.⁸ We use data from CoreLogic (formerly DataQuick) for this analysis. A number of theories suggest that increases in house prices play an important role in explaining household leverage via LTV levels (Makarov and Plantin [2013, Landvoigt, Piazzesi and Schneider [2015]). Interestingly, the distribution of CLTV levels at origination between 2001 and 2007 was very stable, with almost no changes over time. The median home purchase had a CLTV of 90%, and loans at the 90th percentile of leverage had a CLTV of almost 100%, even at the beginning of the first

decade of the twenty-first century. Maybe even more surprisingly, there are no pronounced differences in the evolution of CLTV ratios when we split the data by areas with high and low house price growth or by level of house price. These results are consistent with Ferreira and Gyourko (2015), who use similar data and track CLTVs of households at origination and over time. Taken together, these results do not support a view that lenders relaxed collateral constraints by significantly changing CLTV ratios. Instead, lenders seem to have lent against increased home prices without factoring in the risk that house-price levels could be too high or that there might be a house price downturn. This view is supported by Cheng, Raina, and Xiong (2014), who use personal home transaction data to show that midlevel managers in securitized finance did not seem to anticipate the housing downturn. Also in line with the idea that lenders passively lent against increased house prices but otherwise did not significantly increase access to finance for marginal borrowers, we find that households in all income quintiles who purchase homes have similar (and small) drops in terms of the stability of employment over the boom. While higher-income households are more likely to have at least one member of the family employed full time, these differences between income levels did not change over the boom. However, at the onset of the mortgage crisis, we see a sudden spike in the share of households with full-time employment, which most likely reflects the tightening of credit during the Great Recession.

Defaults. Finally, when looking at ex post defaults, Adelino et al. (2016) show that middle-income and prime borrowers all sharply increase their share of total delinquencies in the crisis compared to precrisis patterns. This sharp increase, moreover, is concentrated in prime borrowers in high house appreciation areas in the boom (see also Mayer, Pence and Sherlund [2009], who show that near-prime borrowers had a larger proportional increase in delinquency rates than subprime ones, Albanesi, De Giorgi, and Nosal [2016] using Equifax data).⁹ This set of facts is most consistent with the expectations view, where borrowers took out mortgages against inflated house price values and defaulted when house prices dropped.

In light of the evidence presented above, it is important to understand why some of the earlier empirical literature about the housing crisis arrived at different conclusions to rule out the relevance of the expectations view. The subprime view as proposed in Mian and Sufi (2009) relies on two main findings. First, the authors suggest that there was a disproportionate flow of new mortgage debt to low-income households. This finding seems to be in direct contrast to the findings docu-

mented above. The discrepancy stems from the fact that Mian and Sufi (2009) use mortgage and income data aggregated up to the ZIP Code level, and not the household level. At the ZIP Code level, mortgage credit can go up for two reasons: either because there is an increase in average mortgage size (DTI) or because of an increase in originations in a ZIP Code due to quicker selling and buying of houses (churn).¹⁰ As shown in Adelino et al. (2016), the negative correlation between mortgage growth and income growth at the ZIP Code level is entirely driven by the increase in the rate of churn across neighborhoods.¹¹ Therefore, once we decompose these different margins of credit flows, there is no cross-sectional dislocation in either credit flows or homeownership rates to lower-income or marginal households.

A second major argument to rule out that expectations were the key driver for the credit expansion is that it was instead subprime lending in a ZIP Code (as a proxy for distorted incentives) that drove house price growth. On average, it is the case that neighborhoods with a higher share of subprime lenders (and loans) had quicker credit expansion, since these lenders tend to be in neighborhoods that saw quicker house price growth. However, there is significant heterogeneity in house price growth and the share of subprime loans between neighborhoods. If we do a simple double-sort of ZIP Codes by the market share of subprime lenders and the growth in house prices between 2002 and 2006,¹² we see that growth in mortgage origination sorts strongly with house price growth, independent of the level of subprime lenders in the ZIP Code. This means that credit went up significantly, even in areas with a small fraction of subprime lenders but high house price appreciation. The correlation is much weaker in the other direction: once we control for house price growth in an area, there is only a weak correlation between mortgage growth with the share of subprime lending. This suggests that, even though subprime lenders tend to be located more often in neighborhoods that experienced higher house price growth in the boom, they are unlikely to be driving the growth. While it is, of course, not possible to establish causality with this type of cross-sectional analysis, the results again point to the role of asset prices, even when explaining where subprime lending expanded and where not.

In sum, a careful review of the major trends in mortgage markets leading up to the 2008 crisis casts doubt on a one-sided explanation of the events as a subprime crisis. The results presented here support a view of the boom in which financial institutions and banks bought into increasing house prices because of overly optimistic expectations. This broad-based increase in borrowing and housing prices might have

been triggered initially through lower interest rates at the beginning of the twenty-first century. In turn, credit standards may have fallen *as a result* of higher house prices because lenders were too willing to rely on collateral values alone.

Our results also show why it is important to understand the drivers of the crisis. We show that, after 2008, credit to lower-income borrowers dropped dramatically and prompted a significant decline in homeownership rates for low-income households. Seen through the lens of the subprime view, one might have welcomed the change in mortgage markets as a sign that marginal or low-income groups were now successfully being screened out. Under the expectations view, however, these facts raise the concern that regulatory changes that more significantly affected lower-income households prevented them from buying houses when prices were historically low, without improving the stability of the mortgage market.

I. Data Description

We use four main sources of data. First, for all household-level survey data we rely on the American Community Survey (ACS one-year and five-year public use microdata samples [PUMS]), an annual survey conducted by the census of US households. This is the most reliable data source that allows us to jointly analyze a household's homeownership and employment status, financial situation, and demographic situation. We also use census data from 1980, 1990, and 2000 for computing historical homeownership rates in figure 7 (similar to, among others, Acolin, Goodman, and Wachter, forthcoming). Census data is obtained from the Integrated Public Use Microdata Series made available by the Minnesota Population Center at the University of Minnesota (Ruggles et al. 2015).

In the appendix, we also confirm the reported time-series patterns of homeownership using the American Housing Survey (AHS) and the Current Population Survey (CPS)/Housing Vacancy Survey (CPS/HVS), all from the census. The CPS/HVS is a widely cited survey on the aggregate homeownership rate in the United States, but it relies on a much smaller sample than the American Community Survey. As a result, estimates of the homeownership rate in subgroups over time are more reliable using the ACS, which is what we focus on. The appendix shows that, while there are differences in the baseline levels of homeownership between the different samples, our main results hold in all three data sets (ACS, AHS, and CPS/HVS).¹³

Second, we use data from the Home Mortgage Disclosure Act (HMDA) data set, which contains the universe of US mortgage applications in each year. The variables of interest for our purposes are the loan amount, the purpose of the loan (purchase, refinance, or remodel), the action type (granted or denied), the lender identifier, the location of the borrower (state, county, and census tract), and the year of origination. We match census tracts from HMDA to ZIP Codes using the Missouri Census Data Center bridge. This is a many-to-many match, and we rely on population weights to assign tracts to ZIP Codes. We drop ZIP Codes for which census tracts in HMDA cover less than 80% of a ZIP Code's population. With this restriction, we arrive at 27,385 individual ZIP Codes in the data.

Third, we obtain house price data from both the Federal Housing Finance Agency (FHFA) (for state-level house prices) and from Zillow. The ZIP-Code-level house prices are estimated using the median house price for all homes in a ZIP Code as of June of each year. Zillow house prices are available for only 8,619 ZIP Codes in the HMDA sample for this period, representing approximately 77% of the total mortgage origination volume in HMDA.

Fourth, we also use a loan-level data set from LPS that contains detailed information on the loan and borrower characteristics for both purchase mortgages and mortgages used to refinance existing debt. This data set is provided by the mortgage servicers, and we have access to a 5% sample of the data. The LPS data include not only loan characteristics at origination, but also the performance of loans after origination, allowing us to look at ex post delinquency and defaults. One constraint of using the LPS data is that coverage improves over time, so we start the analysis in 2003 when we use this data set. Coverage of the prime market by the LPS data is relatively stable at 60% during this period, but its coverage of the subprime market is lower (at around 30%) at the beginning of the sample and improves to close to 50% at the end of the sample (Amromin and Paulson 2009).

Finally, to look at the role of collateral and loan-to-value in the housing market, we use a data set from CoreLogic (formerly DataQuick) that includes all ownership transfers of residential properties available in deeds and assessors' records over 17 years (from 1996 to 2012) across metropolitan areas in all 50 states. Each observation in the data contains the date of the transaction, the amount for which a house was sold, the size of the first, second, and third mortgages, and an extensive set of characteristics of the property itself.

Table 1
Summary Statistics

	2000	2005	2010	2015
<i>A. Income (median, 2000 dollars)</i>	41,900	40,122	39,385	40,161
	Upper Bound of each Quintile:			
Quintile 1 (lowest income)	18,000	19,000	20,200	22,900
Quintile 2	33,300	36,000	39,000	43,400
Quintile 3	51,400	56,800	61,900	70,000
Quintile 4	80,000	90,000	99,800	112,250
<i>B. Homeowner (%)</i>	66.2	67.5	65.3	63.1
Quintile 1 (lowest income)	43.1	42.5	39.2	38.8
Quintile 2	56.5	57.3	55.4	53.1
Quintile 3	67.0	68.6	66.6	64.0
Quintile 4	77.7	80.0	77.8	75.0
Quintile 5 (highest income)	86.9	89.6	87.6	85.1
<i>C. Percent movers (over last 12 months, %)</i>	7.9	8.2	4.9	5.8
Quintile 1 (lowest income)	6.4	6.6	4.4	4.8
Quintile 2	7.8	7.6	4.6	5.2
Quintile 3	8.4	9.0	5.3	6.0
Quintile 4	8.9	8.7	5.2	6.2
Quintile 5 (highest income)	7.7	8.3	4.7	6.2
<i>D. Housing cost/income (movers, %)</i>	26.2	31.0	28.1	24.9
Quintile 1 (lowest income)	52.3	63.9	60.8	59.4
Quintile 2	32.4	39.5	35.1	32.2
Quintile 3	25.7	31.1	27.4	23.9
Quintile 4	21.0	25.3	22.3	20.0
Quintile 5 (highest income)	17.1	19.7	17.5	15.0
<i>Number of observations</i>	5,663,214	1,245,246	1,397,789	1,496,678

Notes: Data from the 2000 Census and the American Community Survey. Panel A shows the income median per year in 2000 dollars in the first row (real income) and then nominal income upper bound for each income quintile. Panel B shows the percentage of homeowners per year and income quintile. Panel C shows the percentage of homeowners that moved within the last 12 months per year and income quintile. Panel D shows the housing cost as a percentage of income shown for homeowners who moved within the last year.

II. Summary Statistics

We show summary statistics for the 2000 Census and the ACS five-year sample in table 1. The first set of statistics refer to real median income in each sample (2000, 2005, 2010, and 2015), as well as the maximum nominal income for quintiles 1 through 4. The income threshold for households in the lowest quintile is \$18,000 as of 2000, and about \$23,000 as of 2015, both well below half the median income of households in those periods (note, again, that we report real median income; the median

nominal income as of 2015 in the ACS was \$55,000). This is important to keep in mind when we introduce the results on the share of income spent on housing for each income group.

While we discuss the evolution of homeownership rates in much more detail below, this table shows the level of homeownership for each quintile over time. The main takeaway is that homeownership rates sort strongly with income levels. Households in the lowest quintile hover around 40%, those in the second are about 15 percentage points higher, and households at the very top have a homeownership rate that is above 85% in all years in the data since 2000, and reach close to 90% at the peak of the boom.

We also show summary statistics on the share of homeowners that move in the 12 months prior to the survey year. About 8% of homeowners move in each year during the boom period (2000 and 2005), and this drops significantly during the crisis to about 5%. This pattern is generally visible for all income quintiles.

Finally, table 1 shows the average cost of housing as a proportion of household income for homeowners that moved over the last 12 months. Housing costs include, according to the Census Bureau, “payments for mortgages (. . .) (including payments for the first mortgage, second mortgages, home equity loans, and other junior mortgages); real estate taxes; [all] insurance on the property; utilities (electricity, gas, and water and sewer) (. . .). It also includes, where appropriate, the monthly condominium fee for condominiums and mobile home costs.” The average for all homeowners is between 25 and 31% over our sample, with significant variation across income quintiles. Households in the bottom quintile of the income distribution spend over 50% of their income on housing, whereas those at the top are at 20% or below. Variation in the share of income spent on housing tracks the evolution of house prices during this period.

III. Distribution of Purchase Mortgages

We first report a direct measure of the dynamics of purchase mortgage origination between 2001 and 2015. We focus on the 8,619 ZIP Codes for which we have house price information from Zillow, the same sample used in Adelino et al. (2016). We split the sample into quintiles based on the median household income from the IRS in each ZIP Code as of 2002 so that ZIP Codes do not move across quintiles over time.

In 2001, the top quintile of households by income represented approximately 35% of the total purchase mortgage volume originated in the

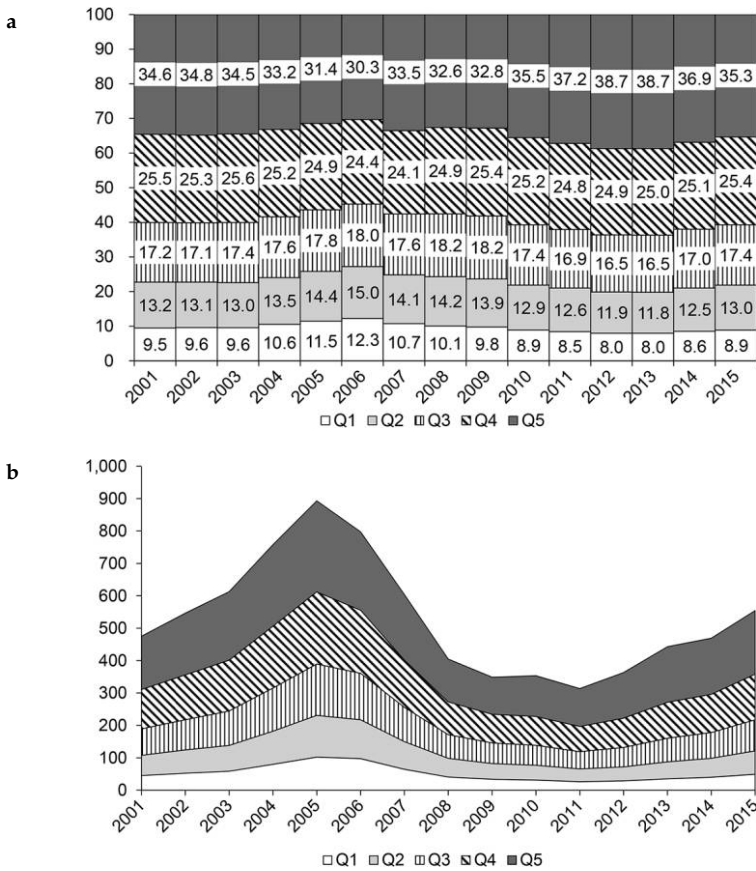


Fig. 1. Distribution of mortgage debt by income quintile

Notes: Panel A shows the fraction of total dollar volume of purchase mortgages by income quintile, and panel B shows the total dollar volume. We use household income from the IRS as of 2002 (i.e., the ZIP Codes in each bin are fixed over time). The cutoff for the bottom quintile corresponds to an average household income in the ZIP Code as of 2002 of \$34,000, the second quintile corresponds to \$40,000, the third quintile corresponds to \$48,000, and the fourth quintile corresponds to \$61,000. Sample includes 8,619 ZIP Codes described in the “Data and Summary Statistics” section. Panel A: Share by income quintile (IRS ZIP Code income). Panel B: Total volume by income quintile (in USD billions).

United States (figure 1). The top two quintiles made up 60% of the total, while the bottom quintile accounted for less than 10%. As the housing boom progresses, the share of the bottom three quintiles increases, especially in 2004–2006, to a peak of 47% in 2006 (from 40% at the beginning of the period). This increase is shared across the bottom three

quintiles and is not concentrated in the poorest households. This trend reverses in 2006, when the share of the top ZIP Codes by income starts expanding significantly. This is especially pronounced for the top quintile of the distribution, where the share of purchase mortgages goes from 30.3% in 2006 to 38.7% in 2012 and 2013. All bottom three quintiles suffer a reduction in approximately equal proportions. This is consistent with other evidence on the contraction of mortgage credit to low-income households described in the literature (including, among many others, the quarterly Federal Reserve Bank of New York's Household Debt and Credit Reports). Panel B shows the pronounced increase and decrease in overall volume of purchase mortgage origination during this period for the 8,619 ZIP Codes in our data. Figure A2 in the appendix shows that the distribution of purchase mortgage was also stable across the FICO score distribution.¹⁴

In table 2 we show that the growth in mortgage lending between 2002 and 2006 is strongly driven by house price movements, and much less so by variation in the fraction of loans that were made by subprime lenders as of 2002. To show this, we sort ZIP Codes into quartiles based on the fraction of loans in a ZIP Code that are originated by subprime lenders as of 2002 (based on the US Department of Housing and Urban Development [HUD] subprime lender list), as well as the house price growth in the ZIP Code between 2002 and 2006.¹⁵ This allows us to consider the separate roles of the presence of subprime lenders (as a measure of aggressive supply of mortgages) and house prices in the growth in mortgage origination in the 2002–2006 period. In panel C we show that the house price dimension is much more important for explaining the growth in total mortgage origination than the share of lending done by subprime lenders.

IV. Stock of Debt

The distribution of purchase mortgage could potentially tell us an incomplete story of the *stock* of household leverage if households across income groups (a) differentially retire or refinance existing debt, (b) increase the speed at which they buy and sell houses (churn), or (c) change the likelihood of entering into homeownership. Figure 2 uses data from the Survey of Consumer Finances tracking the entire stock of mortgage debt, including purchase mortgages, second liens, and other home equity lines. It shows that the stock of DTI at the household level increased proportionally across the whole income distribution.

Table 2

Summary Statistics by House Price Growth and Subprime Origination

A. Distribution of ZIP Codes				
	Low HP Growth	2	3	High HP Growth
Low subprime	535	651	646	338
2	639	610	522	398
3	583	604	484	483
High subprime	435	351	539	801
B. Fraction of Total Purchase Mortgages Originated by Subprime Lenders (as of 2006)				
	Low HP Growth (%)	2 (%)	3 (%)	High HP Growth (%)
Low subprime	3.8	3.8	3.8	4.3
2	8.0	8.0	8.1	8.0
3	12.6	12.4	12.5	12.7
High subprime	22.8	22.1	23.3	26.1
C. Annualized Growth in Total Purchase Mortgage Origination				
	Low HP Growth (%)	2 (%)	3 (%)	High HP Growth (%)
Low subprime	7.1	11.3	10.2	14.8
2	7.5	11.0	12.1	15.3
3	7.2	12.1	13.2	17.9
High subprime	8.1	13.6	15.9	18.2

Notes: This table shows descriptive statistics by ZIP Code split by quartiles of the proportion of purchase mortgages originated by subprime lenders (subprime lenders are defined by the HUD subprime lender list), as well as quartiles of house price growth between 2002 and 2006. Panel A shows the number of ZIP Codes associated to each subprime/house price growth cell. Panel B shows the fraction of subprime lenders with respect to all mortgages originated in 2006 in that particular cell. Panel C shows the mortgage growth between 2002 and 2006 within each cell. Data from HMDA, and the sample includes ZIP Codes with nonmissing house price data from Zillow.

V. Housing Costs

We next focus on the sample of movers in the American Community Survey (ACS) and show that the cost of owning a home increases for all quintiles during the housing boom and that it closely tracks the evolution of house prices (figure 3). We use housing costs as a percentage of income for recent movers as our measure of debt burden. We focus on recent movers to proxy for individuals that recently obtained a new mortgage to avoid confounding what happens with the stock of homeowners with the flow of new credit. Housing costs in the ACS include mortgage

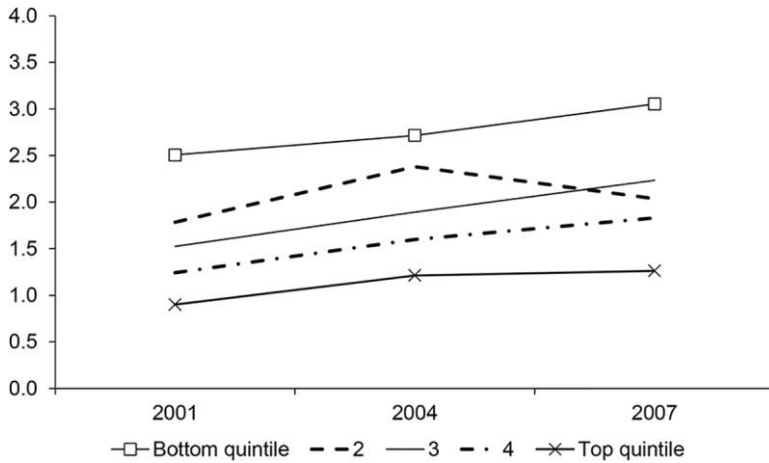


Fig. 2. Mortgage-related DTI by income level

Notes: The figure shows the value-weighted mean DTI of households in the Survey of Consumer Finances. DTI is defined as the ratio of all mortgage-related debt over annual household income. The sample includes households with positive mortgage debt. As of 2004, the cutoff for the bottom quintile corresponds to an annual household income of \$25,300, the second quintile corresponds to \$44,300, the third quintile corresponds to \$69,700, and the fourth quintile corresponds to \$112,700. Mortgage-related debt includes SCF items *MRTHEL* (Mortgage and Home Equity Loan, Primary Residence) and *RESDBT* (Other residential debt). This figure appears originally in Adelino et al. (2016).

payments and any other costs associated with owning a home (taxes, insurance, and utilities, among others). Figure 3 shows the evolution of housing costs for the top four quintiles¹⁶. The increase in housing costs is somewhat higher for the second quintile (at about 6 percentage points) between 2001 and 2006, and it is about 2–4 percentage points for the other groups. This cost drops significantly for all income groups starting in 2006, and in all cases is below the 2001 level by the end of the sample period (2015). One caveat to this analysis is that we cannot control for changes in the geographic composition of the sample in each income quintile. If areas with different housing costs increase or decrease their weight in the sample of movers over time (which likely happens over the house price cycle), this can change the interpretation of the results.

For comparison, panel B shows the cost of renting a home for recent movers. The cost of renting increased consistently throughout the whole sample period, including during and after the financial crisis, for all income quintiles in the data. Panel C shows the difference between the costs of owning and renting. The gap in cost for the second income quintile starts at zero, meaning that recent movers spent the same fraction of

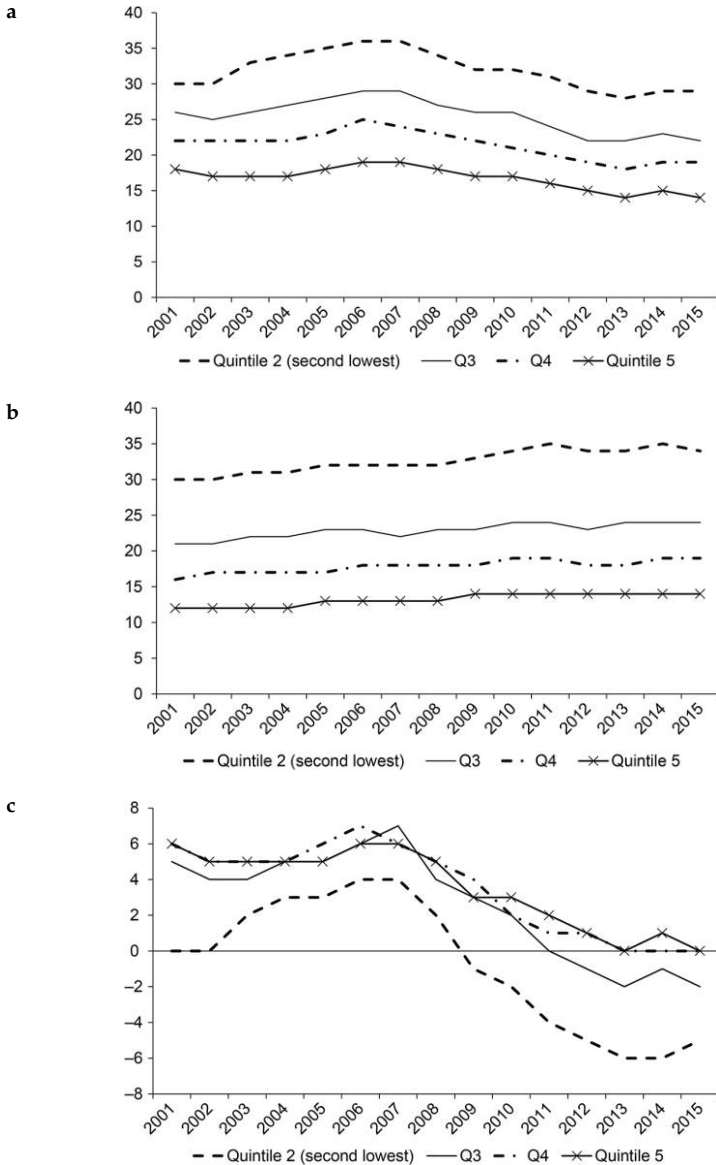


Fig. 3. Annual housing cost as a percentage of income (recent movers)

Source: Data from the American Community Survey.

Notes: Figure shows the evolution of median housing costs by household income quintile. Recent movers are defined as those who bought a home within the last year. Housing costs in the ACS include mortgage payments and any other costs associated with owning a home (taxes, insurance, utilities, among others). Costs are shown as a percentage of household income. The same plots including the first quintile are in figure A3. Panel A: owners; panel B: renters; panel C: difference between the cost of owning and renting.

income on housing irrespective of whether they owned or rented. This gap increases to 4% of income at the peak of the boom, and then drops by a full 10% of income by 2013, consistent with a model in Kaplan, Mitman, and Violante (2016). For the top 60% of households, ownership is associated with a higher cost of housing (by about 4–5 percentage points). This increases slightly by the peak of the boom, and then drops in the bust, to where the cost of owning and renting is the same within each bin.

Figure 4 shows these patterns broken out by states with above and below median house price appreciation. Overall, the message from this figure is that the patterns from the previous figure are significantly more pronounced for areas with a larger boom-bust cycle. Panel A shows that households in quintiles 2 and 3 experience an increase of about 8 percentage points in the cost of housing as a share of income during the housing boom. Quintile 4 has an average increase of 6 points, and the highest quintile of about 4 points. In contrast, panel B shows smaller increases for all groups of households in states with smaller house price increases, as well as smaller reductions in the crisis.

Table 3 shows regressions of the household-level cost of owning a home on a linear time variable (“year”), as well as its square. All regressions control for age and the number of children, as well as state fixed effects. We see a large increase in the burden of housing for all income quintiles, but the results show significantly different patterns for quintiles 3 through 5 during this time period. The difference in the predicted values from this regression amounts to about 1–2 percentage points per quintile at the very peak of the boom. These differences completely disappear at the end of the sample, consistent with the patterns in figures 3 and 4. Columns (2) and (3) split the sample into “boom” and “nonboom” states, and we see that quintiles 1 through 3 are relatively homogeneous in their behavior in boom states, and that quintiles 4 and 5 exhibit statistically different patterns.

VI. Value of Housing as a Proportion of Income

We next consider the evolution of the value of homes as a proportion of household income (the value-to-income ratio). We use value-to-income ratio rather than the debt-to-income ratio because data on mortgage balance is not available in the American Community Survey. However, in light of the evidence provided in the next section about the stability of the proportion of housing that was financed with debt, particularly over the boom, and especially for low-priced homes, it is reasonable to

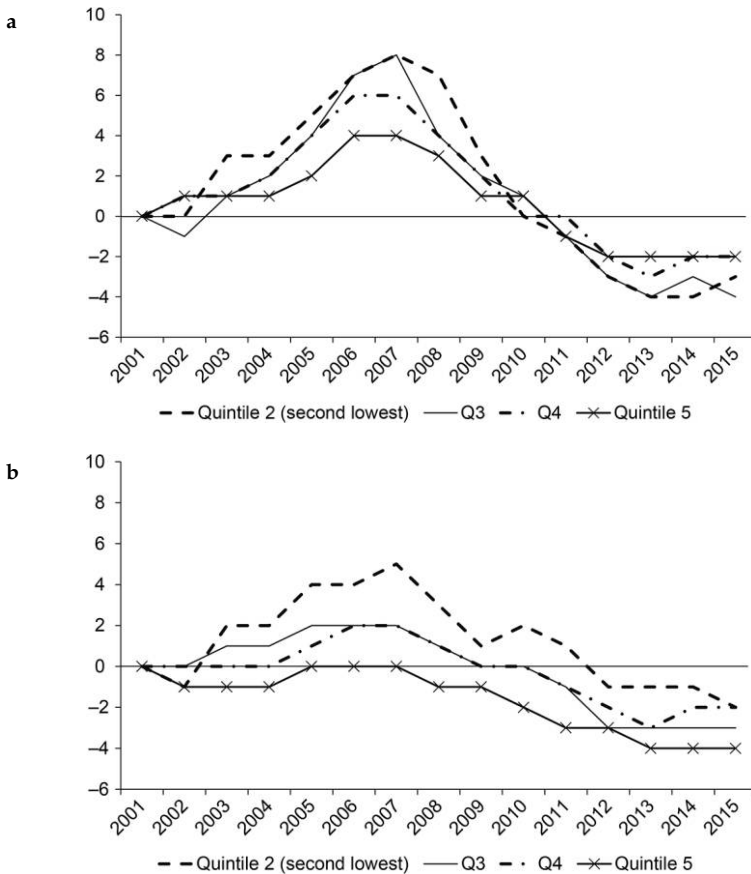


Fig. 4. Change in housing cost as a percentage of income (recent movers, owners only)

Source: Data from the American Community Survey.

Notes: Figure shows the change in median housing costs by household income quintile. Recent movers defined as those who bought a home within the last year. Housing costs in the ACS include mortgage payments and any other costs associated with owning a home (taxes, insurance, utilities, among others). Costs are shown as a percentage of household income. Panel A: “boom” areas (above median state HPA); panel B: “nonboom” areas (below median state HPA).

assume that debt to income followed a similar path to value to income. We calculate the value to income for households that purchased a home in the previous 12 months. This avoids confounding the stock of households with the flow of purchases, and provides a better picture of the availability of credit and the decisions made by both financial institutions and households.

Table 3
Housing Cost as a Percentage of Income (Movers Only)

	All	Boom	Nonboom
Year	2.5186*** 0.4910	3.1746*** 0.4513	2.0464** 0.5614
Year ²	-0.1635*** 0.0338	-0.2041*** 0.0322	-0.1343** 0.0365
Quintile 2 × year	-0.1164 0.1359	0.2980 0.1624	-0.3280 0.3460
Quintile 2 × year ²	-0.0116 0.0090	-0.0476** 0.0113	0.0091 0.0211
Quintile 3 × year	-0.6143* 0.2442	-0.1687 0.3375	-0.9643* 0.3728
Quintile 3 × year ²	0.0200 0.0167	-0.0120 0.0258	0.0450 0.0234
Quintile 4 × year	-0.9986** 0.2460	-0.8833*** 0.1997	-1.1932* 0.4325
Quintile 4 × year ²	0.0473** 0.0154	0.0364* 0.0130	0.0625* 0.0258
Quintile 5 × year	-1.4978*** 0.3026	-1.6875*** 0.2285	-1.5685** 0.4044
Quintile 5 × year ²	0.0805** 0.0192	0.0894*** 0.0126	0.0870** 0.0255
Age + children controls	Y	Y	Y
Quintile dummies	Y	Y	Y
State F.E.	Y	Y	Y
Number of obs.	526,480	245,588	280,892
R ²	0.4	0.38	0.42

Note: Data from the American Community Survey. Boom areas defined as states with above median growth in house prices. Weighted OLS regressions using ACS weights.

***Significant at the 1 percent level.

**Significant at the 5 percent level.

*Significant at the 10 percent level.

Value to income increased for households across the whole income distribution (figure 5). The average increase is the same for all households above the 20th percentile up to 2005, and 2006 shows a somewhat larger increase for the second quintile than for the rest of the households. A similar pattern emerges when we focus only on the states with above median increases in house prices, where the 2005–2006 increase is particularly pronounced for the second quintile than for the rest, but where otherwise both the run-up and the fall in the ratio of housing to income is similar for all quintiles. Panel B also shows that the cycle in this ratio is much stronger in high house price appreciation areas, consistent with

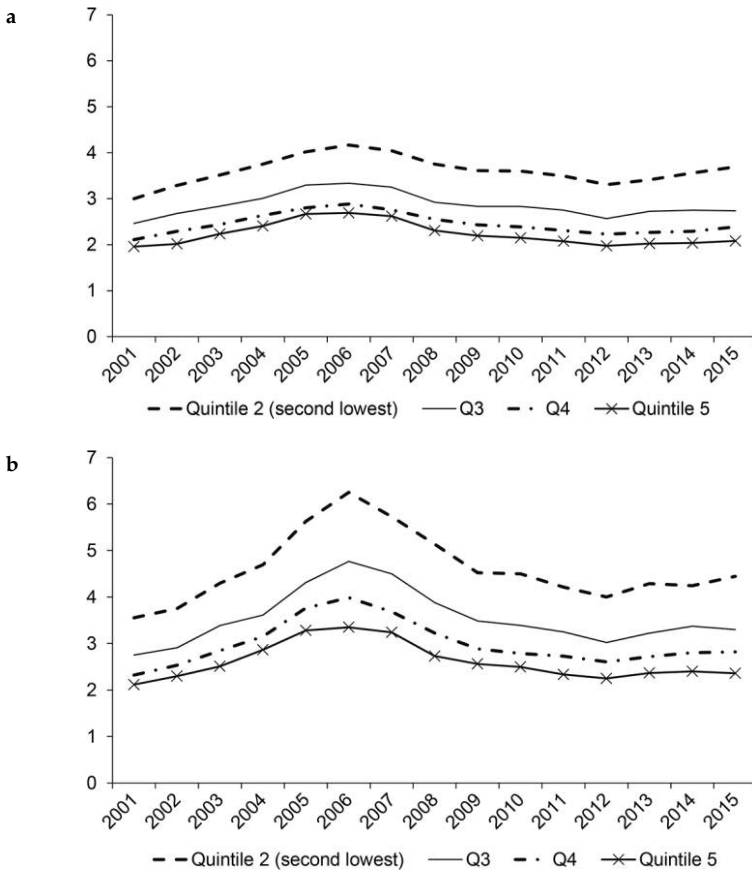


Fig. 5. House value-to-income ratio (recent movers)

Source: Data from the American Community Survey.

Note: Figure shows the change in median value of homes as a share of household income by income quintile. Recent movers defined as those who bought a home within the last year. Income quintiles 2–5 shown. Panel A: all states; panel B: “boom” areas (above median state HPA).

the evidence in figures 3 and 4 on the cost of owning homes. We show the value-to-income ratio for households in the bottom quintile in figure A4 in the appendix. The burden of housing for the lowest-income households is clearly much higher than that of the top 80%, but the general pattern again closely tracks the variation in house prices.

Table 4 performs a regression analysis that is similar to table 3, but using the value of housing as a proportion of income as the dependent variable. Similar to the regressions in table 3, we again see a strong

Table 4
House Value a Percentage of Income (Movers Only)

	All	Boom	Nonboom
Year	0.5740**	1.0866***	0.3009*
	0.1627	0.2019	0.1094
Year ²	-0.0376**	-0.0705***	-0.0198*
	0.0120	0.0153	0.0080
Quintile 2 × year	-0.0700	-0.2094*	-0.0404
	0.0493	0.0707	0.0485
Quintile 2 × year ²	0.0048	0.0130*	0.0033
	0.0033	0.0052	0.0034
Quintile 3 × year	-0.2263**	-0.4606***	-0.1642*
	0.0682	0.0879	0.0609
Quintile 3 × year ²	0.0139**	0.0283***	0.0102
	0.0042	0.0054	0.0048
Quintile 4 × year	-0.2821**	-0.6103***	-0.1710*
	0.0858	0.1137	0.0653
Quintile 4 × year ²	0.0177**	0.0381***	0.0108*
	0.0054	0.0073	0.0049
Quintile 5 × year	-0.3356*	-0.7402***	-0.1898*
	0.1154	0.1532	0.0638
Quintile 5 × year ²	0.0211*	0.0468***	0.0116*
	0.0070	0.0102	0.0048
Age + children controls	Y	Y	Y
Quintile dummies	Y	Y	Y
State F.E.	Y	Y	Y
Number of obs.	515,866	240,279	275,587
R ²	0.25	0.25	0.23

Note: Data from the American Community Survey. Boom areas defined as states with above median growth in house prices. Weighted OLS regressions using ACS weights.

***Significant at the 1 percent level.

**Significant at the 5 percent level.

*Significant at the 10 percent level.

boom and bust cycle that coincides with house price movements. The predicted values from the regression again show that there is a large increase in the multiple of house value over income for all households, with a particularly strong cycle for quintiles 1 and 2. This is especially pronounced for boom states (column [2]).

VII. Homeownership

We next turn to the evolution of homeownership rates during the housing boom and bust. Homeownership rates provide a good measure of

the net effect of the expansion of mortgage credit to different households over time (see also Foote, Loewenstein, and Willen 2016). To the extent that credit availability increased for certain groups in the population, we would expect those groups to switch at a higher rate from renting into owning, particularly in the case of groups with lower average homeownership rates. We calculate homeownership rates as the number of households who own their home as a share of all households in each income quintile. The data comes from the American Community Survey one-year surveys, and it covers the 2001 to 2015 period.

Households in the bottom quintile experienced a reduction in homeownership rates during the whole period between 2001 and 2015 (figure 6, panel A, shows the evolution of homeownership for all quintiles of the income distribution). The increase in homeownership rates is almost monotonically increasing in income in the period before the crisis. In fact, households between the 20th and the 40th percentiles experienced a noticeably smaller increase in homeownership rate than all three quintiles above. The cumulative change in the homeownership rate is about 1 percentage point for the second quintile, whereas it peaks at 2–2.5% for quintiles 3 through 5. Panel A includes all states, panel B focuses on states with above median increases in house prices, and panel C restricts the sample to just the four “sand states” (Arizona, California, Florida, and Nevada), where the housing boom was particularly pronounced.

The crisis and recession period is clearly associated with an overall reduction in the rate of homeownership. Our analysis shows that the reduction was widely shared across the income distribution. The lowest-income households experience a very strong reduction that starts in 2006 and flattens out by 2011. All other quintiles experience a steadily lower homeownership rate that undoes the whole increase of the boom and ends up 2–3 percentage points below their level in 2001 by the year 2015.

Panel B shows that states with rapid house price appreciation experienced similar moves in homeownership rates as other states. Specifically, households in the lower two income quintiles seem to have generally smaller increases before the crisis, and a significant reduction in homeownership rates after the crisis. It is notable, however, that the three top quintiles show a fast reduction in the rate of homeownership after the housing bust. In panel C, we find generally similar patterns as before.

In order to verify the robustness of the overall patterns shown in figure 6, we turn to the American Housing Survey (AHS) and the Current

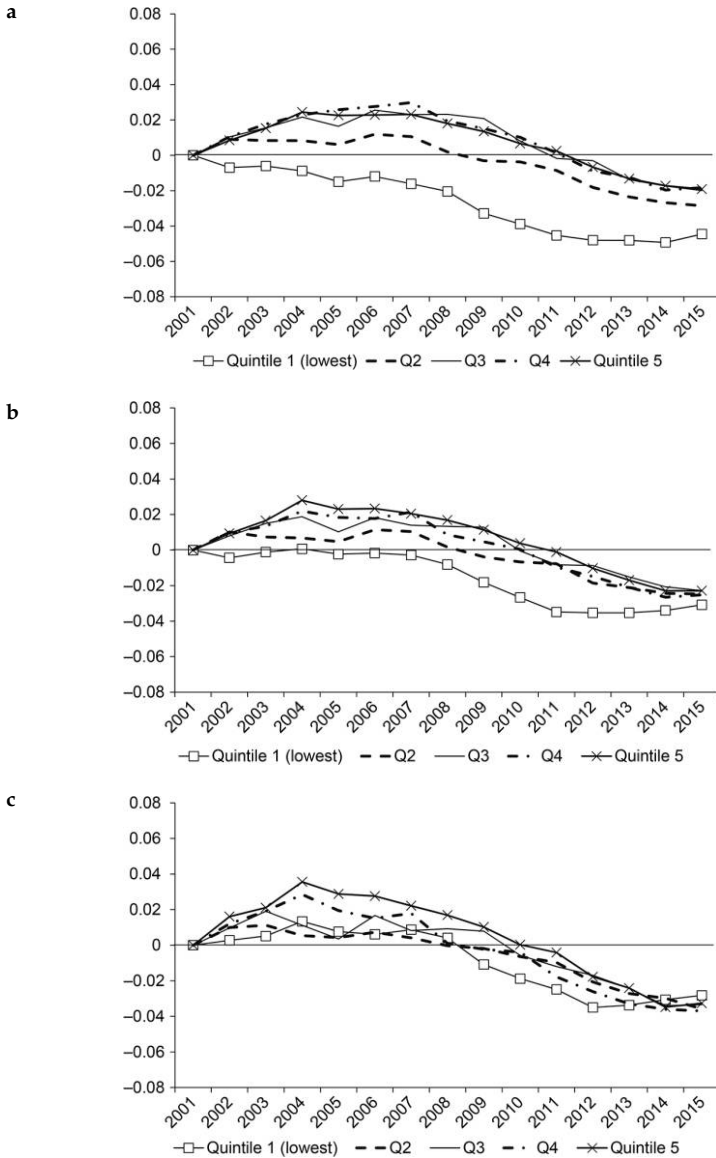


Fig. 6. Cumulative change in homeownership rate

Notes: Figure shows the share of homeowners within each household income quintile in the American Community Survey one-year public use microdata sample. Homeownership rate is calculated as the share of owner-occupied homes over the total number of occupied homes.

House price appreciation is measured between 2001 and 2006. Panel A: all states; panel B: “boom” areas (above median state HPA); panel C: sand states (AZ, CA, FL, NV).

Population Survey/Housing Vacancy Survey (CPS/HVS) and perform the same analysis.¹⁷ We show those results in figure A5 in the appendix. Both the AHS and the CPS/HVS show smaller cumulative increases in the rate of homeownership for households with below median income before the crisis, and large drops after 2007–2008. These results are also consistent with the evidence in Foote, Loewenstein, and Willen (2016), who use the Survey of Consumer Finances and find no evidence that increases in homeownership were concentrated in low-income or marginal borrowers.

Table 5 shows regressions of homeownership status at the individual level on a linear and a quadratic time variable (“year”), as well as interactions of the years with each quintile. Figure A6 shows a plot of the predicted values of this regression for ease of interpretation. These regressions include age of the head of household and the number of children as controls, as well as state fixed effects. The coefficients show that the increase in homeownership rate is significantly higher for quintiles 3 through 5 relative to quintiles 1 and 2. The quadratic term is also significantly different for quintiles 2 through 5 relative to the lowest-income households, which closely mirrors the evidence shown in figure 6. Columns (2) and (3) show that the differences across groups stem mostly from nonboom states. In fact, we find that only quintiles 4 and 5 are significantly different (with larger increases in the boom) in the boom states relative to the lowest income quintile. Panel B reruns the same specification as in the regressions described above, but we form income quintiles within states rather than for the full (pooled) sample. The conclusions are the same as in panel A.

Figure 7 shows a longer time series using data from the decennial census in 1980, 1990, and 2000, combined with American Community Survey five-year PUMS data for 2005–2015. The five-year ACS samples produce more reliable estimates in subgroups than the one-year samples, but they are only available starting in 2005, which is why we use the one-year samples for our year-by-year estimates above.¹⁸ Panel A shows that there was a significant increase in homeownership rates overall in the 1990s, more so than during the 2000–2005 period. The postcrisis period was associated with a large drop in homeownership rates in the United States. Panel B confirms the results using the one-year ACS data in figure 6 for the post-2000 period, and it also shows that households in quintiles 2 through 5 had already experienced a large increase in homeownership during the 1990s.

Table 5
Homeownership Rate by Quintiles over Time

Panel A. Pooled Income Quintiles			
	All	Boom	Nonboom
Year	-0.0019	0.0006	-0.0035
	0.0020	0.0030	0.0020
Year ²	-0.0001	-0.0002	0.0000
	0.0001	0.0002	0.0001
Quintile 2 × year	0.0062**	0.0029	0.0087***
	0.0016	0.0025	0.0018
Quintile 2 × year ²	-0.0004***	-0.0002	-0.0005***
	0.0001	0.0002	0.0001
Quintile 3 × year	0.0113***	0.0056	0.0157***
	0.0023	0.0033	0.0023
Quintile 3 × year ²	-0.0007***	-0.0004*	-0.0010***
	0.0001	0.0002	0.0001
Quintile 4 × year	0.0121***	0.0065	0.0169***
	0.0025	0.0039	0.0026
Quintile 4 × year ²	-0.0008***	-0.0005*	-0.0011***
	0.0001	0.0002	0.0001
Quintile 5 × year	0.0109***	0.0082*	0.0129***
	0.0022	0.0036	0.0019
Quintile 5 × year ²	-0.0007***	-0.0006*	-0.0008***
	0.0001	0.0002	0.0001
Age + children controls	Y	Y	Y
Quintile dummies	Y	Y	Y
State F.E.	Y	Y	Y
Number of obs.	13,803,090	6,558,031	7,245,059
R ²	0.19	0.19	0.19
Panel B. Income Quintiles Formed within Each State			
	All	Boom	Nonboom
Year	-0.0014	0.0017	-0.0043
	0.0022	0.0034	0.0021
Year ²	-0.0001	-0.0003	0.0000
	0.0001	0.0002	0.0001
Quintile 2 × year	0.0059**	0.0051	0.0067**
	0.0017	0.0026	0.0020
Quintile 2 × year ²	-0.0004**	-0.0003	-0.0004**
	0.0001	0.0002	0.0001
Quintile 3 × year	0.0097**	0.0054	0.0136***
	0.0025	0.0040	0.0031
Quintile 3 × year ²	-0.0007***	-0.0004	-0.0009***
	0.0001	0.0002	0.0002
Quintile 4 × year	0.0119***	0.0075	0.0159***
	0.0027	0.0045	0.0030

(continued)

Table 1
Continued

	All	Boom	Nonboom
Quintile 4 × year ²	-0.0008*** 0.0001	-0.0006* 0.0003	-0.0010*** 0.0002
Quintile 5 × year	0.0107*** 0.0022	0.0074 0.0042	0.0137*** 0.0015
Quintile 5 × year ²	-0.0007*** 0.0001	-0.0006* 0.0003	-0.0008*** 0.0001
Age + children controls	Y	Y	Y
Quintile dummies	Y	Y	Y
State F.E.	Y	Y	Y
Number of obs.	13,803,090	6,558,031	7,245,059
R ²	0.19	0.19	0.19

Source: Data from the American Community Survey.

Note: Boom areas defined as states with above median growth in house prices. Weighted OLS regressions using ACS weights. Figure A6 shows fitted values from the regression.

***Significant at the 1 percent level.

**Significant at the 5 percent level.

*Significant at the 10 percent level.

Table A1 in the appendix uses the five-year ACS PUMS sample for the 2005–2014 period as an additional yearly check on the estimates described for figure 6 (obtained with the one-year ACS sample). The table shows that there is a difference of between 0.5% and 1% for 2005 between the homeownership rates obtained in two samples, but no evidence that this is different for the bottom two quintiles relative to the rest. The difference becomes smaller at 0–0.2% for all other years and income quintiles.

These patterns in homeownership rates may seem surprising given the increase in overall mortgage origination during the boom period, including in the number of purchase mortgages (Adelino et al. 2016). Our results show that the increase in mortgage origination in the aggregate during this time period did not lead to greater access to homeownership by individuals at the bottom of the income distribution, and led to relatively modest increases at the middle and the top of the distribution. These results are consistent with Acolin et al. (2017), who show that subprime mortgage use at the county level was not associated with changes in the homeownership rate, including for low-income and minority households.

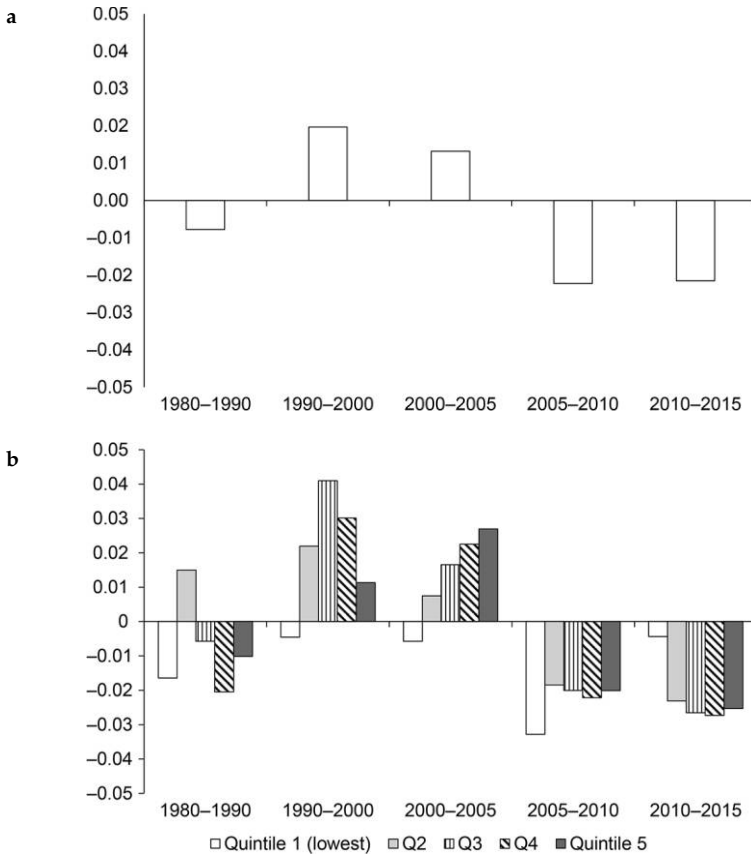


Fig. 7. Change in homeownership rate 1980–2015

Source: Data comes from the Decennial Census for 1980, 1990, and 2000, and from the American Community Survey five-year public use microdata sample for 2005–2015.

Note: Homeownership rate is calculated as the share of owner-occupied homes over the total number of occupied homes. Panel A: all households; panel B: change in homeownership rate by income level.

VIII. Movers and Churn

The evidence on purchase mortgage originations shown in figure 1 is based on ZIP Codes rather than individuals. We use data from the ACS to measure the fraction of homeowners moving homes in each year by income level of households rather than ZIP Codes. We show these results in figure 8. We find that already in 2001 about 8% of households in income quintiles 3 and 4 moved homes in each year. This fig-

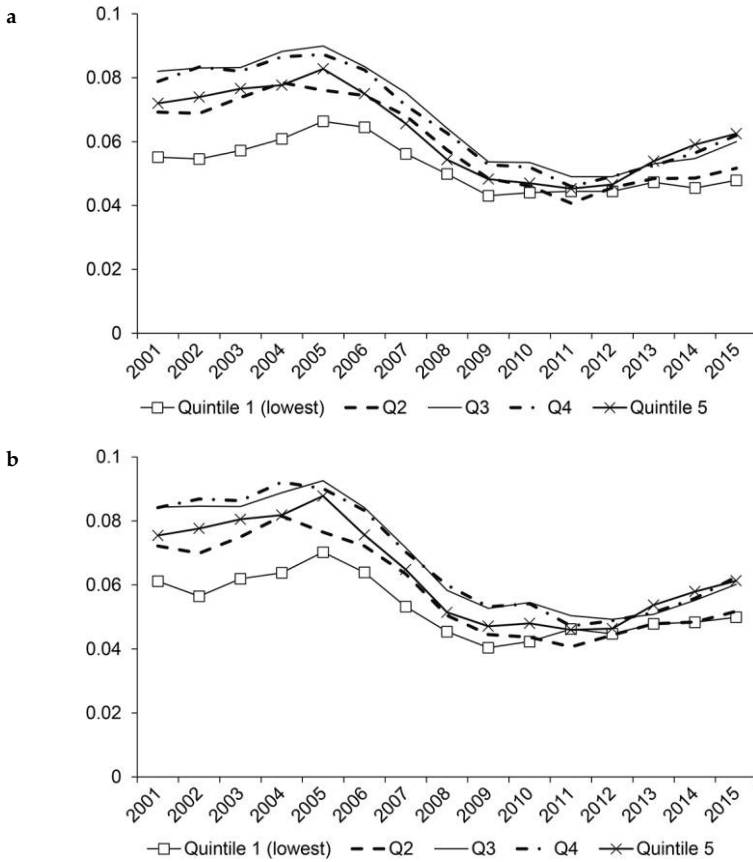


Fig. 8. Share of households moving in the last year (owners only)

Source: Data from the American Community Survey.

Note: Shares within each household income quintile. Panel A: all states; panel B: “boom” areas (above median state HPA).

ure was closer to 7% for quintiles 2 and 5, and just below 6% for the lowest-income households. We observe an increase in the share of movers during the boom, with a peak in 2005 that is close to 1% higher at all income levels.

The housing crisis is associated with a dramatic reduction in the rate of movers in the data, with all quintiles showing an average of between 4 and 5% share of movers per year, with an increase in this rate starting in 2011. Importantly, all income levels seem to move in lockstep in both the boom and the bust, which again runs counter to the idea that the

housing cycle was a phenomenon that was particularly pronounced at the bottom of the distribution. Panel B of figure 8 shows similar evidence for states with above median house price appreciation. Although the shares of movers are slightly higher than those for all states (panel A), all the conclusions hold for high house price appreciation areas and the cycle follows a very similar path.

IX. Loan-to-Value Ratios

We next consider the evolution of combined loan-to-value (LTV) ratios of home purchases using data from deeds records between 2000 and 2012 (from DataQuick, currently CoreLogic). We focus on arm's-length transactions and include first, second, and third liens for computing LTVs.

This analysis means to capture how the debt capacity of housing as an asset class changes over time, and addresses one of the main parameters used in a wide class of models to capture changes in credit constraints. Recent evidence from the Federal Reserve Bank of New York shows the evolution of combined loan-to-value ratios for all households (not just LTVs at origination).¹⁹ We also show the loan-to-value ratio for all households from the Flow of Funds data in figure A7. Both the evidence from the Federal Reserve Bank of New York and the Flow of Funds shows the combined position of US households in terms of home equity and includes the evolution of house prices since a home was purchased, as well as the changes in leverage over time (i.e., the stock of loan-to-value ratios in the economy). These measures include the addition of home equity lines of credit and cash-out refinances, as well as quicker buying and selling of homes (quicker churn) and resetting of mortgages to higher levels. The purpose of the evidence in this section is, instead, to measure the debt capacity of housing over the recent housing cycle.

When we look at the loan-to-value ratios *at origination*, that is, the flow of LTVs of new purchases, we find very small changes over the boom-and-bust cycle across the whole distribution (panel A of figure 9). Panel B shows the evolution of the median LTV for homes at different price levels. Again, as in panel A, these medians are remarkably stable, except for a reduction in LTVs at the peak of the boom for homes between the 25th and 50th percentiles. This evidence is consistent with the work of Justiniano, Primiceri, and Tambalotti (2015) and Ferreira

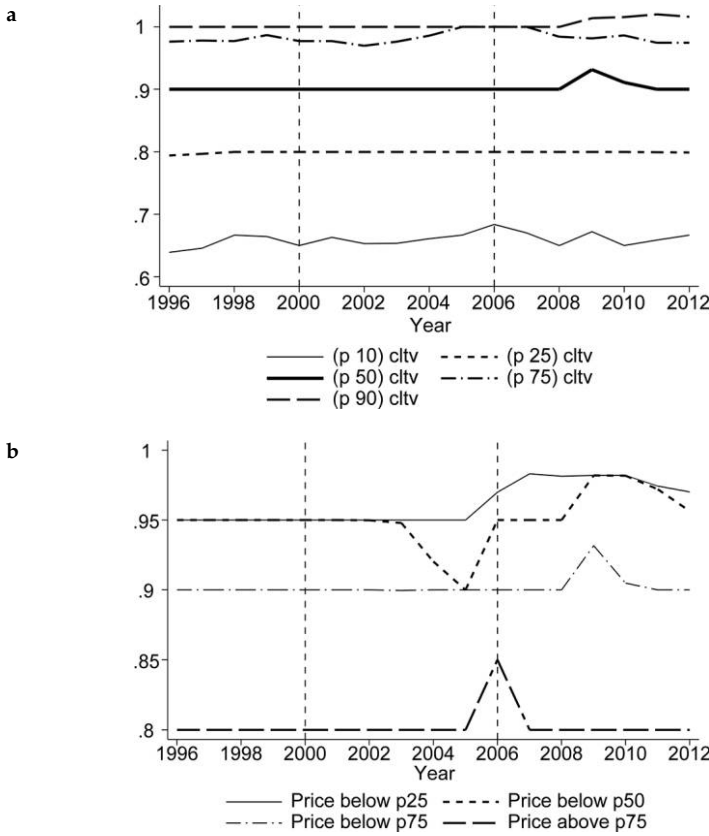


Fig. 9. Combined loan-to-value ration (CLTV) for home purchase by year
 Source: Data comes from CoreLogic (formerly DataQuick).

Note: Sample includes all transactions with positive combined loan to value. Combined loan to value is computed as the sum of the first, second, and third liens taken up to six months after a home purchase transaction. Panel A: all transactions; panel B: median combined loan to value (CLTV) by level of house prices.

and Gyourko (2015), who similarly do not find that LTVs at the time of purchase changed very significantly during the boom. The patterns of CLTV at origination are very similar for states with above and below median house price appreciation during the boom (figure 10). Overall, the evidence on loan-to-value ratios is not consistent with an increase in one of the key parameters associated with a large relaxation of credit constraints, or, put differently, with a significant increase in the debt capacity of homes.

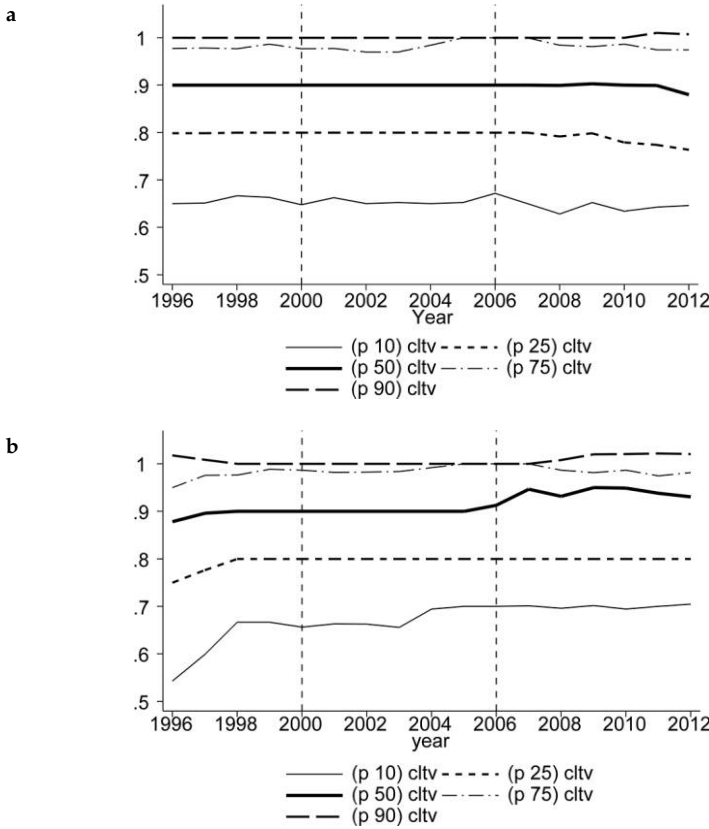


Fig. 10. Combined loan-to-value ratio (CLTV) for boom and nonboom states
 Source: Data comes from CoreLogic (formerly DataQuick).
 Note: Sample includes all transactions with positive combined loan to value. Combined loan to value is computed as the sum of the first, second, and third liens taken up to six months after a home purchase transaction. Boom states are those with above median house price appreciation. Panel A: “boom” areas (above median state HPA); panel B: “nonboom” areas (above median state HPA).

X. Mortgage Defaults during the Bust

We next show that high-credit-score households and high-income households significantly increase their share of overall delinquencies in the crisis. We show the share of delinquencies by income quintile and FICO scores in figure 11. Delinquency is defined as borrowers missing three or more payments within the first three years after origination. Panel A shows the evolution of the share of delinquent mortgages by

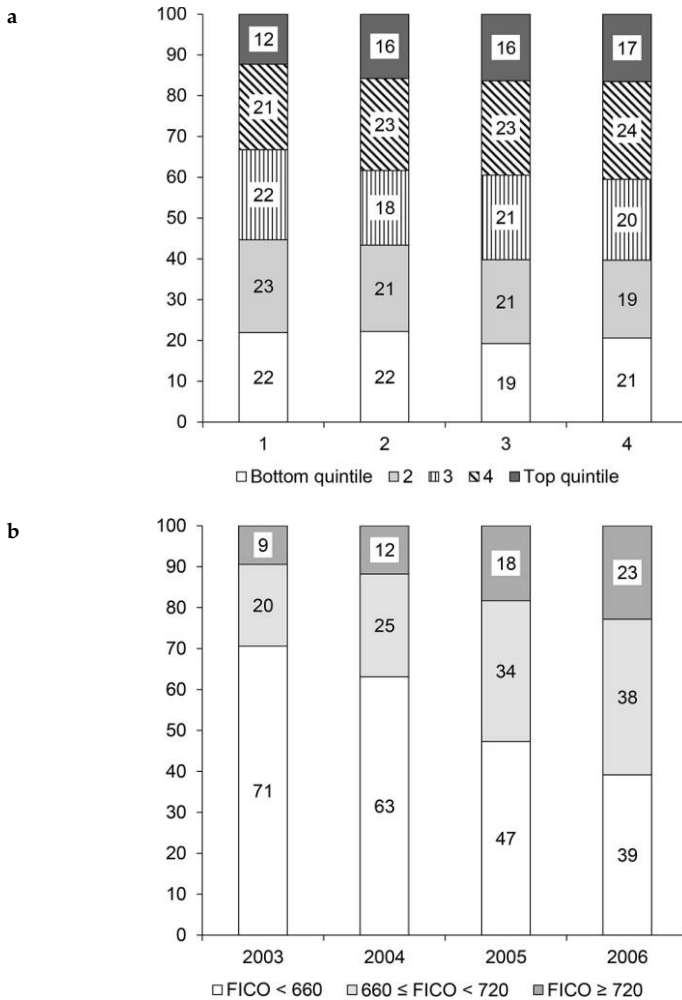


Fig. 11. Mortgage delinquency

Source: Data are from the 5% sample of the LPS (formerly McDash) data set.

Note: Panel A shows the fraction of total dollar volume of delinquent purchase mortgages by cohort, split by ZIP Code income quintile. A mortgage is defined as being delinquent if payments become more than 90 days past due (i.e., 90 days, 120 days, or more in foreclosure or REO) at any point during the three years after origination. We use household income from the IRS as of 2002 (i.e., in all panels ZIP Codes are fixed as of 2002, and cutoffs are the same as those given in figure 1). Panel B shows the fraction of total dollar volume of delinquent purchase mortgages by cohort, split by credit scores. A FICO score of 660 corresponds to a widely used cutoff for subprime borrowers, and 720 is close to the median FICO score of borrowers in the data. This figure appears originally in Adelino et al. (2016). Panel A: IRS 2002 income quintile; panel B: FICO score; panel C: delinquency by house price growth.

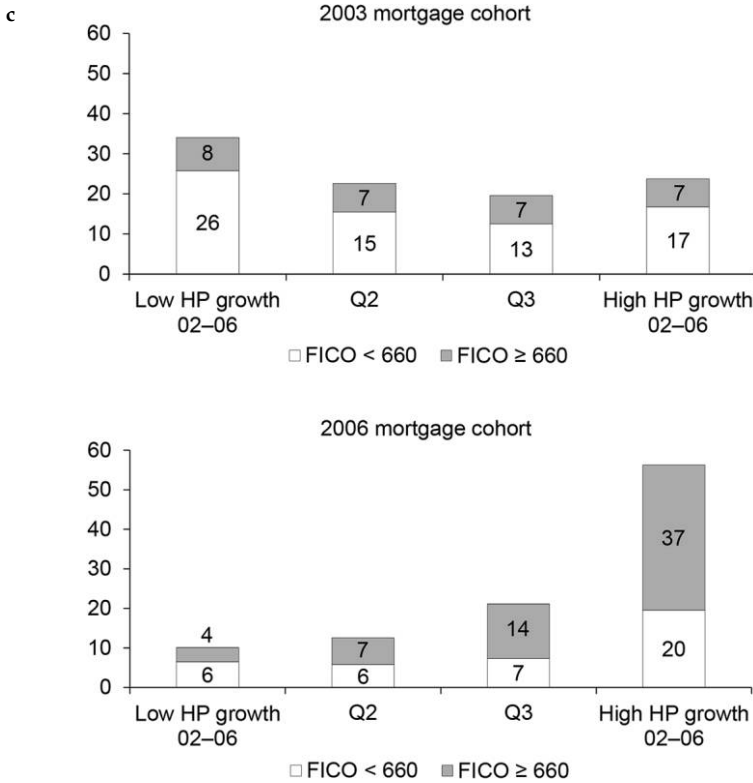


Fig. 11. (continued)

ZIP Code income. Panel B shows the same picture by borrower credit score. Prime borrowers represented 29% of delinquencies over the subsequent three years for the 2003 cohort, but they make up 61% of defaults for loans originated in 2006. Finally, panel C shows that when we split borrowers into areas with high and low house price growth during the boom, we observe that most of the increase in prime delinquencies in 2006 comes from loans originated in areas with high house appreciation, consistent with the important role of house prices for defaults.

XI. Stability of Employment of Recent Movers

As a final test of possible changes in the underwriting standards during the credit boom, we show in figure 12 that households in all quintiles seem to have maintained similar characteristics in terms of the stability

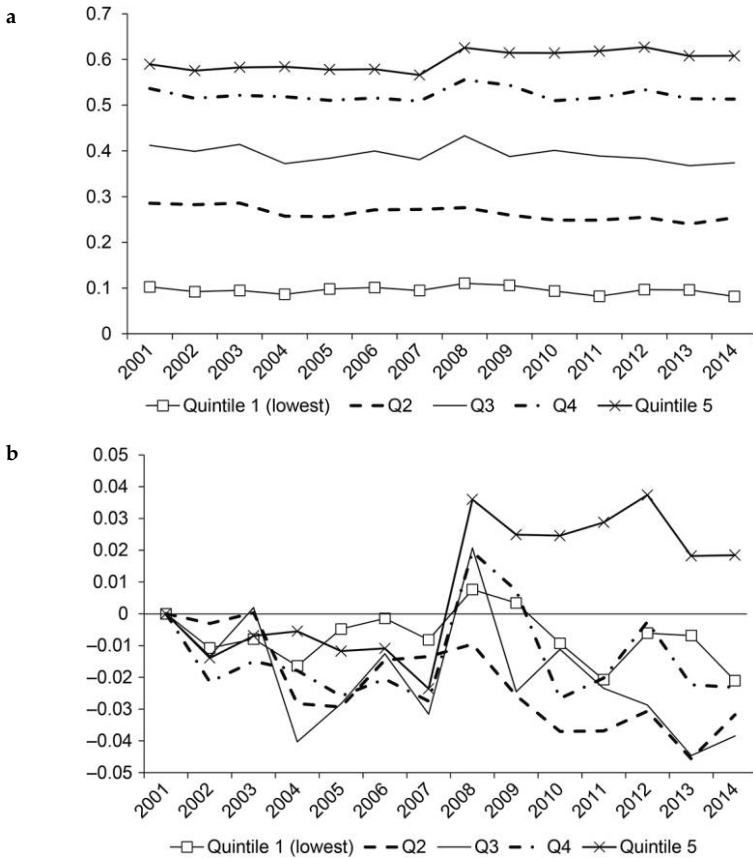


Fig. 12. Stability of employment status (recent movers)

Source: Data from the American Community Survey.

Notes: Figure shows the median share of households who moved in the last 12 months in each income quintile who have stable employment. Stable employment is defined as having at least one full-time employed household member. Panel A: share of recent movers with “stable” employment; panel B: change in share of recent movers with “stable” employment.

of employment over the boom. The boom is associated with a decrease in the number of households that report having at least one household member with full-time employment of about 1–3 percentage points. Importantly, however, this change is common to all income levels, and it is not particularly concentrated in the poorest households. Another way of interpreting these results is that, once we account for household income by binning households into quintiles, this already accounts for

many of the common characteristics of moving households. The mortgage crisis is associated with a sudden spike in the share of households with full-time employment, although this change is short-lived for most groups (with the exception of the highest group).

XII. Conclusion

In sum, a careful review of the major trends in mortgage markets leading up to the 2008 crisis calls into question a one-sided explanation of the events as a subprime crisis. The results presented in this paper support a view of the credit boom where financial institutions and banks bought into increasing house prices because of overly optimistic expectations. The catalyst for the initial changes in mortgage demand and house price growth might have been a drop in interest rates in the early twenty-first century that made home purchases more affordable and may have set off the feedback loop between increased house prices and increased expectations. Credit standards may have then fallen *as a result* of higher house prices, since lenders were willing to rely on collateral values alone in making lending decisions. As our results confirm, the distribution of CLTV levels (for purchase mortgages at origination) stayed stable across the boom period, which suggests that lenders almost mechanically lent against increasing house price values.

Our results also show why it is important to understand the drivers of the crisis. We show that post-2008, credit to lower-income and low-FICO borrowers dropped dramatically and prompted a significant decline in homeownership rates for lower-income households. Seen through the lens of the subprime view, this might have been a welcome change in mortgage markets, since marginal or lower-income groups were screened out. Under the expectations view, however, these facts raise the concern that these changes targeted lower-income households and prevented them from buying houses when prices were historically low, without improving the stability of the mortgage market.

Appendix

Table A1

Comparison of ACS One-Year and ACS Five-year Estimates of Homeownership Rate, 2005–2014

A. ACS One-Year										
	2005	2006	2007	2008	2009	2010	2011	2012	2013	2014
Q1	41.7	42.0	41.6	41.2	39.9	39.3	38.7	38.4	38.4	38.3
Q2	56.6	57.2	57.0	56.2	55.7	55.6	55.1	54.2	53.6	53.3
Q3	67.6	68.5	68.3	68.3	68.0	66.8	65.8	65.7	64.6	64.2
Q4	79.4	79.6	79.8	78.8	78.4	77.9	77.0	76.0	75.6	74.9
Q5	89.2	89.3	89.3	88.8	88.3	87.7	87.2	86.3	85.7	85.3
B. ACS Five-Year										
	2005	2006	2007	2008	2009	2010	2011	2012	2013	2014
Q1	42.5	42.1	41.6	41.2	40.1	39.2	38.6	38.5	38.5	38.4
Q2	57.3	57.2	57.1	56.1	55.7	55.4	54.9	54.1	53.7	53.3
Q3	68.6	68.6	68.3	68.2	68.1	66.6	65.7	65.6	64.6	64.2
Q4	80.0	79.7	80.1	78.8	78.6	77.8	76.9	76.0	75.6	74.9
Q5	89.6	89.2	89.3	88.7	88.3	87.6	87.2	86.3	85.7	85.3
C. ACS Five-Year/ACS One-Year										
	2005	2006	2007	2008	2009	2010	2011	2012	2013	2014
Q1	0.8	0.1	0.0	0.0	0.2	-0.1	-0.1	0.1	0.1	0.1
Q2	0.7	0.1	0.1	-0.1	0.1	-0.2	-0.2	0.0	0.1	0.0
Q3	1.0	0.1	0.0	-0.1	0.0	-0.2	-0.1	0.0	0.0	0.0
Q4	0.5	0.0	0.2	-0.1	0.2	-0.1	-0.1	0.0	0.0	0.0
Q5	0.4	0.0	0.0	-0.1	0.0	0.0	-0.1	0.0	0.0	0.0

Note: The table shows homeownership rates across income quintiles computed using the ACS one-year public use microdata sample (panel A) and the ACS five-year sample (panel B). Panel C shows the difference between the two. Panel A uses the same data as figures 3–7. Five-year estimates are not available pre-2005. For a detailed discussion of the differences between the samples, and the advantages and disadvantages of using each data set, please refer to <http://www.census.gov/programs-surveys/acs/guidance/estimates.html>.

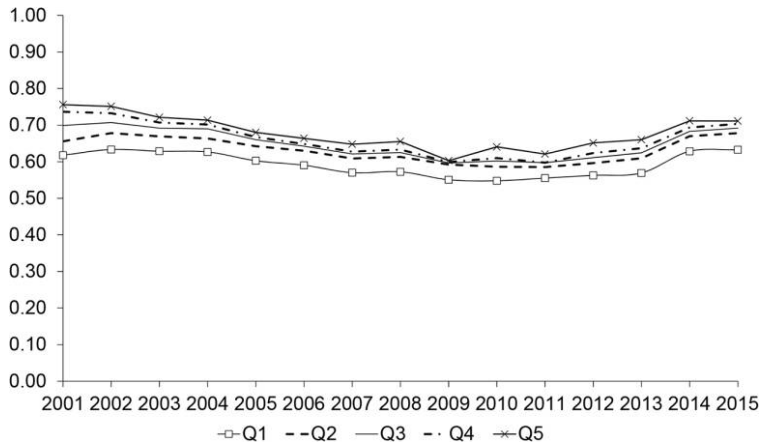


Fig. A1. Mortgage approval rate by income

Notes: This figure shows the fraction of purchase mortgages in the HMDA that are approved each year over the total number of purchase mortgages applications in HMDA split by income quintile. We use household income from the IRS as of 2002 (i.e., the ZIP Codes in each bin are fixed over time). The cutoff for the bottom quintile corresponds to an average household income in the ZIP Code as of 2002 of \$34,000, the second quintile corresponds to \$40,000, the third quintile corresponds to \$48,000, and the fourth quintile corresponds to \$61,000. Sample includes 8,619 ZIP Codes described in the “Data and Summary Statistics” section.

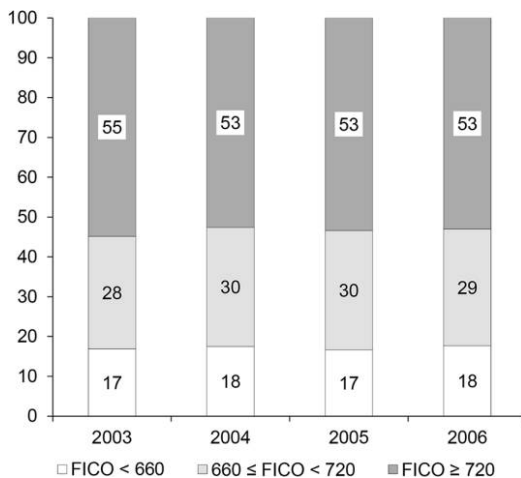


Fig. A2. Mortgage origination by credit score

Notes: This figure shows the fraction of total dollar volume of purchase mortgages in the LPS data split by FICO score. A FICO score of 660 corresponds to a widely used cutoff for subprime borrowers, and 720 is near the median FICO score of borrowers in the LPS data (the median is 721 in 2003, 716 in 2004, 718 in 2005, and 715 in 2006). The sample includes ZIP Codes with nonmissing house price data from Zillow. This figure appears originally in Adelino et al. (2016).

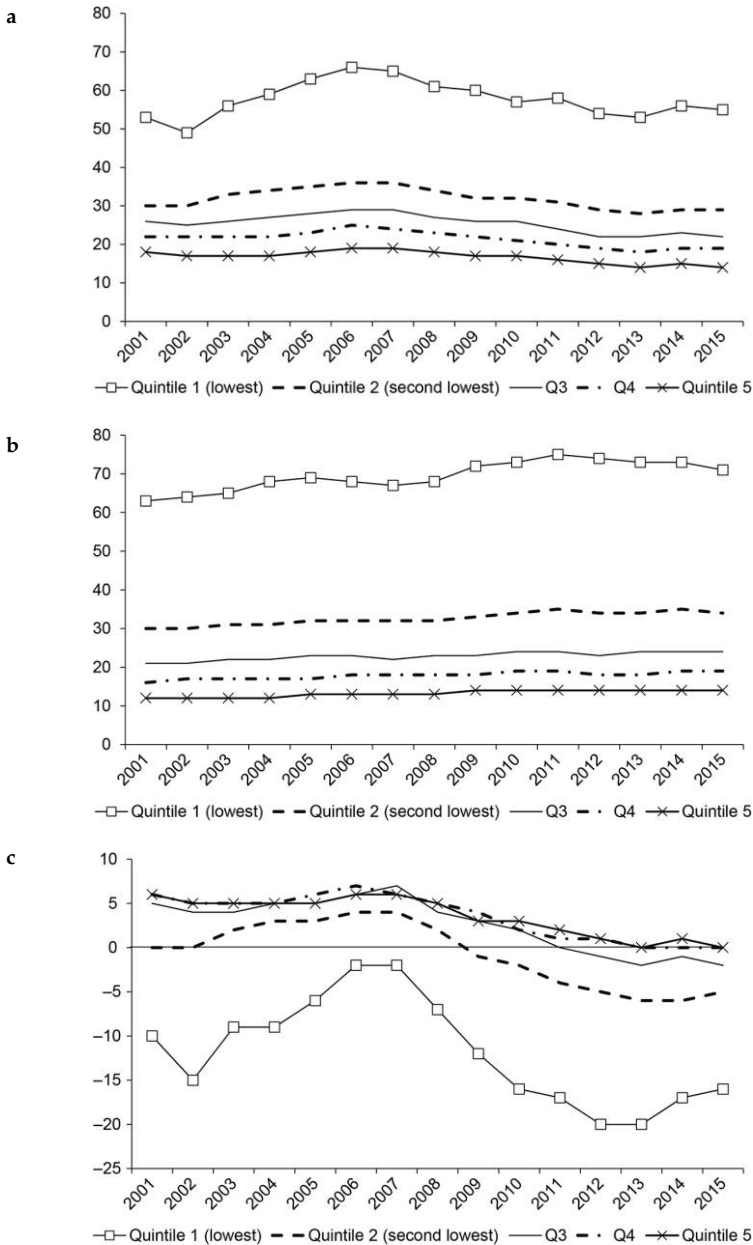


Fig. A3. Distribution of annual housing cost as a percentage of income, recent movers
Source: Data from the American Community Survey.

Note: Medians within each income quintile. Recent movers defined as those who bought a home within the last two years. Income quintiles 1–5 shown. Panel A: owners; panel B: renters; panel C: difference between the cost of owning and renting.

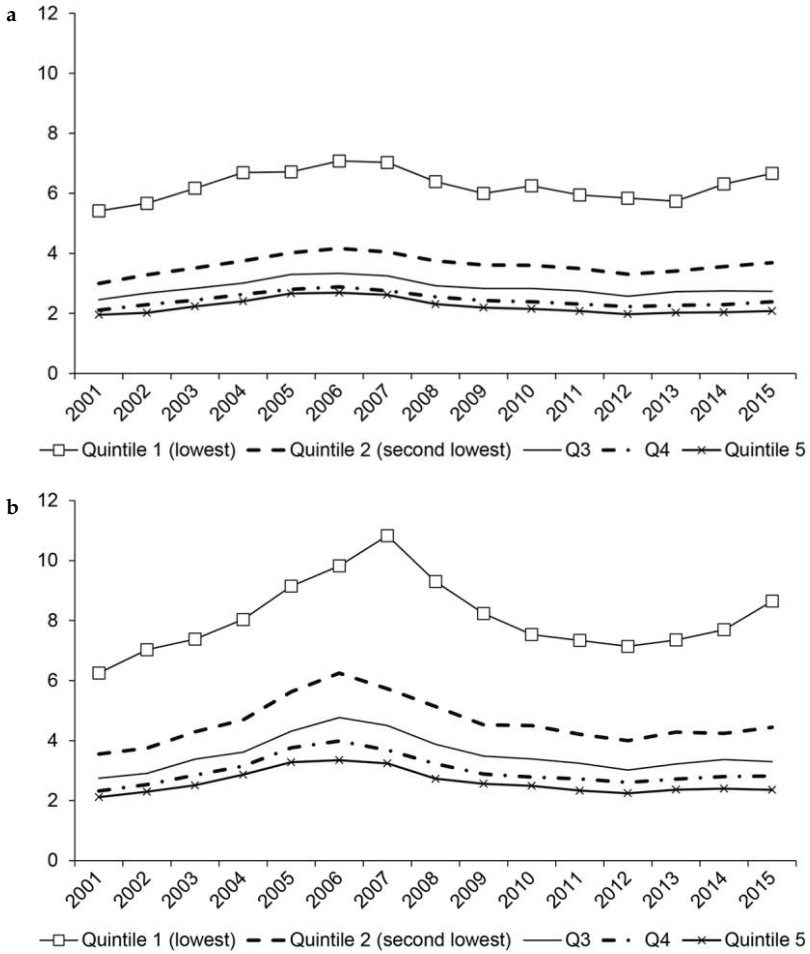


Fig. A4. House value to income

Source: Data from the American Community Survey.

Note: Owners only, recent movers. Medians for each variable. Income quintiles 1–5 shown. Panel A: “boom” areas (above median state HPA); panel B: “nonboom” areas (below median state HPA).

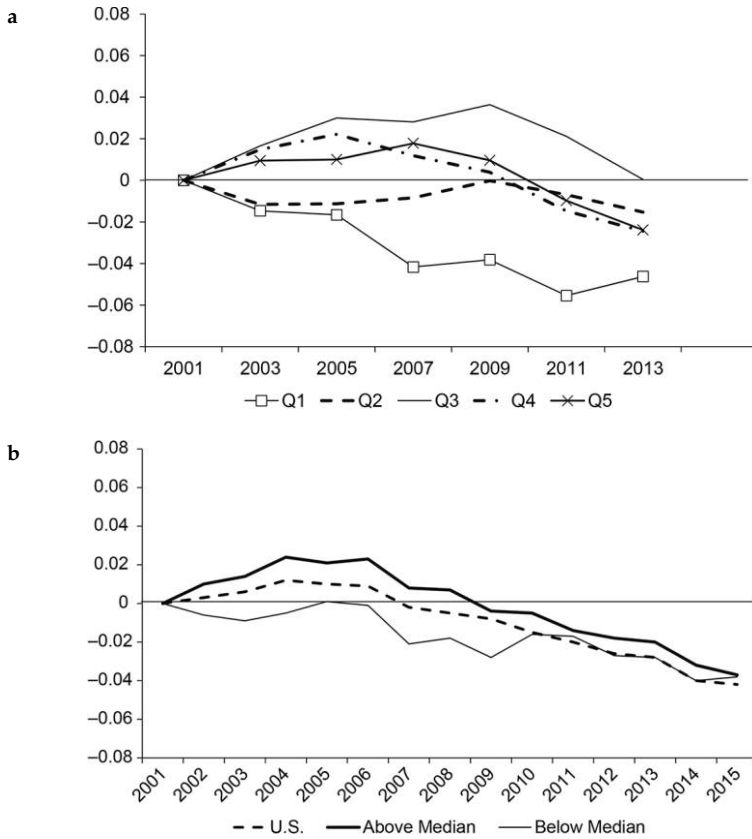


Fig. A5. Change in homeownership rate by income, alternative data sources

Source: Data for CPS/HVS, panels B and C is obtained from <https://www.census.gov/housing/hvs/data/histtab17.xlsx>, and for panel D from <https://cps.ipums.org/cps/>.

Note: Share of homeowners within each income quintile for the AHS and CPS/HVS (panels B through D). Panel A: American Housing Survey (AHS); panel B: Community Population Survey/Housing Vacancy Survey (CPS / HVS); panel C: Community Population Survey/Housing Vacancy Survey (CPS/HVS)—adjusted for 2010 change in methodology. Until 2010, householders not responding to the “income” question in the CPS/HVS (panel B) were excluded from the homeownership calculations by family income level (this does not affect the overall US data). According to Census, “this change results in an increase in the homeownership rate of 1.5 percentage points for those at or below the median family income and an increase of 0.3 percentage points for those above the median family income level for the third quarter 2016.” This jump is visible in 2010 in panel B and it may help explain the smaller overall postcrisis drop for below-median households in panel B relative to the ACS and the AHS figures (as the cumulative change shown for 2010–2015 is affected by this change). Here we adjust the post-2010 data using the change of 0.3 and 1.5 percentage points reported by the census to construct an “adjusted” 2000–2015 series. Panel D: Community Population Survey/Housing Vacancy Survey (CPS/HVS)—by quintile.

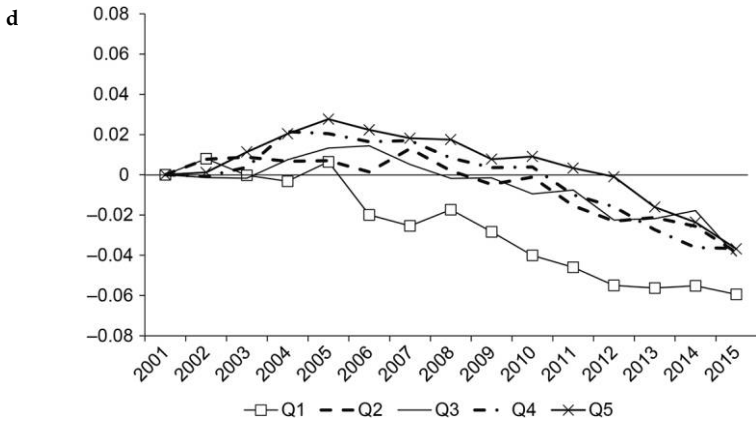
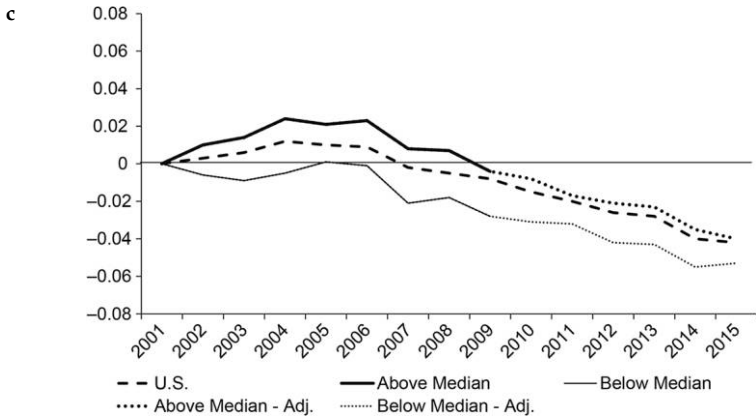


Fig. A5. (continued)

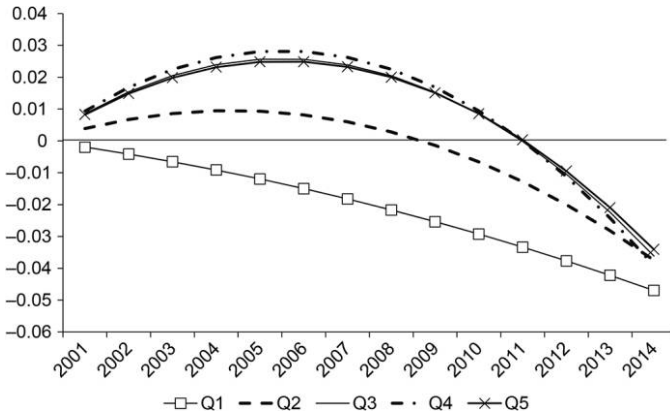


Fig. A6. Fitted values from table 5—homeownership by quintile and year
 Source: Data from the American Community Survey.
 Note: Coefficient from weighted OLS regressions using ACS weights in table 5.

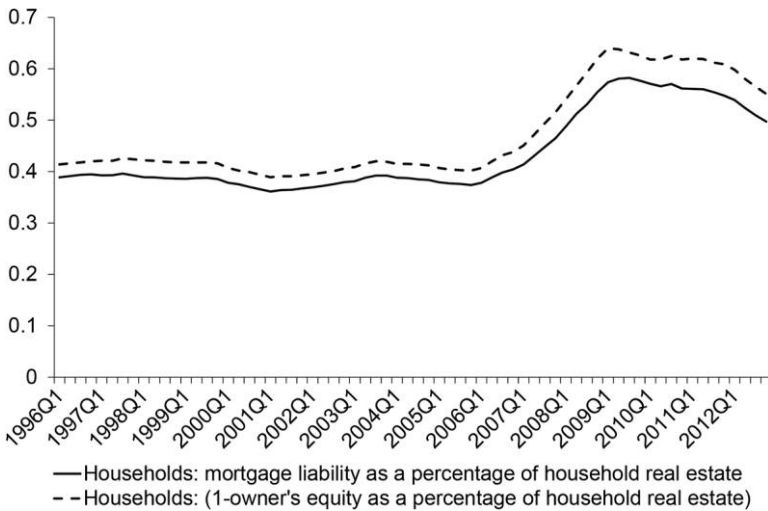


Fig. A7. Evolution of aggregate combined loan-to-value from Flow of Funds data
 Source: Data comes from Financial Accounts of the United States-Z.1. Data from <https://www.federalreserve.gov/releases/Z1/current/default.htm>.
 Note: The dashed line represents one minus the reported owner's equity as a percentage of household real estate assets. The solid line shows the fraction of household mortgage liabilities over household real estate assets. The time period is from 1996 to 2012 with a quarterly frequency.

Endnotes

We thank the editors, Martin Eichenbaum and Jonathan A. Parker, and our discussants, Erik Hurst and Gianluca Violante, for very insightful comments and suggestions. We also benefited from many helpful discussions with participants at the NBER Macro Annual Meeting. All mistakes are, of course, our own. The views expressed herein are those of the authors and do not necessarily reflect the views of the National Bureau of Economic Research. For acknowledgments, sources of research support, and disclosure of the authors' material financial relationships, if any, please see <http://www.nber.org/chapters/c13919.ack>.

1. Our data come from numerous sources, including the American Community Survey (ACS), the Home Mortgage Disclosure Act (HMDA), the Lender Processing Services (LPS) loan-level data set, and CoreLogic deeds record data.

2. Case and Schiller (2003) analyze how house price expectations form during housing bubbles, and Kaplan, Mitman, and Violante (2016) present a structural model that lays out the implications for consumption, homeownership, and leverage decisions.

3. An earlier literature assumed that credit-constrained borrowers need collateral to borrow because of information asymmetries or limited contract enforcement (see, e.g., Bernanke, Gertler, and Gilchrist 1999; Kiyotaki and Moore 1997; Gertler and Gilchrist 1994; and Rampini and Vishwanathan 2010). If agency problems vary over the business cycle, it can lead to flight to quality and with it reduced collateral values in the bust. These models of the collateral-lending channel assume rational homeowners and banks, and thus would not predict a crash in mortgage markets.

4. See Geanakoplos (2010) for a model of the collateral-lending channel that produces endogenous boom-and-bust dynamics.

5. Several studies also suggest that the housing boom led to broader allocative distortions, for example, on structural labor market imbalances, small business starts, or even students' educational outcomes (see, e.g., Charles, Hurst, and Notowidigdo 2015, 2016; and Adelino, Schoar, and Severino 2015).

6. A number of papers present evidence of the loosening of credit standards and increased lending over the boom period (see, e.g., Loutskina and Strahan 2009; Keys et al. 2010; Demyanyk and Van Hemert 2011; Dell'Ariccia, Igan, and Laeven 2012; Nadauld and Sherlund 2013; Agarwal et al. 2014). Although these studies are important in documenting the effects of the crisis, they do not speak directly to its origins.

7. Consistent with this fact, Greenwald (2016) argues that a cap on debt-to-income ratios, not loan-to-value ratios, is the more effective macroprudential policy for limiting boom-bust cycles.

8. This is the combination of all loans taken out on a home divided by the value of the asset.

9. It is a separate (and open) question whether there were "knock-on" effects from early defaults by one type of borrower, particularly subprime borrowers, on higher income and prime borrowers later on. While this could have happened, the aggregate evidence does not show clear lead-lag patterns in the delinquencies by different groups.

10. Take, for example, a situation where the fraction of households that buy homes in a given year increases from 6% to 8%, as we saw happened in the boom. If we sum the total new purchase mortgage debt at the ZIP Code level, it would look as if mortgage debt doubled even if DTIs and LTVs for all households stayed the same.

11. In addition, Mian and Sufi (2009) look at credit flows only between different ZIP Codes *within* the same metropolitan statistical area (MSA) rather than across the country as a whole.

12. Subprime lenders are defined by the Department of Housing and Urban Development, or HUD.

13. The CPS / HVS sample includes approximately 72,000 housing units, versus 500 thousand to 1.5 million households in the ACS, depending on the year. The AHS is approximately the same size as CPS/HVS. For a more detailed comparison of the ACS, AHS, and CPS/HVS data sets, please refer to <https://www.census.gov/housing/homeownershipfactsheet>

.html. The CPS/HVS sample is discussed in <https://www.census.gov/housing/hvs/methodology/index.html> and the ACS sample is described in <http://www.census.gov/acs/www/methodology/sample-size-and-data-quality/sample-size/index.php>.

14. LPS data is only available to us until 2009, thus we focus on the 2003 to 2006 period.

15. The HUD subprime lender list is available at <https://www.huduser.gov/portal/datasets/manu.html>.

16. Appendix figure A3 shows the same figure including the bottom quintile. We exclude the bottom quintile for ease of reading the figures, as the housing costs for this group are much higher than for the rest of the distribution. For example, the cost of housing as a percentage of income in 2001 is approximately 50% for the lowest income quintile and only 30% for the second quintile.

17. All three surveys (the ACS, the AHS, and the CPS/HVS) are administered by the census, and there are some differences in the levels of homeownership rates obtained across the three. For a detailed discussion about the pros and cons of each data set, please see <https://www.census.gov/housing/homeownershipfactsheet.html>.

18. Please see <http://www.census.gov/programs-surveys/acs/guidance/estimates.html> for a description of the 1-year, 3-year, and 5-year ACS public use microdata samples.

19. <http://libertystreeteconomics.newyorkfed.org/2017/02/how-resilient-is-the-us-housing-market-now.html>.

References

- Acolin, Arthur, Raphael W. Bostic, Xudong An, and Susan M. Wachter. 2017. "Homeownership and the Use of Nontraditional and Subprime Mortgages." *Housing Policy Debate* 27 (3): 393–418.
- Acolin, Arthur, Laurie S. Goodman, and Susan M. Wachter. Forthcoming. "A Renter or Homeowner Nation?" *Cityscape*.
- Adelino, Manuel, Antoinette Schoar, and Felipe Severino. 2015. "House Prices, Collateral and Self-Employment." *Journal of Financial Economics* 117 (2): 288–306.
- . 2016. "Loan Originations and Defaults in the Mortgage Crisis: The Role of the Middle Class." *Review of Financial Studies* 29 (7): 1635–70.
- Agarwal, Sumit, Gene Amromin, Itzhak Ben-David, Souphala Chomsisengphet, and Douglas D. Evanoff. 2014. "Predatory Lending and the Subprime Crisis." *Journal of Financial Economics* 113 (1): 29–52.
- Albanesi, Stefania, Giacomo DeGiorgi, and Jaromic Nosal. 2016. "Credit Growth and the Financial Crisis: A New Narrative." 2016 Meeting Paper no. 575, Society for Economic Dynamics.
- Amromin, Gene, and Anna L. Paulson. 2009. "Comparing Patterns of Default among Prime and Subprime Mortgages." *Economic Perspectives* 2Q/2009, Federal Reserve Bank of Chicago.
- Barberis, Nicholas, Robin Greenwood, Lawrence Jin, and Andrei Shleifer. 2015. "X-CAPM: An Extrapolative Capital Asset Pricing Model." *Journal of Financial Economics* 115 (1): 1–24.
- Bernanke, Ben. 2007. "Global Imbalances: Recent Developments and Prospects." Bundesbank Lecture, Berlin, Germany, September 11.
- Bernanke, Ben S., Mark Gertler, and Simon Gilchrist. 1999. "The Financial Accelerator in a Quantitative Business Cycle Framework." *Handbook of Macroeconomics* 1 (1999): 1341–93.
- Bhutta, Neil. 2015. "The Ins and Outs of Mortgage Debt during the Housing Boom and Bust." *Journal of Monetary Economics* 76:284–98.
- Burnside, Craig, Martin Eichenbaum, and Sergio Rebelo. Forthcoming. "Understanding Booms and Busts in Housing Markets." *Journal of Political Economy*.

- Case, Karl E., and Robert J. Shiller. 2003. "Is There a Bubble in the Housing Market?" *Brookings Papers on Economic Activity* 2003 (2): 299–342.
- Charles, Kerwin, Erik Hurst, and Matthew Notowidigdo. 2015. "Housing Booms and Busts, Labor Market Opportunities and College Attendance." NBER Working Paper no. 21587, Cambridge, MA.
- . 2016. "The Masking of the Decline in Manufacturing Employment by the Housing Bubble." *Journal of Economic Perspectives* 30 (2): 179–200.
- Chemla, Gilles, and Christopher Hennessy. 2014. "Skin in the Game and Moral Hazard." *Journal of Finance* 69 (4): 1597–641.
- Cheng, Ing-Haw, Sahil Raina, and Wei Xiong. 2014. "Wall Street and the Housing Bubble." *American Economic Review* 104 (9): 2797–829.
- Dang, T. V., Gary Gorton, and Bengt Holmström. 2010. "Opacity and the Optimality of Debt in Liquidity Provision." Working Paper, Massachusetts Institute of Technology.
- DeFusco, Anthony A., Charles G. Nathanson, and Eric Zwick. 2017. "Speculative Dynamics of Prices and Volume." NBER Working Paper no. 23449, Cambridge, MA.
- Dell'Ariccia, G., D. Igan, and L. Laeven. 2012. "Credit Booms and Lending Standards: Evidence from the Subprime Mortgage Market." *Journal of Money, Credit and Banking* 44 (2–3): 367–84.
- Demyanyk, Yuliya, and Otto Van Hemert. 2011. "Understanding the Subprime Mortgage Crisis." *Review of Financial Studies* 24 (6): 1848–80.
- Ferreira, Fernando, and Joseph Gyourko. 2011. "Anatomy of the Beginning of the Housing Boom: US Neighborhoods and Metropolitan Areas, 1993–2009." NBER Working Paper no. 17374, Cambridge, MA.
- . 2015. "A New Look at the US Foreclosure Crisis: Panel Data Evidence of Prime and Subprime Borrowers from 1997 to 2012." NBER Working Paper no. 21261, Cambridge, MA.
- Foote, Christopher L., Lara Loewenstein, and Paul S. Willen. 2016. "Cross-Sectional Patterns of Mortgage Debt during the Housing Boom: Evidence and Implications." NBER Working Paper no. 22985, Cambridge, MA.
- Geanakoplos, John. 2010. "The Leverage Cycle." In *NBER Macroeconomics Annual 2009*, vol. 24, ed. D. Acemoglu, K. Rogoff, and M. Woodford, 1–65. Chicago: University of Chicago Press. [plus erratum] [CFP 1304].
- Gennaioli, Nicola, Andrei Shleifer, and Robert Vishny. 2015. "Neglected Risks: The Psychology of Financial Crises." *American Economic Review Papers and Proceedings* 105 (5): 310–14.
- Gertler, Mark, and Simon Gilchrist. 1994. "Monetary Policy, Business Cycles, and the Behavior of Small Manufacturing Firms." *Quarterly Journal of Economics* 109 (2): 309–40.
- Greenwald, Daniel L. 2016. "The Mortgage Credit Channel of Macroeconomic Transmission." MIT Sloan Research Paper no. 5184-16, Massachusetts Institute of Technology, Sloan School of Management.
- Guerrieri, Veronica, Daniel Hartley, and Erik Hurst. 2013. "Endogenous Gentrification and Housing Price Dynamics." *Journal of Public Economics* 100:45–60.
- Justiniano, Alejandro, Giorgio E. Primiceri, and Andrea Tambalotti. 2015. "Credit Supply and the Housing Boom." NBER Working Paper no. 20874, Cambridge, MA.
- Kaplan, Greg, Kurt Mitman, and Gianluca Violante. 2016. "Consumption and House Prices in the Great Recession: Model Meets Evidence." Manuscript, New York University.

- Keys, B. J., T. Mukherjee, A. Seru, and V. Vig. 2010. "Did Securitization Lead to Lax Screening? Evidence from Subprime Loans." *Quarterly Journal of Economics* 125 (1): 307–62.
- Kiyotaki, Nobuhiro, and John Moore. 1997. "Credit Cycles." *Journal of Political Economy* 105 (2): 211–48.
- Landvoigt, Tim, Monika Piazzesi, and Martin Schneider. 2015. "The Housing Market(s) of San Diego." *American Economic Review* 105 (4): 1371–407.
- Lewis, Michael. 2015. *The Big Short: Inside the Doomsday Machine (movie tie-in)*. New York: W. W. Norton & Company.
- Lo, Andrew. 2004. "The Adaptive Markets Hypothesis: Market Efficiency from an Evolutionary Perspective." *Journal of Portfolio Management* 30:15–29.
- Loutskina, E., and P. E. Strahan. 2009. "Securitization and the Declining Impact of Bank Finance on Loan Supply: Evidence from Mortgage Originations." *Journal of Finance* 64 (2): 861–89.
- Makarov, Igor, and Guillaume Plantin. 2013. "Equilibrium Subprime Lending." *Journal of Finance* 68 (3): 849–79 .
- Mayer, Christopher, Karen Pence, and Shane Sherlund. 2008. "The Rise in Mortgage Defaults: Facts and Myths." *Journal of Economic Perspectives*
- Mian, Atif, and Amir Sufi. 2009. "The Consequences of Mortgage Credit Expansion: Evidence from the US Mortgage Default Crisis." *Quarterly Journal of Economics* 124 (4): 1449–96.
- . 2015. *House of Debt: How They (and You) Caused the Great Recession, and How We Can Prevent It From Happening Again*. Chicago: University of Chicago Press.
- . 2016. "Household Debt and Defaults from 2000 to 2010: The Credit Supply View." Kreisman Working Papers Series in Housing Law and Policy no. 28. Available at: https://papers.ssrn.com/sol3/papers.cfm?abstract_id=2606683.
- Nadauld, Taylor D., and Shane M. Sherlund. 2013. "The Role of the Securitization Process in the Expansion of Subprime Credit." *Journal of Financial Economics* 107 (2): 454–76.
- Parlour, Christine, and Guillaume Plantin. 2008. "Loan Sales and Relationship Banking." *Journal of Finance* 63 (3): 1291–314.
- Piazzesi, Monika, and Martin Schneider. 2009. "Momentum Traders in the Housing Market: Survey Evidence and a Search Model." *American Economic Review* 99 (2): 406–11.
- Rajan, Raghuram G. 2011. *Fault Lines: How Hidden Fractures Still Threaten the World Economy*. Princeton, NJ: Princeton University Press.
- Rampini, Adriano, and S. Viswanathan. 2010. "Collateral, Risk Management, and the Distribution of Debt Capacity." *Journal of Finance* 65:2293–322.
- Ruggles, Steven, Katie Genadek, Ronald Goeken, Josiah Grover, and Matthew Sobek. 2015. Integrated Public Use Microdata Series, Minneapolis, University of Minnesota.
- Stein, Jeremy C. 1995. "Prices and Trading Volume in the Housing Market: A Model with Down-Payment Effects." *Quarterly Journal of Economics* 110 (2): 379–406.