



# MIT Open Access Articles

## *K2-291b: A Rocky Super-Earth in a 2.2 day Orbit*

The MIT Faculty has made this article openly available. **Please share** how this access benefits you. Your story matters.

<b>As Published</b>	10.3847/1538-3881/AAFE83
<b>Publisher</b>	American Astronomical Society
<b>Version</b>	Final published version
<b>Citable link</b>	<a href="https://hdl.handle.net/1721.1/132398">https://hdl.handle.net/1721.1/132398</a>
<b>Terms of Use</b>	Article is made available in accordance with the publisher's policy and may be subject to US copyright law. Please refer to the publisher's site for terms of use.



## K2-291b: A Rocky Super-Earth in a 2.2 day Orbit<sup>\*†</sup>

Molly R. Kosiarek<sup>1,31</sup>, Sarah Blunt<sup>2,3,31</sup>, Mercedes López-Morales<sup>3</sup>, Ian J. M. Crossfield<sup>1,4</sup>, Evan Sinukoff<sup>2,5</sup>, Erik A. Petigura<sup>2,32</sup>, Erica J. Gonzales<sup>1,31</sup>, Ennio Poretti<sup>6,7</sup>, Luca Malavolta<sup>8,9</sup>, Andrew W. Howard<sup>2</sup>, Howard Isaacson<sup>10</sup>, Raphaëlle D. Haywood<sup>3,33</sup>, David R. Ciardi<sup>11</sup>, Makennah Bristow<sup>12</sup>, Andrew Collier Cameron<sup>13</sup>, David Charbonneau<sup>3</sup>, Courtney D. Dressing<sup>10,14,33</sup>, Pedro Figueira<sup>15,16</sup>, Benjamin J. Fulton<sup>2,17</sup>, Bronwen J. Hardee<sup>1</sup>, Lea A. Hirsch<sup>10,18</sup>, David W. Latham<sup>5</sup>, Annelies Mortier<sup>13,19</sup>, Chantanelle Nava<sup>3</sup>, Joshua E. Schlieder<sup>20</sup>, Andrew Vanderburg<sup>3,21,33</sup>, Lauren Weiss<sup>5,22</sup>, Aldo S. Bonomo<sup>23</sup>, François Bouchy<sup>24</sup>, Lars A. Buchhave<sup>25</sup>, Adrien Coffinet<sup>24</sup>, Mario Damasso<sup>23</sup>, Xavier Dumusque<sup>24</sup>, Christophe Lovis<sup>24</sup>, Michel Mayor<sup>24</sup>, Giusi Micela<sup>26</sup>, Emilio Molinari<sup>6,27</sup>, Francesco Pepe<sup>24</sup>, David Phillips<sup>3</sup>, Giampaolo Piotto<sup>8,9</sup>, Ken Rice<sup>28,29</sup>, Dimitar Sasselov<sup>3</sup>, Damien Ségransan<sup>22</sup>, Alessandro Sozzetti<sup>23</sup>, Stéphane Udry<sup>24</sup>, and Chris Watson<sup>30</sup>

<sup>1</sup> Department of Astronomy and Astrophysics, University of California, Santa Cruz, CA 95064, USA

<sup>2</sup> California Institute of Technology, Pasadena, CA 91125, USA

<sup>3</sup> Harvard-Smithsonian Center for Astrophysics, 60 Garden Street, Cambridge, MA 01238, USA

<sup>4</sup> Department of Physics and Kavli Institute for Astrophysics and Space Research, Massachusetts Institute of Technology, Cambridge, MA 02139, USA

<sup>5</sup> Institute for Astronomy, University of Hawai'i at Mānoa, Honolulu, HI 96822, USA

<sup>6</sup> INAF—Fundación Galileo Galilei, Rambla José Ana Fernández Pérez 7, E-38712 Breña Baja, Tenerife, Spain

<sup>7</sup> INAF—Osservatorio Astronomico di Brera, Via E. Bianchi 46, I-23807 Merate (LC), Italy

<sup>8</sup> INAF—Osservatorio Astronomico di Padova, Vicolo dell'Osservatorio 5, I-35122 Padova, Italy

<sup>9</sup> Dipartimento di Fisica e Astronomia “Galileo Galilei,” Università di Padova, Vicolo dell'Osservatorio 3, I-35122 Padova, Italy

<sup>10</sup> Astronomy Department, University of California, Berkeley, CA 94720, USA

<sup>11</sup> NASA Exoplanet Science Institute, Caltech/IPAC-NExSci, 1200 East California Boulevard, Pasadena, CA 91125, USA

<sup>12</sup> Department of Physics, University of North Carolina at Asheville, Asheville, NC 28804, USA

<sup>13</sup> Centre for Exoplanet Science, SUPA, School of Physics and Astronomy, University of St. Andrews, St. Andrews KY16 9SS, UK

<sup>14</sup> Division of Geological & Planetary Sciences, California Institute of Technology, Pasadena, CA 91125, USA

<sup>15</sup> European Southern Observatory, Alonso de Córdova 3107, Vitacura, Región Metropolitana, Chile

<sup>16</sup> Instituto de Astrofísica e Ciências do Espaço, Universidade do Porto, CAUP, Rua das Estrelas, PT4150-762 Porto, Portugal

<sup>17</sup> IPAC-NASA Exoplanet Science Institute Pasadena, CA 91125, USA

<sup>18</sup> Kavli Institute for Particle Astrophysics and Cosmology, Stanford University, Stanford, CA 94305, USA

<sup>19</sup> Astrophysics group, Cavendish Laboratory, University of Cambridge, JJ Thomson Avenue, Cambridge CB3 0HE, UK

<sup>20</sup> NASA Goddard Space Flight Center, Greenbelt, MD 20771, USA

<sup>21</sup> Department of Astronomy, The University of Texas at Austin, 2515 Speedway, Stop C1400, Austin, TX 78712, USA

<sup>22</sup> Institut de Recherche sur les Exoplanètes, Université de Montréal, Montréal, QC, Canada

<sup>23</sup> INAF—Osservatorio Astronomico di Torino, via Osservatorio 20, I-10025 Pino Torinese, Italy

<sup>24</sup> Observatoire Astronomique de l'Université de Genève, Chemin des Maillettes 51, Sauverny, CH-1290, Switzerland

<sup>25</sup> Centre for Star and Planet Formation, Natural History Museum of Denmark, University of Copenhagen, DK-1350 Copenhagen, Denmark

<sup>26</sup> INAF—Osservatorio Astronomico di Palermo, Piazza del Parlamento 1, I-90134 Palermo, Italy

<sup>27</sup> INAF—Osservatorio Astronomico di Cagliari, via della Scienza 5, I-09047, Selargius, Italy

<sup>28</sup> SUPA, Institute for Astronomy, Royal Observatory, University of Edinburgh, Blackford Hill, Edinburgh EH93HJ, UK

<sup>29</sup> Centre for Exoplanet Science, University of Edinburgh, Edinburgh, UK

<sup>30</sup> Astrophysics Research Centre, School of Mathematics and Physics, Queen's University Belfast, Belfast, BT7 1NN, UK

Received 2018 August 16; revised 2019 January 3; accepted 2019 January 9; published 2019 February 13

### Abstract

K2-291 is a solar-type star with a radius of  $R_* = 0.899 \pm 0.034 R_\odot$  and mass of  $M_* = 0.934 \pm 0.038 M_\odot$ . From the K2 C13 data, we found one super-Earth planet ( $R_p = 1.589_{-0.072}^{+0.095} R_\oplus$ ) transiting this star on a short period orbit ( $P = 2.225177_{-6.8e-5}^{+6.6e-5}$  days). We followed this system up with adaptive-optic imaging and spectroscopy to derive stellar parameters, search for stellar companions, and determine a planet mass. From our 75 radial velocity measurements using High Resolution Echelle Spectrometer on Keck I and High Accuracy Radial velocity Planet Searcher in the northern hemisphere on Telescopio Nazionale Galileo, we constrained the mass of K2-291 b to  $M_p = 6.49 \pm 1.16 M_\oplus$ . We found it necessary to model correlated stellar activity radial velocity signals with a Gaussian process (GP) in order to more accurately model the effect of stellar noise on our data; the addition of the GP also improved the precision of this mass measurement. With a bulk density of  $\rho = 8.84_{-2.03}^{+2.50} \text{ g cm}^{-3}$ , the planet is consistent with an Earth-like rock/iron composition and no substantial

<sup>\*</sup> Based on observations obtained at the W. M. Keck Observatory, which is operated jointly by the University of California and the California Institute of Technology. Keck time has been granted by NASA, the University of Hawaii, the California Institute of Technology, and the University of California.

<sup>†</sup> Based on observations made with the Italian Telescopio Nazionale Galileo (TNG) operated by the Fundación Galileo Galilei (FGG) of the Istituto Nazionale di Astrofisica (INAF) at the Osservatorio del Roque de los Muchachos (La Palma, Canary Islands, Spain).

<sup>31</sup> NSF Graduate Research Fellow.

<sup>32</sup> Hubble Fellow.

<sup>33</sup> NASA Sagan Fellow.

gaseous envelope. Such an envelope, if it existed in the past, was likely eroded away by photoevaporation during the first billion years of the star’s lifetime.

*Key words:* planets and satellites: composition – planets and satellites: detection – techniques: radial velocities

*Supporting material:* machine-readable table

## 1. Introduction

NASA’s *Kepler* and *K2* missions have found hundreds of small, transiting planets with orbital periods less than 10 days. Planets with such short orbital periods are not represented among the solar system planets. In this paper, we describe the discovery and characterization of one such super-Earth sized planet, K2-291 b, orbiting close to its host star ( $P = 2.225177^{+6.6e-5}_{-6.8e-5}$  days).

With a radius of  $R_p = 1.589^{+0.095}_{-0.072} R_{\oplus}$ , K2-291 b lies between two peaks in planet occurrence (Fulton et al. 2017). This bimodality in radius space potentially corresponds to a divide in planet composition (Lopez & Fortney 2014; Marcy et al. 2014; Weiss & Marcy 2014; Rogers 2015). By determining the mass of K2-291 b, we explore this potential boundary between super-Earth and sub-Neptune planets.

Furthermore, one way that sub-Neptunes can transition across this divide to become rocky super-Earths is through photoevaporation, a process where high-energy photons from the star heat and ionize the envelope causing significant portions to escape. Low-mass planets receiving high stellar fluxes will lose a larger portion of their envelopes (Lopez & Fortney 2013; Owen & Wu 2013). This paper explores the potential occurrence of such a process for K2-291 b.

In Section 2 we describe the transit discovery and characterization from the *K2* data. Next, we describe our stellar characterization using both spectra and adaptive optics (AO) imaging in Section 3. Our follow-up radial velocity observations are described and analyzed in Section 4. We discuss implications of the bulk density of K2-291 b and potential planet evolution through photoevaporation in Section 5. Finally, we conclude in Section 6.

## 2. K2 Light Curve Analysis

Photometry of K2-291 was collected during Campaign 13 of NASA’s *K2* mission between 2017 March 8 and May 27. We processed the *K2* data using a photometric pipeline that has been described in detail in past works by members of our team (Petigura et al. 2018, and references therein). In short, we used the package *k2phot* to analyze the *K2* light curves (Petigura et al. 2015; Aigrain et al. 2016), perform photometry on the *K2* target pixel files, model the time and position dependent photometric variability, and choose the aperture that minimizes noise on three-hour timescales.

We find the signal of one transiting planet at a period of  $P = 2.225177^{+6.6e-5}_{-6.8e-5}$  days (Figure 1, Table 1) in the light curve with the publicly available *TERRA* algorithm (Petigura et al. 2018). In short, *TERRA* flags targets with potential transit signals as threshold-crossing events (TCEs); once a TCE is flagged, *TERRA* masks the previous TCE and is run again on the target star to search for additional signals in the same system. For K2-291, *TERRA* finds one TCE with a signal-to-noise ratio (S/N) of 21; this signal is consistent with a super-Earth-sized planet transit. After determining the parameters of the host star, described below in Section 3.2, we perform a full Markov chain Monte Carlo

(MCMC) analysis on the light curve using a custom Python wrapper of the *batman*<sup>34</sup> transit fitting code (Kreidberg 2015).

Our general approach is described further in our previous papers (e.g., Crossfield et al. 2016). In short, we initialize our *batman* fit with the best-fit parameters from *TERRA* to perform a maximum-likelihood fit and use *emcee*<sup>35</sup> (Foreman-Mackey et al. 2013) to determine errors. Our model parameters are the time of transit  $T_0$ , orbital period  $P$ , inclination  $i$ , radius of planet in stellar radii ( $R_p/R_*$ ), transit duration  $T_{14}$ , second-to-third contact duration  $T_{23}$ , semimajor axis in stellar radii  $R_*/a$ , impact parameter  $b$ , and quadratic limb-darkening coefficients  $u_1$  and  $u_2$ . Figure 1 shows our best-fit transit model and Table 1 lists the parameters and uncertainties.

## 3. Stellar Characterization

### 3.1. Collection of Spectra

We collected 75 radial velocity measurements of K2-291 (Table 2) with the High Resolution Echelle Spectrometer (HIRES; Vogt et al. 1994) on the Keck I Telescope on Maunakea and the High Accuracy Radial velocity Planet Searcher in the Northern hemisphere (HARPS-N; Cosentino et al. 2012) on the Telescopio Nazionale Galileo in La Palma (Table 2). HARPS-N is an updated version of HARPS at the European Southern Observatory (ESO) 3.6 m (Mayor et al. 2003).

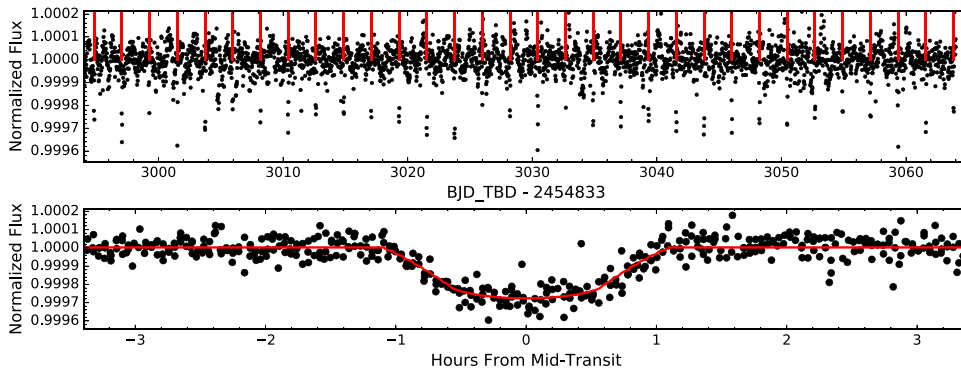
We obtained 50 measurements with HIRES between 2017 August and 2018 February. These data were collected with the C2 decker with a typical S/N of 150/pixel (125k on the exposure meter,  $\sim 10$  minute exposures). An iodine cell was used for wavelength calibration (Butler et al. 1996). We also collected a higher resolution template observation with the B3 decker on 2017 September 6 with  $0''.8$  seeing. The template was a triple exposure with a total S/N of 346/pixel (250k each on the exposure meter) without the iodine cell. See Howard et al. (2010) for more details on this data collection method.

We obtained 25 measurements with HARPS-N between 2017 November and 2018 March as part of the HARPS-N Collaboration’s Guaranteed Time Observations (GTO) program. The observations follow a standard observing approach of one or two observations per GTO night, separated by 2–3 hr. The spectra have S/Ns in the range of  $S/N = 35$ –99 (average  $S/N = 66$ ), seeing and sky transparency dependent, at 550 nm in 30 minute exposures. This separation was designed to well sample the planet’s orbital period and to minimize the stellar granulation signal (Dumusque et al. 2011).

The HIRES data reduction and analysis followed the California Planet Search method described in Howard et al. (2010). The HARPS-N spectra were reduced with version 3.7 of the HARPS-N Data Reduction Software, which includes corrections for color systematics introduced by variations in seeing (Cosentino et al. 2014). The HARPS-N radial velocities were computed with a numerical weighted mask following the

<sup>34</sup> Available at <https://github.com/lkreidberg/batman>.

<sup>35</sup> Available at <https://github.com/dfm/emcee>.



**Figure 1.** Top: normalized flux of K2 light curve with red tick-marks indicating the transit times. Bottom: phase-folded transit data (black points) including our model fit (red line).

**Table 1**  
Transit Derived Parameters

Parameter	Name (units)	Value
$T_0$	Time of transit ( $\text{BJD}_{\text{TDB}}$ )	$2457830.06163^{+0.00099}_{-0.00104}$
$P$	Period (days)	$2.225177^{+0.000066}_{-0.000068}$
$i$	Inclination (degrees)	$85.26^{+0.23}_{-0.20}$
$R_p/R_*$	Radius of planet in stellar radii (%)	$1.614^{+0.062}_{-0.033}$
$T_{14}$	Total duration (hr)	$1.719^{+0.041}_{-0.032}$
$T_{23}$	Second-to-third contact	$1.625^{+0.043}_{-0.035}$
	Transit duration (hr)	
$R_*/a$	Semimajor axis in stellar radii	$0.1283^{+0.0017}_{-0.0016}$
$b$	Impact parameter	$0.646^{+0.021}_{-0.026}$
$a$	Semimajor axis (au)	$0.03261^{+0.00044}_{-0.00044}$
$R_p$	Radius ( $R_{\oplus}$ )	$1.589^{+0.095}_{-0.072}$
$S_{inc}$	Incident stellar flux ( $S_{\oplus}$ )	$633^{+59}_{-56}$

**Table 2**  
Radial Velocities

Time ( $\text{BJD}_{\text{TDB}}$ )	RV <sup>a</sup> ( $\text{m s}^{-1}$ )	RV Unc. ( $\text{m s}^{-1}$ )	$S_{\text{HK}}$	Instrument
2457984.09683	-14.53	1.10	0.2227	HIRES
2457985.06918	-7.19	1.33	0.2231	HIRES
2457985.07415	-3.85	1.45	0.2238	HIRES
2458086.52993	25109.80	1.88	0.2471	HARPS-N
2458098.47831	25132.18	0.98	0.2768	HARPS-N
2458102.52715	25125.97	1.61	0.2586	HARPS-N

**Note.**

<sup>a</sup> HIRES observations report radial velocity changes with respect to the systematic velocity of an observed spectrum whereas HARPS-N observations use a delta-function template with true rest wavelengths.

(This table is available in its entirety in machine-readable form.)

methodology outlined by Baranne et al. (1996) and Pepe et al. (2002). The resultant radial velocities are presented in Table 2 and in Figure 6.

The HIRES data were collected with three consecutive exposures of 10 minutes each to well sample the stellar p-mode (acoustic) oscillations which occur on a timescale of a few minutes. The HARPS-N data were collected in single observations. Multiple exposures per night were frequently taken, separated by a few hours, to better sample the planet orbital period.

### 3.2. Stellar Parameters

We derived the stellar parameters by combining constraints from spectroscopy, astrometry, and photometry (Table 3). The methodology is described in detail in Fulton & Petigura (2018) and summarized in the following paragraphs. We used the HIRES template spectrum to determine the parameters described below. A comparison analysis performed on the HARPS-N data resulted in  $3\sigma$  consistent parameters.

Stellar radius is derived from the Stefan Boltzman Law given an absolute bolometric magnitude  $M_{\text{bol}}$  and an effective temperature. We derived stellar effective temperature  $T_{\text{eff}}$ , surface gravity  $\log(g)$ , and metallicity  $[\text{Fe}/\text{H}]$  by fitting our iodine-free template spectrum using the Spectroscopy Made Easy<sup>36</sup> (SME) spectral synthesis code (Valenti & Piskunov 2012) following

the prescriptions of Brewer et al. (2016). Stellar mass is then calculated using the package `isoclassify`<sup>37</sup> (Huber et al. 2017). We then derived bolometric magnitudes according to

$$M_{\text{bol}} = m_K - A_k - \mu + BC, \quad (1)$$

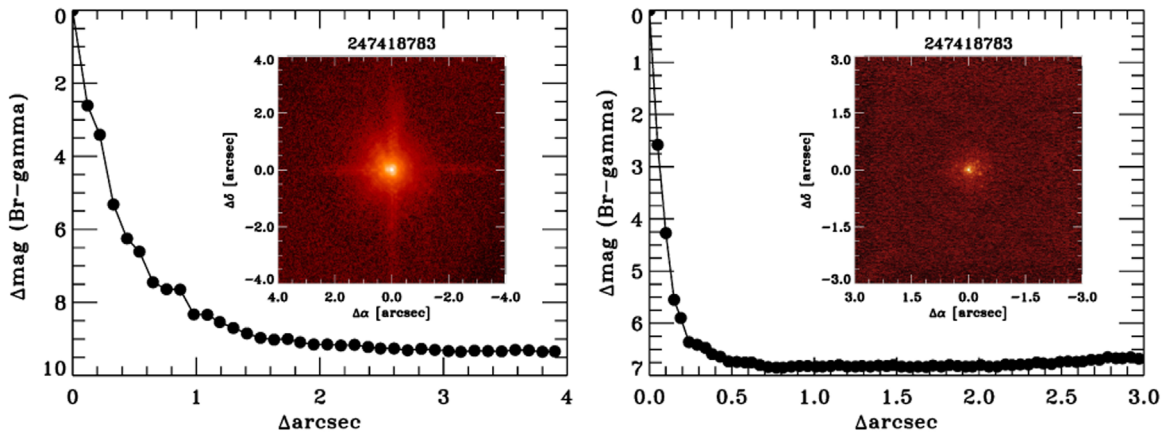
where  $m_K$  is the apparent  $K$ -band magnitude,  $A_k$  is the line-of-sight  $K$ -band extinction,  $\mu$  is the distance modulus, and  $BC$  is the  $K$ -band bolometric correction. In our modeling, constraints on  $m_K$  come from 2MASS (Skrutskie et al. 2006) and constraints on  $\mu$  come from the *Gaia* DR2 parallax measurement (Gaia Collaboration et al. 2018). We derived  $BC$  by interpolating along a grid of  $T_{\text{eff}}$ ,  $\log g$ ,  $[\text{Fe}/\text{H}]$ , and  $A_V$  in the MIST/C3K grid<sup>38</sup> (Choi et al. 2016; Dotter 2016; C. Conroy et al. 2019, in preparation). To find  $A_k$ , we first estimate  $A_V$  from a 3D interstellar dust reddening map by Green et al. (2018), then convert to  $A_k$  using the extinction vector from Schlafly et al. (2018).

The stellar rotation velocity  $v \sin i$ , is computed using the SpecMatch-Syn code (Petigura 2015). Due to the resolution of the instrument the code has been calibrated down to  $2 \text{ km s}^{-1}$ , and values smaller than this should be considered as an upper limit. Although we measured a value of  $0.2 \text{ km s}^{-1}$ , we adopt  $v \sin i < 2 \text{ km s}^{-1}$ . To determine the chromospheric activity measurement  $\log(R'_{\text{HK}})$ , we measured the flux in the calcium H and K lines relative to the continuum as described in Isaacson

<sup>36</sup> Available at <http://www.stsci.edu/~valenti/sme.html>.

<sup>37</sup> Available at <https://github.com/danxhuber/isoclassify>.

<sup>38</sup> Available at [http://waps.cfa.harvard.edu/MIST/model\\_grids.html](http://waps.cfa.harvard.edu/MIST/model_grids.html).



**Figure 2.** We detect no objects near K2-291 with PHARO-AO on the Hale telescope (left) or with Keck/NIRC2 adaptive optics (right), as shown in the inset images and the resultant Br- $\gamma$  contrast curves. The curves plotted correspond to a  $5\sigma$  detection limit.

**Table 3**  
Stellar Parameters

Parameter	Name (units)	Value
Name and Magnitude <sup>a</sup>		
EPIC		247418783
UCAC ID		558-013367
2MASS ID		05054699 + 2132552
Gaia DR2		3409148746676599168
HD		285181
Kp	mag	9.89
$R$	mag	$9.84 \pm 0.14$
$J$	mag	$8.765 \pm 0.032$
$K$	mag	$8.35 \pm 0.02$
$V$	mag	$10.01 \pm 0.03$
K2		291
Location <sup>b</sup>		
R.A.	Right ascension (deg)	05 05 46.991
Decl.	Declination (deg)	+21 32 55.021
$\pi$	Parallax (arcsec)	$0.011076 \pm 6.03e-05$
$d$	Distance (pc)	$90.23^{+0.51}_{-0.46}$
Stellar Properties		
$A_v$	Extinction (mag)	$0.11740 \pm 0.00061$
$R_*$	Radius ( $R_\odot$ )	$0.899^{+0.035}_{-0.033}$
$M_*$	Mass ( $M_\odot$ )	$0.934 \pm 0.038$
$L_*$	Luminosity ( $L_\odot$ )	$0.682^{+0.014}_{-0.016}$
$T_{\text{eff}}$	Effective temperature (K)	$5520 \pm 60$
$\log(g)$	Surface gravity (cgs)	$4.50 \pm 0.05$
[Fe/H]	Metallicity (dex)	$0.08 \pm 0.04$
$v \sin i$	Rotation (km s <sup>-1</sup> )	$< 2.0$
$\log(\text{age})$	Age (yr)	$9.57^{+0.30}_{-0.49}$
$\log(R'_{\text{HK}})$	Chromospheric activity	-4.726

**Notes.**

<sup>a</sup> MAST.

<sup>b</sup> Gaia DR2 (Gaia Collaboration et al. 2018).

& Fischer (2010). We measured the flux in the Calcium H and K lines relative to the continuum. Small differences are noted as  $S_{\text{HK}}$  and are tracked to determine if the stellar activity is influencing the radial velocity data.

### 3.3. Search for Stellar Companions

We searched for stellar companions and blended background stars to K2-291 since these stars could contaminate the stellar

flux in the K2 aperture, resulting in an inaccurate planet radius and affecting our radial velocity data if bound.

We searched for secondary spectral lines with the ReaMatch algorithm (Kolbl et al. 2015). This algorithm searches for faint orbiting companion stars or background stars that are contaminating the spectrum of the target star. There are no companions detected down to 1% of the brightness of K2-291 with a radial velocity offset of less than  $10 \text{ km s}^{-1}$ .

We further looked for stellar companions to K2-291 with AO. We observed K2-291 on 2017 August 3 UT with NIRC2 on the Keck II AO system (Wizinowich et al. 2000). We obtained images with a three-point dither pattern in the Br- $\gamma$  and  $J_{\text{cont}}$  filters at an air mass of 1.71. We do not detect any companions down to  $\Delta \text{Br-}\gamma = 6.41$  at  $1''.03$  as shown in Figure 2.

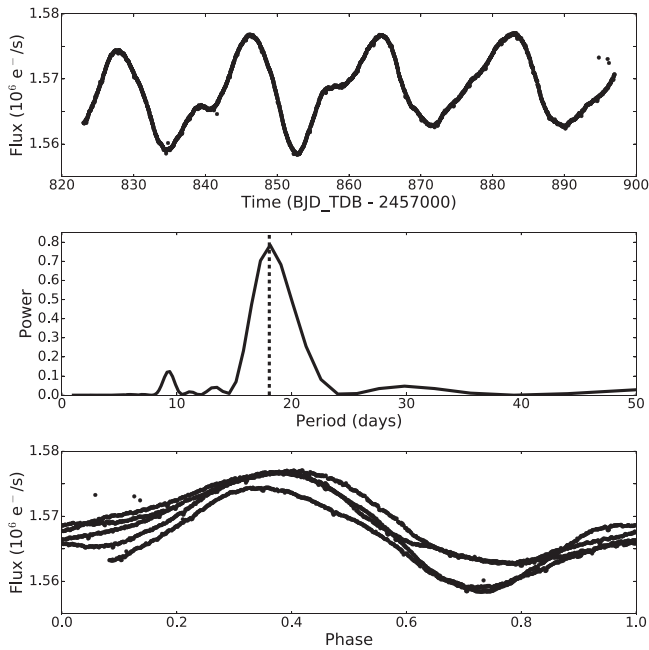
Complementary follow-up observations were taken on 2017 September 7 UT with PHARO-AO on the Hale telescope (Hayward et al. 2001). We obtained images with a five-point dither pattern in the Br- $\gamma$  filter at an air mass of 1.04. The conditions of our observations allowed us to be sensitive down to  $\Delta \text{Br-}\gamma = 8.05$  at  $1''.05$  as shown in Figure 2 and confirm that we detect no companions to K2-291 above our limits; this also suggests that the transit signal detected is not by a background eclipsing binary.

### 3.4. Stellar Activity Analysis

Stars produce intrinsic radial velocity variations due to their internal and surface processes that can be mistaken as planetary signals. The timescales of these radial velocity variations range from a few minutes or hours (p-modes and granulation) to days or years (stellar rotation and large-scale magnetic cycle variations; Schrijver & Zwaan 2000).

We examine the K2 light curve periodicity (Figure 3) with a Lomb-Scargle periodogram from *scipy* (Jones et al. 2001) and attribute the clear signal at 18.1 days to rotational modulation of stellar surface features (e.g., spots). There is a secondary peak at half of the strongest peak, and no other significant peaks.

One must consider these timescales when planning radial velocity data collection and analysis to adequately average out or monitor these signals (Dumusque et al. 2011). As described in Section 3.1, we chose the exposure time, spacing, and number of exposures to reduce the effects of p-modes and granulation. We investigated the potential radial velocity signal



**Figure 3.** Top: light curve of K2-291 from K2 C13. We attribute the periodicity to stellar rotation and the variation to star spot modulation. Transits are too shallow to be seen by eye, and are shown in Figure 1. Middle: Lomb–Scargle periodogram of K2 data, illustrating clear periodicity at 18.1 days (dotted line). Bottom: K2 data phase-folded over 18.1 days.

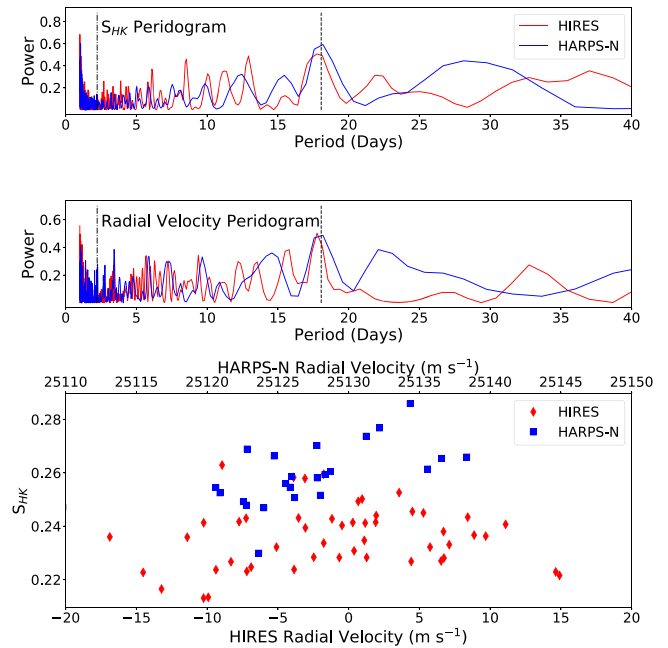
from the stellar rotation by examining the calcium II H and K lines ( $S_{HK}$ , Table 2) in the HIRES and HARPS-N data (Isaacson & Fischer 2010).

We found a clear signal in both the  $S_{HK}$  and radial velocity data that matches the timescale of the rotation period of K2-291 (Figure 4), as determined from the K2 light curve; therefore we need to account for this signal in our radial velocity analysis.

We then estimated the correlation coefficient between the measured radial velocity and activity indexes. Due to different zero-points in both radial velocity and  $S_{HK}$ , we performed the analysis for the two instruments, HARPS-N and HIRES, independently. From the calculation of the correlation coefficient value and the knowledge of the sample size,  $p$ -value analysis is often used to reject the null hypothesis of non-correlation at a given significance level. We calculated the  $p$ -value for both data sets using `scipy.stats.pearsonr` (Jones et al. 2001). The HARPS-N radial velocity and  $S_{HK}$  data have a  $p$ -value of 0.01 allowing us to reject the null hypothesis, therefore suggesting a correlation. The HIRES data, however, have a  $p$ -value of 0.45 which does not support a correlation.

To check any potential flaws in the  $p$ -value test we also used the Bayesian framework described in Figueira et al. (2016) that allows us to estimate the probability distribution of the coefficient, providing important insight on the correlation presence. This framework calculates the Pearson’s correlation coefficient to test for the presence of a linear correlation, and the Spearman’s rank to test for the presence of a monotonic correlation.

On HARPS-N data we obtain a Pearson’s correlation coefficient of 0.56 with a 95% highest probability density (HPD) between the values [0.29, 0.79], and a Spearman’s rank of 0.63 with 95% HPD of [0.39, 0.83]. This shows that not only the correlation coefficient is large but that its distribution populates essentially positive correlation values. As such, the



**Figure 4.** Periodograms of  $S_{HK}$  (top), radial velocity (middle), and  $S_{HK}$  vs. radial velocity (bottom). The stellar rotation period is represented by a dashed line. The planet’s orbital period is represented by a dashed–dotted line. There is a strong radial velocity signal and  $S_{HK}$  signal at the stellar rotation period in both data sets.

correlation is strong and significant, both in linear and monotonic terms. On the other hand, for HIRES we obtain an average value of 0.10 with 95% HPD of  $[-0.17, 0.35]$  and 0.13 with 95% HPD of  $[-0.12, 0.39]$  for Pearson’s correlation coefficient and Spearman’s rank, respectively. The correlation coefficients are low in absolute value and distributed from negative to positive values; its distribution does not support the presence of a correlation. Different instrument properties, such as wavelength ranges and resolution, may explain the differences in the  $S_{HK}$  values and correlation strengths.

## 4. Radial Velocity Analysis

### 4.1. Radial Velocity Planet Search

We first searched for K2-291 b in the combined HIRES and HARPS-N data sets without any priors from our transit analysis to provide an independent planet detection. The radial velocity data sets from HIRES and HARPS-N are merged using the  $\gamma$  values reported in Table 4 to adjust for their different zero-points in this search. The 75 data points thus obtained are then analyzed in frequency (Figure 5) using the Iterative Sine-Wave fitting (Vaníček 1971), by computing the fractional reduction in the residual variance after each step (reduction factor). This is an iterative process, and peaks should be directly compared within an iteration but not between them. The power spectrum immediately supplies the rotational period at  $f = 0.055 \text{ day}^{-1}$  (top panel), corresponding to  $P_{\text{rot}} = 18.1$  days. The light curve is very asymmetrical (Figure 3) and therefore signals are visible at the harmonics values,  $f$ ,  $2f$ ,  $3f$ , and  $4f$ . We were successful in detecting the expected frequency of the planet signal at  $f = 0.45 \text{ day}^{-1}$  after including the stellar rotational frequencies in a simultaneous fit (middle panel). We also searched for any other additional signals, but we did not detect any clear peaks (bottom panel). Indeed, the interaction of the noise with the

**Table 4**  
Radial Velocity Fit Parameters

Parameter	Name (Units)	Value
<b>Planet Parameters</b>		
$P_b$	Period (days)	$2.225172^{+6.9e-05}_{-7e-05}$
$T_{\text{conj}b}$	Time of conjunction (BJD <sub>TDB</sub> )	$2457830.0616^{+0.0011}_{-0.0010}$
$e_b$	Eccentricity	$\equiv 0.0$
$\omega_b$	Argument of periaapse (radians)	$\equiv 0.0$
$K_b$	Semi-amplitude ( $\text{m s}^{-1}$ )	$3.33 \pm 0.59$
$M_b$	Mass ( $M_{\oplus}$ )	$6.49 \pm 1.16$
$\rho_b$	Density ( $\text{g cm}^{-3}$ )	$8.84^{+2.50}_{-2.03}$
<b>Other Parameters</b>		
$\gamma_{\text{HIRES}}$	Mean center-of-mass velocity ( $\text{m s}^{-1}$ )	$-3.5 \pm 3.2$
$\gamma_{\text{HARPS-N}}$	Mean center-of-mass velocity ( $\text{m s}^{-1}$ )	$25126.2^{+3.4}_{-3.5}$
$\dot{\gamma}$	Linear acceleration ( $\text{m s}^{-1} \text{ day}^{-1}$ )	$\equiv 0.0$
$\ddot{\gamma}$	Quadratic acceleration ( $\text{m s}^{-1} \text{ day}^{-2}$ )	$\equiv 0.0$
$\sigma_{\text{HIRES}}$	Jitter ( $\text{m s}^{-1}$ )	$1.85^{+0.43}_{-0.37}$
$\sigma_{\text{HARPS-N}}$	Jitter ( $\text{m s}^{-1}$ )	$1.43^{+0.85}_{-0.67}$
$\eta_{1, \text{HIRES}}$	Amplitude of covariance ( $\text{m s}^{-1}$ )	$8.45^{+2.21}_{-1.65}$
$\eta_{1, \text{HARPS-N}}$	Amplitude of covariance ( $\text{m s}^{-1}$ )	$8.59^{+2.23}_{-1.77}$
$\eta_2$	Evolution timescale (days)	$26.09^{+3.50}_{-3.62}$
$\eta_3$	Recurrence timescale (days)	$18.66^{+0.95}_{-0.79}$
$\eta_4$	Structure parameter	$0.41 \pm 0.04$

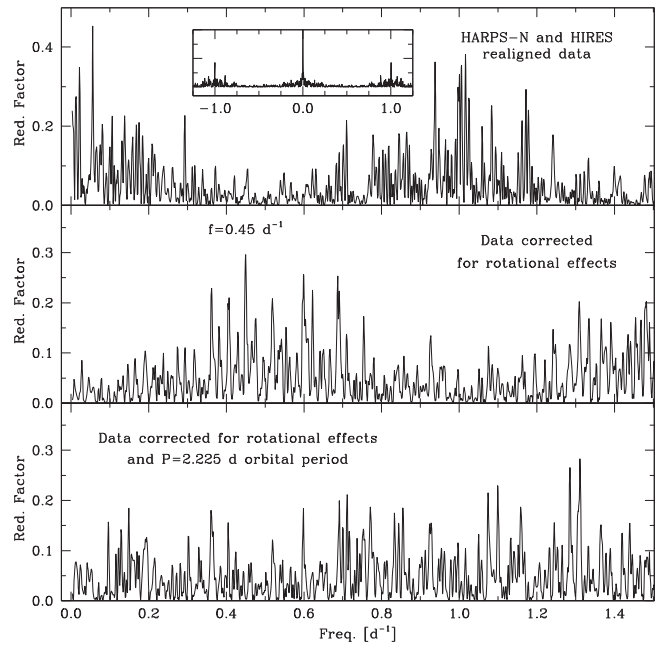
spectral window (insert in the top panel) prevents any reliable further identification.

#### 4.2. Radial Velocity Fit with RadVel

After this initial, transit-blind radial velocity analysis, we analyzed the radial velocity data using RadVel<sup>39</sup> (Fulton et al. 2018). RadVel is an open source Python package that models Keplerian orbits to fit radial velocity data by first performing a maximum-likelihood fit to the data and then determining errors through a MCMC analysis. We use the default number of walkers, number of steps, and criteria for burn-in and convergence as described in Fulton et al. (2018).

A single planet at an orbital period of  $P = 2.225177^{+6.6e-5}_{-6.8e-5}$  days was found in the *K2* photometry (Section 2); we include a Gaussian prior on the orbital period  $P$  and time of transit  $T_{\text{conj}}$  from the *K2* data (Table 1). We first modeled this system using a one-planet fit including a constant offset for each data set  $\gamma$ . This fit results in a semi-amplitude for the 2.2 day planetary signal of  $K_p = 3.1 \pm 1.7 \text{ m s}^{-1}$ .

Next, we tested models including an additional trend ( $\dot{\gamma}$ ), curvature ( $\ddot{\gamma}$ ), and eccentricity ( $e$ ,  $\omega$ ). We used the Bayesian information criteria (BIC) to evaluate if the fit improved sufficiently to justify the additional free parameters; a positive  $\Delta\text{BIC}$  indicates an improved fit. The trend is the only additional parameter which has a noticeable  $\Delta\text{BIC}$  ( $\Delta\text{BIC} = 8.29$ ); the



**Figure 5.** Top panel: power spectrum of the radial velocity data of K2-291; the spectral window is shown in the insert. Middle panel: power spectrum obtained considering a long-term trend and  $f = 0.0098 \text{ day}^{-1}$ ,  $2f$ ,  $3f$ ,  $4f$  (but not its amplitude and phase), as known constituents. The planet signal is seen at  $f = 0.45 \text{ day}^{-1}$ . Bottom panel: power spectrum obtained considering  $f$ ,  $2f$ ,  $3f$ ,  $4f$ , and the planet orbital frequency (but not their amplitudes and phases) as known constituents. No clear peaks suggesting additional signals are detected.

trend is  $\dot{\gamma} = 0.07 \pm 0.02 \text{ m s}^{-2}$ . There is nearly no change for the curvature ( $\Delta\text{BIC} = 0.84$ ) or eccentric ( $\Delta\text{BIC} = -1.90$ ) cases. All three additional parameters result in semi-amplitudes within  $1\sigma$  of the circular fit.

#### 4.3. Gaussian Process Inclusion and Training

Stellar activity of K2-291 has an appreciable effect on our measured radial velocities. As discussed in Section 3.4, there is a periodic signal in the radial velocity data that matches both the stellar rotation period determined from the *K2* data and the periodicity in the calcium H and K lines ( $S_{\text{HK}}$ ). We modeled this stellar signal simultaneously with our planet fit using a GP with the default GP model available in RadVel (S. Blunt et al. 2019, in preparation). Gaussian process (GP) regression is a nonparametric statistical technique for modeling correlated noise in data. GP regression enables the determination of physical parameter posterior distributions with uncertainties that reflect the confounding effects of stellar activity noise (e.g., Haywood et al. 2014; Grunblatt et al. 2015; López-Morales et al. 2016).

Stellar noise characteristics in GP models are controlled by a kernel function with one or more hyperparameters, but radial velocity data are often too sparse to confidently determine the values of these hyperparameters (see Faria et al. 2016 for a counterexample). To address this problem, authors in the literature use other data sources to constrain the values of the hyperparameters, then incorporate this information into the radial velocity fit as priors on the hyperparameters (e.g., Haywood et al. 2014; Rajpaul et al. 2015). In this paper, we constrain the values of the hyperparameters in our GP model using *K2* photometry.

<sup>39</sup> Available at <https://github.com/California-Planet-Search/radvel>.

We modeled the correlated noise introduced from the stellar activity using a quasi-periodic GP with a covariance kernel of the form

$$k(t, t') = \eta_1^2 \exp \left[ -\frac{(t - t')^2}{\eta_2^2} - \frac{\sin^2 \left( \frac{\pi(t - t')}{\eta_3} \right)}{\eta_4^2} \right], \quad (2)$$

where the hyper-parameter  $\eta_1$  is the amplitude of the covariance function,  $\eta_2$  is the active-region evolutionary timescale,  $\eta_3$  is the period of the correlated signal,  $\eta_4$  is the length scale of the periodic component (Haywood et al. 2014; López-Morales et al. 2016).

We explore these hyperparameters for this system by performing a maximum-likelihood fit to the *K2* light curve with the quasi-periodic kernel (Equation (2)) then determine the errors through an MCMC analysis. We find  $\gamma_{K2} = 1567969.00^{+1766.12}_{-1830.87}$ ,  $\sigma = 54.60 \pm 9.57$ ,  $\eta_1 = 4429.95^{+897.65}_{-673.95}$ ,  $\eta_2 = 25.18^{+3.50}_{-3.59}$ ,  $\eta_3 = 19.41^{+0.68}_{-1.14}$ , and  $\eta_4 = 0.42^{+0.04}_{-0.03}$ . This stellar rotation period ( $\eta_3$ ) is consistent with the results of our periodogram analysis in Section 3.4.

#### 4.4. GP Radial Velocity Fit

We then perform a radial velocity fit including a GP to account for the affects of stellar activity on our measurements. We model our GP as a sum of two quasi-periodic kernels, one for each instrument as HIRES and HARPS-N have different properties, such as wavelength ranges, that could alter the way that stellar activity affects the data. Each kernel includes identical  $\eta_2$ ,  $\eta_3$ , and  $\eta_4$  parameters but allows for different  $\eta_1$  values.

We inform the priors on these hyperparameters from the GP light curve fit (Section 4.3).  $\eta_1$  is left as a free parameter as light curve amplitude cannot be directly translated to radial velocity amplitude.  $\eta_2$  has a Gaussian prior describing the exponential decay of the spot features ( $25.18 \pm 3.59$ ).  $\eta_3$  has a Gaussian prior constrained from the stellar rotation period ( $19.14 \pm 1.14$ ).  $\eta_4$  constrains the number of maxima and minima per rotation period with a Gaussian prior ( $0.42 \pm 0.04$ ), as described in López-Morales et al. (2016). We do not include a prior on the phase of the periodic component of the stellar rotation because spot modulation tends to manifest in radial velocity data with a relative phase shift.

The planet parameters derived from our GP analysis are consistent with our original, non-GP fit within  $1\sigma$ . The uncertainty on the semi-amplitude of the planet signal has decreased by a factor of three to  $K_p = 3.33 \pm 0.59 \text{ m s}^{-1}$ . We then investigate the inclusion of additional parameters with our GP fit. All of the tested models increased the BIC value, therefore none of them justified the additional parameters. We adopt the model including the GP with no additional parameters as our best fit, all other models have results within  $1\sigma$ ; our best-fit parameters are listed in Table 4 and the fit is shown in Figure 6.

We choose to include a GP in our analysis to improve the accuracy of our results by including the affects of stellar activity. The GP was able to also improve the precision of the mass measurement by a factor of three since the planet orbital period is far from the stellar rotation period, both periods were well sampled with the data, and the stellar activity is dominated by the rotation signal.

We perform an independent radial velocity analysis using the PyORBIT code<sup>40</sup> (Malavolta et al. 2016, 2018) with results well within  $1\sigma$  with respect to those reported in Table 4.

## 5. Discussion

### 5.1. Mass, Radius, and Bulk Density

Planet compositional models and radial velocity observations of small *Kepler* planets have shown a dividing line between super-Earth and sub-Neptune planets at  $1.5\text{--}2 R_{\oplus}$  (Lopez & Fortney 2014; Marcy et al. 2014; Weiss & Marcy 2014; Dressing & Charbonneau 2015; Rogers 2015). *Kepler* planet radii also display a bimodality in sub-Neptune-sized planets that matches the location of this divide (Fulton et al. 2017). K2-291 b is near the inner edge of the divide ( $1.589^{+0.095}_{-0.072} R_{\oplus}$ ), which makes its composition particularly interesting.

As shown in the mass–radius diagram (Figure 7), the composition of K2-291 b is consistent with a silicate planet containing an iron core and lacking substantial volatiles (Zeng et al. 2016). We investigated its composition further using Equation (8) from Fortney et al. (2007), which assumes a pure silicate and iron composition, to estimate the mass fraction of each. For our mean mass and radius, the mass fraction of silicates is 0.61 and the mass fraction of iron is 0.39, similar to the 0.35 iron core mass fraction of the Earth. For a high gravity case ( $1\sigma$  low radius,  $1\sigma$  high mass), the mass fraction of silicates would be 0.39. For a low gravity case ( $1\sigma$  high radius,  $1\sigma$  low mass), the mass fraction of silicates would be 0.94. In all cases, no volatiles are needed to explain the mass and radius of K2-291 b.

We also estimated the maximum envelope mass fraction of K2-291 b through a model grid from Lopez & Fortney (2014). This grid assumes a solar metallicity envelope with a minimum envelope mass fraction of 0.1%. We generated 100,000 random samples of the envelope fraction from our normal distributions on the mass, radius, age, and flux of K2-291 b. From this, we determined that the  $3\sigma$  upper limit on the envelope fraction is 0.3%.

Similarly, *Kepler* planets within 0.15 au and smaller than  $2 R_{\oplus}$  have an envelope fraction less than 1% (Wolfgang & Lopez 2015). Figure 8 shows the relationship between density and stellar insolation for planets smaller than  $4 R_{\oplus}$ . K2-291 b exhibits a density similar to other small, close-in planets.

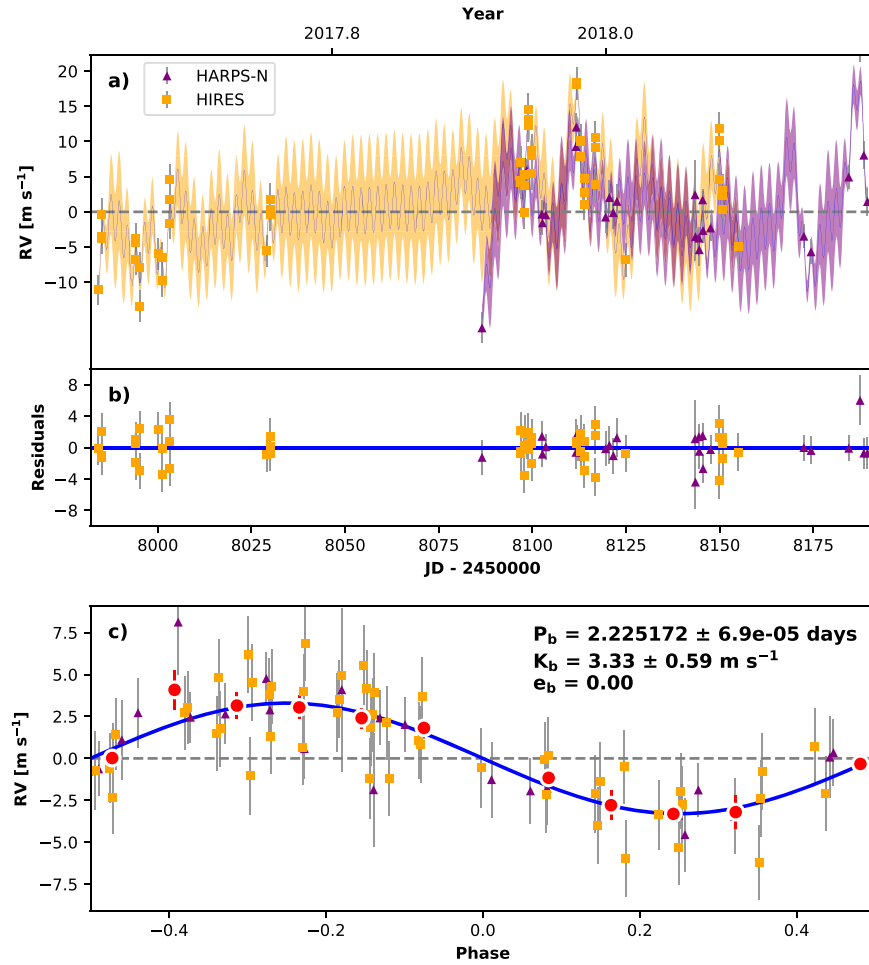
### 5.2. Photoevaporation

K2-291 b’s lack of a substantial volatile envelope could be explained by atmospheric loss. For lower mass planets experiencing a large amount of stellar insolation, photoevaporation (hydrodynamic escape) is the dominant atmospheric loss process. Photoevaporation occurs when high-energy photons from the host star ionize and heat the atmosphere causing it to expand and escape (Owen & Wu 2013).

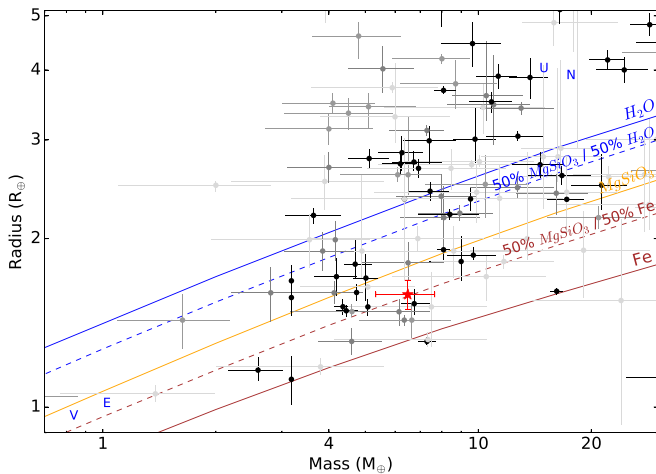
K2-291 b is potentially the core of a sub-Neptune planet that underwent photoevaporation. We cannot, however, rule out a scenario where K2-291 b formed with a high density from its onset. In that case, perhaps K2-291 b formed after the gas disk had dissipated, or giant impacts by planetesimals stripped the envelope early in its formation. Although these two scenarios cannot yet be distinguished for an individual planet, population

<sup>40</sup> Available at <http://www.github.com/LucaMalavolta/PyORBIT/>.





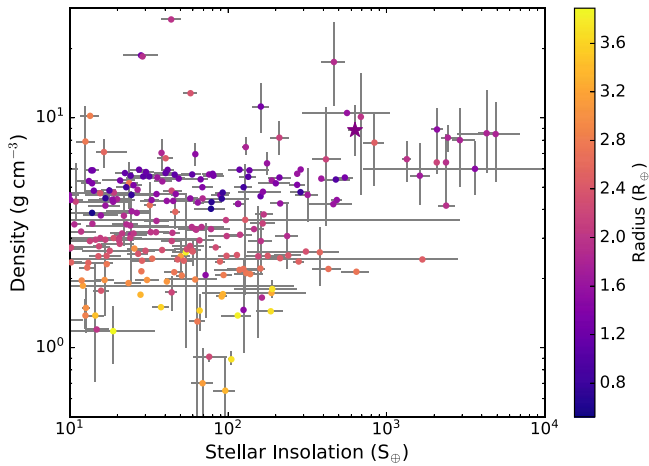
**Figure 6.** Best-fit one-planet Keplerian orbital model for K2-291. The maximum-likelihood model is plotted while the orbital parameters listed in Table 4 are the median values of the posterior distributions. The thin blue line is the best-fit one-planet model with the mean GP model. The colored area surrounding this line includes the  $1\sigma$  maximum-likelihood GP uncertainties. We add the radial velocity jitter term(s) listed in Table 4 in quadrature with the measurement uncertainties for all radial velocities. (b) Residuals to the best-fit one-planet model and GP model. (c) Radial velocities phase-folded to the ephemeris of planet b. The small point colors and symbols are the same as in panel a. Red circles are the same velocities binned in 0.08 units of orbital phase. The phase-folded model for planet b is shown as the blue line.



**Figure 7.** Mass-radius diagram for planets between the size of Earth and Neptune with greater than  $2\sigma$  measurements (darker points for lower error). The lines show models of different compositions (Zeng et al. 2016), with solid lines indicating single composition planets and dashed lines for a 50/50 mixture. K2-291 b is shown as a red star along with  $1\sigma$  uncertainties. K2-291 b is consistent with a predominantly rocky composition including an iron core.

studies can be of use. Swain et al. (2018) finds two separate groups of small planets in radius-insolation-density space. One group is consistent with small solar system bodies and likely has an Earth-like formation, the other forms a bulk density continuum with sub-Neptunes and is likely composed of remnant cores produced by photoevaporation. Another large-scale approach is to look for a radius trend among close orbiting planets of different ages; a trend of smaller young planets compared to larger old planets would suggest photoevaporation. David et al. (2018) finds one such planet and Mann et al. (2017) finds seven close orbiting young planets. There is an emerging trend that these young planets are larger but more planets will need to be found to be statistically significant.

We examine here the possibility that K2-291 b formed by photoevaporation. Due to the hydrodynamic escape of the envelope for close-in planets, the boundary between complete loss and retention of 1% of the envelope is at 0.1 au for a  $6 M_{\oplus}$  planet orbiting a solar mass star (Owen & Wu 2013). K2-291 b orbits within this boundary at  $a = 0.03261 \pm 0.00044$  au. For the mass ( $M_p = 6.49 \pm 1.16 M_{\oplus}$ ) and stellar insolation ( $S_{\text{inc}} = 633^{+59}_{-56} S_{\oplus}$ ) of K2-291 b specifically, all of its hydrogen-helium should have been lost between 100 Myr and 1 Gyr,



**Figure 8.** Density vs. stellar insolation for planets with radii smaller than  $4 R_{\oplus}$ . Point color indicates the radius of the planet. K2-291 b (star) exhibits a density similar to other small, close-in planets.

depending on the original hydrogen–helium mass fraction and mass loss efficiency (Lopez & Fortney 2013). We determined an age from the HIRES spectra of  $3.7^{+3.7}_{-2.5}$  Gyr, longer than this photoevaporation timescale.

We ran additional models using the Lopez & Fortney (2014) model grid to calculate the radius K2-291 b would have with an additional hydrogen–helium envelope. Adding 0.1% H/He by mass would result in a planet radius of  $R_p = 1.82 R_{\oplus}$ . Similarly, an additional 1% or 10% would equal a radius of  $R_p = 2.2 R_{\oplus}$  or  $R_p = 3.7 R_{\oplus}$ , respectively. Therefore, a small addition of between 1% and 10% H/He would increase the radius of K2-291 b enough to move the planet across the Fulton gap to the sub-Neptune side.

Together, these analyses imply that K2-291 b may have formed as a sub-Neptune with a substantial volatile envelope and transitioned across the Fulton gap to a super-Earth planet through photoevaporation.

## 6. Conclusion

In this paper, we described the discovery and characterization of K2-291 b. From our *K2* analysis (Section 2), we discover K2-291 b, a super-Earth planet with a radius of  $R_p = 1.589^{+0.095}_{-0.072} R_{\oplus}$ . We collected follow-up AO images and spectra to characterize the stellar properties (Section 3). Our radial velocity analysis (Section 4) determined a planet mass of  $M_p = 6.49 \pm 1.16 M_{\oplus}$ .

We accounted for quasi-periodic radial velocity variations induced by the host star’s moderate activity levels using GP regression (Haywood et al. 2014; S. Blunt et al. 2019, in preparation). This improves the accuracy of our mass determination (e.g., Haywood et al. 2018). In our case, the GP framework also increases the precision of our mass determination over an uncorrelated-noise-only treatment. The increased precision likely results from favorable sampling of the rotational and active-region timescales (López-Morales et al. 2016), combined with the fact that the orbital period is very distinct from these activity timescales.

The density of K2-291 b ( $\rho = 8.84^{+2.50}_{-2.03} \text{ g cm}^{-3}$ ) is consistent with a rock and iron composition. The high density of the planet, along with the high solar flux received by the planet ( $S_{\text{inc}} = 633^{+59}_{-56} S_{\oplus}$ ), indicate that if K2-291 b formed

with a substantial envelope, it has been eroded away by photoevaporation.

This research has made use of the NASA Exoplanet Archive, which is operated by the California Institute of Technology, under contract with the National Aeronautics and Space Administration under the Exoplanet Exploration Program. A.W.H., I.J.M.C., and C.D.D. acknowledge support from the *K2* Guest Observer Program. A.W.H. acknowledges support for our *K2* team through a NASA Astrophysics Data Analysis Program grant and observing support from NASA at Keck Observatory. This work was performed in part under contract with the California Institute of Technology (Caltech)/Jet Propulsion Laboratory (JPL) funded by NASA through the Sagan Fellowship Program executed by the NASA Exoplanet Science Institute (R.D.H., C.D.D., A.V.). Some of this work has been carried out within the framework of the NCCR PlanetS, supported by the Swiss National Science Foundation. M.R.K is supported by the NSF Graduate Research Fellowship, grant No. DGE 1339067. A.C.C. acknowledges support from STFC consolidated grant number ST/M001296/1. D.W.L. acknowledges partial support from the *Kepler* mission under NASA Cooperative Agreement NNX13AB58A with the Smithsonian Astrophysical Observatory. X.D. is grateful to the Society in Science-Branco Weiss Fellowship for its financial support. C.A.W. acknowledges support by STFC grant ST/P000312/1. L.M. acknowledges the support by INAF/Frontiera through the Progetti Premiali funding scheme of the Italian Ministry of Education, University, and Research.

This material is based upon work supported by the National Aeronautics and Space Administration under grants No. NNX15AC90G and NNX17AB59G issued through the Exoplanets Research Program. The research leading to these results has received funding from the European Union Seventh Framework Programme (FP7/2007-2013) under grant Agreement No. 313014 (ETA-EARTH). The HARPS-N project has been funded by the Prodex Program of the Swiss Space Office (SSO), the Harvard University Origins of Life Initiative (HUOLI), the Scottish Universities Physics Alliance (SUPA), the University of Geneva, the Smithsonian Astrophysical Observatory (SAO), and the Italian National Astrophysical Institute (INAF), the University of St Andrews, Queen’s University Belfast, and the University of Edinburgh. This paper includes data collected by the *Kepler* mission. Funding for the *Kepler* mission is provided by the NASA Science Mission directorate. Some of the data presented in this paper were obtained from the Mikulski Archive for Space Telescopes (MAST). STScI is operated by the Association of Universities for Research in Astronomy, Inc., under NASA contract NAS5-26555. Support for MAST for non-*HST* data is provided by the NASA Office of Space Science via grant NNX13AC07G and by other grants and contracts. This research has made use of NASA’s Astrophysics Data System and the NASA Exoplanet Archive, which is operated by the California Institute of Technology, under contract with the National Aeronautics and Space Administration under the Exoplanet Exploration Program. This research has made use of the corner.py code by Dan Foreman-Mackey at [github.com/dfm/corner.py](https://github.com/dfm/corner.py). This publication received support from a grant from the John Templeton Foundation. The opinions expressed are those of the authors and do not necessarily reflect the views of the John Templeton Foundation.

The authors wish to recognize and acknowledge the very significant cultural role and reverence that the summit of Maunakea has always had within the indigenous Hawaiian community. We are most fortunate to have the opportunity to conduct observations from this mountain.

*Facilities:* Kepler/K2 Keck TNG:HARPS-N.

*Software:* batman (Kreidberg 2015), corner.py (Foreman-Mackey 2016), emcee (Foreman-Mackey et al. 2013), isoclassify (Huber et al. 2017), k2phot, scipy (Jones et al. 2001), PyORBIT (Malavolta et al. 2016, 2018), RadVel (Fulton et al. 2018), ReaMatch algorithm (Kolbl et al. 2015), SpecMatch-Syn (Petigura 2015), Spectroscopy Made Easy (SME) (Valenti & Piskunov 2012; Piskunov & Valenti 2017), TERRA algorithm (Petigura et al. 2018).

### ORCID iDs

Molly R. Kosiarek  <https://orcid.org/0000-0002-6115-4359>  
 Sarah Blunt  <https://orcid.org/0000-0002-3199-2888>  
 Evan Sinukoff  <https://orcid.org/0000-0002-5658-0601>  
 Erik A. Petigura  <https://orcid.org/0000-0003-0967-2893>  
 Ennio Poretti  <https://orcid.org/0000-0003-1200-0473>  
 Luca Malavolta  <https://orcid.org/0000-0002-6492-2085>  
 Andrew W. Howard  <https://orcid.org/0000-0001-8638-0320>  
 Howard Isaacson  <https://orcid.org/0000-0002-0531-1073>  
 Raphaëlle D. Haywood  <https://orcid.org/0000-0001-9140-3574>  
 Andrew Collier Cameron  <https://orcid.org/0000-0002-8863-7828>  
 David Charbonneau  <https://orcid.org/0000-0002-9003-484X>  
 Courtney D. Dressing  <https://orcid.org/0000-0001-8189-0233>  
 Benjamin J. Fulton  <https://orcid.org/0000-0003-3504-5316>  
 Lea A. Hirsch  <https://orcid.org/0000-0001-8058-7443>  
 David W. Latham  <https://orcid.org/0000-0001-9911-7388>  
 Annelies Mortier  <https://orcid.org/0000-0001-7254-4363>  
 Joshua E. Schlieder  <https://orcid.org/0000-0001-5347-7062>  
 Andrew Vanderburg  <https://orcid.org/0000-0001-7246-5438>  
 Lauren Weiss  <https://orcid.org/0000-0002-3725-3058>  
 Aldo S. Bonomo  <https://orcid.org/0000-0002-6177-198X>  
 Lars A. Buchhave  <https://orcid.org/0000-0003-1605-5666>  
 Xavier Dumusque  <https://orcid.org/0000-0002-9332-2011>  
 Emilio Molinari  <https://orcid.org/0000-0002-1742-7735>  
 Giampaolo Piotto  <https://orcid.org/0000-0002-9937-6387>  
 Dimitar Sasselov  <https://orcid.org/0000-0001-7014-1771>  
 Damien Ségransan  <https://orcid.org/0000-0003-2355-8034>  
 Alessandro Sozzetti  <https://orcid.org/0000-0002-7504-365X>

### References

Aigrain, S., Parviainen, H., & Pope, B. J. S. 2016, *MNRAS*, 459, 2408  
 Baranne, A., Queloz, D., Mayor, M., et al. 1996, *A&AS*, 119, 373

Brewer, J. M., Fischer, D. A., Valenti, J. A., & Piskunov, N. 2016, *ApJS*, 225, 32  
 Butler, R. P., Marcy, G. W., Williams, E., et al. 1996, *PASP*, 108, 500  
 Choi, J., Dotter, A., Conroy, C., et al. 2016, *ApJ*, 823, 102  
 Cosentino, R., Lovis, C., Pepe, F., et al. 2012, *Proc. SPIE*, 8446, 84461V  
 Cosentino, R., Lovis, C., Pepe, F., et al. 2014, *Proc. SPIE*, 9147, 91478C  
 Crossfield, I. J. M., Ciardi, D. R., Petigura, E. A., et al. 2016, *ApJS*, 226, 7  
 David, T. J., Mamajek, E. E., Vanderburg, A., et al. 2018, *AJ*, 156, 302  
 Dotter, A. 2016, *ApJS*, 222, 8  
 Dressing, C. D., & Charbonneau, D. 2015, *ApJ*, 807, 45  
 Dumusque, X., Udry, S., Lovis, C., Santos, N. C., & Monteiro, M. J. P. F. G. 2011, *A&A*, 525, A140  
 Faria, J. P., Haywood, R. D., Brewer, B. J., et al. 2016, *A&A*, 588, A31  
 Figueira, P., Faria, J. P., Adibekyan, V. Z., Oshagh, M., & Santos, N. C. 2016, *OLEB*, 46, 385  
 Foreman-Mackey, D. 2016, *JOSS*, 1, 24  
 Foreman-Mackey, D., Hogg, D. W., Lang, D., & Goodman, J. 2013, *PASP*, 125, 306  
 Fortney, J. J., Marley, M. S., & Barnes, J. W. 2007, *ApJ*, 659, 1661  
 Fulton, B. J., & Petigura, E. A. 2018, *AJ*, 156, 264  
 Fulton, B. J., Petigura, E. A., Blunt, S., & Sinukoff, E. 2018, *PASP*, 130, 044504  
 Fulton, B. J., Petigura, E. A., Howard, A. W., et al. 2017, *AJ*, 154, 109  
 Gaia Collaboration, Brown, A. G. A., Vallenari, A., et al. 2018, *A&A*, 616, A1  
 Green, G. M., Schlafly, E. F., Finkbeiner, D., et al. 2018, *MNRAS*, 478, 651  
 Grunblatt, S. K., Howard, A. W., & Haywood, R. D. 2015, *ApJ*, 808, 127  
 Hayward, T. L., Brandl, B., Pirger, B., et al. 2001, *PASP*, 113, 105  
 Haywood, R. D., Collier Cameron, A., Queloz, D., et al. 2014, *MNRAS*, 443, 2517  
 Haywood, R. D., Vanderburg, A., Mortier, A., et al. 2018, *AJ*, 155, 203  
 Howard, A. W., Johnson, J. A., Marcy, G. W., et al. 2010, *ApJ*, 721, 1467  
 Huber, D., Zinn, J., Bojsen-Hansen, M., et al. 2017, *ApJ*, 844, 102  
 Isaacson, H., & Fischer, D. 2010, *ApJ*, 725, 875  
 Jones, E., Oliphant, T., Peterson, P., et al. 2001, SciPy: Open source scientific tools for Python, <http://www.scipy.org/>  
 Kolbl, R., Marcy, G. W., Isaacson, H., & Howard, A. W. 2015, *AJ*, 149, 18  
 Kreidberg, L. 2015, *PASP*, 127, 1161  
 Lopez, E. D., & Fortney, J. J. 2013, *ApJ*, 776, 2  
 Lopez, E. D., & Fortney, J. J. 2014, *ApJ*, 792, 1  
 López-Morales, M., Haywood, R. D., Coughlin, J. L., et al. 2016, *AJ*, 152, 204  
 Malavolta, L., Mayo, A. W., Touden, T., et al. 2018, *AJ*, 155, 107  
 Malavolta, L., Nascimbeni, V., Piotto, G., et al. 2016, *A&A*, 588, A118  
 Mann, A. W., Gaidos, E., Vanderburg, A., et al. 2017, *AJ*, 153, 64  
 Marcy, G. W., Isaacson, H., Howard, A. W., et al. 2014, *ApJS*, 210, 20  
 Mayor, M., Pepe, F., Queloz, D., et al. 2003, *Msngr*, 114, 20  
 Owen, J. E., & Wu, Y. 2013, *ApJ*, 775, 105  
 Pepe, F., Mayor, M., Rupprecht, G., et al. 2002, *Msngr*, 110, 9  
 Petigura, E. A. 2015, arXiv:1510.03902  
 Petigura, E. A., Crossfield, I. J. M., Isaacson, H., et al. 2018, *AJ*, 155, 21  
 Petigura, E. A., Schlieder, J. E., Crossfield, I. J. M., et al. 2015, *ApJ*, 811, 102  
 Piskunov, N., & Valenti, J. A. 2017, *A&A*, 597, A16  
 Rajpaul, V., Aigrain, S., Osborne, M. A., Reece, S., & Roberts, S. 2015, *MNRAS*, 452, 2269  
 Rogers, L. A. 2015, *ApJ*, 801, 41  
 Schlafly, E. F., Green, G. M., Lang, D., et al. 2018, *ApJS*, 234, 39  
 Schrijver, C. J., & Zwaan, C. 2000, *Solar and Stellar Magnetic Activity* (Cambridge: Cambridge Univ. Press)  
 Skrutskie, M. F., Cutri, R. M., Stiening, R., et al. 2006, *AJ*, 131, 1163  
 Swain, M., Estrela, R., Sotin, C., Roudier, G., & Zellem, R. 2018, arXiv:1811.07919  
 Valenti, J. A., & Piskunov, N. 2012, SME: Spectroscopy Made Easy, Astrophysics Source Code Library, ascl:1202.013  
 Vaníček, P. 1971, *Ap&SS*, 12, 10  
 Vogt, S. S., Allen, S. L., Bigelow, B. C., et al. 1994, *Proc. SPIE*, 2198, 362  
 Weiss, L. M., & Marcy, G. W. 2014, *ApJL*, 783, L6  
 Wizinowich, P., Acton, D. S., Shelton, C., et al. 2000, *PASP*, 112, 315  
 Wolfgang, A., & Lopez, E. 2015, *ApJ*, 806, 183  
 Zeng, L., Sasselov, D. D., & Jacobsen, S. B. 2016, *ApJ*, 819, 127