

## MIT Open Access Articles

*Spectrins in axonal cytoskeletons: Dynamics revealed by extensions and fluctuations*

The MIT Faculty has made this article openly available. **Please share** how this access benefits you. Your story matters.

**Citation:** Lai, Lipeng, and Jianshu Cao. "Spectrins in Axonal Cytoskeletons: Dynamics Revealed by Extensions and Fluctuations." *The Journal of Chemical Physics* 141, no. 1 (July 7, 2014): 015101. © 2014 AIP Publishing LLC

**As Published:** <http://dx.doi.org/10.1063/1.4885720>

**Publisher:** American Institute of Physics (AIP)

**Persistent URL:** <http://hdl.handle.net/1721.1/94527>

**Version:** Final published version: final published article, as it appeared in a journal, conference proceedings, or other formally published context

**Terms of Use:** Article is made available in accordance with the publisher's policy and may be subject to US copyright law. Please refer to the publisher's site for terms of use.



## Spectrins in axonal cytoskeletons: Dynamics revealed by extensions and fluctuations

Lipeng Lai and Jianshu Cao

Citation: *The Journal of Chemical Physics* **141**, 015101 (2014); doi: 10.1063/1.4885720

View online: <http://dx.doi.org/10.1063/1.4885720>

View Table of Contents: <http://scitation.aip.org/content/aip/journal/jcp/141/1?ver=pdfcov>

Published by the [AIP Publishing](#)

---

### Articles you may be interested in

[Fast and anisotropic flexibility-rigidity index for protein flexibility and fluctuation analysis](#)

*J. Chem. Phys.* **140**, 234105 (2014); 10.1063/1.4882258

[Slow dynamics of a protein backbone in molecular dynamics simulation revealed by time-structure based independent component analysis](#)

*J. Chem. Phys.* **139**, 215102 (2013); 10.1063/1.4834695

[Fluctuation power spectra reveal dynamical heterogeneity of peptides](#)

*J. Chem. Phys.* **133**, 015101 (2010); 10.1063/1.3456552

[Single molecule dynamics and statistical fluctuations of gene regulatory networks: A repressilator](#)

*J. Chem. Phys.* **126**, 034702 (2007); 10.1063/1.2424933

[Single-molecule approach to dispersed kinetics and dynamic disorder: Probing conformational fluctuation and enzymatic dynamics](#)

*J. Chem. Phys.* **117**, 11024 (2002); 10.1063/1.1521159

---



**AIP** | Journal of  
Applied Physics

*Journal of Applied Physics* is pleased to  
announce **André Anders** as its new Editor-in-Chief

# Spectrins in axonal cytoskeletons: Dynamics revealed by extensions and fluctuations

Lipeng Lai<sup>1,2</sup> and Jianshu Cao<sup>1,a)</sup>

<sup>1</sup>*Department of Chemistry, Massachusetts Institute of Technology, Cambridge, Massachusetts 02139, USA*

<sup>2</sup>*MIT-SUTD Collaboration, Massachusetts Institute of Technology, Cambridge, Massachusetts 02139, USA*

(Received 2 April 2014; accepted 16 June 2014; published online 1 July 2014)

The macroscopic properties, the properties of individual components, and how those components interact with each other are three important aspects of a composited structure. An understanding of the interplay between them is essential in the study of complex systems. Using axonal cytoskeleton as an example system, here we perform a theoretical study of slender structures that can be coarse-grained as a simple smooth three-dimensional curve. We first present a generic model for such systems based on the fundamental theorem of curves. We use this generic model to demonstrate the applicability of the well-known worm-like chain (WLC) model to the network level and investigate the situation when the system is stretched by strong forces (weakly bending limit). We specifically studied recent experimental observations that revealed the hitherto unknown periodic cytoskeleton structure of axons and measured the longitudinal fluctuations. Instead of focusing on single molecules, we apply analytical results from the WLC model to both single molecule and network levels and focus on the relations between extensions and fluctuations. We show how this approach introduces constraints to possible local dynamics of the spectrin tetramers in the axonal cytoskeleton and finally suggests simple but self-consistent dynamics of spectrins in which the spectrins in one spatial period of axons fluctuate in-sync. © 2014 AIP Publishing LLC. [<http://dx.doi.org/10.1063/1.4885720>]

## I. INTRODUCTION

The properties of a complex structure largely depends on the properties of its individual components and how these components interact with each other cooperatively in the structure. An understanding of the interplay between the three aspects are essential in various fields, such as architectures and designs of new materials. In this paper, we focus on cytoskeletons, known as dynamic biopolymer networks enclosed within the cell's membranes.

The cytoskeleton is made of different filaments with various lengths and stiffnesses. The functions of living cells largely depend on the cytoskeleton in many aspects, such as the cellular growth or locomotion. Intensive studies have been conducted for both *in vivo* and *in vitro* systems, with respect to the relationships between the macroscopic properties of the biopolymer network and the elastic properties and local structures of its components (e.g., Gardel *et al.*<sup>1</sup> and Lieleg *et al.*<sup>2</sup>). Various experimental methods, such as the neutron scattering or the small angle X-ray scattering, can be applied to measure the local structures of the cytoskeletons, or *in vitro* filamentous networks. Here, we primarily focus on the situation where a direct measurement of the dynamics of a network at the single molecule level is not available experimentally. This may be due to the smallness or complexity of the structure, or the complicated interactions involved. We specifically study the axonal cytoskeleton and demonstrate that how the observed elastic properties of the network and the single spectrin, reveal the dynamics at the level of single

molecules, in our example, the cooperative dynamics of spectrins in the axons.

The axonal cytoskeleton in neuron cells has its own special structures and functions (e.g., Dennerll *et al.*,<sup>3</sup> Hammarlund *et al.*,<sup>4</sup> and Galbraith *et al.*<sup>5</sup>). Recent experiments by Xu *et al.*<sup>6</sup> revealed the novel one-dimensional periodic cytoskeletal structure in axonal shafts, using the stochastic optical reconstruction microscopy (STORM). In such a structure, the axonal cytoskeleton resembles a hose tube periodically supported by rings that are formed by actins. Adjacent rings are connected by spectrin tetramers (Fig. 1(a)). The average and the fluctuation of the spacing between the rings are measured. We will show that, when a specific model is applied, these two quantities give us information about the dynamics of spectrins that connect two adjacent actin rings.

The model we specifically apply here is the worm-like chain (WLC) model.<sup>7,8</sup> Providing an alternative view of the WLC model, we also introduce a more generic description of the energy form when the system can be coarse-grained as a linear curve, and show that this description reduces to the WLC model under certain conditions. This alternative view supports the extended applicability of the WLC model, from single molecule level to the network level, and also provides some insights into possible modifications to current models of slender systems. To study the axonal cytoskeleton, we apply the WLC model at both the single molecule and the network levels, and utilize the relations between average extensions and longitudinal fluctuations to limit the possible dynamics of spectrins. Our approach demonstrated in this paper will be useful when the observation of the dynamics in the network at the single molecule level is limited by experimental

<sup>a)</sup>Electronic mail: [jianshu@mit.edu](mailto:jianshu@mit.edu)

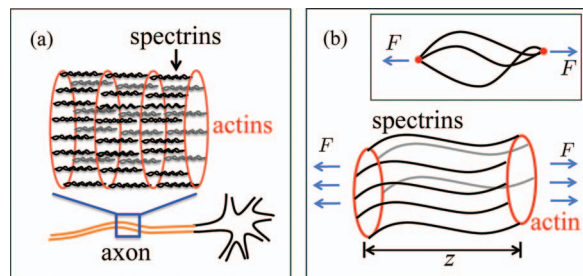


FIG. 1. Sketch of the experimental observations and model assumptions. (a) Sketch of the experimentally observed periodic structure in axonal cytoskeleton.<sup>6</sup> Actin rings (red) are connected by spectrins (black and gray) in parallel. (b) Sketch of the possible configurations and dynamics of the spectrin tetramers in the axonal cytoskeleton. Main figure: all the spectrins in the same period are considered to bend in sync (see texts for details). Inset: illustration of the case when spectrins fluctuate independently with the relative positions of their ends on each side fixed.

techniques. We hope this approach can facilitate the study of other systems, when they are slender and can be coarse-grained as linear curves.

This paper is structured in the following way. In Sec. II, we will first introduce the generic model when the composited network is coarse-grained as a single smooth curve. We will show explicitly that this model reduces to the WLC model under certain conditions. Then in Sec. III, analytical results from the WLC model are presented in the strong-stretching limit (one realization of the weakly bending limit), focusing on the relations between the extensions and fluctuations projected to the force direction. The results will be applied to the axonal cytoskeleton to demonstrate how these relations at the single spectrin and cytoskeletal network levels limit the possibilities of the cooperative dynamics of spectrins. Finally, we will briefly discuss several relevant topics and conclude our main results.

## II. MODEL OF A COARSE-GRAINED SLENDER SYSTEM AND ITS ENERGY

In this section, we first present a generic model for an arbitrary slender structure (a chain) in the weakly bending limit, being a single molecule or a network. The slender structure is coarse-grained as a smooth curve. This model can be reduced to the well-known WLC model under certain conditions. On the one hand, we use this model to provide an alternative understanding of the WLC model from a mathematical perspective via the fundamental theorem of curves.<sup>9,10</sup> This understanding supports the applications of the WLC model and other relevant models at different scales, ranging from single molecules to any complex systems coarse-grained as linear curves. On the other hand, this model also offers insights into what modifications we can add to the current WLC model.

Here, we use a continuous description of a linear chain (stretched or unstretched, Fig. 2). The coarse-grained system is represented by a curve  $\vec{r}(s)$ , where  $s$  marks the points on the curve and corresponds to the arc-length of the curve when it is unstretched. In a stretched state, the local strain along the curve is  $u = d\tilde{s}/ds$  where  $\tilde{s}$  is the arc-length of the stretched chain.

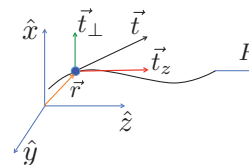


FIG. 2. Sketch of a chain stretched by a single force  $F$ . Here, a single polymer or a polymer network that is thin and long is modeled as a continuous three-dimensional curve.

In general, the energy of the coarse-grained system is a functional of the curve and can be written as

$$E = E_e[\{\vec{r}(s)\}] + E_s[\{\vec{r}(s)\}], \quad (1)$$

where  $E_e$  describes the portion of energy determined by the internal coordinate  $s$  (such as the elastic energy) and  $E_s$  depends on the global spatial coordinates (such as the hydrodynamic interactions, the excluded volume effect, or external potentials).  $\{\vec{r}(s)\}$  denotes the set of the function  $\vec{r}(s)$  and all orders of its derivatives with respect to  $s$ . Here, we focus on  $E_e$  first. Since  $E_e$  only depends on the shape of the curve and the fundamental theorem of curves states that a smooth three-dimensional curve is determined by its curvature and torsion, we can write  $E_e$  as a functional of the curvature  $\kappa(s)$ , torsion  $\tau(s)$ , and the local stretching  $\delta u(s) = u(s) - 1$ . In the limit of weakly bending and small extension, we can expand the curve around the base state, the straight line, and formally write

$$E_e = E_e^0 + \int_0^{L_0} \int_0^{L_0} ds ds' \left( \frac{1}{2} V(s)^T H(u; s, s') V(s') \right). \quad (2)$$

Here, we restrict our model to only local interactions, and thus  $V(s) = (\kappa(s), \tau(s), \delta u(s))$  and  $H = \{h_{mn}(u, s)\delta(s - s')\}$  describing the interaction strengths.  $L_0$  is the contour length of the unstretched system. It is interesting to notice how Eq. (2) corresponds to existing models. The energy due to pure bending is  $\int_0^{L_0} ds h_{11} \kappa(s)^2 / 2$  with  $\kappa(s) = [(\partial^2 \vec{r} / \partial s^2) - (\partial^2 \vec{r} / \partial s^2) \cdot (\partial \vec{r} / \partial s)(\partial \vec{r} / \partial s) / u^2] / u^2$  (e.g., Soda<sup>11</sup>) and  $h_{11}$  the bending rigidity.  $\int_0^{L_0} ds h_{33} \delta u^2 / 2$  corresponds to the elastic energy due to stretching. The terms containing the torsion  $\tau$  (e.g.,  $h_{22} \tau^2 / 2$ ) reflect more complex features of the chain's local structures. It is straightforward to see that Eq. (2) reduces to the well-known worm-like chain model<sup>7</sup> when we only take into account the bending energy (i.e.,  $\tau(s) = 0$ ,  $u(s) = 1$ ). The WLC model has been applied to different kinds of biopolymers, such as DNAs and microtubules, and has successfully explained various experimentally observed behaviors of long polymer chains, such as the force-extension relation (e.g., Marko *et al.*<sup>8</sup>) that is frequently measured in single-molecule experiments (e.g., Smith *et al.*<sup>12</sup>), the moments of the end-to-end distance distribution for a free chain (e.g., Schurr *et al.*<sup>13</sup>), to name some of them. Modifications to the WLC model are also studied extensively. For example, different modifications have been proposed to explain the experimentally observed enhanced flexibility of DNA molecules at short length scales (e.g., Yan *et al.*<sup>14</sup> and Xu *et al.*<sup>15</sup>).

Now we consider when an external force field that corresponds to a potential  $\mathcal{V}$  is applied. Examples of such force fields include the case when the system is stretched by a

single force at one end with the other end fixed or when it is immersed in a constant plug flow with one end fixed. In the single force stretching case, the potential energy can be written as  $\mathcal{V}(z) = -Fz$ , where  $F$  is the magnitude of the force and  $z$  is the displacement of the free end relative to the fixed end in the force direction. When we put the potential  $\mathcal{V}(z)$  into the WLC model, the energy now reads

$$E = \int_0^{L_0} \frac{h_{11}}{2} \kappa(s)^2 ds - \int_0^{L_0} F t_z(s) ds, \quad (3)$$

where  $t_z$  is the component of the unit tangent vector of the curve  $\vec{r}(s)$  in the force direction. Previous studies of such a system primarily focused on the relations between the average end-to-end distance or extension  $z$  as a function of the force applied.<sup>8,16,17</sup> Some of them also showed the relations between the higher moments of  $z$  as functions of the force.<sup>18</sup> But there are instances, as we show later, in which the force is not measured experimentally. In this case, we can still use the relations between the average extension  $z$  and its higher moments to obtain information from experimental data.

In Sec. III, we apply the WLC model with external force (Eq. (3)) to both single molecules and the cytoskeletal network. Then we combine the results obtained at different scales to infer the local dynamics of spectrins in the axonal cytoskeleton.

### III. EXTENSIONS AND LONGITUDINAL FLUCTUATIONS OF A STRONGLY STRETCHED INEXTENSIBLE CHAIN

#### A. Analytical solutions

The relation between the extension and variation of  $z$  can be derived from the relations between the force and the moments of  $z$ . The latter is obtained by taking successive derivatives of the partition function  $\mathcal{Z}$  of the model (Eq. (3)) with respect to the force  $F$ , where the partition function

$$\begin{aligned} \mathcal{Z} &= \int_C [D\vec{r}] \exp[-\beta E] \\ &= \int_C [D\vec{r}] \exp \left[ -\beta \int_0^{L_0} \left( \frac{h_{11}}{2} \left( \frac{d\vec{r}}{ds} \right)^2 - F t_z \right) ds \right] \end{aligned} \quad (4)$$

is a weighted sum of all possible configurations. Here,  $\beta = 1/k_B T$  with  $k_B$  the Boltzmann constant and  $T$  the temperature. In general, the partition function of a system coarse-grained as a linear curve corresponds to a path-integral.<sup>19</sup> Analytical results of  $\mathcal{Z}$  are obtained in literature via various methods, such as mean field approaches,<sup>20,21</sup> or in the weakly bending limit.<sup>16-18,22</sup> Here, related to the axon cytoskeleton, we are specifically interested in the limit when the force  $F$  is strong, which is an example of the weakly bending limit. In this limit, the transverse fluctuations (fluctuations perpendicular to the force direction) are largely suppressed. The  $z$ -component of the tangent vector dominates the other two components in  $x$  and  $y$  directions, i.e.,  $t_x \sim t_y \ll t_z$ . Because  $|\vec{r}| = 1$ , we have  $t_z \approx 1 - (t_x^2 + t_y^2)/2$ . With this approximation, the partition function  $\mathcal{Z}$  can be solved analytically

by different techniques, such as by using the equal-partition theorem,<sup>8,17,18</sup> or by using path-integral techniques.<sup>16,22</sup> The final analytical expression of  $\mathcal{Z}$  also depends on the boundary conditions we choose. In our case, since the spectrins form the wall of the tube of axons, without further experimental observations, it is natural to assume that the spectrins bind to actin rings with a right angle. Based on this symmetry argument, we have  $t_x = t_y = 0$  at both ends ( $s = 0$  and  $L_0$ ) as our boundary conditions. It should be noted that, since different boundary conditions impose different constraints on the entropy, they may lead to measurable differences in the force-extension curve, especially when the contour length  $L_0$  is comparable to the persistence length  $l_p$ . Here, the persistence length  $l_p = \beta h_{11}$  describes the competition between the bending energy and thermal energy and defines the correlation length between two tangent vectors along the curve. The effects of different boundary conditions are discussed in details in previous studies.<sup>16-18</sup> In our case, these effects should be negligible because the spectrins have a relatively large ratio of the contour length to the persistence length ( $\sim 10$ ) and these effects are less significant when the force increases. However, more detailed experimental measurements may reveal such small differences and it will be interesting for future investigations.

With all the conditions specified, using path-integral techniques, we obtain the partition function

$$\mathcal{Z} = e^{\beta F L_0} \mathcal{Z}_t^2 = e^{\beta F L_0} (h_{11} F)^{1/2} \left( \frac{\beta}{2\pi \sinh \sqrt{F L_0^2 / h_{11}}} \right). \quad (5)$$

Detailed calculations can be found in the Appendix for completeness. The  $n$ th moment of  $z$  can be obtained by taking successive derivatives of the partition function  $\mathcal{Z}$  with respect to the force  $F$

$$\langle z^n \rangle = \frac{1}{\mathcal{Z}} \frac{\partial^n \mathcal{Z}}{\partial (\beta F)^n}. \quad (6)$$

Applying Eq. (6) at  $n = 1$ , we obtain the average fractional extension of the chain

$$\frac{\langle z \rangle}{L_0} = 1 - \frac{1}{2\beta} \left( \frac{1}{\sqrt{h_{11} F}} \coth \left( \sqrt{\frac{F}{h_{11}}} L_0 \right) - \frac{1}{F L_0} \right). \quad (7)$$

In the strong-stretching (large force) limit, we only keep the leading terms ( $\sim 1/\sqrt{F}$ ). So we have

$$\frac{\langle z \rangle}{L_0} = 1 - \frac{1}{2\beta} \left( \frac{1}{\sqrt{h_{11} F}} \right) = 1 - \frac{1}{2\sqrt{\beta l_p F}}, \quad (8)$$

which agrees with previous calculations.<sup>8,16</sup> Fig. 3(a) shows the comparison between Eq. (8) and the approximated interpolation formula from Marko and Siggia,<sup>8</sup> and they agree with each other in the large force region  $\beta l_p F > 1$  as one should expect. This is the regime ( $\beta l_p F > 1$ ) where Eqs. (7) and (8) hold because of the strong-stretching approximation used in calculating the partition function.

Similarly, for the fluctuations (the second cumulant)  $\langle \Delta z^2 \rangle \equiv \langle z^2 \rangle - \langle z \rangle^2$ , we have



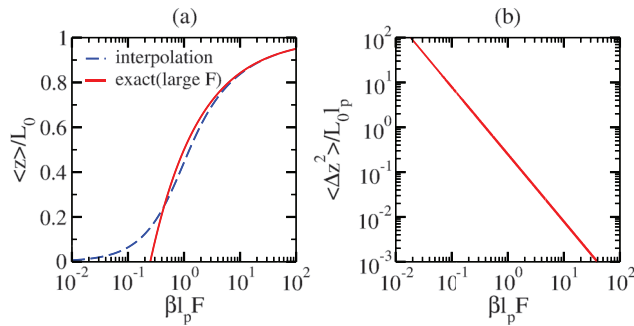


FIG. 3. First two cumulants of the projected end-to-end distance as functions of the external force  $F$ . (a) The relative average extension  $\langle z \rangle / L_0$  as a function of the dimensionless force  $\beta l_p F$  (red solid curve). The blue dashed curve is the approximated interpolation formula  $\beta l_p F = \frac{\langle z \rangle}{L_0} + \frac{1}{4(1 - \langle z \rangle / L_0)^2} - \frac{1}{4}$  by Marko and Siggia.<sup>8</sup> It shows that, as we expect, these two results agree in the large force region ( $\beta l_p F > 1$ ). (b) The dimensionless variance  $\langle \Delta z^2 \rangle / (L_0 l_p)$  as a function of the dimensionless force  $\beta l_p F$ . In the large force region, the variance decays as  $F^{3/2}$ .

$$\begin{aligned} \langle \Delta z^2 \rangle &= \frac{1}{\beta} \frac{\partial}{\partial F} \left( \frac{1}{\beta} \frac{\partial \ln Z}{\partial F} \right) = \frac{1}{\beta} \frac{\partial \langle z \rangle}{\partial F} \\ &= \frac{L_0 l_p}{4 (\beta l_p F)^{3/2}} \coth \left( \sqrt{\frac{F \beta}{l_p}} L_0 \right) + O \left( \frac{1}{F^2} \right). \end{aligned} \quad (9)$$

Again, in the strong-stretching limit, we have (Fig. 3(b))

$$\langle \Delta z^2 \rangle = \frac{L_0 l_p}{4 (\beta l_p F)^{3/2}}. \quad (10)$$

In principle, all the cumulants (or moments) of  $z$  can be generated from Eq. (5).

The force  $F$  is not directly measured in the axon experiment.<sup>6</sup> From Eqs. (8) and (10), we eliminate the dependence on the force  $F$  and obtain that

$$\langle \Delta z^2 \rangle = 2 L_0 l_p \left( 1 - \frac{\langle z \rangle}{L_0} \right)^3. \quad (11)$$

This relation includes two parameters: the contour length  $L_0$  and the persistence length  $l_p$ , which are the material properties of the spectrin. Equation (11) is consistent with the scaling analysis discussed by Odijk<sup>23</sup> when the longitudinal dispersion of DNA in nano-channels is studied. The scaling argument establishes a sixth power law between the longitudinal variance  $\langle \Delta z^2 \rangle$  and the typical angle  $\theta$  that the polymer makes with respect to the  $z$ -axis, i.e.,  $\langle \Delta z^2 \rangle \sim \theta^6$ . In Eq. (11), if we notice that  $\langle z \rangle / L_0 \sim \cos \theta$  and use  $\cos \theta \approx 1 - \theta^2/2$  in the strong-stretching or weakly bending limit, we get the same sixth power law as the scaling argument. Fig. 4(a) shows the fluctuation  $\langle \Delta z^2 \rangle$  as a function of the average extension  $\langle z \rangle$ .

## B. Application to experimental observations

The relation between the extension and variation of  $z$  (Eq. (11)) applies to both single polymers and polymer networks when the system can be coarse-grained as a linear smooth curve. Here, we demonstrate how we can apply the results to experimental observations and obtain the information of local configurations of the axonal cytoskeleton.

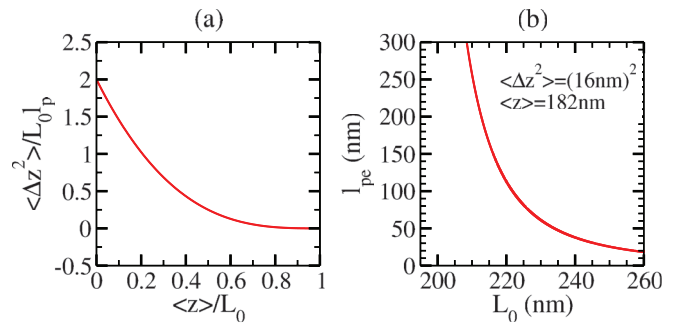


FIG. 4. The relation between the first two cumulants and its constraint on the contour length  $L_0$  and the persistence length  $l_{pe}$ . (a) The relation between the dimensionless variance  $\langle \Delta z^2 \rangle / L_0 l_p$  and the relative average extension  $\langle z \rangle / L_0$ . (b) Given the average extension  $\langle z \rangle$  and variance  $\langle \Delta z^2 \rangle$  from experiments,<sup>6</sup> this curve shows the relation between the persistence length  $l_{pe}$  and the contour length  $L_0$ . Here,  $l_{pe}$  is the effective persistence length for a bundle of spectrins.

The example we are interested in here is the recent observation of the one-dimensional periodic structure in the axonal cytoskeleton.<sup>6</sup> In such a structure, the axonal cytoskeleton resembles a hose tube periodically supported by rings that are formed by actins. Adjacent rings are connected by bundles of spectrin tetramers (Fig. 1(a)). However, little is known about the dynamics of the spectrins in such a network and how the interactions between spectrins and other components of the cell (such as the membrane) affect the elastic properties of the cytoskeleton. Here, we focus on how the spectrins between two adjacent actin rings fluctuate relative to each other. Two simple but different assumptions are considered. One assumption is that the spectrins in the same period fluctuate in sync (Fig. 1(b)). Mathematically, this means that for any two spectrins between the same pair of actin rings, we have  $\vec{r}_1(s) = \vec{r}_2(s)$  and  $\frac{d\vec{r}_1}{ds}(s) = \frac{d\vec{r}_2}{ds}(s)$  where the subscripts 1 and 2 differentiate the two spectrins in the same period. The physical consequence of this assumption is that now we can consider the spectrins in one spatial period as a bundle, which behaves like a single chain with a new effective bending rigidity  $h'_{11}$ . Since they bend in the same way, the bending energy of the bundle will be  $N$  times that of a single spectrin, where  $N$  is the total number of spectrins in the bundle. Thus, we have  $h'_{11} = N h_{11}^s$  and hence an effective persistence length for the bundle  $l_{pe} = N l_p^s$ , where  $h_{11}^s$  and  $l_p^s$  are the bending rigidity and persistence length of one single spectrin tetramer, respectively. The other assumption is that even though the ends on each side of the spectrins are held relatively fixed to each other, they can fluctuate independently in between (inset of Fig. 1(b)). In this case, the entropy increases linearly with the number of spectrins. Thus, with an increasing number of spectrins, the stronger entropic effect implies a shorter effective persistence length. Later we will show that the experimental observations support the first assumption. In both cases, we assume that the spectrins have the same contour length  $L_0$ . To make a quantitative comparison with the experiment, we further assume that the spectrins have a fixed connection with the actins with a right angle, and the forces acting on the spectrins can be effectively considered as from the actin rings at the ends and the average direction of the forces are perpendicular

to the rings. We also assume that the planes of the actins are parallel to each other, which implies that the spacing between adjacent rings represents the end-to-end distance of the spectrins in the force direction. The experimental measurements<sup>6</sup> suggest that the average end-to-end distance projected to the force direction is about 182 nm. This is close to the contour length of the spectrin tetramer ( $\sim 200$  nm),<sup>24–26</sup> and we expect that our calculation in the strong-stretching limit should apply. Some of the assumptions may not seem obvious without further experimental data. Our point here is to demonstrate how the analytical results can be applied to both the single molecule and cytoskeleton levels to infer the dynamics of the components in the cytoskeletal network. The limitations of those assumptions will be discussed in Sec. IV.

Using the experimentally measured average spacing 182 nm as  $\langle z \rangle$  and the variance of the spacing  $(16 \text{ nm})^2$  as  $\langle \Delta z^2 \rangle$ , a relationship between the contour length  $L_0$  and the effective persistence length  $l_{pe}$  is plotted in Fig. 4(b) using Eq. (11). This curve represents a constraint that is put on the possible values of  $L_0$  and  $l_{pe}$  by experimental measurements. It shows that if we use a contour length of spectrins around 200 nm, then the experimental measurements predict an effective persistence length of the axon cytoskeleton much larger than the persistence length of single spectrin that is only around 10 – 20 nm. Thus, experimental observations support the first assumption that the spectrins fluctuate in-sync in one spatial period. The reason of this dynamics is unknown and probably has its root in the interaction between spectrins and other components in the cell, such as the membrane or the microtubules. To further check if this in-sync-fluctuation assumption is consistent with experiments, we use the contour length  $L_0$  and the persistence length  $l_p$  for single spectrins from literatures<sup>24–26</sup> and the measured average extension<sup>6</sup>  $\langle z \rangle = 182$  nm to predict the variance  $\langle \Delta z^2 \rangle$  using Eq. (11) (Table I). To get the effective persistence length  $l_{pe}$ , we make a rather rough estimation of  $N = 12$  as an approximated total number of spectrins between two adjacent actin rings. Experiments suggest that  $N$  is the order of 10, and since we are only checking the consistency here, slightly varying the value of  $N$  will not affect the results shown in Table I qualitatively.

The difference in the predicted fluctuations  $\langle \Delta z^2 \rangle$  in Table I is probably due to different experiment or simulation setups. But more importantly, Table I shows that the experimentally observed variance  $(16 \text{ nm})^2$  falls between the fluctuations predicted by Eq. (11), implying the consistency between the experiments and our model assumptions. We can also reproduce the variance of  $\langle \Delta z^2 \rangle = (16 \text{ nm})^2$  with parameters very similar to those in literatures (for example, using

$L_0 = 214$  nm,  $l_p = 15$  nm,  $N = 12$ , and  $\langle z \rangle = 182$  nm, we get  $\langle \Delta z^2 \rangle = (16 \text{ nm})^2$  according to Eq. (11)).

Thus, without introducing further complexity or more subtle mechanism, we demonstrate that combining the relations between extensions and fluctuations at both the single molecule and cytoskeleton levels help us understand more about the dynamics of spectrins in the axonal cytoskeleton. Although we cannot rule out other possibilities, here we use the theoretical results to provide a possible simple explanation to the experimentally observed longitudinal fluctuations in the axonal cytoskeleton.

## IV. DISCUSSIONS

Several topics deserve further discussions here. First of all, when we apply our analytical results to the specific experiments of axonal cytoskeletons, the details of the interactions between the cytoskeleton and other components of the axon are ignored. However, the conclusion that the assumption of in-sync fluctuations of the spectrin tetramers, as one of possible configurations, is self-consistent may imply that the averaged effect of those interactions at leading order is to keep the spectrins fluctuates in sync. Here, we consider that the experimentally measured fluctuations is purely caused by the thermal fluctuations of the spectrins. But in reality, the fluctuations observed should include contributions from all aspects, and only set an upper bound for the thermal fluctuations of spectrins. In this paper, we used a largely simplified setup to demonstrate the idea of how the macroscopic elastic properties of a coarse-grained chain put constraints on its local dynamics and obtained a self-consistent result. A more subtle modeling will definitely be useful with future experimental support. It should be noted again that we cannot rule out other possibilities solely using the theory, but the conclusion here may provide some hints of what to look for in future investigations.

It should also be mentioned that the system we studied corresponds to an isotensional ensemble (or Gibbs ensemble). Its counter part is the isometric ensemble (or Helmholtz ensemble), in which the end-to-end distance is fixed a constant and the force fluctuates. The equivalence of these two ensembles are discussed in previous studies,<sup>27,28</sup> especially in the thermodynamic limit. In a biological system, such as the axon cytoskeleton, one would expect both the end-to-end distances and the forces fluctuate. At current stage, the differences between the two ensembles for systems with finite length will not alter our conclusion here. But a realization of the isometric ensemble and more precise experimental measurements will determine the more appropriate boundary conditions *in vivo*.

Here, we studied the relations between the extensions and fluctuations when a slender object is stretched at the end. It will be intriguing to understand such relations in a more general setup. Examples include the case when the system is influenced by external flows or electric fields. Experimental, numerical, and analytical studies have been performed in this direction (e.g., Perkins *et al.*,<sup>29</sup> Smith *et al.*,<sup>30</sup> Manca *et al.*,<sup>31</sup> and Yang *et al.*<sup>22</sup>). Stretching polymers using external fields is also an crucial technique in manipulating single molecules.<sup>32–34</sup> In future studies, we will focus on how our

TABLE I. The fluctuations predicted by Eq. (11) using contour lengths and persistence lengths from literatures.<sup>24–26</sup> We assume  $N = 12$  as the approximated total number of spectrins in one spatial period and use  $\langle z \rangle = 182$  nm for the average extension.<sup>6</sup>

$L_0$ (nm)	$l_p$ (nm)	$l_{pe}$ (nm)	$\sqrt{\langle \Delta z^2 \rangle}$ (nm)	Ref.
200	16.4	196.8	7.6	Stokke <i>et al.</i> <sup>24</sup>
200	10	120	6	Svoboda <i>et al.</i> <sup>25</sup>
237.75	7.5	90	23.5	Li <i>et al.</i> <sup>26</sup>

approaches presented here can help understand the dynamics of biopolymer networks influenced by external fields.

As a goal for longer terms, we would like to know how the local structures and dynamics are related to the specific functions of certain biological systems. For example, for the axonal cytoskeleton, similar structures have been noticed in different situations, such as the skeleton of snakes or the structure of hoses. As an analogy to those structures, in neuron cells, the periodic actin rings may provide support against the bending or transverse compression of the axons. But it deserves further investigations to understand how the axon benefits from the specific structure of the actin-spectrin network. If the actin-spectrin network helps stabilize the membrane, then we can ask whether the spacing between and the radius of the ring (or the ratio between these two) observed experimentally correspond to an optimal solution of a certain underlying mechanism, such as the buckling instability. From a Physicist's perspective, if similar cytoskeletal structure exists in other organisms, it will be more intriguing to see whether the ratio between the ring's spacing and radius is universal across different organisms. If the answer is yes, then it is natural to ask what mechanism dictates this ratio.

Finally, although we specifically apply our results to the axonal cytoskeleton, our derivations are based on a slightly more general setup. We expect that our results may facilitate the study of other biological or physical structures where the composited system can be coarse-grained as a single smooth curve. On the other hand, in this paper we treat the fluctuations as purely thermal. But it is known that, in a living cell, the dynamical process is rather active with energy input (e.g., from ATP) and dissipation (e.g., Kim *et al.*<sup>35</sup>). So *in vivo*, the configurational fluctuations may be affected by the energy input rate, such as the ATP concentration. However, the same approach applied in this paper may also be used in such an active system. Given the observed fluctuations and the elastic properties of the components, the details of the active process may be revealed (e.g., Kim *et al.*<sup>35</sup>).

## V. CONCLUSION

To conclude, we investigated the interplay between the macroscopic properties of a composited system, the elasticity of its components and their local dynamics. We focus on slender systems that can be coarse-grained as linear curves. A generic model for such systems was introduced based on the fundamental theorem of curves. This model provides an alternative view of the well-known WLC model from a mathematical perspective and supports the applications of the WLC model at different scales, ranging from single molecules to complex networks. Then we applied the WLC model to both axonal cytoskeletons and individual spectrins, one component of the axonal cytoskeletons. Different from previous studies that primarily focus on the relations between forces and polymer conformations, we utilized the relations between the fluctuations and average extensions to understand the experiments where the force was not measured. Combining such relations on both the spectrin and the cytoskeleton levels suggest a simple but self-consistent local dynamics of spectrins, in which all the spectrins in one spatial period in the axonal

cytoskeleton fluctuate in-sync. Although the validity of this dynamics requires further experimental and theoretical investigations, we used it as one example that shows how we can apply the WLC model or relevant models at different scales of slender systems and extract information from the comparison between theoretical predictions and experimental observations. We hope that the models and ideas presented here will help further studies of biological or physical polymer networks that can be coarse-grained as linear curves, and improve our understanding of the relations between the macroscopic and microscopic dynamics of complex systems.

## ACKNOWLEDGMENTS

We thank Dr. Ke Xu for helpful discussions and inspiring comments, and also thank Dr. Xinliang Xu for suggestions. We acknowledge the financial assistance of Singapore-MIT Alliance for Research and Technology (SMART), National Science Foundation (NSF) (CHE-1112825), and the Graduate Fellows Program by Singapore University of Technology and Design and MIT (to L.L.).

## APPENDIX: ANALYTICAL RESULTS OF THE PARTITION FUNCTION

For completeness, here we outline the key steps in calculating the partition function  $\mathcal{Z}$ . More details can be found in literatures.<sup>16,17,19,22</sup> With the approximation  $t_z \approx 1 - (t_x^2 + t_y^2)/2$ , the fluctuations in transverse directions (i.e.,  $x$  and  $y$ ) are decoupled and we can write the partition function (Eq. (4)) as

$$\mathcal{Z} = e^{\beta FL_0} \mathcal{Z}_x \mathcal{Z}_y, \quad (\text{A1})$$

where  $\mathcal{Z}_x$  and  $\mathcal{Z}_y$  have the same form,

$$\begin{aligned} \mathcal{Z}_x &= \mathcal{Z}_y \equiv \mathcal{Z}_t \\ &= \int_C [Dt] \exp \left[ -\beta \left( \frac{h_{11}}{2} \int_0^{L_0} \left( \frac{dt}{ds} \right)^2 + \frac{F}{2} t^2 \right) ds \right]. \end{aligned} \quad (\text{A2})$$

It is noted that  $\mathcal{Z}_x$  and  $\mathcal{Z}_y$  resembles the path integral of a particle moving in one-dimensional harmonic potential. This is more obvious if we apply the following substitutions:

$$s \leftrightarrow i\xi, \quad \beta \leftrightarrow 1/\hbar, \quad h_{11} \leftrightarrow m, \quad F \leftrightarrow m\omega^2. \quad (\text{A3})$$

Then  $\mathcal{Z}_t$  takes exactly the form of a path integral

$$\mathcal{Z}_t = \int_C [Dt] \exp \left[ \frac{i}{\hbar} \int_0^{-iL_0} \left( \frac{m}{2} \left( \frac{dt}{d\xi} \right)^2 - \frac{m\omega^2}{2} t^2 \right) d\xi \right]. \quad (\text{A4})$$

The path integral above is one of the few examples where an analytical solution can be derived. We just use the known result here and obtain

$$\begin{aligned} \mathcal{Z}_t &= \sqrt{\frac{m\omega}{2\pi i\hbar \sin(\omega(\xi_f - \xi_i))}} \\ &\times \exp \left[ \frac{i}{2\hbar} m\omega \frac{(t_i^2 + t_f^2) \cos(\omega(\xi_f - \xi_i)) - 2t_i t_f}{\sin(\omega(\xi_f - \xi_i))} \right]. \end{aligned} \quad (\text{A5})$$



The initial and final values  $t_i$  and  $t_f$  in the equation above corresponds to the boundary conditions at the two ends of the chain. For different situations, different boundary conditions can be used, but the overall complexity of the problem will not be increased. Here, as mentioned in the main text, we choose the boundary conditions where the tangent vectors at the two ends are parallel to the force direction, i.e.,  $t_i = t_f = 0$ . Using Eq. (A3) and also noting that  $\xi_i = 0$  and  $\xi_f = -iL_0$ , we have

$$\mathcal{Z}_t = (h_{11}F)^{1/4} \left( \frac{\beta}{2\pi \sinh \sqrt{FL_0^2/h_{11}}} \right)^{1/2} \quad (\text{A6})$$

which gives the complete partition function

$$\mathcal{Z} = e^{\beta FL_0} \mathcal{Z}_t^2 = e^{\beta FL_0} (h_{11}F)^{1/2} \left( \frac{\beta}{2\pi \sinh \sqrt{FL_0^2/h_{11}}} \right). \quad (\text{A7})$$

It should be noted that the above calculations can be easily generalized to any space dimensions  $d$ .

<sup>1</sup>M. L. Gardel, J. H. Shin, F. C. MacKintosh, L. Mahadevan, P. Matsudaira, and D. A. Weitz, *Science* **304**, 1301 (2004).

<sup>2</sup>O. Lieleg, M. M. A. E. Claessens, and A. R. Bausch, *Soft Matter* **6**, 218 (2010).

<sup>3</sup>T. J. Dennerll, H. C. Joshi, V. L. Steel, R. E. Buxbaum, and S. R. Heidemann, *J. Cell Biol.* **107**, 665 (1988).

<sup>4</sup>M. Hammarlund, E. M. Jorgensen, and M. J. Bastiani, *J. Cell Biol.* **176**, 269 (2007).

<sup>5</sup>J. A. Galbraith, L. E. Thibault, and D. R. Matteson, *J. Biomech. Eng.* **115**, 13 (1993).

<sup>6</sup>K. Xu, G. Zhong, and X. Zhuang, *Science* **339**, 452 (2012).

<sup>7</sup>O. Kratky and G. Porod, *Recl. Trav. Chim. Pays-Bas* **68**, 1106 (1949).

<sup>8</sup>J. F. Marko and E. D. Siggia, *Macromolecules* **28**, 8759 (1995).

<sup>9</sup>E. Kreyszig, *Differential Geometry* (Dover Publications, New York, 1991).

<sup>10</sup>M. Carmo, *Differential Geometry of Curves and Surfaces* (Prentice-Hall, New Jersey, 1976).

<sup>11</sup>K. Soda, *J. Phys. Soc. Jpn.* **35**, 866 (1973).

<sup>12</sup>S. B. Smith, L. Finzi, and C. Bustamante, *Science* **258**, 1122 (1992).

<sup>13</sup>J. M. Schurr and B. S. Fujimoto, *Biopolymers* **54**, 561 (2000).

<sup>14</sup>J. Yan, R. Kawamura, and J. F. Marko, *Phys. Rev. E* **71**, 061905 (2005).

<sup>15</sup>X. Xu, B. J. Reginald, and J. Cao, "Correlated local bending of DNA double helix and its effect on the cyclization of short DNA fragments," e-print [arXiv:1309.7515](https://arxiv.org/abs/1309.7515).

<sup>16</sup>Y. Hori, A. Prasad, and J. Kondev, *Phys. Rev. E* **75**, 041904 (2007).

<sup>17</sup>P. K. Purohit, M. E. Arsenault, Y. Goldman, and H. H. Bau, *Int. J. Non-Linear Mech.* **43**, 1056 (2008).

<sup>18</sup>T. Su and P. K. Purohit, *J. Mech. Phys. Solids* **58**, 164 (2010).

<sup>19</sup>T. Vilgis, *Phys. Rep.* **336**, 167 (2000).

<sup>20</sup>B.-Y. Ha and D. Thirumalai, *J. Chem. Phys.* **106**, 4243 (1997).

<sup>21</sup>R. G. Winkler, *J. Chem. Phys.* **118**, 2919 (2003).

<sup>22</sup>S. Yang, J. B. Witkoskie, and J. Cao, *Chem. Phys. Lett.* **377**, 399 (2003).

<sup>23</sup>T. Odijk, "Longitudinal dispersion of DNA in nanochannels," e-print [arXiv:0911.3296](https://arxiv.org/abs/0911.3296).

<sup>24</sup>B. T. Stokke, A. Mikkelsen, and A. Elgsaeter, *Biochim. Biophys. Acta* **816**, 102 (1985).

<sup>25</sup>K. Svoboda, C. F. Schmidt, D. Branton, and S. M. Block, *Biophys. J.* **63**, 784 (1992).

<sup>26</sup>J. Li, M. Dao, C. T. Lim, and S. Suresh, *Biophys. J.* **88**, 3707 (2005).

<sup>27</sup>R. G. Winkler, *Soft Matter* **6**, 6183 (2010).

<sup>28</sup>F. Manca, S. Giordano, P. L. Palla, and F. Cleri, *Physica A* **395**, 154 (2014).

<sup>29</sup>T. T. Perkins, D. E. Smith, R. G. Larson, and S. Chu, *Science* **268**, 83 (1995).

<sup>30</sup>D. E. Smith, H. P. Babcock, and S. Chu, *Science* **283**, 1724 (1999).

<sup>31</sup>F. Manca, S. Giordano, P. L. Palla, F. Cleri, and L. Colombo, *J. Chem. Phys.* **137**, 244907 (2012).

<sup>32</sup>C. Bustamante, J. C. Macosko, and G. J. L. Wuite, *Nat. Rev. Mol. Cell Biol.* **1**, 130 (2000).

<sup>33</sup>C.-C. Hsieh and T.-H. Lin, *Biomicrofluidics* **5**, 044106 (2011).

<sup>34</sup>S. Wang and Y. Zhu, *Biomicrofluidics* **6**, 024116 (2012).

<sup>35</sup>J. H. Kim and J. Cao, "ATP-Induced Nonequilibrium Fluctuations of Human Red Blood Cell Membranes" (unpublished).