

MIT Open Access Articles

*Climate impacts of energy technologies
depend on emissions timing*

The MIT Faculty has made this article openly available. **Please share** how this access benefits you. Your story matters.

Citation: Edwards, Morgan R., and Jessika E. Trancik. "Climate Impacts of Energy Technologies Depend on Emissions Timing." *Nature Climate Change* 4, no. 5 (April 25, 2014): 347–352.

As Published: <http://dx.doi.org/10.1038/nclimate2204>

Publisher: Nature Publishing Group

Persistent URL: <http://hdl.handle.net/1721.1/96138>

Version: Author's final manuscript: final author's manuscript post peer review, without publisher's formatting or copy editing

Terms of Use: Article is made available in accordance with the publisher's policy and may be subject to US copyright law. Please refer to the publisher's site for terms of use.



Climate impacts of energy technologies depend on emissions timing

Morgan R. Edwards^{*}, Jessika E. Trancik^{*†}

Published 25 April, 2014 in *Nature Climate Change*

Abstract

Energy technologies emit greenhouse gases with differing radiative efficiencies and atmospheric lifetimes [1–3]. Standard practice for evaluating technologies, which uses the global warming potential (GWP) to compare the integrated radiative forcing of emitted gases over a fixed time horizon [4], does not acknowledge the importance of a changing background climate relative to climate change mitigation targets [5, 6]. Here we demonstrate that the GWP misvalues the impact of CH₄-emitting technologies as mid-century approaches, and we propose a new class of metrics to evaluate technologies based on their time of use. The instantaneous climate impact (ICI) compares gases in an expected radiative forcing stabilization year, and the cumulative climate impact (CCI) compares their integrated radiative forcing up to a stabilization year. Using these dynamic metrics, we quantify the climate impacts of technologies and show that high-CH₄-emitting energy sources become less advantageous over time. The impact of natural gas for transportation, with CH₄ leakage, exceeds that of gasoline within 1-2 decades for a commonly-cited 3 W/m² stabilization target. The impact of algae biodiesel overtakes that of corn ethanol within 2-3 decades, where algae co-products are used to produce biogas and corn co-products are used for animal feed. The proposed metrics capture the changing importance of CH₄ emissions as a climate threshold is approached, thereby addressing a major shortcoming of the GWP for technology evaluation [7, 8].

Comparing the climate impacts of energy technologies is challenging because they emit differing types and quantities of greenhouse gases, most notably CH₄ and CO₂, and these gases have dissimilar properties (Fig. 1a,b). Present approaches to technology evaluation use an equivalency metric to convert emissions to their CO₂-equivalent value [1–3, 9]. The most common metric is the global warming potential (GWP(τ)), which takes the ratio of the time-integrated radiative forcing of pulse non-CO₂ and CO₂ emissions over a fixed time horizon (τ), typically 100 years. The GWP(100) was initially intended as a placeholder [10], in large part because of its sensitivity to the arbitrarily selected time horizon [7] (Fig. 1c,d), but it remains the standard metric for technology evaluation.

^{*}Engineering Systems Division (ESD), Massachusetts Institute of Technology (MIT)

[†]Email: trancik@mit.edu

Various alternative metrics have been proposed for the purposes of emissions trading [11–13] and demand sector emissions evaluations [8, 14]. These metrics are formulated to make either instantaneous [15, 16] or time-integrated comparisons of gases [1, 9], based on their relative contributions to radiative forcing [1, 12], temperature change [15, 16], or economic impacts [17, 18]. Alternatively, some have argued that direct comparisons of gases are not feasible, and have called for a multi-basket emissions policy [5, 6], where similar gases are grouped into baskets and trading between baskets is prohibited.

Technologies emit multiple gases during their life cycles, however, and therefore an equivalency metric is required to compare their climate impacts on a single scale. For technology evaluation, equivalency metrics must be forward-looking and robust to inherent uncertainties about the future climate scenario, to inform the advanced commitment needed to develop new technologies and infrastructure. Determining an appropriate metric for this application is becoming increasingly urgent as we consider major public and private investments in technologies with significant CH₄ emissions, including natural gas [1, 19–22].

Although many equivalency metrics have been proposed, previous research has not emphasized testing their performance against intended climate goals to determine a principled treatment of time in metric formulations. Here we propose a new class of dynamic metrics that, unlike the static GWP(τ), are designed to avoid an overshoot of an intended radiative forcing stabilization level. We develop a method to test the performance of these and other metrics against this climate change mitigation goal. The new metrics differ from other dynamic metrics [16–18] in that they do not require detailed information about the emissions scenario for achieving the mitigation goal. Climate targets are commonly formulated around a stabilization level [23], which can be reached by a number of emissions scenarios. The proposed metrics are designed to evaluate technologies in this context.

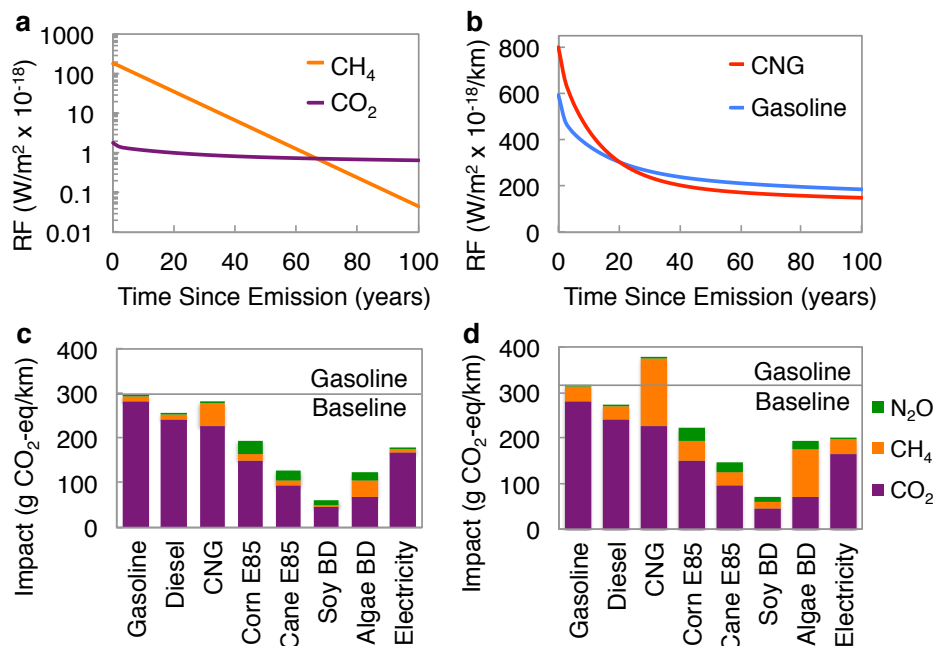


Figure 1: **Comparisons of greenhouse gases and technologies depend on the evaluation horizon.** **a**, CH_4 has 102 times the radiative forcing per gram of CO_2 but decays more quickly, with the gases having equal radiative forcing (RF) 67 years after emission [4]. **b**, As a result, the impact of using technologies decays over time at different rates, as the comparison of gasoline and CNG illustrates. **c,d**, These dynamics explain why the impacts of technologies, notably algae biodiesel with a biogas co-product, change when evaluated over a 100-year versus (c) versus a 20-year (d) time horizon. (BD, biodiesel; CNG, compressed natural gas.)

We begin by examining the GWP(100) for later comparison with the new metrics proposed. Although it has been shown that the GWP(100) leads to an imperfect equivalency when used to replace CO_2 with CH_4 [5], and can lead to economically inefficient decisions in scenarios with exogenously-constrained climate outcomes [24], its performance has not been tested against intended climate goals. We find that using the GWP(100) leads to a significant overshoot of radiative forcing stabilization targets. For example, on the basis of the GWP(100), compressed natural gas (CNG) appears to have an advantage over gasoline per kilometer traveled (Fig. 1c). However, in a hypothetical scenario in which CNG is used to meet US passenger vehicle energy demand, radiative forcing is significantly higher than GWP(100)-based projections suggest (Fig. 2a). In a scenario in which global transportation demand is supplied by an energy source with the CH_4 intensity of CNG, a stabilization target of $3\ W/m^2$ is exceeded by almost 5% (Fig. 2b), and by 12% if CH_4 emissions are maintained at their current percentage of global CO_2 -equivalent emissions. These errors become increasingly concerning over time as climate thresholds are approached.

The metrics proposed here aim to address this concern by appropriately evaluating technologies with significant CH_4 emissions. The objective is to limit the risk of a significant and sustained overshoot of an intended radiative forcing stabilization level.

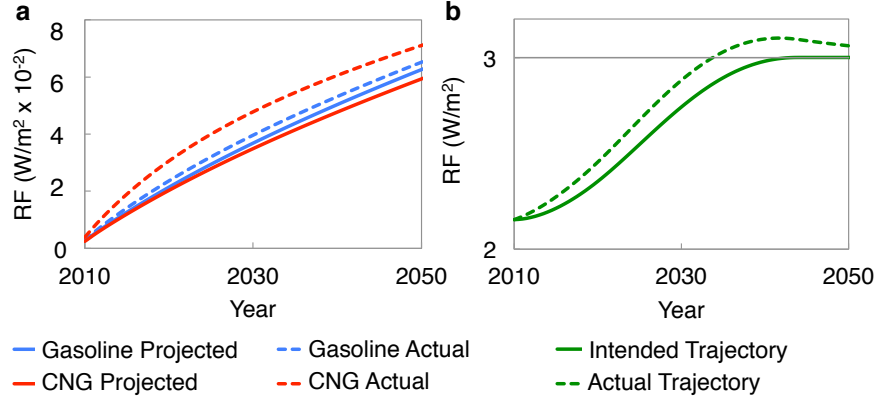


Figure 2: **GWP(100) underestimates the radiative forcing contribution of CH₄-emitting technologies.** **a**, The actual radiative forcing (RF) impacts of satisfying constant US passenger vehicle energy demand with gasoline versus CNG differ from GWP(100)-based projections, with a greater discrepancy for CNG due to its higher CH₄ intensity. **b**, A hypothetical situation is shown (based on scenario C in Fig. 3a), in which global transportation emissions are replaced by emissions from a technology with the CH₄ intensity of CNG, using the GWP(100) to determine CO₂ equivalence (Supplementary Section 1.2). This results in a significant deviation from the intended radiative forcing scenario.

The first metric, the CCI, is based on the time-integrated radiative forcing from the emission time (t') to an intended stabilization time (t_S) and the second metric, the ICI, on the radiative forcing at time t_S :

$$\text{CCI}(t', t_S) = \frac{A_M \int_{t'}^{t_S} f_M(t'', t') dt''}{A_K \int_{t'}^{t_S} f_K(t'', t') dt''} \quad \text{for all } t' \leq t_S \quad (1)$$

$$\text{ICI}(t', t_S) = \frac{A_M f_M(t_S, t')}{A_K f_K(t_S, t')} \quad \text{for all } t' \leq t_S \quad (2)$$

where A is the radiative efficiency, $f(t, t')$ is the removal function (see equation (5) in Methods), and subscripts K and M refer to CO₂ and CH₄, respectively. For emission times $t' \leq t_S$, the radiative forcing is evaluated over time t'' (from t' to t_S) for the CCI and at time t_S for the ICI. For emission times $t' > t_S$, both metrics are defined as the instantaneous radiative forcing ratio of the two gases. The CCI places a greater value on CH₄ emitted prior to t_S , after which time the two metrics are equivalent.

These dynamic metrics, in contrast to the static GWP(τ), explicitly account for climate stabilization goals in their formulation (Supplementary Section 2.1). As the emission time (t') nears the intended stabilization time (t_S), the evaluation time horizon decreases and the CO₂-equivalent value of CH₄ increases, in order to limit the overshoot of the intended stabilization level. (Any overshoot arises from CH₄ rather than CO₂ emissions, since CO₂ emissions are evaluated directly, not through an equivalency metric (Supplementary Section 3).) Unlike previously-proposed dynamic metrics (Supplementary Section 2.2), including those comparing the cost effectiveness of emissions reductions along a mitigation scenario [17]

and those based on temperature [15,16,18], the CCI and ICI are formulated so that the only input they require on the climate scenario is the intended radiative forcing stabilization level. A set of possible stabilization years is determined based on this level, giving a range of metric values for each emission year.

The approach developed to compute the metrics and test their performance is illustrated with an example below. The approach involves developing reference scenarios for emissions and radiative forcing stabilization (equations (3)-(6) in Methods and Supplementary Section 1.1), calculating metric values for the reference scenario range (equations (1) and (2) and Supplementary Section 2.1), and testing metrics against the reference scenarios (equations (7) and (8) in Methods, and Supplementary Section 1.2 and 3).

To calculate the emission-time-dependent CCI and ICI values, a range of possible scenarios is determined for a commonly cited 3 W/m^2 radiative forcing threshold (Fig. 3a), which in equilibrium is associated with a 2°C temperature change. These scenarios define a range of years when radiative forcing must stabilize to avoid exceeding 3 W/m^2 . This roughly 15-year range defines the possible values of t_S for calculating the CCI and ICI. Figure 3b shows the CCI and ICI for this range of t_S values.

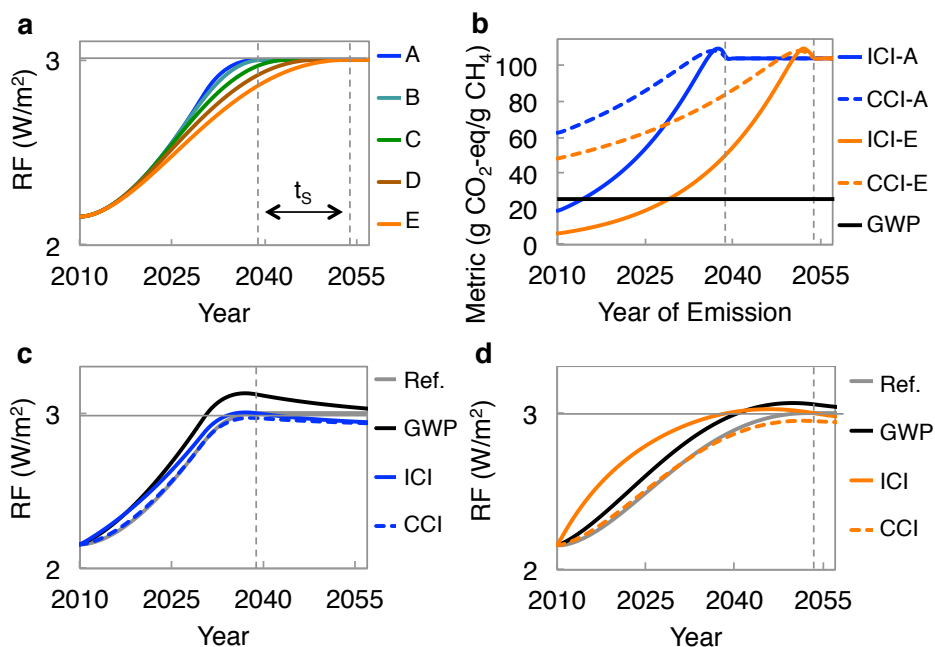


Figure 3: **Metric development.** **a**, A range of scenarios, consistent with a 3 W/m^2 stabilization level, is used to calculate equivalency metrics. They range from a delay scenario followed by rapid emissions reductions (scenario A, $t_S=2039$), to a gradual emissions reduction scenario (scenario E, $t_S=2054$). **b**, We compare the valuation of CH_4 under the ICI, CCI, and GWP(100), using A and E to represent the range of scenarios consistent with the 3 W/m^2 threshold. **c,d**, The radiative forcing resulting from using these metrics to allocate 5% of CO_2 -equivalent emissions to CH_4 is shown, using scenario A (**c**) and scenario E (**d**).

We simulate emissions decisions using the ICI, CCI, and GWP(100) to test the metrics' performance. Figure 3c,d shows the results under two scenarios that span the set of feasible

scenarios for a 3 W/m^2 stabilization level. Radiative forcing remains below 3 W/m^2 for all scenarios using the CCI but exceeds this value using the GWP(100). Using the ICI under scenario E, a gradual emissions reduction scenario with a later t_s , radiative forcing temporarily exceeds 3 W/m^2 before t_s because of a lower impact value placed on CH_4 emissions early on (Supplementary Section 3). Radiative forcing remains below this level when applying the ICI under scenario A, a delay scenario followed by rapid emissions reductions. Both the ICI and CCI avoid the sustained threshold overshoot that results from applying the GWP(100), with the ICI resulting in a temporary overshoot for some scenarios and the CCI preventing any overshoot.

Using the GWP(100) and the CCI/ICI with t_s defined by scenario C (Fig. 3a), we then compare the climate impacts of several prominent energy technologies (where technology refers to a fuel and conversion technology) that emit both CH_4 and CO_2 . Pairwise comparisons are performed for gasoline and CNG, corn ethanol and algae biodiesel (with corn co-products used for animal feed and algae co-products used to produce biogas), and coal and natural gas electricity (Fig. 4 and Supplementary Fig. S9 for other comparisons). We also generate low- CH_4 emissions scenarios for the three high- CH_4 emitters (CNG, algae biodiesel, and natural gas electricity) and compare the results to our baseline scenario (Supplementary Sections 4 and 5). Results for the low- CH_4 scenarios are indicated by curly brackets. Notably, for the two pairs of transportation technologies, the rank ordering of climate impact depends on the emissions time.

Initially the impact of CNG is lower than that of gasoline, based on the ICI, but then exceeds it in 6-21 {18-28} years, or 11 {24} years for scenario C. The more conservative CCI, in contrast, indicates higher impact of CNG for all years {after 9-21 years}. Algae biodiesel shows a significantly lower impact than corn ethanol initially, but then surpasses it in 23-38 years when applying the ICI and 21-35 years when applying the CCI, owing to CH_4 emissions in the production of biogas from algae co-products. The impact of algae biodiesel remains lower than corn ethanol for all years, however, under the low- CH_4 emissions scenario, highlighting the importance of co-product processing techniques in determining the climate impacts of biofuels. Natural gas electricity starts at 53% {52%} the climate impact of electricity from coal (using the ICI), but then rises to 82% {72%} the impact of coal over time.

We then simulate the radiative forcing resulting from several hypothetical scenarios where all US passenger vehicle energy demand is met with a single technology. These simulations approximate how technologies are assessed through the lens of each metric. Figure 5a compares the results to the sector radiative forcing budget, again determined using scenario C (from Fig. 3a). Figure 5b shows the corresponding vehicle kilometers traveled. Assessing technologies with the GWP(100) results in a large radiative forcing budget overshoot, due to relatively high energy consumption, which endures past t_s (Supplementary Section 3). Applying the ICI results in a significantly lower and more temporary overshoot that is reduced before t_s , concurrent with a decrease in energy consumption. Application of the more conservative CCI avoids a threshold overshoot and results in the lowest energy consumption.

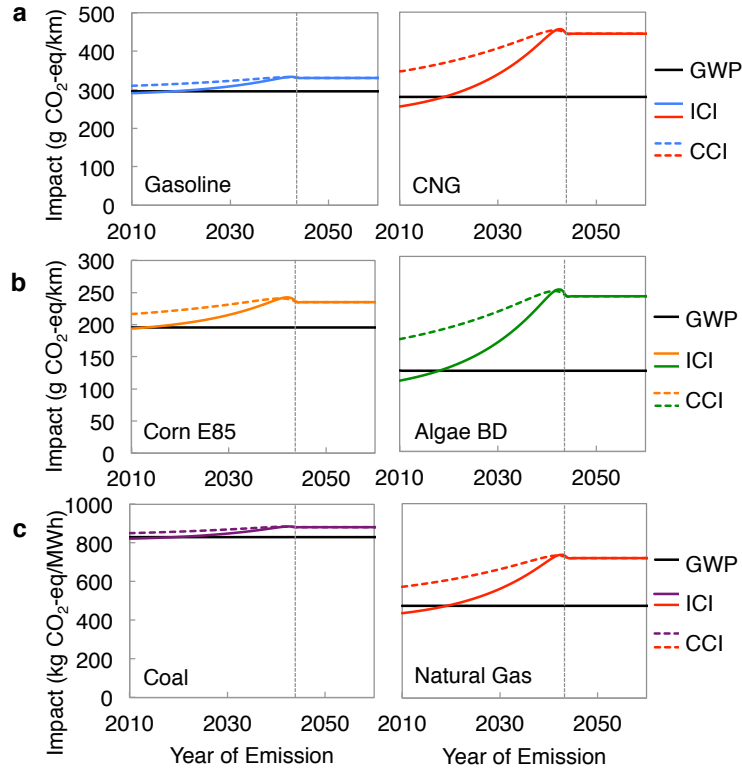


Figure 4: **Technology comparisons.** a-c, Gasoline and CNG with CH₄ leakage (a), corn ethanol without and algae biodiesel (BD) with biogas production (b), and coal- and natural gas-fired electricity (c) are compared using the GWP(100), ICI, and CCI. The relative impacts change over time. Under baseline CH₄ emissions assumptions, the impact of CNG overtakes that of gasoline after 11 years when applying the ICI using scenario C in Fig. 3a, and 6-21 years based on the full range of stabilization scenarios investigated. Algae biodiesel overtakes corn ethanol after 28 years for scenario C and the ICI, and 23-38 years based on all scenarios.

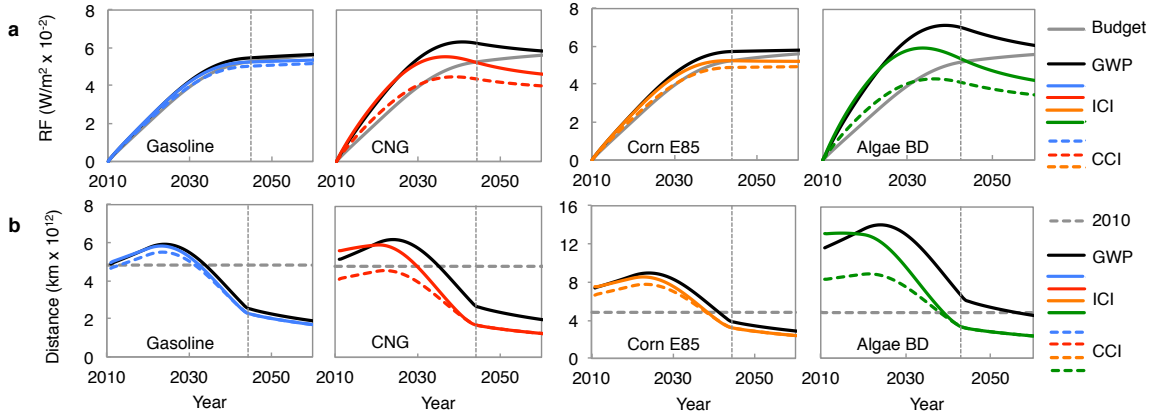


Figure 5: **Simulations of radiative forcing and vehicle kilometers traveled.** **a,b**, Using metrics to examine hypothetical technology pathways results in differing radiative forcing trajectories, as compared to the sector budget (**a**), and differences in vehicle kilometers traveled (**b**). The sector budget is calculated by allocating a percentage of global emissions, based on scenario C (Fig. 3a), to the US passenger vehicle sector, based on the present value ($\sim 3\%$), and simulating the associated radiative forcing (RF) (Supplementary Section 1.2.2). The metric-based radiative forcing is determined by using a metric to calculate emissions and associated energy consumption levels. Average present vehicle efficiencies and driving patterns are assumed (Supplementary Section 4).

These results shed light on technology evaluation debates. One debate focuses on natural gas [19,20]. Using the GWP(100), the US natural gas mix has a slight climate advantage over gasoline, although this conclusion depends on assumptions about the source of the gas and associated emissions, with unconventional natural gas having higher emissions during well construction but conventional gas generally having higher emissions during production [21]. Using the ICI and CCI, CNG used today ranges from slightly advantageous to slightly disadvantageous, while CNG used in 2040 has a significantly higher climate impact and lower climate-goal-compliant consumption than gasoline. These general conclusions also hold under the low- CH_4 emissions scenario (Supplementary Section 5.1).

Another debate focuses on the climate benefits of various biofuels and co-product processing techniques. For the processes studied (Fig. 4b), algae biodiesel appears more favorable than corn ethanol in 2010. However, using the ICI and CCI we observe that by 2040 the climate impact of algae biodiesel surpasses that of corn ethanol, owing to CH_4 leakage in biogas production from algae co-products, which partially offsets the energy requirements of algae production and processing [2]. Although these offsets make biodigestors attractive, with applications in corn ethanol production [25] and other biofuels, resulting CH_4 emissions may make this process less advantageous over time. An alternative catalytic hydrothermal gasification process may achieve much lower CH_4 emissions (Supplementary Fig. 8). These results suggest the importance of developing alternative low- CH_4 co-product processing techniques [26].

The CCI and ICI identify high- CH_4 , low- CO_2 technologies as candidates for near-term but not long-term climate change mitigation. Based on an intended radiative forcing stabilization level, these metrics identify an approximate bridging timeline to transition away

from CH₄-emitting, short-term mitigation technologies. The approximate bridging time is not particularly scenario dependent, owing to the constrained range of emissions scenarios and stabilization years that correspond to commonly cited stabilization targets. The results of applying the metrics to CH₄-emitting algae biodiesel and natural gas for electricity and transportation are particularly notable, highlighting the dependence of their mitigation potential on their time of use. The proposed technology and metric evaluation approach can also be adapted to new information on the timing, location, and form of climate thresholds [23, 27, 28], and the desired trade-off between the risks of exceeding thresholds and the benefits of economic activity [29] (Supplementary Section 2.2). While no equivalency metric is perfect, we find that dynamic metrics that are based on an approximate climate stabilization target and corresponding time horizon can improve technology evaluation for policy-making, private investment, and engineering design.

Methods

In this section we describe the approach to generating the reference scenarios used to calculate the range of CCI and ICI values and to test metric performance. We also describe the technology emissions data used in the research.

Reference Scenarios. The reference scenarios are CO₂ emissions, multi-gas concentration scenarios: all emissions in the simulation are composed entirely of CO₂, but previous emissions of non-CO₂ greenhouse gases are also modeled (Supplementary Section 1.1). These reference scenarios are used to calculate the ICI and CCI and to test all metrics, by allocating a portion of CO₂-equivalent emissions to non-CO₂ gases using the metrics.

Emissions scenarios are constructed [30], where initial emissions e_0 change over time according to

$$e(t') = e_0 \exp \left[\int_0^{t'} g(t'') dt'' \right] \quad (3)$$

where $g(t'')$ is an evolving, exponential growth rate (t'' is a dummy, integration variable). Emissions grow at a constant rate g_0 , based on present growth rates, until the mitigation onset time (t_1), after which $g(t'')$ is reduced by a fixed annual amount until it reaches the final growth rate g_f .

Concentrations $c_i(t)$ of each gas i are a function of pre-industrial concentrations $c_i(t_0)$, historical emissions ($t_0 < t' \leq 0$), and new emissions ($0 < t' \leq t$),

$$c_i(t) = c_i(t_0) + \int_{t_0}^0 f_i(t, t') e_i(t') dt' + \int_0^t f_i(t, t') e_i(t') dt' \quad (4)$$

where $f_i(t, t')$ gives the fraction of a gas emitted at t' remaining at time t [4],

$$f_i(t, t') = a_0 + \sum_{j=1}^n a_j \cdot \exp \left(-\frac{t-t'}{\tau_j} \right) \quad (5)$$

and a_i and τ_i are constants (see Supplementary Table 2 for CO₂, CH₄, and N₂O values). (Equation (5) is also used in the CCI and ICI formulations (equations (1) and (2)), where t

is replaced by t'' for the CCI, which ranges from t' to t_S , and is replaced by t_S for the ICI.) As $n = 1$ and $a_0 = 0$ for non-CO₂ greenhouse gases, no information about the emissions timing is needed to calculate concentrations from historical emissions. For CO₂, where $n = 3$ and $a_0 \neq 0$, the rate of removal must be approximated using historical emissions data (Supplementary Section 1.1.2).

Radiative efficiency (radiative forcing per unit concentration) values are used to determine radiative forcing from concentrations [4].

$$\text{RF}(t) = \text{RF}_A(t) + \sum_i [A_i [c_i(t) - c_i(0)] + \text{RF}_i(c_i(0))] \quad (6)$$

where $\text{RF}_A(t)$ refers to all radiative forcing not due to the presence of modeled gases i , and A_i is the radiative efficiency of gas i (Supplementary Section 1.1.3).

A scenario family is a set of pathways $\text{RF}(t)$ that stabilize at the same radiative forcing threshold but approach it at different rates. To generate stabilization scenarios, emissions are adjusted after the threshold is reached such that radiative forcing equals the threshold value in all subsequent years. Emissions scenarios within a scenario family are defined based on their values of t_1 , which is varied to the greatest extent possible. Earlier values of t_1 result in gradual emissions reductions, while later values of t_1 result in delayed emissions reductions followed by rapid reductions. The scenario family for 3 W/m² stabilization defines the range of stabilization times (t_S) for the analysis presented in the paper.

Metric Testing. The performance of emissions metrics is tested by budgeting a trajectory $e(t')$ for total CO₂-equivalent emissions, and allocating a fraction q of these emissions to a non-CO₂ greenhouse gas. Consider the case of two gases, CO₂ and CH₄. Given a metric $\mu(t')$, the sum of CO₂ emissions $e_K(t')$ and CO₂-equivalent CH₄ emissions $\mu(t')e_M(t')$ must equal $e(t')$. The radiative forcing scenario can be derived from equation (6),

$$\begin{aligned} \text{RF}(t) = & A_K \left[\left(c_K(t_0) + c_{KL}(t) + (1 - q) \int_0^t e(t') f_K(t, t') dt' \right) - c_K(0) \right] + \text{RF}_K(c_K(0)) \\ & + A_M \left[\left(c_M(t_0) + c_{ML}(t) + q \int_0^t e(t') f_M(t, t') \cdot \frac{1}{\mu(t')} dt' \right) - c_M(0) \right] \\ & + \text{RF}_M(c_M(0)) + \text{RF}_A(t), \end{aligned} \quad (7)$$

where K and M subscripts refer to CO₂ and CH₄ respectively, all other contributions to radiative forcing are encompassed in the term $\text{RF}_A(t)$, and concentrations are disaggregated into the three contributions given in equation (4): pre-industrial concentrations, concentrations from historical emissions (abbreviated $c_{iL}(t)$), and concentrations from new emissions. The difference between the actual radiative forcing in the mixed gas case (where $q \neq 0$) and the budgeted, CO₂ emissions case (where $q = 0$) is

$$\Delta\text{RF}(t) = q \int_0^t e(t') \left[A_M f_M(t, t') \cdot \frac{1}{\mu(t')} - A_K f_K(t, t') \right] dt' \quad (8)$$

A similar approach is used to test metric performance for technology evaluation, given a budgeted emissions trajectory $e(t')$ and using historical data to allocate a fraction p of these emissions to the sector of interest (Supplementary Section 1.2.2).

Data. Global emissions, concentration, and radiative forcing data are published by the International Institute for Applied Systems Analysis. Technology life cycle emissions are taken from the Greenhouse Gases, Regulated Emissions, and Energy Use in Transportation (GREET) Version 2012, published by Argonne National Laboratory. In GREET, natural gas CH₄ emissions that arise from liquid unloading in conventional production offset increased leakage during unconventional well completion, with conventional gas having 27% higher emissions than unconventional gas. Present US breakdowns of conventional and unconventional gas are used [22]. In GREET, corn co-products are used as animal feed while algae co-products are used to create biogas in a state-of-the-art facility with CH₄ leakage rates of 2% [2]. Emissions for electricity generation technologies are taken from a recent study. [1]. Low-CH₄ emissions scenarios for natural gas are based on updated EPA estimates of natural gas system leakage and an alternative catalytic hydrothermal gasification scenario for algae biodiesel [2] (Supplementary Section 4).

Acknowledgements

The authors thank James McNerney for his contributions to the development of the metric testing model. We thank Susan Solomon for helpful feedback on this manuscript. This research was partially financially supported by a grant from the New England University Transportation Center at MIT under DOT grant No. DTRT07-G-0001.

Author Contributions:

J.E.T. developed the concept and designed the methods for the study, M.R.E. and J.E.T. performed the analysis, J.E.T. and M.R.E. wrote the paper.

References

- [1] Alvarez, R. A., Pacala, S. W., Winebrake, J. J., Chameides, W. L. & Hamburg, S. P. Greater focus needed on methane leakage from natural gas infrastructure. *Proc. Natl. Acad. Sci. USA* **109**, 6435–6440 (2012).
- [2] Frank, E. D., Han, J., Palou-Rivera, I., Elgowainy, A. & Wang, M. Q. Methane and nitrous oxide emissions affect the life-cycle analysis of algal biofuels. *Environ. Res. Lett.* **7**, 1–10 (2012).
- [3] Stratton, R. W., Wolfe, P. J. & Hileman, J. I. Impact of aviation non-CO₂ combustion effects on the environmental feasibility of alternative jet fuels. *Environ. Sci. Technol.* **45**, 10736–10743 (2011).
- [4] Solomon, S. and Qin, D. and Manning, M. and Chen, Z. and Marquis, M. and Averyt, K. B. and Tignor, M. and Miller, H. L. (ed.). *Climate Change 2007: The Physical Science Basis*. Intergovernmental Panel on Climate Change (Cambridge University Press, 2007).

-
- [5] Daniel, J. S. *et al.* Limitations of single-basket trading: Lessons from the Montreal Protocol for climate policy. *Climatic Change* **111**, 241–248 (2011).
- [6] Smith, S. M. *et al.* Equivalence of greenhouse-gas emissions for peak temperature limits. *Nature Clim. Change* **2**, 8–11 (2012).
- [7] Azar, C. & Johansson, D. J. A. Valuing the non-CO₂ climate impacts of aviation. *Climatic Change* **111**, 559–579 (2011).
- [8] Peters, G. P., Aamaas, B., Lund, M. T., Solli, C. & Fuglestvedt, J. S. Alternative “global warming” metrics in life cycle assessment: A case study with existing transportation data. *Environ. Sci. Technol.* **45**, 8633–8641 (2011).
- [9] Kendall, A. Time-adjusted global warming potentials for LCA and carbon footprints. *Int. J. Life Cycle Ass.* **17**, 1042–1049 (2012).
- [10] Shine, K. P. The global warming potential – the need for an interdisciplinary retrieval. *Climatic Change* **96**, 467–472 (2009).
- [11] Tanaka, K., Johansson, D. J. A., O’Neill, B. C. & Fuglestvedt, J. S. Emissions metrics under a 2°C stabilization target. *Climatic Change* **117**, 933–941 (2013).
- [12] Fuglestvedt, J. S. *et al.* Metrics of climate change: Assessing radiative forcing and emission indices. *Climatic Change* **58**, 267–331 (2003).
- [13] Tol, R. S. J., Berntsen, T. K., O’Neill, B. C., Fuglestvedt, J. S. & Shine, K. P. A unifying framework for metrics for aggregating the climate effect of different emissions. *Environ. Res. Lett.* **7** (2012).
- [14] Fuglestvedt, J. S. *et al.* Transport impacts on atmosphere and climate: Metrics. *Atmos. Environ.* **44**, 4648–4677 (2010).
- [15] Shine, K. P., Fuglestvedt, J. S., Hailemariam, K. & Stuber, N. Alternatives to the global warming potential for comparing climate impacts of emissions of greenhouse gases. *Climatic Change* **68**, 281–302 (2005).
- [16] Shine, K. P., Berntsen, T. K., Fuglestvedt, J. S., Skeie, R. B. & Stuber, N. Comparing the climate effect of emissions of short- and long-lived climate agents. *Phil. Trans. R. Soc. A* **365**, 1903–1914 (2007).
- [17] Manne, A. S. & Richels, R. G. An alternative approach to establishing trade-offs among greenhouse gases. *Nature* **410**, 675–677 (2001).
- [18] Johansson, D. J. A. Economics- and physical-based metrics for comparing greenhouse gases. *Climatic Change* **110**, 123–141 (2012).
- [19] Howarth, R. W., Santoro, R. & Ingraffea, A. Methane and the greenhouse-gas footprint of natural gas from shale formations. *Climatic Change* **106**, 679–690 (2011).

-
- [20] Allen, D. T. *et al.* Measurements of methane emissions at natural gas production sites in the United States. *Proc. Natl. Acad. Sci. USA* **110** (2013).
- [21] Weber, C. L. & Calvin, C. Life cycle carbon footprint of shale gas: Review of evidence and implications. *Environ. Sci. Technol.* **46**, 5688–5695 (2012).
- [22] Burnham, A. *et al.* Life-cycle greenhouse gas emissions of shale gas, natural gas, coal, and petroleum. *Environ. Sci. Technol.* **46**, 619–627 (2011).
- [23] United Nations Framework Convention on Climate Change. *Report of the Conference of the Parties on its fifteenth session, held in Copenhagen from 7 to 19 December 2009*, FCCC/CP/2009/11.
- [24] Ekholm, T., Lindroos, T. J. & Savolainen, I. Robustness of climate metrics under climate policy ambiguity. *Environ. Sci. Policy* **31**, 44–52 (2013).
- [25] Liska, A. J. *et al.* Improvements in life cycle energy efficiency and greenhouse gas emissions of corn-ethanol. *J. Ind. Ecol.* **13**, 58–74 (2009).
- [26] Scott, S. A. *et al.* Biodiesel from algae: Challenges and prospects. *Curr. Opin. Biotechnol.* **21**, 277–286 (2010).
- [27] Alley, R. B. *et al.* Abrupt climate change. *Science* **299**, 2005–2010 (2003).
- [28] Lenton, T. M. Beyond 2°C: Redefining dangerous climate change for physical systems. *WIREs Clim. Change* **2**, 451–461 (2011).
- [29] Lenton, T. M. *et al.* Tipping elements in the Earth’s climate system. *Proc. Natl. Acad. Sci. USA* **105**, 1786–1793 (2008).
- [30] Allen, M. R. *et al.* Warming caused by cumulative carbon emissions towards the trillionth tonne. *Nature* **458**, 1163–1166 (2009).