

## MIT Open Access Articles

*Unraveling the complexity of amyloid polymorphism  
using gold nanoparticles and cryo-EM*

The MIT Faculty has made this article openly available. **Please share**  
how this access benefits you. Your story matters.

**Citation:** Cendrowska, Urszula et al. "Unraveling the complexity of amyloid polymorphism using gold nanoparticles and cryo-EM." Proceedings of the National Academy of Sciences of the United States of America, 117, 12 (March 2020): 6866–6874 © 2020 The Author(s)

**As Published:** 10.1073/pnas.1916176117

**Publisher:** Proceedings of the National Academy of Sciences

**Persistent URL:** <https://hdl.handle.net/1721.1/127226>

**Version:** Final published version: final published article, as it appeared in a journal, conference proceedings, or other formally published context

**Terms of Use:** Article is made available in accordance with the publisher's policy and may be subject to US copyright law. Please refer to the publisher's site for terms of use.





# Unraveling the complexity of amyloid polymorphism using gold nanoparticles and cryo-EM

Urszula Cendrowska<sup>a,1</sup>, Paulo Jacob Silva<sup>a,1</sup>, Nadine Ait-Bouziad<sup>b</sup>, Marie Müller<sup>a</sup>, Zekiye Pelin Guven<sup>a</sup>, Sophie Vieweg<sup>b</sup>, Anass Chiki<sup>b</sup>, Lynn Radamaker<sup>c</sup>, Senthil T. Kumar<sup>b</sup>, Marcus Fändrich<sup>c</sup>, Francesco Tavanti<sup>d</sup>, Maria Cristina Menziani<sup>d</sup>, Alfredo Alexander-Katz<sup>e</sup>, Francesco Stellacci<sup>a,2</sup> , and Hilal A. Lashuel<sup>b,2</sup>

<sup>a</sup>Institute of Materials, Ecole Polytechnique Fédérale de Lausanne, 1015 Lausanne, Switzerland; <sup>b</sup>Laboratory of Molecular and Chemical Biology of Neurodegeneration, Brain Mind Institute, Ecole Polytechnique Fédérale de Lausanne, 1015 Lausanne, Switzerland; <sup>c</sup>Institute of Protein Biochemistry, Ulm University, 89081 Ulm, Germany; <sup>d</sup>Department of Chemical and Geological Sciences, University of Modena and Reggio Emilia, 41125 Modena, Italy; and <sup>e</sup>Department of Materials Science and Engineering, Massachusetts Institute of Technology, Cambridge, MA 02139

Edited by Catherine J. Murphy, University of Illinois at Urbana–Champaign, Urbana, IL, and approved February 11, 2020 (received for review September 20, 2019)

**Increasing evidence suggests that amyloid polymorphism gives rise to different strains of amyloids with distinct toxicities and pathology-spreading properties. Validating this hypothesis is challenging due to a lack of tools and methods that allow for the direct characterization of amyloid polymorphism in hydrated and complex biological samples. Here, we report on the development of 11-mercapto-1-undecanesulfonate-coated gold nanoparticles (NPs) that efficiently label the edges of synthetic, recombinant, and native amyloid fibrils derived from different amyloidogenic proteins. We demonstrate that these NPs represent powerful tools for assessing amyloid morphological polymorphism, using cryogenic transmission electron microscopy (cryo-EM). The NPs allowed for the visualization of morphological features that are not directly observed using standard imaging techniques, including transmission electron microscopy with use of the negative stain or cryo-EM imaging. The use of these NPs to label native paired helical filaments (PHFs) from the postmortem brain of a patient with Alzheimer's disease, as well as amyloid fibrils extracted from the heart tissue of a patient suffering from systemic amyloid light-chain amyloidosis, revealed a high degree of homogeneity across the fibrils derived from human tissue in comparison with fibrils aggregated in vitro. These findings are consistent with, and strongly support, the emerging view that the physiologic milieu is a key determinant of amyloid fibril strains. Together, these advances should not only facilitate the profiling and characterization of amyloids for structural studies by cryo-EM, but also pave the way to elucidate the structural basis of amyloid strains and toxicity, and possibly the correlation between the pathological and clinical heterogeneity of amyloid diseases.**

amyloids | nanoparticles | cryo-EM | polymorphism | Alzheimer's disease

**A**myloids are insoluble  $\beta$ -sheet-rich fibrillar protein aggregates found in pathological deposits and inclusions that characterize several neurodegenerative and systemic diseases (1). These diseases span from degenerative diseases of the central nervous system, such as Alzheimer's disease (AD) and Parkinson's disease (PD), to systemic disorders, such as type 2 diabetes and systemic amyloidosis (1–5). Although the mechanisms of amyloid formation in vivo and the nature of the toxic species remain subjects of intense investigation and debate, there is converging evidence that the fibrillization process plays a central role in neurodegeneration and pathology spreading in neurodegenerative diseases. Therefore, the prevention or inhibition of protein misfolding, aggregation, and pathology spreading remain the most actively pursued goals in developing therapeutic strategies against amyloid diseases.

Increasing evidence from in vitro and animal models, as well as structural studies on both ex vivo and synthetic aggregates, has shown that amyloid-forming proteins can self-assemble into fibrils of distinct morphologies and toxic properties. Several studies

have shown that amyloidogenic proteins such as amyloid- $\beta$  (A $\beta$ ),  $\alpha$ -synuclein, and tau protein self-assemble in vitro into fibrils of different morphologies (e.g., ribbon, helical, and straight fibrils), depending on their growth conditions (6–10). Even in the same sample, different types of fibril morphologies have been shown to form and coexist, suggesting that they are either in an equilibrium or are derived from morphologically distinct intermediates on the pathway to aggregation (11, 12). The polymorphism of cross- $\beta$  fibrils has also been observed in ex vivo fibrils; for instance, isolated tau fibrils from the brain of patients with AD (13) or amyloid fibrils from patients and animals with systemic amyloidosis of amyloid A (AA), transthyretin (ATTR), and light chain (AL) (14).

Recent studies have demonstrated that introducing recombinant preformed fibrils or amyloid aggregates derived from diseased post-mortem brain tissues into neurons or directly into rodent brain is sufficient to induce disease-like pathology formation and spreading. In these seeding-based models, distinct fibrillar polymorphs lead to different patterns of pathology spreading and/or toxicity (15–18). Tycko and coworkers have developed a method that enables the amplification of native amyloids by seeding monomeric A $\beta$  with

## Significance

**The ability of proteins to self-assemble into different types of fibrils with distinct morphologies has been linked to the pathological and clinical heterogeneity of amyloid diseases such as Alzheimer's disease and Parkinson's disease. Here, we describe nanoparticles (NPs) that efficiently label amyloid fibrils produced in vitro or isolated from postmortem tissues, under hydrating conditions and in such a way as to unmask their polymorphism and morphological features. Using these NPs, we show that pathological aggregates exhibit exceptional morphological homogeneity compared with amyloid fibrils produced in vitro, consistent with the emerging view that the physiologic milieu is a key determinant of amyloid fibril strains. These advances pave the way for elucidating the structural basis of amyloid strains and toxicity.**

Author contributions: F.S. and H.A.L. designed research; U.C., P.J.S., N.A.-B., M.M., Z.P.G., S.V., A.C., L.R., S.T.K., M.F., F.T., M.C.M., and A.A.-K. performed research; U.C., P.J.S., and Z.P.G. contributed new reagents/analytic tools; U.C., P.J.S., and F.T. analyzed data; and U.C., P.J.S., N.A.-B., F.S., and H.A.L. wrote the paper.

The authors declare no competing interest.

This article is a PNAS Direct Submission.

This open access article is distributed under [Creative Commons Attribution-NonCommercial-NoDerivatives License 4.0 \(CC BY-NC-ND\)](https://creativecommons.org/licenses/by-nc-nd/4.0/).

<sup>1</sup>U.C. and P.J.S. contributed equally to this work.

<sup>2</sup>To whom correspondence may be addressed. Email: francesco.stellacci@epfl.ch or hilal.lashuel@epfl.ch.

This article contains supporting information online at <https://www.pnas.org/lookup/suppl/doi:10.1073/pnas.1916176117/-DCSupplemental>.

First published March 11, 2020.

different fibril types isolated from different patients with AD or different brain regions (19, 20). Their findings suggest a correlation among the amyloid fibril molecular structure, amyloid toxicity, and symptomatology. Peng and colleagues (16) demonstrated that isolated cytoplasmic brain aggregates from PD (Lewy bodies) and multiple system atrophy (glial cytoplasmic inclusions [GCIs]) exhibit distinct conformations and drastically different seeding capacities of  $\alpha$ -synuclein. GCI  $\alpha$ -synuclein forms structures that are more compact and approximately a thousandfold more potent than those of Lewy body  $\alpha$ -synuclein in terms of seeding capacity. Similar observations were made with tau (21). These findings and the availability of cellular and animal models of amyloid propagation provide a unique opportunity to investigate the relationship among amyloid molecular and morphological polymorphism, neurodegeneration, and pathology spreading in neurodegenerative diseases. Nonetheless, it remains challenging to elucidate the structural basis and role of fibril polymorphism in human-derived material due to the minute amount of these aggregates and the complexity of the samples.

Amyloid polymorphism can occur at different levels. Tycko and coworkers have established that the same protein can have different molecular arrangements when forming an amyloid fibril, and in this paper, we refer to this as molecular polymorphism (22). Mezzenga and coworkers have shown that the shape, including the symmetry and thickness, of a fibril varies depending on the number of protofilaments that compose the fibrils (23). We refer to this as morphological polymorphism. These two types of polymorphism are not mutually exclusive and could coexist.

Molecular polymorphism has been investigated using solid-state NMR (ssNMR) spectroscopy, microcrystallography, and X-ray diffraction, while transmission electron microscopy (TEM), scanning probe microscopy, and atomic force microscopy have been used to investigate morphological polymorphism (24, 25). These techniques have similar limitations: they are time consuming, they require large amounts of protein (e.g., ssNMR), they can be applied only to shorter amyloid-forming peptides (e.g., microcrystallography), they do not allow imaging of amyloids in complex systems under native and hydrated conditions (e.g., TEM), or they require the presence of a substrate that may strongly influence the aggregation pathway of the growing fibrils (e.g., atomic force microscopy) (26). For example, direct investigation of the molecular basis of amyloid polymorphism of A $\beta$  in AD brain tissue using ssNMR spectroscopy was only possible by seeding brain-derived aggregates (seeds) to an excess of isotopically labeled monomeric proteins, requiring hundreds of milligrams of fibrils (27–29). In TEM, samples are dried on the grid and stained with an electron-dense staining agent before imaging. Although this technique allows for rapid characterization of the structural morphology of the fibrils (14), it may introduce several artifacts, such as flattening of the structure or incomplete stain embedding (30). Cryo-EM can address these shortcomings because it does not require drying, staining, or surface deposition and allows fibrils to be imaged in their hydrated state. This method is increasingly used to investigate the structure of amyloid fibrils prepared *in vitro* or derived from different tissues (11, 13, 31). However, the measurements are based on the weak contrast between fibrils and glassy ice and require a large number of images and advanced data analysis techniques to extract morphological information.

Here, we describe the synthesis and application of gold nanoparticles (NPs) that efficiently label amyloid fibrils in a specific manner and in such a way so as to unmask their polymorphism and morphological features. Our NPs combined with cryo-EM enable rapid screening and detailed characterization of amyloid morphological polymorphism under hydrated conditions. Importantly, the resulting information cannot be directly observed using standard imaging techniques. One of the unique features of these NPs is that they efficiently label amyloid fibrils produced from a wide range of disease-associated recombinant proteins or synthetic peptides

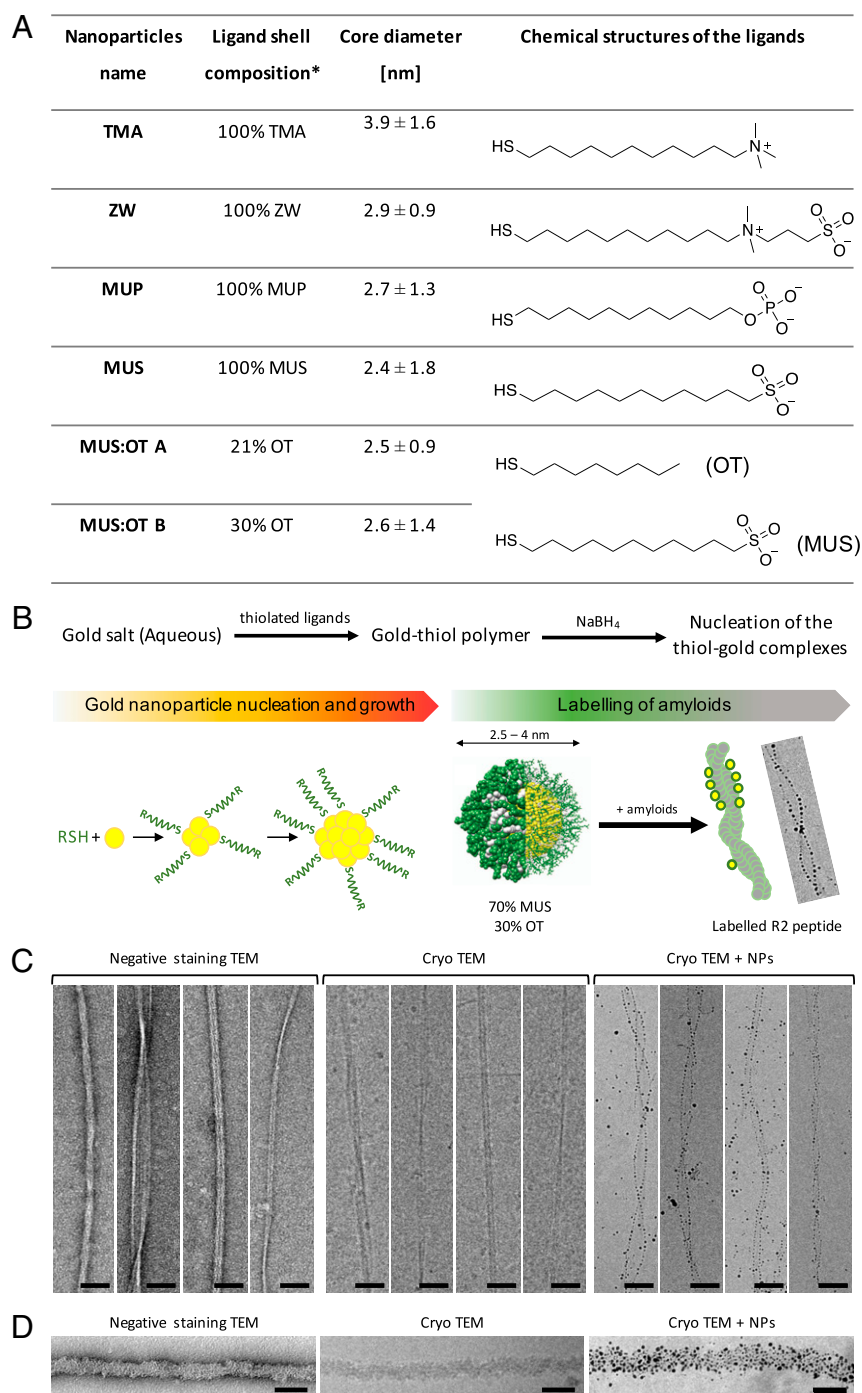
*in vitro* (e.g., amyloid beta peptides,  $\alpha$ -synuclein, TDP-43, Tau, Ig  $\lambda$  light chain, and exon1 of the Huntingtin protein), despite the diversity of their amino acid sequence, secondary structure contents, and fibrillar morphology. Furthermore, our NPs efficiently label *ex vivo* disease-associated fibrils isolated from pathological aggregates derived from the brain and heart of patients suffering from AD and AL amyloidosis, respectively. Our results also show that brain- and heart-derived amyloid fibrils isolated from pathological aggregates exhibit morphological homogeneity, in terms of their helical periodicity, in comparison with amyloid fibrils produced from recombinant proteins or peptide *in vitro*. Further studies are required to validate these findings by comparing the morphological properties of *ex vivo* fibrils derived from different amyloid proteins with fibrils made from these proteins *in vitro*. However, our findings are consistent with and strongly support the emerging view that the physiologic milieu is a key determinant of amyloid fibril strains.

## Results

**MUS:OT NPs Successfully Label Different Polymorphs of Amyloid Fibrils.** Noble metal NPs have been previously used to study amyloid fibrils. Since 1971, gold NPs conjugated with a specific antibody have been successfully used to label amyloids (32). This technique, called immunogold labeling, allows for the localization of amyloids in tissue sections and the characterization of the sequence and structural properties of fibrils in solution (33, 34). However, with this technique, NPs do not anchor directly on the fibrils, but are located as far as 30 nm away due to the presence of the bulky antibody and linker. Therefore, the NPs used under these conditions cannot provide information about the structural or morphological features of amyloid fibrils, which renders this technique unsuitable for the characterization of fibril polymorphism (35). There are also examples of amyloids being labeled using a nanomaterial without spacers, such as maghemite NPs (36, 37), gold nanorods (38), or gold NPs (39, 40). Due to their bulky size and the nonspecific nature of their interactions with amyloid fibrils, these nanomaterials are also unsuitable for unraveling morphological features and heterogeneity of fibrils.

To address these limitations, we sought to develop tools that leverage the advantages offered by NPs (e.g., small size with significant electron density) to enable determining amyloid morphological polymorphism under hydrated conditions, using cryo-EM. Toward this goal, we first synthesized NPs with various charges and ligands (Fig. 1A): positively charged [N,N,N-trimethyl(11-mercaptoundecyl)ammonium chloride; TMA], negatively charged (11-mercapto-1-undecanesulfonate [MUS]; 11-mercaptoundecylphosphoric acid [MUP]), mixed ligand negatively charged (mixtures of MUS and 1-octanethiol referred to as MUS:OT A and MUS:OT B), and zwitterionic NPs (3-[(11-mercapto-undecyl)-N,N-dimethylamino]propane-1-sulfonate; ZW). Positively charged and zwitterionic NPs were synthesized via modification of the method developed by Zheng et al. (41), while anionic NPs were synthesized via a one-phase method, as described previously (41) and in the *SI Appendix*. The ligand shell composition was determined by <sup>1</sup>H-NMR spectroscopy after etching the gold core with iodine (42), while the size distribution of the Au core was determined using TEM (Fig. 1A and B and *SI Appendix*, Fig. S1).

To achieve efficient labeling and visualization, we used gold NPs with a core diameter of  $\sim$ 3 nm, as smaller particles are difficult to visualize in conventional cryo-EM and larger particles may result in a lower morphological accuracy and spatial localization of the fibril. To determine ligands with the best labeling efficiency, we first examined the interaction between A $\beta$ <sub>40</sub> fibrils and the different types of gold NPs by cocubating fibrils with different NPs and then imaging them using cryo-EM. The A $\beta$ <sub>40</sub> peptide is one of the constituents of amyloid plaques and one of the key defining pathological hallmarks of AD, together with the protein tau. Previous studies have shown that A $\beta$ <sub>40</sub> self-assembles and forms fibrils of different morphologies under



**Fig. 1.** (A) Table presenting the NPs and their characteristics: ligand shell composition, core size and chemical structure of the protective ligands. (B) Simplified scheme of NP synthesis, with the cartoon depicting the nucleation and the amyloid-labeling process. NPs are synthesized from gold salt on addition of the chosen ligand or ligands, which triggers the creation of a gold-thiolate complex. A reducing agent is added dropwise to the gold-thiol mixture at the end of the process and causes the nucleation of the NPs, which subsequently grow to their final size, which spans from 1 to 5 nm (mathematical simulation of MUS:OT B NPs, where the gold core is depicted in yellow, the MUS ligand in green, and the OT ligand in white). Amyloid fibrils become decorated through the adsorption of NPs on their surface. (C) Comparison of R2 fibrils imaged by negative staining, cryo-EM, and cryo-EM images of the fibrils decorated with MUS:OT B NPs. The different morphologies of the fibrils, including straight and twisted fibrils, are clearly highlighted by the NPs. (D) Comparison of TDP-43 fibrils imaged by negative staining, cryo-EM, and cryo-EM images of the fibrils decorated with MUS:OT A NPs. Unlike other amyloids, TDP-43 fibrils do not reveal helical morphology, yet still become evenly decorated. (Scale bars, 50 nm.) \*Ligand ratio calculated from  $^1\text{H}$  NMR analysis after decomposition of the core.

different conditions (7, 11), which makes it a good model system to study how our NPs can be used to characterize fibril polymorphs. Among all of the synthesized NPs, the mixture of OT and MUS ligands on the gold surface was the most efficient in

labeling  $\text{A}\beta_{40}$  fibrils, as the other NPs tested either did not attach efficiently to the fibril surface or formed large fibril–NP aggregates (*SI Appendix, Fig. S2*). We observed that both types of MUS:OT NPs showed similar amyloid labeling efficiency despite

the small difference in the hydrophobic ligand ratio (Fig. 2). Higher ratios of OT in the ligand shell often resulted in reduced NP solubility under the buffer conditions used in this study. These observations, combined with molecular dynamics simulations studies (*SI Appendix, Fig. S9*), led us to hypothesize that labeling efficiency depends on the hydrophobic contacts between the NPs and the amyloid fibrils.

We also examined the influence of our nanomaterial on the secondary structure and fibril morphology of A $\beta$ <sub>40</sub> by coincubating A $\beta$ <sub>40</sub> with NPs during the aggregation process and on the mature fibrils obtained at the end of the aggregation reaction. As shown in *SI Appendix, Fig. S3*, the presence of NPs did not modify the secondary structure of the amyloid fibrils, and that the possible influence on the fibril structure on decoration with NPs is minimal.

To illustrate the advantage of using our NPs, we imaged fibrils derived from the second repeat region of tau via negative-staining TEM, cryo-EM, and cryo-EM after coincubation with NPs and fibrils. As shown in Fig. 1C, NPs facilitated the visualization of the amyloid edges in cryo-EM while retaining the main advantage of cryo-EM relative to that of negative stain TEM (i.e., eliminating the need for drying).

To determine whether our NPs could decorate fibrils that did not present clear twisted morphologies, we incubated NPs with transactive response DNA-binding protein 43 (TDP-43) fibrils, which is implicated in several neurodegenerative conditions including amyotrophic lateral sclerosis, subsets of frontotemporal dementia, and AD (43). We were able to obtain uniform decoration with MUS:OT A NPs across the entirety of the fibrils (Fig. 1D), which significantly facilitated the detection of the fibrils in the ice. These findings demonstrate that our NPs enable rapid characterization of fibril morphological polymorphism in *in vitro* samples of different amyloids and reveal structural features that are not readily visible by standard cryo-EM in the absence of extensive image analysis.

**MUS:OT NPs Enable Rapid Profiling and Characterization of the Polymorphism of the AD-Associated A $\beta$ <sub>40</sub> and Tau-Derived R2 Peptides.** MUS:OT NPs were used to perform an in-depth analysis of the polymorphism of AD-associated A $\beta$ <sub>40</sub> and an amyloidogenic tau-derived peptide. Cryo-EM images of A $\beta$ <sub>40</sub> after 24 h of incubation with gold MUS:OT NPs under shaking conditions revealed homogeneously decorated fibrils (Fig. 2A–E). The NPs were evenly distributed lining the edges of the fibrils, which increased their contrast under cryo-EM, facilitating their detection on the grid. In this article, we refer to the edge as the contour of the amyloid fibril. The fibril edges are easily discerned from the background, allowing for immediate determination of the type of morphological polymorph. Preferred labeling on the narrow sides of the fibrils with twisted ribbon morphology could be possibly explained by the mechanism of fibrillation itself. It was previously proposed that this morphology of amyloid fibrils is a result of the lateral association of the protofilaments (44). This is driven by a combination of hydrophobic and electrostatic interactions, which may also determine the specific labeling of the edges of the fibrils (*SI Appendix, Fig. S4*). We observed that A $\beta$ <sub>40</sub> fibrils existed predominantly as two classes of polymorphs: two- and threefold helical symmetries around the longitudinal axis (Fig. 2A–C). The NP labeling facilitated the measurement of the crossover length distribution of the two-fold twisted fibril population (Fig. 2D), facilitating image analysis and quantification of the fibrils' morphological parameters. Cryo-EM technique projects 3D objects as a 2D image. Two-fold symmetric images can be generated by the projection of twisted ribbons. More complex geometries may have the appearance of a three-fold symmetry that stems from a twisted ribbon, a triangular cross-section, or helical ribbons (23). In this article, we refer to

the apparent image symmetry, not to the effective object symmetry (*SI Appendix, Fig. S5*).

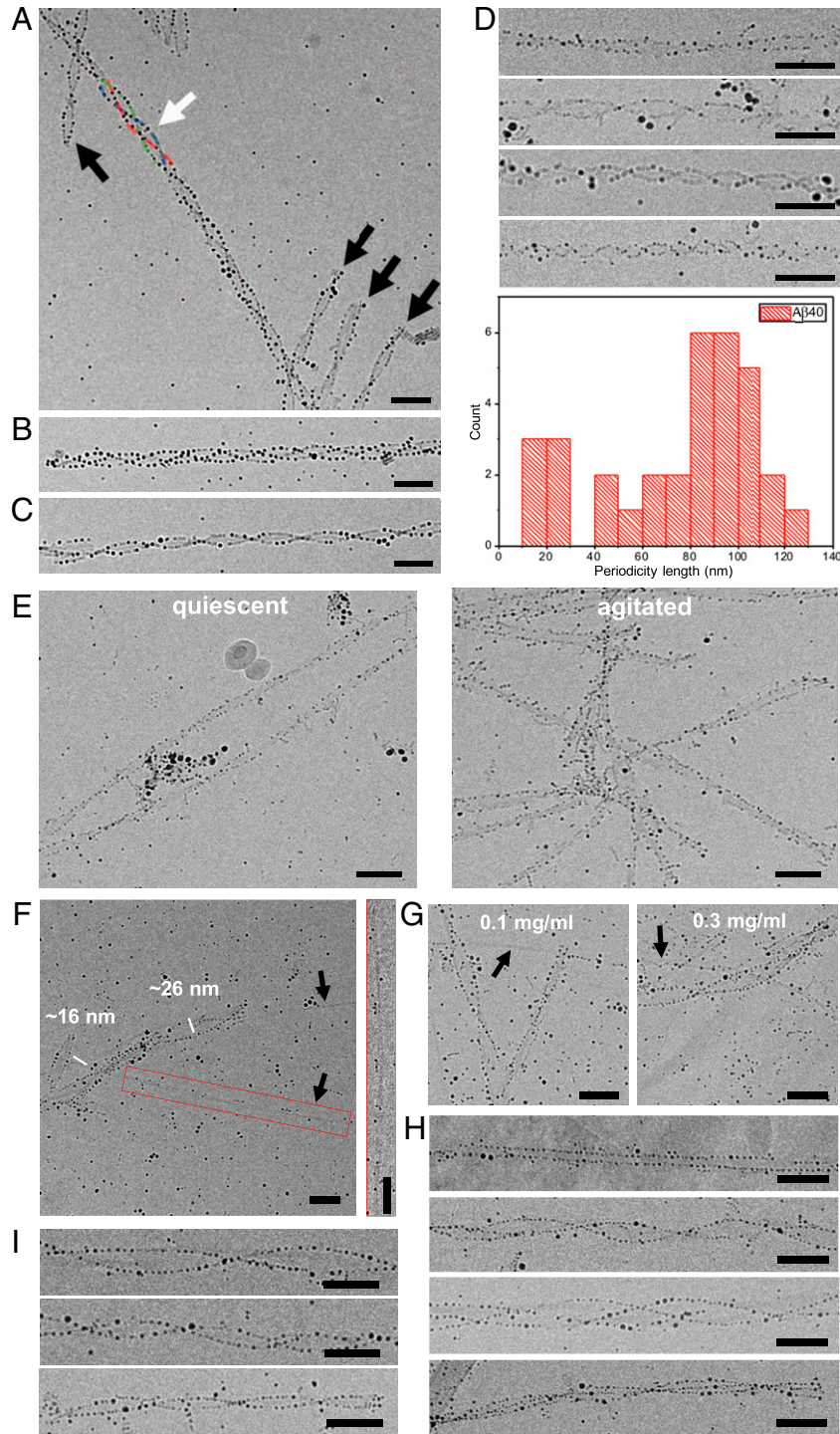
To investigate the effect of the aggregation conditions on the polymorphic population, we prepared A $\beta$ <sub>40</sub> fibrils using two different procedures: with and without agitation. The high affinity of the NPs to the fibril edges allows for rapid determination of the differences in the structural polymorph distribution between these two conditions. We observed that fibrils formed under quiescent conditions were usually longer and presented a twisted helical symmetry, while those prepared under agitation were predominantly shorter and resembled straight ribbons devoid of any visible twist (Fig. 2E).

Tau is a natively unfolded protein, but under pathological conditions, it undergoes conformational changes that render the protein more prone to aggregation into paired helical filaments (PHFs). PHFs are the main component of the intracellular neurofibrillary tangles in the brains of patients with AD (45). Tau's ability to adopt  $\beta$ -sheet conformations, necessary for amyloid aggregation, relies mainly on small peptide motifs located in the second, third, and fourth microtubule binding domains of tau (46). To determine whether the MUS:OT NPs could bind and label fibrils derived from other amyloid-forming peptides, we incubated them with fibril preparations of the microtubule-binding domain-derived peptide (repeat unit R2), which exhibits a high propensity to self-assemble into a wide variety of fibril morphological polymorphs (47, 48). MUS:OT A NPs adsorbed selectively to the different tau peptide fibril polymorphic types: wide fibrils with a clear twist were predominantly densely decorated, while thin fibrils remained not decorated by the NPs (Fig. 2F). This was observed even after prolonged periods of coincubation (*SI Appendix, Fig. S6*) or with higher ratios of NPs to fibrils (Fig. 2G), with free and unbound NPs visible in the glassy ice, indicating that the different labeling patterns correlate with the different fibril surface properties rather than incubation conditions. Furthermore, within the labeled amyloid fraction, many polymorphs could be differentiated: straight and clear three-fold symmetric structures (Fig. 2H) and a whole range of two-fold twisted fibrils with different periodicity (Fig. 2I). These diverse fibril polymorphs could not be detected by negative staining or easily visualized by standard cryo-EM. As in the case of A $\beta$ <sub>40</sub>, our NP-based procedure provided a rapid tool to establish the morphological diversity of the tau peptide fibrils.

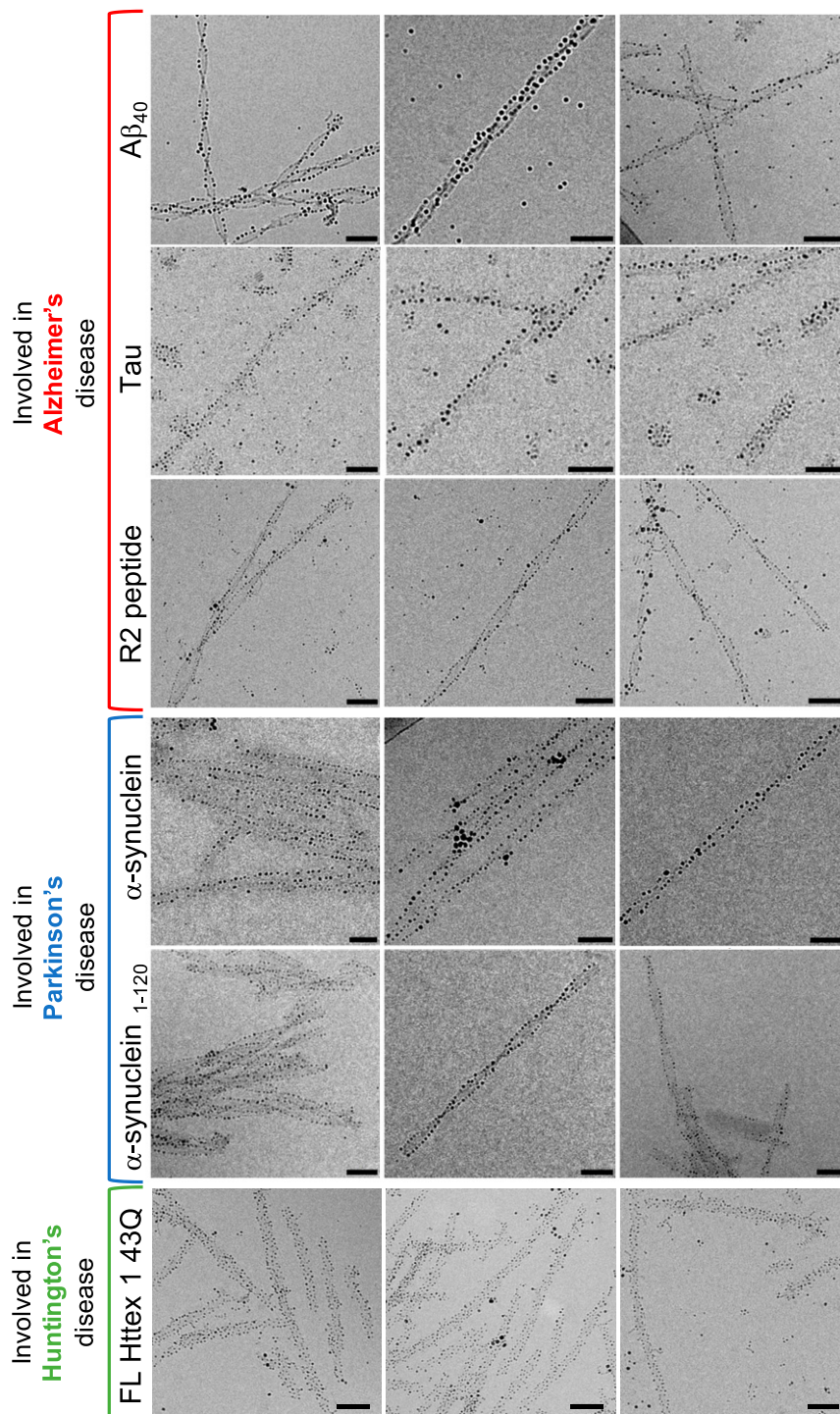
To demonstrate that the NPs represent versatile cryo-EM markers for other amyloid-forming proteins, we incubated them with fibrils derived from different amyloidogenic proteins with different amino acid sequences that also form polymorphic fibrillar aggregates. To this end, we prepared fibrils from several proteins that have been linked to the pathogenesis of AD (tau) (13), PD ( $\alpha$ -synuclein and C terminally truncated  $\alpha$ -synuclein [1 to 120]) (18), and Huntington's disease (mutant exon 1 of the huntingtin protein (residues 2 to 90), with 43 glutamines in the polyQ region; Httex1 43Q) (49). Fig. 3 demonstrates that the NPs successfully labeled the fibrils produced from all these proteins, despite their sequence diversity and heterogeneous morphologies. Interestingly, compared with the A $\beta$ <sub>40</sub> and R2 fibrils, onto which the NPs bind to the fibril edges, both the tau and Httex1 43Q fibrils were decorated on the whole fibril surface.

**MUS:OT NPs Successfully Label Minute Amounts of Ex Vivo Samples and Allow Determination of Polymorph Distribution in Human-Derived Samples.** Finally, we sought to determine whether our NPs could be effective as a contrast agent in cryo-EM for human-derived samples. To achieve this goal, we used native tau PHFs isolated from the brain affected by AD and amyloid fibrils of an Ig  $\lambda$  light chain that were purified from the heart of a patient suffering from AL amyloidosis. We incubated both *ex vivo* fibril preparations with MUS:OT A NPs.

The cryo-EM images of AL amyloids showed rather uniform and densely decorated fibrils with the crossovers clearly visible



**Fig. 2.** MUS:OT NPs decorating  $A\beta_{40}$  and R2 fibrils. (A) Mixture of three-fold and two-fold  $A\beta_{40}$  fibrils within a sample detected with the use of MUS:OT NPs. Black arrows point to two-fold fibrils, and the white arrow points to a three-fold symmetric fibril. (B and C) show higher magnification images of three- and two-fold symmetric fibrils, respectively. (D) Quantification of the two-fold fibril periodicity distribution within a sample. (Upper) Micrographs of  $A\beta_{40}$  amyloid fibrils with various periodicity. (Lower) Periodicity distribution of two-fold fibrils, highlighting the diversity of  $A\beta_{40}$  fibril morphological polymorphs in a single sample. (E) Comparison between fibrils grown under quiescent conditions decorated by gold NPs unraveling their twist and short, ribbon-like shaped fibrils that were agitated during the aggregation process. (F) Decorated twisted fibrils coexisting with undecorated thin R2 fibrils. Black arrows point at the undecorated fibrils, which usually display diameters smaller than 10 nm. An example of this fibril is highlighted by a red box. The red panel to the right of the image shows a digital zoom of the same undecorated fibril marked on the image. The contrast of these images was enhanced to allow for easier visualization of the fibrils. (G) Undecorated thin fibrils visible in the sample with increased concentration of NPs. Black arrows point to the undecorated amyloid fibrils, which show a specific morphology. (H) Different morphologies of the R2 fibrils are easily discriminated owing to the labeling with NPs. (I) Twisted R2 fibrils of different periodicities. Micrographs shown on A–C contain amyloids decorated with the use of MUS:OT B NPs, while the rest of the panels show fibrils covered with MUS:OT A NPs. (Scale bars, 50 nm.)



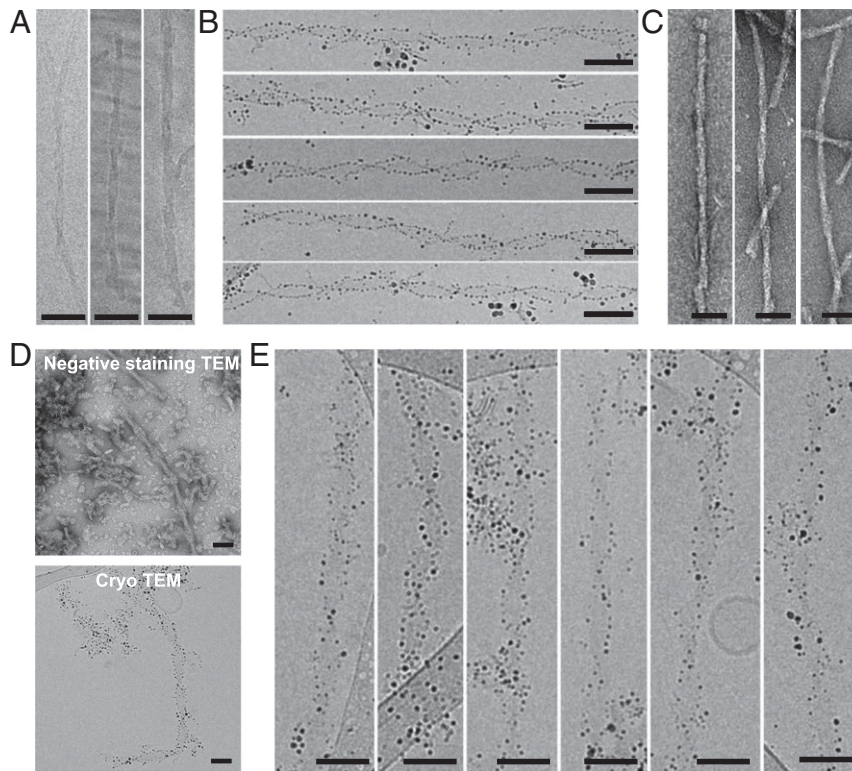
**Fig. 3.** Examples of different amyloid fibrils decorated with MUS:OT NPs. Electron micrographs of fibrils prepared from proteins involved in AD ( $A\beta_{40}$ , full-length tau and the tau-derived peptide R2), PD (full-length and C-terminally truncated  $\alpha$ -synuclein), and Huntington's disease (mutant exon 1 of the Huntingtin protein, Httex1-43Q). (Scale bars, 50 nm.)

owing to the presence of the NPs, a feature that is not as evident in the normal cryo-EM and negative stain TEM images (Fig. 4 *A–C*).

Similar data were obtained from enriched PHF samples from an AD postmortem brain. It is important to note that this sample still contained other nonamyloidogenic elements such as cell debris, proteins, and other biological contaminants. The cryo-EM images indeed revealed the presence of many biological structures that

were entangled with MUS:OT A gold NPs (*SI Appendix, Fig. S7*). However, the PHFs were readily distinguishable from contaminants, which was due to the contrast provided by the NPs highlighting the characteristic fibrillar shape of a rather uniform double-twisted morphology (Fig. 4 *D* and *E*).

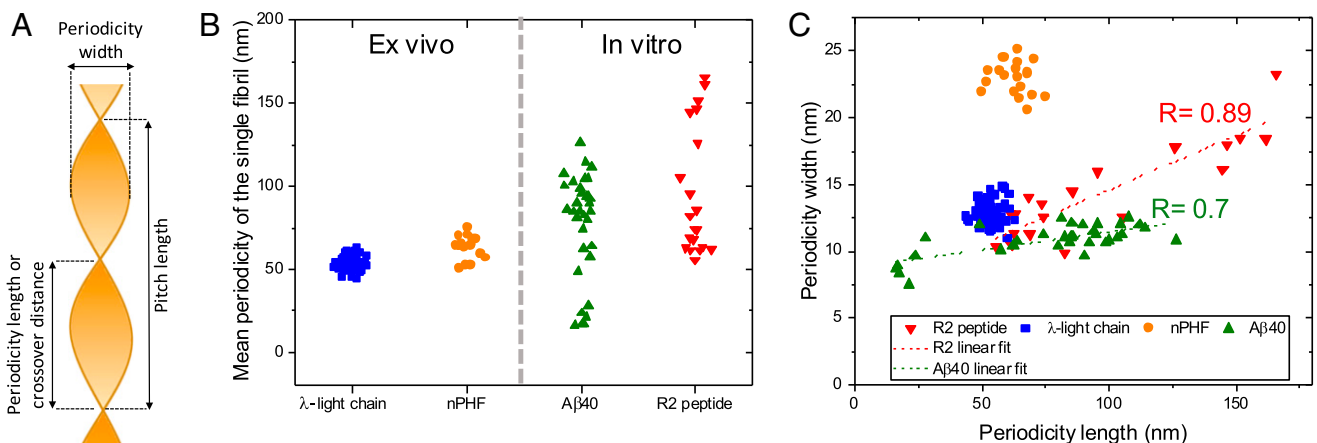
For both native fibril samples, the NPs demonstrated specificity toward the edges of the amyloid fibrils and highlighted their delimitation, which allowed the observation of the morphological



**Fig. 4.** NP decoration of ex vivo PHFs and AL amyloid fibrils. (A) Cryo-EM image of AL amyloid fibrils without NPs. (B) A compilation of cryo-EM images of AL amyloid fibrils labeled with MUS:OT A NPs. (C) AL fibrils imaged by negative stain TEM in the absence of NPs. (D) Comparison between negative stain TEM images of PHFs and cryo-EM image of PHFs labeled with MUS:OT A NPs. (E) A compilation of ex vivo PHF fibrils labeled with MUS:OT A NPs. (Scale bars, 50 nm.)

details and fibrillar characteristics. Furthermore, decoration with MUS:OT NPs allowed us to quantify specific features of the fibril polymorphs under hydrated conditions, such as the average periodicity width and length. We found that both ex vivo samples show a narrow periodicity range (Fig. 5B) when compared with the periodicity of the synthetic A $\beta$ <sub>40</sub> fibrils and with that of many other published fibrils prepared in vitro (44, 50, 51). The mean periodicity of the AL amyloids was equal to  $\sim$ 53.2 nm, with a SD of 3.8 nm ( $n = 73$ ). The PHF fibrils derived from the brain of another

patient had an average periodicity equal to 62.8 nm, with a SD of 6.6 nm ( $n = 18$ ). This result contrasts with the values obtained for the in vitro obtained samples, which showed much higher SDs (31.5 nm for A $\beta$ <sub>40</sub> fibrils [ $n = 33$ ] and 37.6 nm for tau peptide fibrils [ $n = 20$ ], with an average periodicity length of 76 nm and 95.8 nm, respectively). This contrast shows that the populations of fibrils present in each measured sample differ in morphology depending on the origin of the sample. This demonstrates that human-derived amyloids tend to be much more uniform than



**Fig. 5.** (A) A schematic representation of the measured fibril characteristics: periodicity width, length or the crossover distance, and pitch length. (B) Distribution of the average crossover distance per fibril for the two types of ex vivo samples compared with the amyloids aggregated in vitro, highlighting the narrow distribution of crossover distance in the two ex vivo samples. (C) Amyloid width plotted against crossover distance distribution. One dot represents the mean values obtained for the periodicity length and width of one fibril. The same figure with error bars can be found in the *SI Appendix*, Fig. S8.



fibrils generated in vitro from recombinant or synthetic proteins and peptides (Fig. 2). Further analysis of the periodicity showed that the length and width of the periodicity are positively correlated in the case of the fibrils produced in vitro. Amyloids derived from human tissue showed significant homogeneity of the periodicity width and no correlation between periodicity and fibril width (Fig. 5C).

Compared with existing methods, the coupling of MUS:OT NPs with cryo-EM allows for a straightforward examination of the entire population of fibrillar polymorphs in complex biological mixtures, requiring only a few microliters of sample. Moreover, the sample does not need to be extensively processed beforehand, as the fibrils bound to NPs are easily distinguished from other tissue components. Therefore, this method permits image analysis on minute amounts of sample of relatively low purity.

## Discussion

Increasing evidence suggests that amyloid fibril polymorphism underlines the emergence of various amyloid strains, which may explain the pathological diversity and possibly the clinical heterogeneity of amyloid diseases. For example,  $\alpha$ -synuclein aggregates isolated from different types of synucleinopathies (e.g., PD and multiple system atrophy) exhibited drastically different structure (52, 53) and seeding capacity, and induced different patterns of pathology spreading in in vitro neuronal cell models and animal models of synucleinopathies (16). Similar findings have been made for A $\beta$  aggregates from AD brains and other amyloidogenic proteins (20, 54–56). While these differences have been attributed to differences in the structural properties of the fibrils present in these samples, direct visualization and characterization of some of the tissue-derived aggregates has not been possible. This limitation is mainly due to the complexity of the brain homogenates and the minute content of fibrils and protein aggregates in these samples, which precludes the introduction of additional purification steps to allow their isolation and characterization. Although different approaches have been used to indirectly characterize such aggregates by taking advantage of their seeding capacity to try to amplify their structure using recombinant proteins as substrates, direct comparison of the amplified aggregates to the original seed has not been possible. Therefore, elucidation of the structural basis underlying the different properties associated with different fibril strains requires the development of new tools and experimental approaches that address these limitations and allow for direct visualization and structural characterization of fibrils in biological samples.

Recent advances in cryo-EM have enabled previously inaccessible insight into the structural properties of amyloid fibrils derived from recombinant and synthetic proteins of different sizes, and even fibrils isolated from postmortem human tissues (11, 13, 52, 57). One key step in the process of solving the structures of amyloids by cryo-EM involves the screening of sample conditions to identify conditions that reduce the structural and morphological diversity of the fibrils and/or favor the formation of specific populations of fibril structures. In the case of native amyloid samples, only the most abundant polymorphs are usually represented in the final structures. Therefore, the polymorphic diversity within a sample is not usually accounted for or reflected in the final structure. To address this limitation and allow for comprehensive and rapid analysis of fibril polymorphism, we propose the use of gold NPs as a potent tool to label and characterize fibril morphologies and polymorphism under hydrated conditions. Gold NPs have an electron-dense core that affords strong contrast under TEM and does not require any additional staining and/or processing to enhance the contrast. As such, we have developed an NP-based cryo-EM technique to simplify the analysis of fibril polymorphism derived from samples of different origin. The MUS:OT NPs exhibit a high propensity to attach to the edges of fibrils composed of various amyloid proteins, enabling rapid characterization of their polymorphic distribution in

minute samples of increasing complexity. The improved contrast provided by the NP decoration also allows for quantitative image analysis, including the measurement of periodicity characteristics such as width and length. All of this can be done without extensive data collection and treatment. In a typical experiment, 3  $\mu$ L of fibril solution were sufficient to prepare a sample; hence, this technique allows for the labeling and characterization of fibrils in samples with low amounts of fibrils (e.g., purified fibrils isolated from postmortem tissues or biological fluids, such as plasma and cerebrospinal fluid).

The MUS:OT NPs appear to bind with different affinities to different fibril polymorphs. For example, in the case of the fibrils made of tau peptide fragments, we observed a different labeling pattern between twisted fibrils that were highly decorated and what appeared to be thin fibrils that were not decorated at all. These differences in labeling morphologically polymorphic species may indicate differences in surface properties and may be used in the future to separate specific polymorphs from a heterogeneous population using an NP-based purification strategy. Another mode of labeling was observed on the full-length recombinant tau, TDP 43, and Httex1 43Q fibrils, which were densely decorated along the whole surface. This finding may be explained by the greater variability of exposed surfaces, which results in more adsorption sites for the NPs.

The analysis of recombinant and synthetic samples showed a wide range of structural polymorphs with variability in periodicity length and labeling efficacy. In Fig. 5C, we show an analysis that correlates the periodicity length and width for synthetic A $\beta$ <sub>40</sub> and recombinant tau peptides. The results are in agreement with the theory proposed by De Los Rios (58), which hypothesized that the periodicity of the fibril depends on the number of protofilaments constituting the fibril. The correlation shown in Fig. 5C suggests a linear dependence of these two parameters for the amyloids aggregated in vitro. In contrast, the ex vivo samples analyzed here were composed of a rather homogenous fibril population, suggesting uniform protofibril number per mature amyloid. We observed a narrow distribution of the periodicity width and length in the AL and PHF amyloids, which showed remarkably conserved periodicity characteristics. The uniformity of the ex vivo fibrils studied here contrasts with the amyloids derived from recombinant or synthetic proteins (Fig. 2), which revealed great polydispersity in terms of periodicity width and length. Our findings suggest that the mechanisms of amyloid formation in vitro may vary greatly from those occurring in vivo. An alternative explanation could be that amyloid formation in vivo is guided by complex interactions and conditions that are defined by the cellular or extracellular milieu (16) and are difficult to replicate in cell-free systems.

Previously published analysis of AL fibrils obtained from two patients showed that the fibrils formed two morphologically distinct aggregates that differed in width and periodicity length (14). Moreover, the two human-derived samples also presented distinct fibrillar characteristics, where one type of fibril revealed a width of  $\sim$ 11 nm and a pitch length distance of  $\sim$ 163 nm. The dimensions of these fibrils partially correspond with those of the AL fibrils that we analyzed. Our sample, however, revealed fibrils that were slightly wider and had a shorter pitch length. These differences may stem from the different methods used to obtain the micrographs (i.e., negative stain TEM and cryo-EM). It may also be caused by the fact that each patient develops fibrils of a different morphology.

Here, we show that MUS:OT NPs efficiently label amyloid fibrils and allow for rapid profiling of their polymorphism. This labeling can be used in cryo-EM, enabling direct detection and characterization of amyloid fibrils from ex vivo samples, with an image quality comparable to that achieved for amyloids obtained in vitro. Our findings also reveal striking morphological differences between the in vitro and ex vivo amyloid fibrils, consistent with emerging data pointing to the physiological milieu as the

key determinant of amyloid fibril strains. Our method does not require elaborate enrichment, seeding, or any other form of extensive sample processing: the native fibril is directly observable in its solvated state. We believe that our NPs can be used as a complementary tool in studying the polymorphic distribution of amyloid fibrils by facilitating and accelerating sample screening, data acquisition, and processing while requiring only minute amounts of sample. Moreover, the ability of the NPs to differently decorate polymorphic species open new doors in diagnostic strategies, as this would allow detailed characterization of fibril polymorphism of fibril strains in biological samples (plasma and cerebrospinal fluid) and morphological profiling of amyloids derived from postmortem brains or tissue biopsies.

## Material and Data Availability

All experimental procedures and data are included in the article and in *SI Appendix*. Experimental procedures for ligand and NPs synthesis and characterization, amyloid fibrils preparation and incubation with NPs, microscopy measurement, circular dichroism, and image analysis are described in *SI Appendix*.

**ACKNOWLEDGMENTS.** The authors acknowledge AC Immune SA for the generous gift of native PHFs. U.C. would like to acknowledge the funding received from the Swiss federal government agency (SERI), thanks to the European Union H2020-MSCA-ITN project iSwitch (Grant Agreement No. 642196). M.F. acknowledges support from the Deutsche Forschungsgemeinschaft (FA 456/27). This work was also partially supported by grants from the CHDI Foundation. The authors acknowledge Dr. Anne-Laure Mahul Mellier for careful review of the manuscript.

1. F. Chiti, C. M. Dobson, Protein misfolding, amyloid formation, and human disease: A summary of progress over the last decade. *Annu. Rev. Biochem.* **86**, 27–68 (2017).
2. F. Chiti, C. M. Dobson, Protein misfolding, functional amyloid, and human disease. *Annu. Rev. Biochem.* **75**, 333–366 (2006).
3. T. P. J. Knowles, M. Vendruscolo, C. M. Dobson, The amyloid state and its association with protein misfolding diseases. *Nat. Rev. Mol. Cell Biol.* **15**, 384–396 (2014).
4. D. Eisenberg, M. Jucker, The amyloid state of proteins in human diseases. *Cell* **148**, 1188–1203 (2012).
5. A. D. Wechalekar, J. D. Gillmore, P. N. Hawkins, Systemic amyloidosis. *Lancet* **387**, 2641–2654 (2016).
6. A. K. Paravastu, R. D. Leapman, W. M. Yau, R. Tycko, Molecular structural basis for polymorphism in Alzheimer's  $\beta$ -amyloid fibrils. *Proc. Natl. Acad. Sci. U.S.A.* **105**, 18349–18354 (2008).
7. R. Kodali, A. D. Williams, S. Chemuru, R. Wetzels, Abeta(1–40) forms five distinct amyloid structures whose  $\beta$ -sheet contents and fibril stabilities are correlated. *J. Mol. Biol.* **401**, 503–517 (2010).
8. L. Bousset *et al.*, Structural and functional characterization of two alpha-synuclein strains. *Nat. Commun.* **4**, 2575 (2013).
9. W. Zhang *et al.*, Heparin-induced tau filaments are polymorphic and differ from those in Alzheimer's and Pick's diseases. *eLife* **8**, 1–24 (2019).
10. X. Ni, R. P. McGlinchey, J. Jiang, J. C. Lee, Structural insights into  $\alpha$ -Synuclein fibril polymorphism: Effects of Parkinson's disease-related C-terminal truncations. *J. Mol. Biol.* **431**, 3913–3919 (2019).
11. J. Meinhardt, C. Sachse, P. Hortschansky, N. Grigorieff, M. Fändrich, Abeta(1–40) fibril polymorphism implies diverse interaction patterns in amyloid fibrils. *J. Mol. Biol.* **386**, 869–877 (2009).
12. C. S. Goldsburly, G. J. S. Cooper, K. N. Goldie, S. A. Mu, Polymorphic fibrillar assembly of human Amylin. *J. Struct. Biol.* **119**, 17–27 (1997).
13. A. W. P. Fitzpatrick *et al.*, Cryo-EM structures of tau filaments from Alzheimer's disease. *Nature* **547**, 185–190 (2017).
14. K. Annamalai *et al.*, Polymorphism of amyloid fibrils in vivo. *Angew. Chem. Int. Ed. Engl.* **55**, 4822–4825 (2016).
15. J. L. Guo *et al.*, Distinct  $\alpha$ -synuclein strains differentially promote tau inclusions in neurons. *Cell* **154**, 103–117 (2013).
16. C. Peng *et al.*, Cellular milieu imparts distinct pathological  $\alpha$ -synuclein strains in  $\alpha$ -synucleinopathies. *Nature* **557**, 558–563 (2018).
17. C. Peng, R. J. Gathagan, V. M. Y. Lee, Distinct  $\alpha$ -Synuclein strains and implications for heterogeneity among  $\alpha$ -Synucleinopathies. *Neurobiol. Dis.* **109**, 209–218 (2018).
18. W. Peelaerts, L. Bousset, V. Baekelandt, R. Melki,  $\alpha$ -Synuclein strains and seeding in Parkinson's disease, incidental Lewy body disease, dementia with Lewy bodies and multiple system atrophy: Similarities and differences. *Cell Tissue Res.* **373**, 195–212 (2018).
19. W. Qiang, W.-M. Yau, J.-X. Lu, J. Collinge, R. Tycko, Structural variation in amyloid- $\beta$  fibrils from Alzheimer's disease clinical subtypes. *Nature* **541**, 217–221 (2017).
20. J.-X. Lu *et al.*, Molecular structure of  $\beta$ -amyloid fibrils in Alzheimer's disease brain tissue. *Cell* **154**, 1257–1268 (2013).
21. D. W. Sanders *et al.*, Distinct tau prion strains propagate in cells and mice and define different tauopathies. *Neuron* **82**, 1271–1288 (2014).
22. R. Tycko, Amyloid polymorphism: Structural basis and neurobiological relevance. *Neuron* **86**, 632–645 (2015).
23. J. Adamcik, R. Mezzenga, Amyloid polymorphism in the protein folding and aggregation energy landscape. *Angew. Chem. Int. Ed. Engl.* **57**, 8370–8382 (2018).
24. D. S. Eisenberg, M. R. Sawaya, Structural studies of amyloid proteins at the molecular level. *Annu. Rev. Biochem.* **86**, 69–95 (2017).
25. T. Eichner, S. E. Radford, A diversity of assembly mechanisms of a generic amyloid fold. *Mol. Cell* **43**, 8–18 (2011).
26. M. Zhu, P. O. Souillac, C. Ionescu-Zanetti, S. A. Carter, A. L. Fink, Surface-catalyzed amyloid fibril formation. *J. Biol. Chem.* **277**, 50914–50922 (2002).
27. A. T. Petkova *et al.*, Self-Propagating, Molecular-Level Polymorphism in Alzheimer's  $\beta$  Amyloid Fibrils. *Science* **307**, 261–265 (2005).
28. J. Gath *et al.*, Unlike twins: An NMR comparison of two  $\alpha$ -synuclein polymorphs featuring different toxicity. *PLoS One* **9**, e90659 (2014).
29. M. Fändrich, M. Schmidt, N. Grigorieff, Recent progress in understanding Alzheimer's  $\beta$ -amyloid structures. *Trends Biochem. Sci.* **36**, 338–345 (2011).
30. M. Oh, Y. Li, Y. Cheng, T. Walz, Negative staining and image classification—Powerful tools in modern electron microscopy. *Biol. Proced. Online* **6**, 23–34 (2004).
31. M. Vilar *et al.*, The fold of alpha-synuclein fibrils. *Proc. Natl. Acad. Sci. U.S.A.* **105**, 8637–8642 (2008).
32. W. Page Faulk, G. Malcolm Taylor, Communication to the editors. An immunocolloid method for the electron microscope. *Immunochimistry* **8**, 1081–1083 (1971).
33. S. Reig *et al.*, Immunogold labelling of paired helical filaments and amyloid fibrils by specific monoclonal and polyclonal antibodies. *Acta Neuropathol.* **90**, 441–447 (1995).
34. K. A. Conway, J. D. Harper, P. T. Lansbury, Jr, Fibrils formed in vitro from  $\alpha$ -synuclein and two mutant forms linked to Parkinson's disease are typical amyloid. *Biochemistry* **39**, 2552–2563 (2000).
35. R. Hermann, P. Walther, M. Müller, Immunogold labeling in scanning electron microscopy. *Histochem. Cell Biol.* **106**, 31–39 (1996).
36. H. Skaat, S. Margel, Synthesis of fluorescent-maghemite nanoparticles as multimodal imaging agents for amyloid- $\beta$  fibrils detection and removal by a magnetic field. *Biochem. Biophys. Res. Commun.* **386**, 645–649 (2009).
37. H. Skaat, M. Sorci, G. Belfort, S. Margel, Effect of maghemite nanoparticles on insulin amyloid fibril formation: Selective labeling, kinetics, and fibril removal by a magnetic field. *J. Biomed. Mater. Res. A* **91**, 342–351 (2009).
38. J. Kumar *et al.*, Detection of amyloid fibrils in Parkinson's disease using plasmonic chirality. *Proc. Natl. Acad. Sci. U.S.A.* **115**, 3225–3230 (2018).
39. Y. H. Liao, Y. J. Chang, Y. Yoshiike, Y. C. Chang, Y. R. Chen, Negatively charged gold nanoparticles inhibit Alzheimer's amyloid- $\beta$  fibrillization, induce fibril dissociation, and mitigate neurotoxicity. *Small* **8**, 3631–3639 (2012).
40. Y. Yoshiike, T. Akagi, A. Takashima, Surface structure of amyloid- $\beta$  fibrils contributes to cytotoxicity. *Biochemistry* **46**, 9805–9812 (2007).
41. N. Zheng, J. Fan, G. D. Stucky, One-step one-phase synthesis of monodisperse noble-metallic nanoparticles and their colloidal crystals. *J. Am. Chem. Soc.* **128**, 6550–6551 (2006).
42. Q. Ong, Z. Luo, F. Stellacci, Characterization of ligand shell for mixed-ligand coated gold nanoparticles. *Acc. Chem. Res.* **50**, 1911–1919 (2017).
43. A. C. Wilson, B. N. Dugger, D. W. Dickson, D. S. Wang, TDP-43 in aging and Alzheimer's disease—A review. *Int. J. Clin. Exp. Pathol.* **4**, 147–155 (2011).
44. J. Adamcik *et al.*, Understanding amyloid aggregation by statistical analysis of atomic force microscopy images. *Nat. Nanotechnol.* **5**, 423–428 (2010).
45. Y. Wang, E. Mandelkow, Tau in physiology and pathology. *Nat. Rev. Neurosci.* **17**, 5–21 (2016).
46. P. Ganguly *et al.*, Tau assembly: The dominant role of PHF6 (VQIVYK) in microtubule binding region repeat R3. *J. Phys. Chem. B* **119**, 4582–4593 (2015).
47. M. Margittai, R. Langen, Side chain-dependent stacking modulates tau filament structure. *J. Biol. Chem.* **281**, 37820–37827 (2006).
48. K. Minoura *et al.*, Different associational and conformational behaviors between the second and third repeat fragments in the tau microtubule-binding domain. *Eur. J. Biochem.* **271**, 545–552 (2004).
49. J. B. Warner *et al.*, Monomeric Huntingtin Exon 1 has similar overall structural features for wild-type and pathological polyglutamine lengths. *J. Am. Chem. Soc.* **139**, 14456–14469 (2017).
50. S. Bedrood *et al.*, Fibril structure of human islet amyloid polypeptide. *J. Biol. Chem.* **287**, 5235–5241 (2012).
51. T. Watanabe-Nakayama *et al.*, High-speed atomic force microscopy reveals structural dynamics of amyloid  $\beta_{1-42}$  aggregates. *Proc. Natl. Acad. Sci. U.S.A.* **113**, 5835–5840 (2016).
52. M. Schweighauser *et al.*, Structures of  $\alpha$ -synuclein filaments from multiple system atrophy. <https://doi.org/10.1101/2020.02.05.935619> (6 February 2020).
53. T. Strohäker *et al.*, Structural heterogeneity of  $\alpha$ -synuclein fibrils amplified from patient brain extracts. *Nat. Commun.* **10**, 5535 (2019).
54. M. Schmidt *et al.*, Cryo-EM structure of a transthyretin-derived amyloid fibril from a patient with hereditary ATTR amyloidosis. *Nat. Commun.* **10**, 5008 (2019).
55. A. K. Paravastu, I. Qahwash, R. D. Leapman, S. C. Meredith, R. Tycko, Seeded growth of  $\beta$ -amyloid fibrils from Alzheimer's brain-derived fibrils produces a distinct fibril structure. *Proc. Natl. Acad. Sci. U.S.A.* **106**, 7443–7448 (2009).
56. K. P. Scherpelz, J. X. Lu, R. Tycko, S. C. Meredith, "Preparation of amyloid fibrils seeded from brain and meninges" in *Protein Amyloid Aggregation. Methods in Molecular Biology*, D. Eliezer, Ed. (Humana Press, 2016), pp. 299–312.
57. J. L. Jiménez, G. Tennent, M. Pepsy, H. R. Saibil, Structural diversity of ex vivo amyloid fibrils studied by cryo-electron microscopy. *J. Mol. Biol.* **311**, 241–247 (2001).
58. S. Assenza, J. Adamcik, R. Mezzenga, P. De Los Rios, Universal behavior in the mesoscale properties of amyloid fibrils. *Phys. Rev. Lett.* **113**, 268103 (2014).