



# MIT Open Access Articles

*Vol. 52, Issue 2 (The TRAPPIST-1 JWST Community Initiative)*

The MIT Faculty has made this article openly available. **Please share** how this access benefits you. Your story matters.

<b>As Published</b>	10.3847/25C2CFEB.AFBF0205
<b>Publisher</b>	American Astronomical Society
<b>Version</b>	Final published version
<b>Citable link</b>	<a href="https://hdl.handle.net/1721.1/135541">https://hdl.handle.net/1721.1/135541</a>
<b>Terms of Use</b>	Creative Commons Attribution 4.0 International license
<b>Detailed Terms</b>	<a href="https://creativecommons.org/licenses/by/4.0/">https://creativecommons.org/licenses/by/4.0/</a>

**Bulletin of the AAS • Vol. 52, Issue 2**

# **The TRAPPIST-1 JWST Community Initiative**

**Michaël Gillon<sup>1</sup>, Victoria Meadows<sup>2</sup>, Eric Agol<sup>2</sup>, Adam J. Burgasser<sup>3</sup>,  
Drake Deming<sup>4</sup>, René Doyon<sup>5</sup>, Jonathan Fortney<sup>6</sup>, Laura Kreidberg<sup>7</sup>,  
James Owen<sup>8</sup>, Franck Selsis<sup>9</sup>, Julien de Wit<sup>10</sup>, Jacob Lustig-Yaeger<sup>11</sup>,  
Benjamin V. Rackham<sup>10</sup>**

<sup>1</sup>Astrobiology Research Unit, University of Liège, Belgium,

<sup>2</sup>Department of Astronomy, University of Washington, USA,

<sup>3</sup>Department of Physics, University of California San Diego, USA,

<sup>4</sup>Department of Astronomy, University of Maryland at College Park, USA,

<sup>5</sup>Institute for Research in Exoplanets, University of Montreal, Canada,

<sup>6</sup>Other Worlds Laboratory, University of California Santa Cruz, USA,

<sup>7</sup>Center for Astrophysics | Harvard and Smithsonian, USA,

<sup>8</sup>Department of Physics, Imperial College London, United Kingdom,

<sup>9</sup>Laboratoire d'Astrophysique de Bordeaux, University of Bordeaux, France,

<sup>10</sup>Department of Earth, Atmospheric, and Planetary Sciences, MIT, USA,

<sup>11</sup>Johns Hopkins University Applied Physics Laboratory, Laurel, MD, USA

**Published on:** Dec 02, 2020

**DOI:** 10.3847/25c2cfef.afbf0205

**License:** [Creative Commons Attribution 4.0 International License \(CC-BY 4.0\)](https://creativecommons.org/licenses/by/4.0/)

## ABSTRACT

The upcoming launch of the James Webb Space Telescope (JWST) combined with the unique features of the TRAPPIST-1 planetary system should enable the young field of exoplanetology to enter into the realm of temperate Earth-sized worlds. Indeed, the proximity of the system (12pc) and the small size (0.12 R) and luminosity (0.05% L) of its host star should make the comparative atmospheric characterization of its seven transiting planets within reach of an ambitious JWST program. Given the limited lifetime of JWST, the ecliptic location of the star that limits its visibility to 100d per year, the large number of observational time required by this study, and the numerous observational and theoretical challenges awaiting it, its full success will critically depend on a large level of coordination between the involved teams and on the support of a large community. In this context, we present here a community initiative aiming to develop a well-defined sequential structure for the study of the system with JWST and to coordinate on every aspect of its preparation and implementation, both on the observational (e.g. study of the instrumental limitations, data analysis techniques, complementary space-based and ground-based observations) and theoretical levels (e.g. model developments and comparison, retrieval techniques, inferences). Depending on the outcome of the first phase of JWST observations of the planets, this initiative could become the seed of a major JWST Legacy Program devoted to the study of TRAPPIST-1.

**Keywords:** planetary systems, star and planet formation, stars and stellar evolution

## **JWST & TRAPPIST-1: Towards the spectroscopic study of potentially habitable exoplanets**

Since the seminal discovery of 51 Pegasi b [1], more than four thousands exoplanets have been detected at an ever increasing rate, including a steeply growing fraction of planets significantly smaller than Uranus and Neptune, some even smaller than our Earth. In parallel, many projects aiming to *characterize* exoplanets have been developed during the last two decades, notably bringing the first pieces of information on the atmospheric properties of several dozens of exoplanets. Most of these atmospheric studies have been made possible by the transiting configuration of the probed planets. Indeed, the special geometrical configuration of transiting planets offers the detailed study of their atmospheres without the cost of spatially resolving them from their host stars [2]. The first atmospheric studies of transiting "hot Jupiters" (e.g. [3][4]) and "hot Neptunes" (e.g. [5][6]) have provided initial glimpses at the atmospheric chemical composition, vertical pressure-temperature profiles, albedos, and circulation patterns of extrasolar worlds (see [7] for a recent review). Within the

last decade, such atmospheric studies have been extended to smaller and/or cooler planets like the hot rocky worlds 55 Cnc e [8][9] and LHS3844 b [10] or the more temperate mini-Neptunes GJ1214 b [11] and K2-18 b [12].

Extending further such studies to rocky worlds orbiting within the circumstellar habitable zone (HZ) of their star (e.g. [13]) would make it possible to probe the atmospheric and surface conditions of potentially habitable worlds, to explore their atmospheric compositions for chemical disequilibria of biological origins [14], and, maybe, to reveal the existence of life beyond our solar system. This extension is not possible with the astronomical facilities currently in operation, including with the Hubble Space Telescope (HST), but it could be initiated from 2021 with the launch of JWST. Thanks to its much improved infrared spectral coverage, sensitivity, and resolution over HST, JWST should in theory be able to probe by eclipse (i.e. transit or occultation) spectroscopy the atmospheric composition of a transiting temperate planet similar in size and mass to Earth. Nevertheless, signal-to-noise considerations result in the possibility of such an achievement only for a planet transiting a very nearby (up to 10-20 pc) and very-late-type ( $\sim$ M5 and later) M-dwarf [3][15][16]. Indeed, the same planet orbiting a bigger star will produce smaller transmission and emission signals, and this drop is very sharp when one gets away from the bottom of the main-sequence. For instance, Figure 1 shows transmission spectra for three photochemically self-consistent Earth-like planets around three different M dwarfs with different radii. The relative transit depth of the prominent near-IR CH<sub>4</sub> bands of an Earth-like planet orbiting an M8-type dwarf star is expected to be  $\sim$ 50ppm, but only  $\sim$ 5 ppm for a M3.5V host star. The floor noise of JWST instruments is expected to be of at least 10 ppm [17], this 'JWST opportunity' is thus clearly limited to the latest-type red dwarfs. This conclusion is strengthened by the habitable zone moving closer to the star as one moves down the main-sequence. For the latest-type red dwarfs, this zone corresponds to orbital periods of only a few days, making possible to stack dozens if not hundreds of eclipse observations within the JWST lifetime, and thus to maximize the final signal-to-noise.

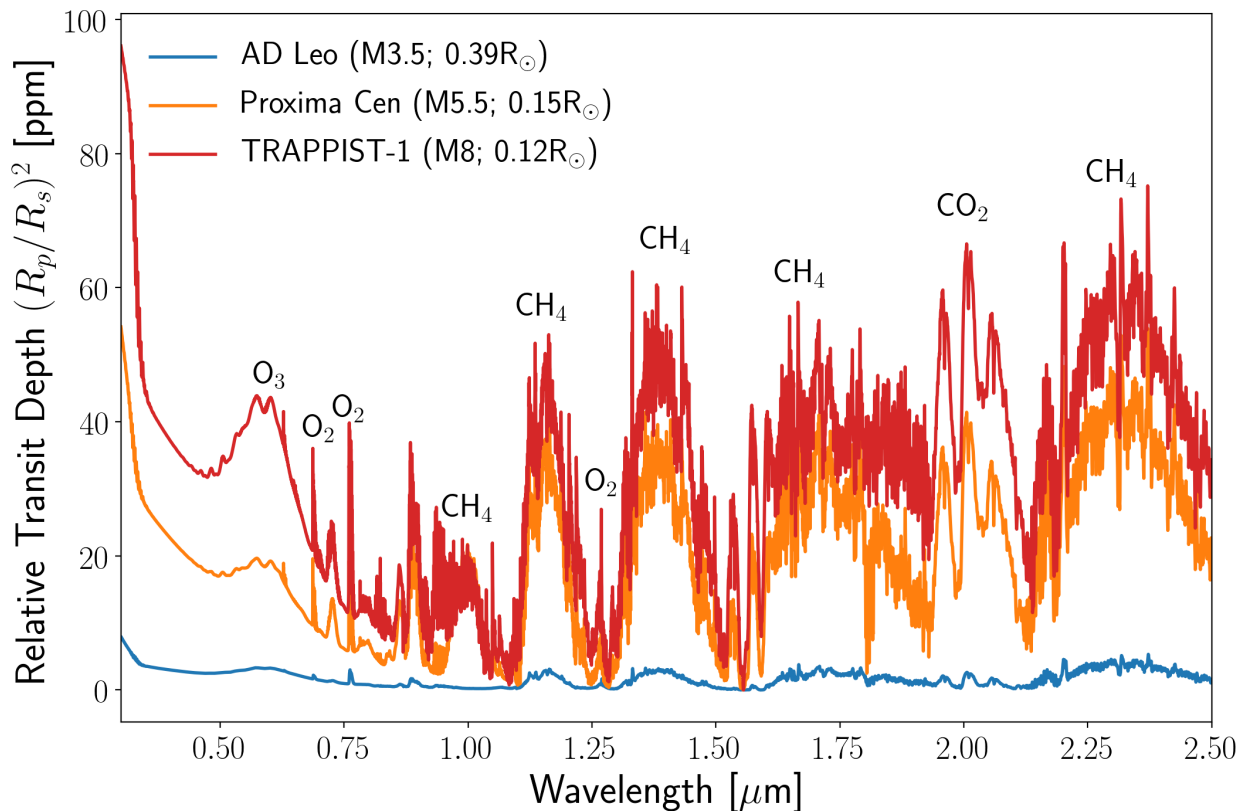


Figure 1: Transmission spectra for three photochemically self-consistent Earth-like planets around three M dwarfs with different radii. Original references for the transmission spectra simulations are Segura et al., 2005 and Schwietzman et al., 2016 for AD Leo, Meadows et al., 2018 for Proxima Cen, and Meadows et al. (in prep) for TRAPPIST-1.

Such considerations motivated the emergence of several projects aiming to search the nearest M-dwarfs for transits before the launch of JWST, e.g. MEarth [18] or TESS [19]. Among them, the ground-based survey SPECULOOS [20][21][22] chose to gamble on ‘ultracool’ (i.e. later than M6) dwarf stars, at the bottom of the main-sequence, despite that most theoretical expectations presented such super-low-mass ( $\leq 0.1M_{\odot}$ ) stars as unlikely to form short-period rocky planets similar in size to Earth (e.g. [23]). While SPECULOOS started officially its operation in 2019 [24][25], it was in fact initiated in 2011 as a prototype survey targeting a limited sample of fifty nearby ultracool dwarfs with the TRAPPIST 60cm robotic telescope in Chile [26]. This prototype aimed only to assess the feasibility of SPECULOOS, but it did much better than that. Indeed, in 2015, it detected three transiting Earth-sized planets in orbit around a Jupiter-sized M8-type star 12 parsec away [27]. In 2016, the intensive photometric follow-up of the star (renamed TRAPPIST-1) - with a critical contribution of the Spitzer Space Telescope - revealed that it was in fact orbited by seven transiting Earth-sized planets, all of them close or within the HZ of the star [28]. With semi-major axes ranging from 1 to 6% of an astronomical unit, these planets form a super compact planetary system whose long-term stability is ensured by its resonant architecture [29]. While transit photometry brought precise measurements of the planets’ sizes [30], their strong mutual interactions made possible to infer initial estimates of their masses

using the transit timing variations method [31][32], the resulting densities suggesting rocky compositions maybe more volatile-rich than Earth's ([33], Agol et al. in prep.).

The discovery of TRAPPIST-1 was followed by several theoretical studies aiming to assess the potential of JWST to probe the atmospheric composition of its planets [34][35][36][37][38][17][39]. These studies converged on the following picture: assuming significant atmospheres around the planets, they could be detected by JWST in transmission –and in emission for the two inner planets– assuming the observation of a number of transits/occultations ranging from less than ten to more than one hundred, depending on the atmospheric properties of the planets (composition, cloud coverage) and the still unknown instrumental performances of JWST. The JWST mission will thus bring an exciting opportunity to learn about the atmospheric properties of a significant sample of temperate Earth-sized planets, but at the cost of a particularly telescope-time-consuming project that will inevitably face many challenges in all its aspects: telescope time granting, observation scheduling, global strategy, coordination between the different involved teams, constant reappraisal of the strategy as a function of the actual instrumental limitations and first results, data analysis techniques, complementary space-based and ground-based observations, etc. In the following sections, we review in detail these different challenges, to finally conclude that such an ambitious program would strongly benefit from the support of a community initiative aiming to develop a well-defined sequential structure for the study of the system with JWST and to coordinate on every aspect of its preparation and implementation, both on the observational and theoretical levels. But first we examine the uniqueness of TRAPPIST-1 in the next section.

## On the uniqueness of TRAPPIST-1

One could argue that it is too early to consider TRAPPIST-1 as a prime target for a large JWST program while better targets in the temperate Earth-sized regime could be about to be found around nearer and/or smaller stars by TESS [40] or other transit surveys. For instance, a recent study shows that the collisional absorption signature of O<sub>2</sub> could be detected by JWST for a TRAPPIST-1e-like planet, but only if located at less than 5pc [41]. To assess this ‘better target to come’ hypothesis, we cross-matched the Gaia DR2 catalog [42] with the 2MASS point-source catalog [43] to build a list of M-dwarfs and L-dwarfs within 40pc (see Annex A). For each of them, we estimated the basic physical parameters (mass, size, effective temperature), and then computed the value of a metric for JWST transmission spectroscopy in the near-infrared (with NIRSPEC in prism mode) of a putative transiting ‘Earth-like’ planet, i.e. with the same mass, size, and equilibrium temperature ( $T_{eq}$ ) than our planet. We also performed the same exercise for occultation photometry in the mid-infrared (with MIRI in imaging mode) for an Earth-sized planet with an irradiation four times larger that of Earth (as TRAPPIST-1b), at the upper limit of the temperate regime ( $T_{eq} \sim 400\text{K}$ ).

The details of these analyses are described in Annex A. Their results are summarized in Fig. 2. For near-infrared transmission spectroscopy of an ‘Earth-like’ planet, only 44 nearby dwarfs turn out to have a metric larger than TRAPPIST-1. Their spectral types range from M5.5 to L3.5. The mean transit probability of the assumed planets is  $\sim 2.5\%$ . Except if assuming a particularly high frequency for such planets around ultracool dwarfs, it is thus likely that TRAPPIST-1d, e, f, and g are the best existing targets for JWST in the ‘potentially habitable Earth-sized’ regime. Most of these dwarfs ( $\sim 70\%$ ) have already been explored for transits by the SPECULOOS transit survey [20], without success except for TRAPPIST-1.

For mid-infrared occultation photometry of TRAPPIST-1b-like planets, we find that 131 nearby dwarfs have a better metric than TRAPPIST-1, most of them being of later spectral type. Their mean transit probability is  $\sim 6\%$ . The frequency of short-period Earth-sized planets around ultracool dwarfs is still mostly unconstrained, but except if it is particularly low, there is a significant probability that a JWST target at least as good as TRAPPIST-1b could be found soon by SPECULOOS or another ultracool dwarf photometry survey (e.g. [44]). Still, if this planet exists, it is unlikely to benefit from all the extraordinary advantages brought by TRAPPIST-1:

- Unlike TRAPPIST-1, it could belong to a non-resonant system, as most of the known compact systems [45]. In this case, the precise measurement of the planet’s mass should have to rely on the radial velocity (RV) technique instead of the TTV one. Because the host star/brown dwarf will be very faint in the visible, the RV measurements will have to be performed in the near-infrared (NIR). Even with the next-generation high-precision NIR spectrographs like SPIRou [46] or NIRPS [47], reaching the required  $\text{sub-m.s}^{-1}$  precision level will be extremely challenging. In fact, such a level of RV precision has still to be demonstrated in the NIR, and furthermore reaching it could just be impossible if the NIR RV ‘jitter’ of the host dwarf is significant.
- If by chance the planet belongs to a compact resonant system, it is very likely that, unlike for TRAPPIST-1, its outer planets will not transit. Indeed, the level of coplanarity of the TRAPPIST-1 system is extremely high, and the inclination of its mean ecliptic is extraordinarily close to  $90^\circ$  ( $89.73 \pm 0.09$ , [30]). The probability that another nearby ultracool dwarf system is seen so well edge-on is very small. Even in case of strong TTVs due to a resonant configuration, constraining very accurately the planet’s mass by the TTV technique will be extremely challenging if not all planets of the system transit.
- While the atmospheric characterization of another ‘warm temperate’ ( $T_{eq} \sim 400\text{K}$ ) planet would be very interesting, TRAPPIST-1 provides us with the unique opportunity to study not one but seven temperate planets born from the same protoplanetary disk, orbiting the same star, sharing similar masses and sizes, but covering a larger range of irradiation (0.1 to 4 times the Earth’s, corresponding to  $T_{eq}$  ranging from 170 to 400K). It makes TRAPPIST-1 a unique laboratory to study the impact of the long pre-main sequence phase of ultracool dwarf stars

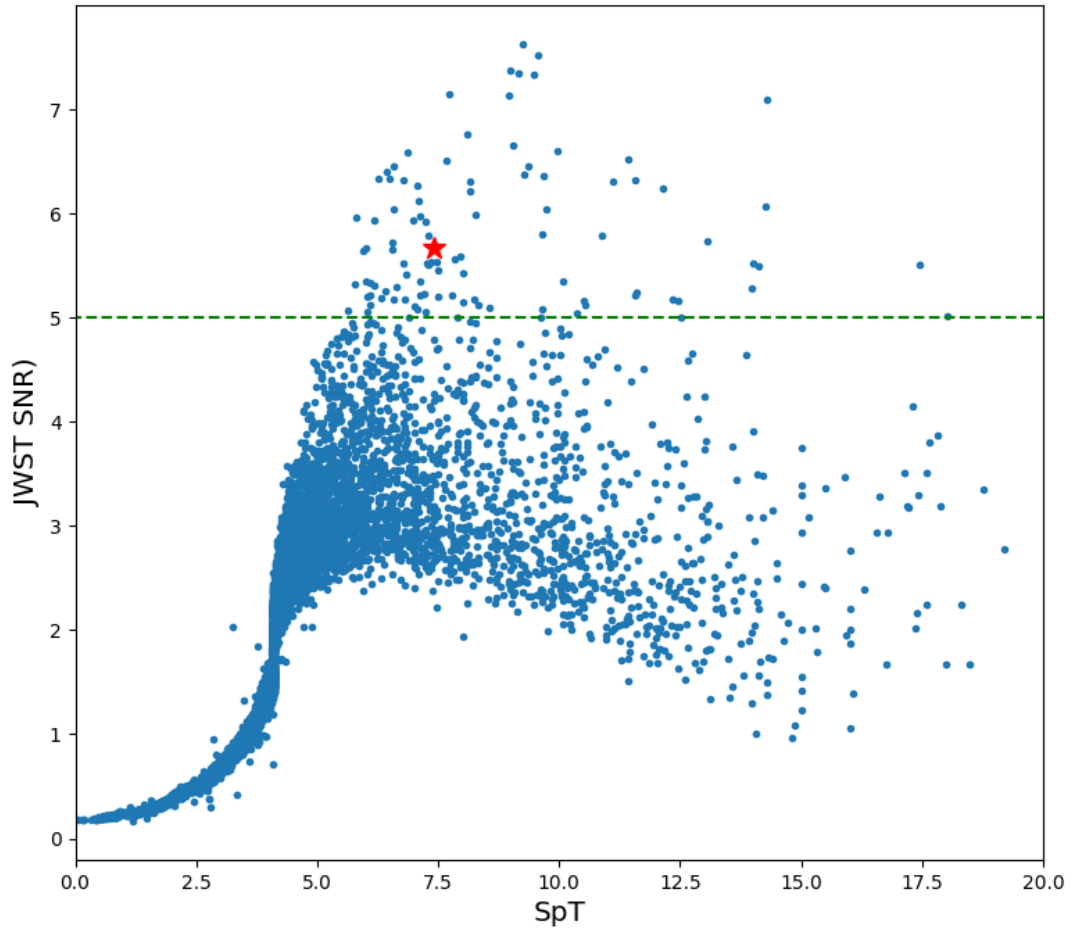


and their strong XUV luminosity, winds, and flares on the atmospheres and potential habitability of their temperate planets [48]. The comparative study of these seven planets could also enable one to detect a clear outlier planet in the system in terms of atmospheric properties, hinting to something exceptional having affected (e.g. a very energetic impact) or still affecting (e.g. super-volcanism, life) the planet.

- The densities measured for TRAPPIST-1 planets suggest rocky compositions enriched in volatile compounds relative to Earth [33], which favors the existence of significant atmospheres around them, as large volatile reservoirs could efficiently replenish these atmospheres in case of strong erosion by XUV photons and high-velocity ions from the star.
- TRAPPIST-1 is an old star [49] which, when compared to most ultracool dwarfs, rotates probably more slowly [29] and is less active and quieter in optical and NIR photometry [30][50]. Notably, the high stability of the quiescent flux of the star in the infrared [30] combined to the low frequency of its flares (one flare every 1-2d, one superflare every  $\sim 6$  months) is a big advantage for NIR/MIR eclipse spectrophotometry with JWST.
- Several studies [51][30][50][52] failed to detect for TRAPPIST-1 traces of a photosphere inhomogeneous and variable enough to significantly affect JWST transmission spectra of its planets through spot-crossing events [53] and/or through the so-called ‘transit light source’ effect originating from a difference in mean temperature between the mean photosphere of the star and the stellar chord transited by the planet [54].

All in one, we can thus safely conclude that the ‘better target to come’ hypothesis is extremely unlikely.





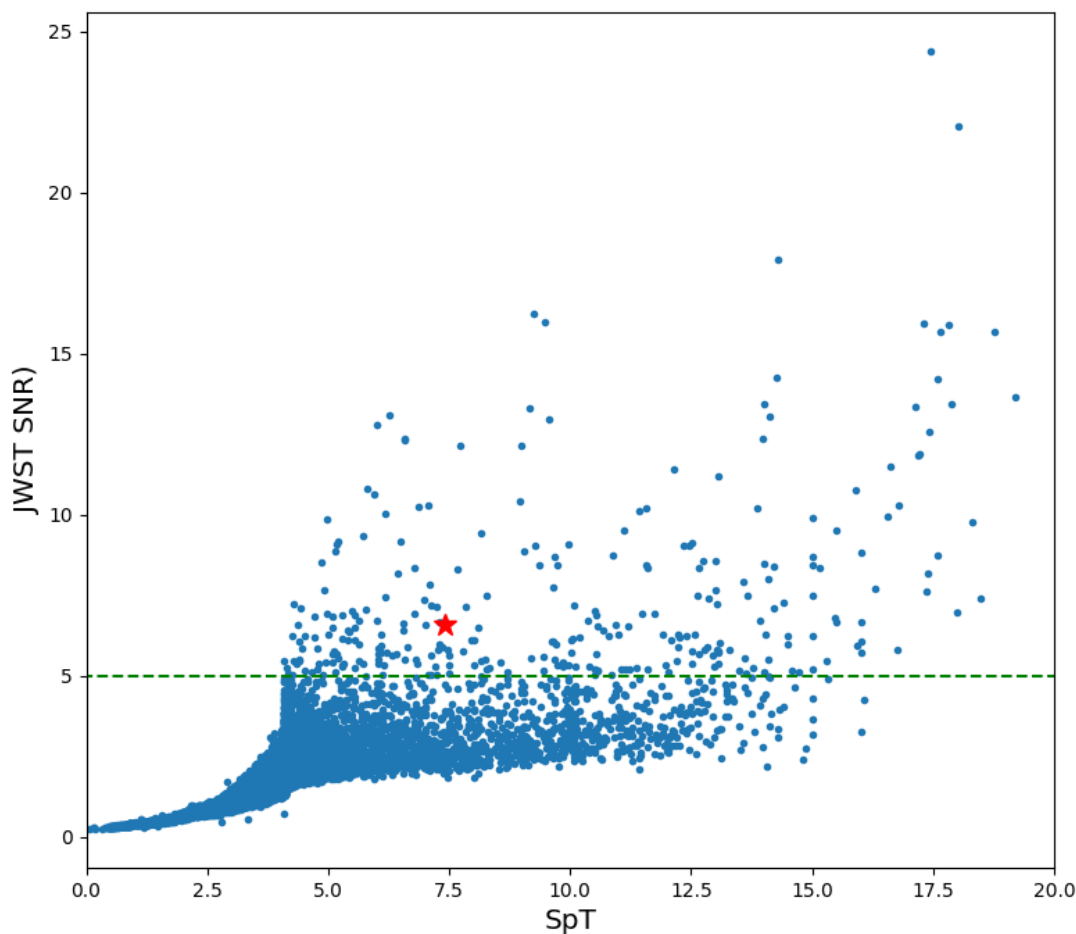


Figure 2: Top: Estimated signal-to-noise ratio (SNR) in transmission spectroscopy with JWST/NIRSPEC (assuming an ‘Earth-like’ planet, 200hr of JWST time, and a spectral sampling of 100nm) as a function of spectral type for the 14,163 M- and L-dwarfs within 40pc (see Annex A). TRAPPIST-1 is shown as a red star. Bottom: same but for occultation photometry with JWST/MIRI (assuming black-body spectra for the star and the planet; a tidally-locked Earth-sized planet with an irradiation four times larger than Earth, a Bond albedo of 0.1, and an inefficient heat distribution; and 25hr of JWST/MIRI observation in imaging mode within the F1000W (10  $\mu$ m) filter).

## The star TRAPPIST-1

To obtain the most precise and accurate measurements of the TRAPPIST-1 planets, we need to properly characterize its low-mass host star. Numerous studies to date have been able to firmly constrain many of the star’s physical properties, including average density (from the planet transits), bolometric luminosity, mass, radius, and effective temperature; and have ruled out the presence of wide stellar or brown dwarf companions [55][56][28][57][29][58][59]. Analysis of the high-energy output of TRAPPIST-1, including its degree of magnetic activity and flare frequency, have been critical for interpreting its atmosphere, structure, and evolution. Like other late-M dwarfs, TRAPPIST-1 produces numerous strong flares [59], has persistent  $H\alpha$  ( $L_{H\alpha}/L_{bol} = 2.5 - 4.0 \times 10^{-5}$ ) and X-ray

emission ( $L_X/L_{\text{bol}} = 2 - 4 \times 10^{-4}$ ), and may possess a strong surface magnetic field ( $600_{-400}^{+200}$  G; [60][61][62]). While in some of these measures TRAPPIST-1 is less active than other M8 dwarfs [49], its magnetic activity is sufficient to influence both its physical structure [63] and the potential habitability of its planets ([64][62][65], see §5.1).

Despite these numerous studies, the age, rotation period, magnetospheric structure, and detailed abundances are all relatively poorly constrained [49][55][66], and there remain mysteries as to its size and spectral properties. TRAPPIST-1's age remains highly uncertain as its spectral properties and kinematics give conflicting indicators [49][55], while standard age-dating metrics of rotation and activity are largely unreliable for ultracool dwarfs. Remarkably, despite many monitoring studies, even the star's rotation period remains uncertain [67][30], and there may be conflicting assessments as to the degree and thermal properties of magnetic spotting [68][52]. The star also displays a novel and unique pattern of flares which appear to be correlated with quasi-periodic bright spots [68]. These measures play a significant role in determining why TRAPPIST-1 has a lower average density than predicted by evolutionary models, with the roles of magnetism and metallicity both in play, despite uncertain measurements of both [49][56][63]. Continued study of TRAPPIST-1 from the ground and from space will be essential to addressing these mysteries, to better understanding the formation, evolution, and environment of its planetary system, and to interpreting and putting into perspective the JWST results.

## Dynamics, masses, and compositions of the TRAPPIST-1 planets

The TRAPPIST-1 planets lie in (or close to) a series of 3-body Laplace resonances [29], with an extremely co-planar configuration [69]. This dynamical configuration is characteristic of a small number of multi-planet systems found with Kepler [70], and indicates that the planets' orbits migrated inwards, capturing into resonance [71][72][73][74][75]. The resonant configuration also means that the planets are in close proximity to one another, which causes strong planet-planet perturbations, leading to significant TTVs.

The TTVs in this system turn out to yield strong constraints on the masses and orbits of the planets [28][33][76]. The small star causes the planets to be large relative to the star, giving dual advantages: the large mass-ratios of the planets to the star causes stronger TTVs (relative to the planet orbital periods), and the large depths of transit yield precise timing measurements. Transit-timing of TRAPPIST-1 planets yielded the first constraints on the masses *and* radii of Earth-sized planets near the same irradiation as Earth [33]. Monitoring over four years with a series of large Spitzer and ground-based programs, as well as K2, has led to more precise constraints upon the masses of the planets, as well as an improved forecast of the transit times of the planets for the future [76]. This transit monitoring effort is critical, as both masses and ephemerides are necessary for more accurate planning of JWST observations: the densities of the planets constrain possible bulk compositions; the masses are of

prime importance for the robust characterization of the planets' atmospheres [77]; the surface gravities of the planets may help to forecast the atmospheric scale-heights, and hence the spectroscopic transit depths; and the transit times will help to plan JWST observations.

Initial TTV analyses yielded low densities for the planets relative to an Earth-like composition (with the exception of planet e). These low densities indicated several possible scenarios for the planets' compositions: a lower fraction of mass in an iron core; a higher abundance of water [78][79][80]; or perhaps a thick atmosphere. Refined measurements of the planet densities recently narrowed these conclusions [76], finding that all seven planets' densities may be described with a single rocky mass-radius relation which is depleted in iron relative to Earth, with Fe 21 wt% versus 32 wt% for Earth, and otherwise Earth-like in composition. Alternatively, the planets may have an Earth-like composition, but enhanced in light elements, such as a surface water layer or a core-free structure with oxidized iron in the mantle. Figure 3 shows a plot of the posterior probability distribution from a dynamical and photodynamical fit to the planets, and assuming that the mass of the star is  $M_* = 0.0898 \pm 0.0023 M_\odot$  [81]. For proposers wishing to use these results in preparation for JWST, the stellar and planetary mass and radius posteriors, the posteriors of the dynamical model, and the forecast transit times are available at <https://doi.org/10.5281/zenodo.4060252>.

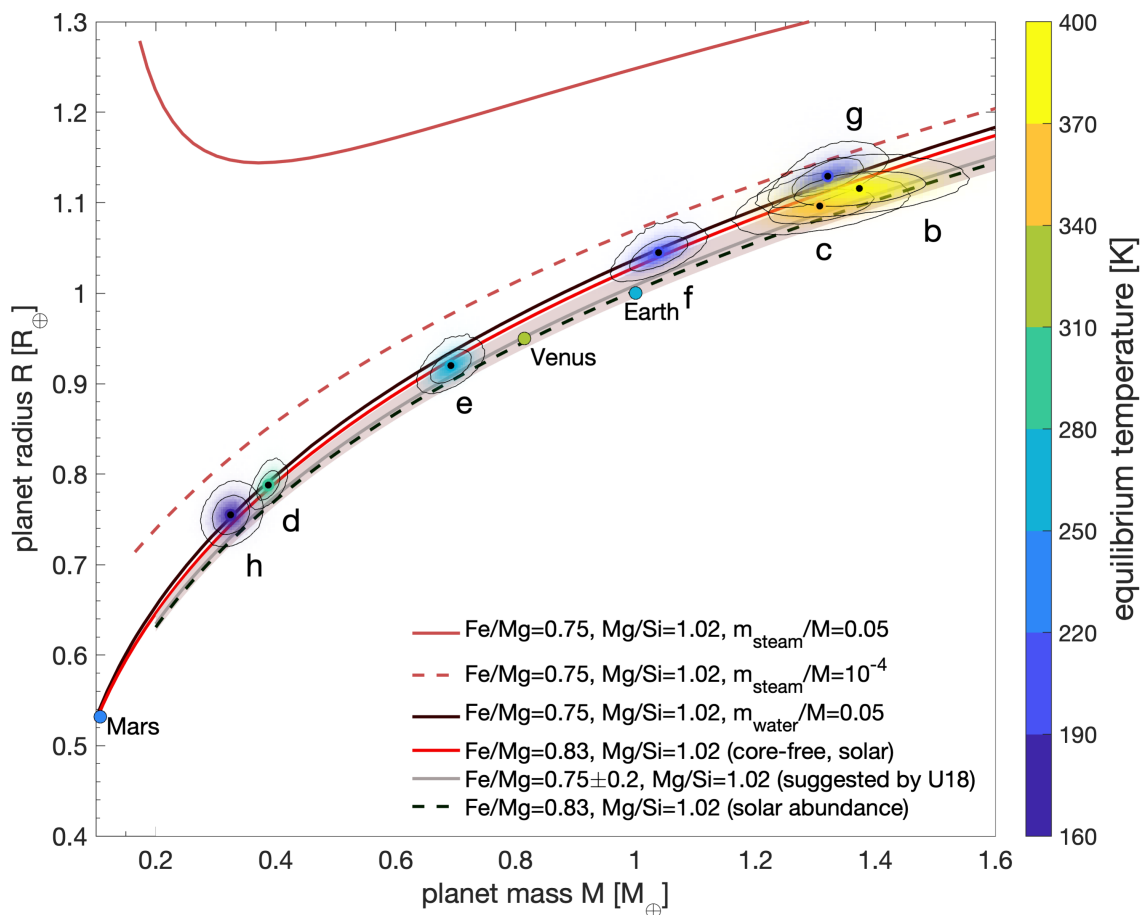


Figure 3: Mass versus radius for the TRAPPIST-1 planets based on a transit-timing analysis of 447 Spitzer and ground-based transits, as well as a photodynamic analysis of the Spitzer photometry. Also plotted are several models for the interior composition. Details may be found in Agol et al. (2020).

With JWST, numerous observations of the transit of each planet will be necessary to measure their transmission spectra. With each transit comes a transit time, impact parameter and duration measurement; together these will yield further constraints upon the dynamics of the planets, including their masses. The timing precisions of the transits will be of order of  $\approx 1$  second, which may be limited by stellar variability [76]. If every accessible transit were measured with JWST over 5 years (about  $10^3$  transits; Figure 4), then the masses of the planets may be constrained relative to the star with a precision of parts-per-thousand, or better [76]. Of course a smaller number of transits will be observed; nevertheless this indicates the potential power of JWST for constraining the dynamics of these planets, including the masses, which will yield better constraints upon the compositions. JWST will also yield more precise measurements of the transit durations, which will further constrain the density of the star and the coplanarity of the system [82]. An improved stellar density is needed for better constraining the densities of the planets as TTVs yield the *mass ratio* of the planets to the star,

while the transit depths yield the *radius ratio* of the planets to the star [83]; the planetary properties measured with JWST will likely be limited by the uncertainty in the stellar mass.

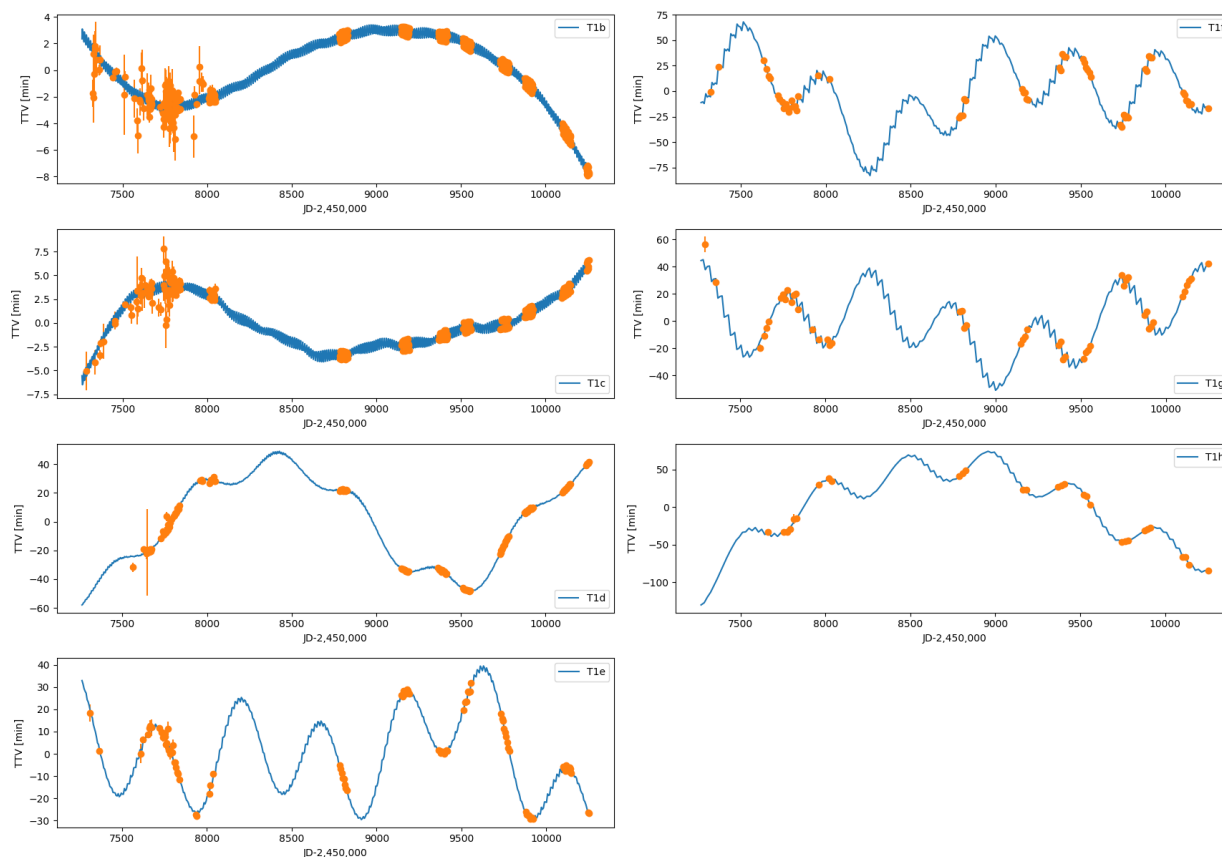


Figure 4: Simulated TTVs for JWST assuming all transits were observed for a 5-year mission.

Some remaining questions and puzzles exist in the dynamical analysis of the TRAPPIST-1 system. JWST will give the opportunity to search for additional planets via TTVs. The rotational state of the planets may affect the dynamics: if the planets are tidally synchronized, then perhaps the dynamical state may be influenced by the interior structure of the inner planet(s) [84][85]. A measurement of the  $k_2$  of the inner planet would help to constrain its composition ([86]; [87]). More theoretical work is needed to investigate these possibilities, and their potential detectability with JWST.

## On the possibility of atmospheres around the TRAPPIST-1 planets

### Theoretical expectations

The short orbital distances of TRAPPIST-1 planets combined to the large high-energy luminosity (XUV photons + winds) of their host star suggest that atmospheric escape should have played an important role in the evolution of their atmospheres [64][65][88][89][90][91][92][93][94]. Should the planets have reached their final masses before gas disc dispersal, core-accretion models imply that planets b, c, f & g were massive enough to accrete primordial hydrogen-dominated atmospheres that

represented a few percent of the planet's mass, unlike d, e & h [95]. Primordial evolution models for planets around M dwarfs [96] suggest that while b, c, d, e & h would have been able to lose such small amounts of H/He, it is not the case for planets f & g. Given that the measured densities [33] and atmospheric reconnaissance observations rule out large hydrogen-dominated atmospheres [97] including for these two later planets, it suggests that the TRAPPIST-1 planets did not accrete significant hydrogen-dominated atmospheres from their parent protoplanetary disc.

Given the measured densities of TRAPPIST-1 planets favor some fraction of volatiles and the location of some of them within the HZ, some authors have studied the loss of steam-dominated atmospheres. This is a particular pertinent questions as even though some of the planets may reside in the HZ now, the long pre-main-sequence lifetimes of late-type M dwarfs imply that the planets may have spend several 100 Myr in a runaway greenhouse state [98]. In such a state, greenhouse water can reach the thermosphere, where it can be photo-dissociated and undergo escape [99]. Hydrogen atoms are easier to lose; however, heavier elements such as oxygen can be “dragged” along too. However, if the oxygen remains a large abiotic oxygen-dominated atmosphere can be produced [98]. Both [98] and [100] have attempted to model the loss of water from TRAPPIST-1-like planets. While these studies show that the planets are vulnerable to water-loss, they disagree on the extent of volatiles lost on the final outcomes of TRAPPIST-1-like planets, indicating that the physics of water escape is not a solved problem and requires further study and observation. Finally, understanding whether or not the TRAPPIST-1 planets can retain a heavy element dominated atmosphere requires more theoretical work. There are no quantitative predictions for what atmospheric escape from heavy element dominated (e.g. CO<sub>2</sub>, H<sub>2</sub>O) atmospheres would look like over the lifetimes of the TRAPPIST-1 planets. This includes thermal escape models and non-thermal escape models [101][102]. Ultimately, observations of the presence of an atmosphere on the TRAPPIST-1 planets and their compositions will be of fundamental importance to constraining atmospheric evolution and escape models.

## First observational constraints from HST

When the planets were detected, it was directly realized that HST and its Wide Field Camera 3 instrument should be sensitive enough to reveal primordial cloud-free hydrogen-dominated atmospheres. This observation motivated the HST programs 14500, 14873 & 15304 (PI: J. de Wit) that first ruled out this atmospheric scenario for planets b and c in May 2016 [19], and then for planets d, e, f, and g over December 2016 and January 2017 [97][52]. The last planet of the system, planet h, has now been observed twice with HST which led to the same negative result (Garcia et al., in prep). Current observations are thus ruling out the presence of cloud-free hydrogen-dominated atmospheres for all planets of the TRAPPIST-1 system. However, high-altitude clouds and hazes are not expected in hydrogen-dominated atmospheres under such a range of isolation [103][104], which, when combined



to the theoretical arguments mentioned in Sec. 5.1, make primordial atmospheres around TRAPPIST-1 planets unlikely.

Subsequently, HST's unique UV capabilities were leveraged to search for the presence of hydrogen exospheres around the planets (program 14900 & 15304). The analysis of the first part of these data revealed to be complicated by the extreme faintness and the variability of the star in Lyman- $\alpha$  [88] [105]. Finally, the observations obtained for all seven planets failed to detect hydrogen exospheres around all planets, thereby placing an upper limit on their current atmospheric escape rates (manuscript in prep.).

In summary, the atmospheric reconnaissance of the system with HST has left three hypotheses for each planet: (1) no significant atmosphere, (2) a cloudy hydrogen-dominated atmosphere (unlikely), and (3) a compact atmosphere. JWST should be able to discriminate between these three scenarios.

## TRAPPIST-1 under the eye of JWST

### Transmission spectroscopy

The first step in characterizing significantly compact atmospheres around the TRAPPIST-1 planets is of course to detect them unambiguously. Low-resolution transit spectroscopy with JWST is likely to be the best method for atmospheric detection for all planets except the two inner ones. Planets b and c could have dayside thermal emissions large enough to be detected through the observation of a few of their occultations with MIRI, which could bring key complementary insights into the presence of an atmosphere around them [106]. Transit spectroscopy leverages the long slant path through the exoplanetary atmosphere to produce detectable molecular absorption signatures even if the atmosphere is thin, or largely masked by clouds. Moreover, the host star is bright in the infrared ( $K = 10.3$ ), providing high signal-to-noise ratios in, e.g., the wide bandpass ( $0.6\text{-}5\mu\text{m}$ ) of the NIRSpec Prism mode.

An in-depth study of how the atmospheres of the TRAPPIST-1 planets could be detected and characterized was reported by [39]. It confirmed that transit spectroscopy is optimum for atmospheric detection, particularly for temperate and cool planets. Figure 2 shows a simulated detection of the atmosphere of planet b in two transits, assuming it has a clear atmosphere with 10 bars of carbon dioxide. Figure 3 shows the number of transits or occultations needed for atmospheric detection of each planet in the system using both occultation spectroscopy with MIRI LRS and transit spectroscopy with the NIRSpec prism. The atmospheres of planets b and c are most easily detected, and most of the modeled atmospheres and planets can be detected in less than 10 transits (including clear, cloudy, and atmospheres containing Venus-like sulphuric acid aerosols).

Three TRAPPIST-1 planets will be targeted with transmission spectroscopy by JWST GTO programs, namely planets d (two transits with NIRSPEC, program 1201, PI: D. Lafrenière), e (four transits with NIRSPEC, program 1331, PI: N. Lewis) and f (five transits with NIRISS, program 1201). It is desirable to assess the potential of these GTO observations and, as of Cycle 1, to complement them with more transit observations, if required, and to perform similar observations for the four other planets. Indeed, the detailed atmospheric characterization of some of these planets could require the observation of dozens of eclipses (e.g. [39]), while JWST's mission lifetime could be as short as 5.5 yr. Furthermore, TRAPPIST-1 lies near the ecliptic and is only observable with JWST during two visibility windows of only  $\sim 50$  days per year, limiting the number of transits or occultations observable per year to at most 65, for b, and down to 5 for h. It is thus crucial to start the atmospheric characterization of the seven planets as of Cycle 1, without waiting for the results for one given planet and/or one instrumental set-up to initiate more observations.

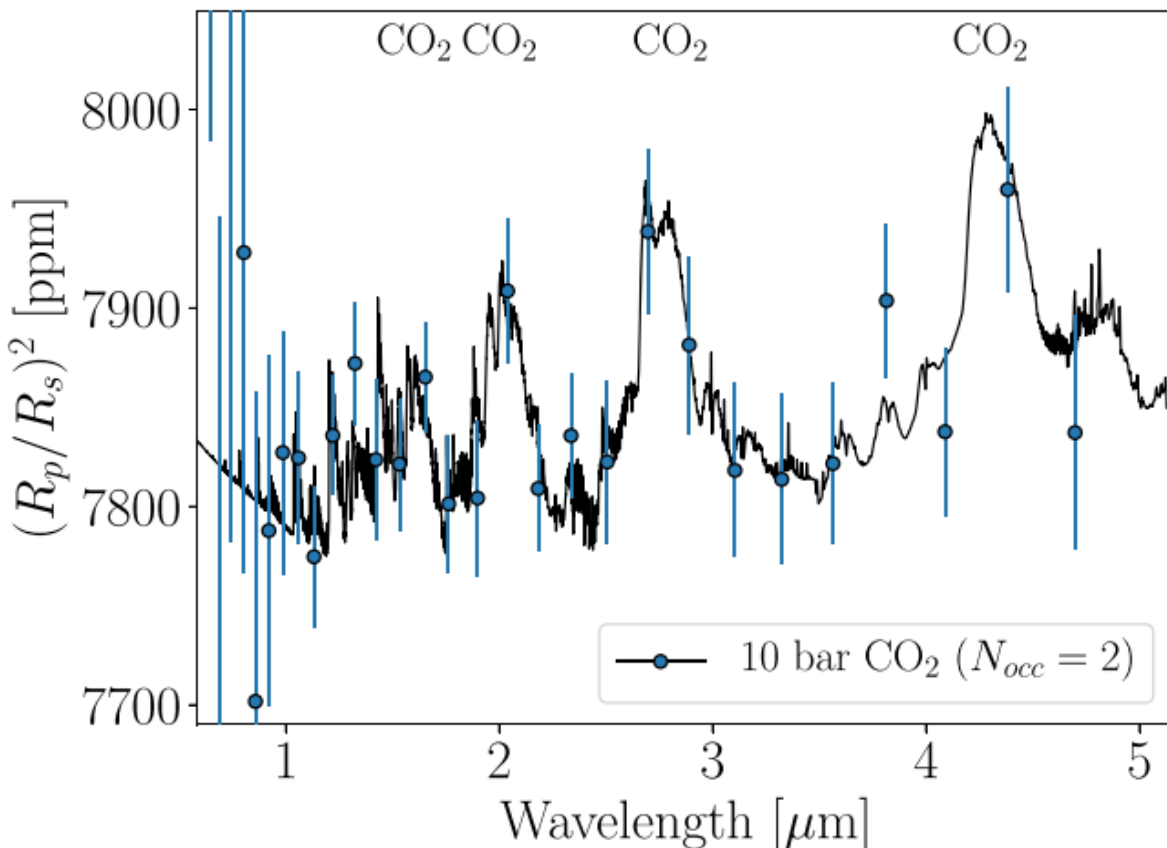


Figure 5: Example of a NIRSpec prism transit spectrum of TRAPPIST-1b, from Lustig-Yaeger, Meadows, and Linçowski (2019). This is for two transits, binned to a spectral resolving power of 8. Note the detections of the strong carbon dioxide bands.

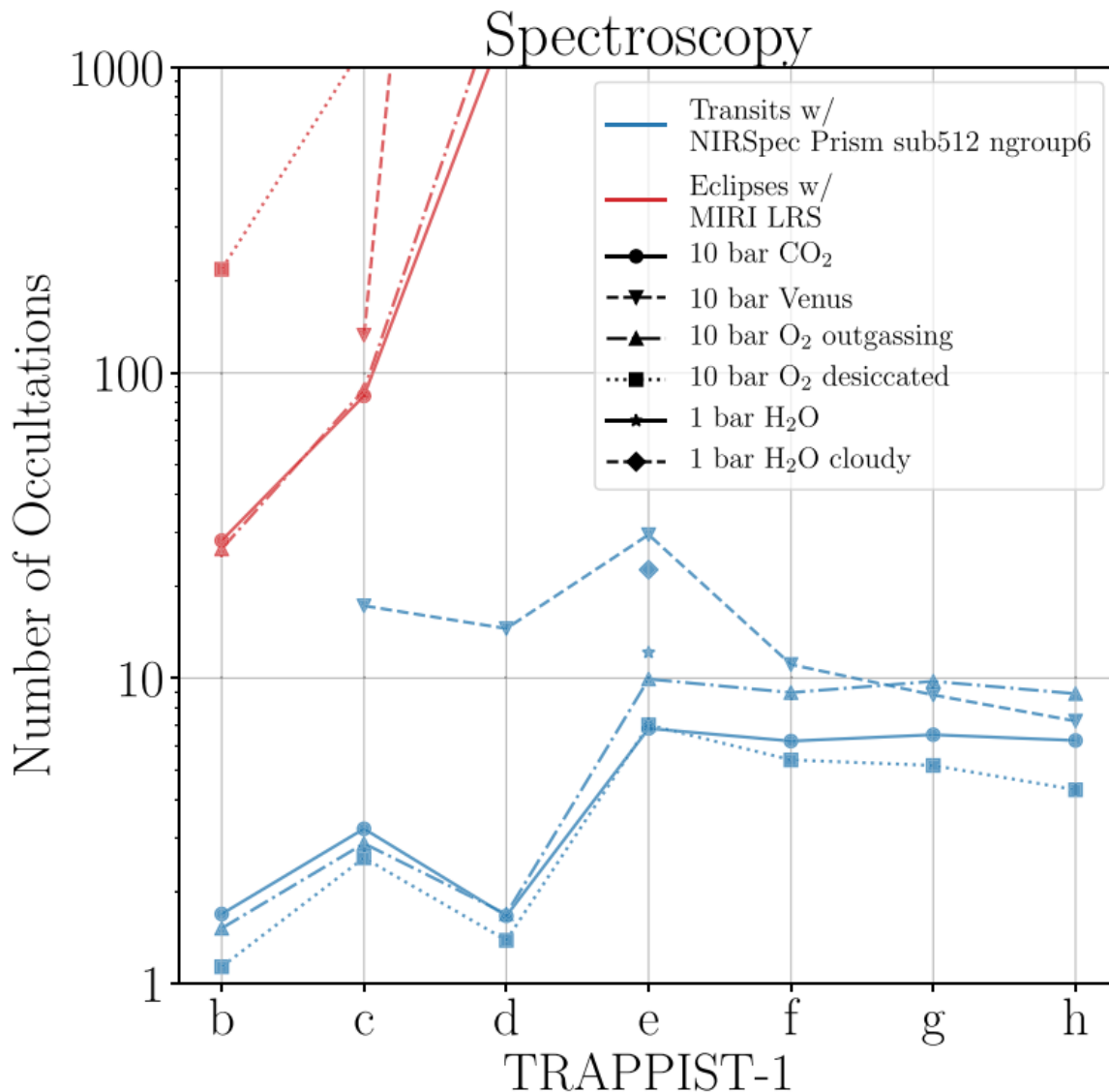


Figure 6: Total number of eclipses needed to detect atmospheres of various compositions using occultation emission spectroscopy with MIRI LRS (red lines) and transit transmission spectroscopy with NIRSpec prism (blue lines). From Lustig-Yaeger, Meadows, and Lincowski (2019).

### Emission + phase curve photometry

Observations of thermal emission from terrestrial planets – either through occultations or full-orbit phase curves – are a powerful probe of atmospheric properties, complementary to transmission spectroscopy. Thermal emission measurements constrain the planet’s global temperature structure, which is highly sensitive to the surface pressure and chemical composition of the atmosphere.

For tidally locked planets (as expected for the TRAPPIST-1 system), higher surface pressures lead to more efficient heat circulation from day-side to night-side, evening out the temperature on the two hemispheres. Conversely, the day-side temperature is maximized if no atmosphere is present. The

occultation depth or phase curve amplitude can therefore be used as a proxy for the planet's surface pressure [107][108][109][110][106]. This approach was recently tested with Spitzer observations of the  $1.3 R_{\oplus}$  planet LHS 3844b, which revealed such a large day-side temperature that thick atmospheres are ruled out, and the planet is most likely a bare rock [10]

This result motivates thermal emission measurements for a larger sample of terrestrial planets, over a wider range of equilibrium temperatures [111]. Atmospheres on cooler planets are expected to be less vulnerable to atmospheric escape, and are more likely to maintain stable secondary atmospheres [100]. The TRAPPIST-1 system has the coolest known terrestrial planets accessible for thermal emission observations (all below 400 Kelvin), so it provides an ideal environment to explore the existence of atmospheres over the widest possible range of isolation.

The innermost two TRAPPIST-1 planets (b and c) are strong candidates for occultation observations. Thermal emission from plausible model atmospheres can be detected in some MIRI photometric filters at  $5\sigma$  confidence with 5 - 10 occultation observations per filter [35]. Additional occultations can reveal the atmospheric composition in detail; conversely, if no atmosphere is present, occultation spectroscopy can potentially distinguish between different rocky surface compositions [112][39].

Thermal emission measurements have great potential to yield interesting scientific results regardless of the nature of the planet (in particular, whether it has an atmosphere). If an atmosphere is present, occultations and phase curves can probe the atmospheric circulation and chemical composition. Thermal emission is less sensitive to high-altitude clouds or haze that can mute the amplitude of spectral features in transmission spectra [113]. TRAPPIST-1b is already targeted by JWST/MIRI GTO program, with ten occultations planned, five within (program 1177, PI: T. Greene) and five outside (program 1279, PI: P.-O. Lagage) the CO<sub>2</sub> absorption band at 15  $\mu\text{m}$ . It is desirable to perform similar observations for planet c.

## Complementary observations

While TRAPPIST-1 has been observed intensively from the ground and from space since the discovery of its planets, it is necessary to pursue and even strengthen this effort to maximize the scientific return of its upcoming JWST observations.

The accurate and precise measurements of the masses of the planets is an absolute prerequisite to the derivation of strong inferences on their atmospheric and surface properties from JWST spectrophotometric data [77]. The TTV method has already enabled the measurement of the planet masses with great precision, but the analysis of the current transit timing dataset is still somewhat hindered by degeneracies and uncertainties, and it is highly desirable to pursue an intense photometric monitoring of the transits of the seven planets to improve further our understanding of the dynamics of the system, e.g. to detect a possible outer eighth planet, to quantify the effect of tides

on the dynamics of the inner planets, to reveal possible misalignments between the planets' orbits, etc, and to improve the determination of the planet's masses in the process (see §4). Furthermore, pursuing the photometric monitoring of the transits is required to produce the most accurate possible ephemeris for the JWST transit observations. So far, Spitzer has played a key role in this respect with a total of nearly 200 transits observed at high photometric precision [28][30][114]. Ground-based telescopes have also brought a significant contribution (e.g. [50][115]), but now that the Spitzer extended mission is ending, this contribution has to strengthen. Several ground-based facilities are already heavily involved in this transit monitoring: the eight robotic telescopes participating to the SPECULOOS survey (five in Chile, one in Tenerife, one in Mexico, and one in Morocco), UKIRT (Hawaii), and the Liverpool Telescope (La Palma). It is desirable to extend this monitoring to other facilities at other longitudes, to observe as many transits as possible during the visibility period of the star (from May to December).

Now that several high-resolution ( $\lambda/\Delta\lambda \approx 10^5$ ) near-IR spectrographs optimized to reach high Doppler precision are –or are close to be– operational, e.g. SPIRou [46] and NIRPS [47], these could be used to explore the system for more outer planets, but also to robustly measure the stellar  $v \sin i$  and test for spin-orbit alignment (both potentially achievable using the Rossiter-McLaughlin effect). Synoptic monitoring of TRAPPIST-1 from X-ray to radio wavelengths will improve our understanding of the physical and magnetospheric structure of the star, as well as our ability to characterize the magnetic environment in which the planets reside, and complement simulations of the stellar magnetosphere and radiation environment [93][90][65]. High-precision, high-resolution spectroscopy is needed to further reduce current uncertainties on the radius and mass of the star [81]. These data will also allow us to robustly measure the star's photospheric abundances, which sets a baseline for atmospheric and evolutionary modeling, as well as the composition of the system's natal planet-forming disk. The existing and acquired data will need to be matched to more advanced atmosphere, structure, and evolution models, which take into account non-equilibrium chemistry, magnetic field generation and energetics, magnetospheric structure and flare generation, star-disk-planet interactions, and angular momentum evolution across the system. Synchronizing these observations with JWST measurements will also enable us to put the later into appropriate context, as the inferred properties of the planets are intimately coupled to the current state of this persistently active star.

The combination of multi-epoch high-resolution spectroscopy, obtained for radial velocity measurements or other purposes, and long-term photometric monitoring offers a powerful approach to constraining the photospheric heterogeneity of TRAPPIST-1 and its potential impact on transmission spectra from the system. Photometric brightness variations track relative changes in the projected covering fraction of active regions but lack the necessary reference for establishing the absolute covering fractions if the star is persistently active [54]. However, stellar spectral decomposition, which identifies the unique constituents of a full-disk stellar spectrum (e.g., immaculate photosphere, spots,

and faculae) by focusing on spectral features that must originate in different temperature regions or that vary in time, provides both the unique spectral components and their projection-weighted covering fractions [116]. In the context provided by the high-resolution spectra, photometric monitoring can then be used to track absolute changes in active region coverage [117]. In the case of TRAPPIST-1, studies have suggested both two- and three-component models for the photosphere of TRAPPIST-1 ([51][118][52]. A coordinated effort between community members pursuing high-resolution spectra and photometric monitoring of TRAPPIST-1 will be useful for uniquely determining the photospheric components present on the star, tracing their evolution (if any), and identifying the photospheric heterogeneity of the star at the time of JWST transit observations and potential for stellar spectral contamination in transmission spectra.

The high sensitivity and angular resolution of JWST will be essential to push the limits for resolved companions, including potential outer giant planets that may have played in role in shaping and/or stabilizing the compact hierarchical configuration of the system.

## Modeling the JWST TRAPPIST-1 measurements

During the last decade, the exoplanet community has achieved significant progress in producing atmospheric models able to capture the expected diversity of composition, dynamical regimes and observable signatures (e.g. Fig. 4). Gathering a comprehensive suite of existing and complementary modeling tools, would insure the best possible preparation, optimisation and eventually exploitation of TRAPPIST-1 observations with JWST. 1D models - that assume an average vertical structure and composition for the whole planet - would allow us an extensive exploration of the parameter space in order to identify the most promising features to search for. These models can include detailed physics and are readily coupled to photochemical models that take into account the impact of the star's spectrum on planetary composition. They also have the versatility to explore a wide range of terrestrial atmospheric compositions that are very different to those of a modern Earth-like planet, and that could potentially reveal signs of ocean loss, interior outgazing or current habitability in the TRAPPIST-1 planetary environments [119]. 3D hydrodynamics codes (GCMs: Global Climate Models) can then refine the atmospheric structure and cloud distribution by accounting for the synchronous (or quasi-synchronous) rotation and the resulting day-night thermal contrast, which can dramatically affect observables [120][121][122][123][124][125][126][127][17][128][129][130]. The amplitude of infrared phase-curves is controlled by the day-night temperature difference at the altitude of emission [108][128]. Transit spectroscopy is also affected by the 3D structure of the atmosphere as the region around the terminator sounded by the method is usually large enough to mix information from both the day and night hemispheres [131]. Different GCMs have their own strengths and weaknesses relative to, e.g., the treatment of radiative transfer, convection, or photochemistry, the modeling of the atmosphere-ocean exchanges, the adopted spatial resolution, or the computational speed. These



differences can lead to different climate predictions and thus different estimation of the detectability and characterization of exoplanet atmospheres. Intercomparisons between the models within the community stimulate rapid progress and strengthen observation choices and interpretation of future data [132][17]. The TRAPPIST Habitable Atmosphere Intercomparison (THAI, [133]) uses TRAPPIST-1e as a benchmark to intercompare four GCMs (LMDG, ROCKE-3D, ExoCAM, UM). THAI includes four test cases: two land planets composed of a modern Earth-like composition ( $N_2$  and 400 ppm of  $CO_2$ ) and a pure  $CO_2$  atmosphere, respectively, and two aqua planets with the same two atmospheric compositions. The differences between the model outputs are compared and their impact on the simulated spectra is evaluated in the context of JWST (and future telescopes) observations (Fauchez et al. in prep). Groups working with GCMs have developed tools to generate synthetic observables accounting for the 3D atmospheric structure for all observing modes considered for TRAPPIST-1 planets (transmission - emission - at any orbital phase) and for all resolutions/bandwidths of JWST instruments. By providing synthetic observations of known virtual atmospheres, combined with JWST observation simulators, we could test and select retrieval procedures.

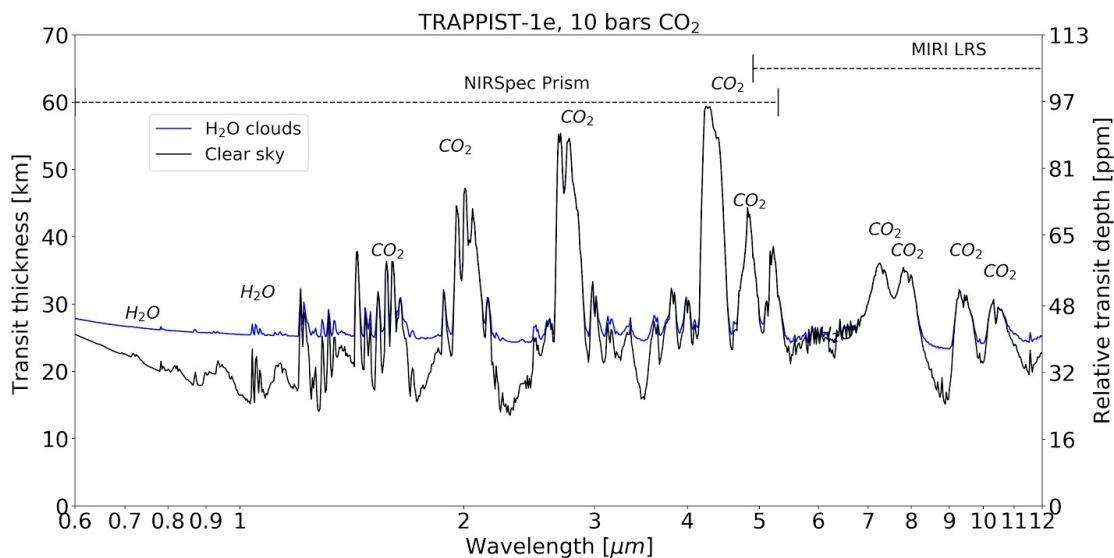


Figure 7: JWST NIRSpec Prism and MIRI transmission spectra ( $R=300$ ) simulated by the Planetary Spectrum Generator (Villanueva et al., 2018) for TRAPPIST-1e, fully covered by oceans, with 10 bars of surface pressure of  $CO_2$  (Fauchez et al., 2019a). The figure illustrates the effect of  $H_2O$  clouds, which raise the continuum level up to  $\sim 35$  kilometers above the surface, flattening the  $H_2O$  lines and reducing the relative transit depth (or atmospheric thickness) of other species.

## On the possibility to detect biosignatures on TRAPPIST-1 with JWST

JWST will allow us to explore terrestrial exoplanet atmospheres to understand their composition, and in doing so, provide the first opportunity to search for biosignature gases in a handful of terrestrial exoplanet atmospheres. The TRAPPIST-1 system may provide the best targets for this search, which will likely be challenging. Detecting biosignatures will only be feasible if care is taken to coordinate



JWST observations that maximize the chances of success over the mission duration. Numerous studies have examined the potential detectability of oxygen ( $O_2$ ) and its photochemical byproduct ozone ( $O_3$ ) for JWST observations of the TRAPPIST-1 planets (e.g. [34][38][39][17][134]). A consensus is emerging that these classic signs of oxygenic photosynthesis may require a substantial number of transits be co-added for detection ([38][39][17]). Indeed,  $O_3$  may only be weakly detected in 100 transits with MIRI LRS ([38][39]), while  $O_2$  would require >100 transits using NIRSpec to observe in the NIR. However, detection of both methane ( $CH_4$ ) and carbon dioxide ( $CO_2$ ) may indicate a biologically-driven disequilibrium characteristic of anoxic biospheres [37], that may have been present on the early Earth, prior to the rise of  $O_2$ . 10 transits of TRAPPIST-1e observed with JWST's NIRSpec Prism may be sufficient to detect  $CO_2$  and constrain the  $CH_4$  abundance sufficiently well to rule out known, nonbiological  $CH_4$  production scenarios [37]. Meadows et al. (in prep) also find that the combination of  $CH_4$  and  $CO_2$  would be detectable for TRAPPIST-1e even if it possessed a modern Earth-like atmosphere, due to the increased photochemical lifetime of  $CH_4$  expected for exoplanets in M dwarf systems (e.g. [135]). False positives for this biological  $CO_2/CH_4$  disequilibrium could come from volcanism from a more reducing mantle, but this could be made less likely via a significant non-detection of CO, which may also be possible with JWST [37]. However, the thorough survey of environmental context needed to make a definitive claim of life's impact on a planetary environment will likely not be possible with JWST, and any tantalizing discovery of possible signs of life will require more capable future missions to verify.

## The TRAPPIST-1 JWST Initiative

As described in the previous sections, an ambitious JWST program targeting TRAPPIST-1 represents a unique scientific opportunity to probe the atmospheric and surface properties of temperate Earth-sized worlds, but it will inevitably face numerous challenges both from an observational and a theoretical point of view. Considering these challenges, the limited lifetime of JWST combined to the unfavorable position of the star in the sky for the telescope, the probably large delay between the end of the JWST mission and the launch of another space-based facility of similar or superior instrumental potential, the division of this ambitious program in several sub-programs carried out by independent teams, without any global coordination, is certainly not optimal as it would inevitably result in useless competitive efforts, delays between the publications of the results of one team and the decision by another team to complement them with other observations, missed opportunities, and eventually a non-optimal scientific return. Such an ambitious study that should require several hundreds of hours on the largest-ever space-based telescope, a telescope that could be fully operational for less than 6 years, makes it necessary to adopt a community-driven approach instead of a 'competing small teams' one. It requires the support and contribution of a large interdisciplinary community gathering all the expertise and resources needed to (1) constantly optimize a well-defined sequential structure for the study, and to ensure (2) a strong coordination between all the teams involved on every aspect of its

preparation and implementation, both on the observational (e.g. study of the instrumental limitations, data analysis techniques, complementary space-based and ground-based observations) and theoretical levels (e.g. model developments and comparison, retrieval techniques, inferences).

In this context, we have set up a *TRAPPIST-1 JWST Community Initiative* open to any interested scientist. It aims to maximize the scientific return of the study of the TRAPPIST-1 system with JWST by:

- Gathering all interested scientists into a large multi-disciplinary community that will work together on a single large effort, while keeping their basic scientific freedom (to lead their own proposals, to publish their own independent papers, to collaborate with the colleagues of their choice, etc.);
- Setting-up and developing a website that will gather all relevant data and publications on the system (e.g. Spitzer photometry, high-res spectra, transit and occultation ephemerides);
- Defining and constantly optimizing a sequential structure for the study of the system with JWST, and coordinating on every aspect of its preparation and implementation, both on the observational and theoretical levels;
- Assessing the relevance and possibility of a major JWST Legacy program devoted to the study of TRAPPIST-1, and possibly implementing it.

The Initiative is supervised by a Board composed of scientists of complementary expertise that aims (1) to develop and provide the Initiative members with the required coordination mechanisms/tools, (2) to constantly evaluate the complementary nature of the different JWST proposals and their capacity to result into an optimal study of the system with JWST, (3) to review globally the progress of the Working Groups (see below), (4) to manage the promotion of the Initiative, (5) to ensure that all members abide to the Initiative's code of conduct.

To optimize its activities, the scientific activities of the Initiative will be divided in several working groups (WGs), the current ones being:

- *WG1 - Assessing GTO Observations*: the aim of this WG is to combine models from multiple groups to assess the possible scientific output of the GTO observations and the kind of complementary observations that could be proposed in Cycle 1 for planets b, d, e, f (the other planets are not part of GTOs). The science assessment will look at what models/environmental characteristics could be discriminated with the planned GTO observations and more extensive observations, including the significance of a null result.
- *WG2 - Complementary Observations*: this WG aims to organize the ground- and space-based observations that would complement and optimize the JWST ones: transit timing/TTVs, RVs, stellar variability (to help constraining the atmospheric evaporation + photospheric + chromospheric models but also the models for the stellar contamination of the transit transmission spectra of the planets). It also aims to develop an online tool providing the most up-to-date transit/occultation

ephemerides for all planets based on TTV analysis, and an online database grouping all TRAPPIST-1 data and publications that could be useful to prepare and analyze JWST observations.

- *WG3 - Planetary Environments and Evolution*: this group will work on anticipated/predicted system-wide trends in atmospheric characteristics to help justify observing the entire sequence of 7 planets, rather than just one or two. This is envisioned to be an interdisciplinary group focused on atmospheres, but taking into account the modification of atmospheres via atmospheric loss as well as replenishment by outgassing. Specific questions to be addressed include: What can geophysics tell us about the possible atmospheric compositions of the planets, considering different bulk compositions and outgassing scenarios? One of its output will be a table listing possible atmospheric scenarios for the planets and the observations required to falsify these hypotheses, eventually resulting into a global and sequential plan for the atmospheric characterization of the planets.
- *WG4 - JWST Synthetic Data Generation and Analysis*: working group interested in synthetic JWST data generation and analysis to support observation planning.

This structure is by essence flexible, and it will adapt to the evolution of the global study of TRAPPIST-1. Each WG will work by teleconferences and internet exchanges (emails, Slack, etc). In the long term, some workshops could also be organised to optimize the efficiency of the WGs.

The main tools put at the disposal of the Initiative members is a website (<https://nexss.info/community/trappist-1>) where interested scientists can sign up to join the Initiative and to choose the WG(s) to which they would like to contribute. This website will include contact information for all Initiative members, for the Board and for the WGs; an online transit/occultation ephemerids tool that will be regularly updated based on the latest TTV results; and access to an online data and publication database relative to TRAPPIST-1. In addition to the website, the Initiative will provide to its members private Slack channels where members will be able to post their proposals and publication intentions, their proposals, a draft of their publications, communicate within a WG, etc.

Any comments and suggestions on the structure and activities of the Initiative are welcome. They can be addressed to the board via the email [t1jwstci\\_board@u.washington.edu](mailto:t1jwstci_board@u.washington.edu).

## Acknowledgments

This work has made use of data from the European Space Agency (ESA) mission *Gaia* (<https://www.cosmos.esa.int/gaia>), processed by the *Gaia* Data Processing and Analysis Consortium (DPAC, <https://www.cosmos.esa.int/web/gaia/dpac/consortium>). Funding for the DPAC has been provided by national institutions, in particular the institutions participating in the *Gaia* Multilateral Agreement. This publication makes use of data products from the Two Micron All Sky Survey, which is a joint project of the University of Massachusetts and the Infrared Processing and Analysis

Center/California Institute of Technology, funded by the National Aeronautics and Space Administration and the National Science Foundation.

## Annex A: The 40pc M+L dwarfs sample

To develop our catalog of M- and L-dwarfs within 40pc, we started with the 35,781 objects in the Gaia DR2 catalog [136][42] with a trigonometric parallax  $d \geq 25$  mas. For each of them, we (1) corrected the parallax from the small systematic offset of  $-82 \mu\text{as}$  identified by [137], and added quadratically the error on this offset ( $33 \mu\text{as}$ ) to the Gaia parallax error; (2) computed the J2000 equatorial coordinates considering only the proper motion as measured by Gaia (the epoch of Gaia DR2 coordinates is J2015.5); (3) computed the absolute magnitude  $M_G$  from the apparent  $G$ -band magnitude and the distance modulus measured by Gaia; (4) computed an estimate of the effective temperature  $T_{eff}$  based on the empirical law  $T_{eff}(M_G)$  of [138] (hereafter PM2013) and assuming a systematic error of 150K added quadratically to the error propagated from the error on  $M_G$ . We then discarded all objects with  $M_G < 6.5$  or a color  $G_{BP} - G_{RP} < 1.5$  to keep only dwarf stars later than  $\sim K9$ -type. We also discarded objects missing a  $G_{BP} - G_{RP}$  color in Gaia DR2. We ended up with 21,137 potential nearby M- and L-dwarfs.

We then cross-matched each of these objects with the 2MASS point sources [43] within  $2'/d$  ( $=3''$  at 40pc). This  $1/d$  dependency of the search radius aims to take into account that, for the nearest stars, the astrometric position at a given time can differ significantly from the one computed by correcting the J2015.5 position from the proper motion because of the significant amplitude of their 3D motion, meaning that their radial velocity should also be considered. For instance, there is an astrometric difference  $> 30''$  between the J2000 position of Proxima Centauri as measured by 2MASS and the one computed from its Gaia DR2 J2015.5 coordinates and proper motion.

For each 2MASS object falling within  $2'/d$  of a selected Gaia DR2 object, we computed two estimates of  $T_{eff}$ , one based on the  $T_{eff}(G - H)$  empirical relationship of PM2013 assuming a systematic error of 150K, and one based on the  $T_{eff}(M_H)$  empirical relationship of [57] (hereafter F2015), assuming a systematic error of 100K, and with the absolute magnitude  $M_H$  computed from the apparent  $H$ -band magnitude measured by 2MASS and from the distance modulus measured by Gaia. We then computed for each Gaia - 2MASS couple the following metric:

$$\left( \frac{T_{eff}(M_G) - \langle T_{eff} \rangle}{\sigma_{T_{eff}(M_G)}} \right)^2 + \left( \frac{T_{eff}(G-H) - \langle T_{eff} \rangle}{\sigma_{T_{eff}(G-H)}} \right)^2 + \left( \frac{T_{eff}(M_H) - \langle T_{eff} \rangle}{\sigma_{T_{eff}(M_H)}} \right)^2 + \left( \frac{\delta_{position}}{\sigma_{\delta_{position}}} \right)^2$$

where  $\langle T_{eff} \rangle$  is the mean of the three temperature estimates and where

$$\delta_{position} = \arccos(\sin \delta_1 \sin \delta_2 + \cos \delta_1 \cos \delta_2 \cos(\alpha_1 - \alpha_2)),$$

$\alpha_i$  and  $\delta_i$  being the right ascension and declination of the star  $i$ , and where  $\sigma_{\delta_{position}}$  is the error on the position difference between the two objects computed from propagation of the errors on  $\alpha$  and  $\delta$  quadratically summed to an error of  $40''/d$  (one third of the search radius) to take into account the significant 3D motion of the nearest stars.

Each Gaia DR2 object was cross-matched with the 2MASS object within  $2'/d$  that minimized its metric function, i.e. with the nearest position AND the best match in terms of  $T_{eff}$  as derived from  $M_G$ ,  $M_H$  and  $G - H$ . For 3,654 objects, no cross-match was found, i.e. no 2MASS object was found within  $2'/d$ . For the remaining  $21,137 - 3,654 = 17,483$  objects, the three temperature estimates  $T_{eff}(M_G)$ ,  $T_{eff}(G - H)$ , and  $T_{eff}(M_H)$  were compared between each other. In case of discrepancy at more than  $2\sigma$ , the object was discarded. 2,901 objects were rejected through this temperatures comparison, leaving 14,582 objects.

For these objects, we (1) derived an estimate of the spectral type  $SpT$  by inverting the empirical relationship  $T_{eff}(M_H)$  of F2015, assuming an internal error of 113K for it; (2) computed an estimate of the  $I_c$ -band magnitude from the 2MASS  $J$ -band magnitude and the spectral type estimate using online tables with empirical colors as a function of spectral type<sup>1</sup>; (3) computed the photometric precision that should be achieved by TESS within 30min basing on the apparent  $I_c$  magnitude<sup>2</sup>; (4) used our Exposure Time Calculator of SPECULOOS to compute the typical photometric precision that should be achieved by a SPECULOOS telescope as a function of the apparent  $J$ -band magnitude and the spectral type; (5) computed a  $J$ -band bolometric correction  $BC_J$ . For  $SpT$  later than M6.6, we used the  $BC_J(SpT)$  relationship of F2015 (assumed internal error = 0.163), and for earlier stars we used the  $BC_J(T_{eff})$  relationship of PM2013 assuming an internal error of 0.2; (6) computed an estimate of the bolometric luminosity  $L_{bol}$  (+ error) from  $M_J$  and  $BC_J$ ; (7) computed an estimate of the radius  $R_*$  (+ error) from  $L_{bol}$ ,  $T_{eff}$ , and the relationship  $L_{bol} = 4\pi R_*^2 T_{eff}^4$ ; (7) derived an estimate of the mass  $M_*$  (+ error) from the empirical relationship of [81] (assumed internal error = 0.03%) for objects earlier than L2.5, assuming them to be low-mass stars [139]. For later objects (i.e. brown dwarfs), we assumed the following relationship to derive a crude estimate of the mass:

$M_* = 0.075 - (SpT - 12) * 0.0005 M_\odot$ , with an assumed error of 20%. As the spectral type of a brown dwarf is not only correlated with its mass but also its age, this relationship has no ambition to be accurate at all. It just aims to represent that, statistically speaking, a hotter brown dwarf tends to be more massive than a colder one.

At that stage, we rejected another batch of 478 objects for which at least one of the following conditions was met:

- The computed radius was smaller than  $0.07 R_{\odot}$ , i.e. too small for an ultracool dwarf [139].
- The number of 2MASS objects within  $2''$  was over 250 and the  $K$  magnitude larger than 12.5, making likely a confusion case (galactic disk + bulge).
- The inferred spectral type was later than M5.5 [L0],  $K$  was larger than 8 (so no saturation in 2MASS images), and still the  $J - K$  color was smaller than 0.6 [1.0], suggesting a wrong cross-match or a confusion case.
- The inferred mass was smaller than  $0.2 M_{\odot}$  while the inferred radius was larger than  $0.4 R_{\odot}$ , i.e. too large for a low-mass M-dwarf.

We ended up eventually with a 40pc M+L dwarfs catalog containing 14,104 objects. Still, we noticed that some well-known nearby late-M and L-dwarfs were missing from the catalog because they had no parallax in Gaia DR2, including very nearby objects like Scholtz star (M9.5+T5.5 at 6.7pc, [140]), Luhman-16 (L7.5+T0.5 at 2.0pc, [141]), or Wolf 359 (M6.0 at 2.4pc, [142]). We thus cross-matched our catalog with the spectroscopically verified sample of M6-L5 ultracool dwarfs (UCDs) within 25 pc published recently by [143]. For each object within this sample and not present in our catalog, we (1) used the  $T_{eff}(SpT)$  empirical relationship of F2015 to estimate the effective temperature; (2) used the same procedure than for the Gaia DR2 objects to estimate the bolometric correction, the luminosity, the radius, the mass, and the SPECULOOS and TESS photometric precisions. We discarded objects flagged as close binary in the catalog of [143], objects with an inferred size smaller than  $0.07 R_{\odot}$ , objects with an inferred mass greater than  $0.125 M_{\odot}$  (too massive for an ultracool dwarf, suggesting a blend or a close binary case), and objects later than M9.0 with a  $J - K$  color index smaller than 1.0 and a  $K$  magnitude larger than 8. At the end, this procedure added 59 objects to our catalog, for a total of 14,163. As our initial goal was to build the target list of SPECULOOS that is, we did not try to recover stars earlier than M6 absent from our catalog because they do not have a Gaia DR2 parallax. Extrapolating our results for ultracool dwarfs to earlier M-dwarfs, we estimate that there must be at most a few hundreds of them in the case.

Figure 8 shows the spectral type distribution and the mass-radius diagram of the 14,163 objects. One can notice that our catalog of nearby M-dwarfs is dominated by  $\sim$ M4-type objects, in agreement with earlier results (e.g. [144]).

We then computed a metric for each target of our catalog to quantify its value as target of an ambitious 200hr JWST/NIRSPEC program aiming to study the atmospheric composition of a putative transiting ‘Earth-like’ (same mass, same size, same atmospheric composition with a mean molecular mass of 29amu, same irradiation from the host star, same Bond albedo of 0.3) planet. For the typical amplitude of the transmission signals, we used the following formula [2]:



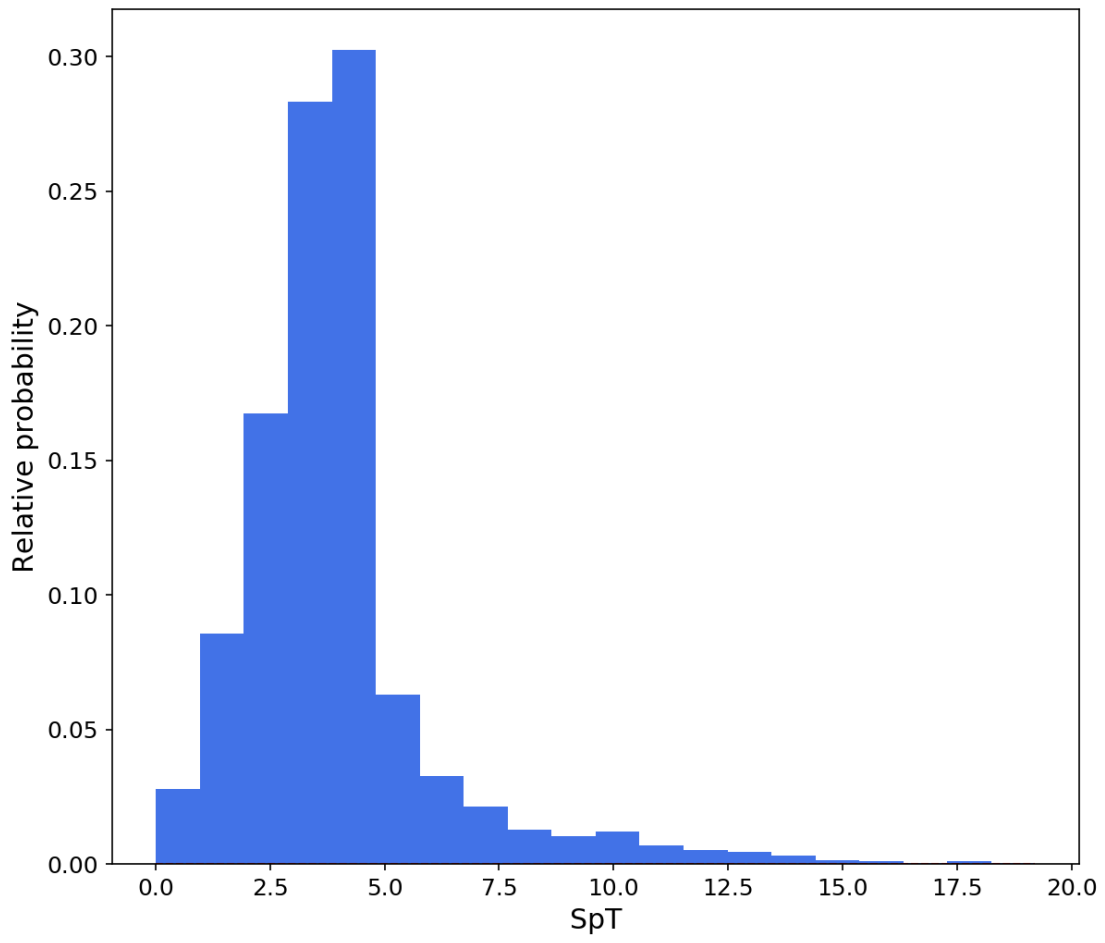
$$\Delta\delta = 2N_H\delta\left(\frac{H}{R_\oplus}\right)$$

where  $H$  is the atmospheric scale height assuming an isothermal atmosphere of temperature equal to the equilibrium temperature of the planet,  $\delta$  is the transit depth, and  $R_\oplus$  is the planet's radius. We assumed a value of 5 for  $N_H$ , the number of scale heights corresponding to a strong molecular transition. For the assumed planets, the orbital distance corresponding to an Earth-like irradiation was computed basing on the stellar luminosity, the corresponding orbital period was computed using Kepler's third law combined to the stellar mass estimate, and the duration of a central transit was computed using Formula 15 from [2]. We then computed the JWST/NIRSPEC (Prism mode) noise at  $2.2\ \mu\text{m}$  for a spectral bin of 100nm and for an exposure sequence with the same duration than the transit using the online tool PandExo [145]. We assumed a floor noise per transit of 30ppm that we added quadratically to the white noise estimate of PandExo. We computed the number of transits observed within the 200hr JWST program, assuming for each transit observation a duration equal to the transit duration plus 2.5hr (for pointing, acquisition, plus out-of-transit observation). The noise per transit was then divided by the square root of the number of observed transits, and we added quadratically to the result an absolute floor noise of 10ppm. At the end, we obtained for each target a transmission signal-to-noise (SNR) by dividing the transmission amplitude by the global noise. Figure 2 (top) shows the resulting  $SpT - SNR$  distribution. In this Figure, we draw a line at  $SNR = 5$ , assuming this value to be an absolute minimum for deriving meaningful constraints on the atmospheric composition of our assumed Earth-like planets. TRAPPIST-1 is shown as a red star symbol in the Figure. There are 101 objects -including TRAPPIST-1- that have a  $SNR \geq 5$ , and only 44 that have a SNR larger than TRAPPIST-1.

We performed the same exercise for occultation spectrophotometry with JWST/MIRI (imaging mode) in the F1000W filter ( $\lambda = 10\ \mu\text{m}$ ,  $\Delta\lambda = 2\ \mu\text{m}$ ), assuming a 25hr program aiming to detect the thermal emission of an atmosphere-less Earth-sized planet with an irradiation four times larger than Earth, as TRAPPIST-1b. Black body spectra were assumed for the star (with the  $T_{eff}$  estimated the spectral type, as describe above) and planet (with  $T_{eff} = 490\text{K}$  = equilibrium temperature for  $A_B = 0.1$  and an inefficient heat distribution from the day- to the night-side). We derived a  $K - W3$  (SpT) relationship from the data of [146] and literature  $K$ - and  $W3$ -magnitude measurements for nearby M- and L-dwarfs. We used the online JWST Exposure Time Calculator<sup>3</sup> to estimate the photometric precision of MIRI to be  $\sim 100\text{ppm}$  for TRAPPIST-1 ( $W3 = 9.6$ ) in the F1000W filter for an exposure time of 30min, and rescaled this error for each target based on its  $W3$ -magnitude and the duration of a central occultation. Here too, we assumed floor noises of 30ppm per transit and 10ppm for the whole program. 286 objects have a  $SNR \geq 5$ . We obtained a  $SNR \sim 6.6$  for TRAPPIST-1, and larger values for 131 objects of our 40pc M+L dwarfs catalog, most of them being of later-type (Figure 2, bottom).



For each target, we then assumed two 27d-long photometric monitoring by TESS, and we computed the SNR for the detection of Earth-sized planets with irradiations of one and four times the Earth's, considering our computed TESS photometric precision estimate for the star combined to the mean number of observed transits, and their depths and durations (assuming a central transit). A floor noise of 50ppm was assumed per transit, and none for the phase-folded photometry. If the computed SNR was  $\geq 8$ , a detection within the reach of TESS was inferred. We applied the same procedure for SPECULOOS, considering only targets with spectral type later than M5.5, assuming this time a 100hr-long photometric monitoring and a floor noise of 500ppm per transit, a realistic value for high-precision ground-based photometry from a good astronomical site and a state-of-the-art equipment. Here too, a detection was deemed possible when the computed SNR was  $\geq 8$ . Figure 9 summarizes our results. It is similar to Fig. 2 except that potential 'Earth-like' planets whose detection is within reach of TESS and SPECULOOS are overplotted. Among the 101 targets that are well-suited for transmission spectroscopy of an 'Earth-like' planet, TESS and SPECULOOS are able to detect the planet for 43 and 96 objects, respectively. This larger potential of SPECULOOS is due to the fact that transmission spectroscopy of potentially habitable Earth-sized planets is possible with JWST only for stars that are both very nearby ( $< \sim 15$  pc) and very small ( $< \sim 0.15 R_{\odot}$ ), as TESS detection potential falls down at spectral type  $\sim M5$  [147] unlike the one of SPECULOOS that was specifically designed to detect Earth-sized planets transiting ultracool dwarf stars [26][21][22][20].



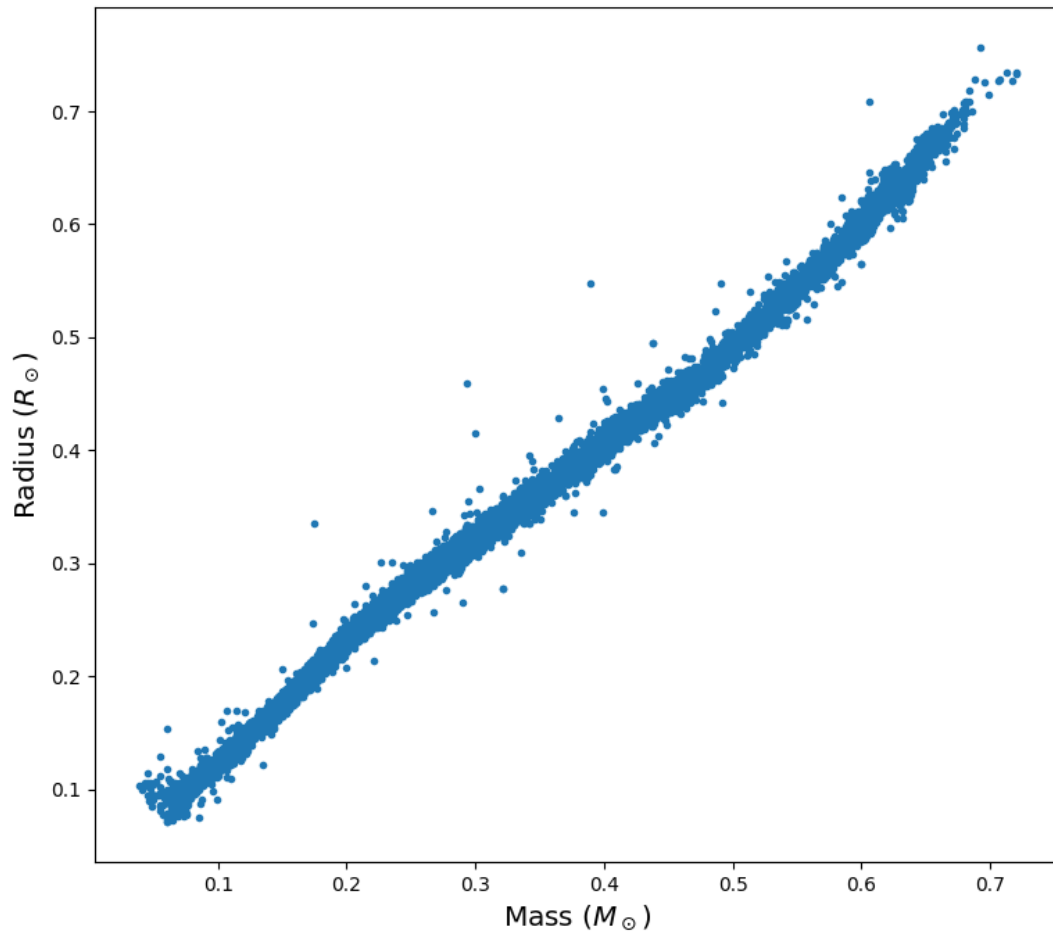
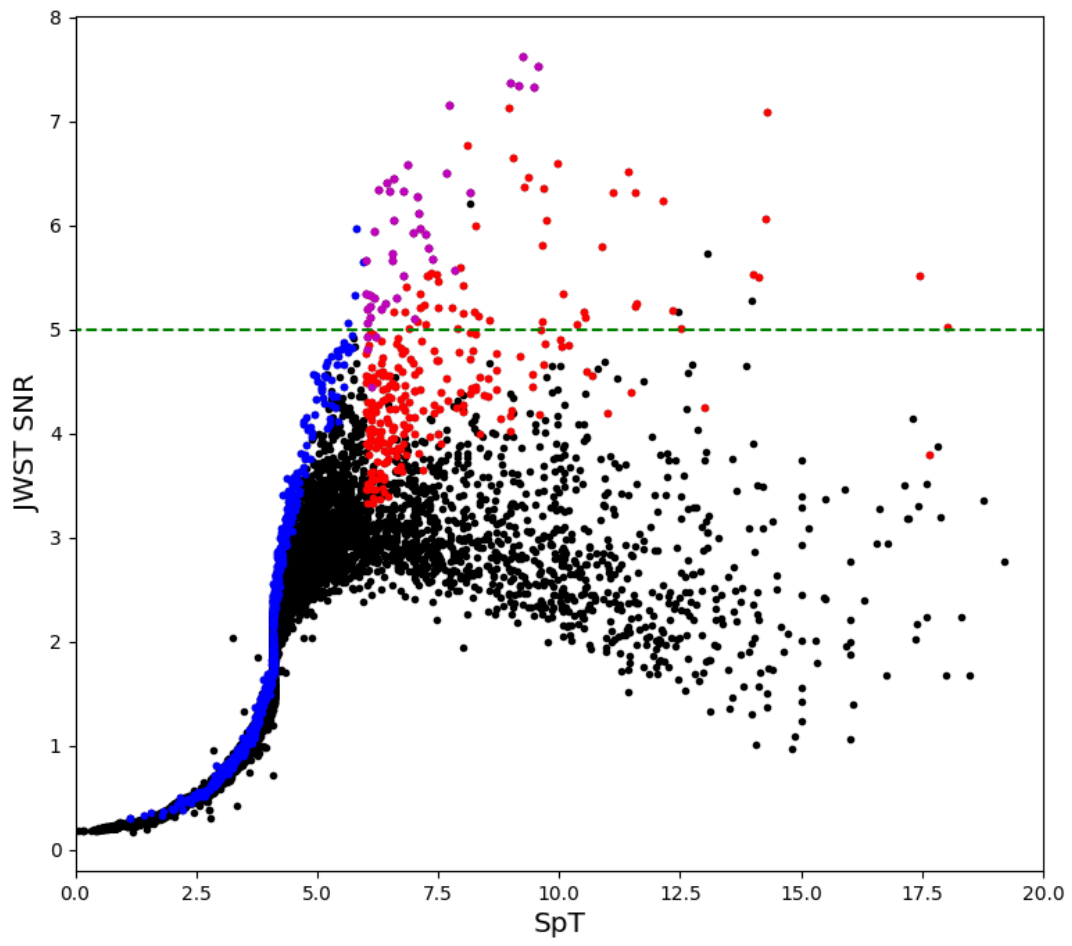


Figure 8: Spectral type distribution (top) and mass-radius diagram (bottom) for our 40pc ML-dwarfs catalog.



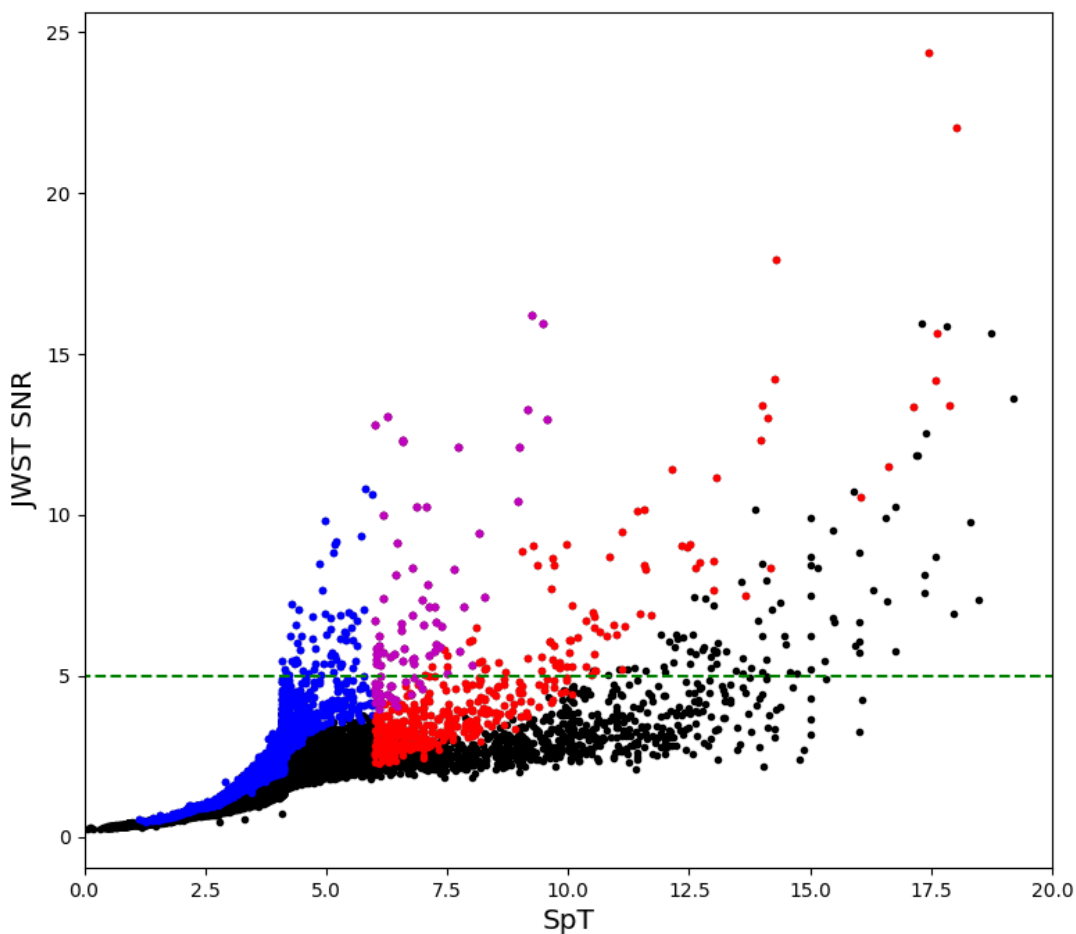


Figure 9: Same as Fig. 2 but with targets for which a transit detection would be within reach of TESS, SPECULOOS, or both are overplotted as blue, red, and magenta symbols, respectively.

## Footnotes

1. <http://www.stsci.edu/inr/intrins.html> [↵](#)
2. <https://tasoc.dk/docs/releasenotes/tesssectordrn05v03.pdf> [↵](#)
3. <https://jwst.etc.stsci.edu> [↵](#)

## Citations

1. Mayor, M., & Queloz, D. (1995). A Jupiter-mass companion to a solar-type star. *Nature*, 378(6555), 355–359. <https://doi.org/10.1038/378355a0> [↵](#)

2. Winn, J. N. (2010). Exoplanet Transits and Occultations. In S. Seager (Ed.), *Exoplanets, edited by s. Seager. Published by university of arizona press, tucson, az, 2010, 526 pp. ISBN 978-0-8165-2945-2., p.55-77* (pp. 55–77). [↵](#)
3. Charbonneau, D. (2009). The Rise of the Vulcans. In F. Pont, D. Sasselov, & M. J. Holman (Eds.), *Transiting planets* (Vol. 253, pp. 1–8). <https://doi.org/10.1017/S1743921308026161> [↵](#)
4. Sing, D. K., Fortney, J. J., Nikolov, N., Wakeford, H. R., Kataria, T., Evans, T. M., ... Wilson, P. A. (2016). A continuum from clear to cloudy hot-Jupiter exoplanets without primordial water depletion. *Nature*, 529(7584), 59–62. <https://doi.org/10.1038/nature16068> [↵](#)
5. Deming, D., Harrington, J., Laughlin, G., Seager, S., Navarro, S. B., Bowman, W. C., & Horning, K. (2007). Spitzer Transit and Secondary Eclipse Photometry of GJ 436b. *The Astrophysical Journal Letters*, 667(2), L199–L202. <https://doi.org/10.1086/522496> [↵](#)
6. Wakeford, H. R., Sing, D. K., Kataria, T., Deming, D., Nikolov, N., Lopez, E. D., ... Evans, T. M. (2017). HAT-P-26b: A Neptune-mass exoplanet with a well-constrained heavy element abundance. *Science*, 356(6338), 628–631. <https://doi.org/10.1126/science.aah4668> [↵](#)
7. Madhusudhan, N. (2019). Exoplanetary Atmospheres: Key Insights, Challenges, and Prospects. *Annual Review of Astronomy and Astrophysics*, 57, 617–663. <https://doi.org/10.1146/annurev-astro-081817-051846> [↵](#)
8. Demory, B.-O., Gillon, M., Seager, S., Benneke, B., Deming, D., & Jackson, B. (2012). Detection of Thermal Emission from a Super-Earth. *The Astrophysical Journal Letters*, 751(2), L28. <https://doi.org/10.1088/2041-8205/751/2/L28> [↵](#)
9. Demory, B.-O., Gillon, M., Madhusudhan, N., & Queloz, D. (2016). Variability in the super-Earth 55 Cnc e. *Monthly Notices of the Royal Astronomical Society*, 455(2), 2018–2027. <https://doi.org/10.1093/mnras/stv2239> [↵](#)
10. Kreidberg, L., Koll, D. D. B., Morley, C., Hu, R., Schaefer, L., Deming, D., ... Vandersek, R. (2019). Absence of a thick atmosphere on the terrestrial exoplanet LHS 3844b. *Nature*, 573(7772), 87–90. <https://doi.org/10.1038/s41586-019-1497-4> [↵](#)
11. Kreidberg, L., Bean, J. L., Désert, J.-M., Benneke, B., Deming, D., Stevenson, K. B., ... Homeier, D. (2014). Clouds in the atmosphere of the super-Earth exoplanet GJ1214b. *Nature*, 505(7481), 69–72. <https://doi.org/10.1038/nature12888> [↵](#)
12. Benneke, B., Wong, I., Piaulet, C., Knutson, H. A., Lothringer, J., Morley, C. V., ... Fraine, J. (2019). Water Vapor and Clouds on the Habitable-zone Sub-Neptune Exoplanet K2-18b. *The Astrophysical*

- Journal Letters*, 887(1), L14. <https://doi.org/10.3847/2041-8213/ab59dc>
13. Kasting, J. F., Whitmire, D. P., & Reynolds, R. T. (1993). Habitable Zones around Main Sequence Stars. *Icarus*, 101(1), 108–128. <https://doi.org/10.1006/icar.1993.1010>
14. Schwieterman, E. W., Kiang, N. Y., Parenteau, M. N., Harman, C. E., DasSarma, S., Fisher, T. M., ... Lyons, T. W. (2018). Exoplanet Biosignatures: A Review of Remotely Detectable Signs of Life. *Astrobiology*, 18(6), 663–708. <https://doi.org/10.1089/ast.2017.1729>
15. Kaltenegger, L., & Traub, W. A. (2009). Transits of Earth-like Planets. *The Astrophysical Journal*, 698(1), 519–527. <https://doi.org/10.1088/0004-637X/698/1/519>
16. de Wit, J., & Seager, S. (2013). Constraining Exoplanet Mass from Transmission Spectroscopy. *Science*, 342(6165), 1473–1477. <https://doi.org/10.1126/science.1245450>
17. Fauchez, T. J., Turbet, M., Villanueva, G. L., Wolf, E. T., Arney, G., Kopparapu, R. K., ... Stevenson, K. B. (2019). Impact of Clouds and Hazes on the Simulated JWST Transmission Spectra of Habitable Zone Planets in the TRAPPIST-1 System. *The Astrophysical Journal*, 887(2), 194. <https://doi.org/10.3847/1538-4357/ab5862>
18. Nutzman, P., & Charbonneau, D. (2008). Design Considerations for a Ground-Based Transit Search for Habitable Planets Orbiting M Dwarfs. *Publications of the Astronomical Society of the Pacific*, 120(865), 317. <https://doi.org/10.1086/533420>
19. [↵](#)
20. Gillon, M. (2018). Searching for red worlds. *Nature Astronomy*, 2, 344–344. <https://doi.org/10.1038/s41550-018-0443-y>
21. Burdanov, A., Delrez, L., Gillon, M., & Jehin, E. (2018). SPECULOOS Exoplanet Search and Its Prototype on TRAPPIST. In *Handbook of exoplanets, isbn 978-3-319-55332-0. Springer international publishing ag, part of springer nature, 2018, id.130* (p. 130). [https://doi.org/10.1007/978-3-319-55333-7\\_130](https://doi.org/10.1007/978-3-319-55333-7_130)
22. Delrez, L., Gillon, Michaël., Queloz, D., Demory, B.-O., Almleaky, Y., de Wit, J., ... Rebolo, R. (2018). SPECULOOS: a network of robotic telescopes to hunt for terrestrial planets around the nearest ultracool dwarfs. In *Proceedings of the spie* (Vol. 10700, p. 107001I). <https://doi.org/10.1117/12.2312475>
23. Raymond, S. N., Scalo, J., & Meadows, V. S. (2007). A Decreased Probability of Habitable Planet Formation around Low-Mass Stars. *The Astrophysical Journal*, 669(1), 606–614.



<https://doi.org/10.1086/521587> [↵](#)

24. Jehin, E., Gillon, M., Queloz, D., Delrez, L., Burdanov, A., Murray, C., ... Grootel, V. V. (2018). The SPECULOOS Southern Observatory Begins its Hunt for Rocky Planets. *The Messenger*, 174, 2–7.

<https://doi.org/10.18727/0722-6691/5105> [↵](#)

25. Ducrot, E., & Gillon, M. (2019). Latest news of SPECULOOS and TRAPPIST-1. In *EPSC-dps joint meeting 2019* (Vol. 2019, p. EPSC-DPS2019-1974). [↵](#)

26. Gillon, M., Jehin, E., Fumel, A., Magain, P., & Queloz, D. (2013). TRAPPIST-UCDTS: A prototype search for habitable planets transiting ultra-cool stars. In *European physical journal web of conferences* (Vol. 47, p. 03001). <https://doi.org/10.1051/epjconf/20134703001> [↵](#)

27. Gillon, M., Jehin, E., Lederer, S. M., Delrez, L., de Wit, J., Burdanov, A., ... Queloz, D. (2016). Temperate Earth-sized planets transiting a nearby ultracool dwarf star. *Nature*, 533(7602), 221–224.

<https://doi.org/10.1038/nature17448> [↵](#)

28. Gillon, M., Triaud, A. H. M. J., Demory, B.-O., Jehin, E., Agol, E., Deck, K. M., ... Queloz, D. (2017). Seven temperate terrestrial planets around the nearby ultracool dwarf star TRAPPIST-1. *Nature*, 542(7642), 456–460. <https://doi.org/10.1038/nature21360> [↵](#)

29. Luger, R., Sestovic, M., Kruse, E., Grimm, S. L., Demory, B.-O., Agol, E., ... Queloz, D. (2017). A seven-planet resonant chain in TRAPPIST-1. *Nature Astronomy*, 1(6). <https://doi.org/10.1038/s41550-017-0129> [↵](#)

30. Delrez, L., Gillon, M., Triaud, A. H. M. J., Demory, B.-O., Wit, de J., Ingalls, J. G., ... Grootel, V. V. (2018). Early 2017 observations of TRAPPIST-1 with spitzer. *Monthly Notices of the Royal Astronomical Society*, 475(3), 3577–3597. <https://doi.org/10.1093/mnras/sty051> [↵](#)

31. Agol, E., Steffen, J., Sari, R., & Clarkson, W. (2005). On detecting terrestrial planets with timing of giant planet transits. *Monthly Notices of the Royal Astronomical Society*, 359(2), 567–579.

<https://doi.org/10.1111/j.1365-2966.2005.08922.x> [↵](#)

32. Holman, M. J., & Murray, N. W. (2005). The Use of Transit Timing to Detect Terrestrial-Mass Extrasolar Planets. *Science*, 307(5713), 1288–1291. <https://doi.org/10.1126/science.1107822> [↵](#)

33. Grimm, S. L., Demory, B.-O., Gillon, M., Dorn, C., Agol, E., Burdanov, A., ... Queloz, D. (2018). The nature of the TRAPPIST-1 exoplanets. *Astronomy & Astrophysics*, 613, A68.

<https://doi.org/10.1051/0004-6361/201732233> [↵](#)

34. Barstow, J. K., & Irwin, P. G. J. (2016). Habitable worlds with JWST: transit spectroscopy of the TRAPPIST-1 system? *Monthly Notices of the Royal Astronomical Society*, 461(1), L92–L96. <https://doi.org/10.1093/mnrasl/slwl109> [↵](#)
35. Morley, C. V., Kreidberg, L., Rustamkulov, Z., Robinson, T., & Fortney, J. J. (2017). Observing the Atmospheres of Known Temperate Earth-sized Planets with JWST. *The Astrophysical Journal*, 850(2), 121. <https://doi.org/10.3847/1538-4357/aa927b> [↵](#)
36. Batalha, N. E., Lewis, N. K., Line, M. R., Valenti, J., & Stevenson, K. (2018). Strategies for Constraining the Atmospheres of Temperate Terrestrial Planets with JWST. *The Astrophysical Journal Letters*, 856(2), L34. <https://doi.org/10.3847/2041-8213/aab896> [↵](#)
37. Krissansen-Totton, J., Garland, R., Irwin, P., & Catling, D. C. (2018). Detectability of Biosignatures in Anoxic Atmospheres with the James Webb Space Telescope: A TRAPPIST-1e Case Study. *The Astronomical Journal*, 156(3), 114. <https://doi.org/10.3847/1538-3881/aad564> [↵](#)
38. Wunderlich, F., Godolt, M., Grenfell, J. L., Städt, S., Smith, A. M. S., Gebauer, S., ... Rauer, H. (2019). Detectability of atmospheric features of Earth-like planets in the habitable zone around M dwarfs. *Astronomy and Astrophysics*, 624, A49. <https://doi.org/10.1051/0004-6361/201834504> [↵](#)
39. Lustig-Yaeger, J., Meadows, V. S., & Lincowski, A. P. (2019). The Detectability and Characterization of the TRAPPIST-1 Exoplanet Atmospheres with JWST. *The Astronomical Journal*, 158(1), 27. <https://doi.org/10.3847/1538-3881/ab21e0> [↵](#)
40. Ricker, G. R., Winn, J. N., Vanderspek, R., Latham, D. W., Bakos, G. Á., Bean, J. L., ... Villaseñor, J. (2015). Transiting Exoplanet Survey Satellite (TESS). *Journal of Astronomical Telescopes, Instruments, and Systems*, 1, 014003. <https://doi.org/10.1117/1.JATIS.1.1.014003> [↵](#)
41. Fauchez, T. J., Villanueva, G. L., Schwieterman, E. W., Turbet, M., Arney, G., Pidhorodetska, D., ... Domagal-Goldman, S. D. (2020). Sensitive probing of exoplanetary oxygen via mid-infrared collisional absorption. *Nature Astronomy*, 5. <https://doi.org/10.1038/s41550-019-0977-7> [↵](#)
42. Collaboration, G., Brown, A. G. A., Vallenari, A., Prusti, T., de Bruijne, J. H. J., Babusiaux, C., ... Zwitter, T. (2018). Gaia Data Release 2. Summary of the contents and survey properties. *Astronomy and Astrophysics*, 616, A1. <https://doi.org/10.1051/0004-6361/201833051> [↵](#)
43. Skrutskie, M. F., Cutri, R. M., Stiening, R., Weinberg, M. D., Schneider, S., Carpenter, J. M., ... Wheelock, S. (2006). The Two Micron All Sky Survey (2MASS). *The Astronomical Journal*, 131(2), 1163–1183. <https://doi.org/10.1086/498708> [↵](#)

44. Metchev, S., Miles-Páez, P., Palle, E., Zapatero Osorio, M. R., Tannock, M., Apai, D., ... Triaud, A. (2019). A Spitzer search for transiting exoplanets around ultra-cool dwarf stars viewed equator-on. In *AAS/division for extreme solar systems abstracts* (Vol. 51, p. 302.13). [↵](#)
45. Winn, J. N., & Fabrycky, D. C. (2015). The Occurrence and Architecture of Exoplanetary Systems. *Annual Review of Astronomy and Astrophysics*, 53, 409–447. <https://doi.org/10.1146/annurev-astro-082214-122246> [↵](#)
46. Klein, B., & Donati, J.-F. (2019). Simulating radial velocity observations of trappist-1 with SPIRou. *Monthly Notices of the Royal Astronomical Society*, 488(4), 5114–5126. <https://doi.org/10.1093/mnras/stz1953> [↵](#)
47. Wildi, F., Blind, N., Reshetov, V., Hernandez, O., Genolet, L., Conod, U., ... Saddlemyer, L. (2017). NIRPS: an adaptive-optics assisted radial velocity spectrograph to chase exoplanets around M-stars. In *Proceedings of the spie* (Vol. 10400, p. 1040018). <https://doi.org/10.1117/12.2275660> [↵](#)
48. Airapetian, V. S., Barnes, R., Cohen, O., Collinson, G. A., Danchi, W. C., Dong, C. F., ... Yamashiki, Y. (2019). Impact of Space Weather on Climate and Habitability of Terrestrial Type Exoplanets. *ArXiv E-Prints*, arXiv:1905.05093. Retrieved from <http://arxiv.org/abs/1905.05093> [↵](#)
49. Burgasser, A. J., & Mamajek, E. E. (2017). On the Age of the TRAPPIST-1 System. *The Astrophysical Journal*, 845(2), 110. <https://doi.org/10.3847/1538-4357/aa7fea> [↵](#)
50. Ducrot, E., Sestovic, M., Morris, B. M., Gillon, M., Triaud, A. H. M. J., Wit, J. D., ... Grootel, V. V. (2018). The 0.84.5 micron broadband transmission spectra of TRAPPIST-1 planets. *The Astronomical Journal*, 156(5), 218. <https://doi.org/10.3847/1538-3881/aade94> [↵](#)
51. Morris, B. M., Agol, E., Hebb, L., Hawley, S. L., Gillon, M., Ducrot, E., ... Demory, B.-O. (2018). Non-detection of contamination by stellar activity in the spitzer transit light curves of TRAPPIST-1. *The Astrophysical Journal*, 863(2), L32. <https://doi.org/10.3847/2041-8213/aad8aa> [↵](#)
52. Wakeford, H. R., Lewis, N. K., Fowler, J., Bruno, G., Wilson, T. J., Moran, S. E., ... de Wit, J. (2019). Disentangling the Planet from the Star in Late-Type M Dwarfs: A Case Study of TRAPPIST-1g. *The Astronomical Journal*, 157(1), 11. <https://doi.org/10.3847/1538-3881/aaf04d> [↵](#)
53. Espinoza, N., Rackham, B. V., Jordán, A., Apai, D., López-Morales, M., Osip, D. J., ... Fraine, J. (2019). ACCESS: a featureless optical transmission spectrum for WASP-19b from Magellan/IMACS. *Monthly Notices of the Royal Astronomical Society*, 482(2), 2065–2087. <https://doi.org/10.1093/mnras/sty2691> [↵](#)

54. Rackham, B. V., Apai, D., & Giampapa, M. S. (2018). The Transit Light Source Effect: False Spectral Features and Incorrect Densities for M-dwarf Transiting Planets. *The Astrophysical Journal*, 853(2), 122. <https://doi.org/10.3847/1538-4357/aaa08c> [↵](#)
55. Gonzales, E. C., Faherty, J. K., Gagné, J., Teske, J., McWilliam, A., & Cruz, K. (2019). A Reanalysis of the Fundamental Parameters and Age of TRAPPIST-1. *The Astrophysical Journal*, 886(2), 131. <https://doi.org/10.3847/1538-4357/ab48fc> [↵](#)
56. Van Grootel, V., Fernandes, C. S., Gillon, M., Jehin, E., Manfroid, J., Scudlaire, R., ... Triaud, A. H. M. J. (2018). Stellar Parameters for Trappist-1. *The Astrophysical Journal*, 853, 30. <https://doi.org/10.3847/1538-4357/aaa023> [↵](#)
57. Filippazzo, J. C., Rice, E. L., Faherty, J., Cruz, K. L., Van Gordon, M. M., &Looper, D. L. (2015). Fundamental Parameters and Spectral Energy Distributions of Young and Field Age Objects with Masses Spanning the Stellar to Planetary Regime. *The Astrophysical Journal*, 810(2), 158. <https://doi.org/10.1088/0004-637X/810/2/158> [↵](#)
58. Howell, S. B., Everett, M. E., Horch, E. P., Winters, J. G., Hirsch, L., Nusdeo, D., & Scott, N. J. (2016). Speckle Imaging Excludes Low-mass Companions Orbiting the Exoplanet Host Star TRAPPIST-1. *The Astrophysical Journal Letters*, 829(1), L2. <https://doi.org/10.3847/2041-8205/829/1/L2> [↵](#)
59. Paudel, R. R., Gizis, J. E., Mullan, D. J., Schmidt, S. J., Burgasser, A. J., Williams, P. K. G., & Berger, E. (2018). K2 Ultracool Dwarfs Survey. III. White Light Flares Are Ubiquitous in M6-L0 Dwarfs. *The Astrophysical Journal*, 858(1), 55. <https://doi.org/10.3847/1538-4357/aab8fe> [↵](#)
60. Reiners, A., & Basri, G. (2010). A Volume-Limited Sample of 63 M7-M9.5 Dwarfs. II. Activity, Magnetism, and the Fade of the Rotation-Dominated Dynamo. *The Astrophysical Journal*, 710(2), 924–935. <https://doi.org/10.1088/0004-637X/710/2/924> [↵](#)
61. Burgasser, A. J., Logsdon, S. E., Gagné, J., Bochanski, J. J., Faherty, J. K., West, A. A., ... Cruz, K. L. (2015). The Brown Dwarf Kinematics Project (BDKP). IV. Radial Velocities of 85 Late-M and L Dwarfs with MagE. *The Astrophysical Journal Supplement Series*, 220, 18. <https://doi.org/10.1088/0067-0049/220/1/18> [↵](#)
62. Wheatley, P. J., Louden, T., Bourrier, V., Ehrenreich, D., & Gillon, M. (2017). Strong XUV irradiation of the Earth-sized exoplanets orbiting the ultracool dwarf TRAPPIST-1. *Monthly Notices of the Royal Astronomical Society*, 465(1), L74–L78. <https://doi.org/10.1093/mnrasl/slw192> [↵](#)
63. Mullan, D. J., MacDonald, J., Dieterich, S., & Faussey, H. (2018). Magnetic Fields on the Flare Star Trappist-1: Consequences for Radius Inflation and Planetary Habitability. *The Astrophysical Journal*, 869, 149. <https://doi.org/10.3847/1538-4357/aaee7c> [↵](#)

64. Vida, K., Kóvári, Zs., Pál, A., Oláh, K., & Kriskovics, L. (2017). Frequent Flaring in the TRAPPIST-1 System Unsuitable for Life? *The Astrophysical Journal*, 841(2), 124. <https://doi.org/10.3847/1538-4357/aa6f05> [↵](#)
65. Garraffo, C., Drake, J. J., Cohen, O., Alvarado-Gómez, J. D., & Moschou, S. P. (2017). The Threatening Magnetic and Plasma Environment of the TRAPPIST-1 Planets. *The Astrophysical Journal*, 843(2), L33. <https://doi.org/10.3847/2041-8213/aa79ed> [↵](#)
66. Reiners, A., & Basri, G. (2007). The First Direct Measurements of Surface Magnetic Fields on Very Low Mass Stars. *The Astrophysical Journal*, 656, 1121–1135. <https://doi.org/10.1086/510304> [↵](#)
67. Luger, R., Sestovic, M., Kruse, E., Grimm, S. L., Demory, B.-O., Agol, E., ... Queloz, D. (2017). A seven-planet resonant chain in TRAPPIST-1. *Nature Astronomy*, 1, 0129. <https://doi.org/10.1038/s41550-017-0129> [↵](#)
68. Morris, B. M., Agol, E., Hebb, L., Hawley, S. L., Gillon, M., Ducrot, E., ... Demory, B.-O. (2018). Non-detection of Contamination by Stellar Activity in the Spitzer Transit Light Curves of TRAPPIST-1. *The Astrophysical Journal Letters*, 863(2), L32. <https://doi.org/10.3847/2041-8213/aad8aa> [↵](#)
69. Luger, R., Lustig-Yaeger, J., & Agol, E. (2017). Planet-Planet occultations in TRAPPIST-1 and other exoplanet systems. *The Astrophysical Journal*, 851(2), 94. <https://doi.org/10.3847/1538-4357/aa9c43> [↵](#)
70. MacDonald, M. G., Ragozzine, D., Fabrycky, D. C., Ford, E. B., Holman, M. J., Isaacson, H. T., ... Torres, G. (2016). A DYNAMICAL ANALYSIS OF THE KEPLER-80 SYSTEM OF FIVE TRANSITING PLANETS. *The Astronomical Journal*, 152(4), 105. <https://doi.org/10.3847/0004-6256/152/4/105> [↵](#)
71. Papaloizou, J. C. B., Szuszkiewicz, E., & Terquem, C. (2017). The TRAPPIST-1 system: Orbital evolution, tidal dissipation, formation and habitability. *Monthly Notices of the Royal Astronomical Society*, 476(4), 5032–5056. <https://doi.org/10.1093/mnras/stx2980> [↵](#)
72. Tamayo, D., Rein, H., Petrovich, C., & Murray, N. (2017). Convergent migration renders TRAPPIST-1 long-lived. *The Astrophysical Journal*, 840(2), L19. <https://doi.org/10.3847/2041-8213/aa70ea> [↵](#)
73. MacDonald, M. G., & Dawson, R. I. (2018). Three pathways for observed resonant chains. *The Astronomical Journal*, 156(5), 228. <https://doi.org/10.3847/1538-3881/aae266> [↵](#)
74. Mah, J. (2018). Formation and dynamics of the resonant chain in the trappist-1 exoplanet system. *HKU Theses Online (HKUTO)*. [↵](#)
75. Brasser, R., Barr, A. C., & Dobos, V. (2019). The tidal parameters of TRAPPIST-1b and c. *Monthly Notices of the Royal Astronomical Society*, 487(1), 34–47. <https://doi.org/10.1093/mnras/stz1231> [↵](#)

76. Agol, E., Dorn, C., Grimm, S. L., Turbet, M., Ducrot, E., Delrez, L., ... Van Grootel, V. (2020). Refining the transit timing and photometric analysis of TRAPPIST-1: Masses, radii, densities, dynamics, and ephemerides. *ArXiv E-Prints*, arXiv:2010.01074. Retrieved from <http://arxiv.org/abs/2010.01074> [↵](#)
77. Batalha, N. E., Lewis, T., Fortney, J. J., Batalha, N. M., Kempton, E., Lewis, N. K., & Line, M. R. (2019). The Precision of Mass Measurements Required for Robust Atmospheric Characterization of Transiting Exoplanets. *The Astrophysical Journal Letters*, 885(1), L25. <https://doi.org/10.3847/2041-8213/ab4909> [↵](#)
78. Unterborn, C. T., Desch, S. J., Hinkel, N. R., & Lorenzo, A. (2018). Inward migration of the TRAPPIST-1 planets as inferred from their water-rich compositions. *Nature Astronomy*, 2(4), 297–302. <https://doi.org/10.1038/s41550-018-0411-6> [↵](#)
79. Unterborn, C. T., Hinkel, N. R., & Desch, S. J. (2018). Updated compositional models of the TRAPPIST-1 planets. *Research Notes of the AAS*, 2(3), 116. <https://doi.org/10.3847/2515-5172/aacf43> [↵](#)
80. Dorn, C., Mosegaard, K., Grimm, S. L., & Alibert, Y. (2018). Interior characterization in multiplanetary systems: TRAPPIST-1. *The Astrophysical Journal*, 865(1), 20. <https://doi.org/10.3847/1538-4357/aad95d> [↵](#)
81. Mann, A. W., Dupuy, T., Kraus, A. L., Gaidos, E., Ansdell, M., Ireland, M., ... Thao, P. C. (2019). How to Constrain Your M Dwarf. II. The Mass-Luminosity-Metallicity Relation from 0.075 to 0.70 Solar Masses. *The Astrophysical Journal*, 871(1), 63. <https://doi.org/10.3847/1538-4357/aaf3bc> [↵](#)
82. Seager, S., & Mallen-Ornelas, G. (2003). A unique solution of planet and star parameters from an extrasolar planet transit light curve. *The Astrophysical Journal*, 585(2), 1038–1055. <https://doi.org/10.1086/346105> [↵](#)
83. Agol, E., & Fabrycky, D. C. (2017). Transit-timing and duration variations for the discovery and characterization of exoplanets. In *Handbook of exoplanets* (pp. 1–20). Springer International Publishing. [https://doi.org/10.1007/978-3-319-30648-3\\_7-1](https://doi.org/10.1007/978-3-319-30648-3_7-1) [↵](#)
84. Mardling, R. A. (2007). Long-term tidal evolution of short-period planets with companions. *Monthly Notices of the Royal Astronomical Society*, 382(4), 1768–1790. <https://doi.org/10.1111/j.1365-2966.2007.12500.x> [↵](#)
85. Batygin, K., Bodenheimer, P., & Laughlin, G. (2009). DETERMINATION OF THE INTERIOR STRUCTURE OF TRANSITING PLANETS IN MULTIPLE-PLANET SYSTEMS. *The Astrophysical Journal*, 704(1), L49–L53. <https://doi.org/10.1088/0004-637x/704/1/l49> [↵](#)



86. Baumeister, P., Padovan, S., Tosi, N., Montavon, G., Nettelmann, N., MacKenzie, J., & Godolt, M. (2019). Machine learning inference of the interior structure of low-mass exoplanets. *ArXiv E-Prints*, arXiv:1911.12745. Retrieved from <http://arxiv.org/abs/1911.12745> [↵](#)
87. Bolmont, E., Demory, B.-O., Blanco-Cuaresma, S., Agol, E., Grimm, S. L., Auclair-Desrotour, P., ... Leleu, A. (2020). Impact of tides on the transit-timing fits to the TRAPPIST-1 system. *Astronomy & Astrophysics*, 635, A117. <https://doi.org/10.1051/0004-6361/202037546> [↵](#)
88. Bourrier, V., Ehrenreich, D., Wheatley, P. J., Bolmont, E., Gillon, M., de Wit, J., ... Triaud, A. H. M. J. (2017). Reconnaissance of the TRAPPIST-1 exoplanet system in the Lyman- $\alpha$  line. *Astronomy and Astrophysics*, 599, L3. <https://doi.org/10.1051/0004-6361/201630238> [↵](#)
89. Roettenbacher, R. M., & Kane, S. R. (2017). The Stellar Activity of TRAPPIST-1 and Consequences for the Planetary Atmospheres. *The Astrophysical Journal Letters*, 851(2), 77. <https://doi.org/10.3847/1538-4357/aa991e> [↵](#)
90. Cohen, O., Glocer, A., Garraffo, C., Drake, J. J., & Bell, J. M. (2018). Energy Dissipation in the Upper Atmospheres of TRAPPIST-1 Planets. *The Astrophysical Journal Letters*, 856(1), L11. <https://doi.org/10.3847/2041-8213/aab5b5> [↵](#)
91. Tilley, M. A., Segura, A., Meadows, V., Hawley, S., & Davenport, J. (2019). Modeling Repeated M Dwarf Flaring at an Earth-like Planet in the Habitable Zone: Atmospheric Effects for an Unmagnetized Planet. *Astrobiology*, 19(1), 64–86. <https://doi.org/10.1089/ast.2017.1794> [↵](#)
92. Peacock, S., Barman, T., Shkolnik, E. L., Hauschildt, P. H., & Baron, E. (2019). Predicting the Extreme Ultraviolet Radiation Environment of Exoplanets around Low-mass Stars: The TRAPPIST-1 System. *The Astrophysical Journal*, 871(2), 235. <https://doi.org/10.3847/1538-4357/aaf891> [↵](#)
93. Frascetti, F., Drake, J. J., Alvarado-Gómez, J. D., Moschou, S. P., Garraffo, C., & Cohen, O. (2019). Stellar Energetic Particles in the Magnetically Turbulent Habitable Zones of TRAPPIST-1-like Planetary Systems. *The Astrophysical Journal*, 874(1), 21. <https://doi.org/10.3847/1538-4357/ab05e4> [↵](#)
94. Rodríguez-Mozos, J. M., & Moya, A. (2019). Erosion of an exoplanetary atmosphere caused by stellar winds. *Astronomy and Astrophysics*, 630, A52. <https://doi.org/10.1051/0004-6361/201935543> [↵](#)
95. Lee, E. J., & Chiang, E. (2015). To Cool is to Accrete: Analytic Scalings for Nebular Accretion of Planetary Atmospheres. *The Astrophysical Journal*, 811(1), 41. <https://doi.org/10.1088/0004-637X/811/1/41> [↵](#)
96. Owen, J. E., & Mohanty, S. (2016). Habitability of terrestrial-mass planets in the HZ of M Dwarfs - I. H/He-dominated atmospheres. *Monthly Notices of the Royal Astronomical Society*, 459(4), 4088–

4108. <https://doi.org/10.1093/mnras/stw959> [↵](#)
97. de Wit, J., Wakeford, H. R., Lewis, N. K., Delrez, L., Gillon, M., Selsis, F., ... Triaud, A. H. M. J. (2018). Atmospheric reconnaissance of the habitable-zone Earth-sized planets orbiting TRAPPIST-1. *Nature Astronomy*, 2, 214–219. <https://doi.org/10.1038/s41550-017-0374-z> [↵](#)
98. Luger, R., & Barnes, R. (2015). Extreme Water Loss and Abiotic O<sub>2</sub> Buildup on Planets Throughout the Habitable Zones of M Dwarfs. *Astrobiology*, 15(2), 119–143. <https://doi.org/10.1089/ast.2014.1231> [↵](#)
99. Kasting, J. F. (1988). Runaway and moist greenhouse atmospheres and the evolution of Earth and Venus. *Icarus*, 74(3), 472–494. [https://doi.org/10.1016/0019-1035\(88\)90116-9](https://doi.org/10.1016/0019-1035(88)90116-9) [↵](#)
100. Bolmont, E., Selsis, F., Owen, J. E., Ribas, I., Raymond, S. N., Leconte, J., & Gillon, M. (2017). Water loss from terrestrial planets orbiting ultracool dwarfs: implications for the planets of TRAPPIST-1. *Monthly Notices of the Royal Astronomical Society*, 464(3), 3728–3741. <https://doi.org/10.1093/mnras/stw2578> [↵](#)
101. Ribas, I., Bolmont, E., Selsis, F., Reiners, A., Leconte, J., Raymond, S. N., ... Anglada-Escudé, G. (2016). The habitability of Proxima Centauri b. I. Irradiation, rotation and volatile inventory from formation to the present. *Astronomy and Astrophysics*, 596, A111. <https://doi.org/10.1051/0004-6361/201629576> [↵](#)
102. Dong, C., Jin, M., Lingam, M., Airapetian, V. S., Ma, Y., & van der Holst, B. (2018). Atmospheric escape from the TRAPPIST-1 planets and implications for habitability. *Proceedings of the National Academy of Science*, 115(2), 260–265. <https://doi.org/10.1073/pnas.1708010115> [↵](#)
103. Hu, R., & Seager, S. (2014). Photochemistry in Terrestrial Exoplanet Atmospheres. III. Photochemistry and Thermochemistry in Thick Atmospheres on Super Earths and Mini Neptunes. *The Astrophysical Journal*, 784(1), 63. <https://doi.org/10.1088/0004-637X/784/1/63> [↵](#)
104. Morley, C. V., Fortney, J. J., Marley, M. S., Zahnle, K., Line, M., Kempton, E., ... Cahoy, K. (2015). Thermal Emission and Reflected Light Spectra of Super Earths with Flat Transmission Spectra. *The Astrophysical Journal*, 815(2), 110. <https://doi.org/10.1088/0004-637X/815/2/110> [↵](#)
105. Bourrier, V., de Wit, J., Bolmont, E., Stamenković, V., Wheatley, P. J., Burgasser, A. J., ... Van Grootel, V. (2017). Temporal Evolution of the High-energy Irradiation and Water Content of TRAPPIST-1 Exoplanets. *The Astronomical Journal*, 154(3), 121. <https://doi.org/10.3847/1538-3881/aa859c> [↵](#)
106. Koll, D. D. B., Malik, M., Mansfield, M., Kempton, E. M.-R., Kite, E., Abbot, D., & Bean, J. L. (2019). Identifying Candidate Atmospheres on Rocky M dwarf Planets via Eclipse Photometry. *ArXiv*



- E-Prints*, arXiv:1907.13138. Retrieved from <http://arxiv.org/abs/1907.13138> [↵](#)
107. Seager, S., & Deming, D. (2009). On the Method to Infer an Atmosphere on a Tidally Locked Super Earth Exoplanet and Upper Limits to GJ 876d. *The Astrophysical Journal*, 703(2), 1884–1889. <https://doi.org/10.1088/0004-637X/703/2/1884> [↵](#)
108. Selsis, F., Wordsworth, R. D., & Forget, F. (2011). Thermal phase curves of nontransiting terrestrial exoplanets. I. Characterizing atmospheres. *Astronomy and Astrophysics*, 532, A1. <https://doi.org/10.1051/0004-6361/201116654> [↵](#)
109. Koll, D. D. B., & Abbot, D. S. (2016). Temperature Structure and Atmospheric Circulation of Dry Tidally Locked Rocky Exoplanets. *The Astrophysical Journal*, 825(2), 99. <https://doi.org/10.3847/0004-637X/825/2/99> [↵](#)
110. Mansfield, M., Kite, E. S., Hu, R., Koll, D. D. B., Malik, M., Bean, J. L., & Kempton, Eliza. M.-R. (2019). Identifying Atmospheres on Rocky Exoplanets Through Inferred High Albedo. *ArXiv E-Prints*, arXiv:1907.13150. Retrieved from <http://arxiv.org/abs/1907.13150> [↵](#)
111. Vanderspek, R., Huang, C. X., Vanderburg, A., Ricker, G. R., Latham, D. W., Seager, S., ... Torres, G. (2019). TESS Discovery of an Ultra-short-period Planet around the Nearby M Dwarf LHS 3844. *The Astrophysical Journal Letters*, 871(2), L24. <https://doi.org/10.3847/2041-8213/aafb7a> [↵](#)
112. Hu, R., Ehlmann, B. L., & Seager, S. (2012). Theoretical Spectra of Terrestrial Exoplanet Surfaces. *The Astrophysical Journal*, 752(1), 7. <https://doi.org/10.1088/0004-637X/752/1/7> [↵](#)
113. Fortney, J. J. (2005). The effect of condensates on the characterization of transiting planet atmospheres with transmission spectroscopy. *Monthly Notices of the Royal Astronomical Society*, 364(2), 649–653. <https://doi.org/10.1111/j.1365-2966.2005.09587.x> [↵](#)
114. Ducrot, E., Gillon, M., Delrez, L., Agol, E., Rimmer, P., Turbet, M., ... de Wit, J. (2020). TRAPPIST-1: Global results of the Spitzer Exploration Science Program Red Worlds, 640, A112. <https://doi.org/10.1051/0004-6361/201937392> [↵](#)
115. Burdanov, A. Y., Lederer, S. M., Gillon, M., Delrez, L., Ducrot, E., de Wit, J., ... Van Grootel, V. (2019). Ground-based follow-up observations of TRAPPIST-1 transits in the near-infrared. *Monthly Notices of the Royal Astronomical Society*, 487(2), 1634–1652. <https://doi.org/10.1093/mnras/stz1375> [↵](#)
116. Neff, J. E., O’Neal, D., & Saar, S. H. (1995). Absolute Measurements of Starspot Area and Temperature: II Pegasi in 1989 October. *The Astrophysical Journal*, 452, 879. <https://doi.org/10.1086/176356> [↵](#)

117. Gully-Santiago, M. A., Herczeg, G. J., Czekala, I., Somers, G., Grankin, K., Covey, K. R., ... Liu, C.-F. (2017). Placing the Spotted T Tauri Star LkCa 4 on an HR Diagram. *The Astrophysical Journal*, 836(2), 200. <https://doi.org/10.3847/1538-4357/836/2/200> [↵](#)
118. Zhang, Z., Zhou, Y., Rackham, B. V., & Apai, D. (2018). The Near-infrared Transmission Spectra of TRAPPIST-1 Planets b, c, d, e, f, and g and Stellar Contamination in Multi-epoch Transit Spectra. *The Astronomical Journal*, 156(4), 178. <https://doi.org/10.3847/1538-3881/aade4f> [↵](#)
119. Lincowski, A. P., Meadows, V. S., Crisp, D., Robinson, T. D., Luger, R., Lustig-Yaeger, J., & Arney, G. N. (2018). Evolved climates and observational discriminants for the trappist-1 planetary system. *The Astrophysical Journal*, 867(1), 76. [↵](#)
120. Wordsworth, R. D., Forget, F., Selsis, F., Millour, E., Charnay, B., & Madeleine, J.-B. (2011). Gliese 581d is the First Discovered Terrestrial-mass Exoplanet in the Habitable Zone. *The Astrophysical Journal Letters*, 733(2), L48. <https://doi.org/10.1088/2041-8205/733/2/L48> [↵](#)
121. Yang, J., Cowan, N. B., & Abbot, D. S. (2013). Stabilizing Cloud Feedback Dramatically Expands the Habitable Zone of Tidally Locked Planets. *The Astrophysical Journal Letters*, 771(2), L45. <https://doi.org/10.1088/2041-8205/771/2/L45> [↵](#)
122. Shields, A. L., Meadows, V. S., Bitz, C. M., Pierrehumbert, R. T., Joshi, M. M., & Robinson, T. D. (2013). The Effect of Host Star Spectral Energy Distribution and Ice-Albedo Feedback on the Climate of Extrasolar Planets. *Astrobiology*, 13(8), 715–739. <https://doi.org/10.1089/ast.2012.0961> [↵](#)
123. Turbet, M., Leconte, J., Selsis, F., Bolmont, E., Forget, F., Ribas, I., ... Anglada-Escudé, G. (2016). The habitability of Proxima Centauri b. II. Possible climates and observability. *Astronomy and Astrophysics*, 596, A112. <https://doi.org/10.1051/0004-6361/201629577> [↵](#)
124. Kopparapu, R. kumar, Wolf, E. T., Arney, G., Batalha, N. E., Haqq-Misra, J., Grimm, S. L., & Heng, K. (2017). Habitable Moist Atmospheres on Terrestrial Planets near the Inner Edge of the Habitable Zone around M Dwarfs. *The Astrophysical Journal*, 845(1), 5. <https://doi.org/10.3847/1538-4357/aa7cf9> [↵](#)
125. Fujii, Y., Del Genio, A. D., & Amundsen, D. S. (2017). NIR-driven Moist Upper Atmospheres of Synchronously Rotating Temperate Terrestrial Exoplanets. *The Astrophysical Journal*, 848(2), 100. <https://doi.org/10.3847/1538-4357/aa8955> [↵](#)
126. Haqq-Misra, J., Wolf, Eric. T., Joshi, M., Zhang, X., & Kopparapu, R. K. (2018). Demarcating Circulation Regimes of Synchronously Rotating Terrestrial Planets within the Habitable Zone. *The Astrophysical Journal*, 852(2), 67. <https://doi.org/10.3847/1538-4357/aa9f1f> [↵](#)

127. Way, M. J., Del Genio, A. D., Aleinov, I., Clune, T. L., Kelley, M., & Kiang, N. Y. (2018). Climates of Warm Earth-like Planets. I. 3D Model Simulations. *The Astrophysical Journal Supplement Series*, 239(2), 24. <https://doi.org/10.3847/1538-4365/aae9e1> [↵](#)
128. Wolf, E. T., Kopparapu, R. K., & Haqq-Misra, J. (2019). Simulated Phase-dependent Spectra of Terrestrial Aquaplanets in M Dwarf Systems. *The Astrophysical Journal*, 877(1), 35. <https://doi.org/10.3847/1538-4357/ab184a> [↵](#)
129. Komacek, T. D., & Abbot, D. S. (2019). The Atmospheric Circulation and Climate of Terrestrial Planets Orbiting Sun-like and M Dwarf Stars over a Broad Range of Planetary Parameters. *The Astrophysical Journal*, 871(2), 245. <https://doi.org/10.3847/1538-4357/aafb33> [↵](#)
130. Suissa, G., Mandell, A. M., Wolf, E. T., Villanueva, G. L., Fauchez, T., & Kopparapu, R. kumar. (2019). Dim Prospects for Transmission Spectra of Ocean Earths Around M Stars. *ArXiv E-Prints*, arXiv:1912.08235. Retrieved from <http://arxiv.org/abs/1912.08235> [↵](#)
131. Caldas, A., Leconte, J., Selsis, F., Waldmann, I. P., Bordé, P., Rocchetto, M., & Charnay, B. (2019). Effects of a fully 3D atmospheric structure on exoplanet transmission spectra: retrieval biases due to day-night temperature gradients. *Astronomy and Astrophysics*, 623, A161. <https://doi.org/10.1051/0004-6361/201834384> [↵](#)
132. Yang, J., Leconte, J., Wolf, E. T., Merlis, T., Koll, D. D. B., Forget, F., & Abbot, D. S. (2019). Simulations of Water Vapor and Clouds on Rapidly Rotating and Tidally Locked Planets: A 3D Model Intercomparison. *The Astrophysical Journal*, 875(1), 46. <https://doi.org/10.3847/1538-4357/ab09f1> [↵](#)
133. Fauchez, T. J., Turbet, M., Wolf, E. T., Boutle, I., Way, M. J., Del Genio, A. D., ... Domagal Goldman, S. D. (2019). TRAPPIST-1 habitable atmosphere intercomparison (thai). Motivations and protocol. *Geoscientific Model Development Discussions*, 2019, 1–15. <https://doi.org/10.5194/gmd-2019-166> [↵](#)
134. Hu, R., Peterson, L., & Wolf, E. T. (2020). Oundefined\phantom2- and CO-rich Atmospheres for Potentially Habitable Environments on TRAPPIST-1 Planets. *The Astrophysical Journal*, 888(2), 122. <https://doi.org/10.3847/1538-4357/ab5f07> [↵](#)
135. Segura, A., Kasting, J. F., Meadows, V., Cohen, M., Scalo, J., Crisp, D., ... Tinetti, G. (2005). Biosignatures from Earth-Like Planets Around M Dwarfs. *Astrobiology*, 5(6), 706–725. <https://doi.org/10.1089/ast.2005.5.706> [↵](#)
136. Collaboration, G., Prusti, T., de Bruijne, J. H. J., Brown, A. G. A., Vallenari, A., Babusiaux, C., ... Zschocke, S. (2016). The Gaia mission. *Astronomy and Astrophysics*, 595, A1. <https://doi.org/10.1051/0004-6361/201629272> [↵](#)

137. Stassun, K. G., & Torres, G. (2018). Evidence for a Systematic Offset of  $-80 \mu\text{as}$  in the Gaia DR2 Parallaxes. *The Astrophysical Journal*, 862(1), 61. <https://doi.org/10.3847/1538-4357/aacafc> [↵](#)
138. Pecaut, M. J., & Mamajek, E. E. (2013). Intrinsic Colors, Temperatures, and Bolometric Corrections of Pre-main-sequence Stars. *The Astrophysical Journal Supplement Series*, 208(1), 9. <https://doi.org/10.1088/0067-0049/208/1/9> [↵](#)
139. Dieterich, S. B., Henry, T. J., Jao, W.-C., Winters, J. G., Hosey, A. D., Riedel, A. R., & Subasavage, J. P. (2014). The Solar Neighborhood. XXXII. The Hydrogen Burning Limit. *The Astronomical Journal*, 147(5), 94. <https://doi.org/10.1088/0004-6256/147/5/94> [↵](#)
140. Burgasser, A. J., Gillon, M., Melis, C., Bowler, B. P., Michelsen, E. L., Bardalez Gagliuffi, D., ... Blake, C. H. (2015). WISE J072003.20-084651.2: an Old and Active M9.5 + T5 Spectral Binary 6 pc from the Sun. *The Astronomical Journal*, 149(3), 104. <https://doi.org/10.1088/0004-6256/149/3/104> [↵](#)
141. Luhman, K. L. (2013). Discovery of a Binary Brown Dwarf at 2 pc from the Sun. *The Astrophysical Journal Letters*, 767(1), L1. <https://doi.org/10.1088/2041-8205/767/1/L1> [↵](#)
142. Henry, T. J., Subasavage, J. P., Brown, M. A., Beaulieu, T. D., Jao, W.-C., & Hambly, N. C. (2004). The Solar Neighborhood. X. New Nearby Stars in the Southern Sky and Accurate Photometric Distance Estimates for Red Dwarfs. *The Astronomical Journal*, 128(5), 2460–2473. <https://doi.org/10.1086/425052> [↵](#)
143. Bardalez Gagliuffi, D. C., Burgasser, A. J., Schmidt, S. J., Theissen, C., Gagné, J., Gillon, M., ...Looper, D. (2019). The Ultracool SpeXtoscopic Survey. I. Volume-limited Spectroscopic Sample and Luminosity Function of M7-L5 Ultracool Dwarfs. *The Astrophysical Journal*, 883(2), 205. <https://doi.org/10.3847/1538-4357/ab253d> [↵](#)
144. Henry, T. J., Jao, W.-C., Winters, J. G., Dieterich, S. B., Finch, C. T., Ianna, P. A., ... Vrijmoet, E. H. (2018). The Solar Neighborhood XLIV: RECONS Discoveries within 10 parsecs. *The Astronomical Journal*, 155(6), 265. <https://doi.org/10.3847/1538-3881/aac262> [↵](#)
145. Batalha, N. E., Mandell, A., Pontoppidan, K., Stevenson, K. B., Lewis, N. K., Kalirai, J., ... Nielsen, L. D. (2017). PandExo: A Community Tool for Transiting Exoplanet Science with JWST & HST. *Publications of the Astronomical Society of the Pacific*, 129(976), 064501. <https://doi.org/10.1088/1538-3873/aa65b0> [↵](#)
146. Schmidt, S. J., Hawley, S. L., West, A. A., Bochanski, J. J., Davenport, J. R. A., Ge, J., & Schneider, D. P. (2015). BOSS Ultracool Dwarfs. I. Colors and Magnetic Activity of M and L Dwarfs. *The Astronomical Journal*, 149(5), 158. <https://doi.org/10.1088/0004-6256/149/5/158> [↵](#)

147. Sullivan, P. W., Winn, J. N., Berta-Thompson, Z. K., Charbonneau, D., Deming, D., Dressing, C. D., ... Woods, D. (2015). The Transiting Exoplanet Survey Satellite: Simulations of Planet Detections and Astrophysical False Positives. *The Astrophysical Journal*, 809(1), 77. <https://doi.org/10.1088/0004-637X/809/1/77> [↔](#)