



City of Provincetown...

A two-story cottage, split among the dunes, causes two tall membranes of glass to allow a play of light to flood through both its ends

Beautiful exposed timber rafters soar above the tall central space

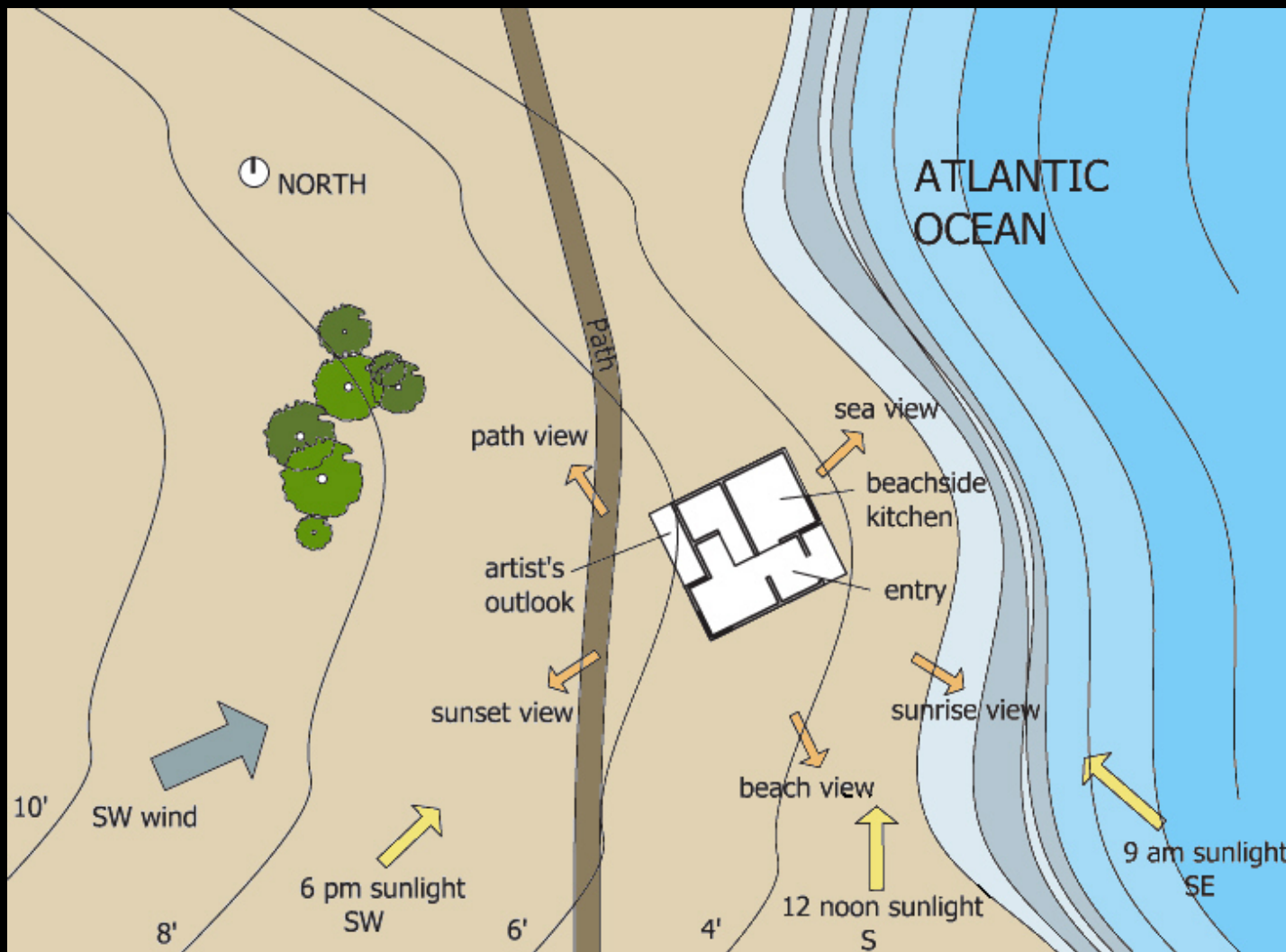
Climb upwards to a second-story bedroom loft, with a view off an artist's balcony

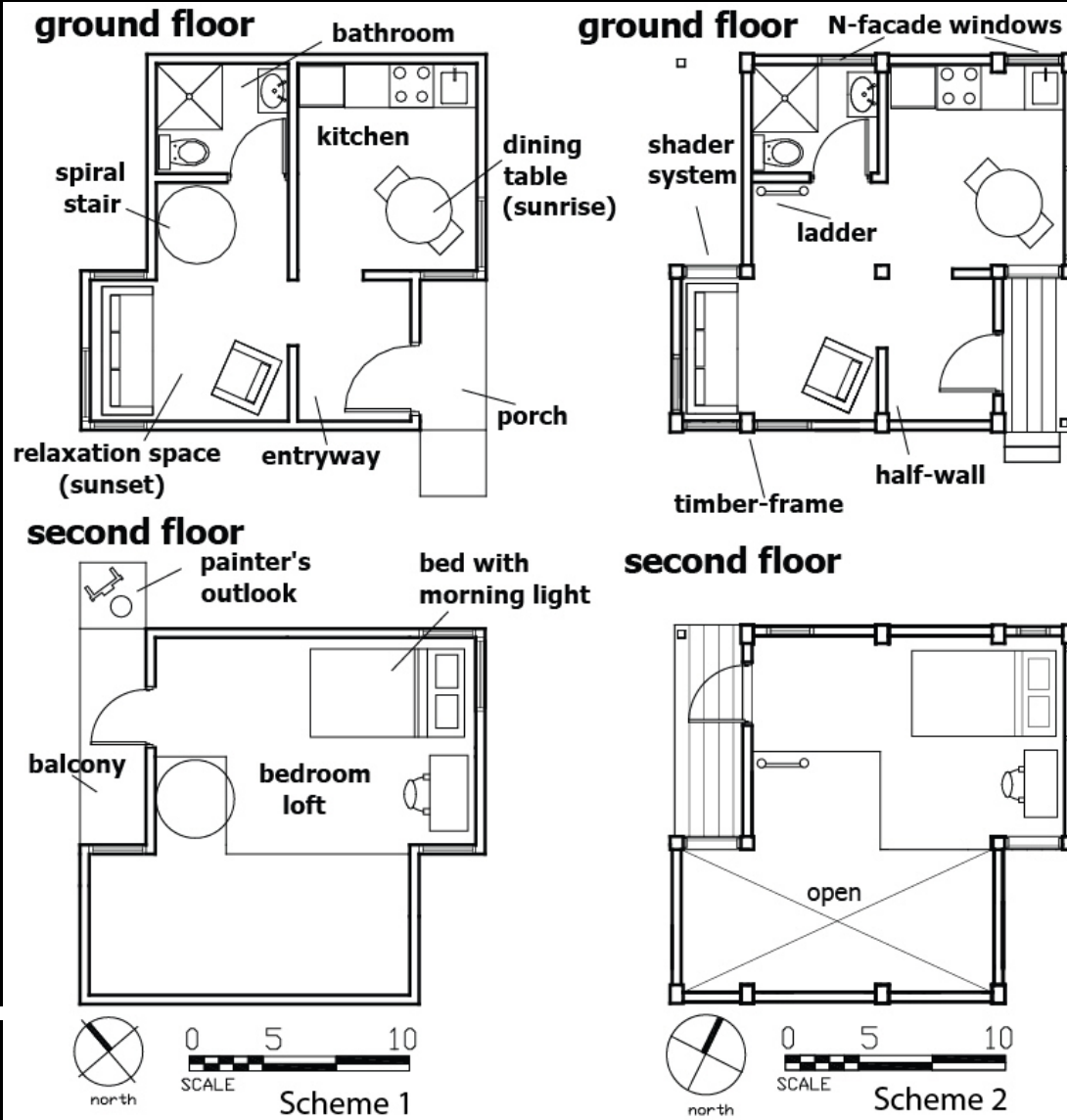
Timber frame construction lasts for generations and is a quicker, more environmentally friendly way to build

A unique space reminiscent of the Saltbox home, a distinctive style that originated in New England



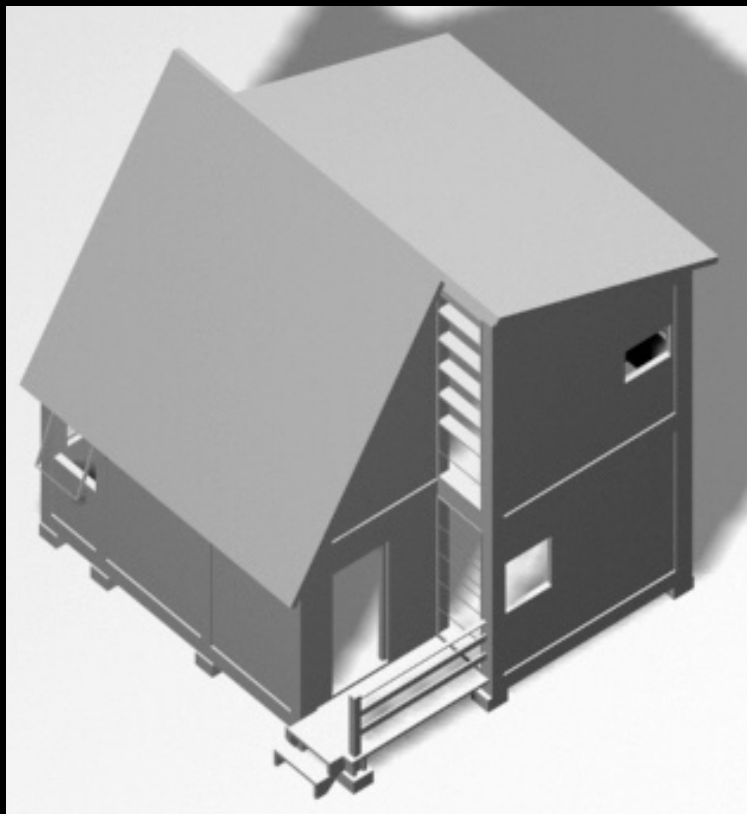
Trade in the honking of cars and gasoline fumes for the calm crash of waves and summer breezes. Rolling sand, rushing water, a walk along the beach...



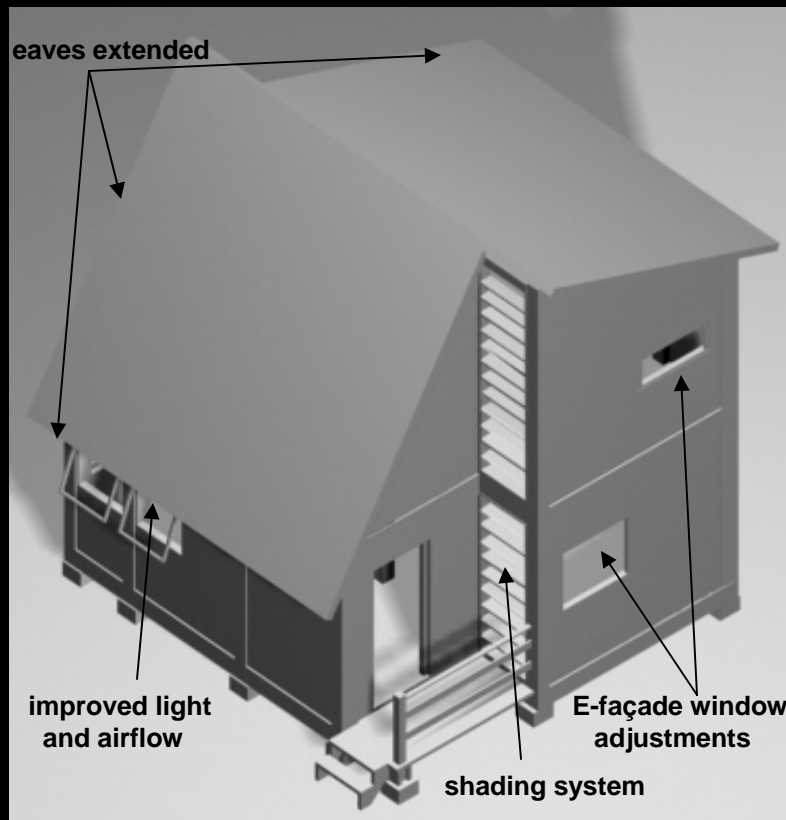


...scheme alterations...

- less crowded, more open ground floor
- interior lighting enhanced
- structurally accurate
- performance and feasibility improvements



Scheme 1



Scheme 2



Scheme 1



Scheme 2

Daylight Solutions in the Bedroom Loft

Tilted shades eliminate glare and create a fall-off of ambient light around desk, while the bed remains dark. Narrow bedside windows glow to bring in the morning, providing light and a view without sacrificing privacy.

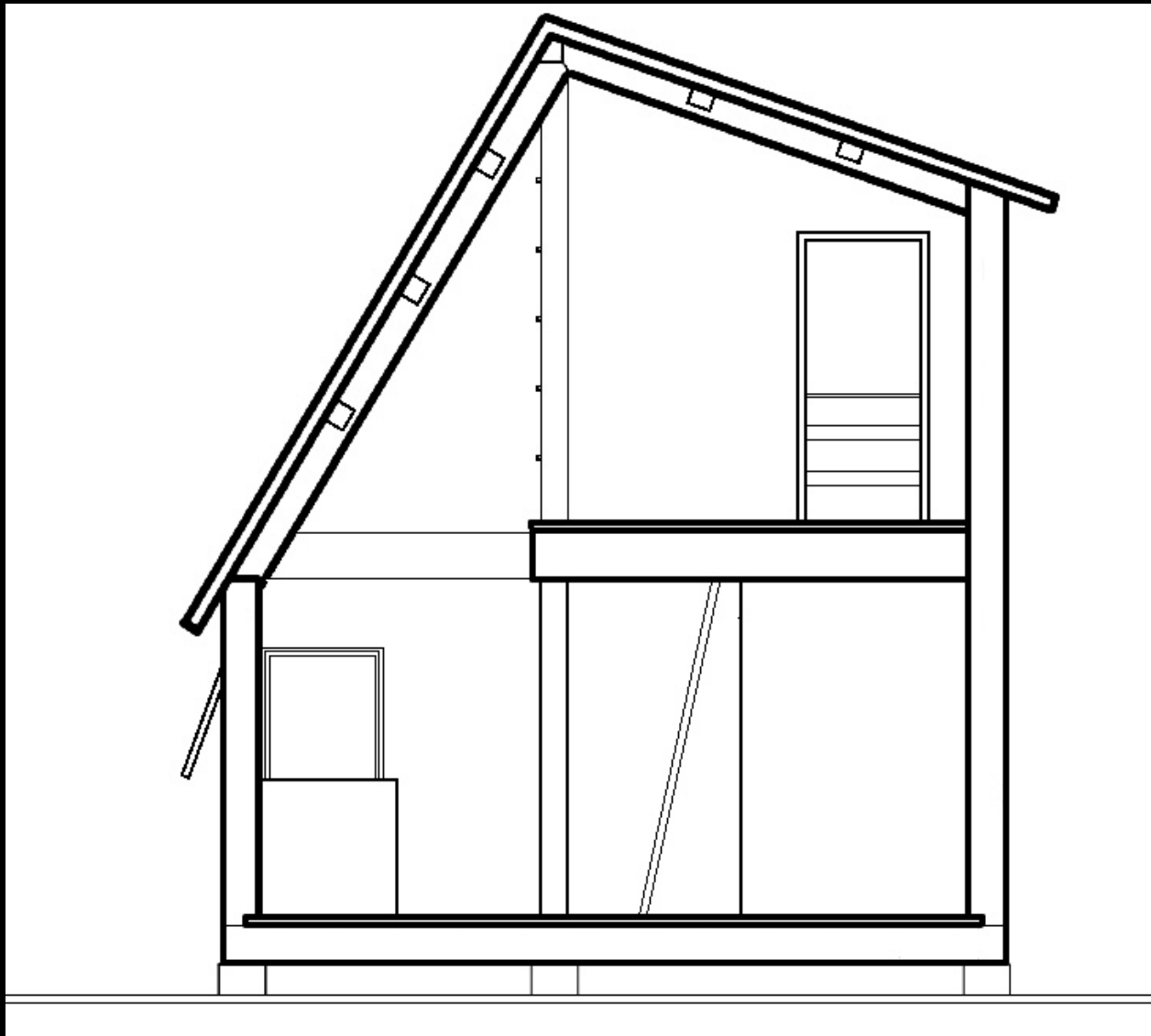


a SALT BOX, SPLIT

...section cut

Provincetown proposal
Bill McKenna, architect

6



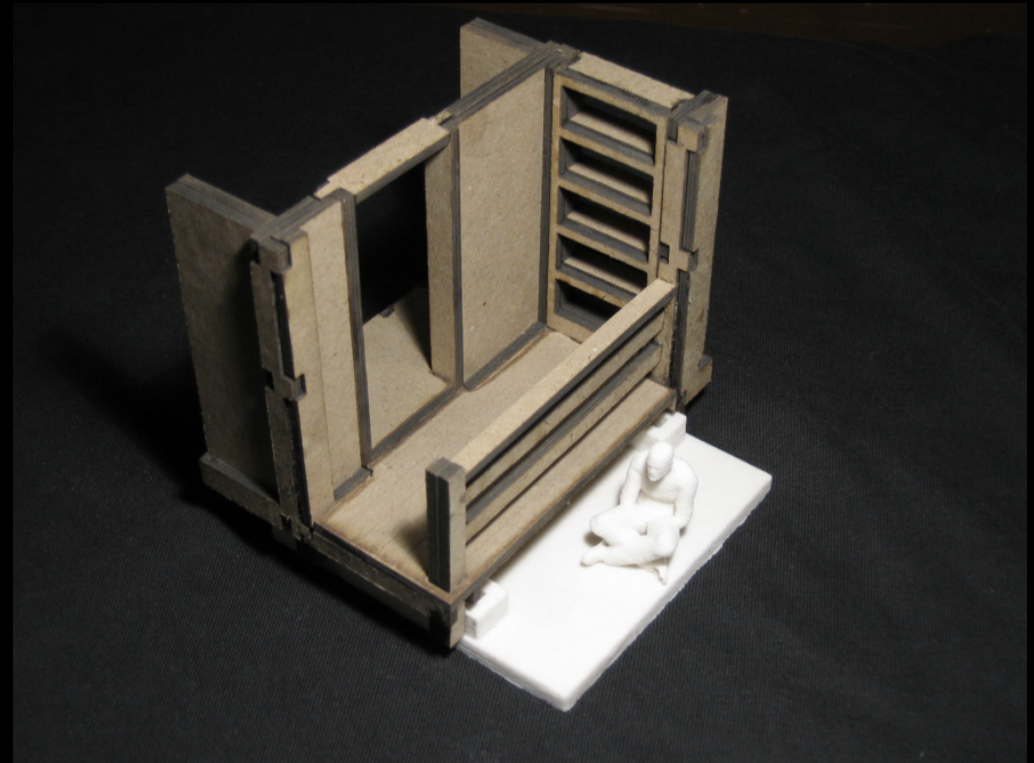
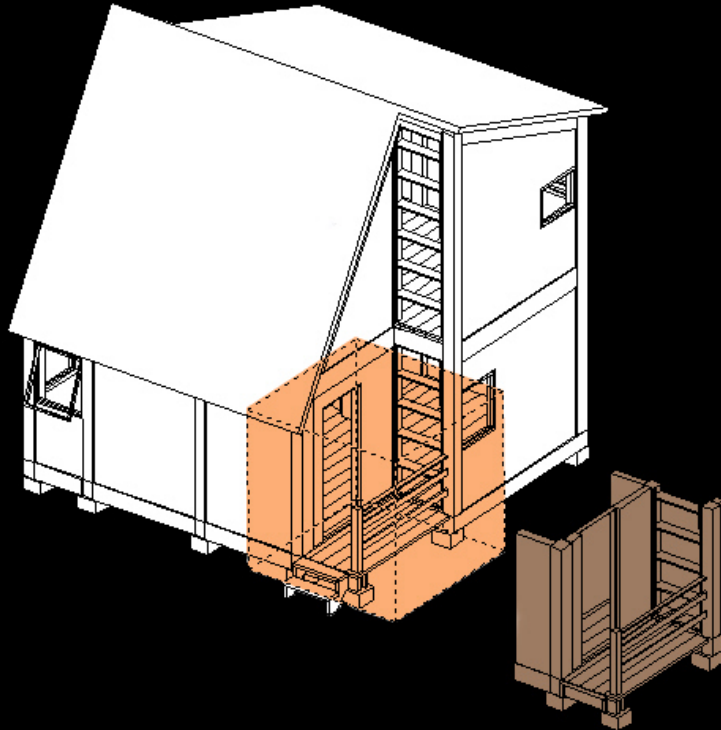


a SALT BOX, SPLIT

...rapid prototype

Provincetown proposal
Bill McKenna, architect

7



Prototyped region

Porch entrance and window to kitchen

Scale: 1/2"=1'-0"

Lasercut chipboard on bound-powder base