

MIT Joint Program on the Science and Policy of Global Change



The Influence of Shale Gas on U.S. Energy and Environmental Policy

Henry D. Jacoby, Francis M. O'Sullivan, and Sergey Paltsev

**Report No. 207
November 2011**

The MIT Joint Program on the Science and Policy of Global Change is an organization for research, independent policy analysis, and public education in global environmental change. It seeks to provide leadership in understanding scientific, economic, and ecological aspects of this difficult issue, and combining them into policy assessments that serve the needs of ongoing national and international discussions. To this end, the Program brings together an interdisciplinary group from two established research centers at MIT: the Center for Global Change Science (CGCS) and the Center for Energy and Environmental Policy Research (CEEPR). These two centers bridge many key areas of the needed intellectual work, and additional essential areas are covered by other MIT departments, by collaboration with the Ecosystems Center of the Marine Biology Laboratory (MBL) at Woods Hole, and by short- and long-term visitors to the Program. The Program involves sponsorship and active participation by industry, government, and non-profit organizations.

To inform processes of policy development and implementation, climate change research needs to focus on improving the prediction of those variables that are most relevant to economic, social, and environmental effects. In turn, the greenhouse gas and atmospheric aerosol assumptions underlying climate analysis need to be related to the economic, technological, and political forces that drive emissions, and to the results of international agreements and mitigation. Further, assessments of possible societal and ecosystem impacts, and analysis of mitigation strategies, need to be based on realistic evaluation of the uncertainties of climate science.

This report is one of a series intended to communicate research results and improve public understanding of climate issues, thereby contributing to informed debate about the climate issue, the uncertainties, and the economic and social implications of policy alternatives. Titles in the Report Series to date are listed on the inside back cover.


Ronald G. Prinn and John M. Reilly
Program Co-Directors

For more information, please contact the Joint Program Office

Postal Address: Joint Program on the Science and Policy of Global Change
77 Massachusetts Avenue
MIT E19-411
Cambridge MA 02139-4307 (USA)

Location: 400 Main Street, Cambridge
Building E19, Room 411
Massachusetts Institute of Technology

Access: Phone: +1(617) 253-7492
Fax: +1(617) 253-9845
E-mail: globalchange@mit.edu
Web site: <http://globalchange.mit.edu/>

 Printed on recycled paper

The Influence of Shale Gas on U.S. Energy and Environmental Policy

Henry D. Jacoby^{a*}, Francis M. O’Sullivan^b and Sergey Paltsev^a

Abstract

The emergence of U.S. shale gas resources to economic viability affects the nation’s energy outlook and the expected role of natural gas in climate policy. Even in the face of the current shale gas boom, however, questions are raised about both the economics of this industry and the wisdom of basing future environmental policy on projections of large shale gas supplies. Analysis of the business model appropriate to the gas shales suggests that, though the shale future is uncertain, these concerns are overstated. The policy impact of the shale gas is analyzed using two scenarios of greenhouse gas control—one mandating renewable generation and coal retirement, the other using price to achieve a 50% emissions reduction. The shale gas is shown both to benefit the national economy and to ease the task of emissions control. However, in treating the shale as a “bridge” to a low carbon future there are risks to the development of technologies, like capture and storage, needed to complete the task.

Contents

1. THE SHALE REVOLUTION	1
2. SHALE GAS: RESOURCE, PRODUCTION AND ECONOMICS.....	3
2.1 The Scale of U.S. Shale Resources.....	3
2.2 The Shale Gas Business.....	4
2.3 Future Natural Gas Supply and Cost	7
3. THE EFFECT OF SHALE ON POTENTIAL GREENHOUSE GAS POLICY	8
3.1 Analysis Method.....	9
3.1.1. Model Structure	9
3.1.2. Other Influential Assumptions	10
3.2 Effect on Potential Regulatory Measures	10
3.3 Implications for Stringent Mitigation Using Price	13
4. CONCLUSIONS.....	16
5. REFERENCES.....	17

1. THE SHALE REVOLUTION

Gas production from shale resources is changing the U.S. energy outlook. Shale deposits, found in many parts of the U.S., have long been known to contain large quantities of gas but it was economically unrecoverable. It has become commercially viable in the last decade because of innovative applications of technology—mainly horizontal drilling (to access more resource rock from each well) and hydraulic fracturing of the rock to release the gas—so-called fracking. The result has been a boom in shale gas investment—creating expectations of a natural gas “revolution” (e.g., Deutch, 2011) and leading the International Energy Agency (IEA) to include a scenario of the Golden Age of Gas in its 2011 World Energy Outlook (IEA, 2011).

The change in outlook can be seen in **Figure 1**, which shows projections of domestic gas production and imports of liquefied natural gas (LNG). Two of the production cases are from the

^a Joint Program on the Science and Policy of Global Change, Massachusetts Institute of Technology, 77 Massachusetts Avenue, Cambridge, MA 02139.

* Corresponding author. Email: [hjacob@mit.edu](mailto:hjacoby@mit.edu), Tel: 617-253-6609, Fax: 617-253-9845.

^b MIT Energy Initiative, Massachusetts Institute of Technology, 77 Massachusetts Avenue, Cambridge, MA 02139.

MIT Emissions Prediction and Policy Analysis (EPPA) model described below. One is a Reference case, with no climate policy beyond that in place in 2011; the other imposes the same conditions as the Reference but assumes no shale development. Without supplies from shale, U.S. gas production in the EPPA simulations is projected to peak by around 2025. This was the view of the U.S. Energy Information Administration as recently as its 2006 Annual Energy Outlook (U.S. EIA, 2006), also shown in the figure.

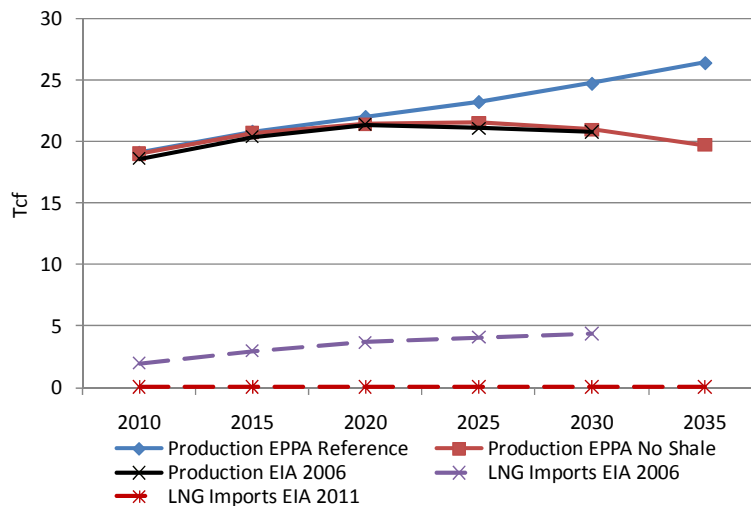


Figure 1. Projections of U.S. Gas Production and of LNG Imports.

Another feature of projections only a few years back was the expectation of growing LNG imports. In the 2006 U.S. EIA Outlook LNG imports were projected to approach 5 Tcf per year by 2030. In fact, imports are near zero in 2011 and are not now expected by the DOE analysts to recover as far out as the 2035 end-point of their projection (U.S. EIA, 2011). Unfortunately, in response to the earlier expectations the rated U.S. LNG import capacity grew from less than 1 Tcf in 2000 to over 6 Tcf today.

The development of the shale resource has implications not only for the utilization of existing infrastructure but also for future investment and for energy and environmental policy. Questions remain, however. The shale development is very recent, and it is different from previous gas resource supplies in the economics of the industry and the environmental issues it raises. As a result, there are uncertainties in the degree to which its potential will be realized—leading to controversy over the extent to which energy and environmental policy should be based on projections of shale supplies and the wisdom of looking to gas to provide a “bridge” to a low carbon future based on non-fossil energy and CO₂ capture and storage.

Here we review the nature of the shale resource and the exploitation methods being applied, and explore their implications for the economics of the industry and for two scenarios of U.S. efforts to control greenhouse gas (GHG) emissions. One approach is regulatory, mandating renewable generation and retirement of coal plants, and the other applies an emissions price to

meet an emissions target. To investigate these issues we draw on data gathering and analysis by an MIT study of The Future of Natural Gas (MITEI, 2011).

2. SHALE GAS: RESOURCE, PRODUCTION AND ECONOMICS

Natural gas comes in various mixtures of hydrocarbons, and is found in a variety of geological settings. While its dominant constituent is methane it also may include heavier molecules such as ethane, propane, butane, pentane, *etc.* So called “wet gas” deposits contain higher proportions of these heavier compounds, which are separated and marketed as natural gas liquids (NGLs), in general at a substantially higher price than the dry gas. Some natural gas is associated with oil production, but 89% of U.S. gas is non-associated.

Natural gas resource areas or “plays” are classified by the geological characteristics of the reservoir. Conventional gas is produced from discrete, well-defined reservoirs with permeability greater than a specified lower limit. The other three types, termed unconventional, involve reservoirs where permeability is low and they include “tight” sandstones, coal beds and shales. The shale formations include a wide range of sedimentary rock types which generally are only 100-200 feet thick but deposited over large areas. Shales serve as source rock for the gas found in conventional reservoirs, and gas that has not escaped from the shale is held in the strata in one of three ways—adsorbed on the rock surface, as free gas in fissures, or as free gas in the rock pores. Horizontal drilling creates more reservoir contact than is possible with a vertical well; hydraulic fracturing increases well permeability, enabling the gas trapped in the rock to be produced at economic flow rates.

2.1 The Scale of U.S. Shale Resources

U.S. shale deposits are extensive, though only a subset appears to have the geological histories and petrophysical characteristics to be productive. These include the Barnett, Haynesville, Fayetteville and Woodford shales in Texas, Louisiana, Arkansas and Oklahoma, along with the Marcellus shale that underlies portions of the states of Pennsylvania, West Virginia and New York. The past year has also seen substantial activity in the Eagle Ford shale in Texas and the Bakken shale in North Dakota. These latter plays have come to the fore due to their high liquids content and the large margin between the dry gas price and that for NGLs, which are priced similar to oil.

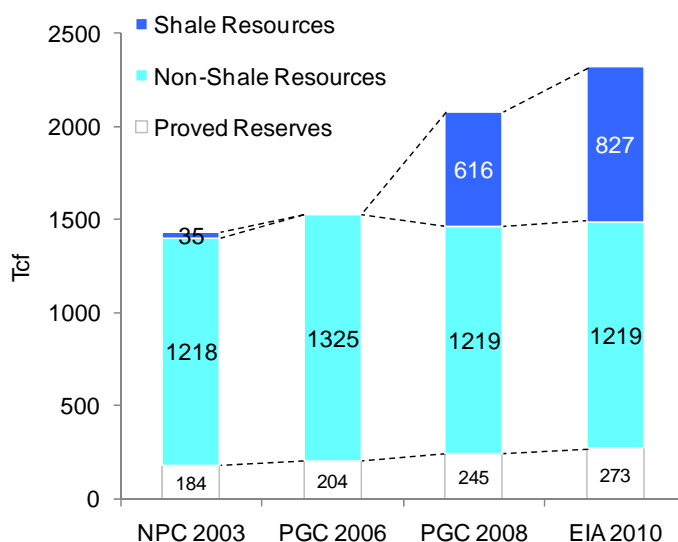


Figure 2. Impact of Shale Gas on Estimates of U.S. Resources and Proved Reserves.

The development of these resources has had a dramatic effect on two common measures of gas resources: proved reserves and technically recoverable resources. Proved reserves are well-defined gas volumes, known to be recoverable with a high degree of certainty. Technically recoverable resources are a broader category that includes the proved reserves along with gas volumes that are not yet being exploited but which can be expected to be identified by future exploration, given currently available technology, and independent of cost considerations.

Figure 2 shows the effect of shale gas on estimates over the past seven years of U.S. technically recoverable resources by the National Petroleum Council (NPC), the Potential Gas Committee (PGC) and the U.S. Energy Information Administration (U.S. EIA). Estimated shale resources have grown from near zero to 36% of technically recoverable resources. Each of the volumes shown is a single-point estimate. The MIT study probed uncertainty in the shale resource and reached a mean estimate of technically recoverable resources of 631 Tcf with an 80% confidence interval of 418 to 871 Tcf (MITEL, 2011).

The effect of shale on U.S. gas production has been similarly dramatic, rising from near zero in 1990 to 20% of domestic supply in 2010.

2.2 The Shale Gas Business

Despite this impressive performance, questions have been raised about the validity of forecasts of a “golden age” of gas (*e.g.*, Urbina, 2011). It is observed that the rate of production decline is very high in shale wells, leading to charges that shale gas producers have overstated their proved reserves. It is also the case that the production performance can vary dramatically among shale wells, with many having much lower flow rates than what gas producers suggested was to be expected. This casual level of analysis leads some to the conclusion that in many instances shale wells will never make money and that the economic attractiveness of the shale

resources is overstated. There is a germ of truth in each of these observations about early shale development, but the conclusions drawn from them reveal a lack of understanding of the difference between the shale business and conventional gas development.

First, regarding the issue of rapid production decline and overstated proved reserves: shale wells do show high early decline rates, in some cases by 60-80% in the first year; however, this rate of decline moderates significantly over time. In shales with longer production histories (*e.g.*, the Barnett) well decline rates after four to five years are around 10% per year. The unique decline rate behavior of the shales is, however, taken into account in estimating shale reserves (MITEI, 2011, Appendix 2D). It is worth noting, nonetheless, there is still uncertainty in these estimates because the shale resource is so new, and wells have not yet been in production long enough to draw definitive conclusions about longer-term performance. For a useful survey of the challenge see Lee and Sidle (2010)

Next is the concern about the great variability in shale well performance, an illustration of which is shown in **Figure 3** which plots the distributions of the initial production (IP) rates (30 day averages) for wells drilled in the Barnett shale. The median (P50) initial production rate for the more than 11,100 wells was 1,470 Mcf/day. However, 20% of the wells had an IP rate of greater than 2,530 Mcf/day, while another 20% had IP rates of less than 700 Mcf/day. Moreover, this wide distribution of well performance, even in the same play, remained just about the same over the 2005-2010 period when average well IP rate was improving year to year.

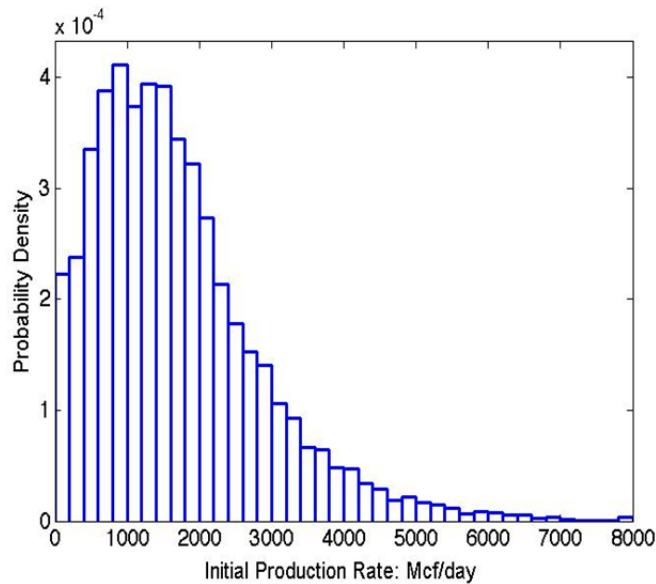


Figure 3. Distribution of Per-Well Initial Production Rates for Barnett Shale Wells, 2005 to 2010 (HPDI Production Data Base).

This performance record, which is supported by initial production data from other major shale plays, suggests that a stochastic element in well performance is a normal aspect of shale development, leading to a business model different from that familiar in the gas industry. In traditional gas production operators invest significant capital exploring for conventional gas

reservoirs, and then only develop wells where performance is predicted to be economically attractive. The shale business differs in that, once a shale play has been proved, operators will, where possible, drill their acreage in a contiguous manner, often drilling multiple horizontal wells from one well pad. This yields significant operational advantages including a reduction in drilling time and the ability to coordinate pipeline construction with drilling schedules to allow early marketing of the gas.

This approach to development is often referred to as a “manufacturing” process, but that term fails to capture the fact that such contiguous drilling results in much greater variation in well performance than is typical of traditional exploration and selective drilling methods. A result of this variation is that shale operators must evaluate the economic performance of their acreage on a portfolio basis rather than at an individual well level. In effect, in comparison with conventional gas resources, a reduction in exploration risk has been exchanged for an increase in production risk.

Finally, there is the question whether gas developers are currently making money, and whether it matters for longer-run expectations. One of the more trenchant critiques of shale gas development is that it is a speculative bubble, that companies are not making money at 2011 gas prices (around \$4 per Mcf), and that evidence of overreaching today should dampen confidence in the future of this resource. The details of individual company investments are outside the scope of this study, but useful insight can be gained from estimates of the breakeven price (BEP) in each of the major plays. For this exploration we draw on a play-level resource and cost analysis by the MIT Gas Study (MITEI, 2011, Appendix 2D) which applied a discounted cash flow analysis based on the 2009 median, high (P20) and low (P80) IP rates in each play, assuming a 10% target rate of return. For each play, we take the same median assumptions for lease cost, well drilling and completion, well operation and maintenance, royalties and taxes. Updates are introduced to some of the well performance data and the analysis is extended to include the BEP for the mean as well as the median IP rate. BEPs are calculated based on gas output only; some of the plays, particularly the Marcellus, contain “wet” areas that would reduce the BEP for those wells. Cost variation among the plays results mainly from differences in the depth of the shale deposit.

Table 1. Initial production (IP) and Breakeven Price (BEP) for 2009 vintage wells in major U.S. shale plays based on the mean, median, P20, and P80 IP rates.

		Barnett	Fayetteville	Haynesville	Marcellus	Woodford
Mean	IP: Mcf/day	1,923	2,183	7,973	3,500	2,676
	BEP: \$/Mcf	5.63	5.07	4.99	4.00	5.67
Median	IP: Mcf/day	1,727	2,030	7,693	n/a	2,520
	BEP: \$/Mcf	6.16	5.39	5.15	n/a	5.97
P20	IP: Mcf/day	2,700	3,100	12,300	5,500	4,200
	BEP: \$/Mcf	4.27	3.84	3.56	2.87	3.95
P80	IP: Mcf/day	900	1,200	3,000	1,500	1,000
	BEP: \$/Mcf	10.98	8.49	11.75	8.09	13.71

Several points about the BEP results (**Table 1**) are worth noting. First, for each play the mean BEP is less than the median, reflecting the asymmetrical distribution of resources even within a play (see Figure 3) and the fact that, at least for the 2009 vintage wells, developers were unable to identify the more productive areas. Also, the variability in IP rate within a play is very great. (Indeed, there can be great variation in productivity of wells drilled from the same pad.) In the case of the Barnett, there is a 2.5X difference between a P20 and P80 well BEP, while in the Woodford, that difference is 3.5X.¹ Because operators only develop portions of a play, their economics are biased by the relative quality of their particular acreage. Because of this intra-play variation it is certain that some operators with the 2009 vintage wells have failed to make the 10% rate of return assumed in Table 1. (Indeed, some wells may have been drilled simply to hold onto leases which require drilling investment within a specified period at penalty of lease termination.) Others, however, have achieved significantly better returns.

Even given this mixed picture of the apparent productivity of the shale business in its early years—not surprising for a newly accessible resource—the average economics of the major U.S. shale plays in recent years, with mean BEPs in the range of \$4.00-\$5.70 per Mcf, have been attractive relative to other gas resource types in the U.S. The question of a “golden era” then depends on estimates of the way this resource will progress from these early boom years.

2.3 Future Natural Gas Supply and Cost

The long-term role of natural gas will be determined by the ultimate size and economics of the shale resource, and of conventional gas, tight gas and coal-bed methane. To explore this prospect we extend the analysis of recent history to the application of long-term supply curves for each resource type. Here again we turn to the MIT study, which produced curves for the U.S. and Canada, shown in **Figure 4**. This effort involved the establishment of an inventory of all the known and potential gas resources including producing fields, stranded fields, likely extensions

¹ Other components of the MIT study show that variation in lease and well costs, and royalty rates, could contribute plus or minus \$1 per Mcf to the estimates in Table 1. Uncertainty in well performance dominates the variation in within-play costs.

of producing fields, and estimates of resources likely to be found through future exploration (the so-called yet-to-find resource). All the volume estimates were established probabilistically. Production profiles and development costs were then estimated using algorithms that accounted for field size, drilling depth and location. The cost data used in the modeling was based on a variety of sources including the API Joint Association Survey on Drilling Costs, the Petroleum Service Association of Canada Well Cost Studies and U.S. EIA Oil and Gas Lease Equipment and Operating costs. A DCF model was used to determine the breakeven price for development and production, taking account of royalties and taxes, at a 10% real rate of return. For a detailed description of the calculation see (MITEI, 2011, Appendices 2B & 2C).

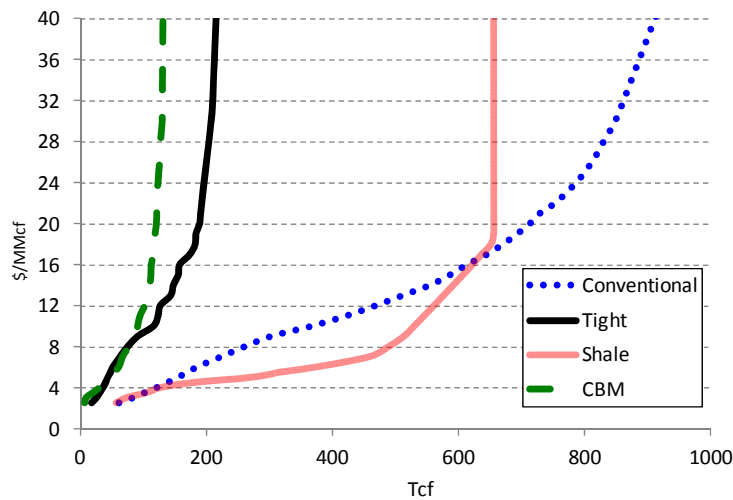


Figure 4. Mean U.S. Supply Curves by Type.

The estimates account for expenses for environmental control. However, continuing concern is expressed about water pollution in the development process, particularly methane contamination of drinking water, as documented by Osborn *et al.* (2011), possible spills of drilling fluids, and the management of return factor fluids. Shale operations are regulated at the state level, and standards differ among states. Reviews of these regulations are under way in several states and at the federal level, and a tightening of regulatory standards is likely in some states. Recent analysis (Vaughan and Pursell, 2010) suggests these regulatory driven cost increases would be in the \$300-\$900K range with the most likely increase around \$500K. Given that the overall cost of well development is on the order of \$5M, these enhanced regulations will not have a very significant impact on the economic attractiveness of the shale resource, or on the insights to be drawn from the analysis below.

3. THE EFFECT OF SHALE ON POTENTIAL GREENHOUSE GAS POLICY

Applying these cost data we explore the implications of shale gas for the two alternative approaches to greenhouse gas control. In each case we consider two alternative states of nature (or more accurately, states of technology and cost)—one representing resource availability as seen today and the other assuming that shale development remains uneconomic at any gas price. The emergence of shale to commercial viability is shown to have a set of contradictory effects: it

stimulates the U.S. economy, yielding more emissions than if shale remained uneconomic but provides flexibility to meet reduction targets at lower cost.

3.1 Analysis Method

3.1.1. Model Structure

We apply the MIT Emissions Prediction and Policy Analysis (EPPA) model which is a multi-region, multi-sector representation of the global economy (Paltsev *et al.*, 2005; Paltsev *et al.*, 2011). It is a computable general equilibrium (CGE) model that solves for the prices and quantities of interacting domestic and international markets for energy and non-energy goods and factor markets. The model identifies sectors that produce and convert energy, industrial sectors that use energy and produce other goods and services, and households that consume goods and services (including energy)—with the non-energy production side of the economy aggregated into five industrial sectors. These and other sectors have intermediate demands for all goods and services determined through an input-output structure. Final demand sectors include households, government, investment goods, and exports. Imports compete with domestic production to supply intermediate and final demands. Demand for fuels and electricity by households includes energy services such as space conditioning, lighting, *etc.* and a separate representation of demand for household transportation (the private automobile). Energy production and conversion sectors include coal, oil, and gas production, petroleum refining, and an extensive set of alternative generation technologies.

The EPPA model includes all the non-CO₂ Kyoto gases, and where needed these are converted to a CO₂-equivalent greenhouse gas measure using standard 100-year global warming potentials (GWPs). The model also includes an estimate of fugitive emissions from natural gas development documented by Waugh *et al.* (2011) that is consistent with the level proposed by the Environmental Protection Agency (U.S. EPA, 2011). There are claims (*e.g.*, Howarth *et al.*, 2011) that shale wells vent substantially more methane than conventional gas development. The underlying analysis is controversial, but even the suggested increase in emissions from this component of the chain of supply and use would not diminish the contribution of shale gas under a multi-gas target by enough to change the insights to be drawn from our analysis.²

Conventional gas, tight gas, coal bed methane and shale gas resources are modeled separately, and as with other fossil energy types each is represented as a graded resource whose cost of production rises as it is depleted.³ Natural gas supply is determined by a two-stage process where reserves are produced from resources and gas is produced from reserves. Natural gas reserves expansion is driven by changes in gas prices, with reserve additions determined by elasticities benchmarked to the gas supply curves presented in Figure 4 (see Paltsev *et al.*, 2011).

² Howarth *et al.* (2011) further argue that natural gas may be an even greater greenhouse gas source than coal. Besides the questionable interpretation of methane leakage data, the analysis assumes an inappropriate substitution of gas for coal generation technology, and sums effects using 20-year GWP. For discussion see MITEI (2011, Appendix 1A).

³ Resources include proved reserves, reserve growth (in further development on known fields) and undiscovered resources that are expected to result from future exploration.

Sixteen geographical regions are represented in the EPPA model, including eight of the largest individual countries, and the model computes the trade in all energy and non-energy goods among these regions so that results can be used to explore potential international trade in natural gas.

The advantage of this type of model is its ability to explore ways that domestic and global energy markets will be influenced by the complex interaction of influences like resource estimates, technology assumptions, and policy measures. Models have limitations, of course. Influential input assumptions—*e.g.*, about population and economic growth, and the ease of an economy’s adjustment to price changes—are subject to uncertainty over decades. Also, details of market structure and the behavior of individual industries are beneath the level of aggregation of model sectors, and are reflected only implicitly in aggregate production functions. Considering these strengths and weaknesses, results should be viewed not as predictions, where confidence can be attributed to the particular numbers, but rather as illustrations of the directions and relative magnitudes of various influences of the shale gas, and as a basis for forming intuition about desirable energy and environmental policies.

3.1.2. Other Influential Assumptions

Costs of other energy technologies are the same as those documented in the MIT Gas Study (MITEI, 2011, Appendix 3a). In addition, in recognition of recent difficulties of nuclear generation its growth is limited to 25% growth over the 2005 level. If this constraint is relaxed the main effect is for nuclear to displace renewable generation (so long as renewables are not mandated).

International trade in gas now takes place primarily within three regional markets—North America, Europe and Russia with links to North Africa, and Asia with a link the Middle East—with only small volumes traded among agents in the different markets. In the simulations below it is assumed that this pattern of regional markets is maintained. The implications of the emergence of a global market, akin to that for crude oil, are analyzed in the MIT study (MITEI, 2011, Chapter 3) and in Paltsev *et al.* (2011), and the potential effects of movement in this direction are addressed below.

3.2 Effect on Potential Regulatory Measures

To approximate national emissions policies most actively pursued at present we impose (1) a renewable energy standard (RES) requiring a 25% renewable share of electric generation by 2030, and (2) the retirement of 50% of current U.S. coal-fired generation capacity by 2030. Does the shale gas make much difference under this set of measures, and if so to whom? We begin with the hypothetical no-shale world and then consider what is different in the outlook today. **Figure 5** shows the no-shale case on the left and the current estimate on the right, and provides pictures of electric generation in trillions of kWh (T_{kWh}) and total national energy use in quadrillion BTU (qBTU). The total in each figure, including Reduced Use, is the electric generation or total energy in a no-policy reference case.

Note first that the shale resource has a positive effect on economic growth and energy use. Total energy is 8% higher in 2050 than with no shale, and sums to a 3% addition to energy use over 2010-2050. In the no-shale scenario electricity prices under the regulatory scenario rise above those projected with no policy (**Figure 6**), yielding an 8% reduction in demand by 2050. Without the shale resource, the gas price would be projected to rise substantially, to a 2050 level some 20% higher than if there were no regulatory constraint.⁴ Even at its higher price, however, gas use in electricity generation would increase, to replace the declining coal output. In addition, toward the end of the period renewable generation would be driven above the mandated 25% level. Nuclear output would be at its limit, and there is not much flexibility in the hydro source in any case.

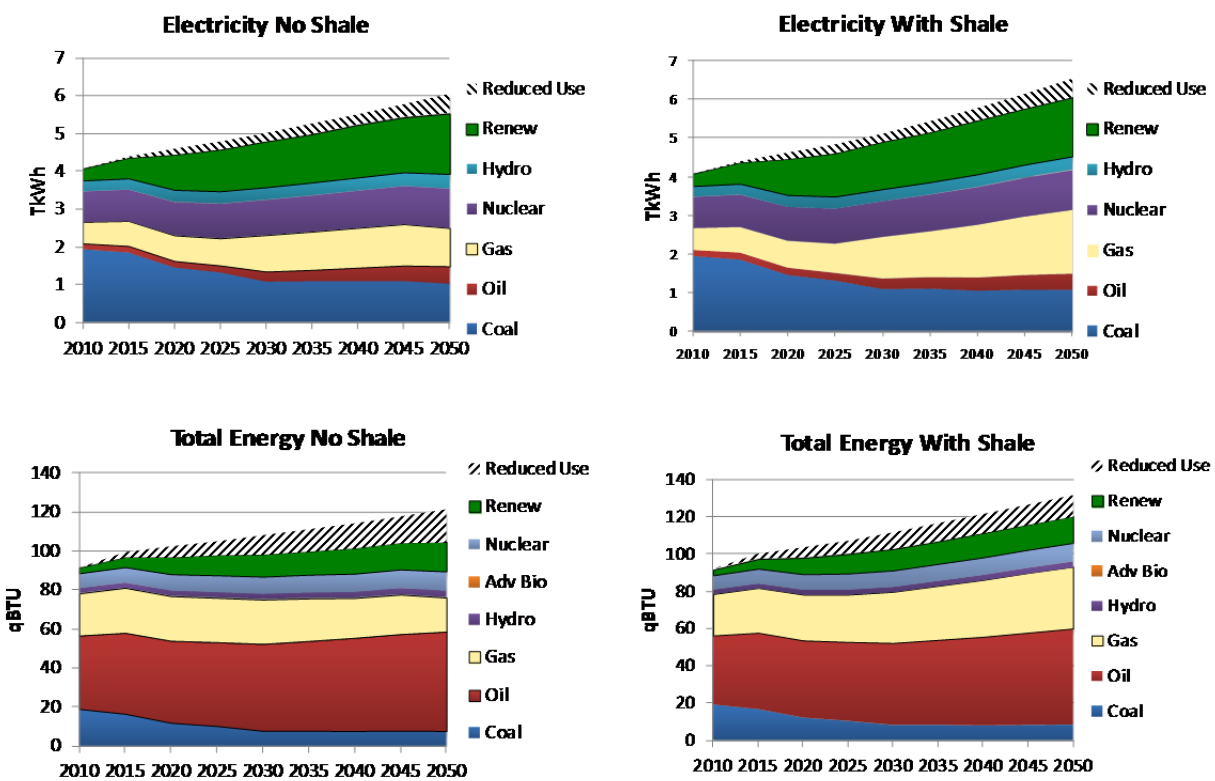


Figure 5. U.S. Quantities under Regulatory Policy.

⁴ In the EPPA model the assumption of regional gas markets tends to limit the flexibility to substitute imports for domestic supply at these high prices. The analysis thus may overstate the price growth in the no-shale case, depending on assumptions about development of a global LNG market, supply decisions in major exporting countries, and U.S. policy regarding import dependence (see MITEI, 2011, Chapter 3).

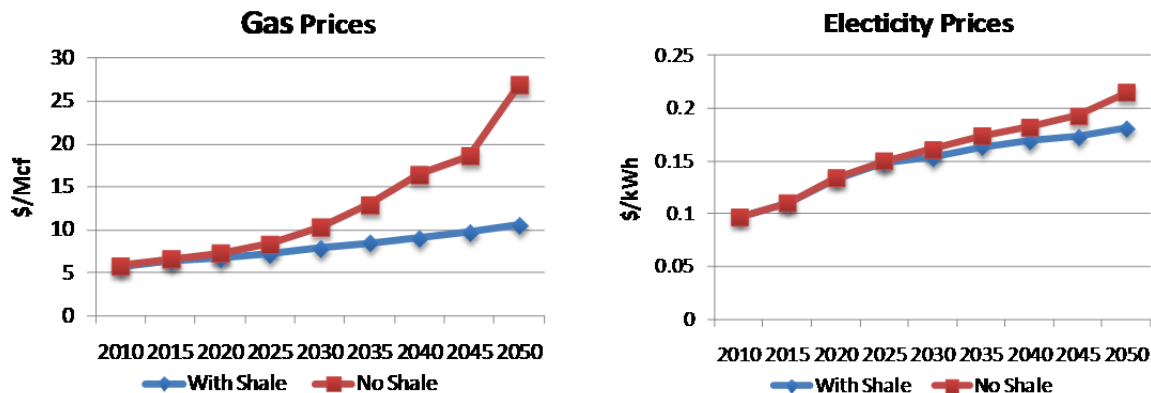


Figure 6. U.S. Prices under Regulatory Policy.

The higher gas prices would then have substantial effects on non-electric sectors. By 2050 higher overall energy costs would yield a 15% reduction in total energy use. Also, gas use would be gradually squeezed out of other sectors (primarily from industry) as indicated by the fact that total gas use declines while gas fired generation increases.

The nation’s current gas outlook, with shale, produces a different picture. Gas in electric generation is projected to increase by a factor of three over the simulation period, to meet the higher national energy demand under these supply and price conditions. In addition, there are a number of other changes from the assumed state with no shale: because of somewhat lower electricity prices (Figure 6) there is less reduction in use, and renewable generation never rises above the regulatory 25% minimum. The benefits of the shale resource are also reflected in total energy use. The lower gas prices lead to a lower reduction in use than would be the case under more stringent gas supplies, and total gas use expands by 50% over the period.

With no shale this set of measures would reduce GHG emissions by only 2% below 2005 in 2050 (and by 19% in cumulative emissions 2010-2050). With the current shale outlook the projections show a 13% *increase* over 2005 by 2050 (a 17% cumulative reduction from the no-policy scenario). With the lower gas resource the cost in reduced welfare (measured as aggregate national consumption) in 2050 would be 1.1% compared to a no-policy scenario, and the shale eases the task to a 0.7% 2050 reduction. Assuming a discount rate of 4% the net present value of the reduction in welfare over the period, if shale were not economic, is \$1.03 trillion (2005 dollars), while under current expectations the projected cost is \$0.98 trillion (to be considered against a larger economy).⁵ Incidentally, if this same GHG achievement were to be sought by use of an emissions price the cost over the period, assuming current gas expectations, would be only \$0.6 trillion (a 0.4% reduction in welfare in 2050 relative to the no-policy scenario).⁶

⁵ The analysis ignores potential ancillary benefits of the fuel shift, such as reduction in air pollutants like NOx, SOx and particulates, and any climate change benefits.

⁶ This is a familiar result. As summarized by Teitenberg (1990) the high cost of command-and-control regulation in relation to a price incentive is seen in many areas of environmental control.

Beyond this cost reduction, the increased gas supply from shale provides useful flexibility, to meet needs for base-load power if our nuclear assumption were to prove optimistic or greater coal retirements were sought. On the other hand, if regulatory measures of this type are the only GHG actions the U.S. is likely to undertake for the foreseeable future, then there is no market for technologies like capture and storage even without the shale, and its emergence only further reduces their prospects.

3.3 Implications for Stringent Mitigation Using Price

This policy scenario, which requires a 50% GHG reduction below 2005 by 2050, involves more substantial changes in energy technology, and the imposition of a GHG price imposes a difference between the price of gas to the producer and to the consumer. Again, focusing first on the electric sector (**Figure 7**, top left) if shale were uneconomic gas use in generation would be projected to grow slightly for a few decades, but toward the end of the period it would be priced out of this use because of the combination of rising producer price and the emissions penalty. Renewable generation would grow to 29% of total electric demand, above level mandated in the regulatory case. Coal would maintain a substantial position in generation, though reduced, to 2025; and beginning at that point coal with capture and storage (CCS) would first become economic, growing to substantial scale by the end of the period. Nuclear would be limited by the assumption of a maximum 25% growth above its 2010 level. The remainder of the required reduction would be met by cuts in electricity use.

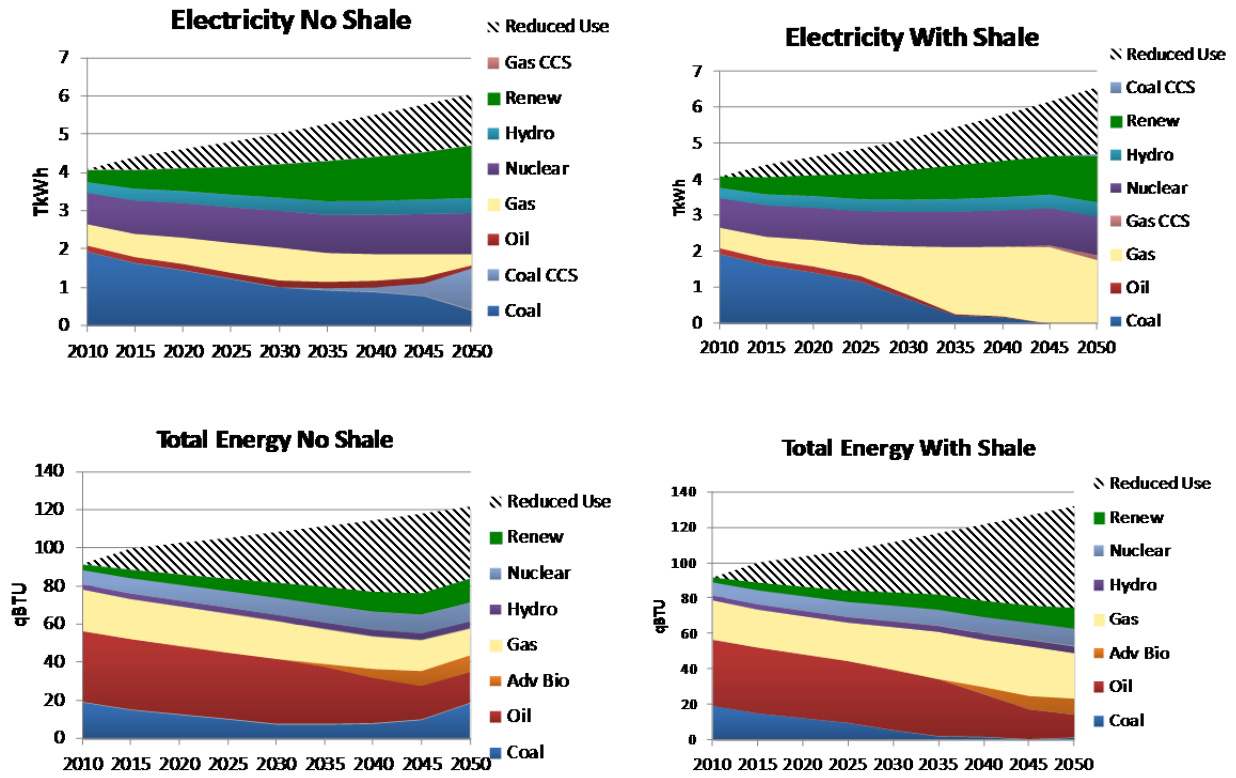


Figure 7. U.S. Quantities under a 50% Target.

The effect of this 50% target on total energy use absent the shale gas (bottom left) is a reduction in demand, driven by the higher consumer gas price (**Figure 8**), and the introduction of advanced biofuels. Gas use declines over the period as the conventional gas, tight gas and coal-bed methane are depleted, but by a lesser fraction than in electricity generation because at these prices the gas is relatively more valuable in industrial and other non-electric uses.

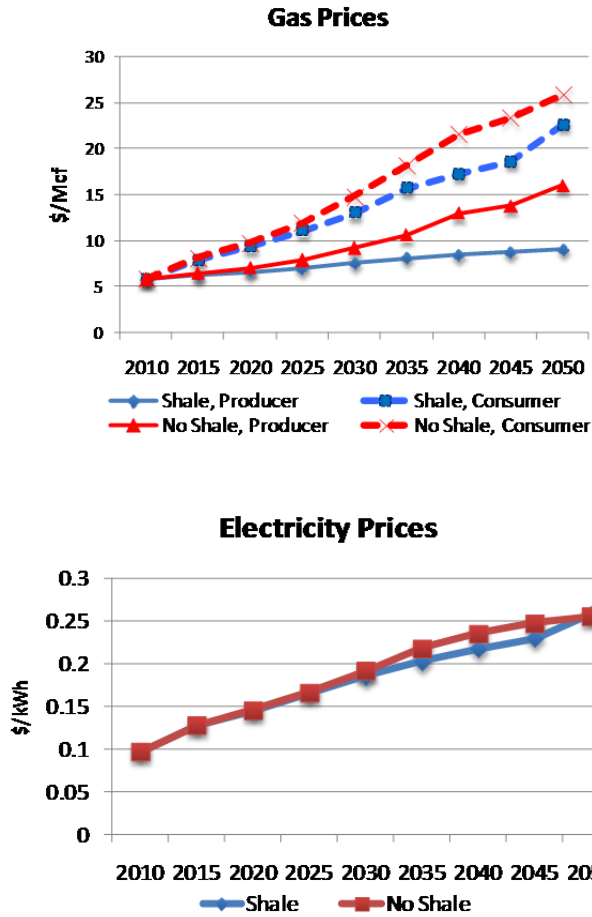


Figure 8. Prices under a 50% Target.

The current state of nature, shown on the right-hand side of Figure 7, creates a very different energy future. Gas is substantially cheaper (Figure 8) and increasing gas generation drives conventional coal out of the system. Toward the end of the period, moreover, the increasing gas price plus carbon charge begins to force conventional gas use out of the electric generation, and in 2040 gas with CCS is first projected to become economic. In 2045, coal with CCS also begins to become economic (producing less than 1TkWh, a level too small to show in the figure) — lagging gas because of the still relatively-low gas price. Renewable supplies are lower than they would be without the cheaper gas. The electricity price is similar between the two states of gas economics (Figure 8) but the reduction in use is somewhat higher than without shale because, nuclear being constrained, the with-shale case does not benefit soon enough from the low-emission base-load source provided by CCS technologies.

In the mix of total energy use gas is expected to grow over the simulation period. To meet the needs of the transport sector, advanced biofuels take market share beginning in 2035. With current gas resources the reduction in total energy use under this policy, relative to a no-policy scenario, is about 20% in 2010 and 45% in 2050.

The U.S. economy could adjust to either of these states of the world, and under this stringent reduction the growth-inducing effect of the larger gas resource is slightly more potent than its role in smoothing the adjustment to lower emissions. Recognizing that the figures are not directly comparable since they reflect different states of the world, we can again compare the difference in cost caused by the availability of the shale gas. The cost of the policy under current expectation, calculated as above as the net present value of the reduction in welfare over the period of 2010-2050, is about \$3.3 trillion (a 3.1% reduction in 2050), whereas if the shale resource were not economic that cost would be \$3.0 trillion (a 2.8% reduction in 2050). The slightly lower cost in the no-shale scenario is due to the lower emissions in the corresponding no-policy reference, and therefore the lower effort required to meet the 50% target.

Note that the desired pace of technology development is strongly affected by the emergence of the shale resource. The entrance of the shale supplies has the effect of driving coal out of electric generation, whereas without the shale coal would be projected to begin to recover from a “valley of death” with the introduction of coal-CCS around 2035. With the shale source this resurrection is not projected until some 10-15 years later. Moreover, gas with CCS may under these conditions be the technology likely to first see commercial viability. And, as would be expected, the cheaper gas serves to reduce the rate of market penetration of renewable generation.

4. CONCLUSIONS

The emergence of shale gas supplies is a boon to the U.S. economy and an aid to potential climate policy. The lower-cost energy is projected to stimulate greater economic growth over the period to 2050, and to ease the task of GHG control over coming decades. Under regulatory constraint, one instance of which is analyzed here, the shale eases the task and provides an important source of flexibility when other sources of base-load power are under threat. Under a stringent target, implemented by emissions price, the economic benefits are even greater.

There are risks, however, in basing the U.S. energy outlook on current expectations without a careful eye on uncertainties in the future of the gas sector in the U.S. and worldwide. First of all, shale gas exploitation is at an early stage, yielding substantial uncertainty regarding future supply conditions, as there is in all the categories of domestic gas supply, including public willingness to accept its environmental side effects (*e.g.*, see Shale Gas Subcommittee, 2011). Even given the lease, tax and development costs assumed here, there is variation around the mean estimates of gas supply curves in Figure 4. Exploration of the range of supply conditions is beyond the scope of this paper, but an impression can be gained by comparing the “with shale” cases presented here with results for an 80% confidence bound on these curves in the MIT study (MITEI, 2011, Chapter 3). Supply and cost data have been updated since that study, but the results are close enough for a rough impression. Even in the P10 case (90% probability of being exceeded) the gas production in 2050 is higher than today under the 50% reduction—instead of being reduced in half (Figure 7) if shale were uneconomic.

Also relevant is the potential evolution of the international LNG market away from the regional markets pattern assumed here and toward more interregional gas competition, loosening price contracts based on oil as are common in Europe and Asia. The MIT study (MITEI, 2011) explores a case where the gas market becomes akin to the global oil market, with a global prices differentiated only by transportation cost. In such a case the U.S. would, as U.S. gas prices rise, again import LNG originating in still lower-cost sources abroad. Movement in this direction will depend on market forces, supply decisions by major resource holders in the Middle East and Russia, and U.S. policies about import dependence. But even in the face of such a change over decades the influence of the U.S. shale gas would be the same: lowering national gas prices and stimulating the economy and energy demand and facilitating the path to emissions reduction.

Moreover, these changes in international markets may be magnified by the future development of shale resources outside the U.S., which were not included in our analysis. Though gas shale deposits are known to exist in many area of the world (Kuuskraa *et al.*, 2011) their economic potential outside the U.S. is yet very poorly understood. If, however, preliminary resource estimates prove correct and supplies follow a path like that in the U.S., there will be dramatic implications for global gas use, trade and price, as well as for the geopolitics of energy (Medlock *et al.*, 2011).

Finally, the gas “revolution” has important implications for the direction and intensity of national efforts to develop and deploy low-emission technologies, like CCS for coal and gas. With nothing more than regulatory policies of the type and stringency simulated here there is no market for these technologies, and the shale gas reduces interest even further. Under more stringent GHG targets these technologies are needed, but the shale gas delays their market role by up to two decades. Thus in the shale boom there is the risk of stunting these programs altogether. While taking advantage of this gift in the short run, treating gas a “bridge” to a low-carbon future, it is crucial not to allow the greater ease of the near-term task to erode efforts to prepare a landing at the other end of the bridge.

Acknowledgments

Special thanks go to Tony Meggs and Qudisia Ejaz for their work underlying the estimates of shale resources and economics. Development of the economic model applied in this paper was supported by the U.S. Department of Energy, Office of Science (DE-FG02-94ER61937); the U.S. Environmental Protection Agency; the Electric Power Research Institute; and other U.S. government agencies and a consortium of 40 industrial and foundation sponsors. For a complete list see <http://globalchange.mit.edu/sponsors/current.html>.

5. REFERENCES

- Deutch, J., 2011: The Good News about Gas: The Natural Gas Revolution and its Consequences. *Foreign Affairs*, 90(1): 82-93.
- Howarth, R., R. Santoro and A. Ingraffea, 2011: Methane and the greenhouse-gas footprint of natural gas from shale formations. *Climatic Change*, 106: 679-690.

- IEA [International Energy Agency], 2011: Are We Entering a Golden Age of Gas? World Energy Outlook Special Report, OECD, Paris. Available at: http://www.iea.org/weo/docs/weo2011/WEO2011_GoldenAgeofGasReport.pdf
- Kuuskras, V., S. Stevens, T. Van Leeuwen and K. Moodhe, 2011: World Shale Gas Resources: An Initial Assessment of 15 Regions Outside the United States. Advanced Resources International, Arlington, VA.
- Lee, J. and R. Sidle, 2011: Gas-Reserves Estimation in Resource Plays. *SPE Economics & Management*, 130102-PA, October.
- Medlock, K., A. Jaffe and P. Hartley, 2011: Shale Gas and National Security. James A. Baker III Institute for Public Policy, Rice University.
- MITEI [MIT Energy Initiative], 2011: The Future of Natural Gas: An Interdisciplinary MIT Study. Cambridge, MA. Available at: <http://web.mit.edu/mitei/research/studies/natural-gas-2011.shtm>
- Osborn, S., A. Vengosh, N. Warner and R. Jackson, 2011: Methane contamination of drinking water accompanying gas-well drilling and hydrologic fracturing. *Proceedings of the National Academy of Sciences*, 108(20): 8172-8176.
- Paltsev, S., H. Jacoby, J. Reilly, Q. Ejaz, J. Morris, F. O'Sullivan, S. Rausch, N. Winchester and O. Kraga, 2011: The future of U.S. natural gas production, use, and trade. *Energy Policy*, 39: 5309-5321.
- Paltsev, S., J. Reilly, H. Jacoby, R. Eckaus, J. McFarland, M. Sarofim, M. Asadoorian and M. Babiker, 2005: The MIT Emissions Prediction and Policy Analysis (EPPA) Model: Version 4. MIT JPSPGC Report 125, August, 72 p. Cambridge, MA. Available at: http://globalchange.mit.edu/files/document/MITJPSPGC_Rpt125.pdf
- Shale Gas Subcommittee, U.S. Secretary of Energy Advisory Board, 2011: The SEAB Shale Gas Production Subcommittee Ninety-Day Report – August 11, 2011. Available at: http://www.shalegas.energy.gov/resources/081111_90_day_report.pdf.
- Teitenberg, T., 1990: Economic Instruments for Environmental Regulation. *Oxford Review of Economic Policy*, 6(1): 17-33. Also in R. Stavins [ed.], 2005: *Economics of the Environment: Selected Readings*, W.W. Norton, London.
- Urbina, I., 2011: Insiders Sound an Alarm Amid a Natural Gas Rush, Behind Veneer, Doubt on Future of Natural Gas, and Lawmakers Seek Inquiry of Natural Gas Industry, *The New York Times*: June 25, June 26 and June 28 respectively.
- U.S. EIA [U.S. Energy Information Administration], 2006: Annual Energy Outlook, DOE/EIA-0383(2006), U.S. Department of Energy, Washington, DC.
- U.S. EIA [U.S. Energy Information Administration], 2011: Annual Energy Outlook, DOE/EIA-0383(2011), U.S. Department of Energy, Washington, DC.
- U.S. EPA [Environmental Protection Agency], 2011: Inventory of U.S. Greenhouse Gas Emissions and Sinks: 1990-2009, EPA 430-R-11-005, Washington DC, April 15.
- Vaughan, A. and D. Pursell, 2010: Frac Attack: Risks, Hype and Financial Reality of Hydrologic Fracturing in the Shale Plays. Tudor, Pickering, Holt & Co. and Reservoir Research Partners, July 8. http://tudor.na.bdvision.ipreo.com/NSightWeb_v2.00/Handlers/Document.ashx?i=2ac12b4d442943a090b8b0a8c8d24114

Waugh, C., S. Paltsev, N. Selin, J. Reilly, J. Morris and M. Sarofim, 2011: Emission Inventory for Non-CO2 Greenhouse Gases and Air Pollutants in EPPA 5, MIT JPSPGC, Technical Note 12. Available at: <http://globalchange.mit.edu/pubs/technotes.html>.

REPORT SERIES of the MIT Joint Program on the Science and Policy of Global Change

1. **Uncertainty in Climate Change Policy Analysis**
Jacoby & Prinn December 1994
2. **Description and Validation of the MIT Version of the GISS 2D Model** *Sokolov & Stone* June 1995
3. **Responses of Primary Production and Carbon Storage to Changes in Climate and Atmospheric CO₂ Concentration** *Xiao et al.* October 1995
4. **Application of the Probabilistic Collocation Method for an Uncertainty Analysis** *Webster et al.* January 1996
5. **World Energy Consumption and CO₂ Emissions: 1950-2050** *Schmalensee et al.* April 1996
6. **The MIT Emission Prediction and Policy Analysis (EPPA) Model** *Yang et al.* May 1996 (*superseded* by No. 125)
7. **Integrated Global System Model for Climate Policy Analysis** *Prinn et al.* June 1996 (*superseded* by No. 124)
8. **Relative Roles of Changes in CO₂ and Climate to Equilibrium Responses of Net Primary Production and Carbon Storage** *Xiao et al.* June 1996
9. **CO₂ Emissions Limits: Economic Adjustments and the Distribution of Burdens** *Jacoby et al.* July 1997
10. **Modeling the Emissions of N₂O and CH₄ from the Terrestrial Biosphere to the Atmosphere** *Liu* Aug. 1996
11. **Global Warming Projections: Sensitivity to Deep Ocean Mixing** *Sokolov & Stone* September 1996
12. **Net Primary Production of Ecosystems in China and its Equilibrium Responses to Climate Changes**
Xiao et al. November 1996
13. **Greenhouse Policy Architectures and Institutions**
Schmalensee November 1996
14. **What Does Stabilizing Greenhouse Gas Concentrations Mean?** *Jacoby et al.* November 1996
15. **Economic Assessment of CO₂ Capture and Disposal**
Eckaus et al. December 1996
16. **What Drives Deforestation in the Brazilian Amazon?**
Pfaff December 1996
17. **A Flexible Climate Model For Use In Integrated Assessments** *Sokolov & Stone* March 1997
18. **Transient Climate Change and Potential Croplands of the World in the 21st Century** *Xiao et al.* May 1997
19. **Joint Implementation: Lessons from Title IV's Voluntary Compliance Programs** *Atkeson* June 1997
20. **Parameterization of Urban Subgrid Scale Processes in Global Atm. Chemistry Models** *Calbo et al.* July 1997
21. **Needed: A Realistic Strategy for Global Warming**
Jacoby, Prinn & Schmalensee August 1997
22. **Same Science, Differing Policies; The Saga of Global Climate Change** *Skolnikoff* August 1997
23. **Uncertainty in the Oceanic Heat and Carbon Uptake and their Impact on Climate Projections**
Sokolov et al. September 1997
24. **A Global Interactive Chemistry and Climate Model**
Wang, Prinn & Sokolov September 1997
25. **Interactions Among Emissions, Atmospheric Chemistry & Climate Change** *Wang & Prinn* Sept. 1997
26. **Necessary Conditions for Stabilization Agreements**
Yang & Jacoby October 1997
27. **Annex I Differentiation Proposals: Implications for Welfare, Equity and Policy** *Reiner & Jacoby* Oct. 1997
28. **Transient Climate Change and Net Ecosystem Production of the Terrestrial Biosphere**
Xiao et al. November 1997
29. **Analysis of CO₂ Emissions from Fossil Fuel in Korea: 1961-1994** *Choi* November 1997
30. **Uncertainty in Future Carbon Emissions: A Preliminary Exploration** *Webster* November 1997
31. **Beyond Emissions Paths: Rethinking the Climate Impacts of Emissions Protocols** *Webster & Reiner* November 1997
32. **Kyoto's Unfinished Business** *Jacoby et al.* June 1998
33. **Economic Development and the Structure of the Demand for Commercial Energy** *Judson et al.* April 1998
34. **Combined Effects of Anthropogenic Emissions and Resultant Climatic Changes on Atmospheric OH** *Wang & Prinn* April 1998
35. **Impact of Emissions, Chemistry, and Climate on Atmospheric Carbon Monoxide** *Wang & Prinn* April 1998
36. **Integrated Global System Model for Climate Policy Assessment: Feedbacks and Sensitivity Studies**
Prinn et al. June 1998
37. **Quantifying the Uncertainty in Climate Predictions**
Webster & Sokolov July 1998
38. **Sequential Climate Decisions Under Uncertainty: An Integrated Framework** *Valverde et al.* September 1998
39. **Uncertainty in Atmospheric CO₂ (Ocean Carbon Cycle Model Analysis)** *Holian* Oct. 1998 (*superseded* by No. 80)
40. **Analysis of Post-Kyoto CO₂ Emissions Trading Using Marginal Abatement Curves** *Ellerman & Decaux* Oct. 1998
41. **The Effects on Developing Countries of the Kyoto Protocol and CO₂ Emissions Trading**
Ellerman et al. November 1998
42. **Obstacles to Global CO₂ Trading: A Familiar Problem**
Ellerman November 1998
43. **The Uses and Misuses of Technology Development as a Component of Climate Policy** *Jacoby* November 1998
44. **Primary Aluminum Production: Climate Policy, Emissions and Costs** *Harnisch et al.* December 1998
45. **Multi-Gas Assessment of the Kyoto Protocol**
Reilly et al. January 1999
46. **From Science to Policy: The Science-Related Politics of Climate Change Policy in the U.S.** *Skolnikoff* January 1999
47. **Constraining Uncertainties in Climate Models Using Climate Change Detection Techniques**
Forest et al. April 1999
48. **Adjusting to Policy Expectations in Climate Change Modeling** *Shackley et al.* May 1999
49. **Toward a Useful Architecture for Climate Change Negotiations** *Jacoby et al.* May 1999
50. **A Study of the Effects of Natural Fertility, Weather and Productive Inputs in Chinese Agriculture**
Eckaus & Tso July 1999
51. **Japanese Nuclear Power and the Kyoto Agreement**
Babiker, Reilly & Ellerman August 1999
52. **Interactive Chemistry and Climate Models in Global Change Studies** *Wang & Prinn* September 1999
53. **Developing Country Effects of Kyoto-Type Emissions Restrictions** *Babiker & Jacoby* October 1999

REPORT SERIES of the **MIT Joint Program on the Science and Policy of Global Change**

54. **Model Estimates of the Mass Balance of the Greenland and Antarctic Ice Sheets** *Bugnion* Oct 1999
55. **Changes in Sea-Level Associated with Modifications of Ice Sheets over 21st Century** *Bugnion* October 1999
56. **The Kyoto Protocol and Developing Countries** *Babiker et al.* October 1999
57. **Can EPA Regulate Greenhouse Gases Before the Senate Ratifies the Kyoto Protocol?** *Bugnion & Reiner* November 1999
58. **Multiple Gas Control Under the Kyoto Agreement** *Reilly, Mayer & Harnisch* March 2000
59. **Supplementarity: An Invitation for Monopsony?** *Ellerman & Sue Wing* April 2000
60. **A Coupled Atmosphere-Ocean Model of Intermediate Complexity** *Kamenkovich et al.* May 2000
61. **Effects of Differentiating Climate Policy by Sector: A U.S. Example** *Babiker et al.* May 2000
62. **Constraining Climate Model Properties Using Optimal Fingerprint Detection Methods** *Forest et al.* May 2000
63. **Linking Local Air Pollution to Global Chemistry and Climate** *Mayer et al.* June 2000
64. **The Effects of Changing Consumption Patterns on the Costs of Emission Restrictions** *Lahiri et al.* Aug 2000
65. **Rethinking the Kyoto Emissions Targets** *Babiker & Eckaus* August 2000
66. **Fair Trade and Harmonization of Climate Change Policies in Europe** *Viguier* September 2000
67. **The Curious Role of "Learning" in Climate Policy: Should We Wait for More Data?** *Webster* October 2000
68. **How to Think About Human Influence on Climate** *Forest, Stone & Jacoby* October 2000
69. **Tradable Permits for Greenhouse Gas Emissions: A primer with reference to Europe** *Ellerman* Nov 2000
70. **Carbon Emissions and The Kyoto Commitment in the European Union** *Viguier et al.* February 2001
71. **The MIT Emissions Prediction and Policy Analysis Model: Revisions, Sensitivities and Results** *Babiker et al.* February 2001 (*superseded* by No. 125)
72. **Cap and Trade Policies in the Presence of Monopoly and Distortionary Taxation** *Fullerton & Metcalf* March '01
73. **Uncertainty Analysis of Global Climate Change Projections** *Webster et al.* Mar. '01 (*superseded* by No. 95)
74. **The Welfare Costs of Hybrid Carbon Policies in the European Union** *Babiker et al.* June 2001
75. **Feedbacks Affecting the Response of the Thermohaline Circulation to Increasing CO₂** *Kamenkovich et al.* July 2001
76. **CO₂ Abatement by Multi-fueled Electric Utilities: An Analysis Based on Japanese Data** *Ellerman & Tsukada* July 2001
77. **Comparing Greenhouse Gases** *Reilly et al.* July 2001
78. **Quantifying Uncertainties in Climate System Properties using Recent Climate Observations** *Forest et al.* July 2001
79. **Uncertainty in Emissions Projections for Climate Models** *Webster et al.* August 2001
80. **Uncertainty in Atmospheric CO₂ Predictions from a Global Ocean Carbon Cycle Model** *Holian et al.* September 2001
81. **A Comparison of the Behavior of AO GCMs in Transient Climate Change Experiments** *Sokolov et al.* December 2001
82. **The Evolution of a Climate Regime: Kyoto to Marrakech** *Babiker, Jacoby & Reiner* February 2002
83. **The "Safety Valve" and Climate Policy** *Jacoby & Ellerman* February 2002
84. **A Modeling Study on the Climate Impacts of Black Carbon Aerosols** *Wang* March 2002
85. **Tax Distortions and Global Climate Policy** *Babiker et al.* May 2002
86. **Incentive-based Approaches for Mitigating Greenhouse Gas Emissions: Issues and Prospects for India** *Gupta* June 2002
87. **Deep-Ocean Heat Uptake in an Ocean GCM with Idealized Geometry** *Huang, Stone & Hill* September 2002
88. **The Deep-Ocean Heat Uptake in Transient Climate Change** *Huang et al.* September 2002
89. **Representing Energy Technologies in Top-down Economic Models using Bottom-up Information** *McFarland et al.* October 2002
90. **Ozone Effects on Net Primary Production and Carbon Sequestration in the U.S. Using a Biogeochemistry Model** *Felzer et al.* November 2002
91. **Exclusionary Manipulation of Carbon Permit Markets: A Laboratory Test** *Carlén* November 2002
92. **An Issue of Permanence: Assessing the Effectiveness of Temporary Carbon Storage** *Herzog et al.* December 2002
93. **Is International Emissions Trading Always Beneficial?** *Babiker et al.* December 2002
94. **Modeling Non-CO₂ Greenhouse Gas Abatement** *Hyman et al.* December 2002
95. **Uncertainty Analysis of Climate Change and Policy Response** *Webster et al.* December 2002
96. **Market Power in International Carbon Emissions Trading: A Laboratory Test** *Carlén* January 2003
97. **Emissions Trading to Reduce Greenhouse Gas Emissions in the United States: The McCain-Lieberman Proposal** *Paltsev et al.* June 2003
98. **Russia's Role in the Kyoto Protocol** *Bernard et al.* Jun '03
99. **Thermohaline Circulation Stability: A Box Model Study** *Lucarini & Stone* June 2003
100. **Absolute vs. Intensity-Based Emissions Caps** *Ellerman & Sue Wing* July 2003
101. **Technology Detail in a Multi-Sector CGE Model: Transport Under Climate Policy** *Schafer & Jacoby* July 2003
102. **Induced Technical Change and the Cost of Climate Policy** *Sue Wing* September 2003
103. **Past and Future Effects of Ozone on Net Primary Production and Carbon Sequestration Using a Global Biogeochemical Model** *Felzer et al.* (revised) January 2004
104. **A Modeling Analysis of Methane Exchanges Between Alaskan Ecosystems and the Atmosphere** *Zhuang et al.* November 2003

REPORT SERIES of the MIT Joint Program on the Science and Policy of Global Change

105. **Analysis of Strategies of Companies under Carbon Constraint** Hashimoto January 2004
106. **Climate Prediction: The Limits of Ocean Models** Stone February 2004
107. **Informing Climate Policy Given Incommensurable Benefits Estimates** Jacoby February 2004
108. **Methane Fluxes Between Terrestrial Ecosystems and the Atmosphere at High Latitudes During the Past Century** Zhuang et al. March 2004
109. **Sensitivity of Climate to Diapycnal Diffusivity in the Ocean** Dalan et al. May 2004
110. **Stabilization and Global Climate Policy** Sarofim et al. July 2004
111. **Technology and Technical Change in the MIT EPPA Model** Jacoby et al. July 2004
112. **The Cost of Kyoto Protocol Targets: The Case of Japan** Paltsev et al. July 2004
113. **Economic Benefits of Air Pollution Regulation in the USA: An Integrated Approach** Yang et al. (revised) Jan. 2005
114. **The Role of Non-CO₂ Greenhouse Gases in Climate Policy: Analysis Using the MIT IGSM** Reilly et al. Aug. '04
115. **Future U.S. Energy Security Concerns** Deutch Sep. '04
116. **Explaining Long-Run Changes in the Energy Intensity of the U.S. Economy** Sue Wing Sept. 2004
117. **Modeling the Transport Sector: The Role of Existing Fuel Taxes in Climate Policy** Paltsev et al. November 2004
118. **Effects of Air Pollution Control on Climate** Prinn et al. January 2005
119. **Does Model Sensitivity to Changes in CO₂ Provide a Measure of Sensitivity to the Forcing of Different Nature?** Sokolov March 2005
120. **What Should the Government Do To Encourage Technical Change in the Energy Sector?** Deutch May '05
121. **Climate Change Taxes and Energy Efficiency in Japan** Kasahara et al. May 2005
122. **A 3D Ocean-Seaice-Carbon Cycle Model and its Coupling to a 2D Atmospheric Model: Uses in Climate Change Studies** Dutkiewicz et al. (revised) November 2005
123. **Simulating the Spatial Distribution of Population and Emissions to 2100** Asadoorian May 2005
124. **MIT Integrated Global System Model (IGSM) Version 2: Model Description and Baseline Evaluation** Sokolov et al. July 2005
125. **The MIT Emissions Prediction and Policy Analysis (EPPA) Model: Version 4** Paltsev et al. August 2005
126. **Estimated PDFs of Climate System Properties Including Natural and Anthropogenic Forcings** Forest et al. September 2005
127. **An Analysis of the European Emission Trading Scheme** Reilly & Paltsev October 2005
128. **Evaluating the Use of Ocean Models of Different Complexity in Climate Change Studies** Sokolov et al. November 2005
129. **Future Carbon Regulations and Current Investments in Alternative Coal-Fired Power Plant Designs** Sekar et al. December 2005
130. **Absolute vs. Intensity Limits for CO₂ Emission Control: Performance Under Uncertainty** Sue Wing et al. January 2006
131. **The Economic Impacts of Climate Change: Evidence from Agricultural Profits and Random Fluctuations in Weather** Deschenes & Greenstone January 2006
132. **The Value of Emissions Trading** Webster et al. Feb. 2006
133. **Estimating Probability Distributions from Complex Models with Bifurcations: The Case of Ocean Circulation Collapse** Webster et al. March 2006
134. **Directed Technical Change and Climate Policy** Otto et al. April 2006
135. **Modeling Climate Feedbacks to Energy Demand: The Case of China** Asadoorian et al. June 2006
136. **Bringing Transportation into a Cap-and-Trade Regime** Ellerman, Jacoby & Zimmerman June 2006
137. **Unemployment Effects of Climate Policy** Babiker & Eckaus July 2006
138. **Energy Conservation in the United States: Understanding its Role in Climate Policy** Metcalf Aug. '06
139. **Directed Technical Change and the Adoption of CO₂ Abatement Technology: The Case of CO₂ Capture and Storage** Otto & Reilly August 2006
140. **The Allocation of European Union Allowances: Lessons, Unifying Themes and General Principles** Buchner et al. October 2006
141. **Over-Allocation or Abatement? A preliminary analysis of the EU ETS based on the 2006 emissions data** Ellerman & Buchner December 2006
142. **Federal Tax Policy Towards Energy** Metcalf Jan. 2007
143. **Technical Change, Investment and Energy Intensity** Kratena March 2007
144. **Heavier Crude, Changing Demand for Petroleum Fuels, Regional Climate Policy, and the Location of Upgrading Capacity** Reilly et al. April 2007
145. **Biomass Energy and Competition for Land** Reilly & Paltsev April 2007
146. **Assessment of U.S. Cap-and-Trade Proposals** Paltsev et al. April 2007
147. **A Global Land System Framework for Integrated Climate-Change Assessments** Schlosser et al. May 2007
148. **Relative Roles of Climate Sensitivity and Forcing in Defining the Ocean Circulation Response to Climate Change** Scott et al. May 2007
149. **Global Economic Effects of Changes in Crops, Pasture, and Forests due to Changing Climate, CO₂ and Ozone** Reilly et al. May 2007
150. **U.S. GHG Cap-and-Trade Proposals: Application of a Forward-Looking Computable General Equilibrium Model** Gurgel et al. June 2007
151. **Consequences of Considering Carbon/Nitrogen Interactions on the Feedbacks between Climate and the Terrestrial Carbon Cycle** Sokolov et al. June 2007
152. **Energy Scenarios for East Asia: 2005-2025** Paltsev & Reilly July 2007
153. **Climate Change, Mortality, and Adaptation: Evidence from Annual Fluctuations in Weather in the U.S.** Deschênes & Greenstone August 2007

Contact the Joint Program Office to request a copy. The Report Series is distributed at no charge.

REPORT SERIES of the MIT Joint Program on the Science and Policy of Global Change

- 154. Modeling the Prospects for Hydrogen Powered Transportation Through 2100** *Sandoval et al.* February 2008
- 155. Potential Land Use Implications of a Global Biofuels Industry** *Gurgel et al.* March 2008
- 156. Estimating the Economic Cost of Sea-Level Rise** *Sugiyama et al.* April 2008
- 157. Constraining Climate Model Parameters from Observed 20th Century Changes** *Forest et al.* April 2008
- 158. Analysis of the Coal Sector under Carbon Constraints** *McFarland et al.* April 2008
- 159. Impact of Sulfur and Carbonaceous Emissions from International Shipping on Aerosol Distributions and Direct Radiative Forcing** *Wang & Kim* April 2008
- 160. Analysis of U.S. Greenhouse Gas Tax Proposals** *Metcalf et al.* April 2008
- 161. A Forward Looking Version of the MIT Emissions Prediction and Policy Analysis (EPPA) Model** *Babiker et al.* May 2008
- 162. The European Carbon Market in Action: Lessons from the first trading period** Interim Report *Convery, Ellerman, & de Perthuis* June 2008
- 163. The Influence on Climate Change of Differing Scenarios for Future Development Analyzed Using the MIT Integrated Global System Model** *Prinn et al.* September 2008
- 164. Marginal Abatement Costs and Marginal Welfare Costs for Greenhouse Gas Emissions Reductions: Results from the EPPA Model** *Holak et al.* November 2008
- 165. Uncertainty in Greenhouse Emissions and Costs of Atmospheric Stabilization** *Webster et al.* November 2008
- 166. Sensitivity of Climate Change Projections to Uncertainties in the Estimates of Observed Changes in Deep-Ocean Heat Content** *Sokolov et al.* November 2008
- 167. Sharing the Burden of GHG Reductions** *Jacoby et al.* November 2008
- 168. Unintended Environmental Consequences of a Global Biofuels Program** *Melillo et al.* January 2009
- 169. Probabilistic Forecast for 21st Century Climate Based on Uncertainties in Emissions (without Policy) and Climate Parameters** *Sokolov et al.* January 2009
- 170. The EU's Emissions Trading Scheme: A Proto-type Global System?** *Ellerman* February 2009
- 171. Designing a U.S. Market for CO₂** *Parsons et al.* February 2009
- 172. Prospects for Plug-in Hybrid Electric Vehicles in the United States & Japan: A General Equilibrium Analysis** *Karplus et al.* April 2009
- 173. The Cost of Climate Policy in the United States** *Paltsev et al.* April 2009
- 174. A Semi-Empirical Representation of the Temporal Variation of Total Greenhouse Gas Levels Expressed as Equivalent Levels of Carbon Dioxide** *Huang et al.* June 2009
- 175. Potential Climatic Impacts and Reliability of Very Large Scale Wind Farms** *Wang & Prinn* June 2009
- 176. Biofuels, Climate Policy and the European Vehicle Fleet** *Gitiaux et al.* August 2009
- 177. Global Health and Economic Impacts of Future Ozone Pollution** *Selin et al.* August 2009
- 178. Measuring Welfare Loss Caused by Air Pollution in Europe: A CGE Analysis** *Nam et al.* August 2009
- 179. Assessing Evapotranspiration Estimates from the Global Soil Wetness Project Phase 2 (GSWP-2) Simulations** *Schlosser and Gao* September 2009
- 180. Analysis of Climate Policy Targets under Uncertainty** *Webster et al.* September 2009
- 181. Development of a Fast and Detailed Model of Urban-Scale Chemical and Physical Processing** *Cohen & Prinn* October 2009
- 182. Distributional Impacts of a U.S. Greenhouse Gas Policy: A General Equilibrium Analysis of Carbon Pricing** *Rausch et al.* November 2009
- 183. Canada's Bitumen Industry Under CO₂ Constraints** *Chan et al.* January 2010
- 184. Will Border Carbon Adjustments Work?** *Winchester et al.* February 2010
- 185. Distributional Implications of Alternative U.S. Greenhouse Gas Control Measures** *Rausch et al.* June 2010
- 186. The Future of U.S. Natural Gas Production, Use, and Trade** *Paltsev et al.* June 2010
- 187. Combining a Renewable Portfolio Standard with a Cap-and-Trade Policy: A General Equilibrium Analysis** *Morris et al.* July 2010
- 188. On the Correlation between Forcing and Climate Sensitivity** *Sokolov* August 2010
- 189. Modeling the Global Water Resource System in an Integrated Assessment Modeling Framework: IGSM-WRS** *Strzepek et al.* September 2010
- 190. Climatology and Trends in the Forcing of the Stratospheric Zonal-Mean Flow** *Monier and Weare* January 2011
- 191. Climatology and Trends in the Forcing of the Stratospheric Ozone Transport** *Monier and Weare* January 2011
- 192. The Impact of Border Carbon Adjustments under Alternative Producer Responses** *Winchester* February 2011
- 193. What to Expect from Sectoral Trading: A U.S.-China Example** *Gavard et al.* February 2011
- 194. General Equilibrium, Electricity Generation Technologies and the Cost of Carbon Abatement** *Lanz and Rausch* February 2011
- 195. A Method for Calculating Reference Evapotranspiration on Daily Time Scales** *Farmer et al.* February 2011
- 196. Health Damages from Air Pollution in China** *Matus et al.* March 2011
- 197. The Prospects for Coal-to-Liquid Conversion: A General Equilibrium Analysis** *Chen et al.* May 2011

REPORT SERIES of the **MIT Joint Program on the Science and Policy of Global Change**

- 198. The Impact of Climate Policy on U.S. Aviation**
Winchester et al. May 2011
- 199. Future Yield Growth: What Evidence from Historical Data**
Gitiaux et al. May 2011
- 200. A Strategy for a Global Observing System for Verification of National Greenhouse Gas Emissions**
Prinn et al. June 2011
- 201. Russia's Natural Gas Export Potential up to 2050**
Paltsev July 2011
- 202. Distributional Impacts of Carbon Pricing: A General Equilibrium Approach with Micro-Data for Households**
Rausch et al. July 2011
- 203. Global Aerosol Health Impacts: Quantifying Uncertainties**
Selin et al. August 2011
- 204. Implementation of a Cloud Radiative Adjustment Method to Change the Climate Sensitivity of CAM3**
Sokolov and Monier September 2011
- 205. Quantifying the Likelihood of Regional Climate Change: A Hybridized Approach**
Schlosser et al. Oct 2011
- 206. Process Modeling of Global Soil Nitrous Oxide Emissions**
Saikawa et al. October 2011
- 207. The Influence of Shale Gas on U.S. Energy and Environmental Policy**
Jacoby et al. November 2011