

P A N S L A B C O N S T R U C T I O N F O R  
I N T E G R A T E D M E C H A N I C A L S Y S T E M S

Submitted in partial fulfillment of the requirements  
for the degree of Master in Architecture  
at the  
Massachusetts Institute of Technology

---

Rainer F. Schildknecht

Diplomingenieur  
Technische Hochschule Munchen, 1964

---

Professor Eduardo F. Catalano  
Department of Architecture  
Massachusetts Institute of Technology

August 1966

M. I. T. Graduate House  
Cambridge, Massachusetts  
August 1966

Lawrence B. Anderson, Dean  
School of Architecture and Planning  
Massachusetts Institute of Technology

Dear Dean Anderson:

In partial fulfillment of the requirements for the  
degree of Master in Architecture, I hereby submit this  
thesis entitled "Pan Slab Construction for Integrated  
Mechanical Systems."

Respectfully,

Rainer F. Schildknecht

A C K N O W L E D G M E N T S

THESIS SUPERVISOR

Eduardo F. Catalano

STRUCTURES

Waclaw Zalewsky

MECHANICAL

Sidney Greenleaf

## T A B L E O F C O N T E N T S

I.	INTRODUCTION	5
II.	AIM OF THE THESIS	6
III.	THE STRUCTURAL SYSTEM	
	A. Principles of concrete floor construction	8
	B. Pan slab with perforated joists	9
	C. The structure and the module	10
IV.	THE AIR CONDITIONING SYSTEM	
	A. Velocity	11
	B. Control	11
	C. Horizontal ductwork	11
	D. The perimeter zone	12
	E. Calculation of the duct sizes	12
V.	PIPE SYSTEMS	13
VI.	CASTING OF MODEL	14

## I. I N T R O D U C T I O N

The following thesis relates to multistory buildings two to eight stories high and to building types such as buildings for educational facilities and large administration buildings.

The large institutions of our mass society need buildings which are able to serve an increasingly large number of people. There is a need for spaces with different properties used for different activities. There is a need to change room sizes and to change the acoustical, mechanical and visual properties of spaces within the building.

The question arises, what are the unchanging elements of a building which have to be integrated in any part of the building. Unchanging are the structural elements of a building and the presence of spaces for services such as air-conditioning, piping and electrical supply, the spaces for circulation, such as stairs and elevators, and spaces for unchanging needs, such as toilets.

## I I. A I M O F T H E T H E S I S

The aim of the thesis was the design of the architecturally most important unchanging elements for buildings as described in the introduction, the design of the structural system and the system of supply and return ducts for air-conditioning, and the design of a pipe system for sinks.

At the early stage of the investigation a decision was made to use a two-way structural system, which means that the supports of the floor structure are equidistant from each other in two directions and girders spanning from each support to the next four supports.

A two-way structural system offers a greater flexibility in the location of large spaces, which can extend free of supports in two directions.

It was thought of using precast concrete elements for the two-way floor construction. However, as it is possible to transport structural pieces of large sizes only when they are small in one dimension, the precast members for two-way construction would either be small and long elements -- which is against the principle of two-way construction -- or the precast members would be small square-shaped elements, which would mean that a very large number of elements would have to be jointed together. Since all the joints would have to transmit structural forces, such a method of construction seems to need extreme exactness, which is hardly feasible for a widely

usable standard construction.

These considerations led to the choice of a cast-in-place structure.

### I I I. T H E S T R U C T U R A L S Y S T E M

#### A. Principles of concrete floor construction.

The common concrete floor constructions follow the principle of the reduction of dead load by avoiding unnecessary masses of concrete. A flat slab is a common concrete floor construction for spans up to a 24 foot square bay. The structural depth is not more than 10 inches.

A greater span would make a greater structural depth necessary. A flat slab would become unnecessarily heavy. A reduction of the amount of concrete in the tension zone makes the structure more efficient. The result is a pan slab.

The main advantage of concrete, when it is cast in place, is the lack of joints and their tolerances. No welding of joints, grouting or topping is necessary. The structure has continuity in all directions. Neither the continuity of the floor nor the continuity of the columns is interrupted.

An efficient floor construction has continuity between the beams and the floor slab, so that the floor slab at the top of the structure takes the compression. The tension zone has to have a certain distance from the compression zone to give the structure rigidity. Tension and compression zone have to be connected by diagonal steel reinforcement to take the shear forces.



## B. Pan slab with perforated joists

The considerations about the principles of concrete floor construction led me to the structure of this thesis, a pan slab with perforated joists.

It is logical to reduce the dead load by perforating the joists when the structure exceeds the depth of about 20 inches.

The bay size is 45 by 45 feet. The structural depth is 30 inches.

Theoretically this structural depth would be enough to span 60 by 60 feet. In any air-conditioned building, the overall depth ceiling-floor results from the structural depth plus the space for the mechanical installations.

The minimum structural depth would be 24 inches. The minimum space needed for ducts and pipes is 18 inches in this mechanical system. The minimum space needed for lighting and diffusers is 6 inches.

24 plus 18 plus 6 inches equals 48 inches or 4 feet overall floor depth. The pan slab system with perforated joists and integrated mechanical system has a depth of 30 inches or  $2\frac{1}{2}$  feet, which is  $1\frac{1}{2}$  feet less. 8 times  $1\frac{1}{2}$  feet is the height of one story. That means that a 9 story high building using the system of this thesis has the same volume as a conventional 8 story high building.

### C. The structure and the module

The joists which connect the columns need 5 times more steel than the joists in between. When the ceiling is flush, the main joists, of which there are only four on each bay, have to be broader in dimension or the joists in between, of which there are 14, are oversized.

A structural module of 5 feet was chosen according to small room sizes. It was decided to use the same pan size all over. This allows the use of only one size of ceiling element, which contains acoustical material, lighting fixture and diffuser.

Wherever the partitions cross the main joists there have to be "between elements" in the partitions or different panel sizes.

The decision to use the same pan size all over was made since it was not possible to have a smaller space between the joists in the area where the attenuators are located and the horizontal pipes come together.

## I V. T H E A I R C O N D I T I O N I N G S Y S T E M

### A. Velocity

The air-conditioning system is a single duct system. The velocity is 4000 feet per minute in the vertical supply and return ducts. After going through an attenuator, the air runs with a velocity of 1200 feet per minute in horizontal ducts. The high velocity in the vertical ducts reduces their size considerably.

### B. Control

Every half bay, an area of 1013 square feet, can be controlled individually. An attenuator with constant volume control regulates the volume before it goes to the diffusers. The attenuators are located in the first ceiling modules around the support.

### C. Horizontal ductwork

Generally, supply or return is on alternate modules. Since the joists are perforated in two directions, the system allows the installation of diffusers for supply and return registers on every module. Although not often needed, this is an advantage when small rooms have to be equipped with a proper number of diffusers and return registers. Any crossing of ducts is avoided, which means that the floor depth is dimensioned to the general case and not to accidental crossings of ducts.

#### D. The perimeter zone

The perimeter zone of a building is next to the glass walls induction units, which are served by the same air supply system plus hot and cold water supply.

#### E. Calculation of the duct sizes

Vertical ducts: velocity 4000 feet per minute. One duct serves one half bay on each story.

bay size 45' square

room height 10'

6 air changes per hour

$$\frac{1}{2} \times \frac{45 \times 45 \times 10 \times 6}{60} = 1008 \text{ cf/m}$$

5 stories

$$5 \times 1008 \text{ cf/m} = 5040 \text{ cf/m}$$

The resulting duct size taken from the 'Trane' ductulator is 11" x 18" or 15" x 15".

Horizontal ducts: velocity 1200 feet per minute.

Maximum area served:  $\frac{1}{2}$  bay

Needed: 1008 cf/m

The resulting duct size taken from the 'Trane' ductulator is 12" diameter for a round duct.

## V. P I P E S Y S T E M S

Between ducts and floor slab remains a space of 7", which allows the horizontal passage of pipes for sinks - drain, vent, warm water, cold water.

The installation of sinks and lavatories is possible in any location of the bay. The pipes run horizontally in the structure and are fitted to the vertical pipes in the supports.

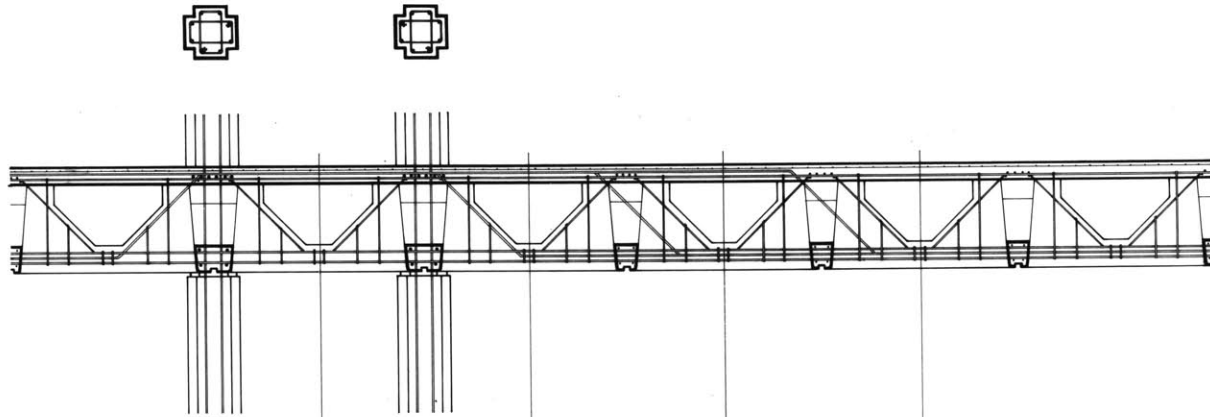
## V I. C A S T I N G   O F   M O D E L

The photographs at the end of the report show a model which was casted in the scale: 1 inch equals 1 foot.

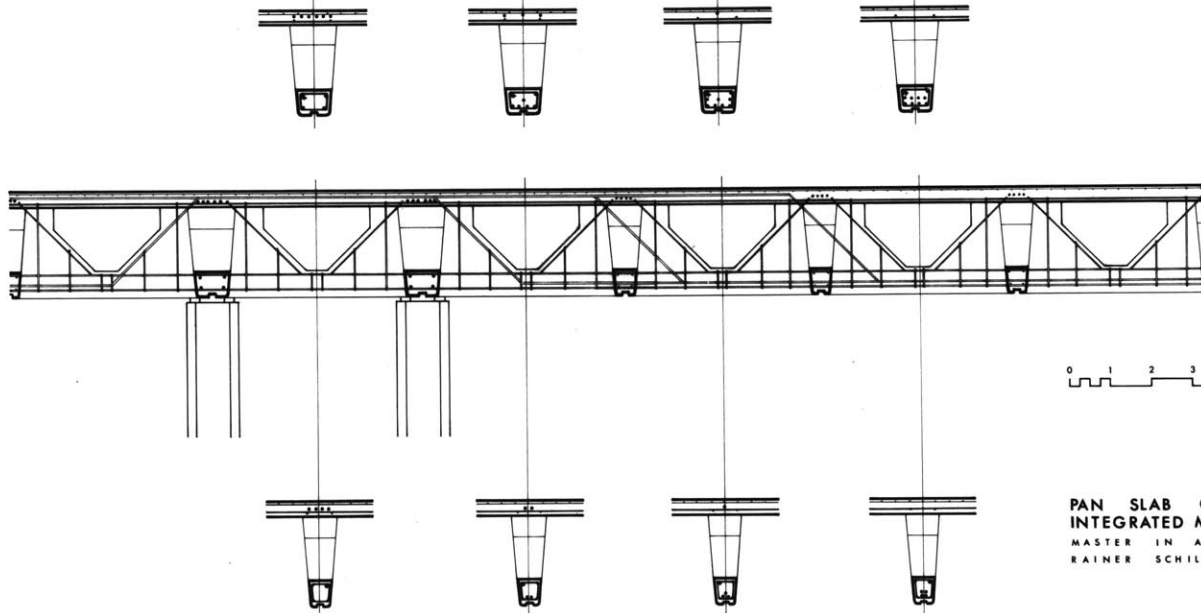
The first step was to build the formwork. PVC - Pans were vacuum-formed over a steel dime. Some of the photographs show this process. The steel dime is standing on a "table." Above the "table" a flat PVC sheet is clamped between two metal frames. The PVC is heated by a heating plate above. When the PVC has a certain softness, the table is moved up against the PVC and the air is sucked out between the table and the PVC. The atmospheric pressure forms the PVC around the dime.

The finished pans were glued on a large PVC sheet and Poliyurethane pieces were laid between the pans for getting the perforations in the joists. Then the model was cast with Hydrocol. After 6 hours of drying the formwork was removed.

COLUMNS  
GIRDER

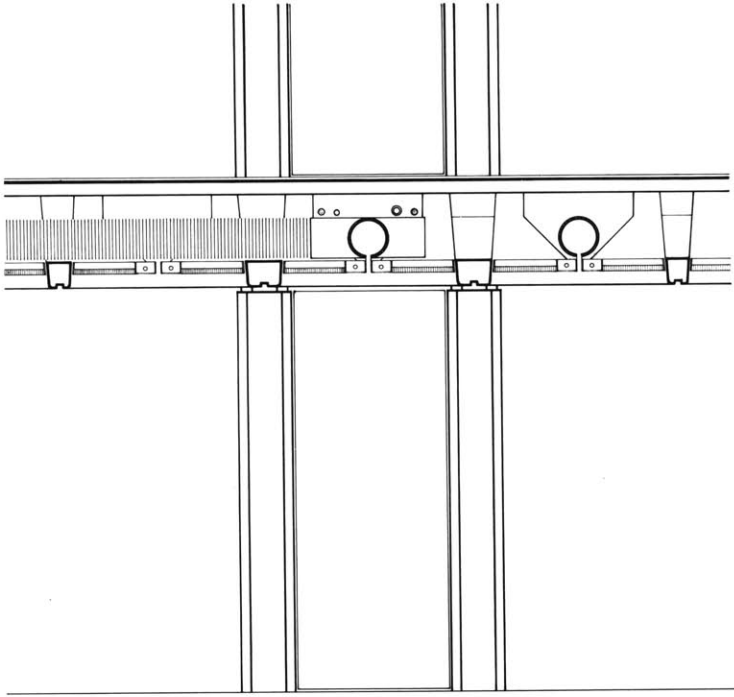


BEAM

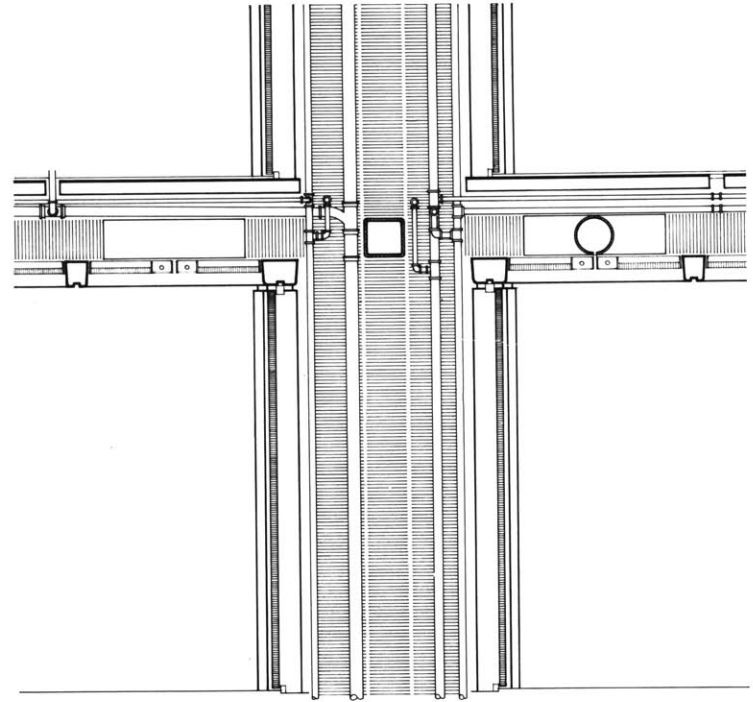


0 1 2 3 4 5 FEET

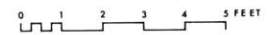
PAN SLAB CONSTRUCTION FOR  
INTEGRATED MECHANICAL SYSTEMS  
MASTER IN ARCHITECTURE THESIS  
RAINER SCHILDKNECHT M.I.T. 1966



ELEVATION OF COLUMN, SECTION OF SLAB

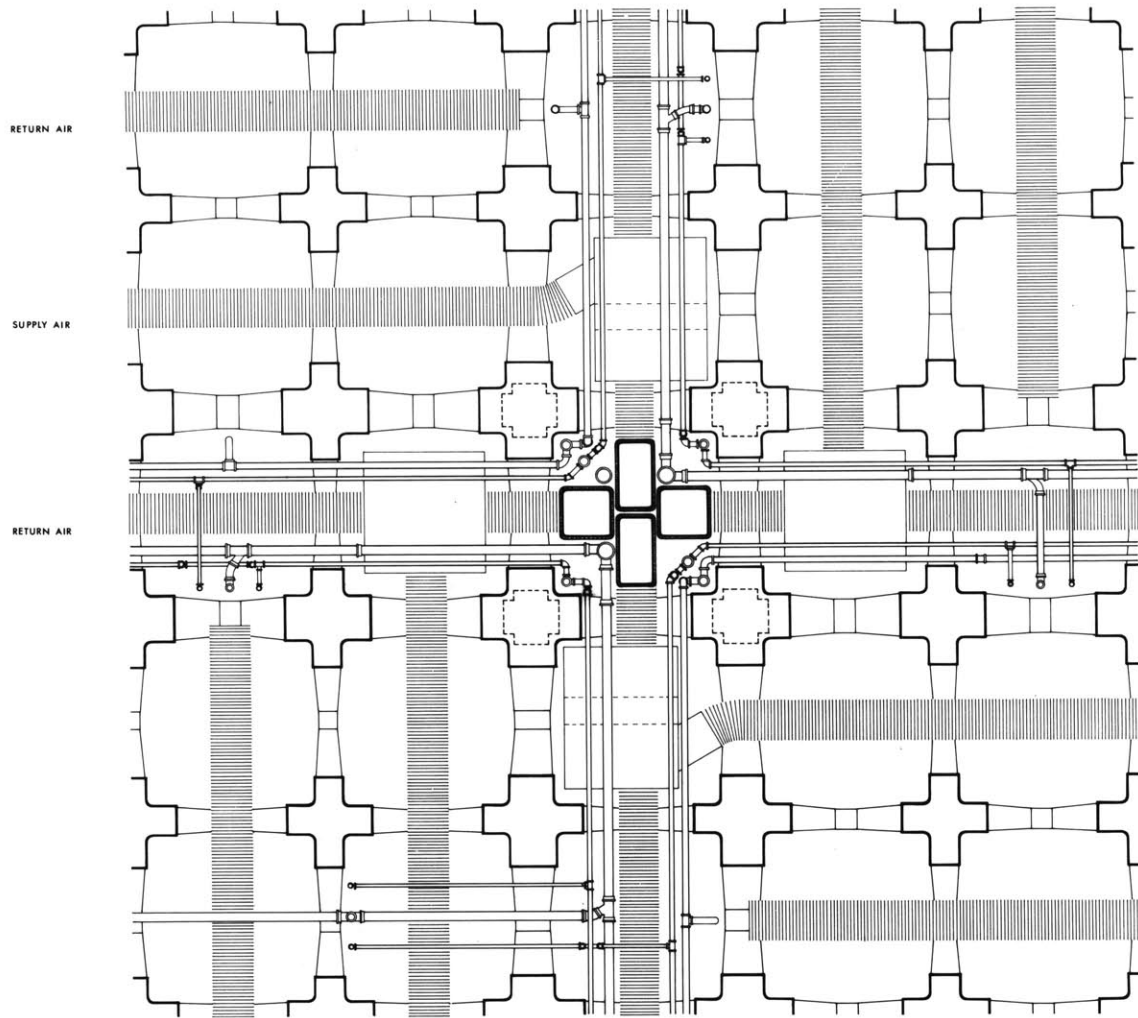


SECTION OF COLUMN

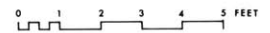


PAN SLAB CONSTRUCTION FOR  
INTEGRATED MECHANICAL SYSTEMS  
MASTER IN ARCHITECTURE THESIS  
RAINER SCHILDKNECHT M.I.T. 1966





HORIZONTAL SECTION OF SLAB AND INTEGRATED MECHANICAL SYSTEMS



PAN SLAB CONSTRUCTION FOR INTEGRATED MECHANICAL SYSTEMS  
 MASTER IN ARCHITECTURE THESIS  
 RAINER SCHILDKNECHT M.I.T. 1966

