

MIT Open Access Articles

*Measurement of diffractive dissociation
cross sections in pp collisions at $\sqrt{s} = 7$ TeV*

The MIT Faculty has made this article openly available. *Please share*
how this access benefits you. Your story matters.

Citation: Khachatryan, V., A. M. Sirunyan, A. Tumasyan, W. Adam, T. Bergauer, M. Dragicevic, J. Ero, et al. "Measurement of Diffractive Dissociation Cross Sections in pp Collisions at $\sqrt{s} = 7$ TeV." Phys. Rev. D 92, no. 1 (July 2015). © 2015 CERN, for the CMS Collaboration

As Published: <http://dx.doi.org/10.1103/PhysRevD.92.012003>

Publisher: American Physical Society

Persistent URL: <http://hdl.handle.net/1721.1/98520>

Version: Final published version: final published article, as it appeared in a journal, conference proceedings, or other formally published context

Terms of Use: Article is made available in accordance with the publisher's policy and may be subject to US copyright law. Please refer to the publisher's site for terms of use.



Measurement of diffractive dissociation cross sections in pp collisions at $\sqrt{s} = 7$ TeV

V. Khachatryan *et al.**

(CMS Collaboration)

(Received 30 March 2015; published 6 July 2015)

Measurements of diffractive dissociation cross sections in pp collisions at $\sqrt{s} = 7$ TeV are presented in kinematic regions defined by the masses M_X and M_Y of the two final-state hadronic systems separated by the largest rapidity gap in the event. Differential cross sections are measured as a function of $\xi_X = M_X^2/s$ in the region $-5.5 < \log_{10}\xi_X < -2.5$, for $\log_{10}M_Y < 0.5$, dominated by single dissociation (SD), and $0.5 < \log_{10}M_Y < 1.1$, dominated by double dissociation (DD), where M_X and M_Y are given in GeV. The inclusive pp cross section is also measured as a function of the width of the central pseudorapidity gap $\Delta\eta$ for $\Delta\eta > 3$, $\log_{10}M_X > 1.1$, and $\log_{10}M_Y > 1.1$, a region dominated by DD. The cross sections integrated over these regions are found to be, respectively, $2.99 \pm 0.02(\text{stat})^{+0.32}_{-0.29}(\text{syst})$ mb, $1.18 \pm 0.02(\text{stat}) \pm 0.13(\text{syst})$ mb, and $0.58 \pm 0.01(\text{stat})^{+0.13}_{-0.11}(\text{syst})$ mb, and are used to extract extrapolated total SD and DD cross sections. In addition, the inclusive differential cross section, $d\sigma/d\Delta\eta^F$, for events with a pseudorapidity gap adjacent to the edge of the detector, is measured over $\Delta\eta^F = 8.4$ units of pseudorapidity. The results are compared to those of other experiments and to theoretical predictions and found compatible with slowly rising diffractive cross sections as a function of center-of-mass energy.

DOI: 10.1103/PhysRevD.92.012003

PACS numbers: 13.85.Ni

I. INTRODUCTION

A significant fraction ($\approx 25\%$) of the total inelastic proton-proton cross section at high energies can be attributed to diffractive interactions, characterized by the presence of at least one nonexponentially suppressed large rapidity gap (LRG), i.e., a region of pseudorapidity η devoid of particles, where for a particle moving at a polar angle θ with respect to the beam, $\eta = -\ln[\tan(\theta/2)]$. If this η region is adjacent to the diffractively scattered proton, it is called a forward pseudorapidity gap. In hadronic interactions an LRG is presumed to be mediated by a color-singlet exchange carrying the vacuum quantum numbers, commonly referred to as Pomeron exchange. Figure 1 defines the main types of diffractive processes: single dissociation (SD), double dissociation (DD), and central diffraction (CD).

Inclusive diffractive cross sections cannot be calculated within perturbative quantum chromodynamics and are commonly described by models based on Regge theory (see e.g. [1] and references therein). The predictions of these models generally differ when extrapolated from the Tevatron center-of-mass energies of $\sqrt{s} \leq 1.96$ TeV to LHC energies. Therefore, measurements of diffractive cross sections at 7 TeV provide a valuable input for

understanding diffraction and improving its theoretical description. They are also crucial for the proper modeling of the full final state of hadronic interactions in event generators, and can help to improve the simulation of the underlying event, as well as of the total inelastic cross section.

The DD cross section has been recently measured at $\sqrt{s} = 7$ TeV by the TOTEM Collaboration [2], for events in which both dissociated-proton masses are below ~ 12 GeV. Other measurements of diffractive cross sections at the LHC, with higher dissociation masses, have either a limited precision [3] or no separation between SD and DD events [4]. In this paper, we present the first CMS measurement of inclusive diffractive cross sections at $\sqrt{s} = 7$ TeV. This measurement is based on the presence of a forward LRG, with SD- and DD-dominated event samples separated by using the CASTOR calorimeter [5], covering the very forward region, $-6.6 < \eta < -5.2$. A data sample with a central LRG, in which DD dominates, is also used. In addition, the inclusive differential cross section, $d\sigma/d\Delta\eta^F$, for events with a pseudorapidity gap adjacent to the edge of the detector, is measured over $\Delta\eta^F = 8.4$ units of pseudorapidity, and compared to a similar ATLAS measurement [4]. The results presented here are based on the first CMS data collected at $\sqrt{s} = 7$ TeV during the 2010 LHC commissioning period, when the probability of overlapping pp interactions in the same bunch crossing (pileup), which may spoil the detection of the gap, was low.

The paper is organized into 11 sections and two appendices. The CMS detector is described in Sec. II. Section III presents the Monte Carlo (MC) simulations used

*Full author list given at the end of the article.

Published by the American Physical Society under the terms of the Creative Commons Attribution 3.0 License. Further distribution of this work must maintain attribution to the author(s) and the published article's title, journal citation, and DOI.

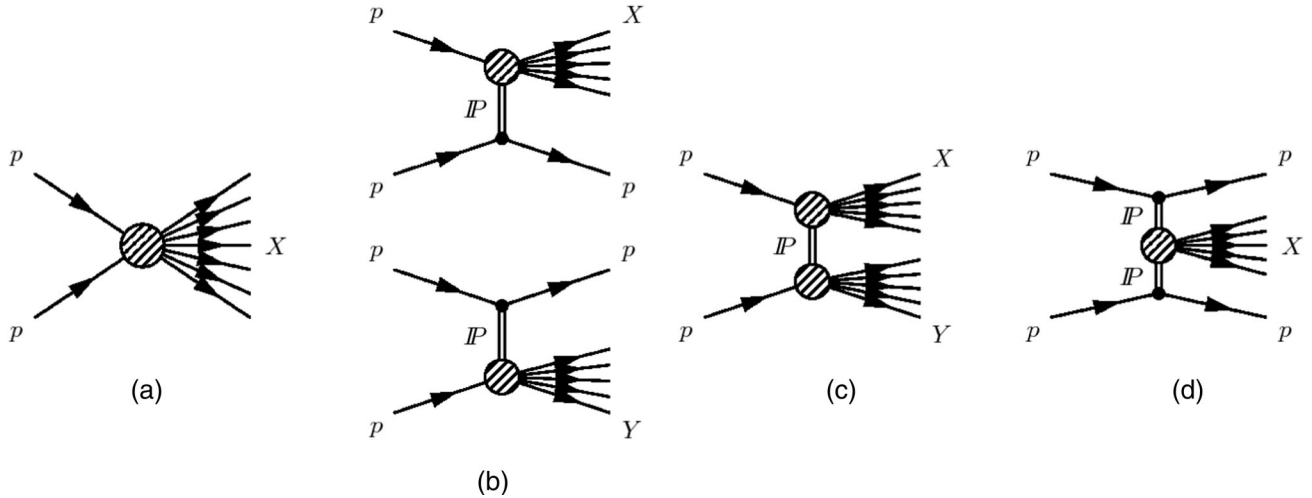


FIG. 1. Schematic diagrams of (a) nondiffractive, $pp \rightarrow X$, and diffractive processes with (b) single dissociation, $pp \rightarrow Xp$ or $pp \rightarrow pY$, (c) double dissociation, $pp \rightarrow XY$, and (d) central diffraction, $pp \rightarrow pXp$; $X(Y)$ represents a dissociated proton or a centrally produced hadronic system.

in the analysis. The event selection and the diffractive event topologies used to measure the cross sections are discussed in Secs. IV and V, respectively. Sections VI, VII, and VIII present the measurement of the forward-gap and central-gap differential cross sections, and the integrated cross sections, respectively. All cross sections are extracted within the detector acceptance and with minimal model-dependent systematic uncertainties. The extrapolation of the measured cross sections to the low-mass regions is discussed in Sec. IX. Section X presents the measurement of the pseudorapidity gap cross section and its comparison to the ATLAS result [4]. The systematic uncertainties for all the measurements are discussed in Sec. XI. A summary is given in Sec. XII. Appendixes A and B present additional comparisons between the diffractive MC models used.

II. THE CMS DETECTOR

A detailed description of the CMS detector, together with a definition of the coordinate system used and the relevant kinematic variables, can be found in Ref. [6]. The central feature of the apparatus is a superconducting solenoid of 6 m internal diameter, providing a 3.8 T axial field. Within the field volume are located a silicon pixel and strip tracker, a crystal electromagnetic calorimeter, and a brass/scintillator hadron calorimeter. Muons are measured in gas-ionization detectors embedded in the steel flux-return yoke of the magnet. The calorimeter cells are grouped in projective towers, of granularity $\Delta\eta \times \Delta\phi = 0.087 \times 0.087$ at central rapidities and 0.175×0.175 at forward rapidities. In addition to the barrel and end-cap detectors, CMS has extensive forward calorimetry. The forward component of the hadron calorimeter, HF ($2.9 < |\eta| < 5.2$), consists of steel absorbers with embedded radiation-hard quartz fibers, providing fast collection of Cherenkov light. The very

forward angles are covered at one end of CMS ($-6.6 < \eta < -5.2$) by the CASTOR calorimeter [5], made of quartz plates embedded in tungsten absorbers, segmented in 16 ϕ sectors and 14 z modules.

Two elements of the CMS monitoring system, the beam scintillator counters (BSC) and the beam pickup timing experiment (BPTX) devices, are used to trigger the CMS readout. The two BSC are located at a distance of ± 10.86 m from the nominal interaction point (IP) and are sensitive in the $|\eta|$ range 3.23 to 4.65. Each BSC consists of 16 scintillator tiles. The BSC elements have a time resolution of 3 ns and an average minimum ionizing particle detection efficiency of 96.3%. The two BPTX devices, located around the beam pipe at a distance of 175 m from the IP on either side, are designed to provide precise information on the bunch structure and timing of the incoming beams, with better than 0.2 ns time resolution.

III. MONTE CARLO SIMULATION

Monte Carlo simulations are used to correct the measured distributions for the geometrical acceptance and reconstruction efficiency of the CMS detector, as well as for migrations from true to reconstructed values in the distributions of kinematic variables. We use PYTHIA 8.165 [7,8] to generate samples of inelastic events. We compare the detector-level data distributions to the PYTHIA 8 4C [8] and PYTHIA 8 MBR (minimum bias Rockefeller) [9] simulations and extract integrated cross sections using PYTHIA 8 MBR.

Diffractive events in the PYTHIA 8 4C simulation are generated according to the Schuler-Sjöstrand model implemented in PYTHIA 6 [7]. The 4C tune [8] includes a downward scaling of the Schuler-Sjöstrand SD and DD cross sections at $\sqrt{s} = 7$ TeV by 10% and 12%, respectively.

The PYTHIA 8 MBR generator predicts the energy dependence of the total, elastic, and inelastic pp cross sections, and fully simulates the main diffractive components of the inelastic cross section: SD, DD and CD. The diffractive-event generation in PYTHIA 8 MBR is based on a phenomenological renormalized-Regge-theory model [10,11], which is unitarized by interpreting the Pomeron flux as the probability for forming a diffractive rapidity gap. The model was originally developed for the CDF experiment at the Tevatron and has been successfully tested with the CDF results on diffraction. The PYTHIA 8 MBR simulation assumes a linear parametrization of the Pomeron trajectory, $\alpha(t) = 1 + \varepsilon + \alpha' t$, where t is the square of the four-momentum transfer between the two incident protons. We use $\alpha' = 0.25 \text{ GeV}^{-2}$, and $\varepsilon = 0.08$ [12,13] or $\varepsilon = 0.104$ [14,15], to account for the possible energy dependence of ε in the range of diffractive masses accessible in this analysis. We find that the simulation with $\varepsilon = 0.08$ gives a good description of the data. Scaling the DD cross section downwards by 15%, which preserves the agreement with the CDF data, further improves the description of the DD-dominated data at $\sqrt{s} = 7 \text{ TeV}$. These modifications are incorporated into the simulation

used here. The measured cross sections are also compared to the predictions of PYTHIA 6 ZZ* [16] and to MC generators based on Regge-Gribov phenomenology: PHOJET (version 1.12-35) [17,18], QGSJET-II (versions 03 and 04) [19,20], and EPOS LHC [21]; the latter two are commonly used in cosmic-ray physics [22].

At the stable-particle level (where stable particles are those with lifetime τ such that $c\tau > 10 \text{ mm}$), the kinematic regions covered by the present measurements are defined by the masses M_X and M_Y of the two final-state hadronic systems separated by the largest rapidity gap in the event. For a final-state particle of energy E and longitudinal momentum p_z , rapidity is defined as $y = (1/2) \ln[(E + p_z)/(E - p_z)]$. At stable-particle level the gap is defined as the largest rapidity separation between stable particles, without any acceptance restriction. The final state is then separated into systems X and Y , which populate the regions on the positive and negative side of the rapidity gap, respectively. The corresponding masses M_X and M_Y are calculated from the full set of four-vectors in the respective group of stable particles. In the following sections, M_X and M_Y are given in units of GeV.

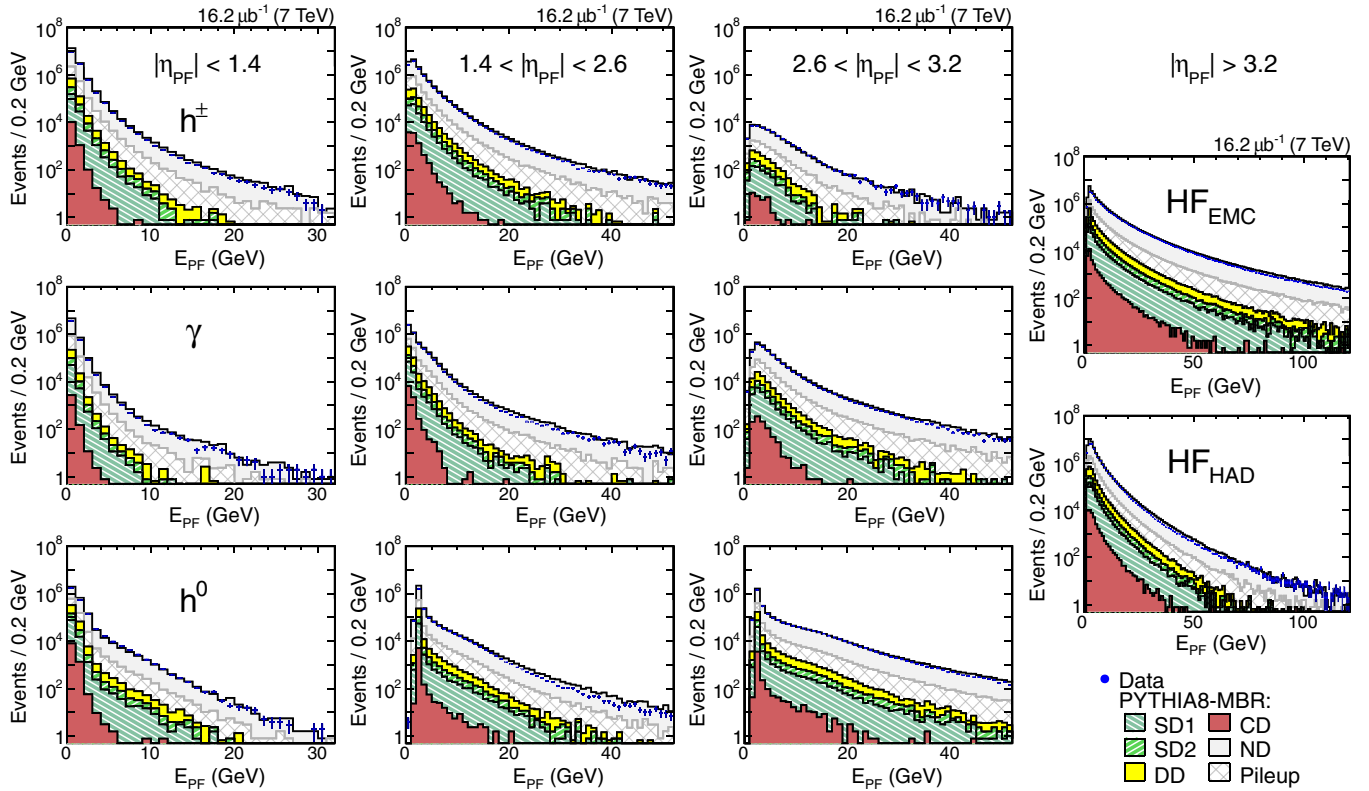


FIG. 2 (color online). Detector-level distributions of the energy of PF objects in four pseudorapidity intervals: $|\eta_{PF}| < 1.4$, $1.4 < |\eta_{PF}| < 2.6$, $2.6 < |\eta_{PF}| < 3.2$, and $|\eta_{PF}| > 3.2$, corresponding to the barrel, end-cap, end-cap-forward transition, and forward detector regions (columns), for five particle candidate types: charged hadrons (tracks), photons, neutral hadrons, and two types that yield electromagnetic or hadronic energy deposits in HF (rows). Electron and muon candidates constitute less than 0.1% of the PF objects reconstructed in the $|\eta_{PF}| < 2.6$ region, and are not shown. The data are compared to the predictions of the PYTHIA 8 MBR simulation, normalized to the integrated luminosity of the data sample. The contribution of each of the generated processes is shown separately.

We use the pseudorapidity variable to select diffractive events at the detector level. At the stable-particle level, the true rapidity is used. For the pseudorapidity gap cross section, pseudorapidity (not true rapidity) is used at the hadron level to avoid unnecessary large bin migrations between the distributions measured at the detector and stable-particle levels. As the central CMS detector is insensitive to low-mass diffraction, we use the PYTHIA 8 MBR simulation, which describes the data well, to extrapolate the measured cross section into the low-mass region.

The detailed MC simulation of the CMS detector response is based on GEANT4 [23]. Simulated PYTHIA 8 4C and PYTHIA 8 MBR events are processed and reconstructed in the same manner as collision data.

IV. EVENT SELECTION

The present analysis is based on event samples collected during the 2010 commissioning period, when the LHC was operating at low pileup. For the results presented in Secs. V–IX, only data with information from the CASTOR calorimeter are used, which correspond to an integrated luminosity of $16.2 \mu\text{b}^{-1}$, and have an average number of inelastic pp collisions per bunch crossing of $\mu = 0.14$. The results based on pseudorapidity-gap events presented in Section X are extracted from a different set of data taking runs with negligible pileup ($\mu = 0.006$) that correspond to an integrated luminosity of $20.3 \mu\text{b}^{-1}$. Events were selected online by requiring a signal in both BPTX detectors, in conjunction with a signal in any of the BSC scintillators. These conditions correspond to requiring the presence of two crossing bunches along with activity in the main CMS detector (minimum bias trigger).

Offline selections [24] are applied to remove beam-scraping, beam-halo, and noise events. In addition, a minimal activity in the main CMS detectors is imposed offline by requiring at least two particle-flow (PF) objects reconstructed within the geometrical acceptance of the BSC detectors ($3.23 < |\eta| < 4.65$, with an energy of at least 4 GeV for each PF object). Particle-flow objects [25,26] are particle candidates obtained by optimally combining the information from the tracking system and the calorimeters. In the forward regions ($|\eta| > 2.5$), where there is no tracking, PF objects reduce to calorimeter towers. Figure 2 shows the distributions of the energy of the PF objects reconstructed in different detector regions for different particle candidates, compared to the prediction of the PYTHIA 8 MBR simulation, which describes the data well. The requirement on the minimum energy of PF objects was found by studying data collected in dedicated runs with no beam; it depends on the detector region and the particle candidates and varies from zero for tracks to 4 GeV for the HF towers. To assure a reliable Monte Carlo description of the data, the two innermost (most forward) rings of HF are not used in the analysis, thus limiting the central CMS detector coverage to $|\eta| \lesssim 4.7$. The two

outermost (most central) HF rings are also not used for the same reason. No vertex requirement is imposed. This procedure gives high acceptance for diffractive events with the hadronic system outside the tracking acceptance (i.e., with low to moderate diffractive masses, $12 \lesssim M_X \lesssim 100 \text{ GeV}$). According to the PYTHIA 8 MBR simulation, the selection described above accepts about 90% of the events corresponding to the total inelastic cross section in the region of $\log_{10} M_X > 1.1$ or $\log_{10} M_Y > 1.1$.

V. DIFFRACTIVE EVENT TOPOLOGIES

The events satisfying the selection described in Sec. IV constitute a minimum bias sample dominated by inclusive inelastic events in the region covered by the central CMS detector ($|\eta| \lesssim 4.7$). They are mostly composed of non-diffractive (ND) events for which final-state particle production occurs in the entire η space available, as shown schematically in Fig. 3(a). In contrast, diffractive events are expected to have an LRG in the final state. Experimentally, the following diffractive topologies are defined, depending on the position of the reconstructed LRG in the central detector:

- (i) FG1: a forward pseudorapidity gap at the edge of the detector on the positive η side [Figs. 3(b) and 3(c)];

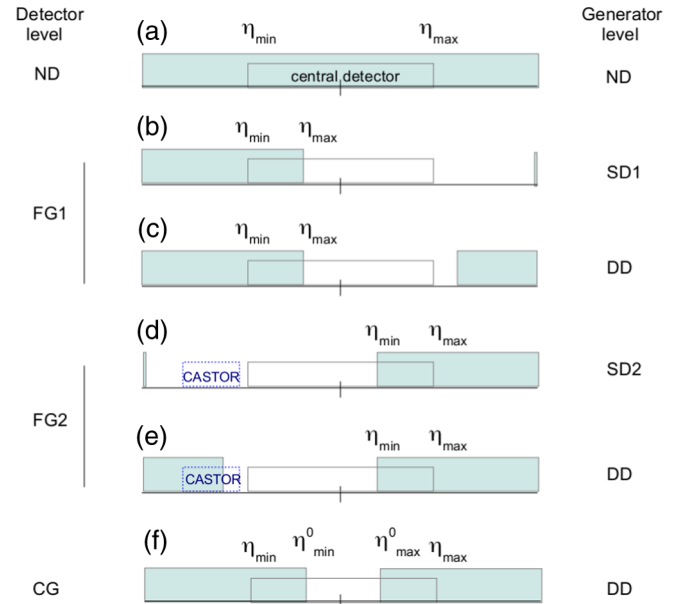


FIG. 3 (color online). Event topologies in final-state particle η space. Detector level: nondiffractive events (ND), diffractive events with a forward pseudorapidity gap on the positive (FG1) or negative (FG2) η side of the detector, or with a central pseudorapidity gap (CG). Generator level: (a) ND, $pp \rightarrow X$, (b) SD1, $pp \rightarrow Xp$, (d) SD2, $pp \rightarrow pY$, and (c, e, f) DD, $pp \rightarrow XY$, events. The empty box represents the central CMS detector ($|\eta| \lesssim 4.7$), filled full boxes indicate final-state hadronic systems or a proton—the vertical thin bar at the right/left end of sketch (b)/(d). The dotted empty boxes in (d) and (e) represent the CASTOR calorimeter ($-6.6 < \eta < -5.2$).

- (ii) FG2: a forward pseudorapidity gap at the edge of the detector on the negative η side [Figs. 3(d) and 3(e)];
- (iii) CG: a central pseudorapidity gap in the detector around $\eta = 0$ [Fig. 3(f)].

The experimental topology with a forward pseudorapidity gap on each edge of the detector [CD topology, Fig. 1(d)] is neglected in this analysis because of the limited number of such events. For the FG1 and FG2 topologies the pseudorapidity gap is related to the variables η_{\max} and η_{\min} (Fig. 3), defined as the highest (lowest) η of the PF object reconstructed in the central detector. Experimentally, the pseudorapidity gap in CG events may be expressed as $\Delta\eta^0 = \eta_{\max}^0 - \eta_{\min}^0$, where η_{\max}^0 (η_{\min}^0) is the closest-to-zero η value of the PF objects reconstructed on the positive (negative) η side of the central detector (Fig. 3).

Figure 4 shows the distributions of η_{\max} , η_{\min} , and $\Delta\eta^0 = \eta_{\max}^0 - \eta_{\min}^0$ for the minimum bias sample defined in Sec. IV, compared to MC predictions. For the $\Delta\eta^0$ selection, the additional requirement that activity be present on both η sides of the central detector is imposed. The data are dominated by the contribution from ND events, for which rapidity gaps are exponentially suppressed [27]. Diffractive events appear as a flattening of the exponential distributions, and dominate the regions of low η_{\max} , high η_{\min} , and high $\Delta\eta^0$. The absence of events around $|\eta_{\max}|(|\eta_{\min}|) \approx 3$ in Figs. 4(a) and 4(b) reflects the fact that the two outermost (most central) rings of HF are not used in the analysis; the depletion of events around $|\eta_{\max}|(|\eta_{\min}|) \approx 2.4$ corresponds to the transition region between the tracker and the forward calorimeters, where higher thresholds are applied for the latter. The regions of $3 \lesssim \Delta\eta^0 \lesssim 6$ and $\Delta\eta^0 \gtrsim 6$ in Fig. 4(c) correspond to the DD topology for which one or both of the η_{\max}^0 and η_{\min}^0 edges are in the HF calorimeters. In order to select samples of FG1, FG2, and CG events with a central LRG signature, the requirements $\eta_{\max} < 1$, $\eta_{\min} > -1$, and $\Delta\eta^0 > 3$ are imposed, respectively.

According to the expectations of the PYTHIA 8 MBR simulation, the event samples defined experimentally as FG1 or FG2 [Figs. 4(a) and 4(b)] originate from approximately equal numbers of SD events with $1.1 \lesssim \log_{10} M_X \lesssim 2.5$ and DD events for which one dissociated-proton mass is in this M_X range, while the other is small and escapes detection in the central detector, cf. Figs. 3(c) and 3(e). For the FG2 topology, CASTOR ($-6.6 < \eta < -5.2$) is used to separate diffractive events into two samples: $\log_{10} M_Y \lesssim 0.5$ (SD enhanced) and $0.5 \lesssim \log_{10} M_Y \lesssim 1.1$ [DD enhanced, Figs. 3(d) and 3(e)]. The detection of the low-mass dissociated system, Y , is performed by using a CASTOR tag, defined as the presence of a signal above the energy threshold (1.48 GeV) in at least one of the 16 ϕ sectors of the first five CASTOR modules. Since no detector is available for tagging the low-mass dissociated system on

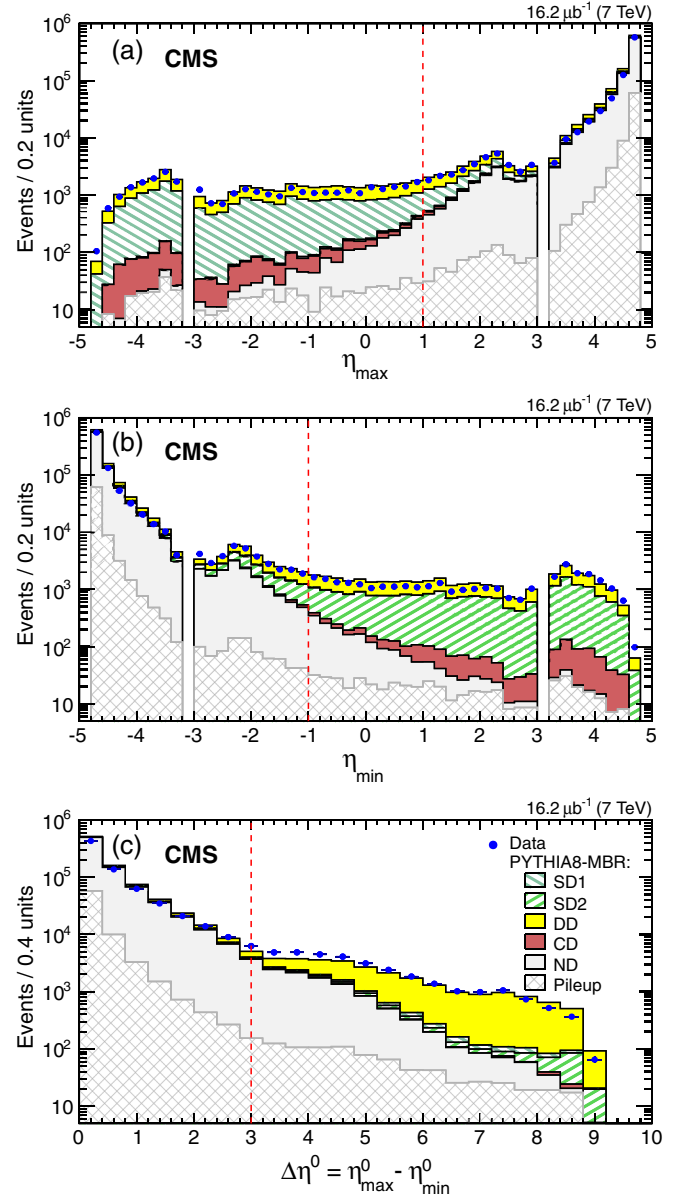


FIG. 4 (color online). Detector-level distributions for the (a) η_{\max} , (b) η_{\min} , and (c) $\Delta\eta^0 = \eta_{\max}^0 - \eta_{\min}^0$ variables measured in the minimum bias sample (with only statistical errors shown), compared to predictions of the PYTHIA 8 MBR simulation normalized to the integrated luminosity of the data sample. Contributions from each of the MC-generated processes, and simulated events with at least two overlapping interactions of any type (pileup), are shown separately. The dashed vertical lines indicate the boundaries for the $\eta_{\max} < 1$, $\eta_{\min} > -1$, and $\Delta\eta^0 > 3$ selections.

the positive η side, the FG1 sample is treated as a control sample in this analysis.

The range of the dissociation mass M_X for the true SD process in the FG2-type sample after all detector selections is shown as a hatched histogram in Fig. 5 for PYTHIA 8 MBR (left) and PYTHIA 8 4C (right) and corresponds to

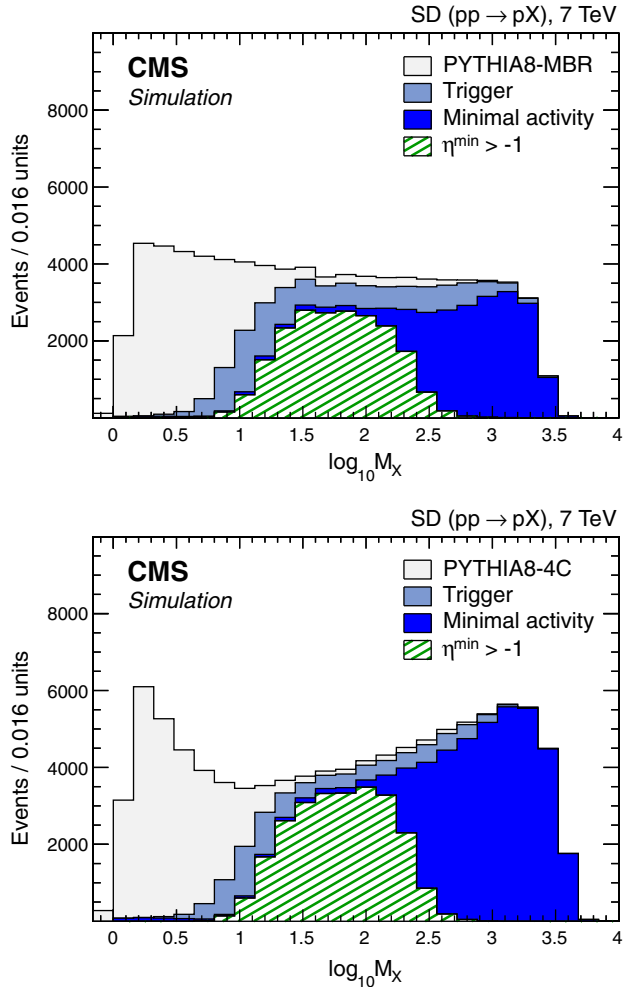


FIG. 5 (color online). Simulated distributions of the dissociated mass M_X at stable-particle level for the SD process in the FG2 sample at successive selection stages (trigger, minimal detector activity within BSC acceptance, $\eta_{\min} > -1$) for PYTHIA 8 MBR (left) and PYTHIA 8 4C (right). The MC samples are normalized to the luminosity of the data sample.

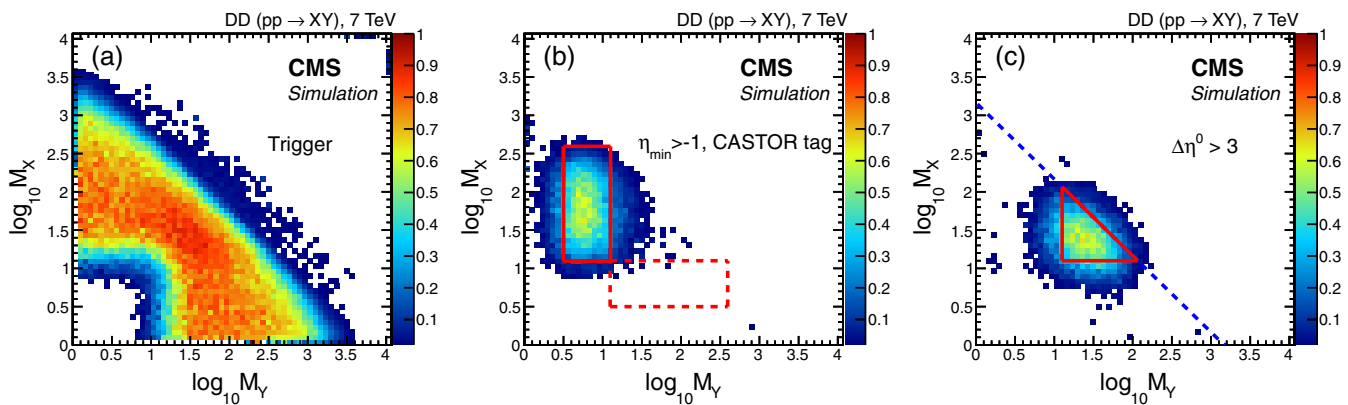


FIG. 6 (color online). Simulated (PYTHIA 8 MBR) event selection efficiency in the M_X vs. M_Y plane for true DD events after (a) the trigger selection, and (b) the FG2 selection with a CASTOR tag or (c) the CG selection (Fig. 3). The regions delimited by the solid (red) lines in (b) and (c) are those of the cross section measurements; the dashed (red) box in (b) corresponds to the enlarged region for which the cross section is given (Sec. IX), assuming the same dependence on M_X and M_Y ; the dashed (blue) line in (c) marks the region of $\Delta\eta > 3$.

$1.1 \lesssim \log_{10} M_X \lesssim 2.5$. Similar distributions are obtained for events in the FG1-type sample, in which the dissociated system originates from the proton on the other side of the detector. The ranges of dissociation masses, M_X and M_Y , for the true DD events in the minimum bias sample after the trigger selection, in the FG2-type sample with a CASTOR tag, and in the CG-type sample after all detector selections, are shown in the efficiency plots of Figs. 6(a), 6(b), and 6(c), respectively. The FG2-type events, with the pseudorapidity gap reconstructed at the edge of the central detector, populate the region of $1.1 \lesssim \log_{10} M_X \lesssim 2.5$ and $0.5 \lesssim \log_{10} M_Y \lesssim 1.1$ [solid box in Fig. 6(b)]. The selection based on the CG topology requires both diffractive masses to be in the central detector; this leads to different coverage in the (M_X, M_Y) plane. Events populate the region of $\log_{10} M_X \gtrsim 1.1$ and $\log_{10} M_Y \gtrsim 1.1$ [Fig. 6(c)], in addition to $\Delta\eta^0 > 3$, thus providing a complementary measurement of the DD cross section.

VI. FORWARD PSEUDORAPIDITY GAP CROSS SECTIONS FROM THE FG2 EVENT SAMPLE

The forward pseudorapidity gap cross sections are measured as a function of the variable ξ_X , which is related to the mass M_X of the dissociated system by:

$$\xi_X = \frac{M_X^2}{s}. \quad (1)$$

For the FG2 sample, M_X corresponds to the dissociated system that can be detected in the central detector [right-hand side of Figs. 3(d) and 3(e)]. The CASTOR calorimeter allows the detection of the hadronic system Y when it escapes the central detector, and the separation of the FG2 sample into subsamples corresponding to $\log_{10} M_Y < 0.5$

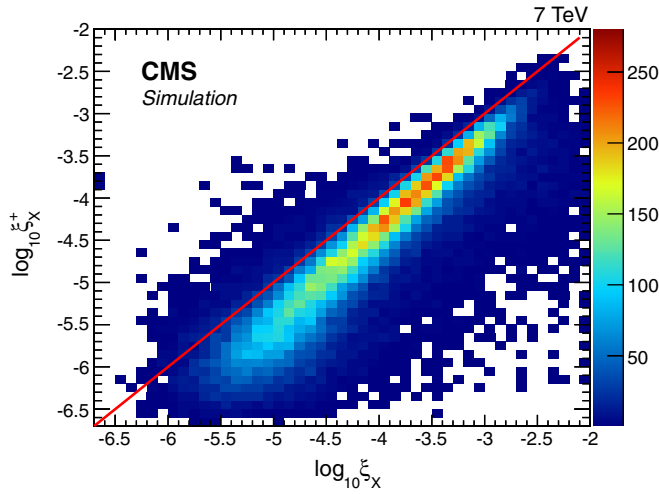


FIG. 7 (color online). Two-dimensional distribution of reconstructed ξ_X^+ vs. generated ξ_X values for the events in the SD2 sample obtained with the PYTHIA 8 MBR simulation. The solid red line represents the condition $\log_{10}\xi_X^+ = \log_{10}\xi_X$.

and $0.5 < \log_{10}M_Y < 1.1$, which are dominated by SD and DD events, respectively. For the purely SD events, ξ_X represents the fractional longitudinal momentum loss of the incoming proton.

At detector level, the variable ξ_X is reconstructed as

$$\xi_X^\pm = \frac{\sum_i (E^i \mp p_z^i)}{\sqrt{s}}, \quad (2)$$

where i runs over all PF objects measured in the central detector, and E^i and p_z^i are the energy and the longitudinal momentum of the i th PF object, respectively. The energy is related to the particle three-momentum assuming a mass that depends on the PF object type; e.g. for charged hadrons a pion mass is assumed. The signs (\pm) in Eq. (2) indicate whether the dissociated system is on the $\pm z$ side of the detector. For the FG2-type events under study, ξ_X corresponds to ξ_X^+ .

Since part of the hadronic system X escapes the detector through the forward beam hole, and since low-energy particles remain undetected because of the PF object thresholds, the reconstructed ξ_X^+ values are underestimated. This can be seen in Fig. 7, which shows a scatter plot of reconstructed vs. generated values of ξ_X for PYTHIA 8 MBR events in the FG2 sample. As ξ_X decreases, its unmeasured fraction increases (the beam hole size is fixed), resulting in a larger deviation from the $\log_{10}\xi_X^+ = \log_{10}\xi_X$ line. The calibration factor $C(\xi_X^+)$, which brings the reconstructed values of ξ_X^+ [Eq. (2)] to their true values [Eq. (1)] according

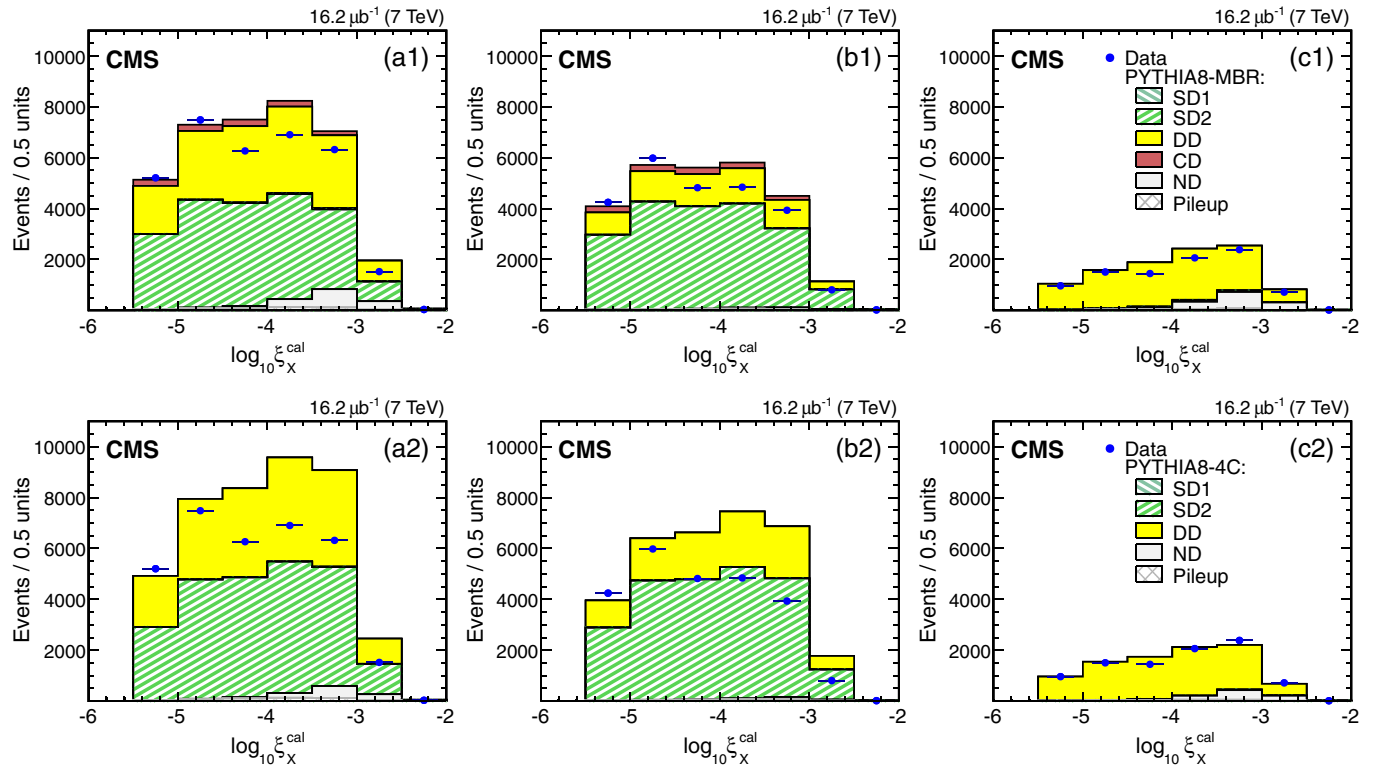


FIG. 8 (color online). Detector-level distributions of the reconstructed and calibrated ξ_X for (a) the entire FG2 sample, and the FG2 subsamples with (b) no CASTOR tag, and (c) a CASTOR tag (statistical errors only). The data are compared to the predictions of the PYTHIA 8 MBR (top three plots) and PYTHIA 8 4C (bottom three plots) simulations, which are normalized to the integrated luminosity of the data sample. The contribution of each of the generated processes is shown separately.

TABLE I. The differential forward pseudorapidity gap cross sections $d\sigma/d\log_{10}\xi_X$ for $\log_{10}M_Y < 0.5$ (SD dominated, without CASTOR tag) and $0.5 < \log_{10}M_Y < 1.1$ (DD dominated, with CASTOR tag). The first and the second errors correspond to statistical and systematic uncertainties, respectively.

bin	$d\sigma_{\text{no-CASTOR}}/d\log_{10}\xi_X$ (mb)	$d\sigma_{\text{CASTOR}}/d\log_{10}\xi_X$ (mb)
$-5.5 < \log_{10}\xi_X < -5.0$	$1.17 \pm 0.02^{+0.08}_{-0.11}$	$0.30 \pm 0.01^{+0.03}_{-0.04}$
$-5.0 < \log_{10}\xi_X < -4.5$	$1.16 \pm 0.02^{+0.18}_{-0.17}$	$0.30 \pm 0.01 \pm 0.04$
$-4.5 < \log_{10}\xi_X < -4.0$	$0.91 \pm 0.02^{+0.15}_{-0.12}$	$0.26 \pm 0.01 \pm 0.03$
$-4.0 < \log_{10}\xi_X < -3.5$	$0.88 \pm 0.02^{+0.10}_{-0.09}$	$0.32 \pm 0.01^{+0.03}_{-0.05}$
$-3.5 < \log_{10}\xi_X < -3.0$	$0.98 \pm 0.02^{+0.14}_{-0.13}$	$0.51 \pm 0.01^{+0.06}_{-0.05}$
$-3.0 < \log_{10}\xi_X < -2.5$	$0.78 \pm 0.03^{+0.11}_{-0.09}$	$0.67 \pm 0.03^{+0.12}_{-0.10}$

to the formula $\log_{10}\xi_X^{\text{cal}} = \log_{10}\xi_X^+ + C(\xi_X^+)$, is evaluated from the PYTHIA 8 MBR simulation, by studying the $\log_{10}\xi_X - \log_{10}\xi_X^+$ difference in bins of $\log_{10}\xi_X^+$. The factor $C(\xi_X^+)$ decreases from the value of 1.1 at $\log_{10}\xi_X^+ \approx -6.5$ to 0.2 at $\log_{10}\xi_X^+ \approx -2.5$, with an uncertainty of 9%, estimated by comparing the PYTHIA 8 MBR and PYTHIA 8 4C simulations.

Figure 8 presents the distribution of the calibrated $\log_{10}\xi_X^{\text{cal}}$ for the FG2 sample, compared to the predictions of the PYTHIA 8 MBR (top) and PYTHIA 8 4C (bottom) simulations. Figure 8(a) shows the comparison for the entire FG2 sample. The separation of the SD and DD processes (hatched green and solid yellow histograms, respectively) by means of the CASTOR tag is clearly seen in Figs. 8(b) and 8(c). Overall, the PYTHIA 8 MBR MC describes the data better than PYTHIA 8 4C and is therefore used to extract the diffractive cross sections. Both MC predictions are presented for a Pomeron trajectory with $\varepsilon = 0.08$ and describe the region of low ξ_X well. At higher ξ_X values, $\varepsilon = 0.104$ would be more appropriate [14], providing a better agreement with the data in that region. Since the M_X dependence of ε is currently not available in the MC models used for this analysis, we extract cross sections using $\varepsilon = 0.08$ and evaluate a systematic uncertainty related to the possible variation of ε , as explained in Sec. IX.

The differential cross sections measured in bins of ξ_X , separately for $\log_{10}M_Y < 0.5$ (no CASTOR tag) and $0.5 < \log_{10}M_Y < 1.1$ (CASTOR tag), are calculated with the formula

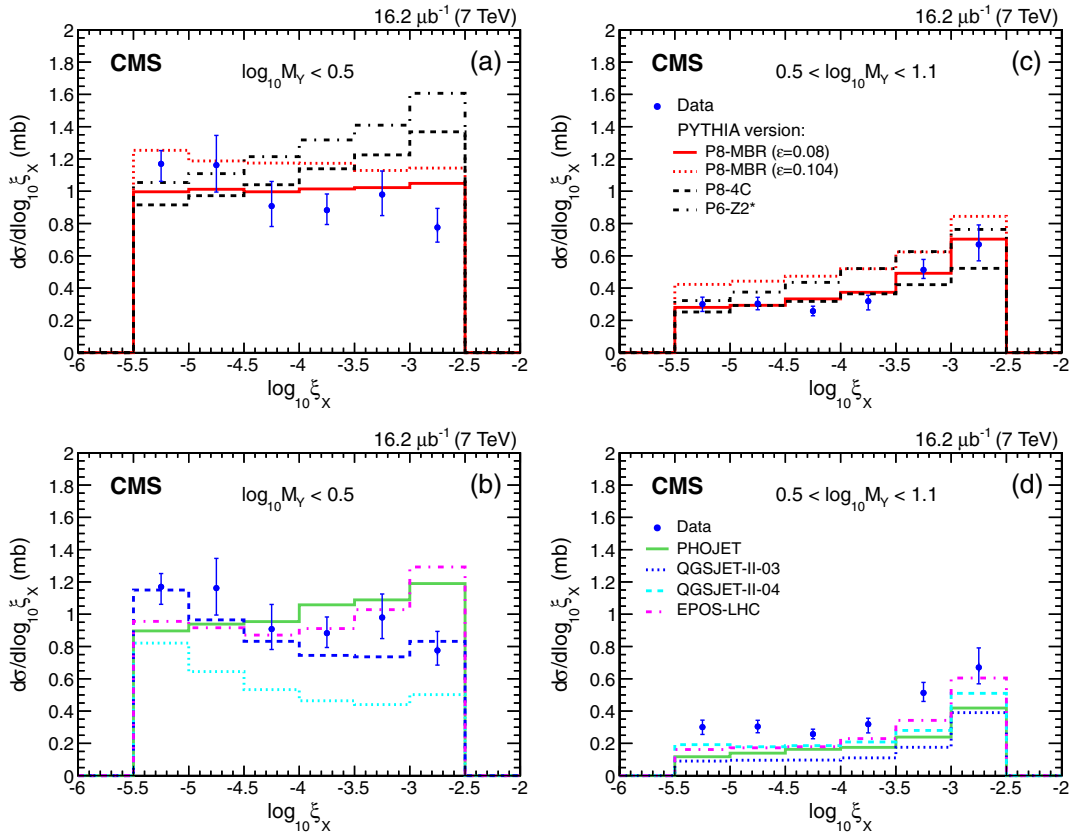


FIG. 9 (color online). Cross sections $d\sigma/d\log_{10}\xi_X$ for (a,b) $\log_{10}M_Y < 0.5$ (SD dominated) and (c,d) $0.5 < \log_{10}M_Y < 1.1$ (DD dominated) compared to MC predictions: (a,c) PYTHIA 8 MBR, PYTHIA 8 4C, PYTHIA 6 Z2*, and (b,d) PHOJET, QGSJET-II 03, QGSJET-II 04, EPOS. Error bars are dominated by systematic uncertainties (discussed in Sec. XI).

$$\frac{d\sigma}{d\log_{10}\xi_X} = \frac{N^{\text{evt}}}{\mathcal{L}(\Delta\log_{10}\xi_X)_{\text{bin}}}, \quad (3)$$

where N^{evt} is the number of events in the bin, corrected for acceptance and migration effects, \mathcal{L} is the integrated luminosity, and $(\Delta\log_{10}\xi_X)_{\text{bin}}$ is the bin width. The acceptance and migration corrections are evaluated with the iterative Bayesian unfolding technique [28], as implemented in the ROOUNFOLD package [29], with four iterations. The number of iterations is optimized following the procedure suggested in Ref. [28], by studying the difference in χ^2 (goodness-of-fit) values after consecutive iterations; the final unfolded distribution, folded back to the detector level, is consistent with the observed data. The response matrix is obtained with PYTHIA 8 MBR ($\epsilon = 0.08$). The results are presented in Table I; they include a small correction for overlapping pp collisions ($\sim 7\%$), evaluated by comparing MC simulations with and without pileup.

Figures 9(a,c) present the measured cross sections compared to the PYTHIA 8 MBR, PYTHIA 8 4C, and PYTHIA 6 Z2* predictions. The error bars of the data points are dominated by systematic uncertainties, which are discussed in Sec. XI. The predictions of PYTHIA 8 MBR are shown for two values of the ϵ parameter of the Pomeron trajectory. Both values, $\epsilon = 0.08$ and $\epsilon = 0.104$, describe the measured cross section for $\log_{10}M_Y < 0.5$. The data for $0.5 < \log_{10}M_Y < 1.1$ favor the smaller value of ϵ , specifically in the region of lower ξ_X , corresponding to the topology in which both dissociation masses are low. The prediction of the Schuler-Sjöstrand model, used in the PYTHIA 8 4C simulation, describes well the measured cross section for $0.5 < \log_{10}M_Y < 1.1$, while the PYTHIA 6 Z2* simulation overestimates it. Both predictions are higher than the data for $\log_{10}M_Y < 0.5$ at high $\log_{10}\xi_X$, and the predicted rising behavior of the cross section is not confirmed by the data in the region of the measurement, $-5.5 < \log_{10}\xi_X < -2.5$.

Figures 9(b,d) present a comparison of the measured cross sections with the PHOJET, QGSJET-II 03, QGSJET-II 04, and EPOS predictions. None of the models is able to describe the magnitude of the cross section in the region $0.5 < \log_{10}M_Y < 1.1$. For $\log_{10}M_Y < 0.5$, the PHOJET and EPOS generators fail to describe the falling behavior of the data, QGSJET-II 03 describes the measured cross section reasonably well, while QGSJET-II 04 underestimates the magnitude of the cross section.

VII. CENTRAL PSEUDORAPIDITY GAP CROSS SECTION FROM THE CG EVENT SAMPLE

The cross section for events with a central pseudorapidity gap is measured as a function of the variable $\Delta\eta$, defined as $\Delta\eta = -\log\xi$, where $\xi = M_X^2 M_Y^2 / (sm_p^2)$, with m_p the proton mass. For purely DD events, the position of

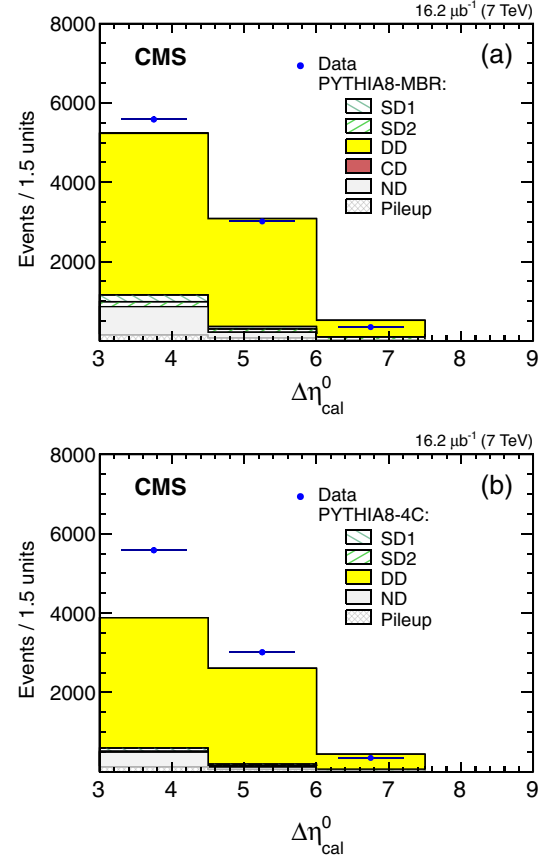


FIG. 10 (color online). Detector-level distributions of reconstructed and calibrated $\Delta\eta^0$ values for the measured CG sample with a central LRG. The data are compared to predictions of (a) PYTHIA 8 MBR, and (b) PYTHIA 8 4C simulations normalized to the integrated luminosity of the data sample. Contributions for each of the generated processes are shown separately.

the gap center is related to the dissociation masses by the expression $\eta_c = \log(M_Y/M_X)$.

As discussed in Sec. V, the central-gap width [Fig. 4(c)] is reconstructed as $\Delta\eta^0 = \eta_{\text{max}}^0 - \eta_{\text{min}}^0$. The calibration factor C , which corrects $\Delta\eta^0$ for detector effects according to the formula $\Delta\eta_{\text{cal}}^0 = \Delta\eta_{\text{rec}}^0 - C$, is extracted from the PYTHIA 8 MBR MC as the difference $C = \Delta\eta_{\text{rec}}^0 - \Delta\eta_{\text{gen}}^0$. It amounts to $C = 2.42 \pm 0.12$, with the uncertainty estimated from a comparison with PYTHIA 8 4C. Figure 10 presents the distribution of the calibrated $\Delta\eta^0$ for the CG sample along with simulated distributions from PYTHIA 8 MBR and PYTHIA 8 4C.

The differential cross section, measured in bins of $\Delta\eta$ for $\Delta\eta > 3$, $\log_{10}M_X > 1.1$, and $\log_{10}M_Y > 1.1$, is calculated according to the formula

$$\frac{d\sigma}{d\Delta\eta} = \frac{N^{\text{evt}}}{\mathcal{L}(\Delta\eta)_{\text{bin}}}, \quad (4)$$

where N^{evt} is the number of events in a given bin, corrected for acceptance and migration effects, and also for the

TABLE II. The differential central pseudorapidity gap (DD dominated) cross section $d\sigma/d\Delta\eta$ for $\Delta\eta > 3$, $\log_{10}M_X > 1.1$, and $\log_{10}M_Y > 1.1$. The first and second errors correspond to statistical and systematic uncertainties, respectively.

$\Delta\eta$ bin	$d\sigma_{\text{CG}}/d\Delta\eta$ (mb)
$3.0 < \Delta\eta < 4.5$	$0.25 \pm 0.003^{+0.05}_{-0.04}$
$4.5 < \Delta\eta < 6.0$	$0.11 \pm 0.002^{+0.03}_{-0.02}$
$6.0 < \Delta\eta < 7.5$	$0.032 \pm 0.001 \pm 0.009$

extrapolation from $\Delta\eta^0 > 3$ (for gaps overlapping $\eta = 0$) to $\Delta\eta > 3$ for all gaps, \mathcal{L} is the integrated luminosity, and $(\Delta\eta)_{\text{bin}}$ is the bin width. The acceptance and migration corrections are evaluated with the iterative Bayesian unfolding technique [28] with two iterations, optimized as described in Sec. VI. The response matrix is obtained using PYTHIA 8 MBR with $\varepsilon = 0.08$.

The measured differential cross section is presented in Table II, and compared to predictions of theoretical models in Fig. 11. The results take into account the pileup correction, and the uncertainties are dominantly systematic (see Sec. XI). The prediction of the PYTHIA 8 MBR MC simulation with both $\varepsilon = 0.08$ and 0.104 describes well the central-gap data. PYTHIA 8 4C underestimates the data in all bins, while PYTHIA 6 Z2* overestimates the data in the lowest $\Delta\eta$ bin. The PHOJET, QGSJET-II 03, QGSJET-II 04, and EPOS generators underestimate the magnitude of the measured cross section.

VIII. INTEGRATED CROSS SECTIONS

The forward and central pseudorapidity gap samples are also used to measure the integrated cross sections in the kinematic regions given in Secs. VI and VII. The forward pseudorapidity-gap cross sections, $\sigma_{\text{no-CASTOR}}$ and σ_{CASTOR} , are measured in the region $-5.5 < \log_{10}\xi_X < -2.5$, for events without and with a CASTOR tag, corresponding to $\log_{10}M_Y < 0.5$, and $0.5 < \log_{10}M_Y < 1.1$,

respectively, while the central pseudorapidity-gap cross section, σ_{CG} , is measured for $\Delta\eta > 3$, $\log_{10}M_X > 1.1$, and $\log_{10}M_Y > 1.1$.

Each cross section is evaluated by means of the formula

$$\sigma = \frac{N^{\text{evt}}}{A\mathcal{L}}, \quad (5)$$

where N^{evt} is the number of events in the kinematic regions given above, A is the acceptance, defined as the ratio of the number of events reconstructed to the number of events generated in that bin, taking into account the pileup correction, and \mathcal{L} is the integrated luminosity. The acceptance is evaluated with the PYTHIA 8 MBR MC generator.

Values of $\sigma_{\text{no-CASTOR}} = 2.99 \pm 0.02(\text{stat})^{+0.32}_{-0.29}(\text{syst})$ mb, $\sigma_{\text{CASTOR}} = 1.18 \pm 0.02(\text{stat}) \pm 0.13(\text{syst})$ mb, and $\sigma_{\text{CG}} = 0.58 \pm 0.01(\text{stat})^{+0.13}_{-0.11}(\text{syst})$ mb are obtained. Systematic uncertainties are evaluated as discussed in Sec. XI. As a consistency check of the analysis procedure, we measure the part of the total inelastic cross sections that is visible in the central CMS detector, corresponding to the region $\log_{10}M_X > 1.1$ or $\log_{10}M_Y > 1.1$. A value of $\sigma_{\text{vis}}^{\text{check}} = 61.29 \pm 0.07(\text{stat})$ mb is found, in good agreement with the published CMS result $\sigma_{\text{inel}}(\xi > 5 \times 10^{-6}) = 60.2 \pm 0.2(\text{stat}) \pm 1.1(\text{syst}) \pm 2.4(\text{lumi})$ mb, measured in a slightly different kinematic region (M_X or $M_Y \gtrsim 16.7$ GeV) [30]. According to PYTHIA 8 MBR, the phase space difference between the two measurements corresponds to $\sigma_{\text{vis}}^{\text{check}} - \sigma_{\text{inel}}(\xi > 5 \times 10^{-6}) = 0.5$ mb.

Table III lists the measured cross sections together with the absolute predictions of the MC simulations. Based on the results presented thus far, the following conclusions can be drawn about the models: PHOJET, QGSJET-II 03, QGSJET-II 04, and EPOS predict too few DD events, which dominate the measured σ_{CASTOR} and σ_{CG} cross sections [Figs. 9(d) and 11(b)]; among these four models only QGSJET-II 03 satisfactorily predicts the $\sigma_{\text{no-CASTOR}}$ cross section [Fig. 9(b)]; PYTHIA 8 4C,

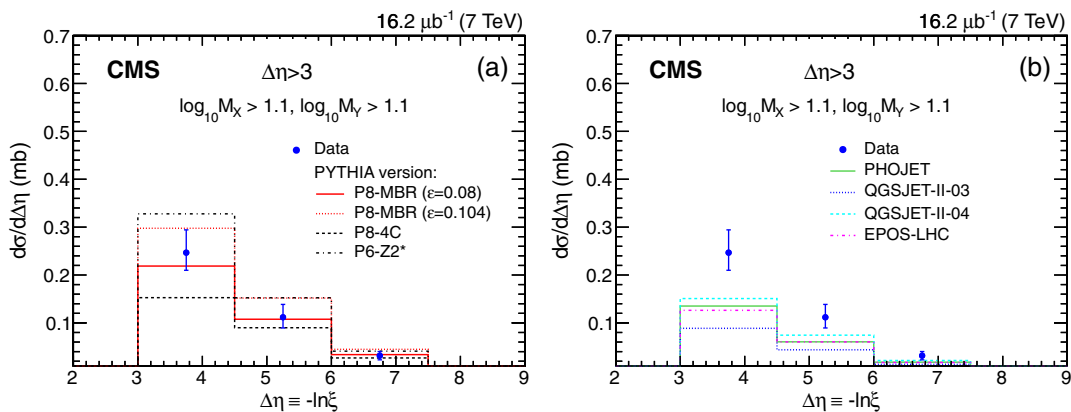


FIG. 11 (color online). The central pseudorapidity-gap cross section $d\sigma/d\Delta\eta$ (DD dominated) compared to MC predictions: (a) PYTHIA 8 MBR, PYTHIA 8 4C, and PYTHIA 6 Z2*, and (b) PHOJET, QGSJET-II 03, QGSJET-II 04, and EPOS. Error bars are dominated by systematic uncertainties, which are discussed in Sec. XI.

TABLE III. Measured $\sigma_{\text{no-CASTOR}}$, σ_{CASTOR} , and σ_{CG} cross sections, compared to predictions of MC models. The first and the second errors in the data correspond to statistical and systematic uncertainties, respectively.

	$\sigma_{\text{no-CASTOR}}$ (mb) SD dominated	σ_{CASTOR} (mb) DD dominated	σ_{CG} (mb) DD dominated
Data	$2.99 \pm 0.02^{+0.32}_{-0.29}$	$1.18 \pm 0.02 \pm 0.13$	$0.58 \pm 0.01^{+0.13}_{-0.11}$
PYTHIA 8 MBR	3.05	1.24	0.54
PYTHIA 8 4C	3.31	1.10	0.40
PYTHIA 6 Z2*	3.86	1.52	0.78
PHOJET	3.06	0.63	0.32
QGSJET-II 03	2.63	0.48	0.22
QGSJET-II 04	1.70	0.78	0.37
EPOS	2.99	0.85	0.31

PYTHIA 6 Z2*, PHOJET, and EPOS do not predict correctly the ξ_X dependence for the SD process, which dominates the measured forward pseudorapidity gap cross section for $\log_{10} M_Y < 0.5$ [Fig. 9(a), 9(b)]; and PYTHIA 8 MBR describes the data within uncertainties in all the measured regions.

IX. THE SD AND DD CROSS SECTIONS

The $\sigma_{\text{no-CASTOR}}$ cross section discussed above is dominated by SD events [Fig. 8(b)], whereas the σ_{CASTOR} and σ_{CG} cross sections are mainly due to DD events (Figs. 8(c) and 10). As the contribution from ND and other diffractive processes to these cross sections is small, we use the event decomposition as defined in the PYTHIA 8 MBR simulation with $\varepsilon = 0.08$ to correct for them and extract the SD and DD cross sections.

The dominant background in the $\sigma_{\text{no-CASTOR}}$ cross section originates from DD events; the CD contribution is minimal, while the ND contribution is negligible [Fig. 8(b)]. The DD contribution is well understood via the CASTOR-tag events [Fig. 8(c)], and has an uncertainty of $\sim 10\%$ – 20% due to the ND contamination. Since the DD events contribute about 20% to the no-CASTOR-tag sample, the uncertainty in the SD cross section due to the subtraction of the DD component amounts to only a few percent. The visible part of the total SD cross section, corresponding to $-5.5 < \log_{10} \xi_X < -2.5$, is found to be $\sigma^{\text{SDvis}} = 4.06 \pm 0.04(\text{stat})^{+0.69}_{-0.63}(\text{syst})$ mb. The result accounts for both $pp \rightarrow Xp$ and $pp \rightarrow pY$.

The dominant background to the σ_{CASTOR} and σ_{CG} cross sections originates from ND events. The CD and SD contributions are negligible in the CASTOR-tag sample, while SD events contribute minimally to the central-gap sample [Figs. 8(c) and 10(a)]. The total DD cross sections integrated over the regions

- (i) $-5.5 < \log_{10} \xi_X < -2.5$ and $0.5 < \log_{10} M_Y < 1.1$, and
 - (ii) $\Delta\eta > 3$, $\log_{10} M_X > 1.1$ and $\log_{10} M_Y > 1.1$,
- are $\sigma_{\text{CASTOR}}^{\text{DDvis}} = 1.06 \pm 0.02(\text{stat}) \pm 0.12(\text{syst})$ mb, and $\sigma_{\text{CG}}^{\text{DDvis}} = 0.56 \pm 0.01(\text{stat})^{+0.15}_{-0.13}(\text{syst})$ mb, respectively.

To provide the DD cross section in the widest kinematic region spanned by the data, we also evaluate the visible DD cross section, σ^{DDvis} , defined as $\sigma^{\text{DDvis}} = 2\sigma_{\text{CASTOR}}^{\text{DDvis}} + \sigma_{\text{CG}}^{\text{DDvis}}$, where the factor of 2 assumes the same dependence of the DD cross section on M_X and M_Y [boxed regions in Fig. 6(b)]. This leads to $\sigma^{\text{DDvis}} = 2.69 \pm 0.04(\text{stat})^{+0.29}_{-0.30}(\text{syst})$, in the kinematic region delimited by the solid and dashed (red) lines in Figs. 6(b) and 6(c). This result is used below to extrapolate the DD cross section to the region $\Delta\eta > 3$ [to the left of the dashed (blue) line in Fig. 6(c)].

A. Extrapolation of the visible SD and DD cross sections

The measurements based on the central CMS detector are insensitive to the low-mass part of diffractive dissociation. Therefore, in order to compare the measured σ^{SDvis} cross section with results of other experiments and theoretical models that present integrated cross sections for $\xi < 0.05$, an extrapolation from $-5.5 < \log_{10} \xi_X < -2.5$ ($\xi_X = M_X^2/s$) to $\xi < 0.05$ is required. Similarly, the σ^{DDvis} cross section must be extrapolated to $\Delta\eta > 3$ (Fig. 6). The extrapolation factors, calculated by using each of the MC simulations introduced in Sec. III, are presented in Appendix A. Not all of the simulations are able to describe the measured cross sections (see Sec. VIII), nor do they include realistic hadronization models (see Appendix B). Following the discussion in Sec. VIII and Appendix B, the extrapolation factors are determined with PYTHIA 8 MBR (with $\varepsilon = 0.08$), which describes well all aspects of our data. The multiplicative factor needed to extrapolate the measured SD cross section to $\xi < 0.05$ is $f_{\text{MBR}}^{\text{SD}} = 2.18^{+13\%}_{-4\%}$, and that for the extrapolation of the DD cross section to $\Delta\eta > 3$ is $f_{\text{MBR}}^{\text{DD}} = 1.92^{+31\%}_{-10\%}$ (Tables VI and VII in Appendix A). The extrapolation uncertainties are estimated by changing the parameters α' and ε of the Pomeron trajectory from their nominal values ($\alpha' = 0.25 \text{ GeV}^{-2}$, $\varepsilon = 0.08$) to those presented in Tables VI and VII (one parameter changed at a time), and adding in quadrature the corresponding deviations with respect to the central result,

separately for the positive and negative deviations. The extrapolated SD and DD cross sections thus obtained are $\sigma^{\text{SD}} = 8.84 \pm 0.08(\text{stat})_{-1.38}^{+1.49}(\text{syst})_{-0.37}^{+1.17}(\text{extrap mb})$ and $\sigma^{\text{DD}} = 5.17 \pm 0.08(\text{stat})_{-0.57}^{+0.55}(\text{syst})_{-0.51}^{+1.62}(\text{extrap})$ mb, respectively.

Figure 12(a) presents the extrapolated SD cross section compared to the ALICE result [3] and a compilation of lower center-of-mass energy measurements [31–35]. The data are also compared to the PYTHIA 8 MBR simulation, as well as to the GLM [36] and KP [37,38] models. The CMS result is consistent with a SD cross section weakly rising with energy.

Figure 12(b) shows the extrapolated DD cross section compared to the ALICE results [3], those by CDF at $\sqrt{s} = 630$ GeV and 1.8 TeV [39], as well as the PYTHIA 8 MBR, GLM [36], and KP [37,38] models. The CMS measurement at $\sqrt{s} = 7$ TeV is in agreement with the ALICE measurement at the same energy. Note, however, that the ALICE result is obtained from the NSD (non-single-diffractive = DD + ND) data, while for the CMS measurement the ND

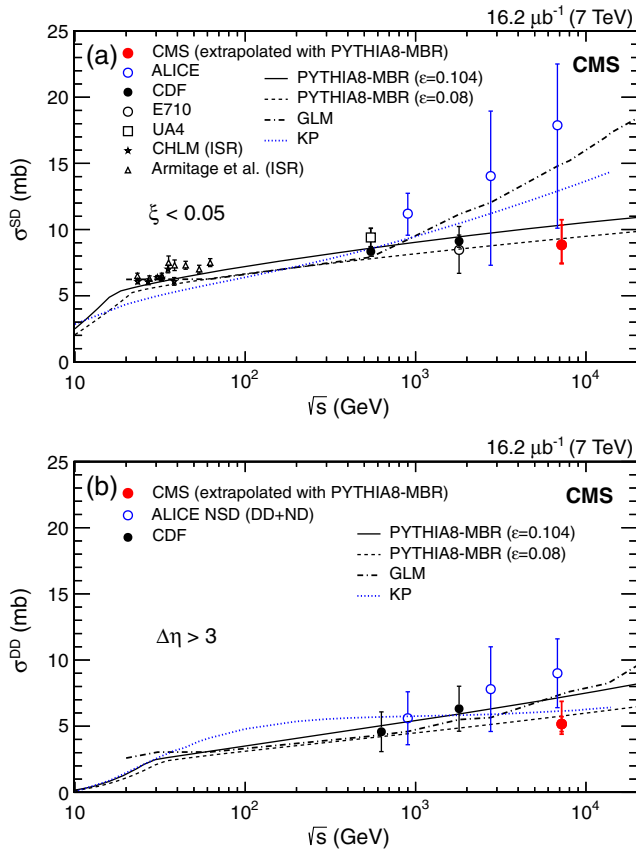


FIG. 12 (color online). Diffractive cross sections as a function of collision energy measured in pp and $p\bar{p}$ collisions [3,31–35,39] compared to PYTHIA 8 MBR ($\epsilon = 0.08, 0.104$) and other model predictions [36–38]: (a) total SD cross section for $\xi < 0.05$, and (b) total DD cross section for $\Delta\eta > 3$. The inner (outer) error bars of the CMS data points correspond to the statistical and systematic (and the additional extrapolation) uncertainties added in quadrature.

background has been subtracted. Here as well, the data are consistent with a weakly rising cross section with energy, as predicted by the models.

B. Summary of results

Table IV presents the summary of the cross section measurements illustrated in the previous sections, together with the kinematic region covered by each measurement. The method used for the cross section extraction (LRG or MBR) is given as well. The $\sigma_{\text{no-CASTOR}}$, σ_{CASTOR} , and σ_{CG} cross sections are measured from all the events passing the LRG selection (Sec. VIII). The σ^{SDvis} , $\sigma_{\text{CASTOR}}^{\text{DDvis}}$, and $\sigma_{\text{CG}}^{\text{DDvis}}$ cross sections are extracted from the latter ones by subtracting the background contribution from other processes as predicted by the PYTHIA 8 MBR simulation (Sec. IX). In addition, σ^{DDvis} is calculated from the combination of $\sigma_{\text{CASTOR}}^{\text{DDvis}}$ and $\sigma_{\text{CG}}^{\text{DDvis}}$. Finally, the σ^{SD} and σ^{DD} cross sections (Sec. IX A) are calculated by extrapolating σ^{SDvis} and σ^{DDvis} to the region of lower diffractive masses using the mass dependence of the cross section predicted by PYTHIA 8 MBR.

X. PSEUDORAPIDITY GAP CROSS SECTION

This section presents the results of an alternative approach to the study of diffractive events, in which the data are analyzed in terms of the widest pseudorapidity gap adjacent to the edge of the detector [40]. In each event, particles are first ordered in η , and the largest pseudorapidity gap, $\Delta\eta^{\text{F}}$, is determined as $\Delta\eta^{\text{F}} = \max(|\eta_{\text{min}} - \eta^-|, |\eta_{\text{max}} - \eta^+|)$, where $\eta^{\pm} = \pm 4.7$ are the detector edges in η , and η_{max} (η_{min}) is the highest (lowest) η of the PF objects in the event (see Fig. 3).

The analysis is based on a minimum bias data sample, selected as described in Sec. IV, with negligible pileup (0.006), and corresponding to an integrated luminosity of $20.3 \mu\text{b}^{-1}$. The uncorrected distribution of the pseudorapidity gap size is shown in Fig. 13, along with the predictions of various MC models. A wider bin width is used at low $\Delta\eta^{\text{F}}$ to account for the lower spatial resolution in the forward region.

A. Corrections for experimental effects

Interactions of the beam protons with the residual gas particles in the beam pipe or inside the detector region affect the pseudorapidity gap distribution in data. The overall beam-induced background, integrated over the full measurement region, is about 0.7%. After the subtraction of this background, the differential cross section $d\sigma/d\Delta\eta^{\text{F}}$ is determined according to the formula

$$\frac{d\sigma}{d\Delta\eta^{\text{F}}} = \frac{N^{\text{evt}}}{T_{\epsilon} \mathcal{L}(\Delta\eta^{\text{F}})_{\text{bin}}}, \quad (6)$$

TABLE IV. Measured diffractive cross sections in regions of M_X (or $\xi_X = M_X^2/s$), M_Y (or $\xi_Y = M_Y^2/s$), and $\Delta\eta$ ($\Delta\eta = -\log \xi$, where $\xi = M_X^2 M_Y^2 / (s m_p^2)$ for DD). The method used for the cross section extraction is indicated as LRG for calculations involving all events selected in the LRG samples, and as MBR for calculations that involve background subtraction or extrapolation based on the prediction of the PYTHIA 8 MBR simulation. The first and the second errors in the data correspond to the statistical and systematic uncertainties, respectively. For σ^{SD} and σ^{DD} , the third errors correspond to the extrapolation uncertainties.

Cross section	M_X or ξ_X range	M_Y or ξ_Y range	$\Delta\eta$ range	Result (mb)
LRG				
$\sigma_{\text{no-CASTOR}}$	$-5.5 < \log \xi_X < -2.5$	$\log_{10} M_Y < 0.5$...	$2.99 \pm 0.02^{+0.32}_{-0.29}$
σ_{CASTOR}	$-5.5 < \log \xi_X < -2.5$	$0.5 < \log_{10} M_Y < 1.1$...	$1.18 \pm 0.02 \pm 0.13$
σ_{CG}	$\log_{10} M_X > 1.1$	$\log_{10} M_Y > 1.1$	$\Delta\eta > 3$	$0.58 \pm 0.01^{+0.13}_{-0.11}$
MBR				
σ^{SDvis}	$-5.5 < \log \xi_X < -2.5$ $M_X = m_p$	$M_Y = m_p$ $-5.5 < \log \xi_Y < -2.5$...	$4.06 \pm 0.04^{+0.69}_{-0.63}$
$\sigma_{\text{CASTOR}}^{\text{DDvis}}$	$-5.5 < \log \xi_X < -2.5$	$0.5 < \log_{10} M_Y < 1.1$...	$1.06 \pm 0.02 \pm 0.12$
$\sigma_{\text{CG}}^{\text{DDvis}}$	$\log_{10} M_X > 1.1$	$\log_{10} M_Y > 1.1$	$\Delta\eta > 3$	$0.56 \pm 0.01^{+0.15}_{-0.13}$
σ^{DDvis}	$-5.5 < \log \xi_X < -2.5$	$0.5 < \log_{10} M_Y < 1.1$...	$2.69 \pm 0.04^{+0.29}_{-0.30}$
	$0.5 < \log_{10} M_X < 1.1$	$-5.5 < \log \xi_Y < -2.5$...	
	$\log_{10} M_X > 1.1$	$\log_{10} M_Y > 1.1$	$\Delta\eta > 3$	
MBR				
σ^{SD}	$\xi_X < 0.05$	$M_Y = m_p$...	$8.84 \pm 0.08^{+1.49+1.17}_{-1.38-0.37}$
	$M_X = m_p$	$\xi_Y < 0.05$...	
σ^{DD}	$\Delta\eta > 3$	$5.17 \pm 0.08^{+0.55+1.62}_{-0.57-0.51}$

where N^{evt} is the number of events in the bin, corrected for migration effects, T_ϵ the trigger efficiency, \mathcal{L} the integrated luminosity, and $(\Delta\eta^{\text{F}})_{\text{bin}}$ the bin width.

The trigger efficiency is obtained from a comparison with zero-bias data where no trigger requirements were applied. In order to have a satisfactory correlation between the generated and reconstructed values of $\Delta\eta^{\text{F}}$, and hence a reliable correction for bin-migration effects, the cross section is evaluated for events with at least one

stable final-state particle of transverse momentum $p_{\text{T}} > 200$ MeV in the region of $|\eta| < 4.7$. The migration corrections are evaluated with the iterative Bayesian unfolding technique [28], as implemented in the ROOUNFOLD package [29], with a single iteration. The response matrix is obtained with PYTHIA 8 MBR ($\epsilon = 0.08$). The cross section is measured only for $\Delta\eta^{\text{F}} < 8.4$, so as to avoid regions where the trigger inefficiency and the unfolding uncertainty are large.

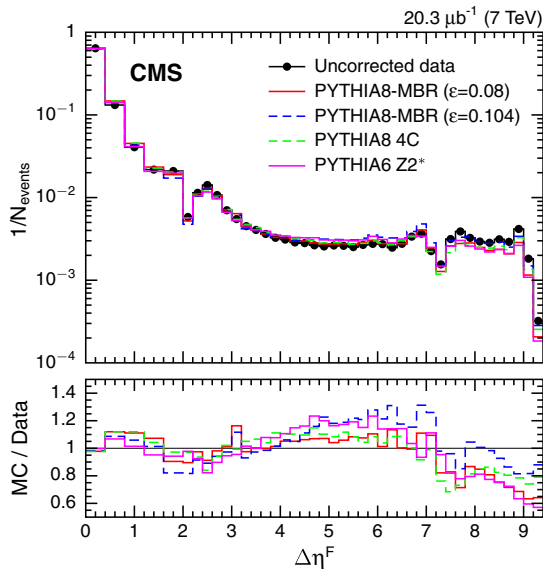


FIG. 13 (color online). Uncorrected $\Delta\eta^{\text{F}}$ distribution compared to various detector-level MC predictions.

B. Corrected results

Figure 14 shows the unfolded and fully corrected differential cross section $d\sigma/d\Delta\eta^{\text{F}}$ for events with at least one particle with $p_{\text{T}} > 200$ MeV in the region of $|\eta| < 4.7$. As the statistical uncertainty is negligible, only the systematic uncertainty, discussed in Sec. XI, is shown. The predictions from PYTHIA 8 MBR ($\epsilon = 0.08$ and 0.104), PYTHIA 8 tune 4C, and PYTHIA 6 tune Z2* are also given. The MC predictions show that in the pseudorapidity range covered by the measurement, $|\eta| < 4.7$, a large fraction of nondiffractive events can be suppressed by means of the $\Delta\eta^{\text{F}} > 3$ requirement.

The present results are consistent with those from the ATLAS Collaboration [4], as shown in Fig. 15. The ATLAS measurement uses all stable final-state particles with $p_{\text{T}} > 200$ MeV over the region $|\eta| < 4.9$. According to the PYTHIA 8 MBR simulation, the difference in the η coverage between the two experiments causes changes in the $\Delta\eta^{\text{F}}$ distribution of up to 5%.

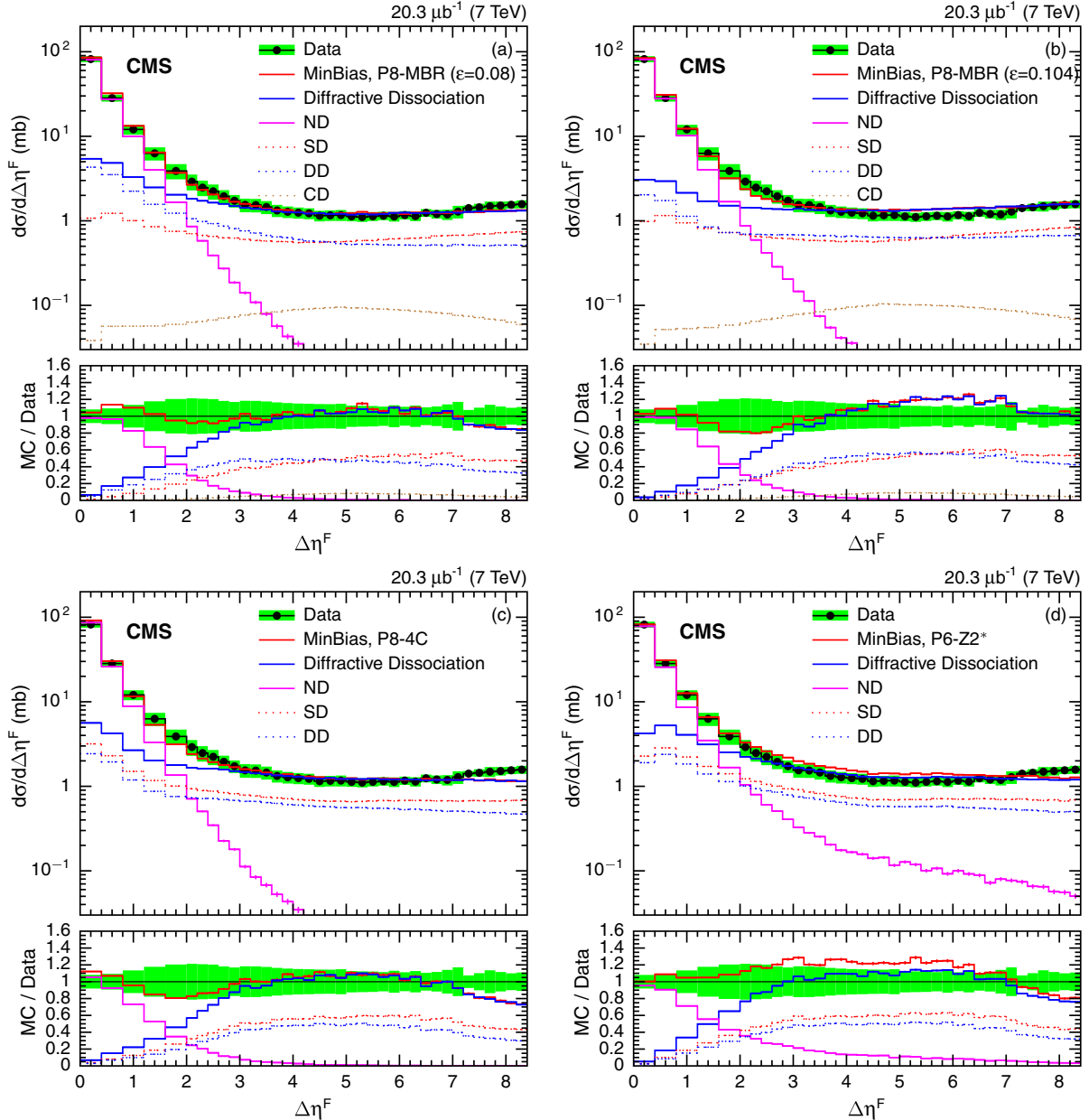


FIG. 14 (color online). Differential cross section $d\sigma/d\Delta\eta^F$ for stable particles with $p_T > 200$ MeV in the region $|\eta| < 4.7$ compared to the corresponding predictions of (a) PYTHIA 8 MBR ($\epsilon = 0.08$), (b) PYTHIA 8 MBR ($\epsilon = 0.104$), (c) PYTHIA 8 tune 4C, and (d) PYTHIA 6 tune Z2*. The band around the data points represents the total systematic uncertainty, which is discussed in Sec. XI.

XI. SYSTEMATIC UNCERTAINTIES

Systematic uncertainties are obtained by varying the selection criteria and modifying the analysis. The following sources of systematic uncertainties are taken into account for the results presented in Secs. VI–X:

- (i) HF energy scale: varied in the MC simulations by $\pm 10\%$, to reflect the energy scale uncertainty estimated for data.
- (ii) PF energy thresholds: raised by 10%, based on dedicated studies of the detector noise.

- (iii) Modeling of the diffractive interaction and the hadronization process: the hadronization parameters in the nominal PYTHIA 8 MBR MC sample are tuned to describe the multiplicity and p_T spectra of diffractive systems in pp and $p\bar{p}$ collisions at $\sqrt{s} \leq 1800$ GeV [41]. The corresponding uncertainty is estimated by taking the difference (see Appendix B) between the results obtained with PYTHIA 8 MBR and those obtained with PYTHIA 8 4C (Secs. VI–IX), or PYTHIA 8 4C and PYTHIA 6-Z2* (Sec. X).

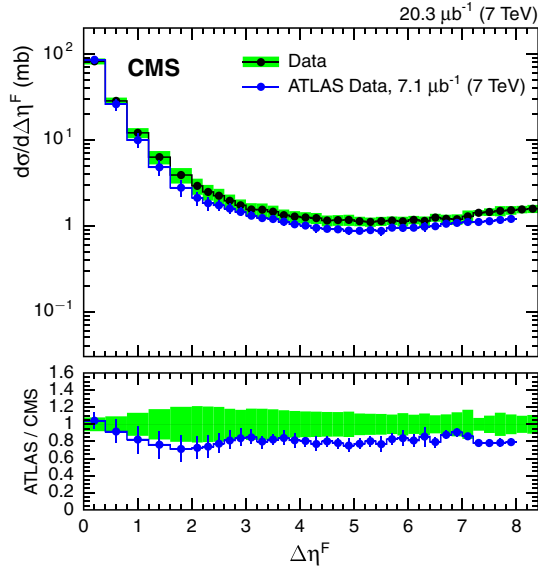


FIG. 15 (color online). Differential cross section $d\sigma/d\Delta\eta^F$ for stable particles with $p_T > 200$ MeV in the region $|\eta| < 4.7$ compared to the ATLAS result [4]; distributions (top) and ratio to the CMS measurement (bottom). The band represents the total systematic uncertainty in the CMS measurement, while the uncertainty in the ATLAS measurement is shown by the error bars. The stable-particle level definitions of the two measurements are not exactly identical: CMS measures the forward pseudorapidity gap size starting from $\eta = \pm 4.7$, whereas the ATLAS limit is $\eta = \pm 4.9$.

- (iv) The uncertainty in the integrated luminosity measurement is $\pm 4\%$ [42,43].

In addition, the following checks are carried out for the results shown in Secs. VI–IX:

- (i) CASTOR energy scale [44]: changed in the simulation by $\pm 20\%$, to reflect the estimated energy scale uncertainty for the data.
- (ii) CASTOR energy threshold in each sector [16]: changed from the nominal 4σ to 3.5σ and 5σ , where σ is the pedestal width.
- (iii) CASTOR alignment uncertainty [45]: the simulated CASTOR position in the plane transverse to the beamline is varied within the limits allowed by the condition that the MC description of the energy flow in CASTOR remains satisfactory. This corresponds to about 10 mm and 4 mm, for the left and right CASTOR sides, respectively.
- (iv) Trigger efficiency uncertainty: estimated from a comparison of efficiency curves between data (measured by using a control sample for which no trigger requirements were applied) and MC.
- (v) Background subtraction: backgrounds from DD and ND events in the SD sample, and from ND and SD in the DD sample are estimated with PYTHIA 8 MBR (Figs. 8 and 10). The corresponding uncertainty is estimated by varying their relative contributions by $\pm 10\%$ (average normalization uncertainty of the

TABLE V. Systematic uncertainties for the measurement of the σ^{SDvis} , $\sigma_{\text{CASTOR}}^{\text{DDvis}}$, and $\sigma_{\text{CG}}^{\text{DDvis}}$ cross sections; individual contributions, as well as total systematic and statistical uncertainties, are shown.

Source	Uncertainty (%)		
	σ^{SDvis}	$\sigma_{\text{CASTOR}}^{\text{DDvis}}$	$\sigma_{\text{CG}}^{\text{DDvis}}$
HF energy scale	10	1.6	23
PF thresholds	0.8	0.4	6.9
Diff. and had. modeling	10	4.3	0.4
Luminosity	4	4	4
CASTOR energy scale	0.5	0.9	0
CASTOR threshold	0.9	2.8	0
CASTOR alignment	2.6	8.3	0
Trigger	0.6	0.6	0.7
Background sub.	4.3	0.4	1.3
Total systematic	16	11	25
Statistical	0.9	1.8	1.3

model). The contribution from CD events in the SD and DD samples is negligible.

The total systematic uncertainty is obtained by summing all individual uncertainties in quadrature, separately for the positive and negative deviations from the nominal cross section values, leading to a total systematic uncertainty of up to 25%. Table V presents the summary of the systematic uncertainties for the measurement of the σ^{SDvis} , $\sigma_{\text{CASTOR}}^{\text{DDvis}}$, and $\sigma_{\text{CG}}^{\text{DDvis}}$ cross sections. The systematic uncertainties are significantly larger than the statistical ones, and the dominant sources are the HF energy scale and the modeling of diffraction and hadronization. For the $\sigma_{\text{CASTOR}}^{\text{DDvis}}$ cross section, also the uncertainty related to the CASTOR alignment is significant.

XII. SUMMARY

Measurements of diffractive dissociation cross sections in pp collisions at $\sqrt{s} = 7$ TeV have been presented in kinematic regions defined by the masses M_X and M_Y of the two final-state hadronic systems separated by the largest rapidity gap in the event. Differential cross sections are measured as a function of $\xi_X = M_X^2/s$ in the region $-5.5 < \log_{10}\xi_X < -2.5$, for $\log_{10}M_Y < 0.5$, dominated by single dissociation (SD), and $0.5 < \log_{10}M_Y < 1.1$, dominated by double dissociation (DD). The discrimination between the above two M_Y regions is performed by means of the CASTOR forward calorimeter. The cross sections integrated over these regions are $\sigma_{\text{no-CASTOR}} = 2.99 \pm 0.02(\text{stat})_{-0.29}^{+0.32}(\text{syst})$ mb and $\sigma_{\text{CASTOR}} = 1.18 \pm 0.02(\text{stat}) \pm 0.13(\text{syst})$ mb, respectively.

The inclusive pp cross section is also measured as a function of the width of the central pseudorapidity gap, $\Delta\eta$, for $\Delta\eta > 3$, $\log_{10}M_X > 1.1$, and $\log_{10}M_Y > 1.1$ (dominated by DD contributions). The corresponding integrated cross section is $\sigma_{\text{CG}} = 0.58 \pm 0.01(\text{stat})_{-0.11}^{+0.13}(\text{syst})$ mb.

The SD and DD cross sections in the above three regions, extracted by means of the PYTHIA 8 MBR simulation, which provides a good description of the data, are $\sigma^{\text{SDvis}} = 4.06 \pm 0.04(\text{stat})_{-0.63}^{+0.69}(\text{syst})$ mb (accounting for both $pp \rightarrow Xp$ and $pp \rightarrow pY$), $\sigma_{\text{CASTOR}}^{\text{DDvis}} = 1.06 \pm 0.02(\text{stat}) \pm 0.12(\text{syst})$ mb, and $\sigma_{\text{CG}}^{\text{DDvis}} = 0.56 \pm 0.01(\text{stat})_{-0.13}^{+0.15}(\text{syst})$ mb, respectively.

Extrapolations of the SD and DD cross sections to the regions $\xi < 0.05$ and $\Delta\eta > 3$, performed with PYTHIA 8 MBR, yield $\sigma^{\text{SD}} = 8.84 \pm 0.08(\text{stat})_{-1.38}^{+1.49}(\text{syst})_{-0.37}^{+1.17}(\text{extrap})$ mb and $\sigma^{\text{DD}} = 5.17 \pm 0.08(\text{stat})_{-0.57}^{+0.55}(\text{syst})_{-0.51}^{+1.62}(\text{extrap})$ mb, respectively.

In addition, the inclusive differential cross section $d\sigma/d\Delta\eta^F$ for events with a pseudorapidity gap adjacent to the edge of the detector is measured over 8.4 units of pseudorapidity.

These measurements are compared to results from other experiments as well as to phenomenological predictions. The data are consistent with the SD and DD cross sections weakly rising with energy, and provide new experimental constraints on the modeling of diffraction in hadronic interactions.

ACKNOWLEDGMENTS

We congratulate our colleagues in the CERN accelerator departments for the excellent performance of the LHC and thank the technical and administrative staffs at CERN and at other CMS institutes for their contributions to the success of the CMS effort. In addition, we gratefully acknowledge the computing centers and personnel of the Worldwide LHC Computing Grid for delivering so effectively the computing infrastructure essential to our analyses. Finally, we acknowledge the enduring support for the construction and operation of the LHC and the CMS detector provided by the following funding agencies: the Austrian Federal Ministry of Science, Research and Economy and the Austrian Science Fund; the Belgian Fonds de la Recherche Scientifique, and Fonds voor Wetenschappelijk Onderzoek; the Brazilian Funding Agencies (CNPq, CAPES, FAPERJ, and FAPESP); the Bulgarian Ministry of Education and Science; CERN; the Chinese Academy of Sciences, Ministry of Science and Technology, and National Natural Science Foundation of China; the Colombian Funding Agency (COLCIENCIAS); the Croatian Ministry of Science, Education and Sport, and the Croatian Science Foundation; the Research Promotion Foundation, Cyprus; the Ministry of Education and Research, Estonian Research Council via IUT23-4 and IUT23-6 and European Regional Development Fund, Estonia; the Academy of Finland, Finnish Ministry of Education and Culture, and Helsinki Institute of Physics; the Institut National de Physique Nucléaire et de Physique des Particules/CNRS, and Commissariat à l'Énergie Atomique et aux Énergies Alternatives/CEA, France; the

Bundesministerium für Bildung und Forschung, Deutsche Forschungsgemeinschaft, and Helmholtz-Gemeinschaft Deutscher Forschungszentren, Germany; the General Secretariat for Research and Technology, Greece; the National Scientific Research Foundation, and National Innovation Office, Hungary; the Department of Atomic Energy and the Department of Science and Technology, India; the Institute for Studies in Theoretical Physics and Mathematics, Iran; the Science Foundation, Ireland; the Istituto Nazionale di Fisica Nucleare, Italy; the Ministry of Science, ICT and Future Planning, and National Research Foundation (NRF), Republic of Korea; the Lithuanian Academy of Sciences; the Ministry of Education, and University of Malaya (Malaysia); the Mexican Funding Agencies (CINVESTAV, CONACYT, SEP, and UASLP-FAI); the Ministry of Business, Innovation and Employment, New Zealand; the Pakistan Atomic Energy Commission; the Ministry of Science and Higher Education and the National Science Centre, Poland; the Fundação para a Ciência e a Tecnologia, Portugal; JINR, Dubna; the Ministry of Education and Science of the Russian Federation, the Federal Agency of Atomic Energy of the Russian Federation, Russian Academy of Sciences, and the Russian Foundation for Basic Research; the Ministry of Education, Science and Technological Development of Serbia; the Secretaría de Estado de Investigación, Desarrollo e Innovación and Programa Consolider-Ingenio 2010, Spain; the Swiss Funding Agencies (ETH Board, ETH Zurich, PSI, SNF, UniZH, Canton Zurich, and SER); the Ministry of Science and Technology, Taipei; the Thailand Center of Excellence in Physics, the Institute for the Promotion of Teaching Science and Technology of Thailand, Special Task Force for Activating Research and the National Science and Technology Development Agency of Thailand; the Scientific and Technical Research Council of Turkey, and Turkish Atomic Energy Authority; the National Academy of Sciences of Ukraine, and State Fund for Fundamental Researches, Ukraine; the Science and Technology Facilities Council, UK; the US Department of Energy, and the US National Science Foundation. Individuals have received support from the Marie-Curie program and the European Research Council and EPLANET (European Union); the Leventis Foundation; the A. P. Sloan Foundation; the Alexander von Humboldt Foundation; the Belgian Federal Science Policy Office; the Fonds pour la Formation à la Recherche dans l'Industrie et dans l'Agriculture (FRIA-Belgium); the Agentschap voor Innovatie door Wetenschap en Technologie (IWT-Belgium); the Ministry of Education, Youth and Sports (MEYS) of the Czech Republic; the Council of Science and Industrial Research, India; the HOMING PLUS program of the Foundation for Polish Science, cofinanced from European Union, Regional Development Fund; the Compagnia di San Paolo (Torino); the Consorzio per la

Fisica (Trieste); MIUR project 20108T4XTM (Italy); the Thalis and Aristeia programs cofinanced by EU-ESF and the Greek NSRF; and the National Priorities Research Program by Qatar National Research Fund.

APPENDIX A: SD/DD EXTRAPOLATION FACTORS

Figure 16 shows the $\xi_X = M_X^2/s$ dependence of the SD cross section for the PYTHIA 8 4C, PYTHIA 6 Z2*, PHOJET, QGSJET-II 03, QGSJET-II 04, and EPOS simulations, compared to the nominal PYTHIA 8 MBR simulation used in this

analysis for two regions of ξ_X , $-5.5 < \log_{10}\xi_X < -2.5$ (dashed yellow) and $\xi_X < 0.05$ (solid khaki). In addition, the PYTHIA 8 MBR simulations with values of α' and ε changed to $\alpha' = 0.125 \text{ GeV}^{-2}$, $\varepsilon = 0.104$, and $\varepsilon = 0.07$ (one parameter changed at a time) are also included to provide a scale for their effect on the cross sections. Extrapolation factors, defined as the ratios of $\sigma^{\text{SD}}(\xi_X < 0.05)$ to $\sigma^{\text{SD,vis}}(-5.5 < \log_{10}\xi_X < -2.5)$, are presented for each of the above ten MC models in Table VI. For each model, two ratios are evaluated, one in which both cross sections (numerator and denominator of the extrapolation factor) are calculated by using the same generator (f^{SD}),

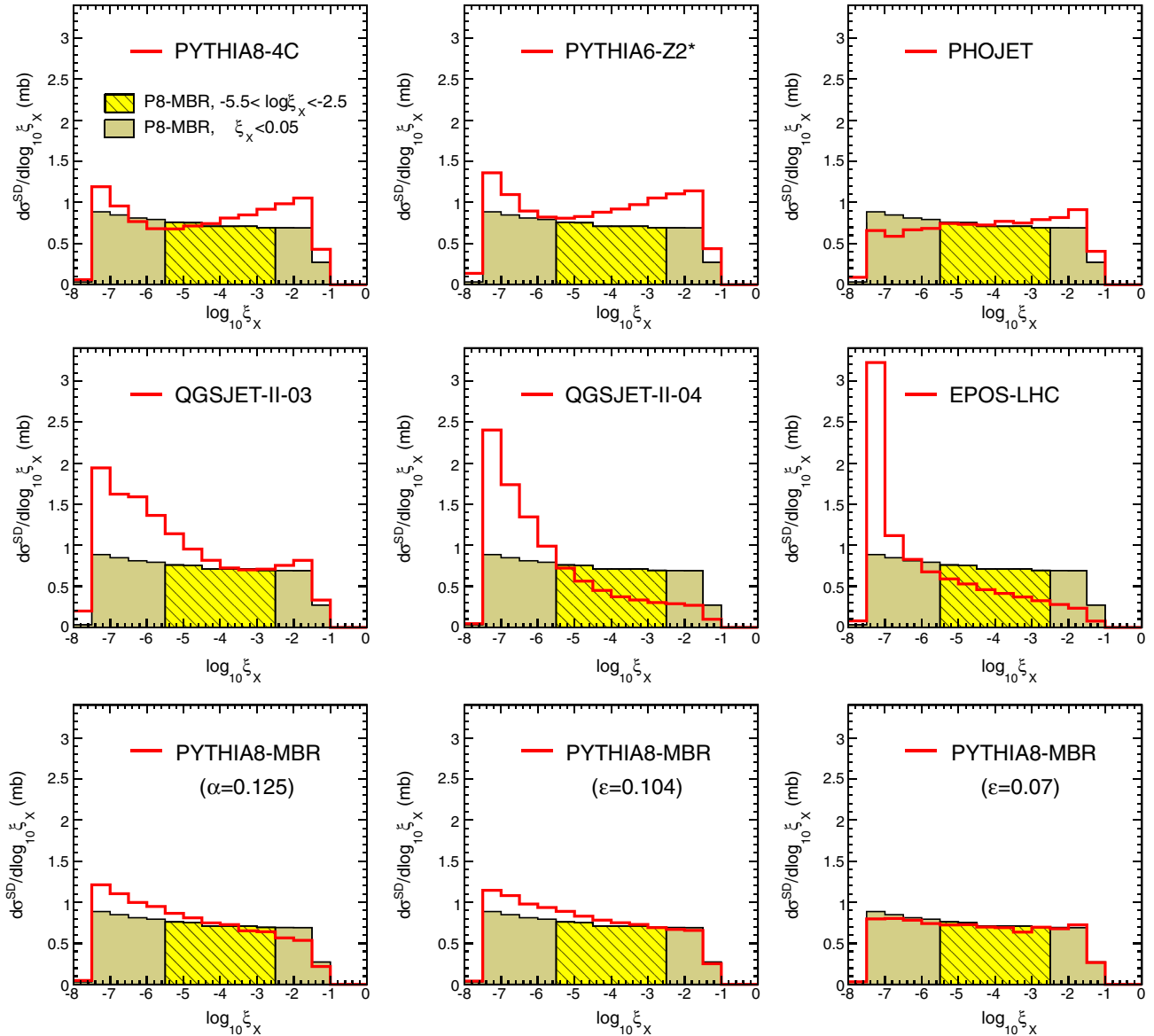


FIG. 16 (color online). Generator-level SD cross section as a function of $\xi_X = M_X^2/s$ for $\xi_X < 0.05$, shown for PYTHIA 8 4C, PYTHIA 6 Z2*, PHOJET, QGSJET-II 03, QGSJET-II 04, EPOS MC, and PYTHIA 8 MBR with the parameters of the Pomeron trajectory changed from the nominal values ($\alpha' = 0.25 \text{ GeV}^{-2}$, $\varepsilon = 0.08$) to $\alpha' = 0.125 \text{ GeV}^{-2}$, $\varepsilon = 0.104$, and $\varepsilon = 0.07$ (one parameter changed at a time). The nominal PYTHIA 8 MBR simulation is presented in each plot for the two regions of ξ_X , $-5.5 < \log_{10}\xi_X < -2.5$ (dashed yellow) and $\xi_X < 0.05$ (solid khaki), used to extrapolate the measured SD cross section (from the dashed (yellow) to the solid (khaki) regions).

TABLE VI. Extrapolation factors $f^{\text{SD}} = \sigma_1^{\text{SD}}(\xi < 0.05)/\sigma_1^{\text{SD,vis}}$ and $f_{\text{MBR}}^{\text{SD}} = \sigma_1^{\text{SD}}(\xi < 0.05)/\sigma_{\text{MBR}}^{\text{SD,vis}}$ from the visible to total SD ($\xi < 0.05$) cross section for each MC model considered ($i = 1-10$). The relative change with respect to the value obtained by PYTHIA 8 MBR with $\varepsilon = 0.08$ is shown in parenthesis.

i	MC model	f^{SD}	$f_{\text{MBR}}^{\text{SD}}$
1	PYTHIA 8 MBR ($\varepsilon = 0.08$)	2.18 (1.00)	2.18 (1.00)
2	PYTHIA 8 4C	2.32 (1.06)	2.51 (1.15)
3	PYTHIA 6 Z2*	2.29 (1.06)	2.89 (1.34)
4	PHOJET	2.06 (0.95)	2.18 (1.00)
5	QGSJET-II 03	2.72 (1.25)	3.19 (1.46)
6	QGSJET-II 04	3.62 (1.66)	2.30 (1.06)
7	EPOS	3.44 (1.58)	2.15 (0.99)
8	PYTHIA 8 MBR ($\alpha' = 0.125$)	2.27 (1.04)	2.34 (1.07)
9	PYTHIA 8 MBR ($\varepsilon = 0.104$)	2.23 (1.03)	2.42 (1.11)
10	PYTHIA 8 MBR ($\varepsilon = 0.07$)	2.16 (0.99)	2.09 (0.96)

and another where the prediction of the $\sigma^{\text{SD,vis}}(-5.5 < \log_{10}\xi_X < -2.5)$ is calculated by using the nominal PYTHIA 8 MBR with $\varepsilon = 0.08$ ($f_{\text{MBR}}^{\text{SD}}$). The numbers in brackets in Table VI show the relative change of the extrapolation factors with respect to the nominal PYTHIA 8 MBR simulation; the one related to f^{SD} is sensitive to the difference in the shape of the ξ_X (mass) distribution, while the one related to $f_{\text{MBR}}^{\text{SD}}$ is also sensitive to the normalization of the SD cross section.

Table VII shows the extrapolation factors for the DD case, defined as the ratios of $\sigma^{\text{DD}}(\Delta\eta > 3)$ to $\sigma^{\text{DD,vis}}$, again for two cases: one when both cross sections are calculated with the same MC generator (f^{DD}), and the other when the predicted $\sigma^{\text{DD,vis}}$ cross section is from PYTHIA 8 MBR with $\varepsilon = 0.08$ ($f_{\text{MBR}}^{\text{DD}}$). The relative change of the extrapolation factors with respect to the nominal PYTHIA 8 MBR simulation is shown in brackets; the one related to f^{DD} accounts for the difference in the shape of the M_X and M_Y dependence, while the one related to $f_{\text{MBR}}^{\text{DD}}$ is sensitive to the difference in the mass dependence and the normalization of the DD cross section.

APPENDIX B: MC HADRONIZATION MODELS

In this section, the hadronization models used to generate particle spectra in the simulations introduced in Sec. III are

TABLE VII. Extrapolation factors $f^{\text{DD}} = \sigma_1^{\text{DD}}(\Delta\eta > 3)/\sigma_1^{\text{DD,vis}}$ and $f_{\text{MBR}}^{\text{DD}} = \sigma_1^{\text{DD}}(\Delta\eta > 3)/\sigma_{\text{MBR}}^{\text{DD,vis}}$ from the visible to total DD ($\Delta\eta > 3$) cross section for each MC model considered ($i = 1-10$). The relative change with respect to the value obtained by PYTHIA 8 MBR with $\varepsilon = 0.08$ is shown in parentheses.

i	MC model	f^{DD}	$f_{\text{MBR}}^{\text{DD}}$
1	PYTHIA 8 MBR ($\varepsilon = 0.08$)	1.92 (1.00)	1.92 (1.00)
2	PYTHIA 8 4C	2.52 (1.32)	1.86 (0.97)
3	PYTHIA 6 Z2*	2.39 (1.25)	2.15 (1.13)
4	PHOJET	1.80 (0.94)	0.60 (0.31)
5	QGSJET-II 03
6	QGSJET-II 04	2.04 (1.07)	0.94 (0.49)
7	EPOS	4.73 (2.47)	1.93 (1.01)
8	PYTHIA 8 MBR ($\alpha' = 0.125$)	1.97 (1.03)	2.32 (1.21)
9	PYTHIA 8 MBR ($\varepsilon = 0.104$)	2.00 (1.04)	2.37 (1.24)
10	PYTHIA 8 MBR ($\varepsilon = 0.07$)	1.88 (0.98)	1.73 (0.90)

compared to a reference model [41,46] based on data. The model correctly describes the charged-particle multiplicity and p_T spectra of diffractive and inclusive proton-(anti)proton data for $\sqrt{s} \leq 1800$ GeV by assuming that the Pomeron-proton collision produces a system of mass M_X that hadronizes as if it had been produced in a nondiffractive proton-proton collision at $\sqrt{s} = M_X$. Figures 17 and 18 show the charged-particle multiplicity distributions and p_T spectra for the SD process for three ranges of M_X : $5.6 < M_X < 10$ GeV, $32 < M_X < 56$ GeV, and $178 < M_X < 316$ GeV, for the PYTHIA 8 MBR, PYTHIA 8 4C, PYTHIA 6 Z2*, PHOJET, QGSJET-II 03, QGSJET-II 04, and EPOS simulations, compared to the reference model quoted above. The following conclusions can be drawn: PYTHIA 6 Z2*, QGSJET-II 03, QGSJET-II 04, and EPOS predict smaller multiplicities and harder p_T spectra than the model of Ref. [41,46]; PYTHIA 8 4C agrees with the mean values of the multiplicity distributions, but predicts narrower widths, and harder p_T spectra; PHOJET predicts multiplicity distributions consistent with the reference model with harder p_T spectra; and PYTHIA 8 MBR agrees with the reference model in both multiplicity and p_T spectra. The latter is an expected result, as the hadronization parameters of the PYTHIA 8 MBR simulation have been tuned to follow the reference model.

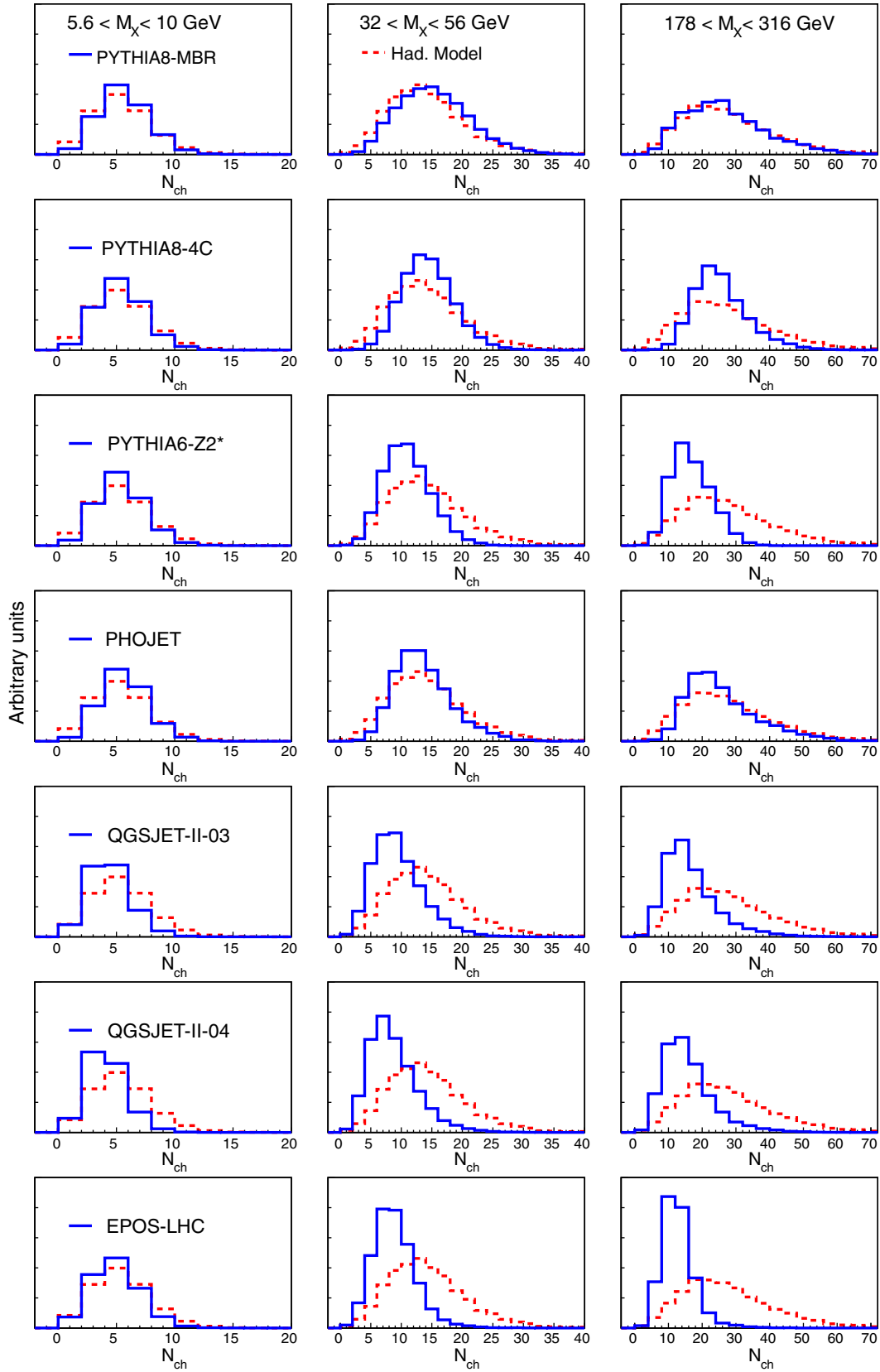


FIG. 17 (color online). Charged-particle multiplicity (N_{ch}) distributions (area-normalized) in the PYTHIA 8 MBR, PYTHIA 8 4C, PYTHIA 6 Z2*, PHOJET, QGSJET-II 03, QGSJET-II 04, and EPOS MC simulations (rows) in three bins of M_X (columns) in SD collisions, compared to a reference hadronization model (dashed line), which describes the available data at $\sqrt{s} \leq 1800$ GeV [41,46].

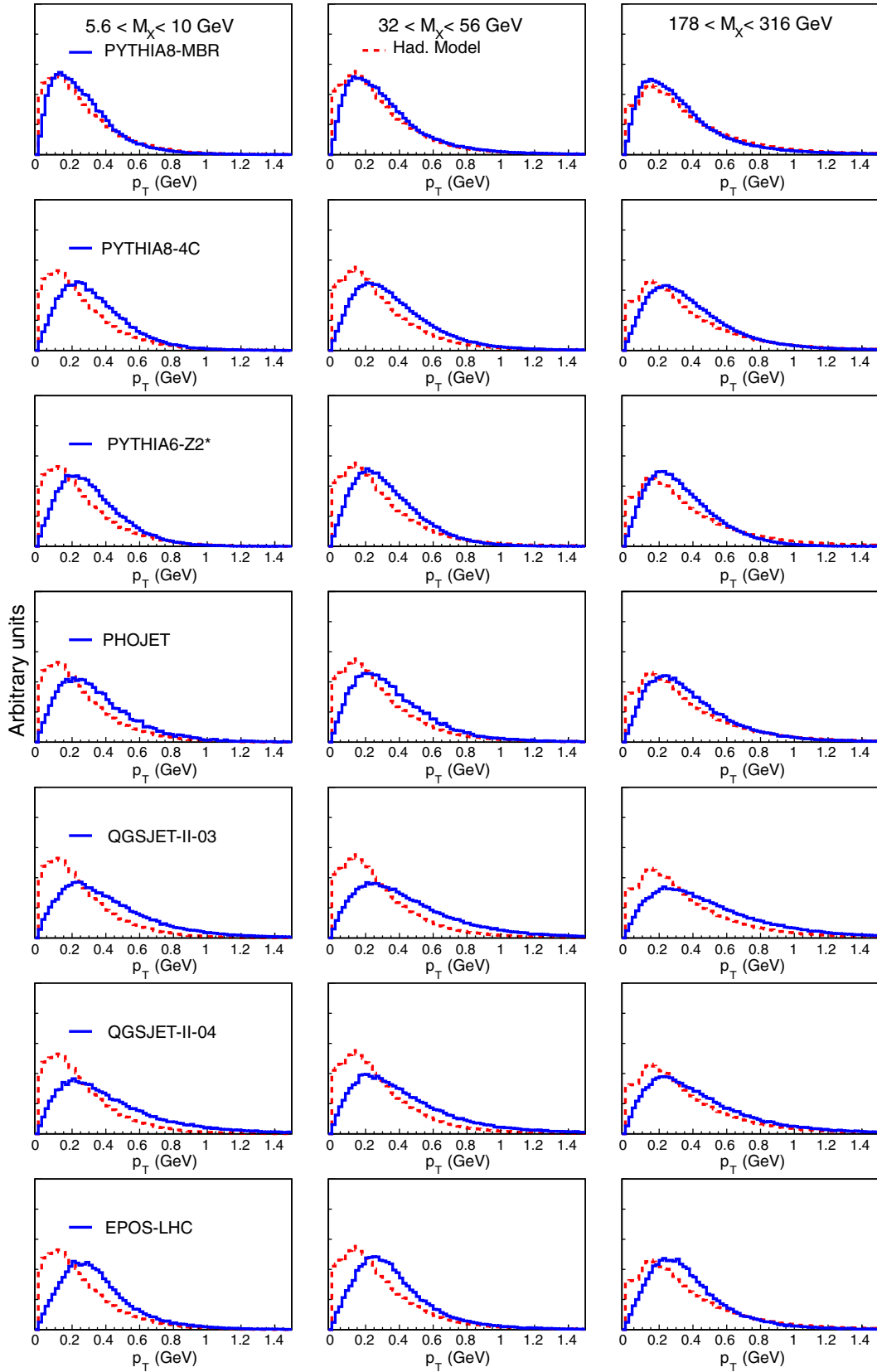


FIG. 18 (color online). Transverse-momentum (p_T) distributions (area-normalized) in the PYTHIA 8 MBR, PYTHIA 8 4C, PYTHIA 6 Z2*, PHOJET, QGSJET-II 03, QGSJET-II 04, EPOS MC simulations (rows) in three bins of M_X (columns) in SD collisions, compared to a reference hadronization model (dashed line), which describes the available data at $\sqrt{s} \leq 1800$ GeV [41,46].

- [1] S. Donnachie, Hans Gunter Dosch, O. Nachtmann, and P. Landshoff, *Pomeron Physics and QCD* (Cambridge University Press, Cambridge, England, 2002).
- [2] G. Antchev *et al.* (TOTEM), Double Diffractive Cross-Section Measurement in the Forward Region at LHC, *Phys. Rev. Lett.* **111**, 262001 (2013).
- [3] ALICE Collaboration, Measurement of inelastic, single- and double-diffraction cross sections in proton-proton collisions at the LHC with ALICE, *Eur. Phys. J. C* **73**, 2456 (2013).
- [4] ATLAS Collaboration, Rapidity gap cross sections measured with the ATLAS detector in pp collisions at $\sqrt{s} = 7$ TeV, *Eur. Phys. J. C* **72**, 1926 (2012).
- [5] V. Andreev *et al.*, Performance studies of a full-length prototype for the CASTOR forward calorimeter at the CMS experiment, *Eur. Phys. J. C* **67**, 601 (2010).
- [6] CMS Collaboration, The CMS experiment at the CERN LHC, *J. Instrum.* **3**, S08004 (2008).
- [7] T. Sjöstrand, S. Mrenna, and P. Skands, PYTHIA 6.4 physics and manual, *J. High Energy Phys.* **05** (2006) 026.
- [8] T. Sjöstrand, S. Mrenna, and P. Skands, A brief introduction to PYTHIA 8.1, *Comput. Phys. Commun.* **178**, 852 (2008).
- [9] R. Ciesielski and K. Goulianos, *Proc. Sci.*, ICHEP (2013) 301 [arXiv:1205.1446].
- [10] K. Goulianos, Hadronic diffraction: Where do we stand? in *Results and perspectives in particle physics: 18th Rencontres de Physique de la Vallée d'Aoste*, 2004, edited by Mario Greco, arXiv:hep-ph/0407035.
- [11] K. Goulianos, Diffraction in QCD, arXiv:hep-ph/0203141.
- [12] A. Donnachie and P. Landshoff, Elastic scattering and diffraction dissociation, *Nucl. Phys.* **B244**, 322 (1984).
- [13] A. Donnachie and P. Landshoff, Total cross-sections, *Phys. Lett. B* **296**, 227 (1992).
- [14] R. J. M. Covolan, J. Montanha, and K. Goulianos, A new determination of the soft pomeron intercept, *Phys. Lett. B* **389**, 176 (1996).
- [15] K. Goulianos, Pomeron intercept and slope: A QCD connection, *Phys. Rev. D* **80**, 111901 (2009).
- [16] CMS Collaboration, Study of the underlying event at forward rapidity in pp collisions at $\sqrt{s} = 0.9, 2.76,$ and 7 TeV, *J. High Energy Phys.* **04** (2013) 072.
- [17] Fritz W. Bopp, R. Engel, and J. Ranft, Rapidity gaps and the PHOJET Monte Carlo, arXiv:hep-ph/9803437.
- [18] R. Engel, Photoproduction within the two-component dual parton model: Amplitudes and cross-sections, *Z. Phys. C* **66**, 203 (1995).
- [19] S. Ostapchenko, QGSJET-II: Towards reliable description of very high energy hadronic interactions, *Nucl. Phys. B, Proc. Suppl.* **151**, 143 (2006).
- [20] S. Ostapchenko, Monte Carlo treatment of hadronic interactions in enhanced Pomeron scheme: I. QGSJET-II model, *Phys. Rev. D* **83**, 014018 (2011).
- [21] K. Werner, F.-M. Liu, and T. Pierog, Parton ladder splitting and the rapidity dependence of transverse momentum spectra in deuteron-gold collisions at RHIC, *Phys. Rev. C* **74**, 044902 (2006).
- [22] David d'Enterria, R. Engel, T. Pierog, S. Ostapchenko, and K. Werner, Constraints from the first LHC data on hadronic event generators for ultra-high energy cosmic-ray physics, *Astropart. Phys.* **35**, 98 (2011).
- [23] S. Agostinelli *et al.* (GEANT4), GEANT4—a simulation toolkit, *Nucl. Instrum. Methods Phys. Res., Sect. A* **506**, 250 (2003).
- [24] CMS Collaboration, Transverse momentum and pseudorapidity distributions of charged hadrons in pp collisions at $\sqrt{s} = 0.9$ and 2.36 TeV, *J. High Energy Phys.* **02** (2010) 041.
- [25] CMS Collaboration, Report No. CMS-PAS-PFT-09-001, 2009.
- [26] CMS Collaboration, Report No. CMS-PAS-PFT-10-001, 2010.
- [27] J. D. Bjorken, Rapidity gaps and jets as a new-physics signature in very-high-energy hadron-hadron collisions, *Phys. Rev. D* **47**, 101 (1993).
- [28] G. D'Agostini, A multidimensional unfolding method based on Bayes' theorem, *Nucl. Instrum. Methods Phys. Res., Sect. A* **362**, 487 (1995).
- [29] T. Auye, Unfolding algorithms and tests using RooUnfold, in *PHYSTAT 2011 Workshop on Statistical Issues Related to Discovery Claims in Search Experiments and Unfolding*, edited by H. Prosper and L. Lyons (CERN, Geneva, Switzerland, 2011), p. 313.
- [30] CMS Collaboration, Measurement of the inelastic proton-proton cross section at $\sqrt{s} = 7$ TeV, *Phys. Lett. B* **722**, 5 (2013).
- [31] F. Abe *et al.* (CDF), Measurement of $\bar{p}p$ single diffraction dissociation at $\sqrt{s} = 546$ GeV and 1800 GeV, *Phys. Rev. D* **50**, 5535 (1994).
- [32] Norman A. Amos *et al.* (E710), Diffraction dissociation in $\bar{p}p$ collisions at $\sqrt{s} = 1.8$ -TeV, *Phys. Lett. B* **301**, 313 (1993).
- [33] D. Bernard *et al.* (UA4), The cross section of diffraction dissociation at the CERN SPS collider, *Phys. Lett. B* **186**, 227 (1987).
- [34] M. G. Albrow *et al.* (CHLM), Inelastic diffractive scattering at the CERN ISR, *Nucl. Phys.* **B108**, 1 (1976).
- [35] J. C. M. Armitage, P. Benz, G. J. Bobbink, F. C. Erne, P. Kooijman, F. K. Loebinger, A. A. MacBeth, H. E. Montgomery, P. G. Murphy, A. Rudge, J. C. Sens, D. Stork, and J. Timmer, Diffraction dissociation in proton-proton collisions at ISR energies, *Nucl. Phys.* **B194**, 365 (1982).
- [36] E. Gotsman, E. Levin, and U. Maor, Description of LHC data in a soft interaction model, *Phys. Lett. B* **716**, 425 (2012).
- [37] A. B. Kaidalov and M. G. Poghosyan, Predictions of the quark-gluon string model for pp at LHC, *Eur. Phys. J. C* **67**, 397 (2010).
- [38] A. B. Kaidalov and M. G. Poghosyan, Predictions for proton-proton interaction cross-sections at LHC, arXiv:1109.3697.
- [39] T. Affolder *et al.* (CDF), Double Diffraction Dissociation at the Fermilab Tevatron Collider, *Phys. Rev. Lett.* **87**, 141802 (2001).
- [40] E. Nurse and S. Sen, Methods to select soft diffraction dissociation at the LHC, arXiv:1107.2688.
- [41] K. Goulianos, A new statistical description of hadronic and e^+e^- multiplicity distributions, *Phys. Lett. B* **193**, 151 (1987).
- [42] CMS Collaboration, Report No. CMS-PAS-EWK-10-004, 2010.

[43] CMS Collaboration, Report No. CMS-DP-2011-002, 2011.

[44] CMS Collaboration, Report No. CMS-DP-2013-035, 2013.

[45] CMS Collaboration, Report No. CMS-DP-2014-014, 2014.

[46] G. Arnison *et al.* (UA1), Transverse momentum spectra for charged particles at the CERN proton-antiproton collider, *Phys. Lett. B* **118**, 167 (1982).

V. Khachatryan,¹ A. M. Sirunyan,¹ A. Tumasyan,¹ W. Adam,² T. Bergauer,² M. Dragicevic,² J. Erö,² C. Fabjan,^{2,b} M. Friedl,² R. Frühwirth,^{2,b} V. M. Ghete,² C. Hartl,² N. Hörmann,² J. Hrubec,² M. Jeitler,^{2,b} W. Kiesenhofer,² V. Knünz,² M. Krammer,^{2,b} I. Krätschmer,² D. Liko,² I. Mikulec,² D. Rabady,^{2,c} B. Rahbaran,² H. Rohringer,² R. Schöfbeck,² J. Strauss,² A. Taurok,² W. Treberer-Treberspurg,² W. Waltenberger,² C.-E. Wulz,^{2,b} V. Mossolov,³ N. Shumeiko,³ J. Suarez Gonzalez,³ S. Alderweireldt,⁴ M. Bansal,⁴ S. Bansal,⁴ T. Cornelis,⁴ E. A. De Wolf,⁴ X. Janssen,⁴ A. Knutsson,⁴ S. Luyckx,⁴ S. Ochesanu,⁴ R. Rougny,⁴ M. Van De Klundert,⁴ H. Van Haeevermaet,⁴ P. Van Mechelen,⁴ N. Van Remortel,⁴ A. Van Spilbeeck,⁴ F. Blekman,⁵ S. Blyweert,⁵ J. D'Hondt,⁵ N. Daci,⁵ N. Heracleous,⁵ J. Keaveney,⁵ S. Lowette,⁵ M. Maes,⁵ A. Olbrechts,⁵ Q. Python,⁵ D. Strom,⁵ S. Tavernier,⁵ W. Van Doninck,⁵ P. Van Mulders,⁵ G. P. Van Onsem,⁵ I. Villella,⁵ C. Caillol,⁶ B. Clerbaux,⁶ G. De Lentdecker,⁶ D. Dobur,⁶ L. Favart,⁶ A. P. R. Gay,⁶ A. Grebenyuk,⁶ A. Léonard,⁶ A. Mohammadi,⁶ L. Perniè,^{6,c} T. Reis,⁶ T. Seva,⁶ L. Thomas,⁶ C. Vander Velde,⁶ P. Vanlaer,⁶ J. Wang,⁶ F. Zenoni,⁶ V. Adler,⁷ K. Beernaert,⁷ L. Benucci,⁷ A. Cimmino,⁷ S. Costantini,⁷ S. Crucy,⁷ S. Dildick,⁷ A. Fagot,⁷ G. Garcia,⁷ J. Mccartin,⁷ A. A. Ocampo Rios,⁷ D. Ryckbosch,⁷ S. Salva Diblen,⁷ M. Sigamani,⁷ N. Strobbe,⁷ F. Thyssen,⁷ M. Tytgat,⁷ E. Yazgan,⁷ N. Zaganidis,⁷ S. Bagemez,⁸ C. Beluffi,^{8,d} G. Bruno,⁸ R. Castello,⁸ A. Caudron,⁸ L. Ceard,⁸ G. G. Da Silveira,⁸ C. Delaere,⁸ T. du Pree,⁸ D. Favart,⁸ L. Forthomme,⁸ A. Giammanco,^{8,e} J. Hollar,⁸ A. Jafari,⁸ P. Jez,⁸ M. Komm,⁸ V. Lemaitre,⁸ C. Nuttens,⁸ D. Pagano,⁸ L. Perrini,⁸ A. Pin,⁸ K. Piotrkowski,⁸ A. Popov,^{8,f} L. Quertenmont,⁸ M. Selvaggi,⁸ M. Vidal Marono,⁸ J. M. Vizan Garcia,⁸ N. Belii,⁹ T. Caebergs,⁹ E. Daubie,⁹ G. H. Hammad,⁹ W. L. Aldá Júnior,¹⁰ G. A. Alves,¹⁰ L. Brito,¹⁰ M. Correa Martins Junior,¹⁰ T. Dos Reis Martins,¹⁰ C. Mora Herrera,¹⁰ M. E. Pol,¹⁰ W. Carvalho,¹⁰ J. Chinellato,^{11,g} A. Custódio,¹¹ E. M. Da Costa,¹¹ D. De Jesus Damiao,¹¹ C. De Oliveira Martins,¹¹ S. Fonseca De Souza,¹¹ H. Malbouisson,¹¹ D. Matos Figueiredo,¹¹ L. Mundim,¹¹ H. Nogima,¹¹ W. L. Prado Da Silva,¹¹ J. Santaolalla,¹¹ A. Santoro,¹¹ A. Sznajder,¹¹ E. J. Tonelli Manganote,^{11,g} A. Vilela Pereira,¹¹ C. A. Bernardes,^{12b} S. Dogra,^{12a} T. R. Fernandez Perez Tomei,^{12a} E. M. Gregores,^{12b} P. G. Mercadante,^{12b} S. F. Novaes,^{12a} Sandra S. Padula,^{12a} A. Aleksandrov,¹³ V. Genchev,^{13,c} P. Iaydjiev,¹³ A. Marinov,¹³ S. Piperov,¹³ M. Rodozov,¹³ S. Stoykova,¹³ G. Sultanov,¹³ V. Tcholakov,¹³ M. Vutova,¹³ A. Dimitrov,¹⁴ I. Glushkov,¹⁴ R. Hadjiiska,¹⁴ V. Kozhuharov,¹⁴ L. Litov,¹⁴ B. Pavlov,¹⁴ P. Petkov,¹⁴ J. G. Bian,¹⁵ G. M. Chen,¹⁵ H. S. Chen,¹⁵ M. Chen,¹⁵ R. Du,¹⁵ C. H. Jiang,¹⁵ R. Plestina,^{15,h} J. Tao,¹⁵ Z. Wang,¹⁵ C. Asawatrangkuldee,¹⁶ Y. Ban,¹⁶ Q. Li,¹⁶ S. Liu,¹⁶ Y. Mao,¹⁶ S. J. Qian,¹⁶ D. Wang,¹⁶ W. Zou,¹⁶ C. Avila,¹⁷ L. F. Chaparro Sierra,¹⁷ C. Florez,¹⁷ J. P. Gomez,¹⁷ B. Gomez Moreno,¹⁷ J. C. Sanabria,¹⁷ N. Godinovic,¹⁸ D. Lelas,¹⁸ D. Polic,¹⁸ I. Puljak,¹⁸ Z. Antunovic,¹⁹ M. Kovac,¹⁹ V. Brigljevic,²⁰ K. Kadija,²⁰ J. Luetic,²⁰ D. Mekterovic,²⁰ L. Sudic,²⁰ A. Attikis,²¹ G. Mavromanolakis,²¹ J. Mousa,²¹ C. Nicolaou,²¹ F. Ptochos,²¹ P. A. Razis,²¹ M. Bodlak,²² M. Finger,²² M. Finger Jr.,^{22,i} Y. Assran,^{23,j} A. Ellithi Kamel,^{23,k} M. A. Mahmoud,^{23,l} A. Radi,^{23,m,n} M. Kadastik,²⁴ M. Murumaa,²⁴ M. Raidal,²⁴ A. Tiko,²⁴ P. Eerola,²⁵ G. Fedi,²⁵ M. Voutilainen,²⁵ J. Härkönen,²⁶ V. Karimäki,²⁶ R. Kinnunen,²⁶ M. J. Kortelainen,²⁶ T. Lampén,²⁶ K. Lassila-Perini,²⁶ S. Lehti,²⁶ T. Lindén,²⁶ P. Luukka,²⁶ T. Mäenpää,²⁶ T. Peltola,²⁶ E. Tuominen,²⁶ J. Tuominiemi,²⁶ E. Tuovinen,²⁶ L. Wendland,²⁶ J. Talvitie,²⁷ T. Tuuva,²⁷ M. Besancon,²⁸ F. Couderc,²⁸ M. DeJardin,²⁸ D. Denegri,²⁸ B. Fabbro,²⁸ J. L. Faure,²⁸ C. Favaro,²⁸ F. Ferri,²⁸ S. Ganjour,²⁸ A. Givernaud,²⁸ P. Gras,²⁸ G. Hamel de Monchenault,²⁸ P. Jarry,²⁸ E. Locci,²⁸ J. Malcles,²⁸ J. Rander,²⁸ A. Rosowsky,²⁸ M. Titov,²⁸ S. Baffioni,²⁹ F. Beaudette,²⁹ P. Busson,²⁹ C. Charlot,²⁹ T. Dahms,²⁹ M. Dalchenko,²⁹ L. Dobrzynski,²⁹ N. Filipovic,²⁹ A. Florent,²⁹ R. Granier de Cassagnac,²⁹ L. Mastrolorenzo,²⁹ P. Miné,²⁹ C. Mironov,²⁹ I. N. Naranjo,²⁹ M. Nguyen,²⁹ C. Ochando,²⁹ P. Paganini,²⁹ S. Regnard,²⁹ R. Salerno,²⁹ J. B. Sauvan,²⁹ Y. Sirois,²⁹ C. Veelken,²⁹ Y. Yilmaz,²⁹ A. Zabi,²⁹ J.-L. Agram,^{30,o} J. Andrea,³⁰ A. Aubin,³⁰ D. Bloch,³⁰ J.-M. Brom,³⁰ E. C. Chabert,³⁰ C. Collard,³⁰ E. Conte,^{30,o} J.-C. Fontaine,^{30,o} D. Gelé,³⁰ U. Goerlach,³⁰ C. Goetzmann,³⁰ A.-C. Le Bihan,³⁰ P. Van Hove,³⁰ S. Gadrat,³¹ S. Beauceron,³² N. Beaupere,³² G. Boudoul,^{32,c} E. Bouvier,³² S. Brochet,³² C. A. Carrillo Montoya,³² J. Chasserat,³² R. Chierici,³² D. Contardo,^{32,c} P. Depasse,³² H. El Mamouni,³² J. Fan,³² J. Fay,³² S. Gascon,³² M. Gouzevitch,³² B. Ille,³² T. Kurca,³² M. Lethuillier,³² L. Mirabito,³² S. Perries,³² J. D. Ruiz Alvarez,³² D. Sabes,³² L. Sgandurra,³² V. Sordini,³² M. Vander Donckt,³² P. Verdier,³² S. Viret,³² H. Xiao,³² Z. Tsamalaidze,^{33,i} C. Autermann,³⁴ S. Beranek,³⁴ M. Bontenackels,³⁴ M. Edelhoff,³⁴ L. Feld,³⁴

O. Hindrichs,³⁴ K. Klein,³⁴ A. Ostapchuk,³⁴ A. Perieanu,³⁴ F. Raupach,³⁴ J. Sammet,³⁴ S. Schael,³⁴ H. Weber,³⁴ B. Wittmer,³⁴ V. Zhukov,^{34,f} M. Ata,³⁵ M. Brodski,³⁵ E. Dietz-Laursonn,³⁵ D. Duchardt,³⁵ M. Erdmann,³⁵ R. Fischer,³⁵ A. Güth,³⁵ T. Hebbeker,³⁵ C. Heidemann,³⁵ K. Hoepfner,³⁵ D. Klingebiel,³⁵ S. Knutzen,³⁵ P. Kreuzer,³⁵ M. Merschmeyer,³⁵ A. Meyer,³⁵ P. Millet,³⁵ M. Olschewski,³⁵ K. Padeken,³⁵ P. Papacz,³⁵ H. Reithler,³⁵ S. A. Schmitz,³⁵ L. Sonnenschein,³⁵ D. Teyssier,³⁵ S. Thüer,³⁵ M. Weber,³⁵ V. Cherepanov,³⁶ Y. Erdogan,³⁶ G. Flügge,³⁶ H. Geenen,³⁶ M. Geisler,³⁶ W. Haj Ahmad,³⁶ A. Heister,³⁶ F. Hoehle,³⁶ B. Kargoll,³⁶ T. Kress,³⁶ Y. Kuessel,³⁶ A. Künsken,³⁶ J. Lingemann,^{36,c} A. Nowack,³⁶ I. M. Nugent,³⁶ L. Perchalla,³⁶ O. Pooth,³⁶ A. Stahl,³⁶ I. Asin,³⁷ N. Bartosik,³⁷ J. Behr,³⁷ W. Behrenhoff,³⁷ U. Behrens,³⁷ A. J. Bell,³⁷ M. Bergholz,^{37,p} A. Bethani,³⁷ K. Borrás,³⁷ A. Burgmeier,³⁷ A. Cakir,³⁷ L. Calligaris,³⁷ A. Campbell,³⁷ S. Choudhury,³⁷ F. Costanza,³⁷ C. Diez Pardos,³⁷ S. Dooling,³⁷ T. Dorland,³⁷ G. Eckerlin,³⁷ D. Eckstein,³⁷ T. Eichhorn,³⁷ G. Flucke,³⁷ J. Garay Garcia,³⁷ A. Geiser,³⁷ P. Gunnellini,³⁷ J. Hauk,³⁷ M. Hempel,^{37,p} D. Horton,³⁷ H. Jung,³⁷ A. Kalogeropoulos,³⁷ M. Kasemann,³⁷ P. Katsas,³⁷ J. Kieseler,³⁷ C. Kleinwort,³⁷ D. Krücker,³⁷ W. Lange,³⁷ J. Leonard,³⁷ K. Lipka,³⁷ A. Lobanov,³⁷ W. Lohmann,^{37,p} B. Lutz,³⁷ R. Mankel,³⁷ I. Marfin,^{37,p} I.-A. Melzer-Pellmann,³⁷ A. B. Meyer,³⁷ G. Mittag,³⁷ J. Mnich,³⁷ A. Mussgiller,³⁷ S. Naumann-Emme,³⁷ A. Nayak,³⁷ O. Novgorodova,³⁷ E. Ntomari,³⁷ H. Perrey,³⁷ D. Pitzl,³⁷ R. Placakyte,³⁷ A. Raspereza,³⁷ P. M. Ribeiro Cipriano,³⁷ B. Roland,³⁷ E. Ron,³⁷ M. Ö. Sahin,³⁷ J. Salfeld-Nebgen,³⁷ P. Saxena,³⁷ R. Schmidt,^{37,p} T. Schoerner-Sadenius,³⁷ M. Schröder,³⁷ C. Seitz,³⁷ S. Spannagel,³⁷ A. D. R. Vargas Trevino,³⁷ R. Walsh,³⁷ C. Wissing,³⁷ M. Aldaya Martin,³⁸ V. Blobel,³⁸ M. Centis Vignali,³⁸ A. R. Draeger,³⁸ J. Erfle,³⁸ E. Garutti,³⁸ K. Goebel,³⁸ M. Görner,³⁸ J. Haller,³⁸ M. Hoffmann,³⁸ R. S. Höing,³⁸ H. Kirschenmann,³⁸ R. Klanner,³⁸ R. Kogler,³⁸ J. Lange,³⁸ T. Lapsien,³⁸ T. Lenz,³⁸ I. Marchesini,³⁸ J. Ott,³⁸ T. Peiffer,³⁸ N. Pietsch,³⁸ J. Poehlsen,³⁸ T. Poehlsen,³⁸ D. Rathjens,³⁸ C. Sander,³⁸ H. Schettler,³⁸ P. Schleper,³⁸ E. Schlieckau,³⁸ A. Schmidt,³⁸ M. Seidel,³⁸ V. Sola,³⁸ H. Stadie,³⁸ G. Steinbrück,³⁸ D. Troendle,³⁸ E. Usai,³⁸ L. Vanelderen,³⁸ A. Vanhoefer,³⁸ C. Barth,³⁹ C. Baus,³⁹ J. Berger,³⁹ C. Böser,³⁹ E. Butz,³⁹ T. Chwalek,³⁹ W. De Boer,³⁹ A. Descroix,³⁹ A. Dierlamm,³⁹ M. Feindt,³⁹ F. Frensch,³⁹ M. Giffels,³⁹ F. Hartmann,^{39,c} T. Hauth,^{39,c} U. Husemann,³⁹ I. Katkov,^{39,f} A. Kormmayer,^{39,c} E. Kuznetsova,³⁹ P. Lobelle Pardo,³⁹ M. U. Mozer,³⁹ Th. Müller,³⁹ A. Nürnberg,³⁹ G. Quast,³⁹ K. Rabbertz,³⁹ F. Ratnikov,³⁹ S. Röcker,³⁹ H. J. Simonis,³⁹ F. M. Stober,³⁹ R. Ulrich,³⁹ J. Wagner-Kuhr,³⁹ S. Wayand,³⁹ T. Weiler,³⁹ R. Wolf,³⁹ G. Anagnostou,⁴⁰ G. Daskalakis,⁴⁰ T. Geralis,⁴⁰ V. A. Giakoumopoulou,⁴⁰ A. Kyriakis,⁴⁰ D. Loukas,⁴⁰ A. Markou,⁴⁰ C. Markou,⁴⁰ A. Psallidas,⁴⁰ I. Topsis-Giotis,⁴⁰ A. Agapitos,⁴¹ S. Kesisoglou,⁴¹ A. Panagiotou,⁴¹ N. Saoulidou,⁴¹ E. Stiliaris,⁴¹ X. Aslanoglou,⁴² I. Evangelou,⁴² G. Flouris,⁴² C. Foudas,⁴² P. Kokkas,⁴² N. Manthos,⁴² I. Papadopoulos,⁴² E. Paradas,⁴² G. Bencze,⁴³ C. Hajdu,⁴³ P. Hidas,⁴³ D. Horvath,^{43,q} F. Sikler,⁴³ V. Veszpremi,⁴³ G. Vesztergombi,^{43,r} A. J. Zsigmond,⁴³ N. Beni,⁴⁴ S. Czellar,⁴⁴ J. Karancsi,^{44,s} J. Molnar,⁴⁴ J. Palinkas,⁴⁴ Z. Szillasi,⁴⁴ P. Raics,⁴⁵ Z. L. Trocsanyi,⁴⁵ B. Ujvari,⁴⁵ S. K. Swain,⁴⁶ S. B. Beri,⁴⁷ V. Bhatnagar,⁴⁷ R. Gupta,⁴⁷ U. Bhawandeep,⁴⁷ A. K. Kalsi,⁴⁷ M. Kaur,⁴⁷ R. Kumar,⁴⁷ M. Mittal,⁴⁷ N. Nishu,⁴⁷ J. B. Singh,⁴⁷ Ashok Kumar,⁴⁸ Arun Kumar,⁴⁸ S. Ahuja,⁴⁸ A. Bhardwaj,⁴⁸ B. C. Choudhary,⁴⁸ A. Kumar,⁴⁸ S. Malhotra,⁴⁸ M. Naimuddin,⁴⁸ K. Ranjan,⁴⁸ V. Sharma,⁴⁸ S. Banerjee,⁴⁹ S. Bhattacharya,⁴⁹ K. Chatterjee,⁴⁹ S. Dutta,⁴⁹ B. Gomer,⁴⁹ Sa. Jain,⁴⁹ Sh. Jain,⁴⁹ R. Khurana,⁴⁹ A. Modak,⁴⁹ S. Mukherjee,⁴⁹ D. Roy,⁴⁹ S. Sarkar,⁴⁹ M. Sharan,⁴⁹ A. Abdulsalam,⁵⁰ D. Dutta,⁵⁰ S. Kailas,⁵⁰ V. Kumar,⁵⁰ A. K. Mohanty,^{50,c} L. M. Pant,⁵⁰ P. Shukla,⁵⁰ A. Topkar,⁵⁰ T. Aziz,⁵¹ S. Banerjee,⁵¹ S. Bhowmik,^{51,t} R. M. Chatterjee,⁵¹ R. K. Dewanjee,⁵¹ S. Dugad,⁵¹ S. Ganguly,⁵¹ S. Ghosh,⁵¹ M. Guchait,⁵¹ A. Gurtu,^{51,u} G. Kole,⁵¹ S. Kumar,⁵¹ M. Maity,^{51,t} G. Majumder,⁵¹ K. Mazumdar,⁵¹ G. B. Mohanty,⁵¹ B. Parida,⁵¹ K. Sudhakar,⁵¹ N. Wickramage,^{51,v} H. Bakhshiansohi,⁵² H. Behnamian,⁵² S. M. Etesami,^{52,w} A. Fahim,^{52,x} R. Goldouzian,⁵² M. Khakzad,⁵² M. Mohammadi Najafabadi,⁵² M. Naseri,⁵² S. Paktinat Mehdiabadi,⁵² F. Rezaei Hosseinabadi,⁵² B. Safarzadeh,^{52,y} M. Zeinali,⁵² M. Felcini,⁵³ M. Grunewald,⁵³ M. Abbrescia,^{54a,54b} L. Barbore,^{54a,54b} C. Calabria,^{54a,54b} S. S. Chhibra,^{54a,54b} A. Colaleo,^{54a} D. Creanza,^{54a,54c} N. De Filippis,^{54a,54c} M. De Palma,^{54a,54b} L. Fiore,^{54a} G. Iaselli,^{54a,54c} G. Maggi,^{54a,54c} M. Maggi,^{54a} S. My,^{54a,54c} S. Nuzzo,^{54a,54b} A. Pompili,^{54a,54b} G. Pugliese,^{54a,54c} R. Radogna,^{54a,54b,c} G. Selvaggi,^{54a,54b} L. Silvestris,^{54a,c} G. Singh,^{54a,54b} R. Venditti,^{54a,54b} G. Zito,^{54a} G. Abbiendi,^{55a} A. C. Benvenuti,^{55a} D. Bonacorsi,^{55a,55b} S. Braibant-Giacomelli,^{55a,55b} L. Brigliadori,^{55a,55b} R. Campanini,^{55a,55b} P. Capiluppi,^{55a,55b} A. Castro,^{55a,55b} F. R. Cavallo,^{55a} G. Codispoti,^{55a,55b} M. Cuffiani,^{55a,55b} G. M. Dallavalle,^{55a} F. Fabbri,^{55a} A. Fanfani,^{55a,55b} D. Fasanella,^{55a,55b} P. Giacomelli,^{55a} C. Grandi,^{55a} L. Guiducci,^{55a,55b} S. Marcellini,^{55a} G. Masetti,^{55a} A. Montanari,^{55a} F. L. Navarria,^{55a,55b} A. Perrotta,^{55a} F. Primavera,^{55a,55b} A. M. Rossi,^{55a,55b} T. Rovelli,^{55a,55b} G. P. Siroli,^{55a,55b} N. Tosi,^{55a,55b} R. Travaglini,^{55a,55b} S. Albergo,^{56a,56b} G. Cappello,^{56a} M. Chiorboli,^{56a,56b} S. Costa,^{56a,56b} F. Giordano,^{56a,c} R. Potenza,^{56a,56b} A. Tricomi,^{56a,56b} C. Tuve,^{56a,56b} G. Barbagli,^{57a} V. Ciulli,^{57a,57b} C. Civinini,^{57a} R. D'Alessandro,^{57a,57b} E. Focardi,^{57a,57b} E. Gallo,^{57a} S. Gonzi,^{57a,57b} V. Gori,^{57a,57b,c} P. Lenzi,^{57a,57b}

M. Meschini,^{57a} S. Paoletti,^{57a} G. Sguazzoni,^{57a} A. Tropiano,^{57a,57b} L. Benussi,⁵⁸ S. Bianco,⁵⁸ F. Fabbri,⁵⁸ D. Piccolo,⁵⁸
 R. Ferretti,^{59a,59b} F. Ferro,^{59a} M. Lo Vetere,^{59a,59b} E. Robutti,^{59a} S. Tosi,^{59a,59b} M. E. Dinardo,^{60a,60b} S. Fiorendi,^{60a,60b,c}
 S. Gennai,^{60a,c} R. Gerosa,^{60a,60b,c} A. Ghezzi,^{60a,60b} P. Govoni,^{60a,60b} M. T. Lucchini,^{60a,60b,c} S. Malvezzi,^{60a}
 R. A. Manzoni,^{60a,60b} A. Martelli,^{60a,60b} B. Marzocchi,^{60a,60b} D. Menasce,^{60a} L. Moroni,^{60a} M. Paganoni,^{60a,60b} D. Pedrini,^{60a}
 S. Ragazzi,^{60a,60b} N. Redaelli,^{60a} T. Tabarelli de Fatis,^{60a,60b} S. Buontempo,^{61a} N. Cavallo,^{61a,61c} S. Di Guida,^{61a,61d,c}
 F. Fabozzi,^{61a,61c} A. O. M. Iorio,^{61a,61b} L. Lista,^{61a} S. Meola,^{61a,61d,c} M. Merola,^{61a} P. Paolucci,^{61a,c} P. Azzi,^{62a} N. Bacchetta,^{62a}
 D. Bisello,^{62a,62b} A. Branca,^{62a,62b} M. Dall'Osso,^{62a,62b} T. Dorigo,^{62a} M. Galanti,^{62a,62b} F. Gasparini,^{62a,62b} P. Giubilate,^{62a,62b}
 A. Gozzelino,^{62a} K. Kanishchev,^{62a,62c} S. Lacaprara,^{62a} M. Margoni,^{62a,62b} A. T. Meneguzzo,^{62a,62b} F. Montecassiano,^{62a}
 M. Passaseo,^{62a} J. Pazzini,^{62a,62b} M. Pegoraro,^{62a} N. Pozzobon,^{62a,62b} P. Ronchese,^{62a,62b} F. Simonetto,^{62a,62b} E. Torassa,^{62a}
 M. Tosi,^{62a,62b} A. Triossi,^{62a} P. Zotto,^{62a,62b} A. Zucchetta,^{62a,62b} G. Zumerle,^{62a,62b} M. Gabusi,^{63a,63b} S. P. Ratti,^{63a,63b} V. Re,^{63a}
 C. Riccardi,^{63a,63b} P. Salvini,^{63a} P. Vitulo,^{63a,63b} M. Biasini,^{64a,64b} G. M. Bilei,^{64a} D. Cianggottini,^{64a,64b} L. Fanò,^{64a,64b}
 P. Lariccia,^{64a,64b} G. Mantovani,^{64a,64b} M. Menichelli,^{64a} F. Romeo,^{64a,64b} A. Saha,^{64a} A. Santocchia,^{64a,64b} A. Spiezia,^{64a,64b,c}
 K. Androsov,^{65a,z} P. Azzurri,^{65a} G. Bagliesi,^{65a} J. Bernardini,^{65a} T. Boccali,^{65a} G. Broccolo,^{65a,65c} R. Castaldi,^{65a}
 M. A. Ciocci,^{65a,z} R. Dell'Orso,^{65a} S. Donato,^{65a,65c} F. Fiori,^{65a,65c} L. Foà,^{65a,65c} A. Giassi,^{65a} M. T. Grippo,^{65a,z}
 F. Ligabue,^{65a,65c} T. Lomtadze,^{65a} L. Martini,^{65a,65b} A. Messineo,^{65a,65b} C. S. Moon,^{65a,aa} F. Palla,^{65a,c} A. Rizzi,^{65a,65b}
 A. Savoy-Navarro,^{65a,bb} A. T. Serban,^{65a} P. Spagnolo,^{65a} P. Squillacioti,^{65a,z} R. Tenchini,^{65a} G. Tonelli,^{65a,65b} A. Venturi,^{65a}
 P. G. Verdini,^{65a} C. Vernieri,^{65a,65c,c} L. Barone,^{66a,66b} F. Cavallari,^{66a} G. D'imperio,^{66a,66b} D. Del Re,^{66a,66b} M. Diemoz,^{66a}
 M. Grassi,^{66a,66b} C. Jorda,^{66a} E. Longo,^{66a,66b} F. Margaroli,^{66a,66b} P. Meridiani,^{66a} F. Micheli,^{66a,66b,c} S. Nourbakhsh,^{66a,66b}
 G. Organtini,^{66a,66b} R. Paramatti,^{66a} S. Rahatlou,^{66a,66b} C. Rovelli,^{66a} F. Santanastasio,^{66a,66b} L. Soffi,^{66a,66b,c} P. Traczyk,^{66a,66b}
 N. Amapane,^{67a,67b} R. Arcidiacono,^{67a,67c} S. Argiro,^{67a,67b,c} M. Arneodo,^{67a,67c} R. Bellan,^{67a,67b} C. Biino,^{67a} N. Cartiglia,^{67a}
 S. Casasso,^{67a,67b,c} M. Costa,^{67a,67b} A. Degano,^{67a,67b} N. Demaria,^{67a} L. Finco,^{67a,67b} C. Mariotti,^{67a} S. Maselli,^{67a}
 E. Migliore,^{67a,67b} V. Monaco,^{67a,67b} M. Musich,^{67a} M. M. Obertino,^{67a,67c,c} G. Ortona,^{67a,67b} L. Pacher,^{67a,67b} N. Pastrone,^{67a}
 M. Pelliccioni,^{67a} G. L. Pinna Angioni,^{67a,67b} A. Potenza,^{67a,67b} A. Romero,^{67a,67b} M. Ruspa,^{67a,67c} R. Sacchi,^{67a,67b}
 A. Solano,^{67a,67b} A. Staiano,^{67a} U. Tamponi,^{67a} S. Belforte,^{68a} V. Candelise,^{68a,68b} M. Casarsa,^{68a} F. Cossutti,^{68a}
 G. Della Ricca,^{68a,68b} B. Gobbo,^{68a} C. La Licata,^{68a,68b} M. Marone,^{68a,68b} A. Schizzi,^{68a,68b,c} T. Umer,^{68a,68b} A. Zanetti,^{68a}
 S. Chang,⁶⁹ A. Kropivnitskaya,⁶⁹ S. K. Nam,⁶⁹ D. H. Kim,⁷⁰ G. N. Kim,⁷⁰ M. S. Kim,⁷⁰ D. J. Kong,⁷⁰ S. Lee,⁷⁰ Y. D. Oh,⁷⁰
 H. Park,⁷⁰ A. Sakharov,⁷⁰ D. C. Son,⁷⁰ T. J. Kim,⁷¹ J. Y. Kim,⁷² S. Song,⁷² S. Choi,⁷³ D. Gyun,⁷³ B. Hong,⁷³ M. Jo,⁷³
 H. Kim,⁷³ Y. Kim,⁷³ B. Lee,⁷³ K. S. Lee,⁷³ S. K. Park,⁷³ Y. Roh,⁷³ M. Choi,⁷⁴ J. H. Kim,⁷⁴ I. C. Park,⁷⁴ G. Ryu,⁷⁴ M. S. Ryu,⁷⁴
 Y. Choi,⁷⁵ Y. K. Choi,⁷⁵ J. Goh,⁷⁵ D. Kim,⁷⁵ E. Kwon,⁷⁵ J. Lee,⁷⁵ H. Seo,⁷⁵ I. Yu,⁷⁵ A. Juodagalvis,⁷⁶ J. R. Komaragiri,⁷⁷
 M. A. B. Md Ali,⁷⁷ H. Castilla-Valdez,⁷⁸ E. De La Cruz-Burelo,⁷⁸ I. Heredia-de La Cruz,^{78,cc} A. Hernandez-Almada,⁷⁸
 R. Lopez-Fernandez,⁷⁸ A. Sanchez-Hernandez,⁷⁸ S. Carrillo Moreno,⁷⁹ F. Vazquez Valencia,⁷⁹ I. Pedraza,⁸⁰
 H. A. Salazar Ibarquen,⁸⁰ E. Casimiro Linares,⁸¹ A. Morelos Pineda,⁸¹ D. Krofcheck,⁸² P. H. Butler,⁸³ S. Reucroft,⁸³
 A. Ahmad,⁸⁴ M. Ahmad,⁸⁴ Q. Hassan,⁸⁴ H. R. Hoorani,⁸⁴ S. Khalid,⁸⁴ W. A. Khan,⁸⁴ T. Khurshid,⁸⁴ M. A. Shah,⁸⁴
 M. Shoaib,⁸⁴ H. Bialkowska,⁸⁵ M. Bluj,⁸⁵ B. Boimska,⁸⁵ T. Frueboes,⁸⁵ M. Górski,⁸⁵ M. Kazana,⁸⁵ K. Nawrocki,⁸⁵
 K. Romanowska-Rybinska,⁸⁵ M. Szeleper,⁸⁵ P. Zalewski,⁸⁵ G. Brona,⁸⁶ K. Bunkowski,⁸⁶ M. Cwiok,⁸⁶ W. Dominik,⁸⁶
 K. Doroba,⁸⁶ A. Kalinowski,⁸⁶ M. Konecki,⁸⁶ J. Krolikowski,⁸⁶ M. Misiura,⁸⁶ M. Olszewski,⁸⁶ W. Wolszczak,⁸⁶
 P. Bargassa,⁸⁷ C. Beirão Da Cruz E Silva,⁸⁷ P. Faccioli,⁸⁷ P. G. Ferreira Parracho,⁸⁷ M. Gallinaro,⁸⁷ L. Lloret Iglesias,⁸⁷
 F. Nguyen,⁸⁷ J. Rodrigues Antunes,⁸⁷ J. Seixas,⁸⁷ J. Varela,⁸⁷ P. Vischia,⁸⁷ M. Gavrilenko,⁸⁸ I. Golutvin,⁸⁸ I. Gorbunov,⁸⁸
 V. Karjavin,⁸⁸ V. Konoplyanikov,⁸⁸ V. Korenkov,⁸⁸ G. Kozlov,⁸⁸ A. Lanev,⁸⁸ A. Malakhov,⁸⁸ V. Matveev,^{88,dd} V. V. Mitsyn,⁸⁸
 P. Moisenz,⁸⁸ V. Palichik,⁸⁸ V. Perelygin,⁸⁸ S. Shmatov,⁸⁸ V. Smirnov,⁸⁸ E. Tikhonenko,⁸⁸ A. Zarubin,⁸⁸ V. Golovtsov,⁸⁹
 Y. Ivanov,⁸⁹ V. Kim,^{89,ee} P. Levchenko,⁸⁹ V. Murzin,⁸⁹ V. Oreshkin,⁸⁹ I. Smirnov,⁸⁹ V. Sulimov,⁸⁹ L. Uvarov,⁸⁹ S. Vavilov,⁸⁹
 A. Vorobyev,⁸⁹ An. Vorobyev,⁸⁹ Yu. Andreev,⁹⁰ A. Dermenev,⁹⁰ S. Gninenko,⁹⁰ N. Golubev,⁹⁰ M. Kirsanov,⁹⁰
 N. Krasnikov,⁹⁰ A. Pashenkov,⁹⁰ D. Tlisov,⁹⁰ A. Toropin,⁹⁰ V. Epshteyn,⁹¹ V. Gavrilov,⁹¹ N. Lychkovskaya,⁹¹ V. Popov,⁹¹
 G. Safronov,⁹¹ S. Semenov,⁹¹ A. Spiridonov,⁹¹ V. Stolin,⁹¹ E. Vlasov,⁹¹ A. Zhokin,⁹¹ V. Andreev,⁹² M. Azarkin,⁹²
 I. Dremin,⁹² M. Kirakosyan,⁹² A. Leonidov,⁹² G. Mesyats,⁹² S. V. Rusakov,⁹² A. Vinogradov,⁹² A. Belyaev,⁹³ E. Boos,⁹³
 A. Ershov,⁹³ A. Gribushin,⁹³ L. Khein,⁹³ V. Klyukhin,⁹³ O. Kodolova,⁹³ I. Lokhtin,⁹³ O. Lukina,⁹³ S. Obraztsov,⁹³
 S. Petrushanko,⁹³ V. Savrin,⁹³ A. Snigirev,⁹⁴ I. Azhgirey,⁹⁴ I. Bayshev,⁹⁴ S. Bitioukov,⁹⁴ V. Kachanov,⁹⁴ A. Kalinin,⁹⁴
 D. Konstantinov,⁹⁴ V. Krychkin,⁹⁴ V. Petrov,⁹⁴ R. Ryutin,⁹⁴ A. Sobol,⁹⁴ L. Tourtchanovitch,⁹⁴ S. Troshin,⁹⁴ N. Tyurin,⁹⁴
 A. Uzunian,⁹⁴ A. Volkov,⁹⁴ P. Adzic,^{95,ff} M. Ekmedzic,⁹⁵ J. Milosevic,⁹⁵ V. Rekovic,⁹⁵ J. Alcaraz Maestre,⁹⁶ C. Battilana,⁹⁶

E. Calvo,⁹⁶ M. Cerrada,⁹⁶ M. Chamizo Llatas,⁹⁶ N. Colino,⁹⁶ B. De La Cruz,⁹⁶ A. Delgado Peris,⁹⁶
D. Domínguez Vázquez,⁹⁶ A. Escalante Del Valle,⁹⁶ C. Fernandez Bedoya,⁹⁶ J. P. Fernández Ramos,⁹⁶ J. Flix,⁹⁶
M. C. Fouz,⁹⁶ P. Garcia-Abia,⁹⁶ O. Gonzalez Lopez,⁹⁶ S. Goy Lopez,⁹⁶ J. M. Hernandez,⁹⁶ M. I. Josa,⁹⁶
E. Navarro De Martino,⁹⁶ A. Pérez-Calero Yzquierdo,⁹⁶ J. Puerta Pelayo,⁹⁶ A. Quintario Olmeda,⁹⁶ I. Redondo,⁹⁶
L. Romero,⁹⁶ M. S. Soares,⁹⁶ C. Albajar,⁹⁷ J. F. de Trocóniz,⁹⁷ M. Missiroli,⁹⁷ D. Moran,⁹⁷ H. Brun,⁹⁸ J. Cuevas,⁹⁸
J. Fernandez Menendez,⁹⁸ S. Folgueras,⁹⁸ I. Gonzalez Caballero,⁹⁸ J. A. Brochero Cifuentes,⁹⁹ I. J. Cabrillo,⁹⁹
A. Calderon,⁹⁹ J. Duarte Campderros,⁹⁹ M. Fernandez,⁹⁹ G. Gomez,⁹⁹ A. Graziano,⁹⁹ A. Lopez Virto,⁹⁹ J. Marco,⁹⁹
R. Marco,⁹⁹ C. Martinez Rivero,⁹⁹ F. Matorras,⁹⁹ F. J. Munoz Sanchez,⁹⁹ J. Piedra Gomez,⁹⁹ T. Rodrigo,⁹⁹
A. Y. Rodríguez-Marrero,⁹⁹ A. Ruiz-Jimeno,⁹⁹ L. Scodellaro,⁹⁹ I. Vila,⁹⁹ R. Vilar Cortabitarte,⁹⁹ D. Abbaneo,¹⁰⁰
E. Auffray,¹⁰⁰ G. Auzinger,¹⁰⁰ M. Bachtis,¹⁰⁰ P. Baillon,¹⁰⁰ A. H. Ball,¹⁰⁰ D. Barney,¹⁰⁰ A. Benaglia,¹⁰⁰ J. Bendavid,¹⁰⁰
L. Benhabib,¹⁰⁰ J. F. Benitez,¹⁰⁰ C. Bernet,^{100,h} G. Bianchi,¹⁰⁰ P. Bloch,¹⁰⁰ A. Bocci,¹⁰⁰ A. Bonato,¹⁰⁰ O. Bondu,¹⁰⁰
C. Botta,¹⁰⁰ H. Breuker,¹⁰⁰ T. Camporesi,¹⁰⁰ G. Cerminara,¹⁰⁰ S. Colafranceschi,^{100,gg} M. D'Alfonso,¹⁰⁰ D. d'Enterria,¹⁰⁰
A. Dabrowski,¹⁰⁰ A. David,¹⁰⁰ F. De Guio,¹⁰⁰ A. De Roeck,¹⁰⁰ S. De Visscher,¹⁰⁰ E. Di Marco,¹⁰⁰ M. Dobson,¹⁰⁰
M. Dordevic,¹⁰⁰ B. Dorney,¹⁰⁰ N. Dupont-Sagorin,¹⁰⁰ A. Elliott-Peisert,¹⁰⁰ J. Eugster,¹⁰⁰ G. Franzoni,¹⁰⁰ W. Funk,¹⁰⁰
D. Gigi,¹⁰⁰ K. Gill,¹⁰⁰ D. Giordano,¹⁰⁰ M. Girone,¹⁰⁰ F. Glege,¹⁰⁰ R. Guida,¹⁰⁰ S. Gundacker,¹⁰⁰ M. Guthoff,¹⁰⁰
J. Hammer,¹⁰⁰ M. Hansen,¹⁰⁰ P. Harris,¹⁰⁰ J. Hegeman,¹⁰⁰ V. Innocente,¹⁰⁰ P. Janot,¹⁰⁰ K. Kousouris,¹⁰⁰ K. Krajczar,¹⁰⁰
P. Lecoq,¹⁰⁰ C. Lourenço,¹⁰⁰ N. Magini,¹⁰⁰ L. Malgeri,¹⁰⁰ M. Mannelli,¹⁰⁰ J. Marrouche,¹⁰⁰ L. Masetti,¹⁰⁰ F. Meijers,¹⁰⁰
S. Mersi,¹⁰⁰ E. Meschi,¹⁰⁰ F. Moortgat,¹⁰⁰ S. Morovic,¹⁰⁰ M. Mulders,¹⁰⁰ P. Musella,¹⁰⁰ L. Orsini,¹⁰⁰ L. Pape,¹⁰⁰ E. Perez,¹⁰⁰
L. Perrozzi,¹⁰⁰ A. Petrilli,¹⁰⁰ G. Petrucciani,¹⁰⁰ A. Pfeiffer,¹⁰⁰ M. Pierini,¹⁰⁰ M. Pimiä,¹⁰⁰ D. Piparo,¹⁰⁰ M. Plagge,¹⁰⁰
A. Racz,¹⁰⁰ G. Rolandi,^{100,hh} M. Rovere,¹⁰⁰ H. Sakulin,¹⁰⁰ C. Schäfer,¹⁰⁰ C. Schwick,¹⁰⁰ A. Sharma,¹⁰⁰ P. Siegrist,¹⁰⁰
P. Silva,¹⁰⁰ M. Simon,¹⁰⁰ P. Sphicas,^{100,ii} D. Spiga,¹⁰⁰ J. Steggemann,¹⁰⁰ B. Stieger,¹⁰⁰ M. Stoye,¹⁰⁰ Y. Takahashi,¹⁰⁰
D. Treille,¹⁰⁰ A. Tsiros,¹⁰⁰ G. I. Veres,^{100,r} J. R. Vlimant,¹⁰⁰ N. Wardle,¹⁰⁰ H. K. Wöhri,¹⁰⁰ H. Wollny,¹⁰⁰ W. D. Zeuner,¹⁰⁰
W. Bertl,¹⁰¹ K. Deiters,¹⁰¹ W. Erdmann,¹⁰¹ R. Horisberger,¹⁰¹ Q. Ingram,¹⁰¹ H. C. Kaestli,¹⁰¹ D. Kotlinski,¹⁰¹
U. Langenegger,¹⁰¹ D. Renker,¹⁰¹ T. Rohe,¹⁰¹ F. Bachmair,¹⁰² L. Bäni,¹⁰² L. Bianchini,¹⁰² M. A. Buchmann,¹⁰² B. Casal,¹⁰²
N. Chanon,¹⁰² G. Dissertori,¹⁰² M. Dittmar,¹⁰² M. Donegà,¹⁰² M. Dünser,¹⁰² P. Eller,¹⁰² C. Grab,¹⁰² D. Hits,¹⁰² J. Hoss,¹⁰²
W. Lustermann,¹⁰² B. Mangano,¹⁰² A. C. Marini,¹⁰² P. Martinez Ruiz del Arbol,¹⁰² M. Masciovecchio,¹⁰² D. Meister,¹⁰²
N. Mohr,¹⁰² C. Nägeli,^{102,ij} F. Nessi-Tedaldi,¹⁰² F. Pandolfi,¹⁰² F. Pauss,¹⁰² M. Peruzzi,¹⁰² M. Quittnat,¹⁰² L. Rebane,¹⁰²
M. Rossini,¹⁰² A. Starodumov,^{102,kk} M. Takahashi,¹⁰² K. Theofilatos,¹⁰² R. Wallny,¹⁰² H. A. Weber,¹⁰² C. AMSler,^{103,ll}
M. F. Canelli,¹⁰³ V. Chiochia,¹⁰³ A. De Cosa,¹⁰³ A. Hinzmann,¹⁰³ T. Hreus,¹⁰³ B. Kilminster,¹⁰³ C. Lange,¹⁰³
B. Millan Mejias,¹⁰³ J. Ngadiuba,¹⁰³ P. Robmann,¹⁰³ F. J. Ronga,¹⁰³ S. Taroni,¹⁰³ M. Verzetti,¹⁰³ Y. Yang,¹⁰³ M. Cardaci,¹⁰⁴
K. H. Chen,¹⁰⁴ C. Ferro,¹⁰⁴ C. M. Kuo,¹⁰⁴ W. Lin,¹⁰⁴ Y. J. Lu,¹⁰⁴ R. Volpe,¹⁰⁴ S. S. Yu,¹⁰⁴ P. Chang,¹⁰⁵ Y. H. Chang,¹⁰⁵
Y. W. Chang,¹⁰⁵ Y. Chao,¹⁰⁵ K. F. Chen,¹⁰⁵ P. H. Chen,¹⁰⁵ C. Dietz,¹⁰⁵ U. Grundler,¹⁰⁵ W.-S. Hou,¹⁰⁵ K. Y. Kao,¹⁰⁵
Y. J. Lei,¹⁰⁵ Y. F. Liu,¹⁰⁵ R.-S. Lu,¹⁰⁵ D. Majumder,¹⁰⁵ E. Petrakou,¹⁰⁵ Y. M. Tzeng,¹⁰⁵ R. Wilken,¹⁰⁵ B. Asavapibhop,¹⁰⁶
N. Srimanobhas,¹⁰⁶ N. Suwonjandee,¹⁰⁶ A. Adiguzel,¹⁰⁷ M. N. Bakirci,^{107,mm} S. Cerci,^{107,nn} C. Dozen,¹⁰⁷ I. Dumanoglu,¹⁰⁷
E. Eskut,¹⁰⁷ S. Girgis,¹⁰⁷ G. Gokbulut,¹⁰⁷ E. Gupinar,¹⁰⁷ I. Hos,¹⁰⁷ E. E. Kangal,¹⁰⁷ A. Kayis Topaksu,¹⁰⁷ G. Onengut,^{107,oo}
K. Ozdemir,¹⁰⁷ S. Ozturk,^{107,mm} A. Polatoz,¹⁰⁷ D. Sunar Cerci,^{107,nn} B. Tali,^{107,nn} H. Topakli,^{107,mm} M. Vergili,¹⁰⁷
I. V. Akin,¹⁰⁸ B. Bilin,¹⁰⁸ S. Bilmis,¹⁰⁸ H. Gamsizkan,^{108,pp} G. Karapinar,^{108,qq} K. Ocalan,^{108,rr} S. Sekmen,¹⁰⁸ U. E. Surat,¹⁰⁸
M. Yalvac,¹⁰⁸ M. Zeyrek,¹⁰⁸ E. Gülmez,¹⁰⁹ B. Isildak,^{109,ss} M. Kaya,^{109,tt} O. Kaya,^{109,uu} K. Cankocak,¹¹⁰ F. I. Vardarli,¹¹⁰
L. Levchuk,¹¹¹ P. Sorokin,¹¹¹ J. J. Brooke,¹¹² E. Clement,¹¹² D. Cussans,¹¹² H. Flacher,¹¹² J. Goldstein,¹¹² M. Grimes,¹¹²
G. P. Heath,¹¹² H. F. Heath,¹¹² J. Jacob,¹¹² L. Kreczko,¹¹² C. Lucas,¹¹² Z. Meng,¹¹² D. M. Newbold,^{112,vv} S. Paramesvaran,¹¹²
A. Poll,¹¹² S. Senkin,¹¹² V. J. Smith,¹¹² T. Williams,¹¹² K. W. Bell,¹¹³ A. Belyaev,^{113,ww} C. Brew,¹¹³ R. M. Brown,¹¹³
D. J. A. Cockerill,¹¹³ J. A. Coughlan,¹¹³ K. Harder,¹¹³ S. Harper,¹¹³ E. Olaiya,¹¹³ D. Petyt,¹¹³
C. H. Shepherd-Themistocleous,¹¹³ A. Thea,¹¹³ I. R. Tomalin,¹¹³ W. J. Womersley,¹¹³ S. D. Worm,¹¹³ M. Baber,¹¹⁴
R. Bainbridge,¹¹⁴ O. Buchmuller,¹¹⁴ D. Burton,¹¹⁴ D. Colling,¹¹⁴ N. Cripps,¹¹⁴ M. Cutajar,¹¹⁴ P. Dauncey,¹¹⁴ G. Davies,¹¹⁴
M. Della Negra,¹¹⁴ P. Dunne,¹¹⁴ W. Ferguson,¹¹⁴ J. Fulcher,¹¹⁴ D. Futyan,¹¹⁴ A. Gilbert,¹¹⁴ G. Hall,¹¹⁴ G. Iles,¹¹⁴ M. Jarvis,¹¹⁴
G. Karapostoli,¹¹⁴ M. Kenzie,¹¹⁴ R. Lane,¹¹⁴ R. Lucas,^{114,vv} L. Lyons,¹¹⁴ A.-M. Magnan,¹¹⁴ S. Malik,¹¹⁴ B. Mathias,¹¹⁴
J. Nash,¹¹⁴ A. Nikitenko,^{114,kk} J. Pela,¹¹⁴ M. Pesaresi,¹¹⁴ K. Petridis,¹¹⁴ D. M. Raymond,¹¹⁴ S. Rogerson,¹¹⁴ A. Rose,¹¹⁴
C. Seez,¹¹⁴ P. Sharp,^{114,a} A. Tapper,¹¹⁴ M. Vazquez Acosta,¹¹⁴ T. Virdee,¹¹⁴ S. C. Zenz,¹¹⁴ J. E. Cole,¹¹⁵ P. R. Hobson,¹¹⁵
A. Khan,¹¹⁵ P. Kyberd,¹¹⁵ D. Leggat,¹¹⁵ D. Leslie,¹¹⁵ W. Martin,¹¹⁵ I. D. Reid,¹¹⁵ P. Symonds,¹¹⁵ L. Teodorescu,¹¹⁵

M. Turner,¹¹⁵ J. Dittmann,¹¹⁶ K. Hatakeyama,¹¹⁶ A. Kasmi,¹¹⁶ H. Liu,¹¹⁶ T. Scarborough,¹¹⁶ O. Charaf,¹¹⁷ S. I. Cooper,¹¹⁷ C. Henderson,¹¹⁷ P. Rumerio,¹¹⁷ A. Avetisyan,¹¹⁸ T. Bose,¹¹⁸ C. Fantasia,¹¹⁸ P. Lawson,¹¹⁸ C. Richardson,¹¹⁸ J. Rohlf,¹¹⁸ J. St. John,¹¹⁸ L. Sulak,¹¹⁸ J. Alimena,¹¹⁹ E. Berry,¹¹⁹ S. Bhattacharya,¹¹⁹ G. Christopher,¹¹⁹ D. Cutts,¹¹⁹ Z. Demiragli,¹¹⁹ N. Dhingra,¹¹⁹ A. Ferapontov,¹¹⁹ A. Garabedian,¹¹⁹ U. Heintz,¹¹⁹ G. Kukartsev,¹¹⁹ E. Laird,¹¹⁹ G. Landsberg,¹¹⁹ M. Luk,¹¹⁹ M. Narain,¹¹⁹ M. Segala,¹¹⁹ T. Sinthuprasith,¹¹⁹ T. Speer,¹¹⁹ J. Swanson,¹¹⁹ R. Breedon,¹²⁰ G. Breto,¹²⁰ M. Calderon De La Barca Sanchez,¹²⁰ S. Chauhan,¹²⁰ M. Chertok,¹²⁰ J. Conway,¹²⁰ R. Conway,¹²⁰ P. T. Cox,¹²⁰ R. Erbacher,¹²⁰ M. Gardner,¹²⁰ W. Ko,¹²⁰ R. Lander,¹²⁰ T. Miceli,¹²⁰ M. Mulhearn,¹²⁰ D. Pellett,¹²⁰ J. Pilot,¹²⁰ F. Ricci-Tam,¹²⁰ M. Searle,¹²⁰ S. Shalhout,¹²⁰ J. Smith,¹²⁰ M. Squires,¹²⁰ D. Stolp,¹²⁰ M. Tripathi,¹²⁰ S. Wilbur,¹²⁰ R. Yohay,¹²⁰ R. Cousins,¹²¹ P. Everaerts,¹²¹ C. Farrell,¹²¹ J. Hauser,¹²¹ M. Ignatenko,¹²¹ G. Rakness,¹²¹ E. Takasugi,¹²¹ V. Valuev,¹²¹ M. Weber,¹²¹ K. Burt,¹²² R. Clare,¹²² J. Ellison,¹²² J. W. Gary,¹²² G. Hanson,¹²² J. Heilman,¹²² M. Iova Rikova,¹²² P. Jandir,¹²² E. Kennedy,¹²² F. Lacroix,¹²² O. R. Long,¹²² A. Luthra,¹²² M. Malberti,¹²² H. Nguyen,¹²² M. Olmedo Negrete,¹²² A. Shrinivas,¹²² S. Sumowidagdo,¹²² S. Wimpenny,¹²² W. Andrews,¹²³ J. G. Branson,¹²³ G. B. Cerati,¹²³ S. Cittolin,¹²³ R. T. D'Agnolo,¹²³ D. Evans,¹²³ A. Holzner,¹²³ R. Kelley,¹²³ D. Klein,¹²³ M. Lebourgeois,¹²³ J. Letts,¹²³ I. Macneill,¹²³ D. Olivito,¹²³ S. Padhi,¹²³ C. Palmer,¹²³ M. Pieri,¹²³ M. Sani,¹²³ V. Sharma,¹²³ S. Simon,¹²³ E. Sudano,¹²³ M. Tadel,¹²³ Y. Tu,¹²³ A. Vartak,¹²³ C. Welke,¹²³ F. Würthwein,¹²³ A. Yagil,¹²³ D. Barge,¹²⁴ J. Bradmiller-Feld,¹²⁴ C. Campagnari,¹²⁴ T. Danielson,¹²⁴ A. Dishaw,¹²⁴ K. Flowers,¹²⁴ M. Franco Sevilla,¹²⁴ P. Geffert,¹²⁴ C. George,¹²⁴ F. Golf,¹²⁴ L. Gouskos,¹²⁴ J. Incandela,¹²⁴ C. Justus,¹²⁴ N. Mccoll,¹²⁴ J. Richman,¹²⁴ D. Stuart,¹²⁴ W. To,¹²⁴ C. West,¹²⁴ J. Yoo,¹²⁴ A. Apresyan,¹²⁵ A. Bornheim,¹²⁵ J. Bunn,¹²⁵ Y. Chen,¹²⁵ J. Duarte,¹²⁵ A. Mott,¹²⁵ H. B. Newman,¹²⁵ C. Pena,¹²⁵ C. Rogan,¹²⁵ M. Spiropulu,¹²⁵ V. Timciuc,¹²⁵ R. Wilkinson,¹²⁵ S. Xie,¹²⁵ R. Y. Zhu,¹²⁵ V. Azzolini,¹²⁶ A. Calamba,¹²⁶ B. Carlson,¹²⁶ T. Ferguson,¹²⁶ Y. Iiyama,¹²⁶ M. Paulini,¹²⁶ J. Russ,¹²⁶ H. Vogel,¹²⁶ I. Vorobiev,¹²⁶ J. P. Cumalat,¹²⁷ W. T. Ford,¹²⁷ A. Gaz,¹²⁷ E. Luiggi Lopez,¹²⁷ U. Nauenberg,¹²⁷ J. G. Smith,¹²⁷ K. Stenson,¹²⁷ K. A. Ulmer,¹²⁷ S. R. Wagner,¹²⁷ J. Alexander,¹²⁸ A. Chatterjee,¹²⁸ J. Chu,¹²⁸ S. Dittmer,¹²⁸ N. Eggert,¹²⁸ N. Mirman,¹²⁸ G. Nicolas Kaufman,¹²⁸ J. R. Patterson,¹²⁸ A. Ryd,¹²⁸ E. Salvati,¹²⁸ L. Skinnari,¹²⁸ W. Sun,¹²⁸ W. D. Teo,¹²⁸ J. Thom,¹²⁸ J. Thompson,¹²⁸ J. Tucker,¹²⁸ Y. Weng,¹²⁸ L. Winstrom,¹²⁸ P. Wittich,¹²⁸ D. Winn,¹²⁹ S. Abdullin,¹³⁰ M. Albrow,¹³⁰ J. Anderson,¹³⁰ G. Apollinari,¹³⁰ L. A. T. Bauerdick,¹³⁰ A. Beretvas,¹³⁰ J. Berryhill,¹³⁰ P. C. Bhat,¹³⁰ G. Bolla,¹³⁰ K. Burkett,¹³⁰ J. N. Butler,¹³⁰ H. W. K. Cheung,¹³⁰ F. Chlebana,¹³⁰ S. Cihangir,¹³⁰ V. D. Elvira,¹³⁰ I. Fisk,¹³⁰ J. Freeman,¹³⁰ Y. Gao,¹³⁰ E. Gottschalk,¹³⁰ L. Gray,¹³⁰ D. Green,¹³⁰ S. Grünendahl,¹³⁰ O. Gutsche,¹³⁰ J. Hanlon,¹³⁰ D. Hare,¹³⁰ R. M. Harris,¹³⁰ J. Hirschauer,¹³⁰ B. Hooberman,¹³⁰ S. Jindariani,¹³⁰ M. Johnson,¹³⁰ U. Joshi,¹³⁰ K. Kaadze,¹³⁰ B. Klima,¹³⁰ B. Kreis,¹³⁰ S. Kwan,¹³⁰ J. Linacre,¹³⁰ D. Lincoln,¹³⁰ R. Lipton,¹³⁰ T. Liu,¹³⁰ J. Lykken,¹³⁰ K. Maeshima,¹³⁰ J. M. Marraffino,¹³⁰ V. I. Martinez Outschoorn,¹³⁰ S. Maruyama,¹³⁰ D. Mason,¹³⁰ P. McBride,¹³⁰ P. Merkel,¹³⁰ K. Mishra,¹³⁰ S. Mrenna,¹³⁰ Y. Musienko,^{130,dd} S. Nahn,¹³⁰ C. Newman-Holmes,¹³⁰ V. O'Dell,¹³⁰ O. Prokofyev,¹³⁰ E. Sexton-Kennedy,¹³⁰ S. Sharma,¹³⁰ A. Soha,¹³⁰ W. J. Spalding,¹³⁰ L. Spiegel,¹³⁰ L. Taylor,¹³⁰ S. Tkaczyk,¹³⁰ N. V. Tran,¹³⁰ L. Uplegger,¹³⁰ E. W. Vaandering,¹³⁰ R. Vidal,¹³⁰ A. Whitbeck,¹³⁰ J. Whitmore,¹³⁰ F. Yang,¹³⁰ D. Acosta,¹³¹ P. Avery,¹³¹ P. Bortignon,¹³¹ D. Bourilkov,¹³¹ M. Carver,¹³¹ T. Cheng,¹³¹ D. Curry,¹³¹ S. Das,¹³¹ M. De Gruttola,¹³¹ G. P. Di Giovanni,¹³¹ R. D. Field,¹³¹ M. Fisher,¹³¹ I. K. Furic,¹³¹ J. Hugon,¹³¹ J. Konigsberg,¹³¹ A. Korytov,¹³¹ T. Kypreos,¹³¹ J. F. Low,¹³¹ K. Matchev,¹³¹ P. Milenovic,^{131,xx} G. Mitselmakher,¹³¹ L. Muniz,¹³¹ A. Rinkevicius,¹³¹ L. Shchutska,¹³¹ M. Snowball,¹³¹ D. Sperka,¹³¹ J. Yelton,¹³¹ M. Zakaria,¹³¹ S. Hewamanage,¹³² S. Linn,¹³² P. Markowitz,¹³² G. Martinez,¹³² J. L. Rodriguez,¹³² T. Adams,¹³³ A. Askew,¹³³ J. Bochenek,¹³³ B. Diamond,¹³³ J. Haas,¹³³ S. Hagopian,¹³³ V. Hagopian,¹³³ K. F. Johnson,¹³³ H. Prosper,¹³³ V. Veeraraghavan,¹³³ M. Weinberg,¹³³ M. M. Baarmand,¹³⁴ M. Hohlmann,¹³⁴ H. Kalakhety,¹³⁴ F. Yumiceva,¹³⁴ M. R. Adams,¹³⁵ L. Apanasevich,¹³⁵ V. E. Bazterra,¹³⁵ D. Berry,¹³⁵ R. R. Betts,¹³⁵ I. Bucinskaite,¹³⁵ R. Cavanaugh,¹³⁵ O. Evdokimov,¹³⁵ L. Gauthier,¹³⁵ C. E. Gerber,¹³⁵ D. J. Hofman,¹³⁵ S. Khalatyan,¹³⁵ P. Kurt,¹³⁵ D. H. Moon,¹³⁵ C. O'Brien,¹³⁵ C. Silkworth,¹³⁵ P. Turner,¹³⁵ N. Varelas,¹³⁵ E. A. Albayrak,^{136,yy} B. Bilki,^{136,zz} W. Clarida,¹³⁶ K. Dilsiz,¹³⁶ F. Duru,¹³⁶ M. Haytmyradov,¹³⁶ J.-P. Merlo,¹³⁶ H. Mermerkaya,^{136,aaa} A. Mestvirishvili,¹³⁶ A. Moeller,¹³⁶ J. Nachtman,¹³⁶ H. Ogul,¹³⁶ Y. Onel,¹³⁶ F. Ozok,^{136,yy} A. Penzo,¹³⁶ R. Rahmat,¹³⁶ S. Sen,¹³⁶ P. Tan,¹³⁶ E. Tiras,¹³⁶ J. Wetzel,¹³⁶ T. Yetkin,^{136,bbb} K. Yi,¹³⁶ B. A. Barnett,¹³⁷ B. Blumenfeld,¹³⁷ S. Bolognesi,¹³⁷ D. Fehling,¹³⁷ A. V. Gritsan,¹³⁷ P. Maksimovic,¹³⁷ C. Martin,¹³⁷ M. Swartz,¹³⁷ P. Baringer,¹³⁸ A. Bean,¹³⁸ G. Benelli,¹³⁸ C. Bruner,¹³⁸ R. P. Kenny III,¹³⁸ M. Malek,¹³⁸ M. Murray,¹³⁸ D. Noonan,¹³⁸ S. Sanders,¹³⁸ J. Sekaric,¹³⁸ R. Stringer,¹³⁸ Q. Wang,¹³⁸ J. S. Wood,¹³⁸ A. F. Barfuss,¹³⁹ I. Chakaberia,¹³⁹ A. Ivanov,¹³⁹ S. Khalil,¹³⁹ M. Makouski,¹³⁹ Y. Maravin,¹³⁹ L. K. Saini,¹³⁹ S. Shrestha,¹³⁹ N. Skhirtladze,¹³⁹ I. Svintradze,¹³⁹ J. Gronberg,¹⁴⁰ D. Lange,¹⁴⁰ F. Rebassoo,¹⁴⁰ D. Wright,¹⁴⁰ A. Baden,¹⁴¹ A. Belloni,¹⁴¹

B. Calvert,¹⁴¹ S. C. Eno,¹⁴¹ J. A. Gomez,¹⁴¹ N. J. Hadley,¹⁴¹ R. G. Kellogg,¹⁴¹ T. Kolberg,¹⁴¹ Y. Lu,¹⁴¹ M. Marionneau,¹⁴¹ A. C. Mignerey,¹⁴¹ K. Pedro,¹⁴¹ A. Skuja,¹⁴¹ M. B. Tonjes,¹⁴¹ S. C. Tonwar,¹⁴¹ A. Apyan,¹⁴² R. Barbieri,¹⁴² G. Bauer,¹⁴² W. Busza,¹⁴² I. A. Cali,¹⁴² M. Chan,¹⁴² L. Di Matteo,¹⁴² V. Dutta,¹⁴² G. Gomez Ceballos,¹⁴² M. Goncharov,¹⁴² D. Gulhan,¹⁴² M. Klute,¹⁴² Y. S. Lai,¹⁴² Y.-J. Lee,¹⁴² A. Levin,¹⁴² P. D. Luckey,¹⁴² T. Ma,¹⁴² C. Paus,¹⁴² D. Ralph,¹⁴² C. Roland,¹⁴² G. Roland,¹⁴² G. S. F. Stephens,¹⁴² F. Stöckli,¹⁴² K. Sumorok,¹⁴² D. Velicanu,¹⁴² J. Veverka,¹⁴² B. Wyslouch,¹⁴² M. Yang,¹⁴² M. Zanetti,¹⁴² V. Zhukova,¹⁴² B. Dahmes,¹⁴³ A. Gude,¹⁴³ S. C. Kao,¹⁴³ K. Klapoetke,¹⁴³ Y. Kubota,¹⁴³ J. Mans,¹⁴³ N. Pastika,¹⁴³ R. Rusack,¹⁴³ A. Singovsky,¹⁴³ N. Tambe,¹⁴³ J. Turkewitz,¹⁴³ J. G. Acosta,¹⁴⁴ S. Oliveros,¹⁴⁴ E. Avdeeva,¹⁴⁵ K. Bloom,¹⁴⁵ S. Bose,¹⁴⁵ D. R. Claes,¹⁴⁵ A. Dominguez,¹⁴⁵ R. Gonzalez Suarez,¹⁴⁵ J. Keller,¹⁴⁵ D. Knowlton,¹⁴⁵ I. Kravchenko,¹⁴⁵ J. Lazo-Flores,¹⁴⁵ S. Malik,¹⁴⁵ F. Meier,¹⁴⁵ G. R. Snow,¹⁴⁵ M. Zvada,¹⁴⁵ J. Dolen,¹⁴⁶ A. Godshalk,¹⁴⁶ I. Iashvili,¹⁴⁶ A. Kharchilava,¹⁴⁶ A. Kumar,¹⁴⁶ S. Rappoccio,¹⁴⁶ G. Alverson,¹⁴⁷ E. Barberis,¹⁴⁷ D. Baumgartel,¹⁴⁷ M. Chasco,¹⁴⁷ J. Haley,¹⁴⁷ A. Massironi,¹⁴⁷ D. M. Morse,¹⁴⁷ D. Nash,¹⁴⁷ T. Orimoto,¹⁴⁷ D. Trocino,¹⁴⁷ R.-J. Wang,¹⁴⁷ D. Wood,¹⁴⁷ J. Zhang,¹⁴⁷ K. A. Hahn,¹⁴⁸ A. Kubik,¹⁴⁸ N. Mucia,¹⁴⁸ N. Odell,¹⁴⁸ B. Pollack,¹⁴⁸ A. Pozdnyakov,¹⁴⁸ M. Schmitt,¹⁴⁸ S. Stoynev,¹⁴⁸ K. Sung,¹⁴⁸ M. Velasco,¹⁴⁸ S. Won,¹⁴⁸ A. Brinkerhoff,¹⁴⁹ K. M. Chan,¹⁴⁹ A. Drozdetskiy,¹⁴⁹ M. Hildreth,¹⁴⁹ C. Jessop,¹⁴⁹ D. J. Karmgard,¹⁴⁹ N. Kellams,¹⁴⁹ K. Lannon,¹⁴⁹ W. Luo,¹⁴⁹ S. Lynch,¹⁴⁹ N. Marinelli,¹⁴⁹ T. Pearson,¹⁴⁹ M. Planer,¹⁴⁹ R. Ruchti,¹⁴⁹ N. Valls,¹⁴⁹ M. Wayne,¹⁴⁹ M. Wolf,¹⁴⁹ A. Woodard,¹⁴⁹ L. Antonelli,¹⁵⁰ J. Brinson,¹⁵⁰ B. Bylsma,¹⁵⁰ L. S. Durkin,¹⁵⁰ S. Flowers,¹⁵⁰ C. Hill,¹⁵⁰ R. Hughes,¹⁵⁰ K. Kotov,¹⁵⁰ T. Y. Ling,¹⁵⁰ D. Puigh,¹⁵⁰ M. Rodenburg,¹⁵⁰ G. Smith,¹⁵⁰ B. L. Winer,¹⁵⁰ H. Wolfe,¹⁵⁰ H. W. Wulsin,¹⁵⁰ O. Driga,¹⁵¹ P. Elmer,¹⁵¹ P. Hebda,¹⁵¹ A. Hunt,¹⁵¹ S. A. Koay,¹⁵¹ P. Lujan,¹⁵¹ D. Marlow,¹⁵¹ T. Medvedeva,¹⁵¹ M. Mooney,¹⁵¹ J. Olsen,¹⁵¹ P. Piroué,¹⁵¹ X. Quan,¹⁵¹ H. Saka,¹⁵¹ D. Stickland,^{151,c} C. Tully,¹⁵¹ J. S. Werner,¹⁵¹ A. Zuranski,¹⁵¹ E. Brownson,¹⁵² H. Mendez,¹⁵² J. E. Ramirez Vargas,¹⁵² V. E. Barnes,¹⁵³ D. Benedetti,¹⁵³ D. Bortoletto,¹⁵³ M. De Mattia,¹⁵³ L. Gutay,¹⁵³ Z. Hu,¹⁵³ M. K. Jha,¹⁵³ M. Jones,¹⁵³ K. Jung,¹⁵³ M. Kress,¹⁵³ N. Leonardo,¹⁵³ D. Lopes Pegna,¹⁵³ V. Maroussov,¹⁵³ D. H. Miller,¹⁵³ N. Neumeister,¹⁵³ B. C. Radburn-Smith,¹⁵³ X. Shi,¹⁵³ I. Shipsey,¹⁵³ D. Silvers,¹⁵³ A. Svyatkovskiy,¹⁵³ F. Wang,¹⁵³ W. Xie,¹⁵³ L. Xu,¹⁵³ H. D. Yoo,¹⁵³ J. Zablocki,¹⁵³ Y. Zheng,¹⁵³ N. Parashar,¹⁵⁴ J. Stupak,¹⁵⁴ A. Adair,¹⁵⁵ B. Akgun,¹⁵⁵ K. M. Ecklund,¹⁵⁵ F. J. M. Geurts,¹⁵⁵ W. Li,¹⁵⁵ B. Michlin,¹⁵⁵ B. P. Padley,¹⁵⁵ R. Redjimi,¹⁵⁵ J. Roberts,¹⁵⁵ J. Zabel,¹⁵⁵ B. Betchart,¹⁵⁶ A. Bodek,¹⁵⁶ R. Covarelli,¹⁵⁶ P. de Barbaro,¹⁵⁶ R. Demina,¹⁵⁶ Y. Eshaq,¹⁵⁶ T. Ferbel,¹⁵⁶ A. Garcia-Bellido,¹⁵⁶ P. Goldenzweig,¹⁵⁶ J. Han,¹⁵⁶ A. Harel,¹⁵⁶ A. Khukhunaishvili,¹⁵⁶ G. Petrillo,¹⁵⁶ D. Vishnevskiy,¹⁵⁶ R. Ciesielski,¹⁵⁷ L. Demortier,¹⁵⁷ K. Goulianos,¹⁵⁷ G. Lungu,¹⁵⁷ C. Mesropian,¹⁵⁷ S. Arora,¹⁵⁸ A. Barker,¹⁵⁸ J. P. Chou,¹⁵⁸ C. Contreras-Campana,¹⁵⁸ E. Contreras-Campana,¹⁵⁸ D. Duggan,¹⁵⁸ D. Ferencek,¹⁵⁸ Y. Gershtein,¹⁵⁸ R. Gray,¹⁵⁸ E. Halkiadakis,¹⁵⁸ D. Hidas,¹⁵⁸ S. Kaplan,¹⁵⁸ A. Lath,¹⁵⁸ S. Panwalkar,¹⁵⁸ M. Park,¹⁵⁸ R. Patel,¹⁵⁸ S. Salur,¹⁵⁸ S. Schnetzer,¹⁵⁸ S. Somalwar,¹⁵⁸ R. Stone,¹⁵⁸ S. Thomas,¹⁵⁸ P. Thomassen,¹⁵⁸ M. Walker,¹⁵⁸ K. Rose,¹⁵⁹ S. Spanier,¹⁵⁹ A. York,¹⁵⁹ O. Bouhali,^{160,ccc} A. Castaneda Hernandez,¹⁶⁰ R. Eusebi,¹⁶⁰ W. Flanagan,¹⁶⁰ J. Gilmore,¹⁶⁰ T. Kamon,^{160,ddd} V. Khotilovich,¹⁶⁰ V. Krutelyov,¹⁶⁰ R. Montalvo,¹⁶⁰ I. Osipenkov,¹⁶⁰ Y. Pakhotin,¹⁶⁰ A. Perloff,¹⁶⁰ J. Roe,¹⁶⁰ A. Rose,¹⁶⁰ A. Safonov,¹⁶⁰ T. Sakuma,¹⁶⁰ I. Suarez,¹⁶⁰ A. Tatarinov,¹⁶⁰ N. Akchurin,¹⁶¹ C. Cowden,¹⁶¹ J. Damgov,¹⁶¹ C. Dragoiu,¹⁶¹ P. R. Duerdo,¹⁶¹ J. Faulkner,¹⁶¹ K. Kovitanggoon,¹⁶¹ S. Kunori,¹⁶¹ S. W. Lee,¹⁶¹ T. Libeiro,¹⁶¹ I. Volobouev,¹⁶¹ E. Appelt,¹⁶² A. G. Delannoy,¹⁶² S. Greene,¹⁶² A. Gurrola,¹⁶² W. Johns,¹⁶² C. Maguire,¹⁶² Y. Mao,¹⁶² A. Melo,¹⁶² M. Sharma,¹⁶² P. Sheldon,¹⁶² B. Snook,¹⁶² S. Tuo,¹⁶² J. Velkovska,¹⁶² M. W. Arenton,¹⁶³ S. Boutle,¹⁶³ B. Cox,¹⁶³ B. Francis,¹⁶³ J. Goodell,¹⁶³ R. Hirosky,¹⁶³ A. Ledovskoy,¹⁶³ H. Li,¹⁶³ C. Lin,¹⁶³ C. Neu,¹⁶³ J. Wood,¹⁶³ C. Clarke,¹⁶⁴ R. Harr,¹⁶⁴ P. E. Karchin,¹⁶⁴ C. Kottachchi Kankanamge Don,¹⁶⁴ P. Lamichhane,¹⁶⁴ J. Sturdy,¹⁶⁴ D. A. Belknap,¹⁶⁵ D. Carlsmith,¹⁶⁵ M. Cepeda,¹⁶⁵ S. Dasu,¹⁶⁵ L. Dodd,¹⁶⁵ S. Duric,¹⁶⁵ E. Friis,¹⁶⁵ R. Hall-Wilton,¹⁶⁵ M. Herndon,¹⁶⁵ A. Hervé,¹⁶⁵ P. Klabbers,¹⁶⁵ A. Lanaro,¹⁶⁵ C. Lazaridis,¹⁶⁵ A. Levine,¹⁶⁵ R. Loveless,¹⁶⁵ A. Mohapatra,¹⁶⁵ I. Ojalvo,¹⁶⁵ T. Perry,¹⁶⁵ G. A. Pierro,¹⁶⁵ G. Polese,¹⁶⁵ I. Ross,¹⁶⁵ T. Sarangi,¹⁶⁵ A. Savin,¹⁶⁵ W. H. Smith,¹⁶⁵ D. Taylor,¹⁶⁵ P. Verwilligen,¹⁶⁵ C. Vuosalo,¹⁶⁵ and N. Woods¹⁶⁵

(CMS Collaboration)

¹*Yerevan Physics Institute, Yerevan, Armenia*²*Institut für Hochenergiephysik der OeAW, Wien, Austria*³*National Centre for Particle and High Energy Physics, Minsk, Belarus*⁴*Universiteit Antwerpen, Antwerpen, Belgium*⁵*Vrije Universiteit Brussel, Brussel, Belgium*

- ⁶*Université Libre de Bruxelles, Bruxelles, Belgium*
⁷*Ghent University, Ghent, Belgium*
⁸*Université Catholique de Louvain, Louvain-la-Neuve, Belgium*
⁹*Université de Mons, Mons, Belgium*
¹⁰*Centro Brasileiro de Pesquisas Físicas, Rio de Janeiro, Brazil*
¹¹*Universidade do Estado do Rio de Janeiro, Rio de Janeiro, Brazil*
^{12a}*Universidade Estadual Paulista, São Paulo, Brazil*
^{12b}*Universidade Federal do ABC, São Paulo, Brazil*
¹³*Institute for Nuclear Research and Nuclear Energy, Sofia, Bulgaria*
¹⁴*University of Sofia, Sofia, Bulgaria*
¹⁵*Institute of High Energy Physics, Beijing, China*
¹⁶*State Key Laboratory of Nuclear Physics and Technology, Peking University, Beijing, China*
¹⁷*Universidad de Los Andes, Bogota, Colombia*
¹⁸*University of Split, Faculty of Electrical Engineering, Mechanical Engineering and Naval Architecture, Split, Croatia*
¹⁹*University of Split, Faculty of Science, Split, Croatia*
²⁰*Institute Rudjer Boskovic, Zagreb, Croatia*
²¹*University of Cyprus, Nicosia, Cyprus*
²²*Charles University, Prague, Czech Republic*
²³*Academy of Scientific Research and Technology of the Arab Republic of Egypt, Egyptian Network of High Energy Physics, Cairo, Egypt*
²⁴*National Institute of Chemical Physics and Biophysics, Tallinn, Estonia*
²⁵*Department of Physics, University of Helsinki, Helsinki, Finland*
²⁶*Helsinki Institute of Physics, Helsinki, Finland*
²⁷*Lappeenranta University of Technology, Lappeenranta, Finland*
²⁸*DSM/IRFU, CEA Saclay, 91191 Gif-sur-Yvette cedex, France*
²⁹*Laboratoire Leprince-Ringuet, Ecole Polytechnique, IN2P3-CNRS, Palaiseau, France*
³⁰*Institut Pluridisciplinaire Hubert Curien, Université de Strasbourg, Université de Haute Alsace Mulhouse, CNRS/IN2P3, Strasbourg, France*
³¹*Centre de Calcul de l'Institut National de Physique Nucléaire et de Physique des Particules, CNRS/IN2P3, Villeurbanne, France*
³²*Université de Lyon, Université Claude Bernard Lyon 1, CNRS-IN2P3, Institut de Physique Nucléaire de Lyon, Villeurbanne, France*
³³*Institute of High Energy Physics and Informatization, Tbilisi State University, Tbilisi, Georgia*
³⁴*RWTH Aachen University, I. Physikalisches Institut, Aachen, Germany*
³⁵*RWTH Aachen University, III. Physikalisches Institut A, Aachen, Germany*
³⁶*RWTH Aachen University, III. Physikalisches Institut B, Aachen, Germany*
³⁷*Deutsches Elektronen-Synchrotron, Hamburg, Germany*
³⁸*University of Hamburg, Hamburg, Germany*
³⁹*Institut für Experimentelle Kernphysik, Karlsruhe, Germany*
⁴⁰*Institute of Nuclear and Particle Physics (INPP), NCSR Demokritos, Aghia Paraskevi, Greece*
⁴¹*University of Athens, Athens, Greece*
⁴²*University of Ioánnina, Ioánnina, Greece*
⁴³*Wigner Research Centre for Physics, Budapest, Hungary*
⁴⁴*Institute of Nuclear Research ATOMKI, Debrecen, Hungary*
⁴⁵*University of Debrecen, Debrecen, Hungary*
⁴⁶*National Institute of Science Education and Research, Bhubaneswar, India*
⁴⁷*Panjab University, Chandigarh, India*
⁴⁸*University of Delhi, Delhi, India*
⁴⁹*Saha Institute of Nuclear Physics, Kolkata, India*
⁵⁰*Bhabha Atomic Research Centre, Mumbai, India*
⁵¹*Tata Institute of Fundamental Research, Mumbai, India*
⁵²*Institute for Research in Fundamental Sciences (IPM), Tehran, Iran*
⁵³*University College Dublin, Dublin, Ireland*
^{54a}*INFN Sezione di Bari, Bari, Italy*
^{54b}*Università di Bari, Bari, Italy*
^{54c}*Politecnico di Bari, Bari, Italy*
^{55a}*INFN Sezione di Bologna, Bologna, Italy*
^{55b}*Università di Bologna, Bologna, Italy*
^{56a}*INFN Sezione di Catania, Catania, Italy*

- ^{56b} *Università di Catania, Catania, Italy*
^{56c} *CSFNSM, Catania, Italy*
^{57a} *INFN Sezione di Firenze, Firenze, Italy*
^{57b} *Università di Firenze, Firenze, Italy*
⁵⁸ *INFN Laboratori Nazionali di Frascati, Frascati, Italy*
^{59a} *INFN Sezione di Genova, Genova, Italy*
^{59b} *Università di Genova, Genova, Italy*
^{60a} *INFN Sezione di Milano-Bicocca, Milano, Italy*
^{60b} *Università di Milano-Bicocca, Milano, Italy*
^{61a} *INFN Sezione di Napoli, Roma, Italy*
^{61b} *Università di Napoli 'Federico II', Roma, Italy*
^{61c} *Università della Basilicata, Roma, Italy*
^{61d} *Università G. Marconi, Roma, Italy*
^{62a} *INFN Sezione di Padova, Trento, Italy*
^{62b} *Università di Padova, Trento, Italy*
^{62c} *Università di Trento, Trento, Italy*
^{63a} *INFN Sezione di Pavia, Pavia, Italy*
^{63b} *Università di Pavia, Pavia, Italy*
^{64a} *INFN Sezione di Perugia, Perugia, Italy*
^{64b} *Università di Perugia, Perugia, Italy*
^{65a} *INFN Sezione di Pisa, Pisa, Italy*
^{65b} *Università di Pisa, Pisa, Italy*
^{65c} *Scuola Normale Superiore di Pisa, Pisa, Italy*
^{66a} *INFN Sezione di Roma, Roma, Italy*
^{66b} *Università di Roma, Roma, Italy*
^{67a} *INFN Sezione di Torino, Novara, Italy*
^{67b} *Università di Torino, Novara, Italy*
^{67c} *Università del Piemonte Orientale, Novara, Italy*
^{68a} *INFN Sezione di Trieste, Trieste, Italy*
^{68b} *Università di Trieste, Trieste, Italy*
⁶⁹ *Kangwon National University, Chunchon, Korea*
⁷⁰ *Kyungpook National University, Daegu, Korea*
⁷¹ *Chonbuk National University, Jeonju, Korea*
⁷² *Chonnam National University, Institute for Universe and Elementary Particles, Kwangju, Korea*
⁷³ *Korea University, Seoul, Korea*
⁷⁴ *University of Seoul, Seoul, Korea*
⁷⁵ *Sungkyunkwan University, Suwon, Korea*
⁷⁶ *Vilnius University, Vilnius, Lithuania*
⁷⁷ *National Centre for Particle Physics, Universiti Malaya, Kuala Lumpur, Malaysia*
⁷⁸ *Centro de Investigacion y de Estudios Avanzados del IPN, Mexico City, Mexico*
⁷⁹ *Universidad Iberoamericana, Mexico City, Mexico*
⁸⁰ *Benemerita Universidad Autonoma de Puebla, Puebla, Mexico*
⁸¹ *Universidad Autónoma de San Luis Potosí, San Luis Potosí, Mexico*
⁸² *University of Auckland, Auckland, New Zealand*
⁸³ *University of Canterbury, Christchurch, New Zealand*
⁸⁴ *National Centre for Physics, Quaid-I-Azam University, Islamabad, Pakistan*
⁸⁵ *National Centre for Nuclear Research, Swierk, Poland*
⁸⁶ *Institute of Experimental Physics, Faculty of Physics, University of Warsaw, Warsaw, Poland*
⁸⁷ *Laboratório de Instrumentação e Física Experimental de Partículas, Lisboa, Portugal*
⁸⁸ *Joint Institute for Nuclear Research, Dubna, Russia*
⁸⁹ *Petersburg Nuclear Physics Institute, Gatchina (St. Petersburg), Russia*
⁹⁰ *Institute for Nuclear Research, Moscow, Russia*
⁹¹ *Institute for Theoretical and Experimental Physics, Moscow, Russia*
⁹² *P.N. Lebedev Physical Institute, Moscow, Russia*
⁹³ *Skobeltsyn Institute of Nuclear Physics, Lomonosov Moscow State University, Moscow, Russia*
⁹⁴ *State Research Center of Russian Federation, Institute for High Energy Physics, Protvino, Russia*
⁹⁵ *University of Belgrade, Faculty of Physics and Vinca Institute of Nuclear Sciences, Belgrade, Serbia*
⁹⁶ *Centro de Investigaciones Energéticas Medioambientales y Tecnológicas (CIEMAT), Madrid, Spain*
⁹⁷ *Universidad Autónoma de Madrid, Madrid, Spain*
⁹⁸ *Universidad de Oviedo, Oviedo, Spain*

- ⁹⁹*Instituto de Física de Cantabria (IFCA), CSIC-Universidad de Cantabria, Santander, Spain*
¹⁰⁰*CERN, European Organization for Nuclear Research, Geneva, Switzerland*
¹⁰¹*Paul Scherrer Institut, Villigen, Switzerland*
¹⁰²*Institute for Particle Physics, ETH Zurich, Zurich, Switzerland*
¹⁰³*Universität Zürich, Zurich, Switzerland*
¹⁰⁴*National Central University, Chung-Li, Taiwan*
¹⁰⁵*National Taiwan University (NTU), Taipei, Taiwan*
¹⁰⁶*Chulalongkorn University, Faculty of Science, Department of Physics, Bangkok, Thailand*
¹⁰⁷*Cukurova University, Adana, Turkey*
¹⁰⁸*Middle East Technical University, Physics Department, Ankara, Turkey*
¹⁰⁹*Bogazici University, Istanbul, Turkey*
¹¹⁰*Istanbul Technical University, Istanbul, Turkey*
¹¹¹*National Scientific Center, Kharkov Institute of Physics and Technology, Kharkov, Ukraine*
¹¹²*University of Bristol, Bristol, United Kingdom*
¹¹³*Rutherford Appleton Laboratory, Didcot, United Kingdom*
¹¹⁴*Imperial College, London, United Kingdom*
¹¹⁵*Brunel University, Uxbridge, United Kingdom*
¹¹⁶*Baylor University, Waco, Texas 76798, USA*
¹¹⁷*The University of Alabama, Tuscaloosa, Alabama 35487, USA*
¹¹⁸*Boston University, Boston, Massachusetts 02215, USA*
¹¹⁹*Brown University, Providence, Rhode Island 02912, USA*
¹²⁰*University of California, Davis, Davis, California 95616, USA*
¹²¹*University of California, Los Angeles, Los Angeles, California 90095, USA*
¹²²*University of California, Riverside, Riverside, California 92521, USA*
¹²³*University of California, San Diego, La Jolla, California 92093, USA*
¹²⁴*University of California, Santa Barbara, Santa Barbara, California 93106, USA*
¹²⁵*California Institute of Technology, Pasadena, California 91125, USA*
¹²⁶*Carnegie Mellon University, Pittsburgh, Pennsylvania 15213, USA*
¹²⁷*University of Colorado at Boulder, Boulder, Colorado 80309, USA*
¹²⁸*Cornell University, Ithaca, New York 14853, USA*
¹²⁹*Fairfield University, Fairfield, Connecticut 06430, USA*
¹³⁰*Fermi National Accelerator Laboratory, Batavia, Illinois 60510, USA*
¹³¹*University of Florida, Gainesville, Florida 32611, USA*
¹³²*Florida International University, Miami, Florida 33199, USA*
¹³³*Florida State University, Tallahassee, Florida 32306, USA*
¹³⁴*Florida Institute of Technology, Melbourne, Florida 32901, USA*
¹³⁵*University of Illinois at Chicago (UIC), Chicago, Illinois 60607, USA*
¹³⁶*The University of Iowa, Iowa City, Iowa 52242, USA*
¹³⁷*Johns Hopkins University, Baltimore, Maryland 21218, USA*
¹³⁸*The University of Kansas, Lawrence, Kansas 66045, USA*
¹³⁹*Kansas State University, Manhattan, Kansas 66506, USA*
¹⁴⁰*Lawrence Livermore National Laboratory, Livermore, California 94551, USA*
¹⁴¹*University of Maryland, College Park, Maryland 20742, USA*
¹⁴²*Massachusetts Institute of Technology, Cambridge, Massachusetts 02139, USA*
¹⁴³*University of Minnesota, Minneapolis, Minnesota 55455, USA*
¹⁴⁴*University of Mississippi, Oxford, Mississippi 38677, USA*
¹⁴⁵*University of Nebraska-Lincoln, Lincoln, Nebraska 68588, USA*
¹⁴⁶*State University of New York at Buffalo, Buffalo, New York 14260, USA*
¹⁴⁷*Northeastern University, Boston, Massachusetts 02115, USA*
¹⁴⁸*Northwestern University, Evanston, Illinois 60208, USA*
¹⁴⁹*University of Notre Dame, Notre Dame, Indiana 46556, USA*
¹⁵⁰*The Ohio State University, Columbus, Ohio 43210, USA*
¹⁵¹*Princeton University, Princeton, New Jersey 08542, USA*
¹⁵²*University of Puerto Rico, Mayaguez, Puerto Rico 00681, USA*
¹⁵³*Purdue University, West Lafayette, Indiana 47907, USA*
¹⁵⁴*Purdue University Calumet, Hammond, Indiana 46323, USA*
¹⁵⁵*Rice University, Houston, Texas 77251, USA*
¹⁵⁶*University of Rochester, Rochester, New York 14627, USA*
¹⁵⁷*The Rockefeller University, New York, New York 10021, USA*
¹⁵⁸*Rutgers, The State University of New Jersey, Piscataway, New Jersey 08854, USA*

- ¹⁵⁹University of Tennessee, Knoxville, Tennessee 37996, USA
¹⁶⁰Texas A&M University, College Station, Texas 77843, USA
¹⁶¹Texas Tech University, Lubbock, Texas 79409, USA
¹⁶²Vanderbilt University, Nashville, Tennessee 37235, USA
¹⁶³University of Virginia, Charlottesville, Virginia 22904, USA
¹⁶⁴Wayne State University, Detroit, Michigan 48202, USA
¹⁶⁵University of Wisconsin, Madison, Wisconsin 53706, USA

- ^aDeceased.
^bAlso at Vienna University of Technology, Vienna, Austria.
^cAlso at CERN, European Organization for Nuclear Research, Geneva, Switzerland.
^dAlso at Institut Pluridisciplinaire Hubert Curien, Université de Strasbourg, Université de Haute Alsace Mulhouse, CNRS/IN2P3, Strasbourg, France.
^eAlso at National Institute of Chemical Physics and Biophysics, Tallinn, Estonia.
^fAlso at Skobeltsyn Institute of Nuclear Physics, Lomonosov Moscow State University, Moscow, Russia.
^gAlso at Universidade Estadual de Campinas, Campinas, Brazil.
^hAlso at Laboratoire Leprince-Ringuet, Ecole Polytechnique, IN2P3-CNRS, Palaiseau, France.
ⁱAlso at Joint Institute for Nuclear Research, Dubna, Russia.
^jAlso at Suez University, Suez, Egypt.
^kAlso at Cairo University, Cairo, Egypt.
^lAlso at Fayoum University, El-Fayoum, Egypt.
^mAlso at British University in Egypt, Cairo, Egypt.
ⁿAlso at Ain Shams University, Cairo, Egypt.
^oAlso at Université de Haute Alsace, Mulhouse, France.
^pAlso at Brandenburg University of Technology, Cottbus, Germany.
^qAlso at Institute of Nuclear Research ATOMKI, Debrecen, Hungary.
^rAlso at Eötvös Loránd University, Budapest, Hungary.
^sAlso at University of Debrecen, Debrecen, Hungary.
^tAlso at University of Visva-Bharati, Santiniketan, India.
^uAlso at King Abdulaziz University, Jeddah, Saudi Arabia.
^vAlso at University of Ruhuna, Matara, Sri Lanka.
^wAlso at Isfahan University of Technology, Isfahan, Iran.
^xAlso at Sharif University of Technology, Tehran, Iran.
^yAlso at Plasma Physics Research Center, Science and Research Branch, Islamic Azad University, Tehran, Iran.
^zAlso at Università degli Studi di Siena, Siena, Italy.
^{aa}Also at Centre National de la Recherche Scientifique (CNRS) - IN2P3, Paris, France.
^{bb}Also at Purdue University, West Lafayette, Indiana 47907, USA.
^{cc}Also at Universidad Michoacana de San Nicolas de Hidalgo, Morelia, Mexico.
^{dd}Also at Institute for Nuclear Research, Moscow, Russia.
^{ee}Also at St. Petersburg State Polytechnical University, St. Petersburg, Russia.
^{ff}Also at Faculty of Physics, University of Belgrade, Belgrade, Serbia.
^{gg}Also at Facoltà Ingegneria, Università di Roma, Roma, Italy.
^{hh}Also at Scuola Normale e Sezione dell'INFN, Pisa, Italy.
ⁱⁱAlso at University of Athens, Athens, Greece.
^{jj}Also at Paul Scherrer Institut, Villigen, Switzerland.
^{kk}Also at Institute for Theoretical and Experimental Physics, Moscow, Russia.
^{ll}Also at Albert Einstein Center for Fundamental Physics, Bern, Switzerland.
^{mm}Also at Gaziosmanpasa University, Tokat, Turkey.
ⁿⁿAlso at Adiyaman University, Adiyaman, Turkey.
^{oo}Also at Cag University, Mersin, Turkey.
^{pp}Also at Anadolu University, Eskisehir, Turkey.
^{qq}Also at Izmir Institute of Technology, Izmir, Turkey.
^{rr}Also at Necmettin Erbakan University, Konya, Turkey.
^{ss}Also at Ozyegin University, Istanbul, Turkey.
^{tt}Also at Marmara University, Istanbul, Turkey.
^{uu}Also at Kafkas University, Kars, Turkey.
^{vv}Also at Rutherford Appleton Laboratory, Didcot, United Kingdom.
^{ww}Also at School of Physics and Astronomy, University of Southampton, Southampton, United Kingdom.
^{xx}Also at University of Belgrade, Faculty of Physics and Vinca Institute of Nuclear Sciences, Belgrade, Serbia.
^{yy}Also at Mimar Sinan University, Istanbul, Istanbul, Turkey.

^{zz}Also at Argonne National Laboratory, Argonne, Illinois, USA.

^{aaa}Also at Erzincan University, Erzincan, Turkey.

^{bbb}Also at Yildiz Technical University, Istanbul, Turkey.

^{ccc}Also at Texas A&M University at Qatar, Doha, Qatar.

^{ddd}Also at Kyungpook National University, Daegu, Korea.