

REPORT
on
-A SUMMER RESORT HOTEL-
in Siam

As Partial Fulfillment of
the requirements for
the Degree of Bachelor In Architecture
from
Massachusetts Institute of Technology

MOMLUANG SOBHIT

May 11 1938

M.I.T. Dormitories
Cambridge Massachusetts

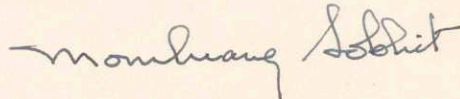
May 11 1938

Dean William Emerson
Chairman of the Thesis Committee
School of Architecture
Massachusetts Institute of Technology
Boston, Massachusetts

Dear Sir:

As partial fulfillment of the requirements for the Degree of Bachelor in Architecture, this report and the accompanying drawings of "A Summer Resort Hotel" at Hua Hin in Siam are submitted.

Respectfully yours,

A handwritten signature in cursive script, reading "Momluang Sobhit". The signature is written in dark ink and is positioned above the typed name.

Momluang Sobhit

(Copy)

March 9th, 1938

Mr. M. Sobhit,
M. I. T.

Dear Sobhit:

In acknowledgement of your favor of the eighth instant, in which you give as the subject of your Thesis for the degree of Bachelor in Architecture "A Summer Resort Hotel," and I wish to express my approval of this as a subject, but would urge upon you the necessity of securing definite information as to contour conditions on the site in question and other information as to accessibility of the public to the location and facilities for the disposal of sewage and supply of water, if these do not already exist. Is this building to be erected in this country or in your own country?

Please let me have your program at your early convenience.

Sincerely yours,

Wm. Emerson

William Emerson, Dean
School of Architecture

WE/h

-TABLE OF CONTENTS-

.....

Acknowledgments	1
Introduction	2
General criticism of State Railway Hotel	6
Conclusions	8
Original program	10
Revised program	12
Site	13
Information	16
Type of building	17
Facade and surrounding area	18
Scope	20
Analysis of the problem	21
General design	22
First floor	24
Second floor	34
Third floor	37
Fourth floor	38
Fifth floor	40
Roof	41

Basement	42
Terrace	43
Construction	44
Service quarters :	47
Bibliographies	48

-ACKNOWLEDGEMENTS-

The author is greatly in debt to the following persons for their kind interest and aids and the practical information.

Dean William Emerson	School of Architecture Mass. Inst. of Technology
Professor Walter C. Voss	Dept. of Civil Engineering Mass. Inst. of Technology
Mr. Burakam Kovit	Div. of City Planning Dept. of Public and Municipal Works, Bangkok, Siam
Mr. Nidhet Kolkit	Div. of Design and Drafting Dept. of State Railway Bangkok, Siam
Miss Chareon Jubandhu	Proprietor of "Supanee," the Beauty Parlor Bangkok, Siam

INTRODUCTION:

Situated at the corner of South Eastern Asia is the Kingdom of Siam which is inhabited by the Thai race, a separate branch of the Mongolian migrated from Central Asia. During the twelfth century, Buddhism spreaded from India into Siam and was adopted as the national religion. Along with religion, Indian culture including language, mythology, literature, arts, and customs flourished. Old Siam was a land of romance and Oriental splendor with her numerous delicately constructed colorful temples---a unique product of Siamese architecture which bears no resemblance in the world.

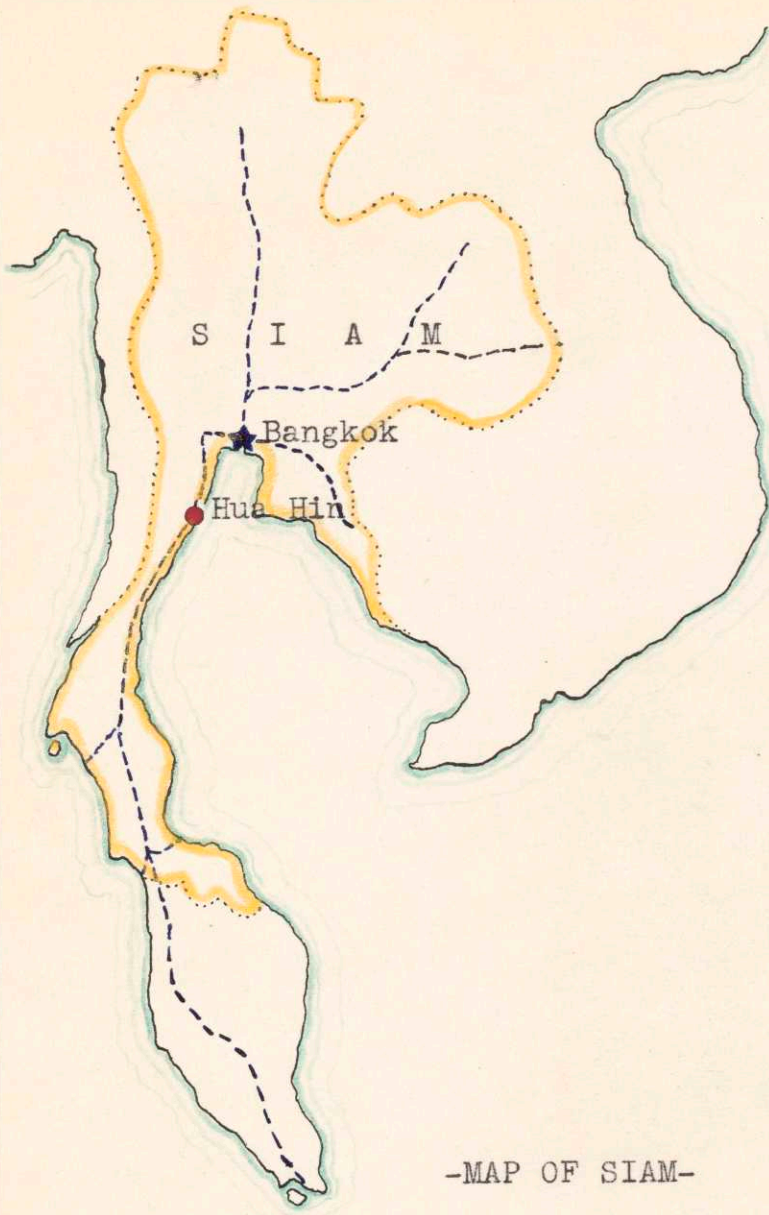
It was not until the middle of the nineteenth century that Siam began the national program of westernization. Typical of westernized Orient, a Siamese city consists of a medley of modern buildings with old Siamese architectural works standing out in contrast. The present Kingdom of Siam has an area of 198,189 square miles with a population of over 14 million people.

The tropical climate exercised a marked influence on the character of the people. They are artistic and peaceful by temperament. There are only three seasons according to the Siamese classification, the dry or hot season, the cold season, and the rainy season. During the dry season, the temperature is well above 95 F. The bright scourging sun

compells the people to stay in the shade during the hot afternoon. In the rainy season, the climate is mild and the rain falls frequently but without any flood or destruction resulted therewith. The cold season is the intermediary between the dry and the rainy season. During most part of the year, the country receives the South West wind from the Indian Ocean. This makes the southern part of Siam i.e. the Peninsula , a very pleasant seaside resort because of its situation far out in the Indian Ocean.

Siam is not as industrialized a country as the United States. As a consequence, the suburb of a city is not deprived of its natural beauty and the average people find it a convenient place for relaxation or recreation. Recently, due to increasing facilities in communication such as increasing mileage of highways and reduced fares or return tickets of buses and railways, people begin to take interest in trips to historic places and beach.

Hua Hin, a small community on the east coast of the Peninsula , is the most popular seaside resort of Siam. It used to be an exclusive and discriminating place for wealthy and high class people. A vast change has been made in recent years whereby average people with moderate earning can conveniently spend his holidays there. It is only about 100 miles from Bangkok, the capital and commercial center of Siam, and can be reached by highway, railway, or by sea. The



-MAP OF SIAM-

Scale 1 = 14,250,000

community is self-sufficient in food and water supply. It is flanked on both sides by picturesque mountains and green shrubs and behind it are cultivated lands. A few month ago, the Empress of Britain on its around-the-world cruise stopped several days at Hua Hin. The satisfaction of those American and European tourists with the cool breeze and beautiful scenery of the community is an evidence of its popularity.

SIAMESE BUILDINGS



College of Engineering
Chulalongkorn Univ.



Dept. of State Railway
Bangkok Siam.



College of Arts
Chulalongkorn Univ.



A certain house
Bangkok



Hualamphong Station
Bangkok

CRITICISM OF STATE RAILWAY HOTELS:

The former autocratic government of Siam had attempted to engage in several commercial enterprises such as hotels supervised by the State Railway Department. The purpose was nominally to serve the people beyond public works and public utilities. But the attempt was not very successful. Bad administration as well as lack of attention and zeal on the part of the supervisor contributed to the failure. The old Hua Hin Hotel on the beach of Hua Hin was a typical example.

In the first place, not enough advertisement was made to make the place familiar. Moreover, due to the prejudice of the people against anything attempted by the government, the popularity of the hotel was ever on the wane.

If by chance, a patron should enter the hotel, he was likely to encounter with the following inconveniences:

1. High price; about 13 dollars per day person including three meals (European plan). It should be noted here that the purchasing value of a dollar in Siam is much more than in America the 13 dollars per day is very extremely high even for the wealthy Siamese.
2. Formality, a by-product of the autocratic system of government; the patron found himself subject to list of regulations. Evening dress during dinner was in no way suitable in hot climate especially in a place where people

expected to find relaxation and recreation.

3. Lack of facilities such as barber-shop, beauty-shop, etc.

4. Inconvenience on the part of the guests of the residents.

Those who did not live in the hotel were not permitted to enter the dining hall.

As a result, the hotel was in reality a holiday resort for the excepted few. Royal families and officials of high rank received all the privileges while the majority of the average people were excluded.

CONCLUSION:

Learning to avoid all the incompetency from the old hotel, the proposed building is so planned and equipped as to give maximum convenience and best service to the patrons.

1. Prices are greatly reduced and so set as to suit the financial capacity of the average people. It should be noted that the enterprise is not entirely commercial. It is only an auxiliary of the Railway Department to serve and attract the people. Moreover, prices vary as to location and advantages of rooms.
2. Formality and regulations are reduced to a minimum to facilitate and increase relaxation and enjoyment, without sacrificing the privacy of the residents. If undesirable people shall take advantage of the low price and lack of discrimination, it is the duty of the manager to avoid such public nuisance.
3. Increased facilities for the convenience of the patrons. Barber-shop, beauty-shop, are two of the essential auxiliaries which the patrons can find no better in the community of Hua Hin.
4. Access to outside people to dining-room, bar, etc. in so far as no patron complains of that particular person.
5. Added recreational significance, such as indoor and outdoor games, etc. with minimum extra charge.

6. Ample parking space for motorists and mechanics to take care of automobiles.

ORIGINAL PROGRAM:

The State Railway Department having acquired a piece of land along a beach at Hua Hin in Siam, purposes to erect upon it a small hotel where those in search of healthful summer recreation may find relaxation. Bathing, fishing, hunting tennis, gold^f, are offered as daytime recreation.

Hua Hin is a small community on the peninsula facing the Gulf of Siam on the east, and on the west there are large and small hills where vacationists may hunt. Hua Hin is about 100 miles from Bangkok, and it can be reached by trains, motor vehicles, and boats; most of the people prefer trains.

The property is about rectangle 540 by 800 feet with the shorter dimension fronting the beach which faces east. The main railroad and highway are about a mile and a half from the west border of this property. The ground rises gradually from the beach to the maximum elevation, in the lot, of about 40 feet, but may be filled and graded for added charm as well as utility in the arrangement of architectural composition.

The building is to be of fireproof construction and will contain:

- a. Entrance and lobby
- b. Lounge
- c. Men's and women's rest rooms

- d. Dining room for about 200 people
- e. Kitchen and pantry
- f. Open air terrace, one or more
- g. Single and double rooms and several suites to accomodate 120-150 guests.

Storerroom, small barber-shop, small bar may be so arranged and located on the first floor. Private dining rooms may be located on the second floor, if desired.

REVISED PROGRAM:

The main part of the program remains unchanged, but further consideration and reliable information necessitates the revision of some details to complete the functions of the building.

The building is to be of fireproof construction and contains:

1. Entrance and lobby.
2. Lounge.
3. Men's and women's rest rooms.
4. Dining room for about 200 people.
5. Kitchen and pantry.
6. Open air terrace, one or more.
7. Single and double rooms and several suites to accommodate 120-150 guests.
8. Beauty saloon.
9. Billiard room.
10. Laundry service.
11. A room for large electric fan.
12. Toilets for service men and women.

Storeroom, small barber shop, small bar, may be so arranged and located on the first floor.

SITE:

The lot is close to the sea and is about 1 1/2 miles from the railway station. The main highway runs parallel and close to the railway. A road from the hotel passes through the center of community and joins the main highway near the railway station. It is about 1 mile from the business center from where all kinds of fresh sea foods and vegetable may be obtained at any time. Meat can be brought daily by train from the city 30 miles away. The electric power and water supply are sufficiently available all year round.

-VIEW OF HUA HIN-



Approaching the Summer Palace



Embankment in front of the Palace

VIEW OF HUA HIN



The Dawn at Hua Hin



Old Hotel



Late Afternoon



Beach



, Beach

INFORMATION:

Since not a large percentage of the visitors possesses automobiles, the majority of them takes train. The fare (coach) from Bangkok is about \$3.00. During the hot season, besides the scheduled Southern Express which passes Hua Hin twice a week, there are special trains from Bangkok daily with reduced return tickets. The train takes about 3 hours to reach Hua Hin and an automobile even less. Those from other cities who cannot take privilege of the special train are obliged to pay more for the fare unless they drive in their cars.

TYPE OF BUILDING:

We have seen that climate tends to determine the essential shape of the roof; the inclination of the roof varies in steepness directly to the climate extreme, principally to keep out the wet. This is true to all types of architecture of all parts of the world. Now we have greater advantage in having more materials than those in the past centuries; we have many kinds of roof covering materials which can be laid safely to a slight inclination of about 4° to the horizontal. In many modern buildings, when they are fully analysed, they can be reduced to quite simple units without any addition of cone or pyramid shape on top of the masses. As for this hotel, I decided to design a flat roof type. Its simplicity and unity has been well studied and the right covering material is to be specified to serve the purpose in economic way. I do not see any objection of adopting this type for Siam and I do not think anybody will deny that the simple form is a good form. The simple plan pattern should lead straight to the simple roof pattern; and the roof in its turn will express the plan. A fine building will be finer and more interesting if its plan can be read directly from its mass.

FACADE AND SURROUNDING AREA:

The facade design of this proposed building is adapted from modern architecture developed in Siam. It has a light, airy, and horizontal feeling, expressing spaciousness and ample air circulation essential in the tropic. The side elevations are in conformity with modern style except the north wing where the horizontal bands are stopped by the stair element. The back elevation on the main entrance side is featured by horizontal rows of large windows with simple cornice bands running continuously on top of windows. Those horizontal bands and rows of windows terminate at the vertical glass windows and motif at the main entrance. The windows providing light to the main stairways are decorated with plants and ivies to express comfort and homelike atmosphere within the building.

Branch of from the main road, a driveway, wide enough for two cars and walk, leads the guests to the existing bungalow lot and the hotel area. A row of trees on one side of the drive will then direct any one to the main entrance. On the left side of this drive and just behind the service element in the building is a large parking area for the cars of guests and tourists. About 100 feet from this parking space, a garage with repair shop is located facing the main road. This garage and repair shop under the supervision of the State Railway Department, will provide all kinds of service to both guests

of the hotel and the outside people who come here by automobiles.

SCOPE:

This problem has been approached both from the architectural standpoint and structural principles. The materials to be used should be the better type that can possibly be obtained in the native land. As for the cost of construction, the approximate amount is difficult to determine because the cost of labor and materials varies directly to the distance of transportation; wood, cement, steel from Bangkok, stones and gravels from its locality, sand from a city about 30 miles north, and workmen from Bangkok. Moreover, it is hard to compare to that of this country, for the cost of labor in this country is comparatively higher and the cost of material lower than those in Siam.

ANALYSIS OF THE PROBLEM:

After carefully studied the program it is obvious that the essential requirements are:

1. Good air circulation throughout the building.
2. Ample lounge, viewing sea beach.
3. Dining room and bar with all possible facilities for the enjoyment of guests of the house and outside people.
4. Various shops accessible to both guests of the house and outside people.
5. Bedrooms with private baths.
6. Other possible service.

With all these requirements in mind, different ideas were tried out for shape of plan with essential elements located at proper places for good circulation, and with maximum utilization and maximum exposure. Section and elevation were then tried out for simplicity and unity in form.

GENERAL DESIGN:

After careful consideration, the plan of somewhat L shape is adopted; the angle formed between two straight lines about 140° . The plan has an ample corridor running through the central area from south to north wing. By so doing, the cool southwest wind from the Indian Ocean will displace the warm air inside the building almost all the time. Main lounge is so designed to serve as the concentration of various important functions of the building and is located to get maximum exposure to the sea. Dining room, small bar, men's and women's toilets are grouped together close to the main lounge, and are kept separated by the corridor from the service elements. Various shops and indoor game room are placed together on the other side of the main lounge, and with the corridor keeping them apart from men's and women's lockers and check room. No stairways and elevator shafts are placed on the part of the building facing the beach. Open terrace is carried out in the same shape as the building, and is located between the building and the large open lawn which is inclining toward the beach. All floors, above the first floor, are arranged only for the bedroom units with the corridors running through the lengthwise of the building. I feel that this arrangement is justified with regard to the requirements and purposes.

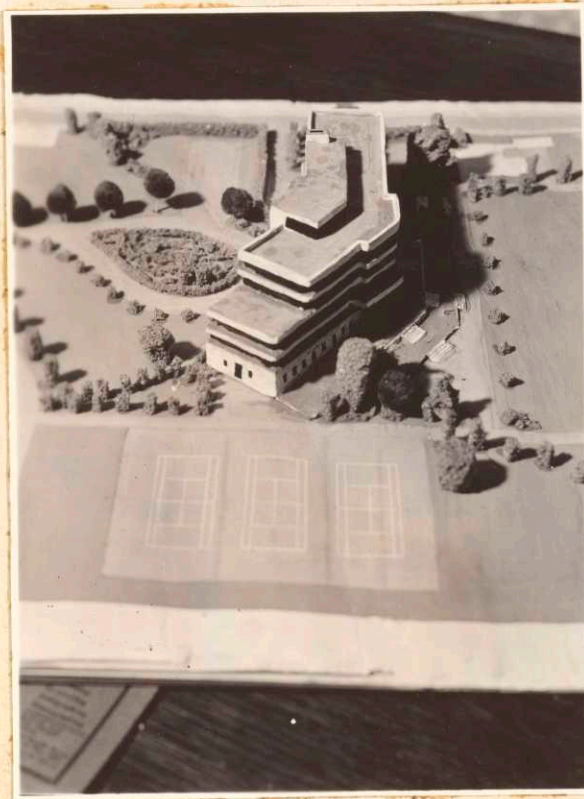
PROPOSED BUILDING



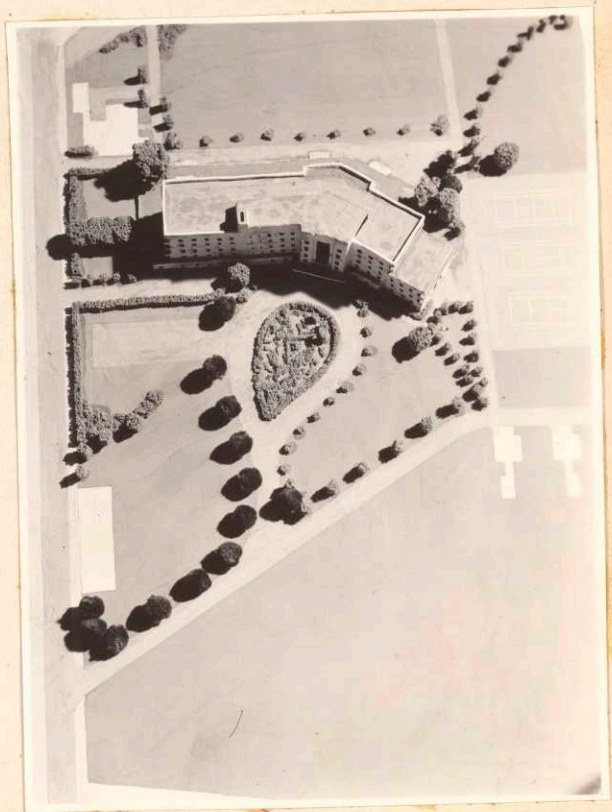
East View



North View



West View



South View

FIRST FLOOR:

On entering the lobby by the main entrance of west side of the building, at both right and left are the main stairs, fire-proofing, leading up to every floor above; with windows arranged to provide sufficient light. These stairs are controlled by the registrar on the left, the service man in the check room on the right. From this arrangement no one can go up main stairs without being seen.

The lobby is ample and convenient for guests to reach main lounge, shops, toilets, and bar easily. The floor of this lobby including the main corridor floor is covered with dark bronⁿ colored tiles meeting the wall by the sanitary bases of lighter brown which relates to the light tan plastered walls above them. The wall surfaces are kept plain and simple without any molding. The ceiling is of cream colored plaster. At center of the lobby, a large modern chromium and glass lighting fixture is fixed flat and close to the ceiling to indicate simplicity inside the building.

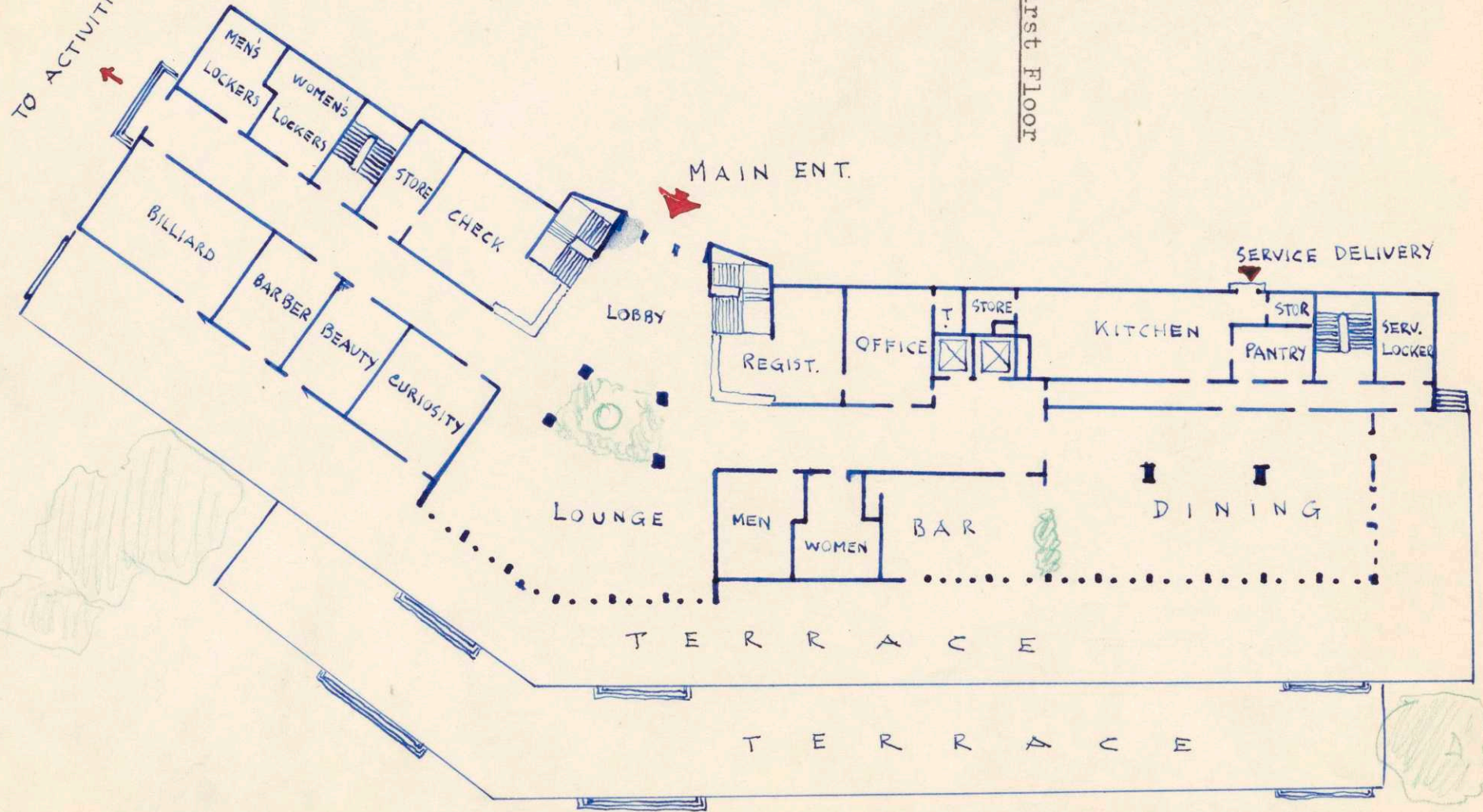
The registrar, cashier, manager, and clerks are grouped together in two rooms close to the main stairway; private toilet is provided. This element also controls mail, vault, switchboard.

Check room, on the opposite side, is large enough to take care of trunks not frequently brought by guest. This

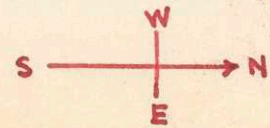
TO ACTIVITIES

First Floor

MAIN ENT.



-25-



service is arranged for the day checking only and closed at night.

Main lounge, two story high, is separated from the lobby by pot plants, palms, and a fountain which are surrounded by four grayish green color, capped by simple molded ornament and with dark green base columns running to the same height as the lounge. This lounge has glass doors and windows opening to the terrace. Mural painted with monochrome light yellow on north and south walls, relating to the greens inside and the surrounding outside, will create a comfortable and appropriate Siamese atmosphere. Hanging drapes, brown with green and red stripes, over light yellow green venetian blinds will make this lounge more effective. Ceiling is of ivory colored plaster of simple molding. From the center of the lounge, hung a large modern chromium lighting fixture providing semi-indirect light to the floor area. The floor is covered with dark green colored tiles met at the wall by the grayish green colored sanitary bases. Part of this lounge may be served as a writing room for the convenience of some guests who desire.

NORTH WING: Adjoining men's and women's toilet rooms are located close to the main lounge. Through the corridor this element can easily be accessible from lounge, lobby, bar, and the dining room. Each room provides 3 fixtures; that is 6

fixtures for both 200 men and women at full capacity of dining room. It provides liberal accommodations for 33 persons per one fixture.

The bar is placed next from the toilets. It opens to the corridor for the convenience of guests and also to the dining room for quick access of waiters and those who dine. It is also connected with the terrace for outside people and for those who want to watch activities on the beach. This bar room is sufficient to accommodate 40 people who can sit either around the bar or at the tables. Small adjoining room close to the bar is provided for cold storage. Behind the bar is located a sink for washing dishes, glasses, and some other accessories used in this room.

The bar itself is, of teak wood and wood veneer, all waxed with darker color, simply decorated with polished chromium bands. The wall surfaces are finished in very pale pink harmonizing with creamy ceiling. Indirect ceiling light must be kept simple. This will bring the great interest to the bar only.

The dining room is located on the extreme north wing of the building. It can be easily reached from the corridor and small elevator hall; this arrangement will provide great convenience to guests of the house from all floors. It also opens to the bar; having pot plants and palms as partition screen. Glass doors open to two sides surrounding terrace

for the outside people and guests who prefer cool atmosphere on fine afternoon and evening. It is served by waiters from the pantry adjoining the kitchen. This dining room itself accommodates 200 people comfortably, guests of the house and outside people as well. Cashier taking care of cash brought by waiters from the guests at the table is placed near the entrance from the corridor. Plain and simple decoration in modern manner is expected in this dining room. The sole aim is to create an informal and comfortable atmosphere for the patrons. The floor is covered with gray colored tiles joining the wall bases of dark blue color. The wall surfaces are done in tinted blue plaster. Two columns in the middle of the room are treated with the same color schemes as the wall and base. Ceiling is finished with the same color as the bar. Hanging lighting fixtures are of the type giving out semi-indirect light.

The small locker room for service men is placed on the extreme north wing, opposite the dining hall. It is arranged for the cooks, waiters, dish washers, etc. who come in for changing their clothes. It also can be served somewhat like a control element on this way.

The service stairs of fire-proofing is placed next to the locker room just mentioned. These stairs runs from the basement up to the fourth floor. This stair way serves only for the service, but in case of emergency, it can be readily

used. It must be arranged so that nobody can enter the stair way without pass key but anybody can get out without using the key. These stairs have sufficiently light throughout on all floors.

The kitchen is located next from the service stairs. Its chimney goes along side the elevator shaft. A small store room is placed close to the stoves for what are to be cooked soon. Another small store room is placed on the opposite side close to the service entrance; this is a cold storage for what are to be kept for next day, and for what cannot be obtained around the community. A pantry is adjoining the cold storage. It is used for keeping kitchenware and dishes immediately to be served. This pantry has two doors to facilitate the service. Kitchen sinks are placed on the west wall close to the pantry. The service entrance is on the west side of the kitchen. Through this entrance, the delivery car reaches from the main road by the drive way, separate from the drive leading to main entrance by trees and bushes. By doing so, the guests of the house and those who are arriving will not see the truck; the delivery will not interfere with other circulations. The kitchen layout was designed to provide maximum speed in preparing and serving.

The elevator shaft is located close to the south wall of the kitchen. Small hall in front of the shaft joins the main corridor leading direct to the dining room and bar. Two

cars are run by the operators at all time during and just after the meal hour. After that only one car will be sufficient for the guests. These elevators will also be served for transporting heavy articles to help service men and maids.

The office for the manager and clerks is placed next from the elevator shaft and on the west side of the main corridor. It has 2 doors opening out, one directly to the corridor for guest who wishes to see the manager personally; another opens to the elevator hall for the service in hotel only. This office controls all services in the hotel. Another room joining this office is arranged for the cashier and registra who control the main stairways.

The service corridor is located between the kitchen and the dining room. The south end of this corridor opens to the elevator hall, just opposite the door opening out from the office; the north end opens to the terrace and is used by employees only. This service corridor and main corridor will divide all service elements from those open for guests of the house.

SOUTH WING: Main corridor runs from the end of the lobby and the main lounge to the end of the south wing having large door way which leads to the tennis courts. On the east side of the corridor, curiosity shop, barber shop, beauty shop, and billiard room, all viewing the beach, are located, and on

its west side are the check room, trunk storage room, stair way, and locker rooms for men and women.

The curiosity shop, adjoining the south wall of the main lounge, opens on one side to the main corridor for the convenience of the guests of the house; the other side, to the open terrace for the outside people. This shop will carry everything for the people in and around this hotel; news papers, cigars, cigarettes, candies, towels, bathing suits, and beach accessories, etc. This will certainly increase more or less the profit for the hotel for, as is the case every summer, there was one or more carts carrying candies and all sorts or beach wears, run by men who came from other towns even from Bangkok. They made some profit out of this kind of selling by strolling along the beach. Besides making more income, this shop will introduce more popularity to the hotel itself for the majority of the natives in this community are fishermen who are not accustomed to such business and consequently people who come to Hua Hin have to purchase modern luxuries from the hotel itself.

The barber shop is next located to the curiosity shop. It opens on one side to the main corridor for guests; the other side, to the open terrace for the outside people. It is equipped with 3 chairs and all other modern sanitary accessories.

The beauty shop is adjoining the barber shop. It

opens to the main corridor and the terrace in the same manner as the barber shop next door. Modern sanitary accessories are well equipped and with 3 chairs individually separated by 7 feet high white screens.

This two shops will provide greater convenience and facilities to the patrons and will bring more income to the hotel, especially during the summer season, for the patrons will find no better shop in this community.

The billiard room is located at the end of the wing. It also opens on one side to the main corridor and on the other to the terrace. Besides billiard table, any other indoor games which require less floor space may be arranged for the enjoyment of guests especially during bad weather.

The locker room for men is located across the corridor, just opposite the billiard room. It is divided into small rooms by a low partition wall. One room is for the lockers of 20 single tier lockers and benches, the other for 3 washing stands, 1 toilet and 1 shower room.

The locker room for women is adjoining the men's. It provides the same facilities as in the men's unit, but more utensils in dressing purposes must be added.

These two rooms serve directly the outdoor games and bathing through the door at the end of the main corridor. The number of the lockers of only 40 provided may be more or less than what the people require, for most of them usually wear

regular street clothes going to play tennis or golf, and some of them prefer to change their clothes in their bedrooms..

Play suits, wet bathing suits, towels, etc. used by guests renting the lockers, will be well taken care of by the laundry service.

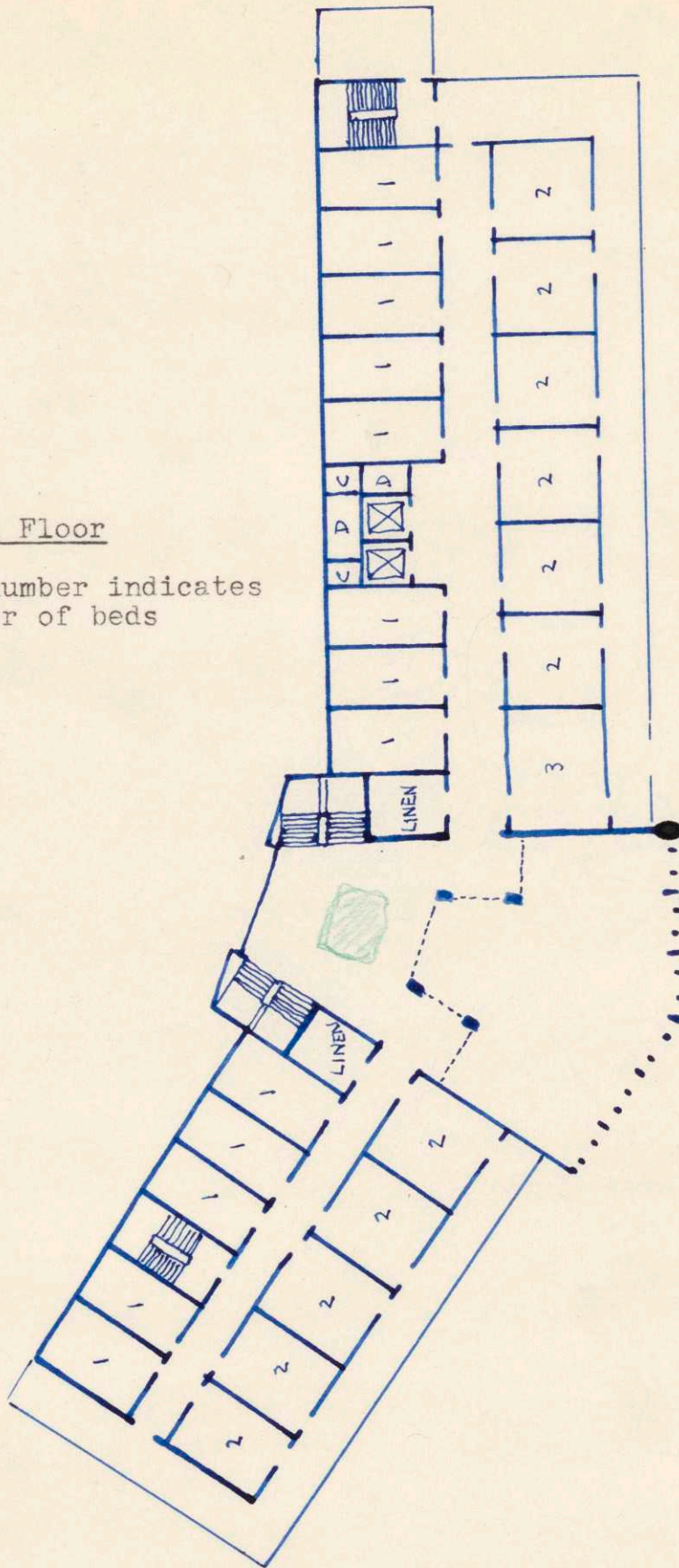
The stairway, located between the women locker room and the storage room, is to be used greatly by guests who wear shorts or bathing suits or those who do not properly dress; the key to every bedroom must be also the pass key to unlock the door to this stairway. It has been noticed that it is very unpleasant to allow guests improperly dressed, to walk up and down or through crowd of regularly dressed people in the hotel. That is why it has to be arranged as mentioned.

This stairway is also constructed with steel and fire-proofing material in the same principle as the service stairway on the north wing. It also runs from the basement up to the fourth floor.

Both stairways on the north and south wings are to be served as fire escape or any emergency by means of electrical device which is controlled at the registration room.

Second Floor

Numerical number indicates
number of beds



SECOND FLOOR:

The second floor is planned to accommodate 37 persons. The bedrooms with private baths are divided into 2 units; the west unit consists of 13 single bedroom rating low, the other 12 twin bedrooms rating higher. These two units are divided by the corridor running from the end of the south wing through the hall of main stairway to the north end. At each end of the corridor is a large window which will remain open at all time, except on windy day or on raining, to let the air circulate freely. From the balcony of the hall of main stairways, the lounge on the first floor can be seen. On the east side of the twin bedroom unit, the 8 feet wide veranda is provided for the comfort of those who pay higher rate. Around this veranda the mosquito screens, made into panels, will be readily put into place to keep out all kinds of bugs and flies during the rainy season; screen will be taken off as soon as the season is over. Area in front of each twin bedroom will be kept separate from the other by pot plants. This arrangement will enable the guest to sit in front of his bedroom during cool night.

Every twin bedroom has 2 doors, one in plywood opens to the corridor; the other in glass with shade opens to the veranda. One glass window somewhat like venetian blind is also provided for each room. On the tops of doors and windows are openings, with mosquito screen, to increase air cir-

ulation throughout the building. Each room has a shower, a toilet, a washing stand, two closets, one full-length mirror on one closet-door, a table with light between beds, a desk with chair, two arm chair, a dresser, a floor electric oscillating fan.

Single bedroom unit is on the west side of the building. Each room has only one plywood door opening to the corridor and one glass window with blind and mosquito roll screen in between. On the tops of doors and windows are the ventilation openings with mosquito screen. Each room provides facilities in the same manner as the twin bedroom, but just for one person.

The two rooms adjoining the main stairways are arranged for the linen closets. Each of them is ample to keep 3 sets of sheets and towels for each of 37 guests on the floor. A sink, a large receptacle for waste papers and the like and other accessories for cleaning are all kept in these closets. The used sheets, towels, etc. will be removed to the basement by the elevator.

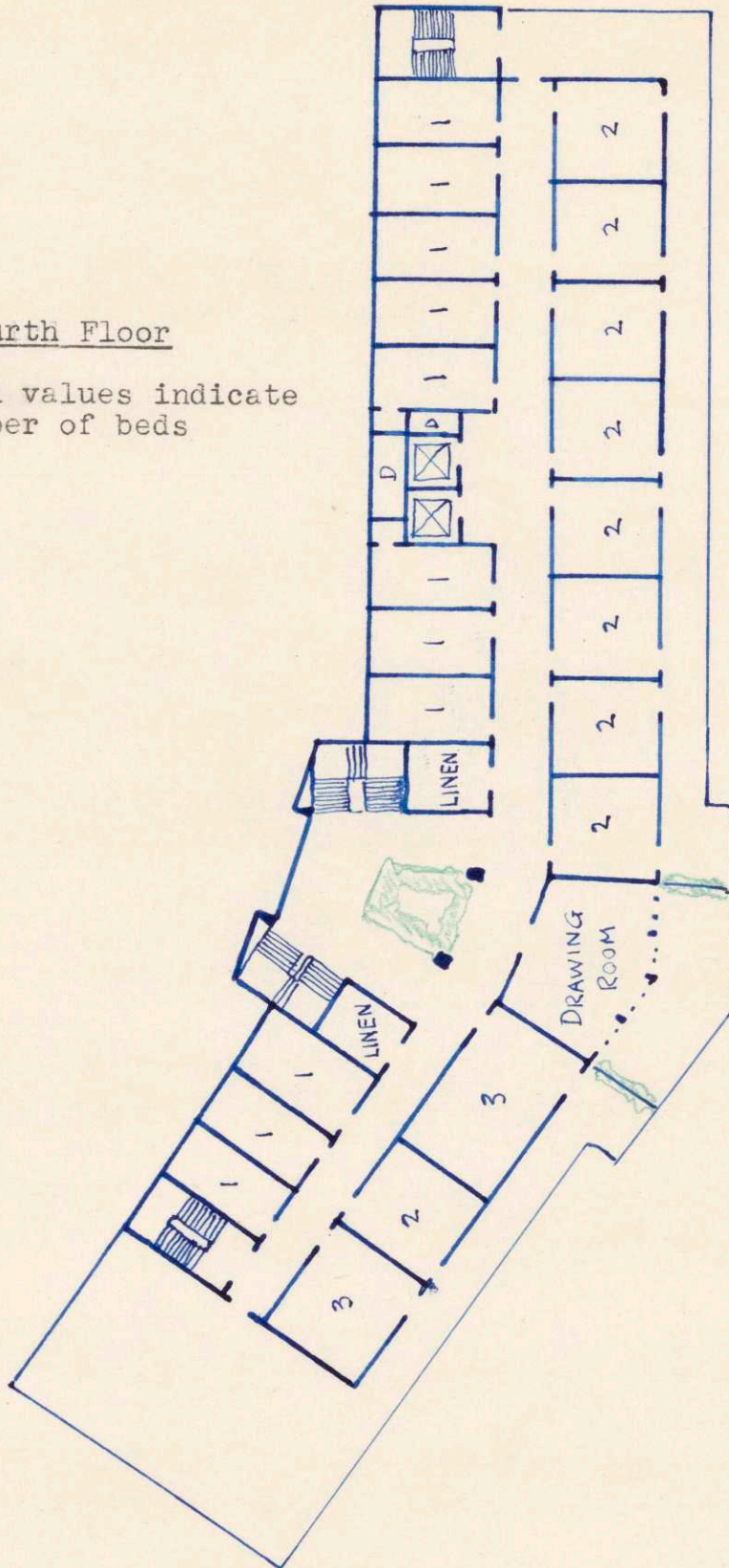
In the hall of main stairways, tropical plants and palms are to be arranged as part of decoration and to provide pleasant atmosphere as well.

THIRD FLOOR:

The third floor is planned to accommodate 40 persons; 13 single bedrooms, 12 twin bedrooms and 1 suit of 3 beds. Every detail arrangement and facility is provided in the same manner as those on the second floor, except that a large drawing room located just above the main lounge is arranged for the visitors of the guests. It can also be served as a lounge for guests on this floor.

Fourth Floor

Numerical values indicate
number of beds



FOURTH FLOOR:

The fourth floor is planned with accommodation for 35 persons; 11 single bedrooms, 9 twin bedrooms, and 2 suites of 3 beds. Accessories and equipments in the bedroom are arranged to provide every possible convenience for the guests exactly in the same manner as the third floor. Since the mass of the south wing sets back 3 bays, a small open space above the third floor is to be arranged as a terrace which will serve as relaxing place for some guests on this floor during silent and warm night, thus saving the trouble of coming down to the terrace of the first floor. This terrace must be arranged with plants, palms, and a few garden chairs.

FIFTH FLOOR:

This floor is to accommodate 35 persons; 11 single bedrooms, 9 twin bedroom, and 2 suites of 3 beds. All detail arrangements, facilities, and services are provided the same as those on the fourth floor, with the exception that there is no terrace on the south wing.

It is noted here that every bedroom or suite on all floors is provided with intercommunication wall telephone. The telephone should be fixed at suitable place where it is out of way but can be easily seen. All these telephones are controlled by the switch board placed in the registration room.

ROOF:

The main stairways, as well as the elevators, extend to the roof. The use of the roof is arranged for the possibility of future development for somewhat like penthouse. Toilet facilities for both men and women are located close to the hall of main stairways. Ample space for refreshment and storage is arranged close to the elevators on the north wing. A pergola provides partial shelter over part of the area, while the permanent shelter is the flat roof under which is the ample space which will be able to handle the guests in case of sudden showers.

BASEMENT:

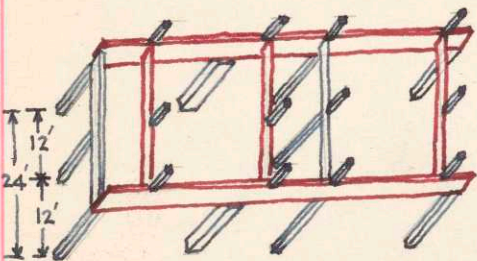
On the basement floor, which can be reached by the north and south wing stairways, and passenger elevators, is arranged for the service, including laundry, store rooms for tables, chairs, wire screens, etc. as well as small repair shop, a room for large electric fan, and toilets for service men and maids. All these do not need much light like the other elements and consequently it can be placed where light is insufficient.

TERRACE:

An outdoor character in front of the building is achieved by the use of large terrace fronting the beach which faces east. Refreshments can be easily served from the pantry which is adjoining the kitchen while drinks come directly from the bar. Besides its service as part of the dining room, it can be used equally well as a quiet relaxing place during warm silent nights. Tropical plants and palms further help to decorate the terrace. It is very convenient for the guests to reach the terrace from either shop in the building, from the main lounge, bar, or from the beach and main road outside the lot through sidewalk.

CONSTRUCTION:

The entire building is to be constructed of fireproofing reinforced concrete with hollow clay[?] tile stucco finished on all wall surfaces. Plate girder beam of about 40 inch[?] deep have to be used across the building, on short dimension side about 24 feet center to center, to support the set back of the walls and columns on the second floor and floors above.



ISOMETRIC

Red lines indicate plate girder

Reinforced concrete beams must be of a great depth to stand the shearing force.

The entire exterior walls are to be 10 inch thick filled with rock wool or the like to retard the direct heat transmission. The interior walls along the corridor also are to be 10 inch thick allowing enough space for the ducts which lead the wind current operated by the electric fan on basement to every floor on any warm silent days; this will be a great help to increase the speed of air circulation. All other partition walls will be 4 and 6 inch thick.

To keep the construction as simple as possible, the columns along the lengthwise of the building are spaced 12 feet on centers; this will reduce more or less the cost of reinforcing steel bars imported.

Rib slab reinforced concrete floors of 4 inch thick with attached ceilings are maintained by the reinforced concrete beams, of about 20 inch deep, resting on tops of columns and forming the gridiron pattern. Floors are covered with tiles set on cement mortar which binds them to concrete floor, with the exception that floors exposing to the weather and having any room on floor above must be covered with waterproofing material before laying tiles in place.

All reinforced concrete columns are to be 10 inch square capable of carrying both dead and live load on all floors. These columns will transmit load down on to the concrete foundations supported by wood piles running deep to the bed rocks; it must be noted that if any part of the ground consists of quicksand pit, the wood piles must be driven butt down. Basement floors and walls up to first floor are all of reinforced concrete to insure the protection against the flood during rainy season. Any part of the building and pipe lines leading up to the first floor must be equipped with the device that keep the termites from building their tunnels into the building. And the soil 2 feet from and around the building must be treated with chemical powder.

All 4 stairways are to be of steel with fireproofing construction. In case of fire, the stairs must not be cut off by fire, it must stay without any part of them falling down.

The plumbing, concentrated under the first floor, is

divided into 3 sections, one for water from the main supply, one for the waste water which can be led direct to dry pit, another one for water from toilets led direct to the septic tank which is the usual method being used in Siam.

All wood members used on the exterior and the interior, except the movable furnitures, must be treated or painted with fire-retarding chemical solution or paint. By treating the wood in this manner, it will insure that the building is completely on the safe side; I am not sure that there is a modern fire engine in this community.

All materials to be used in construction of this proposed building are available in Siam, except beam girders, reinforcing steel bars, steel stair structures, wrought iron pipes, glass for doors and windows and some of the hardwares must be imported from foreign countries.

SERVICE QUARTERS:

The manager, clerks, waiters, cooks, dish washers, shop girls, laundry men, cleaning girls, etc. are arranged to stay in group and single in houses on a nearby reserved lot which is also owned and supervised by the State Railway Department.

-BIBLIOGRAPHIES-

- Arch. Graphic Standards
by C.G. Ramsey and H.R. Sleeper
- Handbook of Fireproof Const.
by Concrete Engineering Co.
- Wood Handbook
prep. by The Forest Product Laboratory
- Data Sheets
by Don Graf
- Dahlstrom Elevator
- Arch. Forum, August 1936
Cost Techniques
- Arch. Forum, September 1936
Apt. Hotel by M.L. Hampton
- American Arch., November 1936
Modern plans without pictures by R.B. Eaton
- American Arch., September 1937
Public Toilet by J.R. Von Sternberg
- American Arch., January 1937
Concrete by T.H. Smith-Miller.
- American Arch., June 1936
Better const. in wood by H.V. Walsh
- American Arch., November 1937
Hotel Bedrooms and baths by J.R. Von Sternberg
- American Arch., February 1937
Stairways by R.B. Eaton
- American Arch., May 1937
Bathrooms by G.K. Geerlings