

MIT Open Access Articles

Point Absorber Limits to Future Gravitational-Wave Detectors

The MIT Faculty has made this article openly available. **Please share** how this access benefits you. Your story matters.

Citation: Mavalvala, Nergis. 2021. "Point Absorber Limits to Future Gravitational-Wave Detectors." *Physical Review Letters*, 127 (24).

Published Version: 10.1103/PHYSREVLETT.127.241102

Publisher: American Physical Society (APS)

Permanent Link: <https://hdl.handle.net/1721.1/142160>

Version: Final published version: final published article, as it appeared in a journal, conference proceedings, or other formally published context

Terms of use: Article is made available in accordance with the publisher's policy and may be subject to US copyright law. Please refer to the publisher's site for terms of use.



Point Absorber Limits to Future Gravitational-Wave Detectors

Wenxuan Jia^{1,*}, Hiroaki Yamamoto², Kevin Kuns¹, Anamaria Effler³, Matthew Evans¹, Peter Fritschel¹, R. Abbott,² C. Adams,³ R. X. Adhikari,² A. Ananyeva,² S. Appert,² K. Arai,² J. S. Areeda,⁴ Y. Asali,⁵ S. M. Aston,³ C. Austin,⁶ A. M. Baer,⁷ M. Ball,⁸ S. W. Ballmer,⁹ S. Banagiri,¹⁰ D. Barker,¹¹ L. Barsotti,¹ J. Bartlett,¹¹ B. K. Berger,¹² J. Betzwieser,³ D. Bhattacharjee,¹³ G. Billingsley,² S. Biscans,^{1,2} C. D. Blair,³ R. M. Blair,¹¹ N. Bode,^{14,15} P. Booker,^{14,15} R. Bork,² A. Bramley,³ A. F. Brooks,² D. D. Brown,¹⁶ A. Buikema,¹ C. Cahillane,² K. C. Cannon,¹⁷ X. Chen,¹⁸ A. A. Ciobanu,¹⁶ F. Clara,¹¹ C. M. Compton,¹¹ S. J. Cooper,¹⁹ K. R. Corley,⁵ S. T. Countryman,⁵ P. B. Covas,²⁰ D. C. Coyne,² L. E. H. Datrier,²¹ D. Davis,⁹ C. Di Fronzo,¹⁹ K. L. Dooley,^{22,23} J. C. Driggers,¹¹ P. Dupej,²¹ S. E. Dwyer,¹¹ T. Etzel,² T. M. Evans,³ J. Feicht,² A. Fernandez-Galiana,¹ V. V. Frolov,³ P. Fulda,²⁴ M. Fyffe,³ J. A. Giaime,^{6,3} K. D. Giardino,³ P. Godwin,²⁵ E. Goetz,^{6,13,26} S. Gras,¹ C. Gray,¹¹ R. Gray,²¹ A. C. Green,²⁴ E. K. Gustafson,² R. Gustafson,²⁷ E. D. Hall,¹ J. Hanks,¹¹ J. Hanson,³ T. Hardwick,⁶ R. K. Hasskew,³ M. C. Heintze,³ A. F. Hellmich-Cornell,⁸ N. A. Holland,²⁸ J. D. Jones,¹¹ S. Kandhasamy,²⁹ S. Karki,⁸ M. Kasprzak,² K. Kawabe,¹¹ N. Kijbunchoo,²⁸ P. J. King,¹¹ J. S. Kissel,¹¹ Rahul Kumar,¹¹ M. Landry,¹¹ B. B. Lane,¹ B. Lantz,¹² M. Laxen,³ Y. K. Lecoeuche,¹¹ J. Leviton,²⁷ J. Liu,^{14,15} M. Lormand,³ A. P. Lundgren,³⁰ R. Macas,²² M. MacInnis,¹ D. M. Macleod,²² G. L. Mansell,^{11,1} S. Márka,⁵ Z. Márka,⁵ D. V. Martynov,¹⁹ K. Mason,¹ T. J. Massinger,¹ F. Matichard,^{2,1} N. Mavalvala,¹ R. McCarthy,¹¹ D. E. McClelland,²⁸ S. McCormick,³ L. McCuller,¹ J. McIver,^{2,26} T. McRae,²⁸ G. Mendell,¹¹ K. Merfeld,⁸ E. L. Merilh,¹¹ F. Meylahn,^{14,15} T. Mistry,³¹ R. Mittleman,¹ G. Moreno,¹¹ C. M. Mow-Lowry,¹⁹ S. Mozzon,³⁰ A. Mullavey,³ T. J. N. Nelson,³ P. Nguyen,⁸ L. K. Nuttall,³⁰ J. Oberling,¹¹ Richard J. Oram,³ C. Osthelder,² D. J. Ottaway,¹⁶ H. Overmier,³ J. R. Palamos,⁸ W. Parker,^{3,32} E. Payne,³³ A. Pele,³ R. Penhorwood,²⁷ C. J. Perez,¹¹ M. Pirello,¹¹ H. Radkins,¹¹ K. E. Ramirez,³⁴ J. W. Richardson,² K. Riles,²⁷ N. A. Robertson,^{2,21} J. G. Rollins,² C. L. Romel,¹¹ J. H. Romie,³ M. P. Ross,³⁵ K. Ryan,¹¹ T. Sadecki,¹¹ E. J. Sanchez,² L. E. Sanchez,² T. R. Saravanan,²⁹ R. L. Savage,¹¹ D. Schaetzl,² R. Schnabel,³⁶ R. M. S. Schofield,⁸ E. Schwartz,³ D. Sellers,³ T. Shaffer,¹¹ D. Sigg,¹¹ B. J. J. Slagmolen,²⁸ J. R. Smith,⁴ S. Soni,⁶ B. Sorazu,²¹ A. P. Spencer,²¹ K. A. Strain,²¹ L. Sun,² M. J. Szczepańczyk,²⁴ M. Thomas,³ P. Thomas,¹¹ K. A. Thorne,³ K. Toland,²¹ C. I. Torrie,² G. Traylor,³ M. Tse,¹ A. L. Urban,⁶ G. Vajente,² G. Valdes,⁶ D. C. Vander-Hyde,⁹ P. J. Veitch,¹⁶ K. Venkateswara,³⁵ G. Venugopalan,² A. D. Viets,³⁷ T. Vo,⁹ C. Vorvick,¹¹ M. Wade,³⁸ R. L. Ward,²⁸ J. Warner,¹¹ B. Weaver,¹¹ R. Weiss,¹ C. Whittle,¹ B. Willke,^{15,14} C. C. Wipf,² L. Xiao,² Hang Yu,¹ Haocun Yu,¹ L. Zhang,² M. E. Zucker,^{1,2} and J. Zweizig²

¹LIGO, Massachusetts Institute of Technology, Cambridge, Massachusetts 02139, USA

²LIGO, California Institute of Technology, Pasadena, California 91125, USA

³LIGO Livingston Observatory, Livingston, Louisiana 70754, USA

⁴California State University Fullerton, Fullerton, California 92831, USA

⁵Columbia University, New York, New York 10027, USA

⁶Louisiana State University, Baton Rouge, Louisiana 70803, USA

⁷Christopher Newport University, Newport News, Virginia 23606, USA

⁸University of Oregon, Eugene, Oregon 97403, USA

⁹Syracuse University, Syracuse, New York 13244, USA

¹⁰University of Minnesota, Minneapolis, Minnesota 55455, USA

¹¹LIGO Hanford Observatory, Richland, Washington 99352, USA

¹²Stanford University, Stanford, California 94305, USA

¹³Missouri University of Science and Technology, Rolla, Missouri 65409, USA

¹⁴Max Planck Institute for Gravitational Physics (Albert Einstein Institute), D-30167 Hannover, Germany

¹⁵Leibniz Universität Hannover, D-30167 Hannover, Germany

¹⁶OzGrav, University of Adelaide, Adelaide, South Australia 5005, Australia

¹⁷RESCEU, University of Tokyo, Tokyo 113-0033, Japan

¹⁸OzGrav, University of Western Australia, Crawley, Western Australia 6009, Australia

¹⁹University of Birmingham, Birmingham B15 2TT, United Kingdom

²⁰Universitat de les Illes Balears, IAC3—IEEC, E-07122 Palma de Mallorca, Spain

²¹SUPA, University of Glasgow, Glasgow G12 8QQ, United Kingdom

²²Cardiff University, Cardiff CF24 3AA, United Kingdom

²³The University of Mississippi, University, Mississippi 38677, USA

²⁴University of Florida, Gainesville, Florida 32611, USA

²⁵The Pennsylvania State University, University Park, Pennsylvania 16802, USA

²⁶University of British Columbia, Vancouver, British Columbia V6T 1Z4, Canada

²⁷University of Michigan, Ann Arbor, Michigan 48109, USA

- ²⁸*OzGrav, Australian National University, Canberra, Australian Capital Territory 0200, Australia*
²⁹*Inter-University Centre for Astronomy and Astrophysics, Pune 411007, India*
³⁰*University of Portsmouth, Portsmouth PO1 3FX, United Kingdom*
³¹*The University of Sheffield, Sheffield S10 2TN, United Kingdom*
³²*Southern University and A&M College, Baton Rouge, Louisiana 70813, USA*
³³*OzGrav, School of Physics & Astronomy, Monash University, Clayton 3800, Victoria, Australia*
³⁴*The University of Texas Rio Grande Valley, Brownsville, Texas 78520, USA*
³⁵*University of Washington, Seattle, Washington 98195, USA*
³⁶*Universität Hamburg, D-22761 Hamburg, Germany*
³⁷*Concordia University Wisconsin, 2800 North Lake Shore Drive, Mequon, Wisconsin 53097, USA*
³⁸*Kenyon College, Gambier, Ohio 43022, USA*



(Received 22 September 2021; accepted 27 October 2021; published 7 December 2021)

High-quality optical resonant cavities require low optical loss, typically on the scale of parts per million. However, unintended micron-scale contaminants on the resonator mirrors that absorb the light circulating in the cavity can deform the surface thermoelastically and thus increase losses by scattering light out of the resonant mode. The point absorber effect is a limiting factor in some high-power cavity experiments, for example, the Advanced LIGO gravitational-wave detector. In this Letter, we present a general approach to the point absorber effect from first principles and simulate its contribution to the increased scattering. The achievable circulating power in current and future gravitational-wave detectors is calculated statistically given different point absorber configurations. Our formulation is further confirmed experimentally in comparison with the scattered power in the arm cavity of Advanced LIGO measured by *in situ* photodiodes. The understanding presented here provides an important tool in the global effort to design future gravitational-wave detectors that support high optical power and thus reduce quantum noise.

DOI: [10.1103/PhysRevLett.127.241102](https://doi.org/10.1103/PhysRevLett.127.241102)

Introduction.—A wide variety of precision optical experiments rely on resonant optical cavities to enable precise measurements of space, time, and fundamental physics. These experiments often require high optical intensity incidents on the mirrors of the cavity to boost the signal-to-noise ratio. However, unintended defects may be deposited on the reflective surface of the mirror during the coating process or exposure to a dusty environment [1]. These localized defects, known as “point absorbers,” absorb optical power and cause undesired thermal effects on the optics under irradiation, especially in cavities containing high circulating power. The point absorber becomes a limiting factor in various precision measurement experiments that require a high-finesse cavity with low round-trip loss, such as cavity QED [2], axion detection [3], qubit experiments [4], and gravitational-wave detectors [5–7]. It is thus necessary to develop a quantitative understanding of the point absorber effect in high-power optical cavities.

With a 4-km-long baseline and a circulating power of more than 200 kW, the arm cavity of the Advanced Laser Interferometer Gravitational-Wave Observatory (aLIGO) serves as a good example of the point absorber effect [8]. aLIGO is a dual-recycled Fabry-Perot Michelson interferometer designed to measure tiny perturbations of spacetime with unprecedented precision [9]. One of the fundamental noises that limit aLIGO’s performance is quantum shot noise, which can be reduced either by increasing the arm power or by manipulating the quantum states of light

through squeezing [10]. However, arm power can be limited by point absorbers (studied here), other thermal distortions [11], and a variety of instabilities [12–15]. The arm power during the third observing run O3 was limited to one-third of the designed value of 750 kW, mainly due to point absorbers on the mirror [8,9] that scatter light out of the fundamental cavity mode.

Point absorbers were known to exist since the first observing run. Many analyses have been carried out to understand how they deform the optics and scatter light out of the cavity [1,16,17]. In this Letter, we provide a more general approach from first principles. The traditional formalism is extended to include arbitrary heating functions with any nonlinear boundary conditions, such as the Stefan-Boltzmann law. With the correction from the nonlinear boundary condition, we can make more accurate statistical estimations of the arm power for the next planned upgrade of aLIGO (known as “A+”) and the next generation of gravitational-wave detectors with a variety of potential point absorber configurations.

We start by calculating the differential temperature profile from single point absorber heating with proper boundary conditions. Then the thermoelastic deformation of the mirror is derived using a thermoelasticity equation. Next, this deformation is incorporated in a FFT-based simulation to obtain the field in the arm cavity, which is used to calculate its round-trip loss and achievable power. In addition, we simulate the low-angle scattered light

intensity and compare this with *in situ* measurements. Our results reveal a good match between these measurements and simulation, thus confirming our understanding of point absorbers.

Theoretical modeling.—Point absorbers degrade the performance of high-power optical resonators by absorbing laser power, which thermally distorts the mirror surface and thereby scatters light out of the resonant mode of the cavity. The analytical solution of the differential temperature under a general boundary condition is derived first.

Consider a cylindrical optic with radius a and thickness h . Choose cylindrical coordinates at the center of the mirror with the z direction pointing into the cavity. One point absorber is put at the center of the high-reflective (HR) side for cylindrical symmetry. When the cavity is held on resonance, the system is static, and the heat equation reduces to the Laplace equation

$$\nabla^2 T_{\text{sub}}(r, z) = \nabla^2 T(r, z) = 0, \quad (1)$$

where $T_{\text{sub}}(r, z) = T(r, z) + T_{\infty}$ is the temperature of the optic substrate, and T is the temperature departure from the constant ambient temperature T_{∞} . The boundary conditions include the intensity of a heating source $I(r)$ on the HR surface due to the point absorber,

$$-K \left. \frac{\partial T}{\partial z} \right|_{z=\frac{h}{2}} = -I(r) + g(T)|_{z=\frac{h}{2}}, \quad (2)$$

where K is the thermal conductivity, $g(T)$ is the thermal flux of blackbody radiation

$$g(T) = \epsilon \sigma [(T_{\infty} + T(r, z))^4 - T_{\infty}^4], \quad (3)$$

ϵ is the thermal emissivity or absorptivity (assumed to be unity throughout this Letter), and σ is the Stefan-Boltzmann constant.

A semi-infinite assumption can be made by treating the optic as a semi-infinite solid [18,19]. We present a general way of solving the Laplace equation under either linearized or nonlinear boundary conditions. Taking the zeroth-order Hankel transform \mathcal{H}_0 of the Laplace equation in cylindrical coordinates with respect to r [20], we get

$$(-k^2 + \partial_z^2) \tilde{T}(k, z) = 0, \quad (4)$$

where the Hankel transform \mathcal{H}_0 is defined as

$$\tilde{T}(k, z) = \mathcal{H}_0\{T(r, z)\} \equiv \int_0^{\infty} dr r J_0(kr) T(r, z) \quad (5)$$

and J_0 is the Bessel function of the first kind. The angular dependence is dropped due to cylindrical symmetry. The solution of Eq. (4) is the sum of growth modes $A(k)e^{kz}$ and decay modes $B(k)e^{-kz}$, where the latter

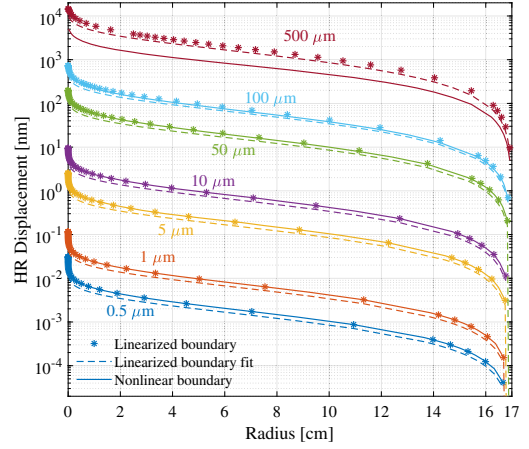


FIG. 1. Thermoelastic displacements on the HR surface by various point absorber radii (labeled near each curve). The edge of the 17-cm radius optic has zero deformation. The incident intensity on the centered absorber is 4.1×10^7 W/m², equivalent to the center intensity of the 240-kW beam on the mirror of aLIGO arm cavity. Analytic fits to the linearized boundary solution [Eq. (12)] are also shown.

vanishes by the semi-infinite boundary conditions $T(r \rightarrow \infty, z) = T(r, z \rightarrow -\infty) = 0$.

Let $I(r)$ be the heating function from a point absorber; here we use a Gaussian profile $I(r) = \epsilon I_b e^{-r^2/w^2}$ with absorber radius w and irradiation intensity I_b at the absorber center. Let $T_{\text{HR}}(r) = T(r, z = h/2)$ be the temperature profile at the HR surface. The Hankel transform of the boundary condition at the HR surface (2) gives

$$\tilde{T}(k, z) = -\frac{e^{k(z-h/2)}}{Kk} \mathcal{H}_0\{-I(r) + g[T_{\text{HR}}(r)]\}. \quad (6)$$

Therefore, $T_{\text{HR}}(r)$ is found by taking the inverse transform of $\tilde{T}(k, z = h/2)$,

$$T_{\text{HR}}(r) = \frac{2}{\pi K} \int_0^r dr' \frac{r'}{r} [I(r') - g(T_{\text{HR}}(r'))] \mathcal{K}\left(\frac{r'^2}{r^2}\right) + \frac{2}{\pi K} \int_r^{\infty} dr' [I(r') - g(T_{\text{HR}}(r'))] \mathcal{K}\left(\frac{r^2}{r'^2}\right), \quad (7)$$

where \mathcal{K} is the complete elliptic integral of the first kind. Equation (7) is a nonlinear integral equation with no closed-form solution, but an approximate solution can be found by either linearizing the boundary function $g(T)$ or using successive approximation.

The linearized boundary solution has been given in [19]. The heat from a small point absorber is primarily dissipated by conduction. This estimate breaks down for a large absorber of radius $(K/\epsilon I_b)(I_b/2\sigma)^{1/4}$ which is ~ 100 μm in an aLIGO arm cavity [17]. The correction of nonlinear radiation will matter if the radiative contribution becomes

significant. This motivates us to find a solution to the general boundary condition.

The nonlinear integral equation (7) can be solved by successive approximation with feedback. We start the zeroth iteration with an initial guess $T_0(r)$. The real solution is denoted as $T_S(r)$, and the zeroth error function is $\varepsilon_0(r) = T_0(r) - T_S(r)$. Plugging this into Eq. (7) and keeping the first nontrivial order of the error,

$$g_0(r) \equiv g[T_0(r)] = g_S(r) + 4\varepsilon\sigma(T_\infty + T_0)^3\varepsilon_0 + \mathcal{O}(\varepsilon^2). \quad (8)$$

Assuming the error has weak variation over radius $\varepsilon_0(r) \approx \varepsilon_0$, we have

$$T[T_0(r)] = T_S(r) - \varepsilon_0 C_0(r) = T_S(r) - [T_0(r) - T_S(r)]C_0(r), \quad (9)$$

where

$$C_0(r) = \frac{8\varepsilon\sigma}{\pi K} \left[\int_0^r dr' \frac{r'}{r} (T_\infty + T_0)^3 \mathcal{K}\left(\frac{r'^2}{r^2}\right) + \int_r^\infty dr' (T_\infty + T_0)^3 \mathcal{K}\left(\frac{r^2}{r'^2}\right) \right]. \quad (10)$$

We can then iterate the temperature profile

$$T_{i+1} = \frac{T(T_i) + C_i T_i}{1 + C_i} \quad (11)$$

until we reach convergence at $T(T_i) = T_i$ and $T_{i+1} = T_i$ [21,22].

The displacement vector field of the optic can be found given the temperature solution $T(r, z)$. We follow Hello and Vinet's formalism but apply it to our solution [23] (see the Supplemental Material for detailed derivations [24]). Figure 1 shows the resulting displacement of the HR surface. For small point absorbers, the differential temperature is relatively low, and the radiative correction is negligible; the linearized boundary solution is accurate. However, the correction becomes significant for an absorber with radius larger than $100 \mu\text{m}$, up to a factor of 3 in the $500 \mu\text{m}$ case. A typical point absorber with a few tens of microns in radius can cause surface deformation on the scale of several tens of nanometers in height and a few centimeters in size.

An analytical fit to displacement of the linearized solution is given by

$$h(r) \approx 0.12 \left(\frac{3\lambda + 2\mu}{\lambda + \mu} \right) \frac{\varepsilon I_b w^2 \alpha}{K} \ln \left(\frac{a^2}{r^2 \left(1 - \frac{w^2}{a^2} \right) + w^2} \right), \quad (12)$$

where μ is the first Lamé coefficient, λ is the second Lamé coefficient, and α is the thermal expansion coefficient.

Note that Eq. (12) breaks down at high absorbed power, as shown in Fig. 1. With the deformation known, we can superpose it onto the mirror phase map data and simulate fields in a static cavity.

Implications for gravitational-wave detectors.—Advanced gravitational-wave detectors are Michelson interferometers using Fabry-Perot cavities as arms to increase optical power and thus the signal produced by gravitational-wave strain. The arm power is further increased by the addition of a mirror at the symmetric port of the interferometer to form a power recycling cavity [5]. However, the power buildup can be degraded by the point absorber effect as follows.

Without any thermoelastic deformation, the round-trip loss in the cavity is constant, and the arm power is linearly proportional to the input power with the slope set by the round-trip loss of the cold cavity (gray lines in Fig. 2). However, the thermoelastic deformation from the point absorbers contributes to the optical loss by scattering light out of the fundamental cavity mode. Thus, an increase in arm power leads to an increase in the optical loss of the arm, which decreases the optical gain of the power recycling cavity [1]. As a result, for sufficiently high-power levels, the arm power saturates and becomes largely independent of the input power.

Understanding the limitations of point absorbers on the achievable arm power in realistic situations with multiple absorbers is important in planning future detectors—for example, the next-generation gravitational-wave detector Cosmic Explorer (CE) [25,26]. CE will achieve a factor of 10 increase in sensitivity relative to A+ by scaling up the A+ design to use 40-km-long arm cavities and increasing the arm power by a factor of 2. The key parameters of the coupled arm cavities of both detectors are summarized in Table I.

To investigate the achievable arm power in CE and the upcoming A+ observing runs, we conducted a Monte Carlo statistical analysis of round-trip loss by calculating fields under 1000 point absorber maps generated on the arm cavity mirrors. For each map, the absorber locations are uniformly distributed; radii are governed by a Rayleigh distribution, and numbers are governed by a Poisson distribution with mean number density one per 60 cm^2 , characteristic of coated aLIGO mirrors. We investigate the cases of mean absorber radius $\langle w \rangle = 5 \mu\text{m}$ (optimistic) and larger absorbers with $\langle w \rangle = 12 \mu\text{m}$ (pessimistic). The FFT-based simulation package Stationary Interferometer Simulation [27] is used to calculate the field amplitudes in the cavity given these point absorber maps. The round-trip loss for each map is calculated at several arm powers from which the power recycling gain is computed. The recycling gain is then converted to the input power required to reach a given arm power.

Figure 2 shows the results for these two cases for both the A+ and CE arm cavities. The medians are shown as

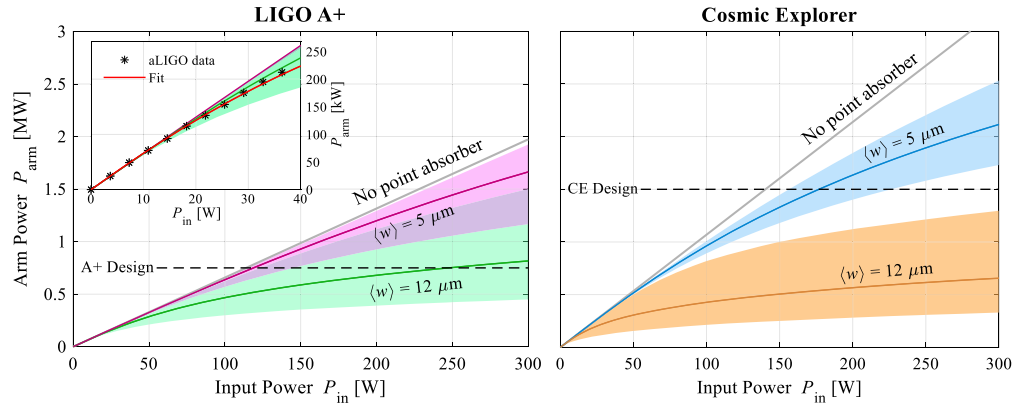


FIG. 2. Circulating power in the arm cavity versus input power for two different detectors and mean radii of point absorbers (optimistic $5 \mu\text{m}$ and pessimistic $12 \mu\text{m}$). The solid line is the median with shadings corresponding to the 16th and 84th percentile. The gray lines (no absorber case) increases linearly with the initial slopes set by the round-trip loss of the cold cavity (Table I), and the designed power is 750 kW for A+ and 1.5 MW for CE. In the absence of point absorbers, the required input power is 120 W for A+ and 140 W for CE. In the enlarged graph, the data points collected from LIGO Livingston Observatory throughout observing run O3b are fit to obtain the radii of point absorbers. It is statistically more confident for A+ to achieve the designed power with $\langle w \rangle = 5 \mu\text{m}$.

solid lines and the shadings correspond to the 16th and 84th percentile. The arm power saturation is evident in the $\langle w \rangle = 12 \mu\text{m}$ case and, while it may be possible for A+ to reach its 750-kW design arm power, it is unlikely that CE would ever reach its design of 1.5 MW with absorbers of this size. On the other hand, our analysis suggests that point absorbers with $\langle w \rangle = 5 \mu\text{m}$ pose little risk of damaging the A+ arm power, but it requires on average 30% more input power for CE to achieve the designed goal. In both cases, the point absorbers limit the arm power of CE more significantly than that of A+.

This statistical model is consistent with measured arm powers in the LIGO Livingston Observatory during

TABLE I. Parameters of the Y arm cavity of LIGO Livingston Observatory measured in observing run O3b and the proposed Cosmic Explorer. Note that, with the exception of the optical gain and round-trip loss, the A+ design parameters are the same as those of aLIGO.

Parameter	aLIGO	CE
Designed arm power	750 kW	1.5 MW
Optical gain of		
Power recycling cavity	40	76
Arm cavity	270	280
Round-trip loss of		
Power recycling cavity	500 ppm	500 ppm
Cold arm (no absorber)	66 ppm	40 ppm
Arm cavity length	3995 m	40 km
Mirror		
Aperture	34 cm	70 cm
Material	Fused silica	Fused silica
Temperature	290 K	290 K
Beam radius on		
Input mirror	5.2 cm	12 cm
End mirror	6.1 cm	12 cm

observing run O3, which deviate from linear growth at high power due to the point absorber effect. These data, shown in the inset graph of Fig. 2, are fit to yield a $12.6 \mu\text{m}$ radius absorber and 66 ppm round-trip loss of the cold cavity. The thermal absorptivity is taken as unity to break its degeneracy with the radius of the point absorber [Eq. (12)]. The data sit in the predicted region of the pessimistic case. These results are also consistent with measurements of the total absorbed power of the point absorber [28].

Scatter magnitude.—Knowing the absorber radii, beam position, and cavity parameters, we can calculate the scattered fields through FFT simulation and compare the theoretical modeling with measurements. Inside the arm cavity, there are four silicon photodiodes (PDs) mounted on each of the baffles installed in front of the test mass optics to block and monitor scattered light. As the power in the interferometer increases, the absorbers cause thermoelastic aberration of the HR surface of the test mass, which in turn results in an increased scattering. PD1 and PD4 facing the cavity sample the Airy patterns of scattered light, as shown in Figs. 3(a) and 3(b).

There were roughly a dozen point absorbers scattered around the surface of the end mirror, including one dominant absorber with the largest size near the center of the mirror. After the observing run O3, we moved the beam spot at 23 locations on the end mirror to change the intensity incident on the absorbers while fixing the beam spot on the input mirror. Simulations of each of these 23 alignments reveal that this large and centrally located absorber dominates the optical scatter (Fig. 2). The FFT results are shown in Figs. 3(c) and 3(d) for each of the 23 spot locations. We moved the beam to the same location repeatedly at indices 12, 17, 18, and 23. It is seen that the measurements at these indices are equal, indicating that our measurements are reproducible over a week.

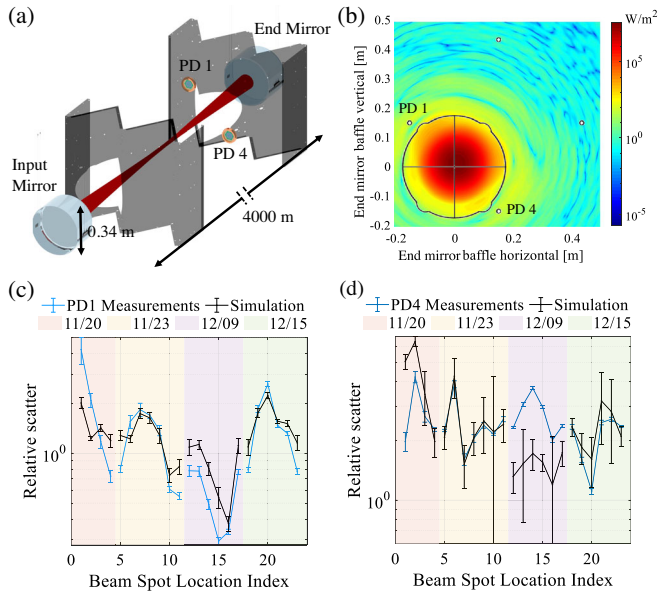


FIG. 3. (a) Schematics of the Y arm cavity of LIGO Livingston Observatory with photodiodes (PD1 and PD4) marked. (b) Intensity distribution of the field incident on the end mirror baffle with a through hole at origin. (c),(d) Experimental measurement (with $5\times$ error bar) of normalized scatter power landing on PD1 and PD4 versus FFT simulation with point absorber formulation incorporated. The error bar of simulation is due to the 3-mm uncertainty of beam position. The data are taken at 23 beam spot locations on the end mirror at four different days. The relative scatter of clean optics without any absorber is roughly an order of magnitude lower than the plotted simulation curve (not shown).

The simulation is capable of predicting the magnitude and variation of the low-angle scatter, even though the field amplitude shows a great amount of structure along the radial distance from the beam center. The consistency between data and simulation lends further credibility to our modeling and improves our understanding of the point absorber effect. Without the scattering due to point absorbers, the simulated relative scatter magnitude is roughly a factor of 10 lower, and the simulated variations show little coherence with the PD measurements.

Conclusion.—In summary, we carried out an analytical approach to the point absorber problem in a high-power resonant cavity. We propose an analytical solution to the thermoelastic deformation of the optics with arbitrary point absorber heating function and boundary conditions. Both temperature and displacement profiles are derived and incorporated in the state-of-the-art FFT-based optical simulation. With a more advanced and accurate understanding of the point absorber effect, we make a statistical prediction of arm power in current and future gravitational-wave detectors for different mean radii of point absorbers. Our analysis of resonant field power in the cavity suggests that point absorbers of mean $5\ \mu\text{m}$ radii will not prevent future gravitational-wave detectors from achieving their design sensitivity. Active research is being carried out to mitigate

both the size and number of point absorbers on future optics. Finally, our formulation shows a strong coherence with data when compared with *in situ* measurements of scattered light, thus confirming our model.

Future analyses on the distortion of phase and mode shape of the fields from point absorbers are needed to estimate the degradation on the Michelson contrast, which impacts the signal-to-noise ratio and thus the sensitivity of the gravitational-wave detectors.

The author acknowledges the support of MathWorks Science Fellowship and Sloan Foundation, and thanks The MathWorks, Inc. for its generous computing support. Advanced LIGO was constructed by the California Institute of Technology and Massachusetts Institute of Technology with funding from the NSF and operates under Cooperative Agreement No. PHY-1764464. Advanced LIGO was built under Grant No. PHY-0823459.

*wenxuanj@mit.edu

- [1] A. F. Brooks *et al.*, Point absorbers in Advanced LIGO, *Appl. Opt.* **60**, 4047 (2021).
- [2] C. J. Hood, H. J. Kimble, and J. Ye, Characterization of high-finesse mirrors: Loss, phase shifts, and mode structure in an optical cavity, *Phys. Rev. A* **64**, 033804 (2001).
- [3] H. Liu, B. D. Elwood, M. Evans, and J. Thaler, Searching for axion dark matter with birefringent cavities, *Phys. Rev. D* **100**, 023548 (2019).
- [4] J. Majer, J. Chow, J. Gambetta, J. Koch, B. Johnson, J. Schreier, L. Frunzio, D. Schuster, A. Houck, A. Wallraff, A. Blais, M. Devoret, S. Girvin, and R. Schoelkopf, Coupling superconducting qubits via a cavity bus, *Nature (London)* **449**, 443 (2007).
- [5] R. X. Adhikari, Gravitational radiation detection with laser interferometry, *Rev. Mod. Phys.* **86**, 121 (2014).
- [6] F. Acernese *et al.*, Advanced VIRGO: A second-generation interferometric gravitational wave detector, *Classical Quantum Gravity* **32**, 024001 (2015).
- [7] K. Somiya, Detector configuration of KAGRA—the Japanese cryogenic gravitational-wave detector, *Classical Quantum Gravity* **29**, 124007 (2012).
- [8] A. Buikema *et al.*, Sensitivity and performance of the Advanced LIGO detectors in the third observing run, *Phys. Rev. D* **102**, 062003 (2020).
- [9] LIGO Scientific Collaboration, Advanced LIGO, *Classical Quantum Gravity* **32**, 074001 (2015).
- [10] M. Tse *et al.*, Quantum-Enhanced Advanced LIGO Detectors in the Era of Gravitational-Wave Astronomy, *Phys. Rev. Lett.* **123**, 231107 (2019).
- [11] C. Zhao, J. Degallaix, L. Ju, Y. Fan, D. G. Blair, B. J. J. Slagmolen, M. B. Gray, C. M. Mow Lowry, D. E. McClelland, D. J. Hosken, D. Mudge, A. Brooks, J. Munch, P. J. Veitch, M. A. Barton, and G. Billingsley, Compensation of Strong Thermal Lensing in High-Optical-Power Cavities, *Phys. Rev. Lett.* **96**, 231101 (2006).
- [12] C. Blair *et al.* (LSC Instrument Authors), First Demonstration of Electrostatic Damping of Parametric

- Instability at Advanced LIGO, *Phys. Rev. Lett.* **118**, 151102 (2017).
- [13] M. Evans *et al.*, Observation of parametric instability in Advanced LIGO, *Phys. Rev. Lett.* **114**, 161102 (2015).
- [14] J. A. Sidles and D. Sigg, Optical torques in suspended Fabry Perot interferometers, *Phys. Lett. A* **354**, 167 (2006).
- [15] L. Barsotti, M. Evans, and P. Fritschel, Alignment sensing and control in Advanced LIGO, *Classical Quantum Gravity* **27**, 084026 (2010).
- [16] W. Winkler, K. Danzmann, A. Rüdiger, and R. Schilling, Heating by optical absorption and the performance of interferometric gravitational-wave detectors, *Phys. Rev. A* **44**, 7022 (1991).
- [17] E. Hall, The effect of a point absorber in an arm cavity, LIGO Document, Report No. LIGO-T1900038, 2019.
- [18] P. Hello and J.-Y. Vinet, Analytical models of thermal aberrations in massive mirrors heated by high power laser beams, *J. Phys.* **51**, 1267 (1990).
- [19] P. P. Lu, A. L. Bullington, P. Beyersdorf, S. Traeger, J. Mansell, R. Beausoleil, E. K. Gustafson, R. L. Byer, and M. M. Fejer, Wavefront distortion of the reflected and diffracted beams produced by the thermoelastic deformation of a diffraction grating heated by a gaussian laser beam, *J. Opt. Soc. Am. A* **24**, 659 (2007).
- [20] K. F. Riley, M. P. Hobson, and S. J. Bence, *Mathematical Methods for Physics and Engineering: A Comprehensive Guide*, 3rd ed. (Cambridge University Press, Cambridge, England, 2006), Chap. 13.3.
- [21] W. R. Mann and F. Wolf, Heat transfer between solids and gasses under nonlinear boundary conditions, *Q. Appl. Math.* **9**, 163 (1951).
- [22] W. R. Mann and J. H. Roberts, On a certain nonlinear integral equation of the Volterra type, *Pac. J. Math.* **1**, 431 (1951).
- [23] P. Hello and J.-Y. Vinet, Analytical models of transient thermoelastic deformations of mirrors heated by high power cw laser beams, *J. Phys.* **51**, 2243 (1990).
- [24] See Supplemental Material at <http://link.aps.org/supplemental/10.1103/PhysRevLett.127.241102> for calculation of thermoelastic displacement of the mirror surface from the temperature solution.
- [25] M. Evans *et al.*, Cosmic explorer: Science, observatories, community, Cosmic Explorer Technical Report No. CE-P2100003, 2021.
- [26] E. D. Hall *et al.*, Gravitational-wave physics with cosmic explorer: Limits to low-frequency sensitivity, *Phys. Rev. D* **103**, 122004 (2021).
- [27] H. Yamamoto, SIS (Stationary Interferometer Simulation) Manual, LIGO Document, Report No. LIGO-T2000311-v2, 2020.
- [28] A. Brooks *et al.*, <https://alog.ligo-la.caltech.edu/aLOG/index.php?callRep=52400> (2020).